



**Bluetooth Wireless
Communication Kit
BlueSoleil**

Quick Installation Guide

Host Requirements

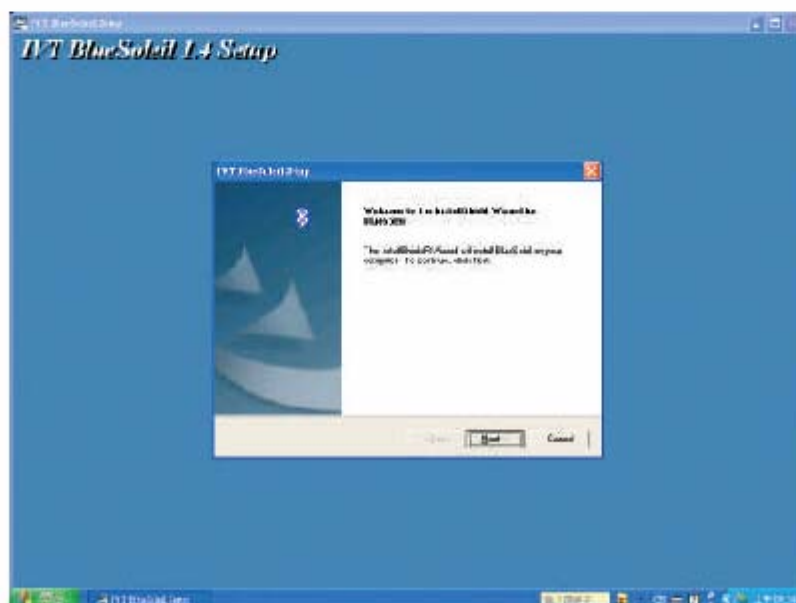
- IBM compatible PC with Pentium, Celeron™ processor or equivalent CPU or higher.
- RAM 64M or above
- Screen: 800*600 or above
- Display: adapter True Color 16 bits or above.
- Microsoft® Windows® 98SE/ME/2000/XP

Contents for Each Package

- Installation software CD for Windows 98SE/ME/2000/XP.
- Bluetooth device, usually a Bluetooth USB dongle.
- User Manual and this Installation Manual

Installation Steps

- Step1: Uninstall pervious version of BlueSoleil, IVT BSS or MiniBluelet. If a previous version of BlueSoleil, IVT BSS or MiniBluelet has been installed, it is recommended to uninstall it first and restart the computer before installation.
- Step 2: Insert the installation software CD into the CD-ROM of your machine.
- Step 3: Launch the Setup.exe program in the installation CD-ROM. In normal cases, you can follow the instructions to finish the installation.



1

Figure 1: Set up IVT Bluesoleil

- Step 4: Restart the Computer. After the BlueSoleil software package is installed, you will need to restart the computer. This is to make sure that the installed Bluetooth Device takes effect.
- Step 5: When the computer has been restarted, start the BlueSoleil application by clicking Start/Programs/IVT BlueSoleil/BlueSoleil. (Figure 2)



Figure 2: Start Blue Soleil

Note

1. For Windows 98SE and Windows ME, the Dial-up Adapter and Windows's component direct cable connection needs to be installed to run the Dial-up Networking profile and LAN access profile.
2. You need configure Bluetooth Network Adapter IP to run PAN profile.
3. More details on how to use IVT BlueSoleil, please refer to Online Help, User manual and any other support document.
4. Headset and AV profile not supported on Win98 SE and ME.

Notice On Windows 98SE/ME

Expected Outcome:

1. Installed Files & Directories (by default):
 - <Windows program files>\IVT Corporation\BlueSoleil
BlueSoleil execution and support files.
 - <Current user>\My Documents\BlueSoleil
Support directory. This is the directory for Object Push and Synchronization. Received cards and other objects will be put here.
2. Installed Devices:
 - 6 Bluelet virtual COM ports
 - 3 Bluelet virtual Modem
 - BT Network Adapter
 - HID device

Notice On Windows 2000/XP

Expected Outcome:

1. Installed Files & Directories (by default):
 - <Windows program files>\IVT Corporation\BlueSoleil
BlueSoleil execution and support files.
 - <Current user>\My Documents\BlueSoleil
Support directory. This is the directory for Object Push and Synchronization. Received cards and other objects will be put here.

2. Installed Devices:

- 6 Bluelet virtual COM ports
- 2 Vcomm Mnager
- 3 Bluelet virtual Modem
- BT Network Adapter
- 6 HID device

This is a preliminary data, and information provided is subject to change without notice. Actual product design may differ from the illustration shown.

FCC Notices

This device complies with part 15 of the FCC rules. Operation is subject to the following two conditions:

1. This device may not cause harmful interference, and
2. This device must accept any interference received, including interference that may cause undersired operation.

FCC RF Exposure requirements:

This device and its antenna(s) must not be co-located or operation in conjunction with any other antenna or transmitter

Note: The manufacturer is not responsible for any radio or TV interference caused by unauthorized modifications to this equipment. Such modifications could void the user's authority to operate the equipment.

"Max. SAR Measured(1g):1.44 W/kg"