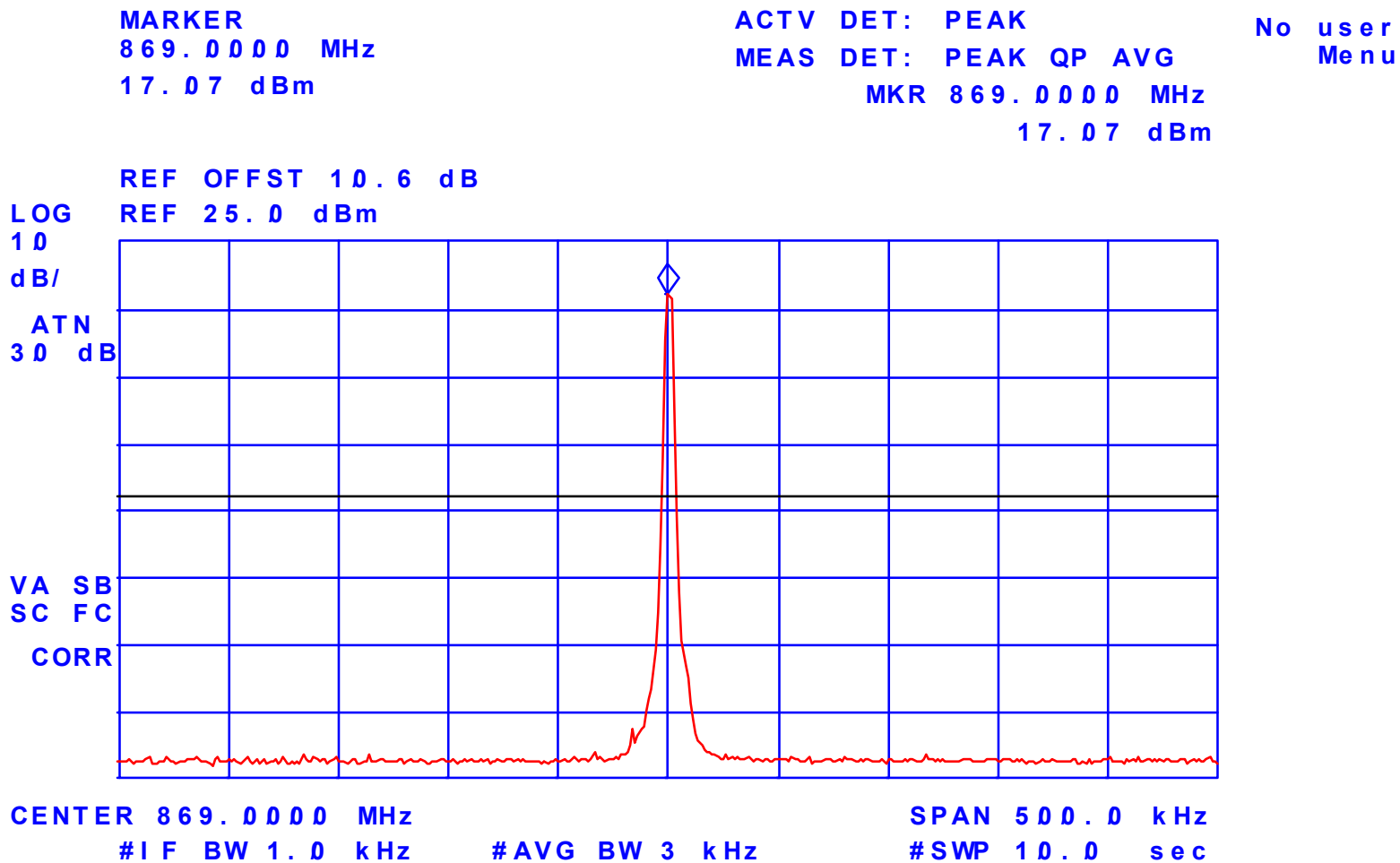


Annex 1 - Intermodulation
Kaval RF Fiber Interface Module, Model US800C

Photo # 1
FCC ID: H6M-US800C

Configuration: Intermodulation with 1 RF Input signal in 869 - 894 MHz
RF Input: -8.99 dBm, Fc: 869 MHz

hp



Annex 1 - Intermodulation
Kaval RF Fiber Interface Module, Model US800C

Photo # 2
FCC ID: H6M-US800C

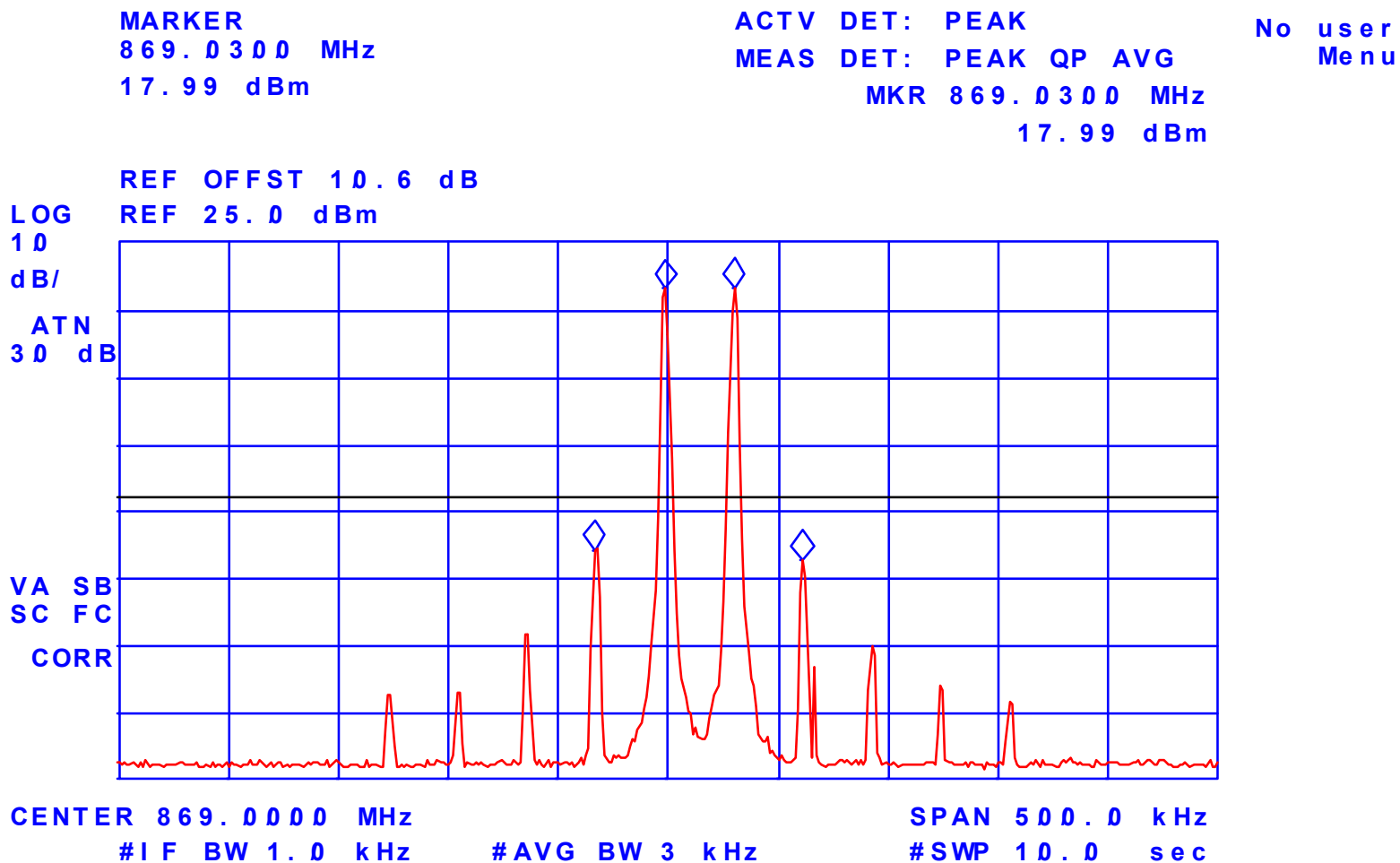
Configuration: Intermodulation with 2 RF Input signal in 869 - 894 MHz

RF Input: (1) -8.88 dBm, (2) -8.74 dBm

Fc: 869 MHz & Fc + 30 kHz

(1) 868.97 MHz, -20.93 dBm, (2) 869 MHz, 17.95 dBm, (3) 869.03 MHz, 17.99 dBm, (4) 869.06 MHz, -22.36 dBm

hp



Annex 1 - Intermodulation
Kaval RF Fiber Interface Module, Model US800C

Photo # 3
FCC ID: H6M-US800C

Configuration: Intermodulation with 3 RF Input signal in 869 - 894 MHz

RF Input: (1) -9.91 dBm, (2) -9.65 dBm, (3) -9.52 dBm

Fc: 869 MHz, Fc + 30 kHz, & Fc + 60 kHz

(1) 868.97 MHz, -13.13 dBm, (2) 869 MHz, 15.44 dBm, (3) 869.03 MHz, 15.58 dBm, (4) 869.06 MHz, 15.58 dBm

hp

MARKER
869.0288 MHz
15.58 dBm

ACTV DET: PEAK
MEAS DET: PEAK QP AVG
MKR 869.0288 MHz
15.58 dBm

No user
Menu

REF OFFST 10.6 dB

LOG REF 25.0 dBm

10

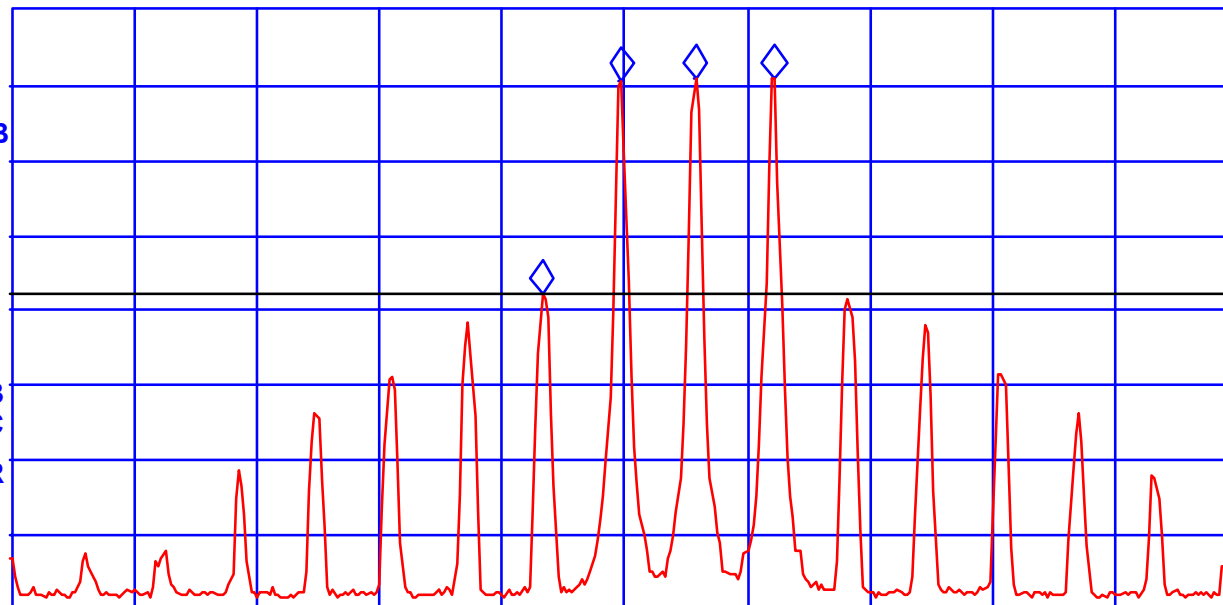
dB/

ATN

30 dB

VA SB
SC FC

CORR



CENTER 869.0000 MHz

#IF BW 1.0 kHz

#AVG BW 3 kHz

SPAN 500.0 kHz

#SWP 10.0 sec

Annex 1 - Intermodulation
Kaval RF Fiber Interface Module, Model US800C

Photo # 4
FCC ID: H6M-US800C

Configuration: Intermodulation with 1 RF Input signal in 869 - 894 MHz
RF Input: -11.64 dBm, Fc: 881.5 MHz

hp

CENTER
881.5000 MHz

ACTV DET: PEAK
MEAS DET: PEAK QP AVG
MKR 881.5000 MHz
17.02 dBm

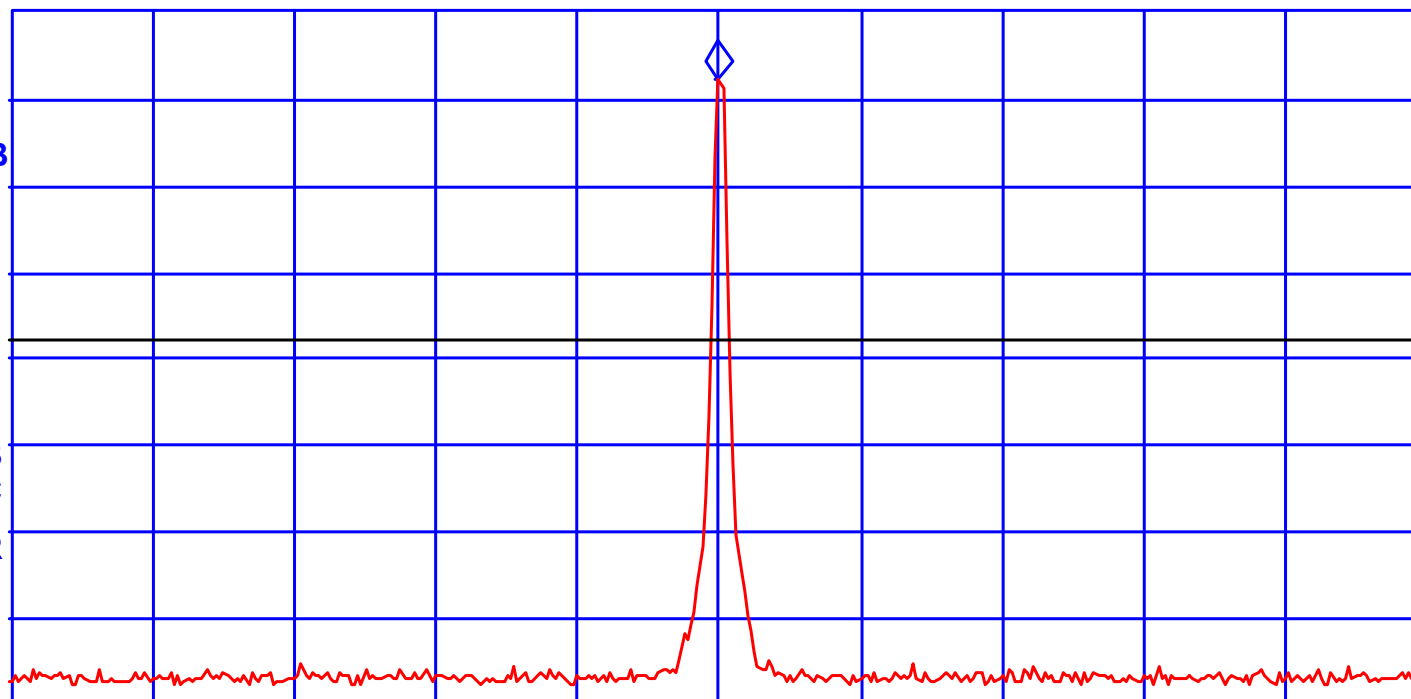
No user
Menu

REF OFFST 10.6 dB

LOG
10
dB/
ATN
30 dB

REF 25.0 dBm

VA SB
SC FC
CORR



CENTER 881.5000 MHz
#IF BW 1.0 kHz

#AVG BW 3 kHz

SPAN 500.0 kHz
#SWP 10.0 sec

Annex 1 - Intermodulation
Kaval RF Fiber Interface Module, Model US800C

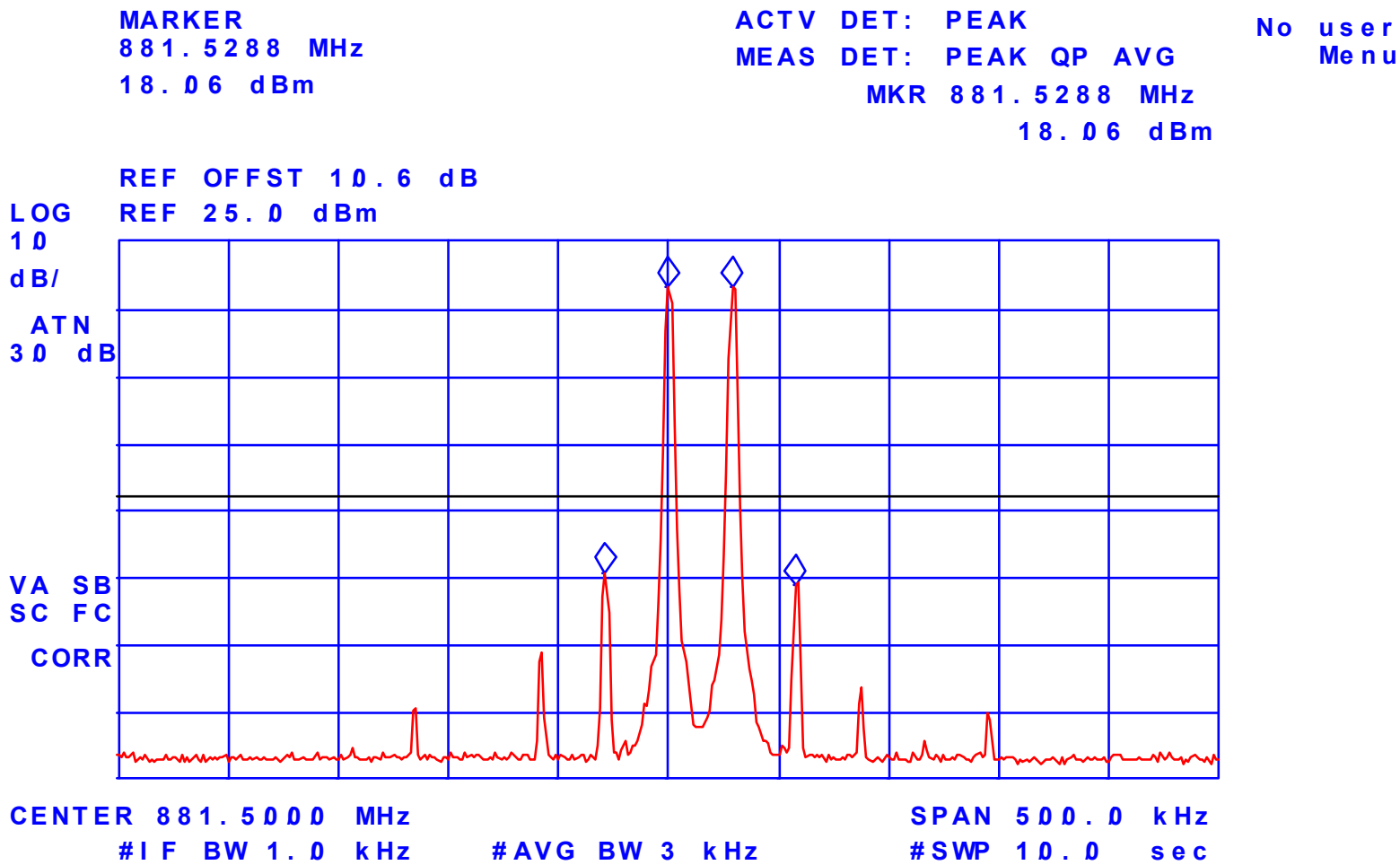
Photo # 5
FCC ID: H6M-US800C

Configuration: Intermodulation with 2 RF Input signal in 869 - 894 MHz

RF Input: (1) -10.87 dBm, (2) -10.64 dBm

Fc: 881.5 MHz & Fc + 30 kHz

(1) 881.47 MHz, -24.39 dBm, (2) 881.5 MHz, 17.99 dBm, (3) 881.53 MHz, 18.06 dBm, (4) 881.56 MHz, -26.26 dBm



Annex 1 - Intermodulation
Kaval RF Fiber Interface Module, Model US800C

Photo # 6
FCC ID: H6M-US800C

Configuration: Intermodulation with 3 RF Input signal in 869 - 894 MHz

RF Input: (1) -11.30 dBm, (2) -11.14 dBm, (3) -11.43 dBm

Fc: 881.5 MHz, Fc - 30 kHz, & Fc + 30 kHz

(1) 881.44 MHz, -13.18 dBm, (2) 881.47 MHz, 16.22 dBm, (3) 881.5 MHz, 16.29 dBm, (4) 881.53 MHz, 16.24 dBm

hp

MARKER
881.4988 MHz
16.29 dBm

ACTV DET: PEAK
MEAS DET: PEAK QP AVG
MKR 881.4988 MHz
16.29 dBm

No user
Menu

REF OFFST 10.6 dB

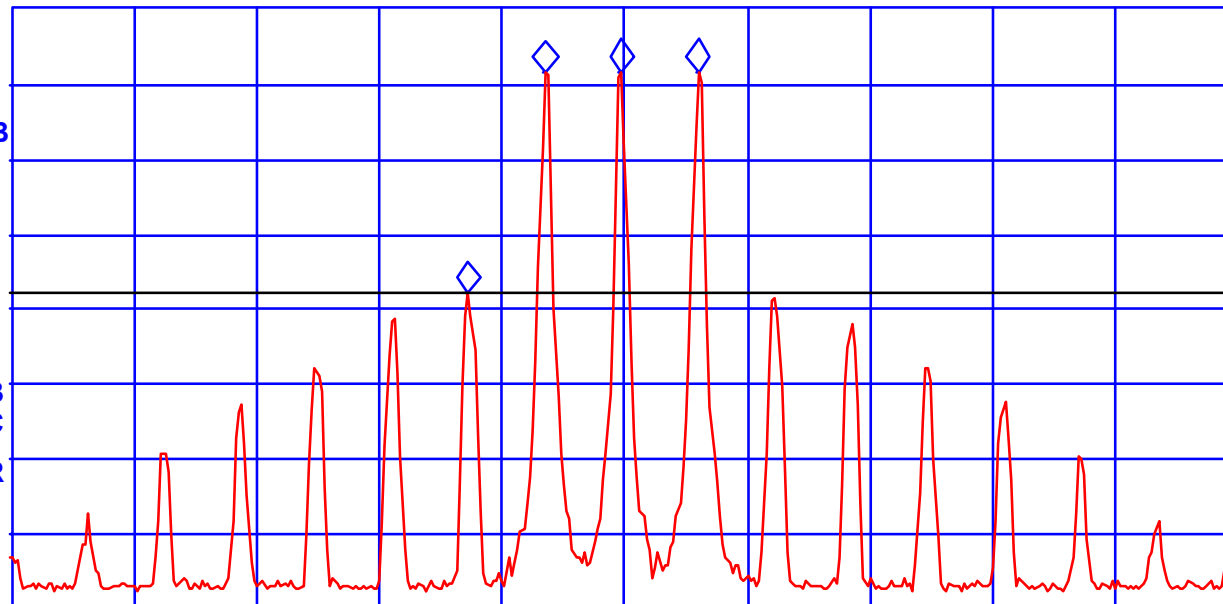
LOG REF 25.0 dBm

10

dB/

ATN
30 dB

VA SB
SC FC
CORR



CENTER 881.5000 MHz

#IF BW 1.0 kHz

#AVG BW 3 kHz

SPAN 500.0 kHz

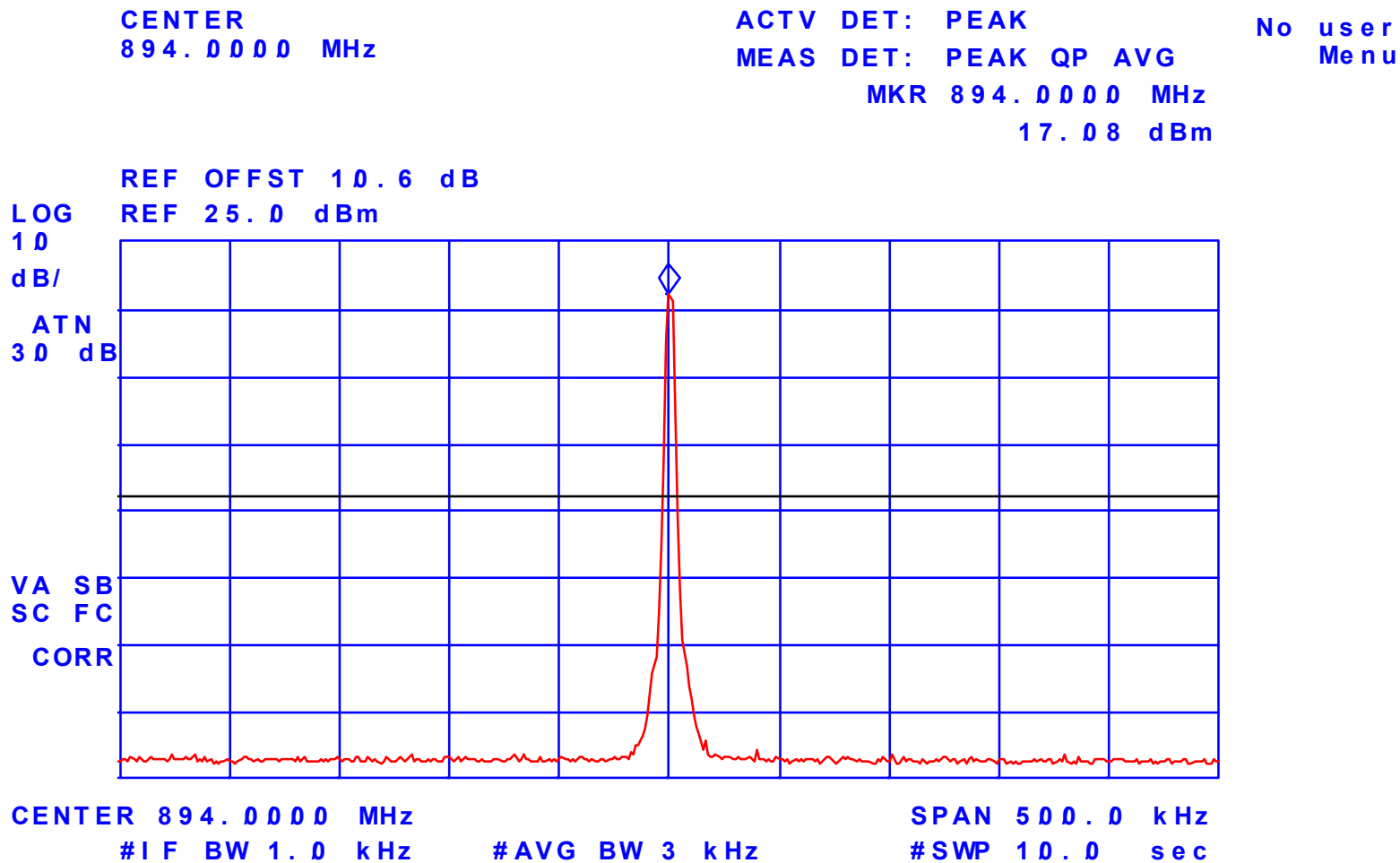
#SWP 10.0 sec

Annex 1 - Intermodulation
Kaval RF Fiber Interface Module, Model US800C

Photo # 7
FCC ID: H6M-US800C

Configuration: Intermodulation with 1 RF Input signal in 869 - 894 MHz
RF Input: -9.53 dBm, Fc: 894 MHz

hp



Annex 1 - Intermodulation
Kaval RF Fiber Interface Module, Model US800C

Photo # 8
FCC ID: H6M-US800C

Configuration: Intermodulation with 2 RF Input signal in 869 - 894 MHz

RF Input: (1) -8.62 dBm, (2) -8.36 dBm

Fc: 894 MHz & Fc - 30 kHz

(1) 893.94 MHz, -28.26 dBm, (2) 893.97 MHz, 17.98 dBm, (3) 894 MHz, 18.02 dBm, (4) 894.03 MHz, -26.45 dBm

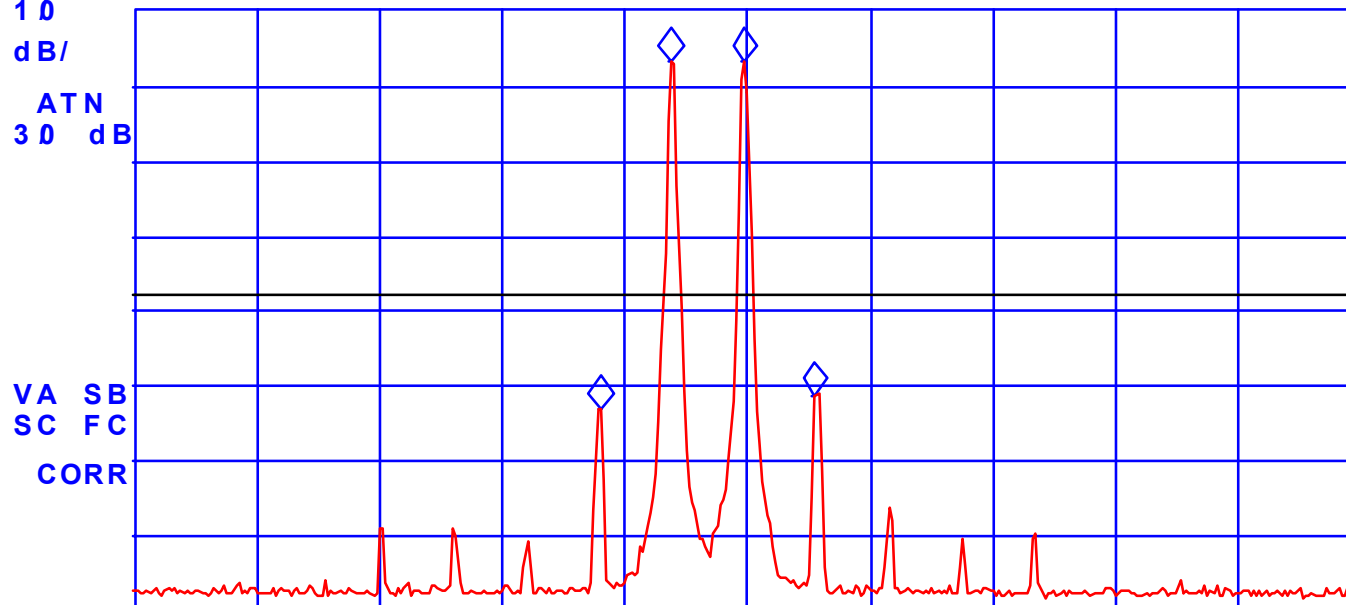
hp

MARKER
893.9988 MHz
18.02 dBm

ACTV DET: PEAK
MEAS DET: PEAK QP AVG
MKR 893.9988 MHz
18.02 dBm

No user
Menu

LOG 10
dB/
ATN 30 dB
REF OFFST 10.6 dB
REF 25.0 dBm



CENTER 894.0000 MHz
#IF BW 1.0 kHz

#AVG BW 3 kHz

SPAN 500.0 kHz
#SWP 10.0 sec

Annex 1 - Intermodulation
Kaval RF Fiber Interface Module, Model US800C

Photo # 9
FCC ID: H6M-US800C

Configuration: Intermodulation with 3 RF Input signal in 869 - 894 MHz

RF Input: (1) -9.62 dBm, (2) -9.35 dBm, (3) -9.74 dBm

Fc: 894 MHz, Fc - 30 kHz, & Fc - 60 kHz

(1) 893.91 MHz, -13.03 dBm, (2) 893.94 MHz, 16.50 dBm, (3) 893.97 MHz, 16.67 dBm, (4) 894 MHz, 16.55 dBm

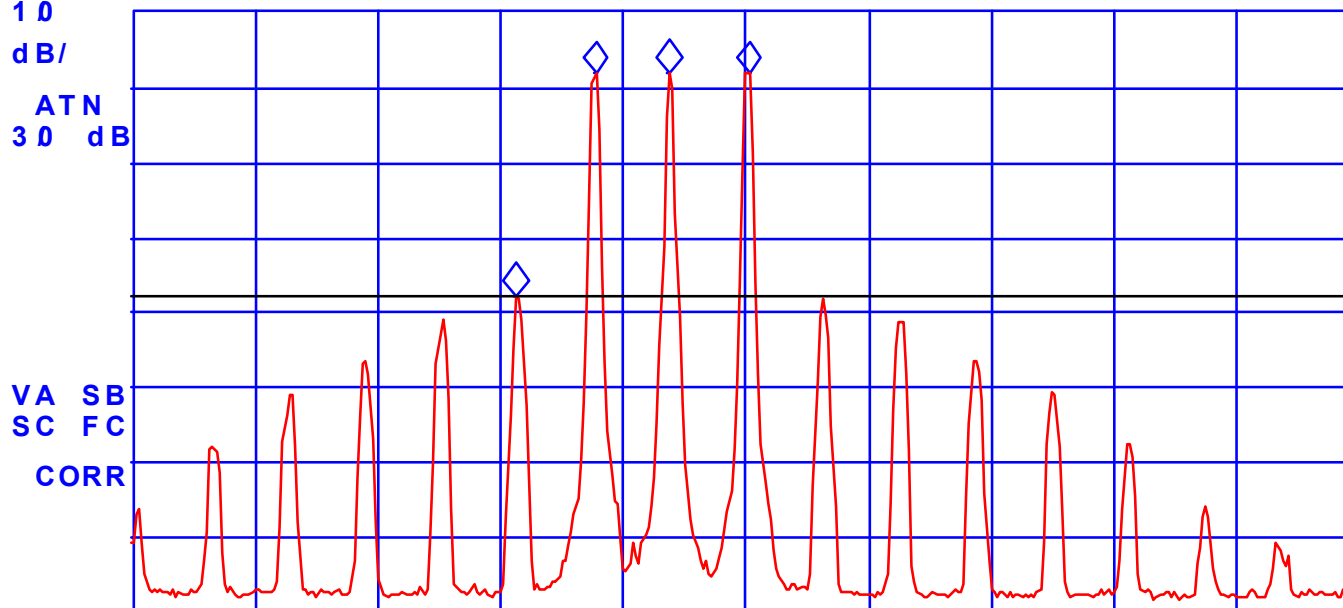
tp

MARKER
894.0013 MHz
16.55 dBm

ACTV DET: PEAK
MEAS DET: PEAK QP AVG
MKR 894.0013 MHz
16.55 dBm

No user
Menu

LOG 10
dB/
ATN 30 dB
REF OFFST 10.6 dB
REF 25.0 dBm



CENTER 894.0000 MHz
#IF BW 1.0 kHz

#AVG BW 3 kHz

SPAN 500.0 kHz
#SWP 10.0 sec