

Annex 1 - Intermodulation
Kaval RF Fiber Interface Module, Model US1900P

Photo # 1
FCC ID: H6M-US1900P

Configuration: Intermodulation with 1 RF Input signal in 1930 - 1990 MHz
RF Input: -7.09 dBm, Fc: 1931 MHz



SPAN
500.0 kHz

ACTV DET: PEAK
MEAS DET: PEAK QP AVG
MKR 1.9310000 GHz
14.97 dBm

No user
Menu

REF OFFST 11.3 dB

LOG

REF 20.0 dBm

10

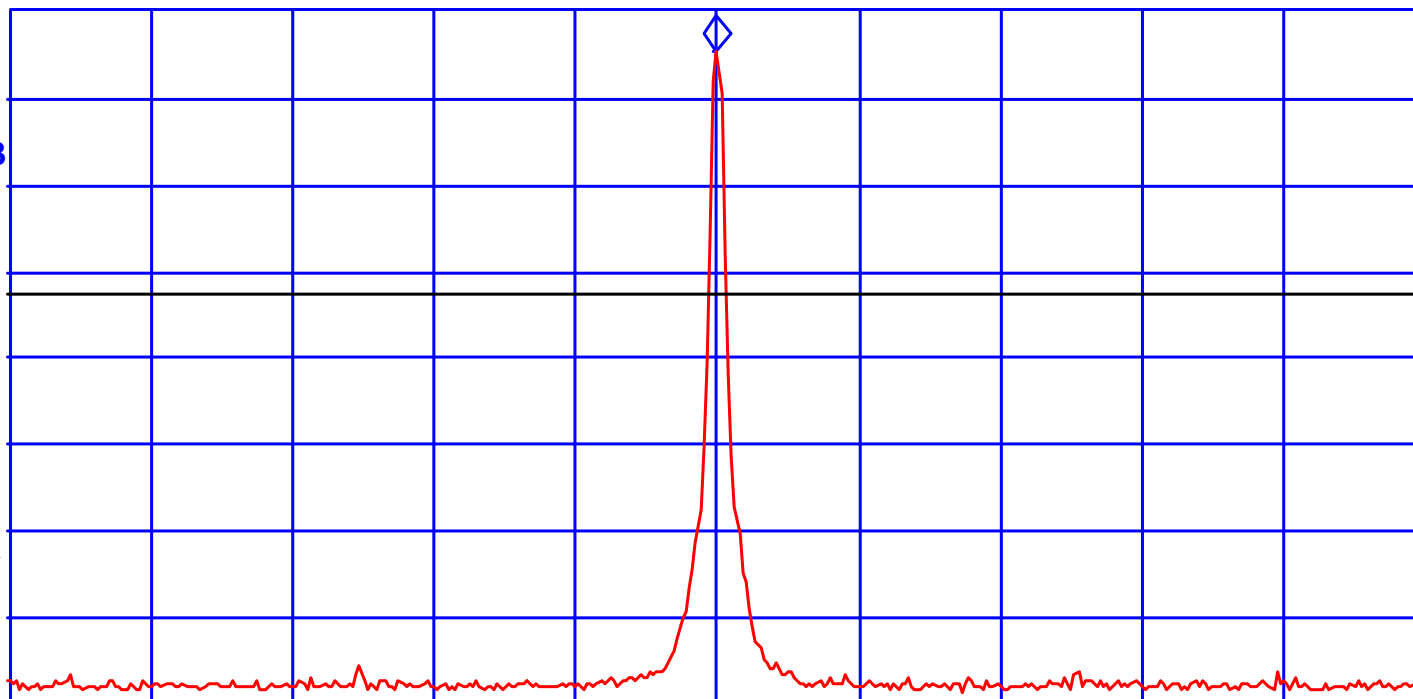
dB/

ATN

20 dB

VA SB
SC FC

CORR



CENTER 1.9310000 GHz

#IF BW 1.0 kHz

#AVG BW 3 kHz

SPAN 500.0 kHz

#SWP 10.0 sec

Annex 1 - Intermodulation
Kaval RF Fiber Interface Module, Model US1900P

Photo # 2
FCC ID: H6M-US1900P

Configuration: Intermodulation with 2 RF Input signal in 1930 - 1990 MHz

RF Input: (1) -6.29 dBm, (2) -6.54 dBm

Fc: 1931 MHz, Fc + 0.2 MHz,

(1) 1930.8 MHz, -14.82 dBm, (2) 1931 MHz, 16.05 dBm, (3) 1931.2 MHz, 16.03 dBm, (4) 1931.4 MHz, -14.39 dBm

hp

MARKER
1.931400 GHz
-14.39 dBm

ACTV DET: PEAK
MEAS DET: PEAK QP AVG
MKR 1.931400 GHz
-14.39 dBm

No user
Menu

REF OFFST 11.3 dB

LOG REF 20.0 dBm

1 0

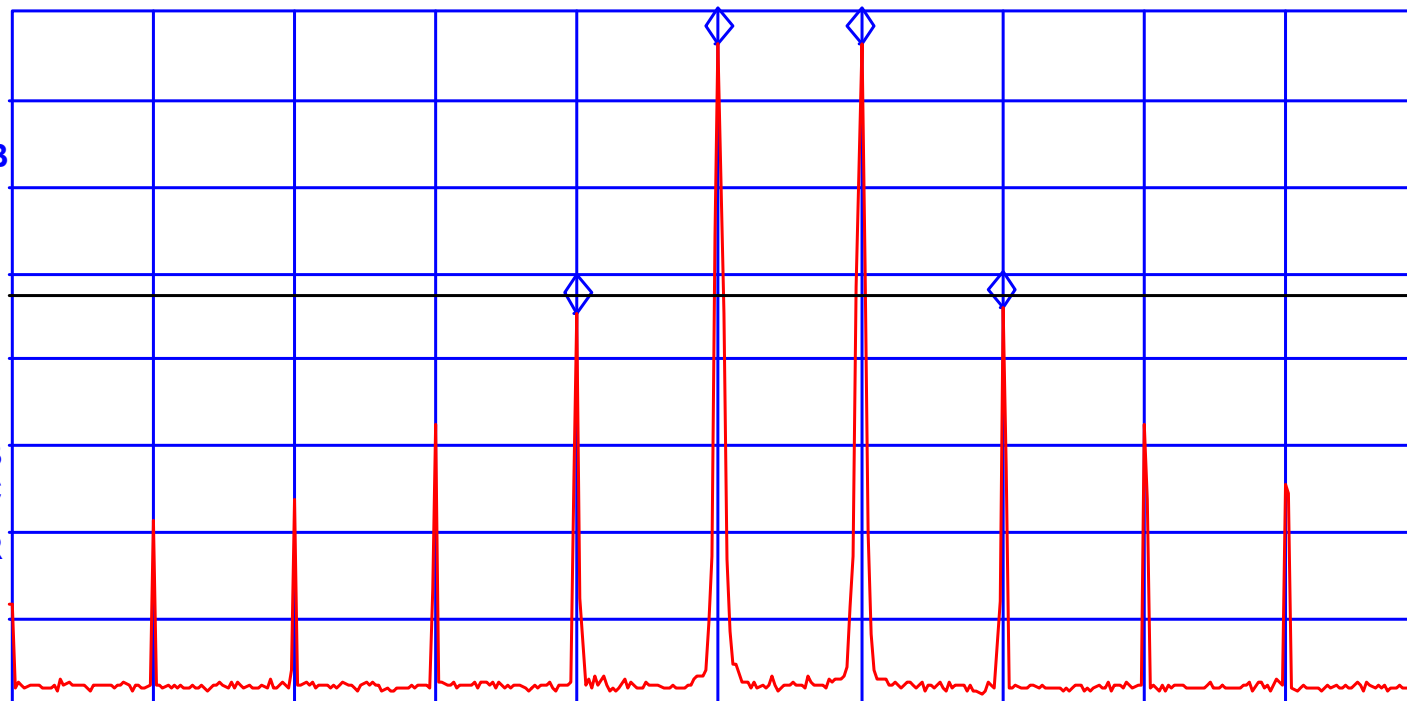
dB/

ATN

2 0 dB

VA SB
SC FC

CORR



CENTER 1.931000 GHz

#IF BW 1.0 kHz

#AVG BW 3 kHz

SPAN 2.000 MHz

#SWP 10.0 sec

Annex 1 - Intermodulation
Kaval RF Fiber Interface Module, Model US1900P

Photo # 3
FCC ID: H6M-US1900P

Configuration: Intermodulation with 3 RF Input signal in 1930 - 1990 MHz

RF Input: (1) -7.97 dBm, (2) -8.11 dBm, (3) -9.41 dBm

Fc: 1931 MHz, Fc + 0.2 MHz, Fc - 0,2 MHz

(1) 1930.59 MHz, -13.05 dBm, (2) 1930.795 MHz, 13.82 dBm, (3) 1931 MHz, 13.66 dBm, (4) 1931.2 MHz, 13.95 dBm

hp

MARKER
1.931200 GHz
13.95 dBm

ACTV DET: PEAK
MEAS DET: PEAK QP AVG
MKR 1.931200 GHz
13.95 dBm

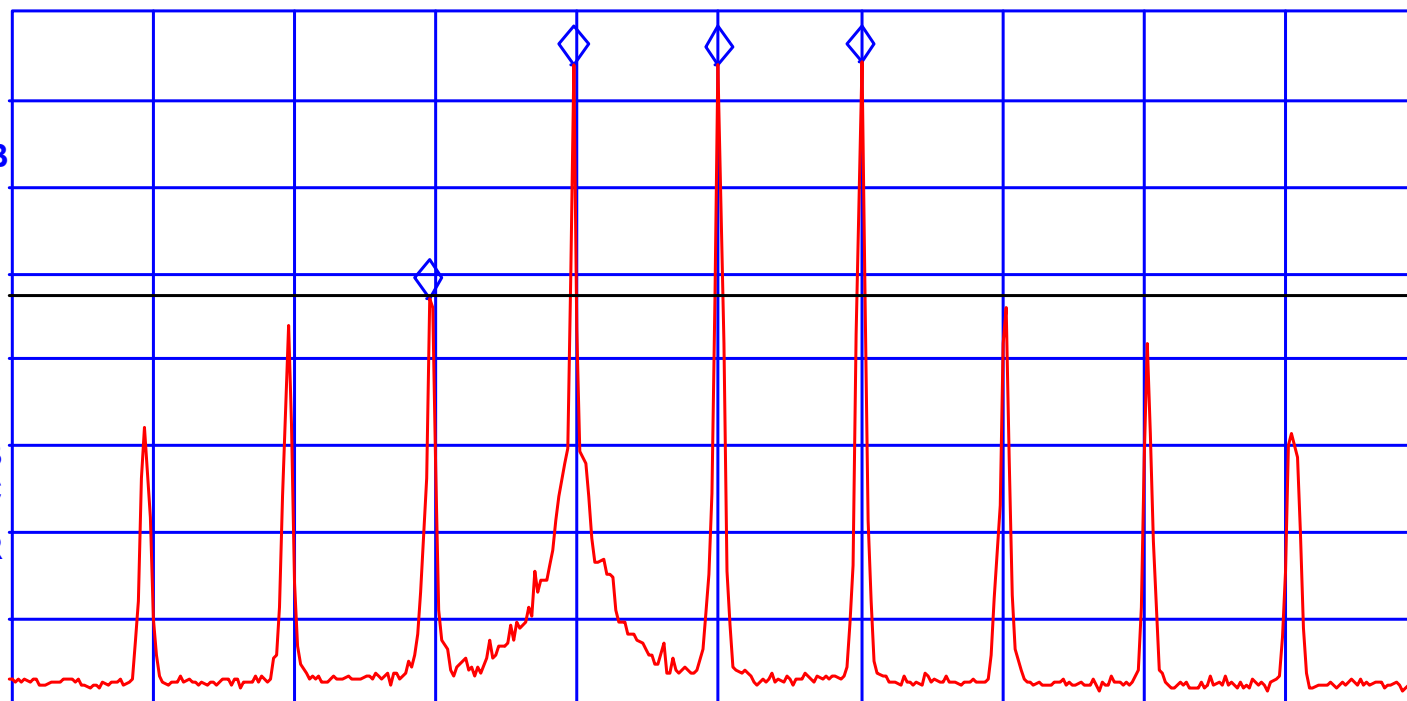
No user
Menu

REF OFFST 11.3 dB

LOG 10
dB/
ATN 20 dB

REF 20.0 dBm

VA SB
SC FC
CORR



CENTER 1.931000 GHz
#IF BW 1.0 kHz

#AVG BW 3 kHz

SPAN 2.000 MHz
#SWP 10.0 sec

Annex 1 - Intermodulation
Kaval RF Fiber Interface Module, Model US1900P

Photo # 4
FCC ID: H6M-US1900P

Configuration: Intermodulation with 1 RF Input signal in 1930 - 1990 MHz
RF Input: -12.82 dBm
Fc: 1960 MHz

hp

CENTER
1.9600000 GHz

ACTV DET: PEAK
MEAS DET: PEAK QP AVG
MKR 1.9600000 GHz
15.01 dBm

No user
Menu

REF OFFST 11.3 dB

LOG

REF 20.0 dBm

10

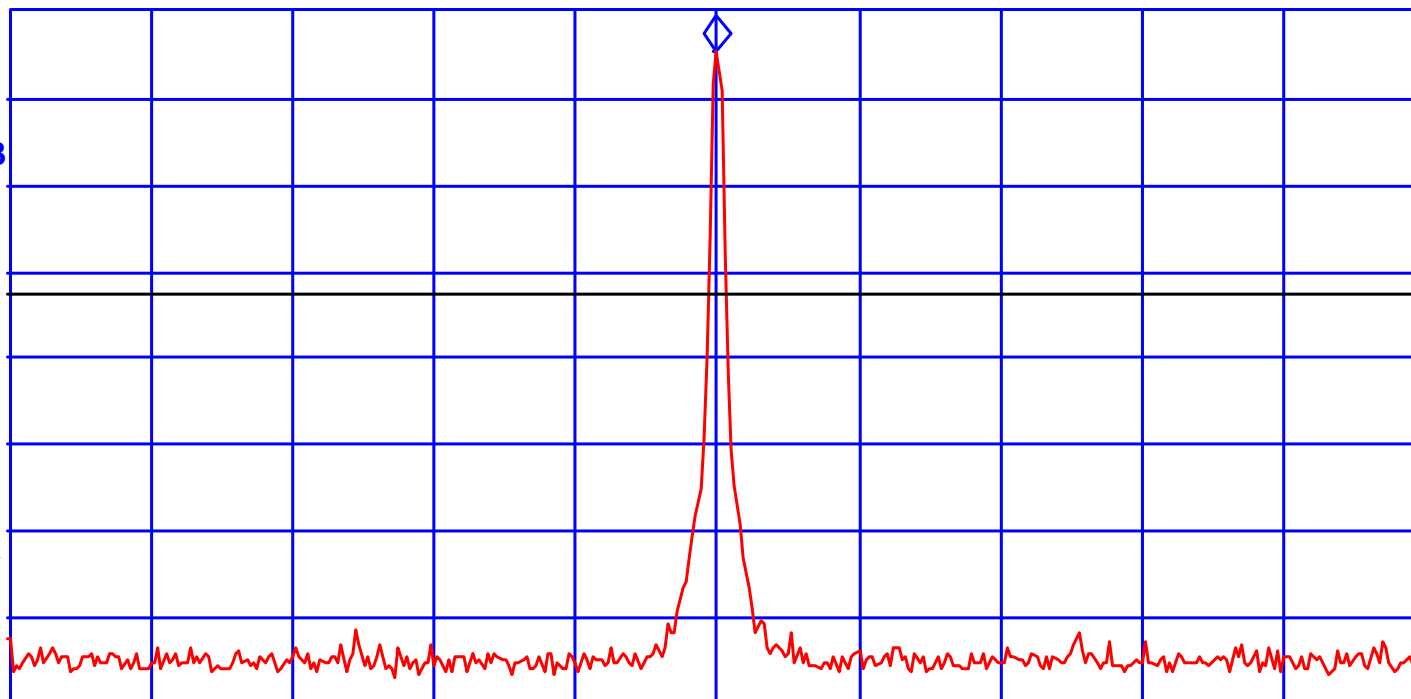
dB/

ATN

20 dB

VA SB
SC FC

CORR



CENTER 1.9600000 GHz

#IF BW 1.0 kHz

#AVG BW 3 kHz

SPAN 500.0 kHz

#SWP 10.0 sec

Annex 1 - Intermodulation
Kaval RF Fiber Interface Module, Model US1900P

Photo # 5
FCC ID: H6M-US1900P

Configuration: Intermodulation with 2 RF Input signal in 1930 - 1990 MHz

RF Input: (1) -12.15 dBm, (2) -12.10 dBm

Fc: 1960 MHz, Fc + 0.2 MHz

(1) 1959.8 MHz, -22.07 dBm, (2) 1960 MHz, 16.05 dBm, (3) 1960.2 MHz, 16.00 dBm, (4) 1960.4 MHz, -20.51 dBm

tp

MARKER
1.960400 GHz
-20.51 dBm

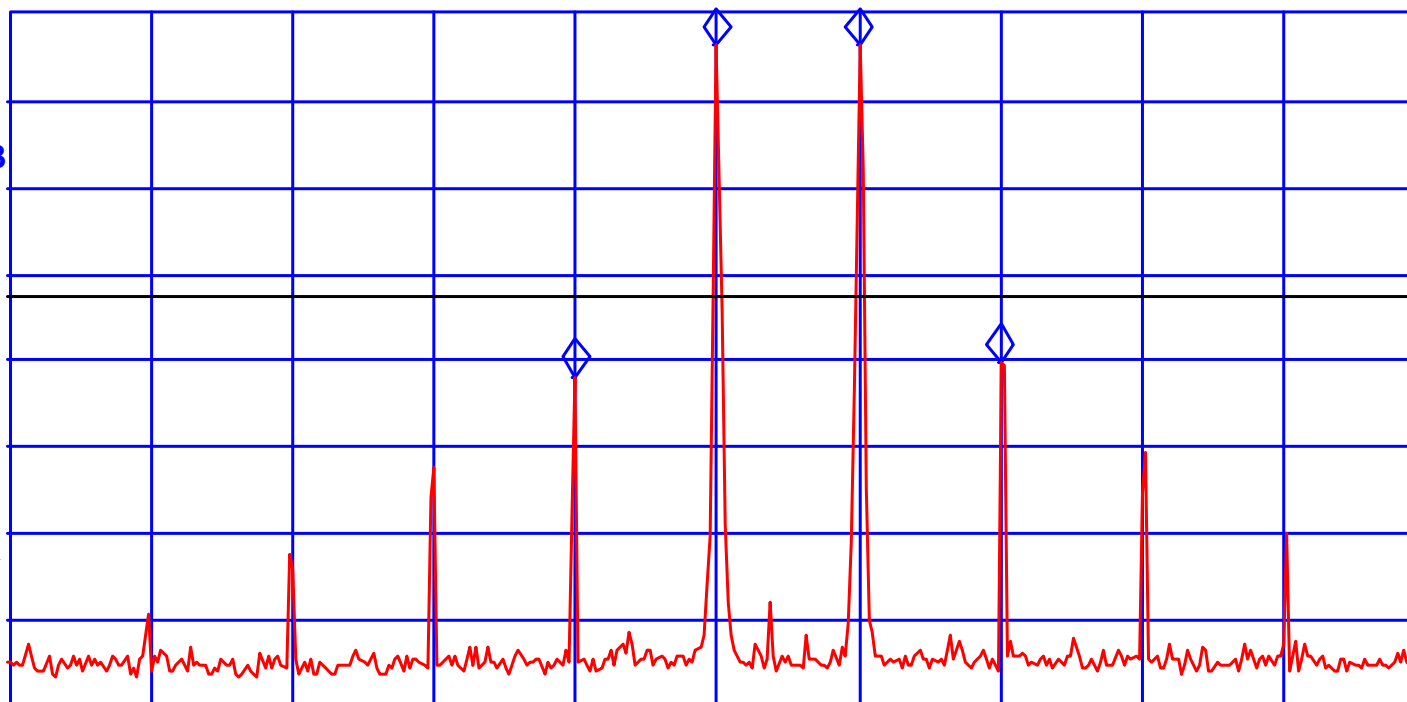
ACTV DET: PEAK
MEAS DET: PEAK QP AVG
MKR 1.960400 GHz
-20.51 dBm

No user
Menu

REF OFFST 11.3 dB
LOG REF 20.0 dBm

10
dB/
ATN
20 dB

VA SB
SC FC
CORR



CENTER 1.960000 GHz
#IF BW 1.0 kHz

#AVG BW 3 kHz

SPAN 2.000 MHz
#SWP 10.0 sec

Annex 1 - Intermodulation
Kaval RF Fiber Interface Module, Model US1900P

Photo # 6
FCC ID: H6M-US1900P

Configuration: Intermodulation with 3 RF Input signal in 1930 - 1990 MHz

RF Input: (1) -16.05 dBm, (2) -16.05 dBm, (3) -13.99 dBm

Fc: 1960 MHz, Fc + 0.2 MHz, Fc - 0.2 MHz

(1) 1959.585 MHz, -13.64 dBm, (2) 1959.795 MHz, 15.03 dBm, (3) 1960 MHz, 15.08 dBm, (4) 1960.2 MHz, 15.08 dBm

tp

MARKER
1.960200 GHz
15.08 dBm

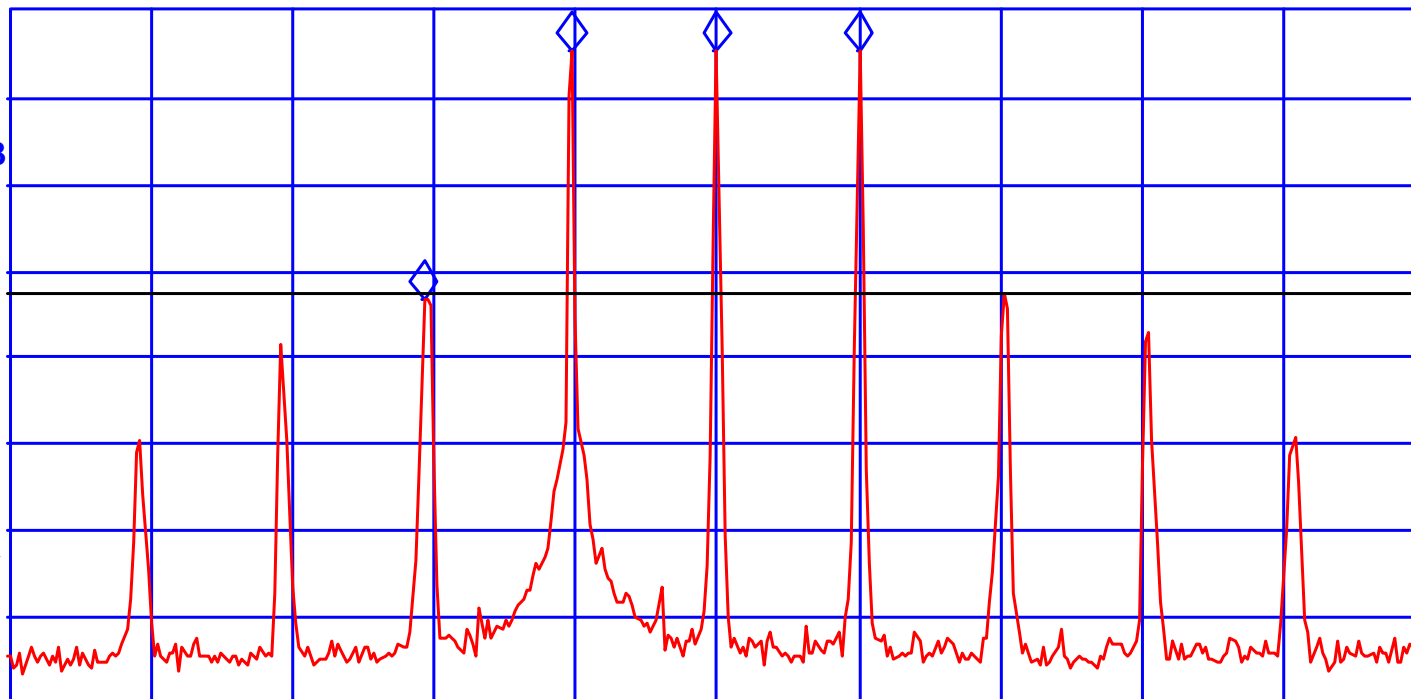
ACTV DET: PEAK
MEAS DET: PEAK QP AVG
MKR 1.960200 GHz
15.08 dBm

No user
Menu

REF OFFST 11.3 dB
LOG REF 20.0 dBm

10
dB/
ATN
20 dB

VA SB
SC FC
CORR



CENTER 1.960000 GHz
#IF BW 1.0 kHz

#AVG BW 3 kHz

SPAN 2.000 MHz
#SWP 10.0 sec

Annex 1 - Intermodulation
Kaval RF Fiber Interface Module, Model US1900P

Photo # 7
FCC ID: H6M-US1900P

Configuration: Intermodulation with 1 RF Input signal in 1930 - 1990 MHz
RF Input: -10.74 dBm
Fc: 1989 MHz

hp

CENTER
1.9890000 GHz

ACTV DET: PEAK
MEAS DET: PEAK QP AVG
MKR 1.9890000 GHz
15.04 dBm

No user
Menu

REF OFFST 11.3 dB

LOG

REF 20.0 dBm

10

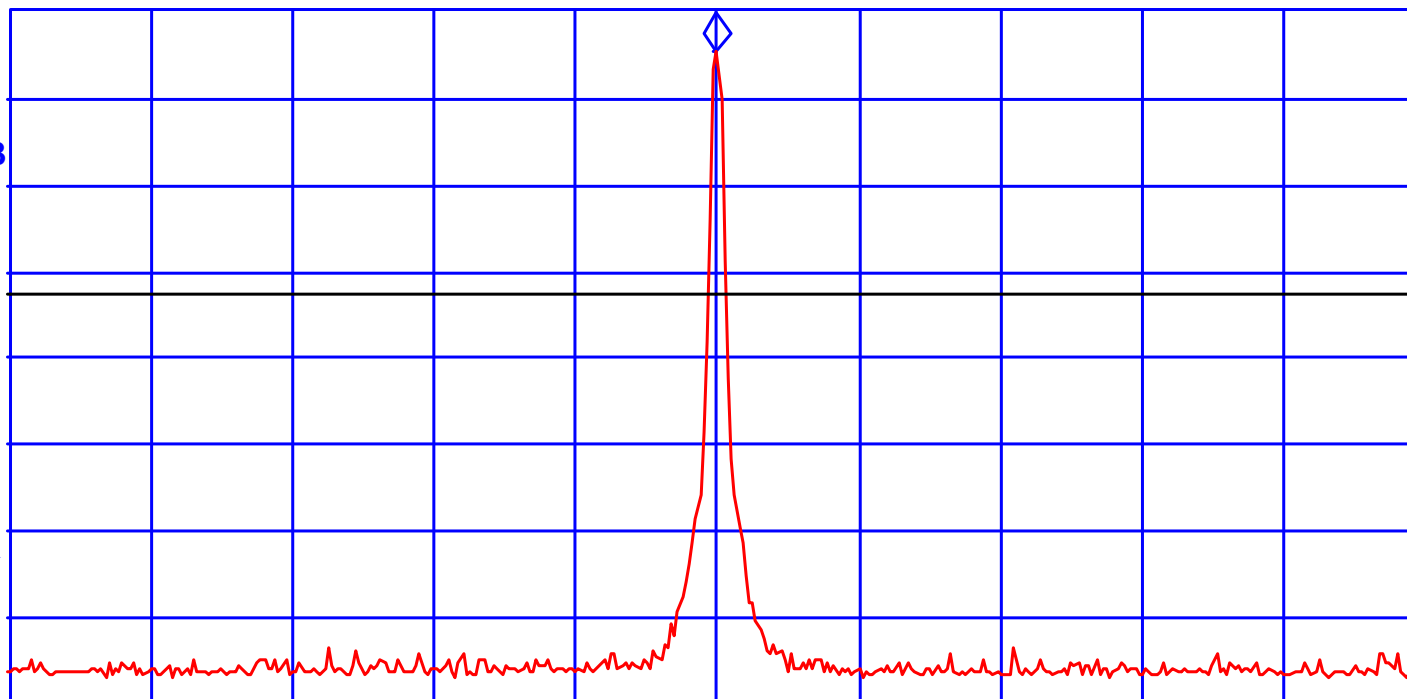
dB/

ATN

20 dB

VA SB
SC FC

CORR



CENTER 1.9890000 GHz

#IF BW 1.0 kHz

#AVG BW 3 kHz

SPAN 500.0 kHz

#SWP 10.0 sec

Annex 1 - Intermodulation
Kaval RF Fiber Interface Module, Model US1900P

Photo # 8
FCC ID: H6M-US1900P

Configuration: Intermodulation with 2 RF Input signal in 1930 - 1990 MHz

RF Input: (1) -9.27 dBm, (2) -8.99 dBm

Fc: 1989 MHz, Fc + 0.2 MHz

(1) 1988.8 MHz, -24.27 dBm, (2) 1989 MHz, 16.00 dBm, (3) 1989.2 MHz, 16.06 dBm, (4) 1989.4 MHz, -24.04 dBm

hp

MARKER
1.989400 GHz
-24.04 dBm

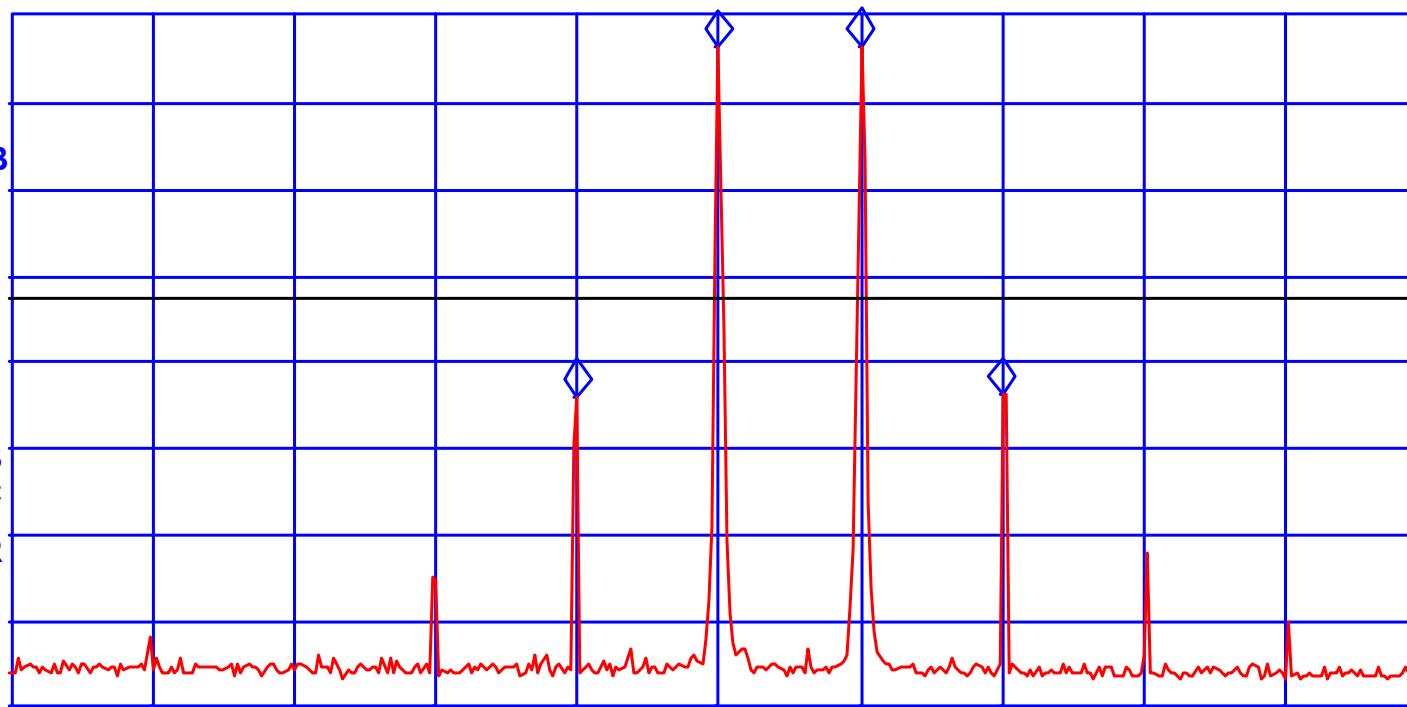
ACTV DET: PEAK
MEAS DET: PEAK QP AVG
MKR 1.989400 GHz
-24.04 dBm

No user
Menu

REF OFFST 11.3 dB
LOG REF 20.0 dBm

LOG
10
dB/
ATN
20 dB

VA SB
SC FC
CORR



CENTER 1.989000 GHz
#IF BW 1.0 kHz

#AVG BW 3 kHz

SPAN 2.000 MHz
#SWP 10.0 sec

Annex 1 - Intermodulation
Kaval RF Fiber Interface Module, Model US1900P

Photo # 9
FCC ID: H6M-US1900P

Configuration: Intermodulation with 3 RF Input signal in 1930 - 1990 MHz

RF Input: (1) -9.36 dBm, (2) -9.22 dBm, (3) -5.71 dBm

Fc: 1989 MHz, Fc + 0.2 MHz, Fc - 0.2 MHz

(1) 1988.59 MHz, -13.39 dBm, (2) 1988.795 MHz, 15.60 dBm, (3) 1989 MHz, 15.78 dBm, (4) 1989.2 MHz, 15.64 dBm

tp

MARKER
1.989000 GHz
15.78 dBm

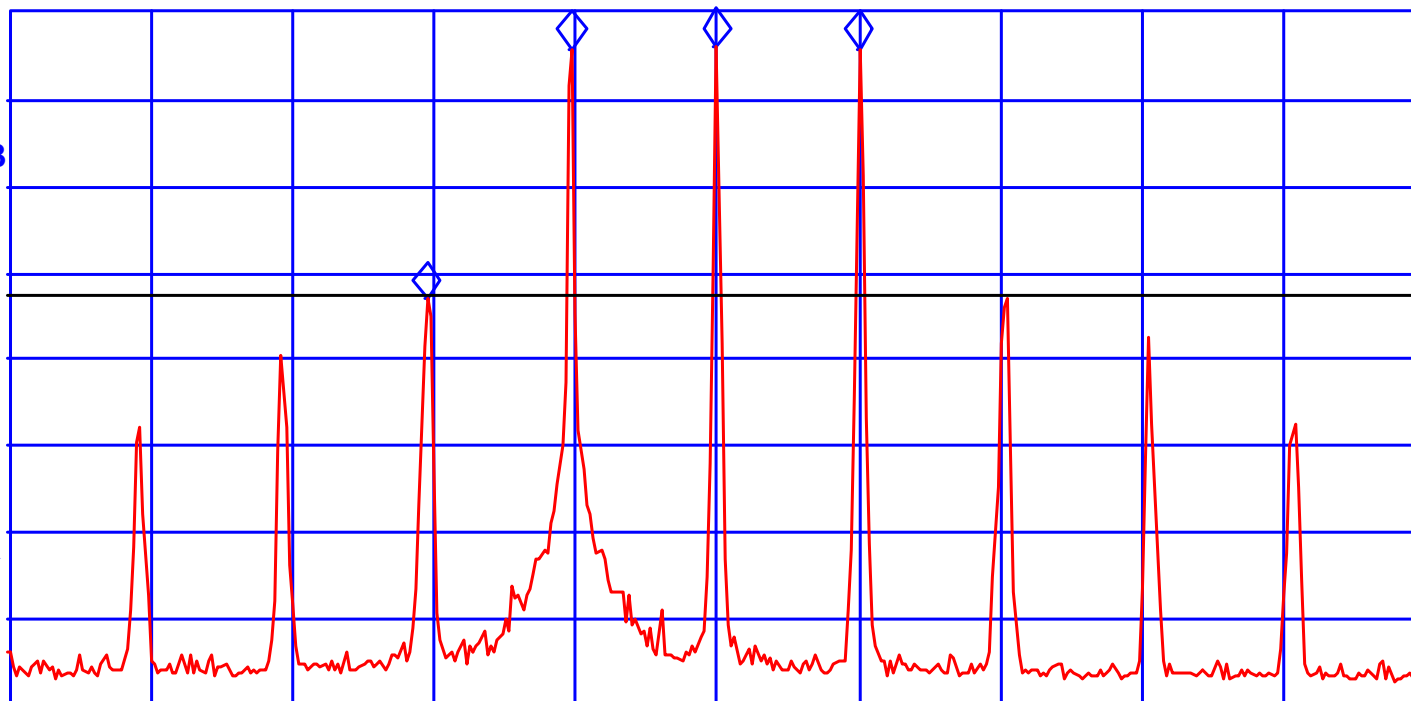
ACTV DET: PEAK
MEAS DET: PEAK QP AVG
MKR 1.989000 GHz
15.78 dBm

No user
Menu

REF OFFST 11.3 dB
LOG REF 20.0 dBm

10
dB/
ATN
20 dB

VA SB
SC FC
CORR



CENTER 1.989000 GHz
#IF BW 1.0 kHz

#AVG BW 3 kHz

SPAN 2.000 MHz
#SWP 10.0 sec