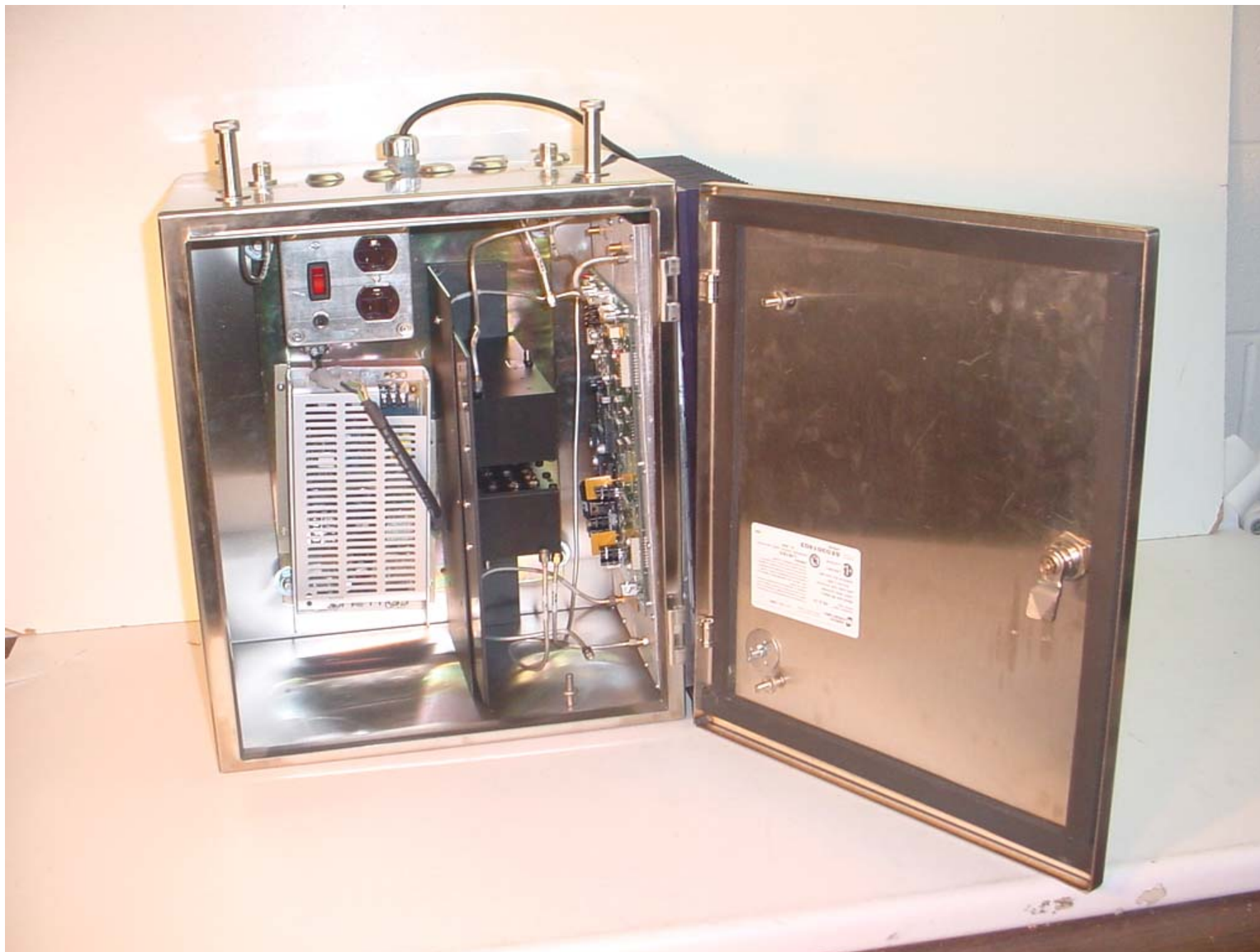


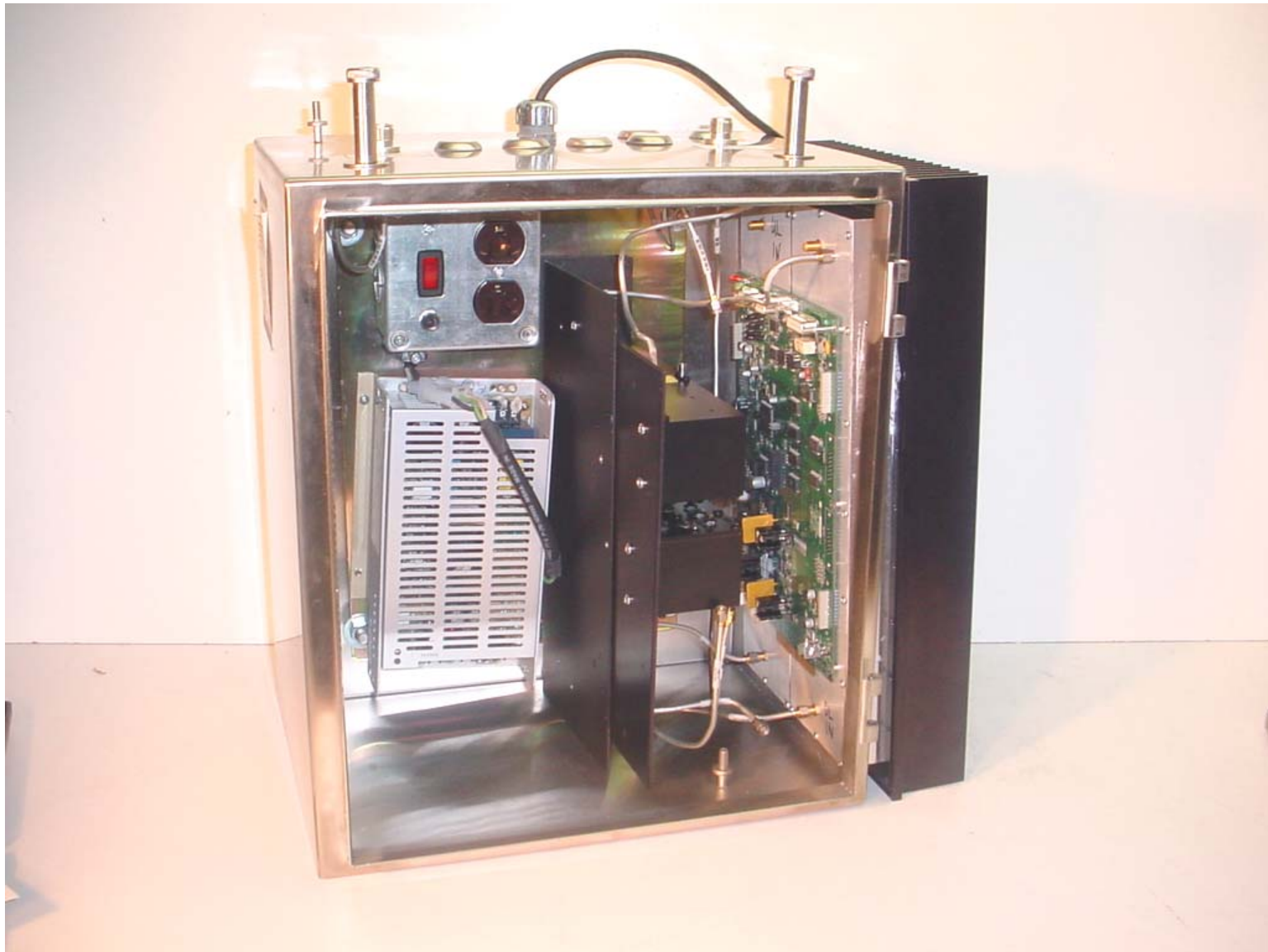
Annex 3 – Internal Photographs of The EUT
In-Hancer Plus Bi-Directional Amplifier, Model SB800

Photo # 1
FCC ID: H6M-SB800
IC: 1541A-SB800



Annex 3 – Internal Photographs of The EUT
In-Hancer Plus Bi-Directional Amplifier, Model SB800

Photo # 2
FCC ID: H6M-SB800
IC: 1541A-SB800



Annex 3 – Internal Photographs of The EUT
In-Hancer Plus Bi-Directional Amplifier, Model SB800

Photo # 3
FCC ID: H6M-SB800
IC: 1541A-SB800



Annex 3 – Internal Photographs of The EUT
In-Hancer Plus Bi-Directional Amplifier, Model SB800

Photo # 4
FCC ID: H6M-SB800
IC: 1541A-SB800



Annex 3 – Internal Photographs of The EUT
In-Hancer Plus Bi-Directional Amplifier, Model SB800

Photo # 5
FCC ID: H6M-SB800
IC: 1541A-SB800



Annex 3 – Internal Photographs of The EUT
In-Hancer Plus Bi-Directional Amplifier, Model SB800

Photo # 6
FCC ID: H6M-SB800
IC: 1541A-SB800



Annex 3 – Internal Photographs of The EUT
In-Hancer Plus Bi-Directional Amplifier, Model SB800

Photo # 7
FCC ID: H6M-SB800
IC: 1541A-SB800



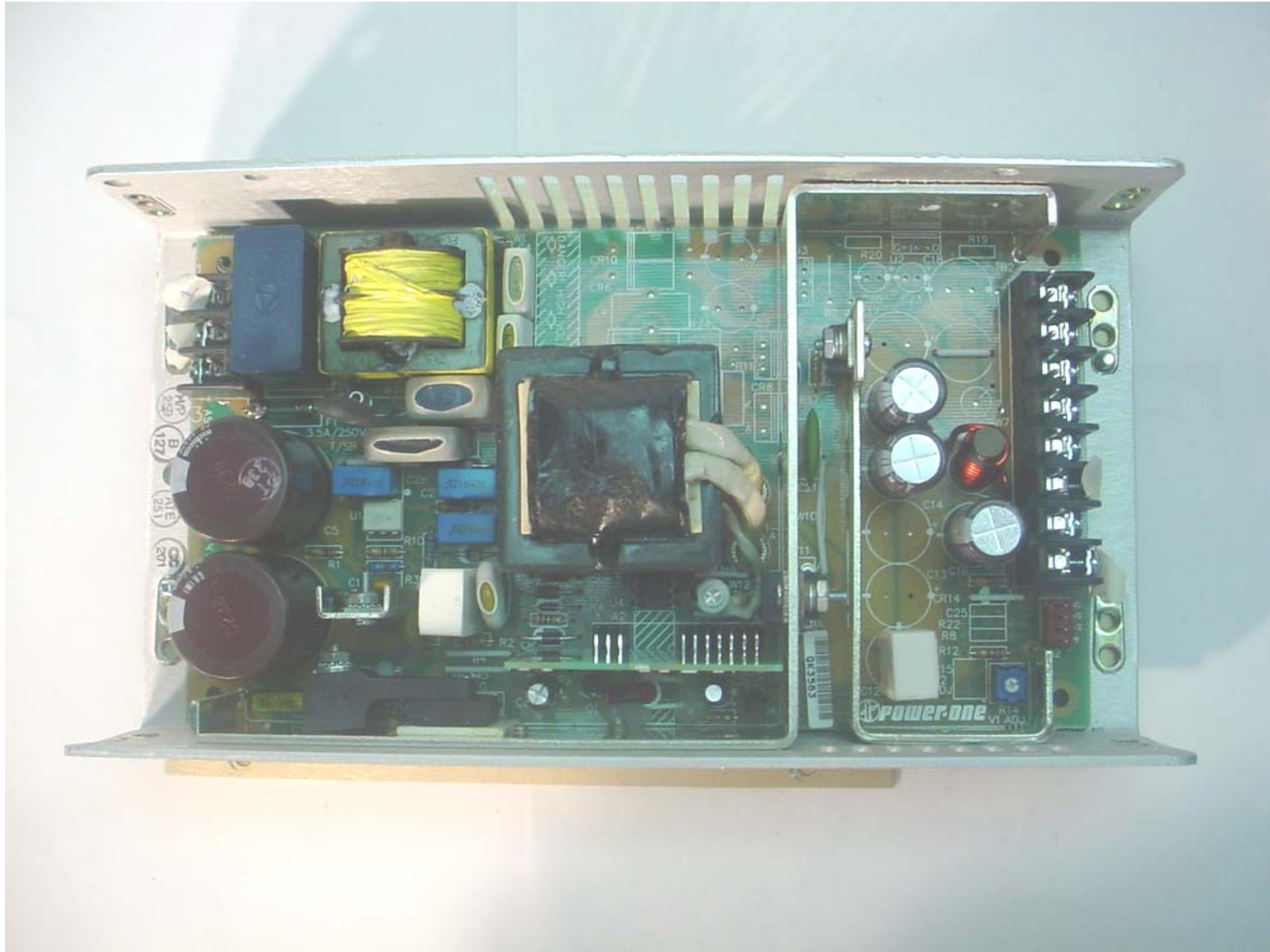
Annex 3 – Internal Photographs of The EUT
In-Hancer Plus Bi-Directional Amplifier, Model SB800

Photo # 8
FCC ID: H6M-SB800
IC: 1541A-SB800



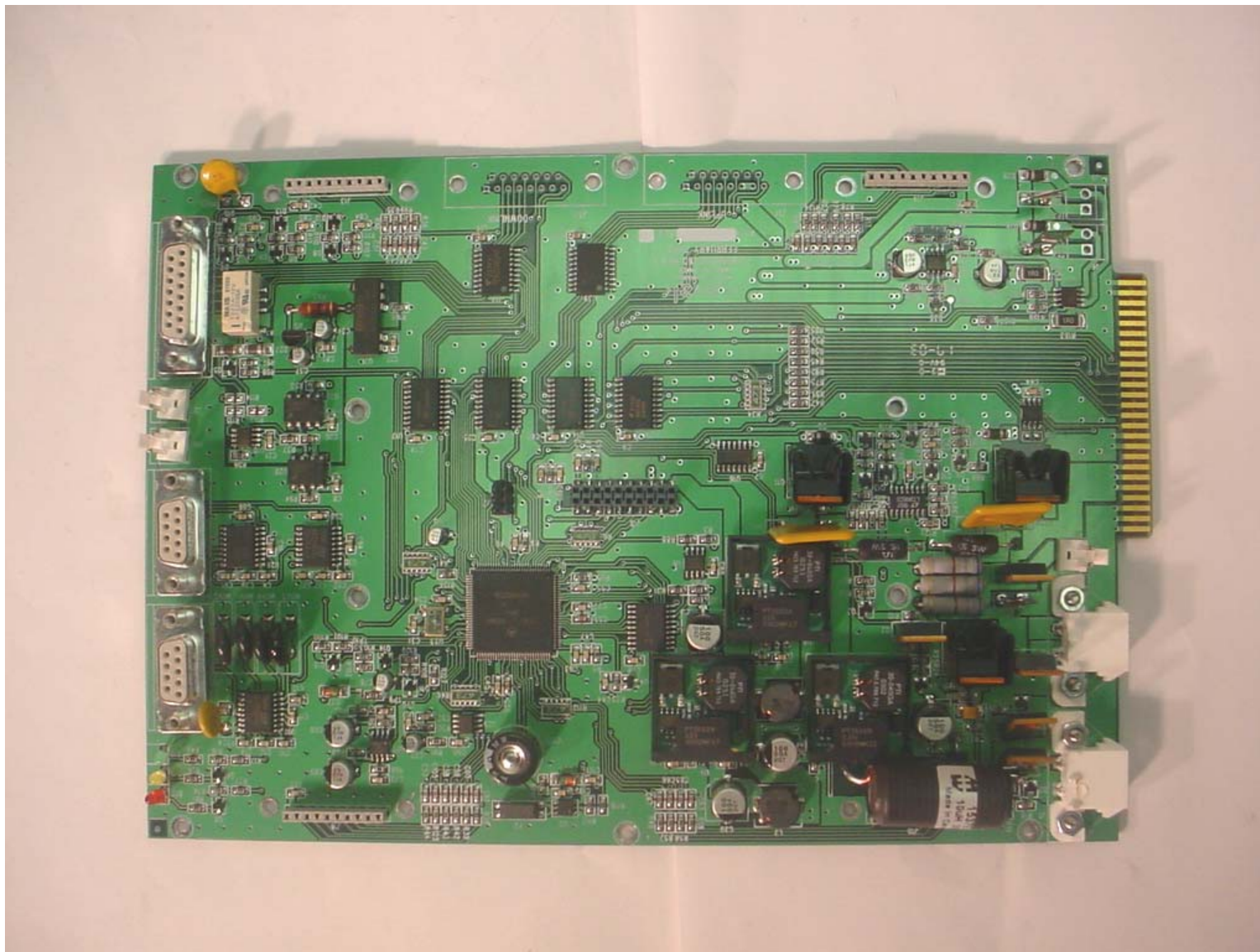
Annex 3 – Internal Photographs of The EUT
In-Hancer Plus Bi-Directional Amplifier, Model SB800

Photo # 9
FCC ID: H6M-SB800
IC: 1541A-SB800



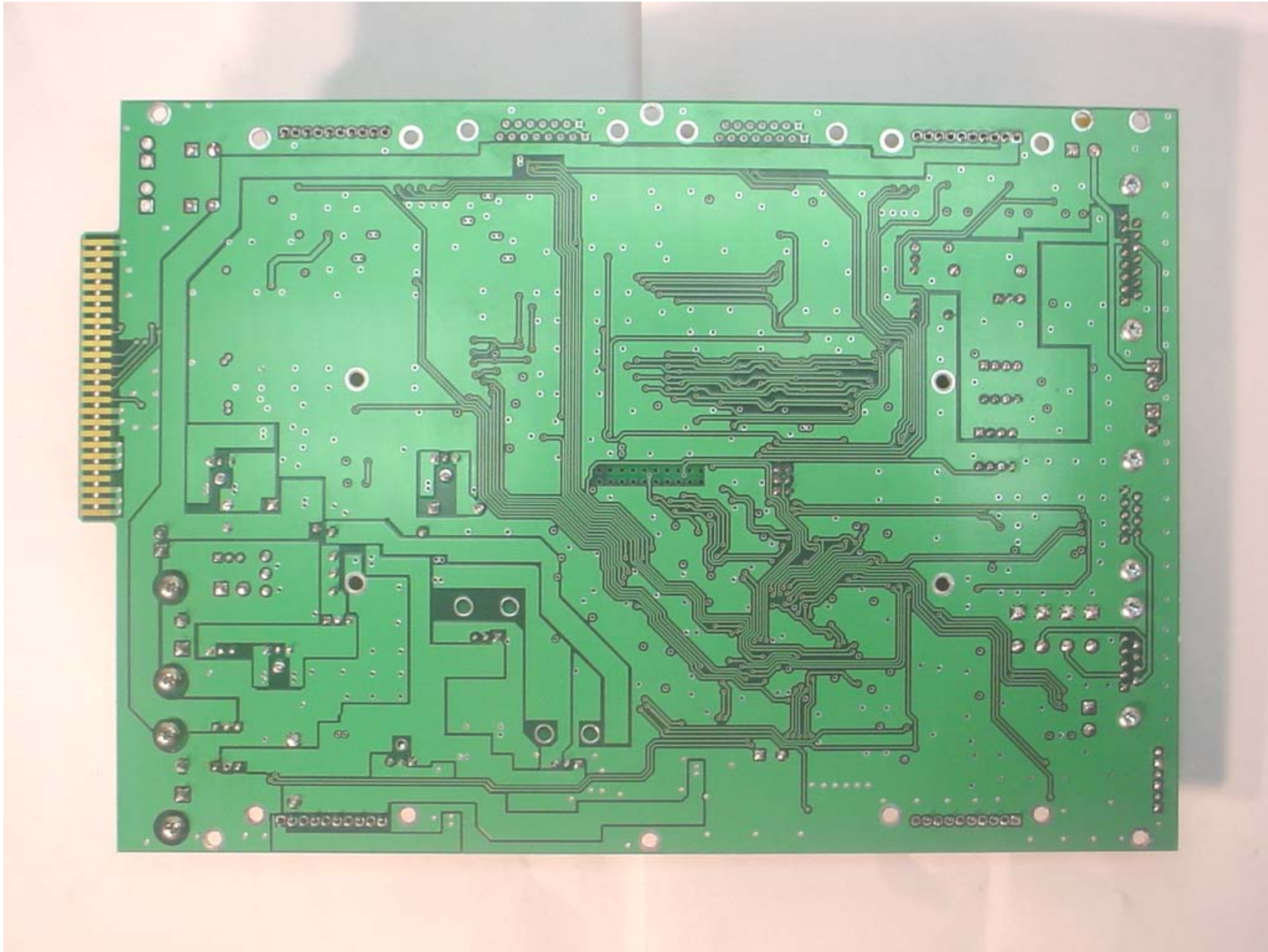
Annex 3 – Internal Photographs of The EUT
In-Hancer Plus Bi-Directional Amplifier, Model SB800

Photo # 10
FCC ID: H6M-SB800
IC: 1541A-SB800



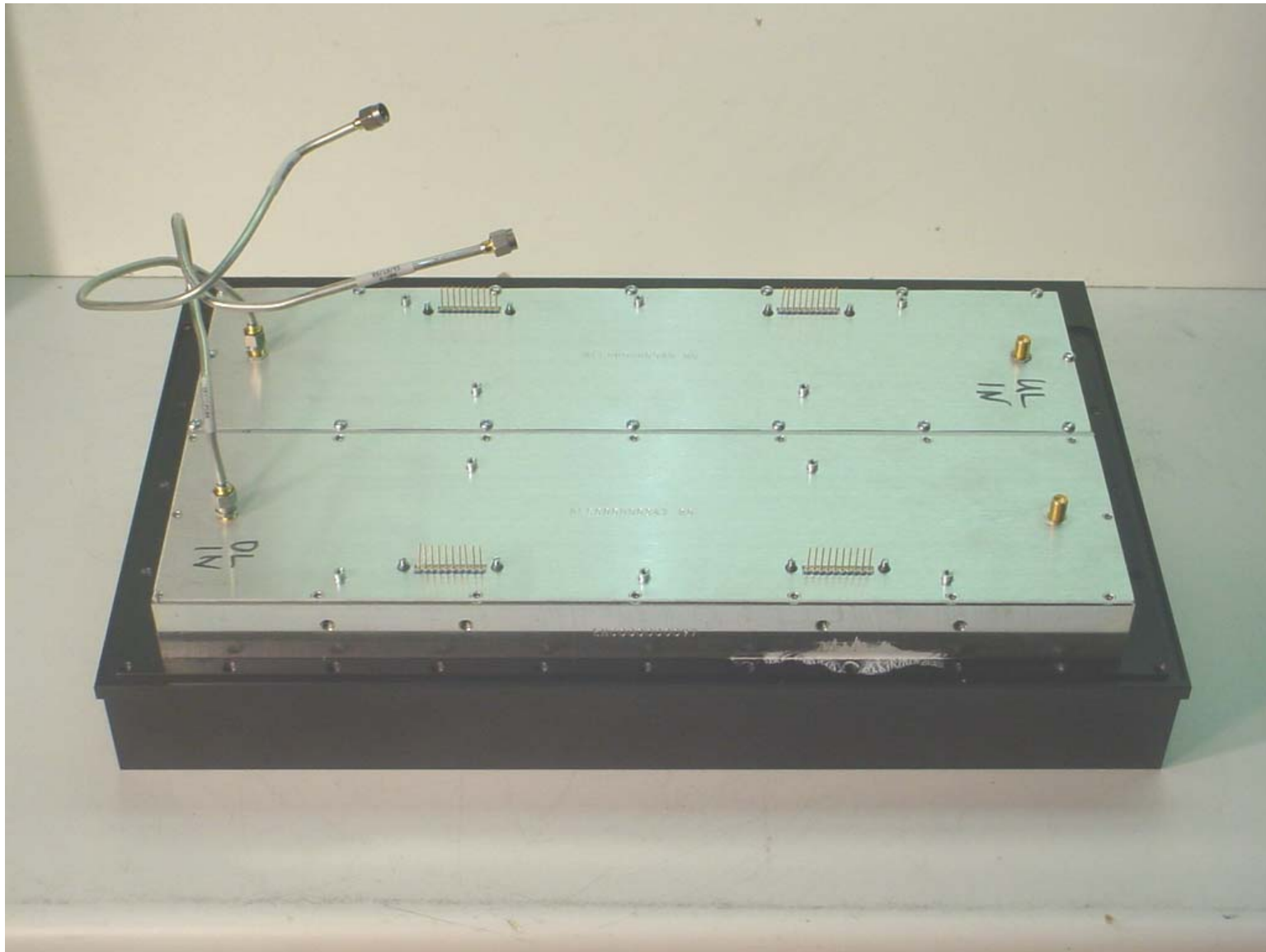
Annex 3 – Internal Photographs of The EUT
In-Hancer Plus Bi-Directional Amplifier, Model SB800

Photo # 11
FCC ID: H6M-SB800
IC: 1541A-SB800



Annex 3 – Internal Photographs of The EUT
In-Hancer Plus Bi-Directional Amplifier, Model SB800

Photo # 12
FCC ID: H6M-SB800
IC: 1541A-SB800



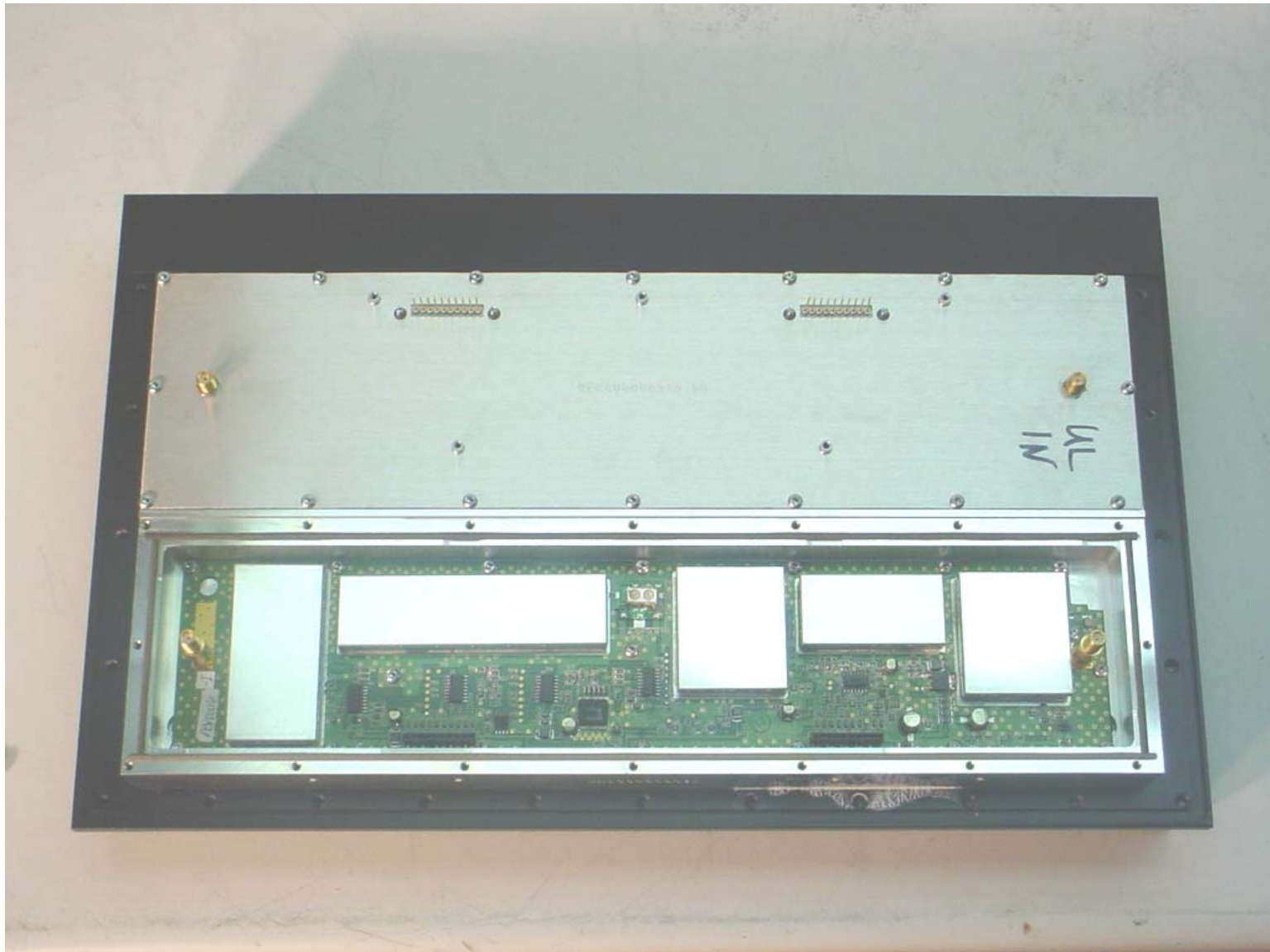
Annex 3 – Internal Photographs of The EUT
In-Hancer Plus Bi-Directional Amplifier, Model SB800

Photo # 13
FCC ID: H6M-SB800
IC: 1541A-SB800



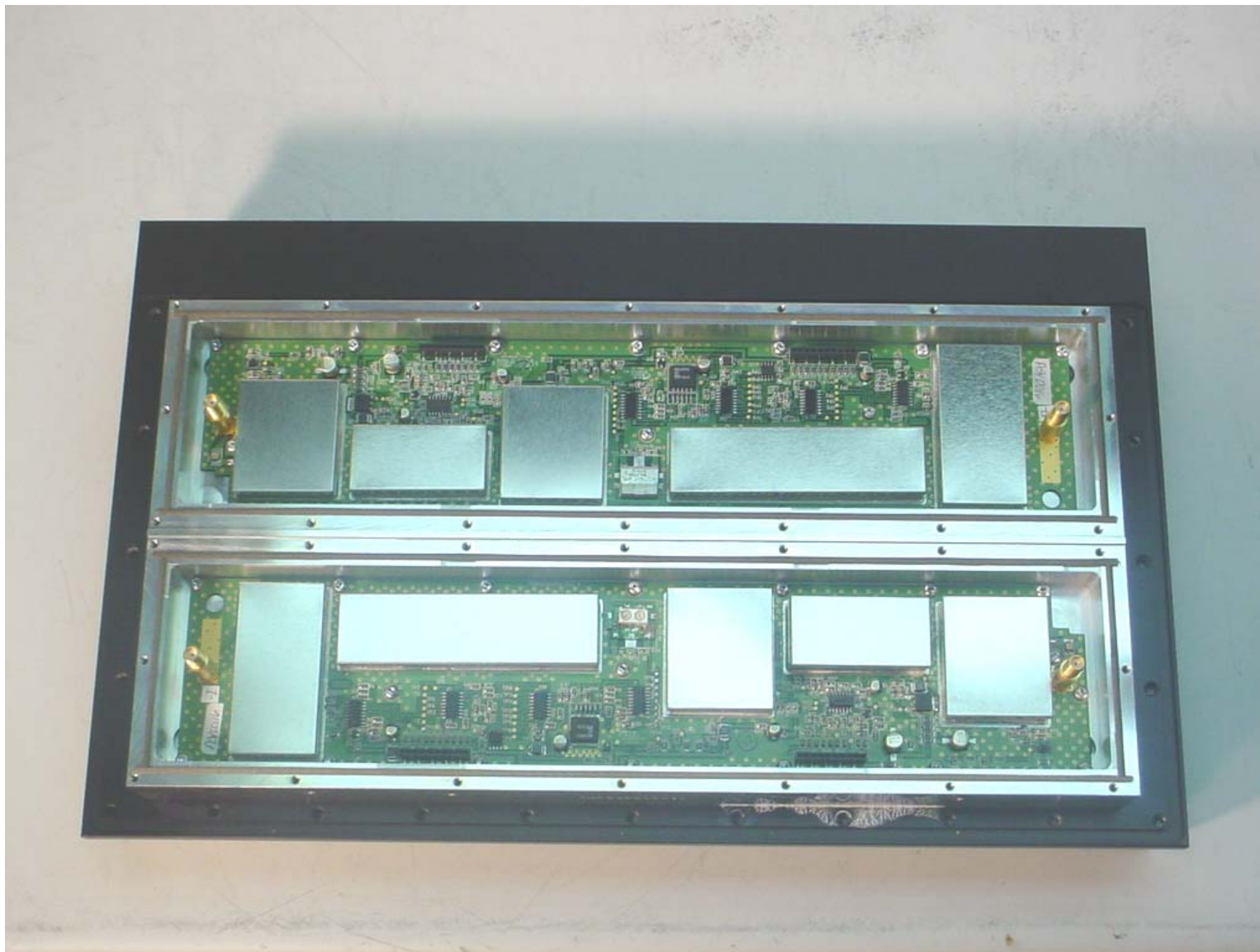
Annex 3 – Internal Photographs of The EUT
In-Hancer Plus Bi-Directional Amplifier, Model SB800

Photo # 14
FCC ID: H6M-SB800
IC: 1541A-SB800



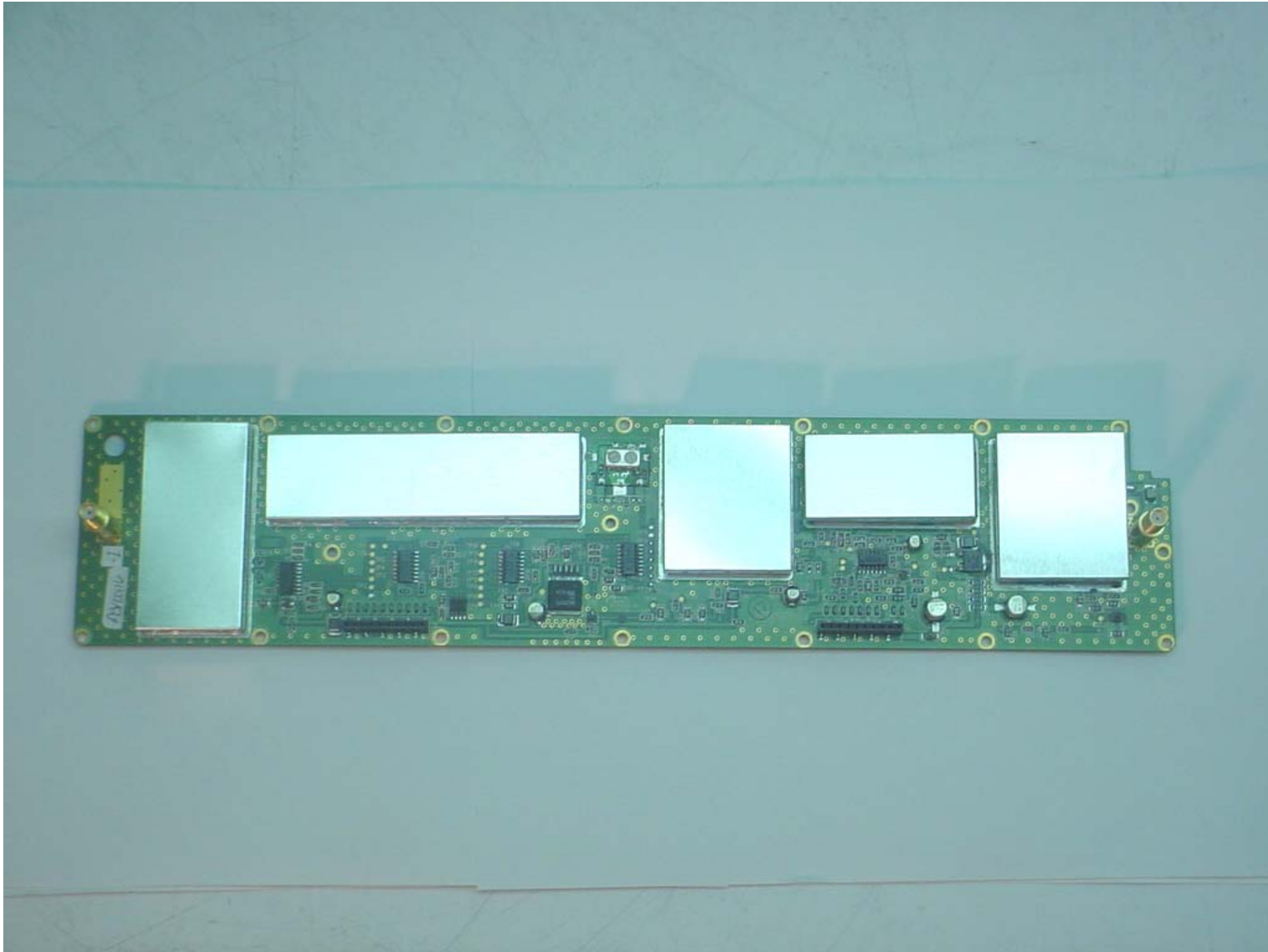
Annex 3 – Internal Photographs of The EUT
In-Hancer Plus Bi-Directional Amplifier, Model SB800

Photo # 15
FCC ID: H6M-SB800
IC: 1541A-SB800



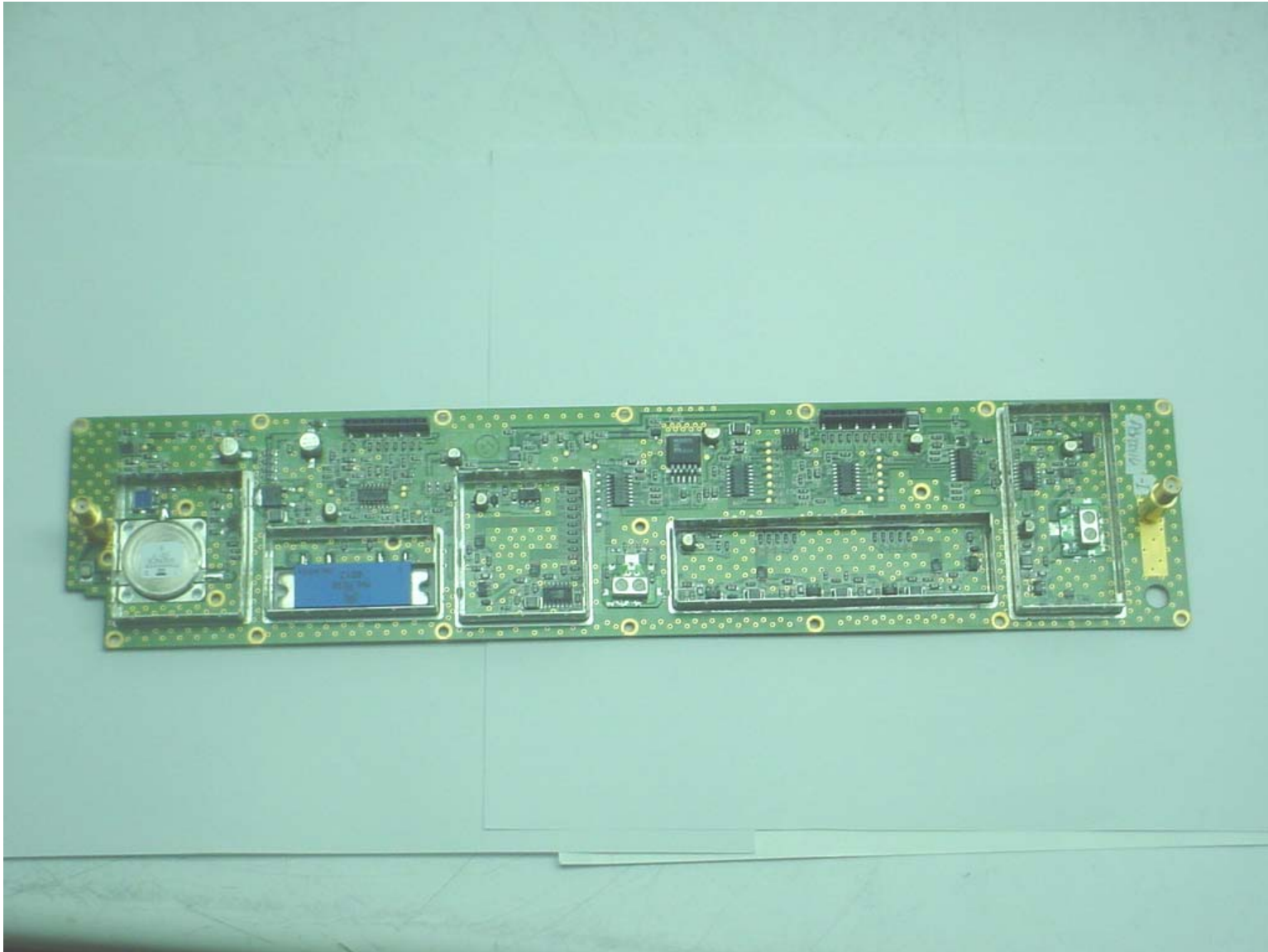
Annex 3 – Internal Photographs of The EUT
In-Hancer Plus Bi-Directional Amplifier, Model SB800

Photo # 16
FCC ID: H6M-SB800
IC: 1541A-SB800



Annex 3 – Internal Photographs of The EUT
In-Hancer Plus Bi-Directional Amplifier, Model SB800

Photo # 17
FCC ID: H6M-SB800
IC: 1541A-SB800



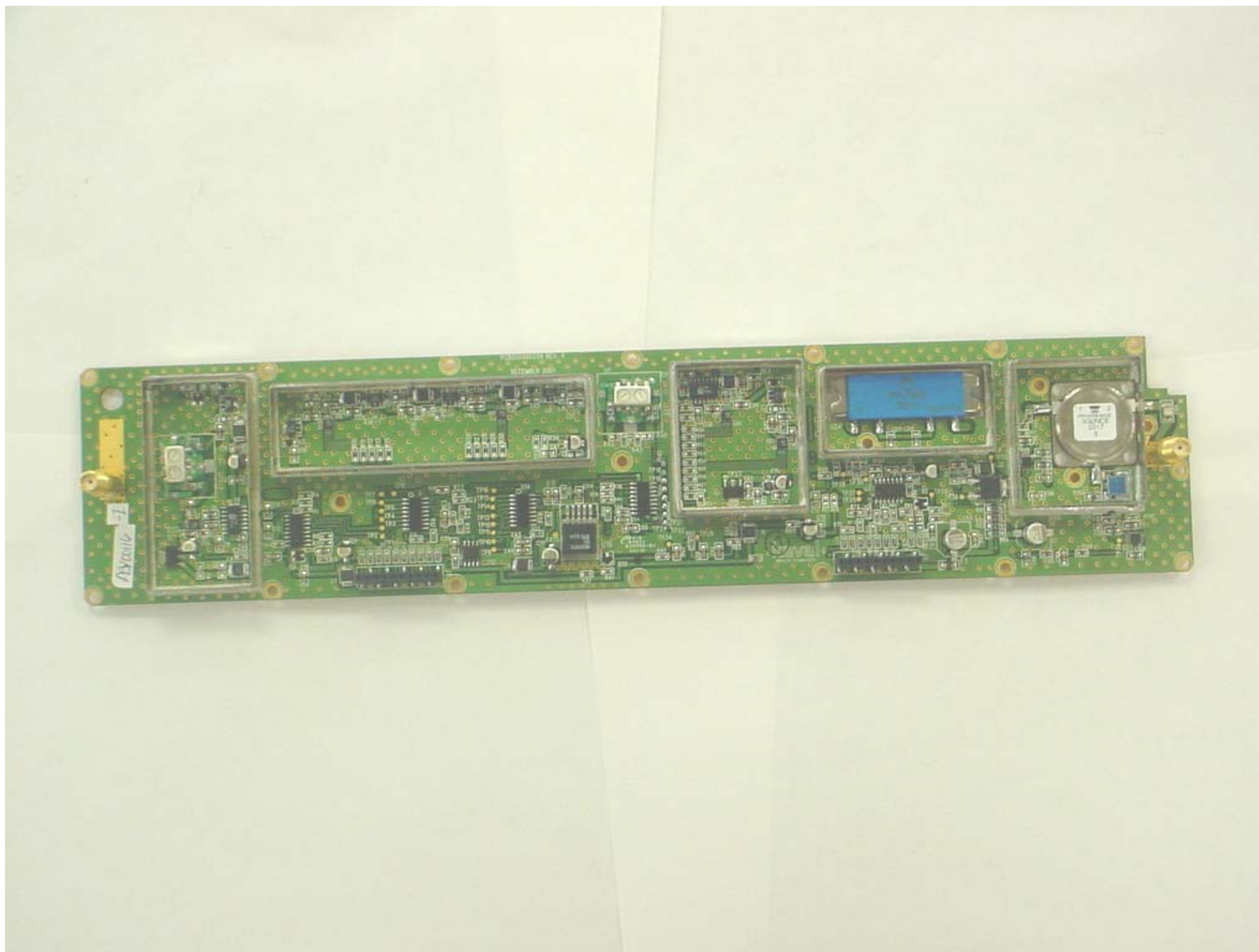
Annex 3 – Internal Photographs of The EUT
In-Hancer Plus Bi-Directional Amplifier, Model SB800

Photo # 18
FCC ID: H6M-SB800
IC: 1541A-SB800



Annex 3 – Internal Photographs of The EUT
In-Hancer Plus Bi-Directional Amplifier, Model SB800

Photo # 19
FCC ID: H6M-SB800
IC: 1541A-SB800



Annex 3 – Internal Photographs of The EUT
In-Hancer Plus Bi-Directional Amplifier, Model SB800

Photo # 20
FCC ID: H6M-SB800
IC: 1541A-SB800

