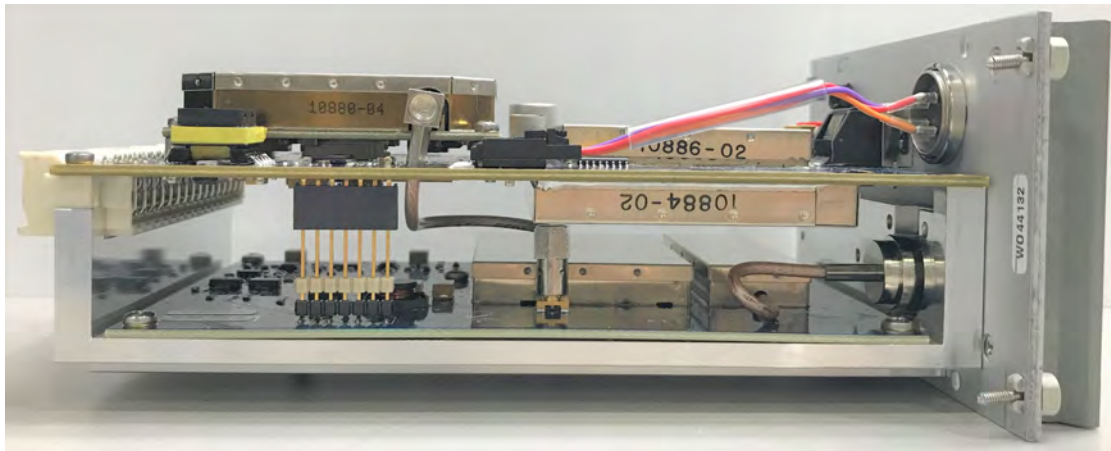
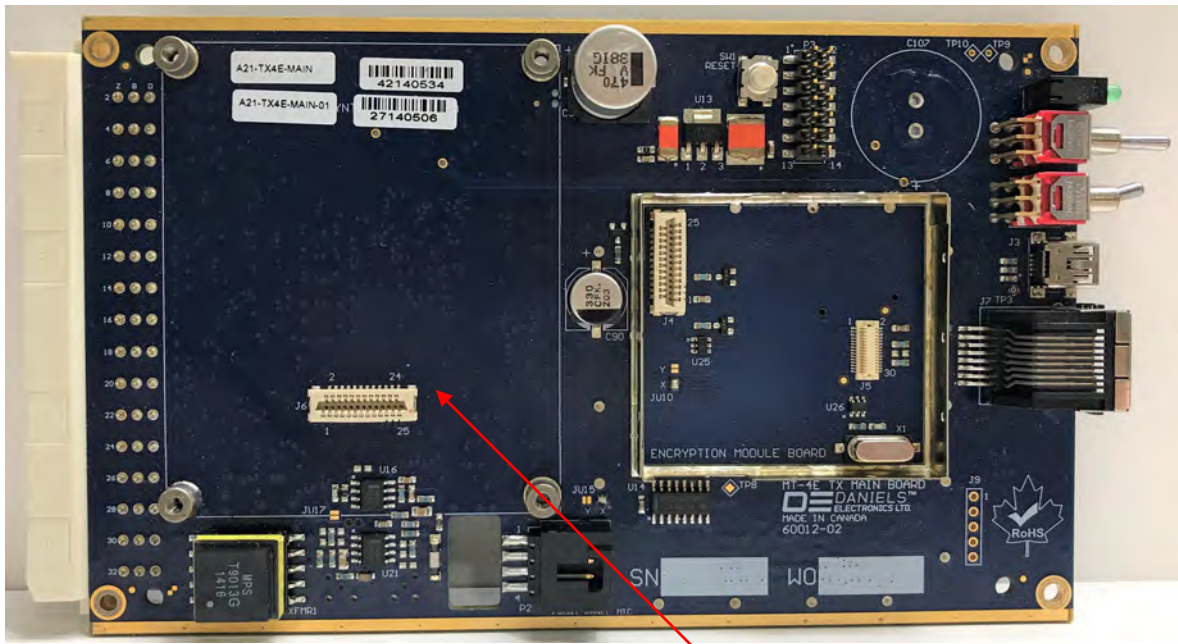


Transmitter Front View without Case

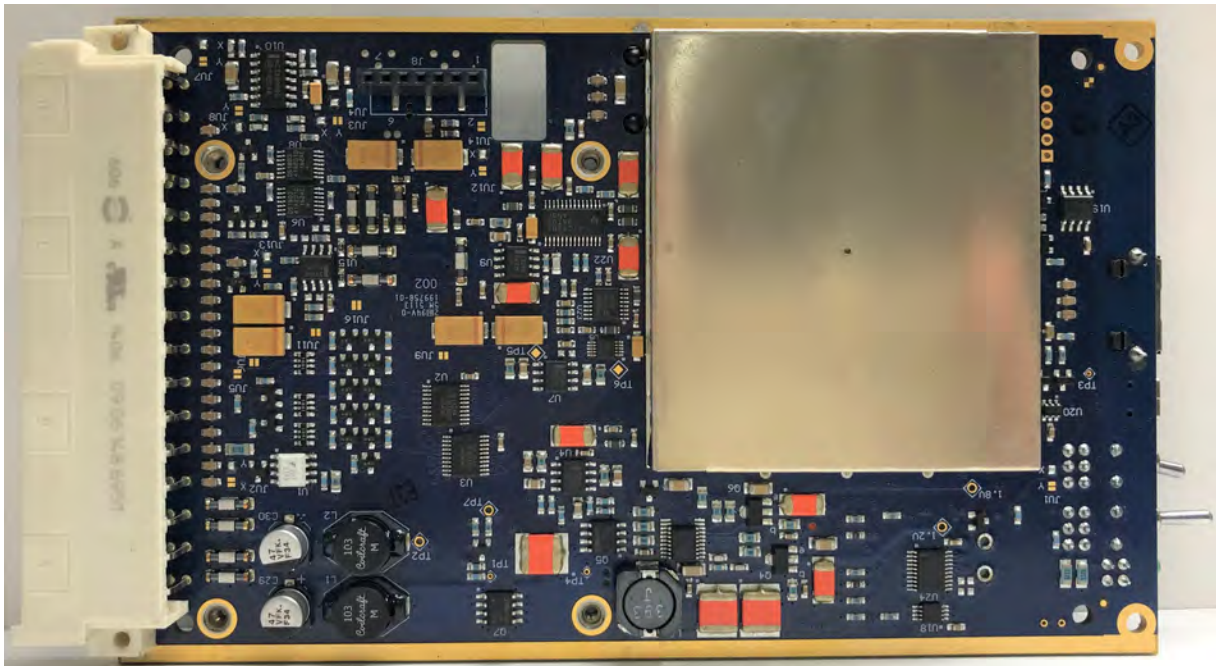


Transmitter Side View without Case

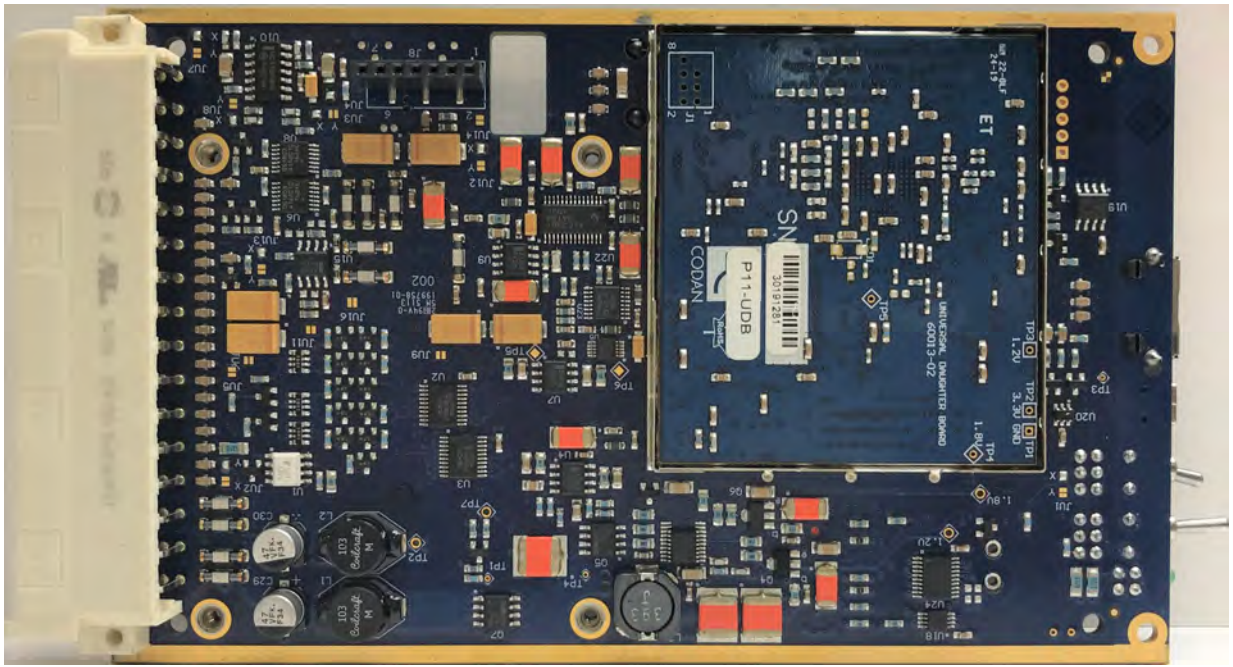


Synthesizer

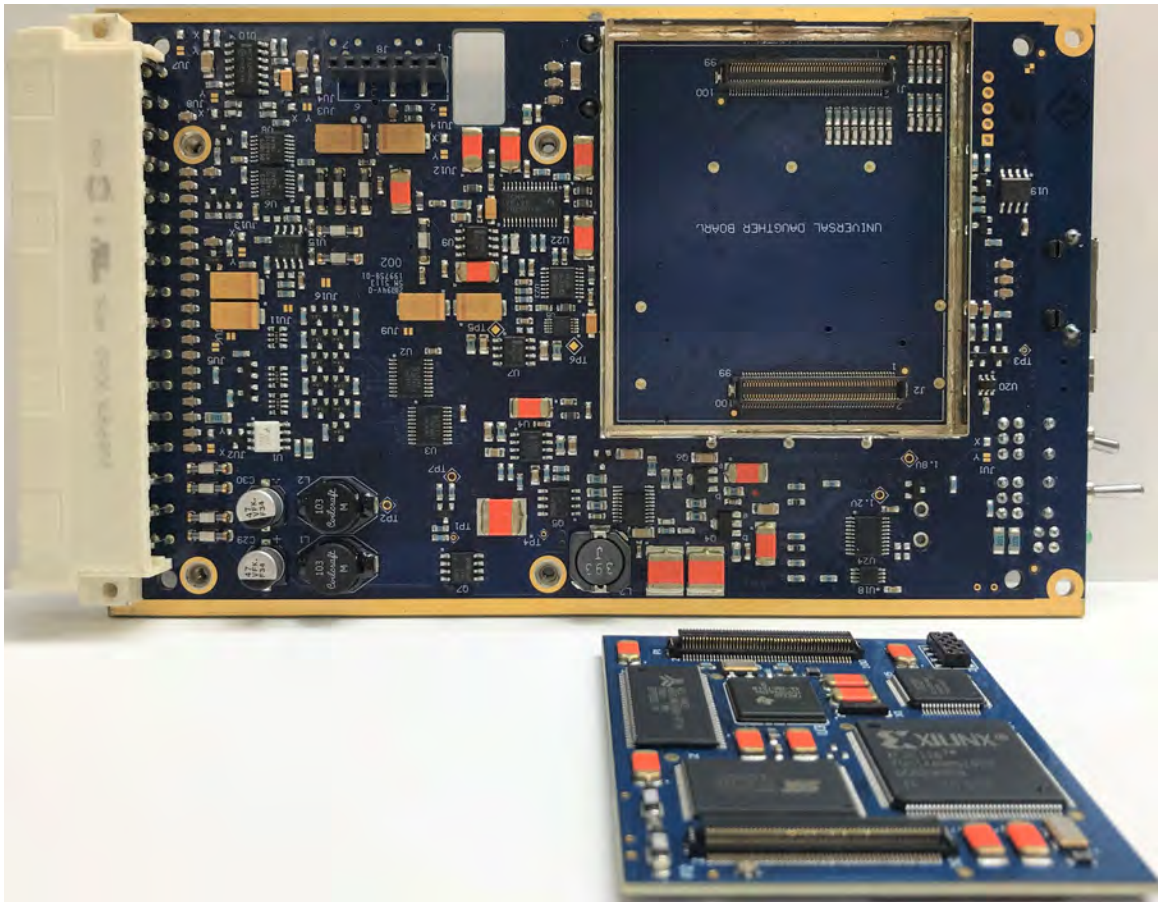
Main Board – Top Side, Synthesizer Removed



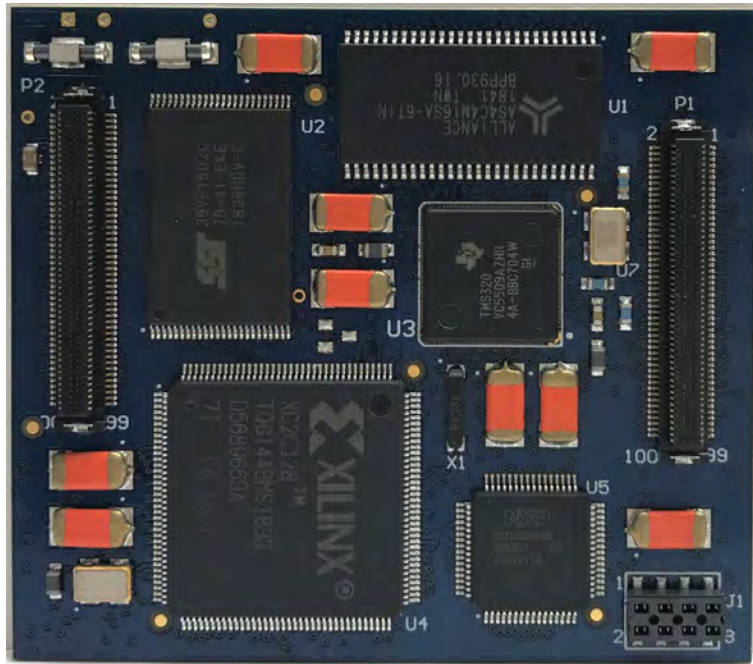
Main Board – Bottom Side, UDB Shields Installed



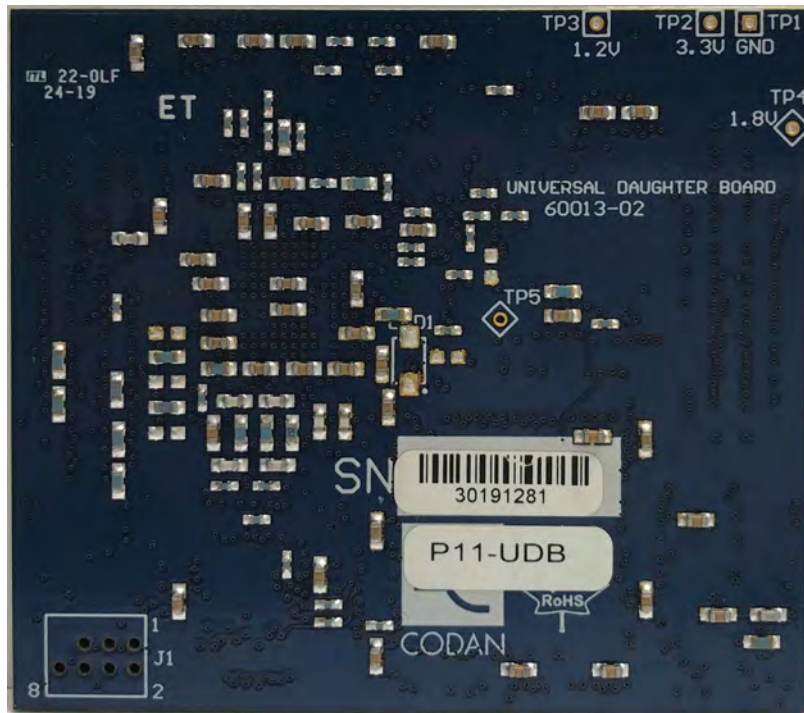
Main Board – Bottom Side, UDB Shields Removed



Main Board – Bottom Side, UDB Board Removed



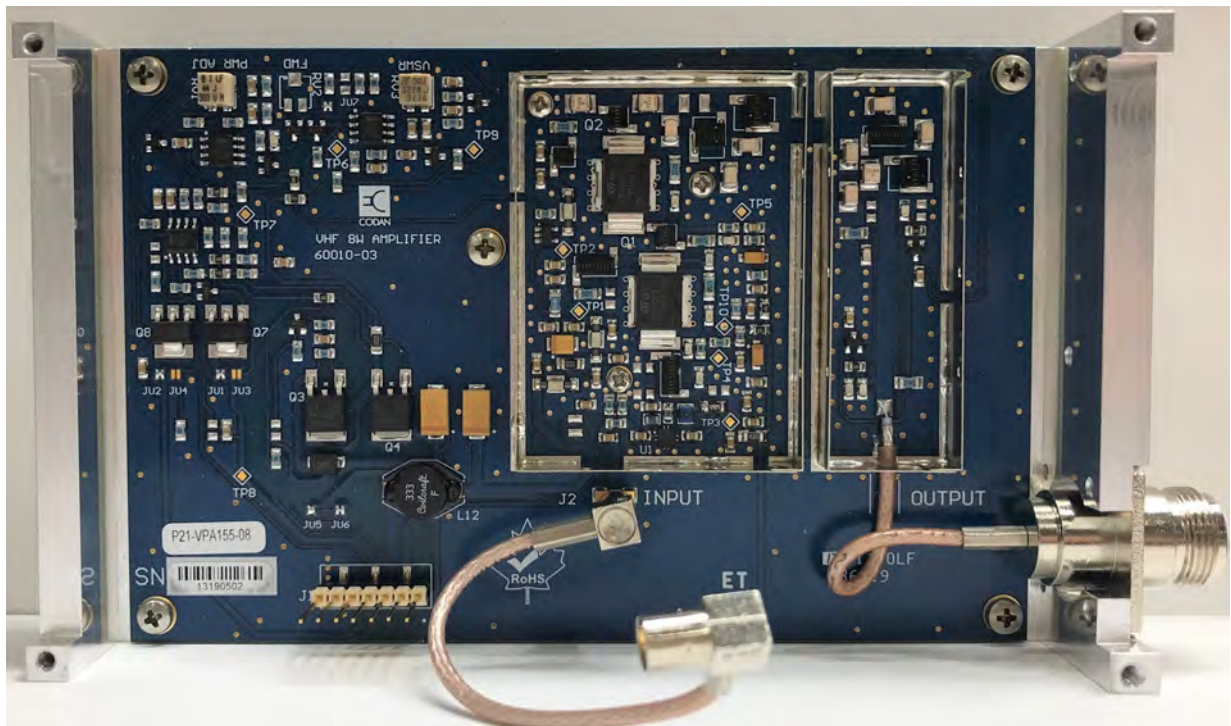
UDB Board – Bottom Side



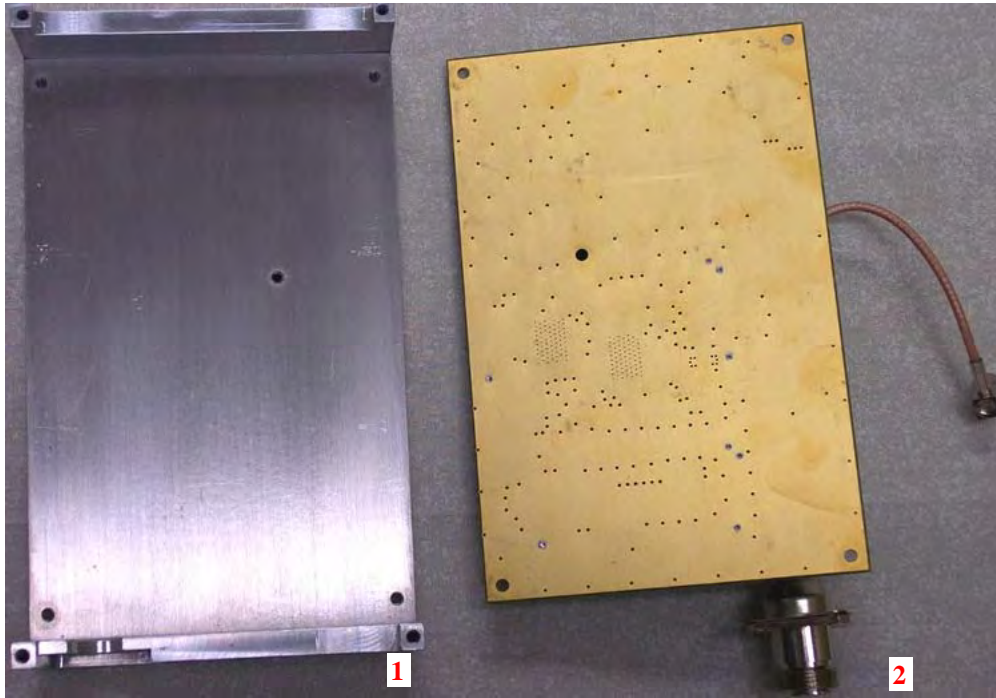
UDB Board – Top Side



Power Amplifier Board – Top Side, Shields Installed



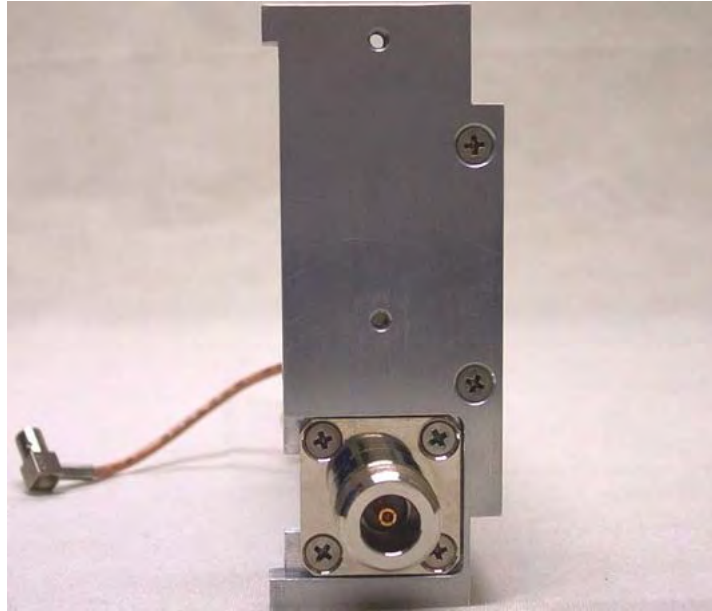
Power Amplifier Board – Top Side, Shield Removed



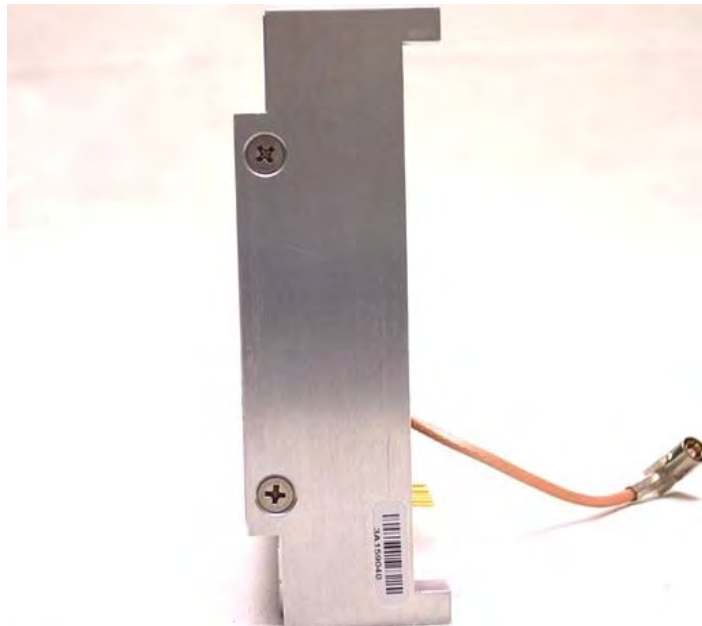
Power Amplifier – (1) Heat-Sink Inside, (2) Board Bottom Side



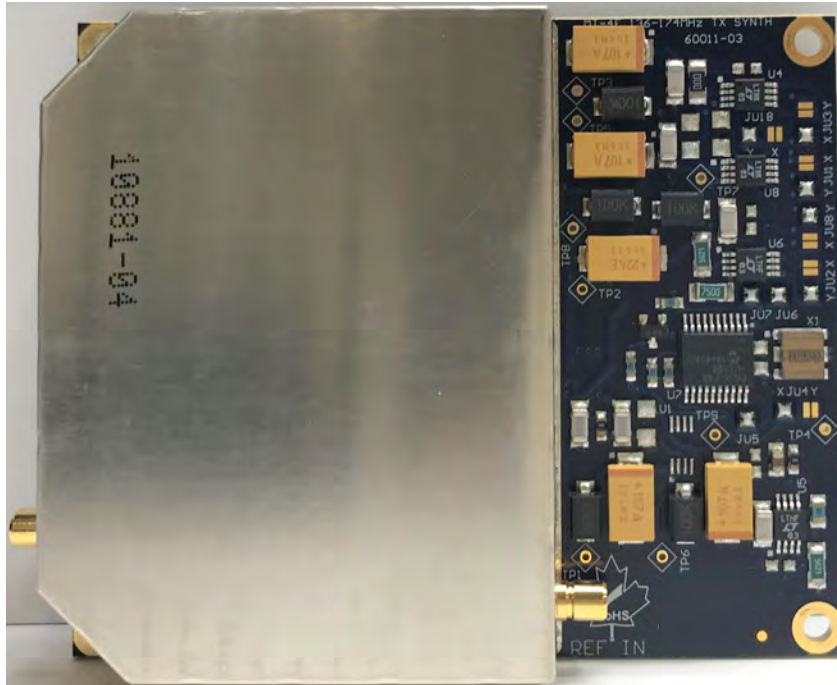
Power Amplifier – Heat-Sink Outside



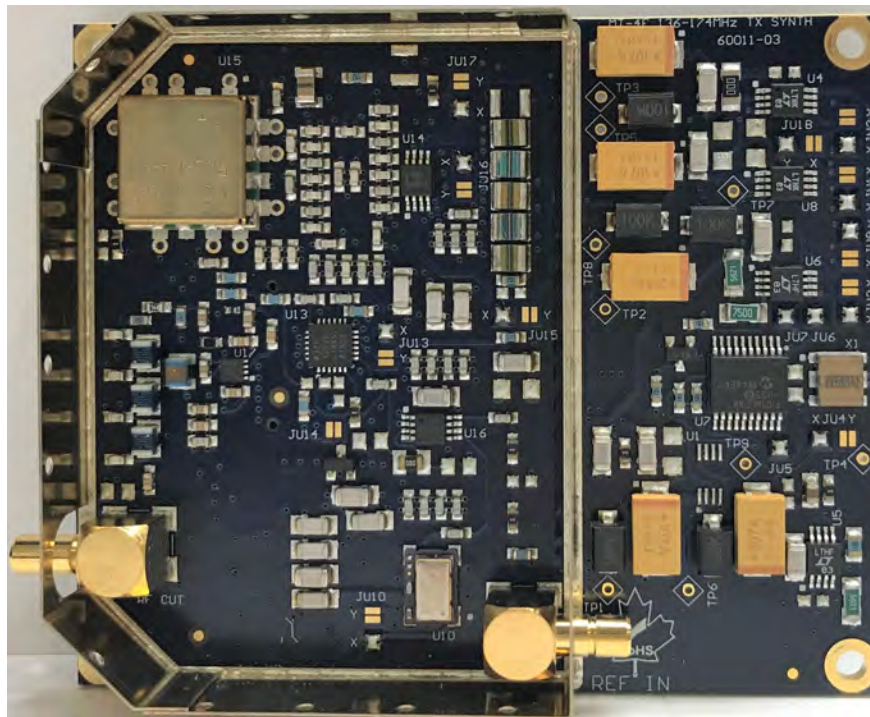
Power Amplifier – Heat-Sink Front Side



Power Amplifier – Heat-Sink Rear Side

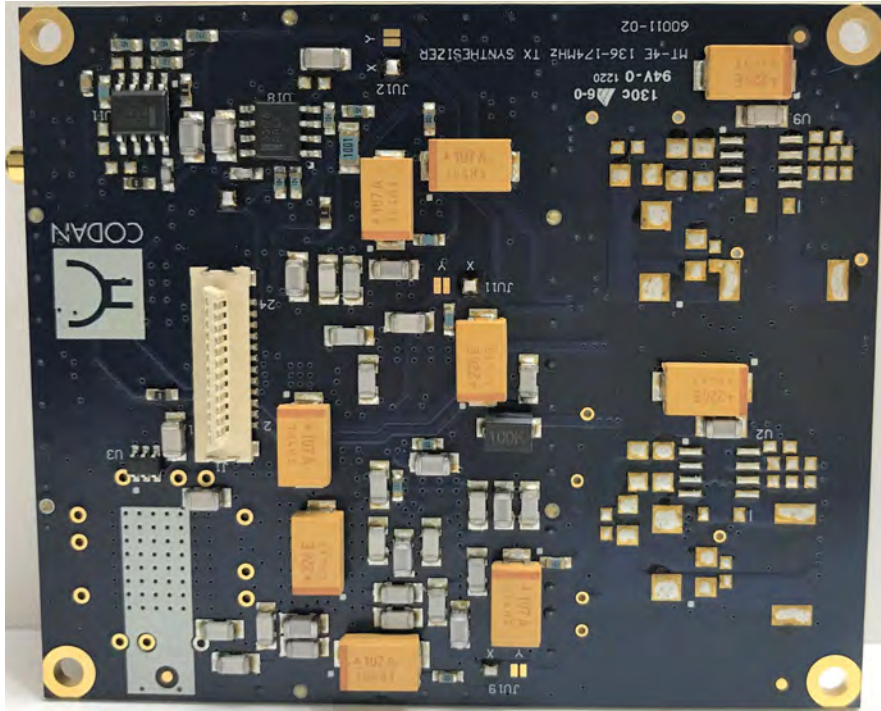


Synthesizer Board - Top Side with Shield Installed



Synthesizer Board - Top Side with Shield Removed





Synthesizer Board - Bottom Side