



Transmitter Front View with Case (1)



Transmitter Front View with Case (2)



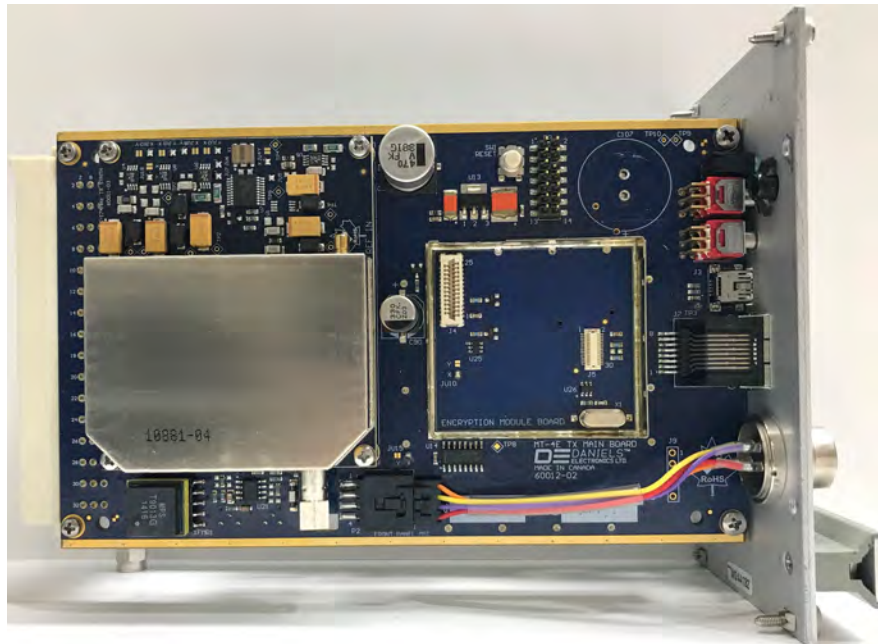
Transmitter Side View with Case (1)



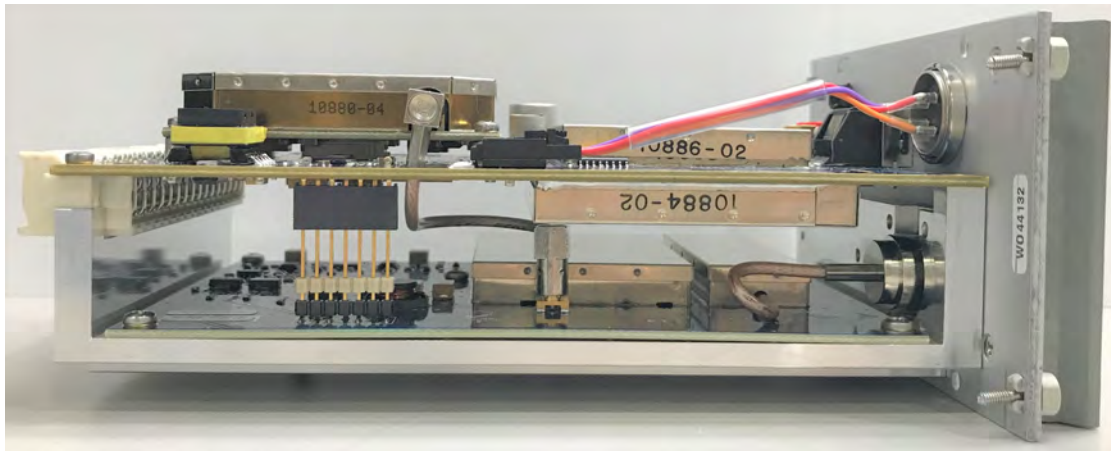
Transmitter Side View with Case (2)



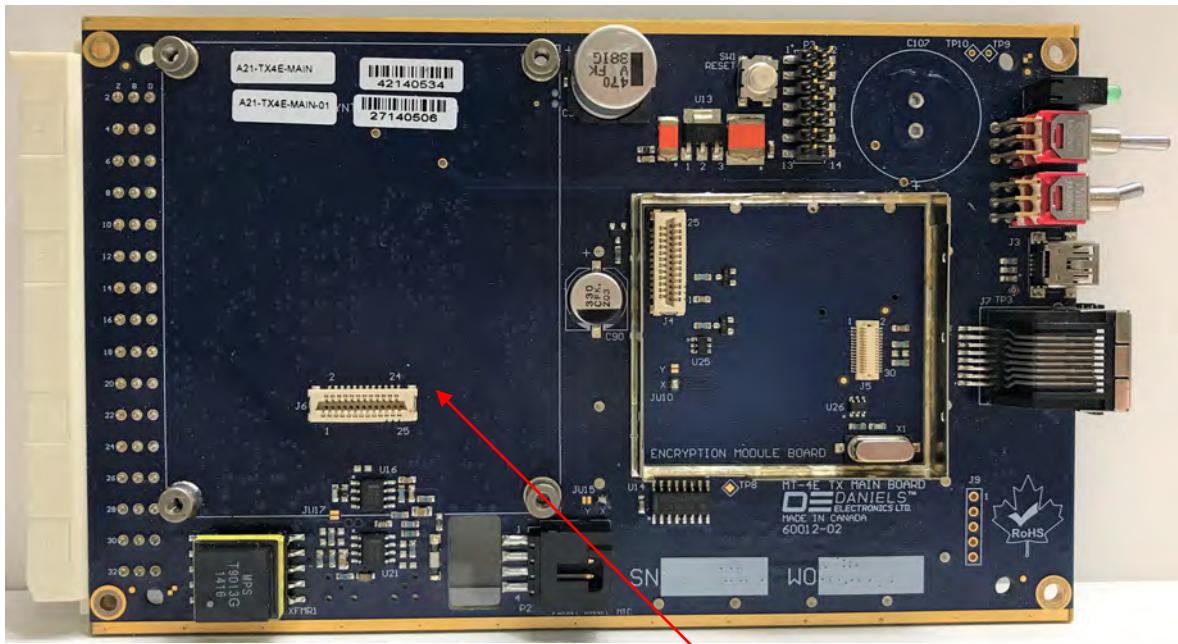
Transmitter Rear View with Case



Transmitter Front View without Case

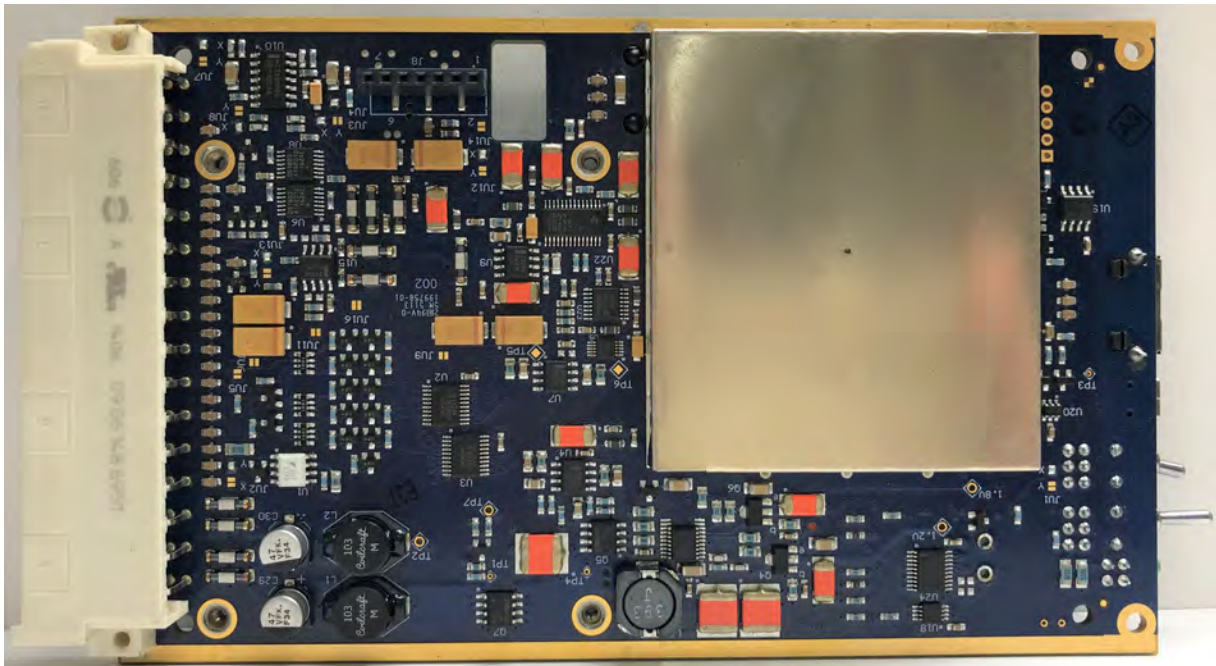


Transmitter Side View without Case

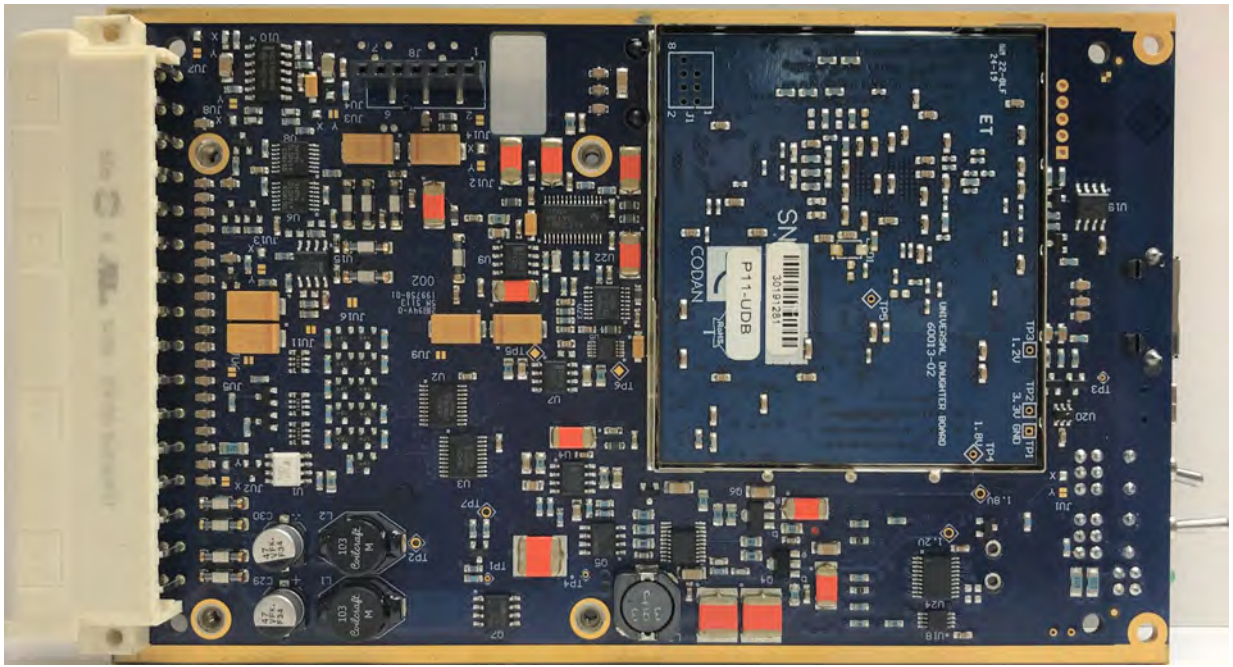


Synthesizer

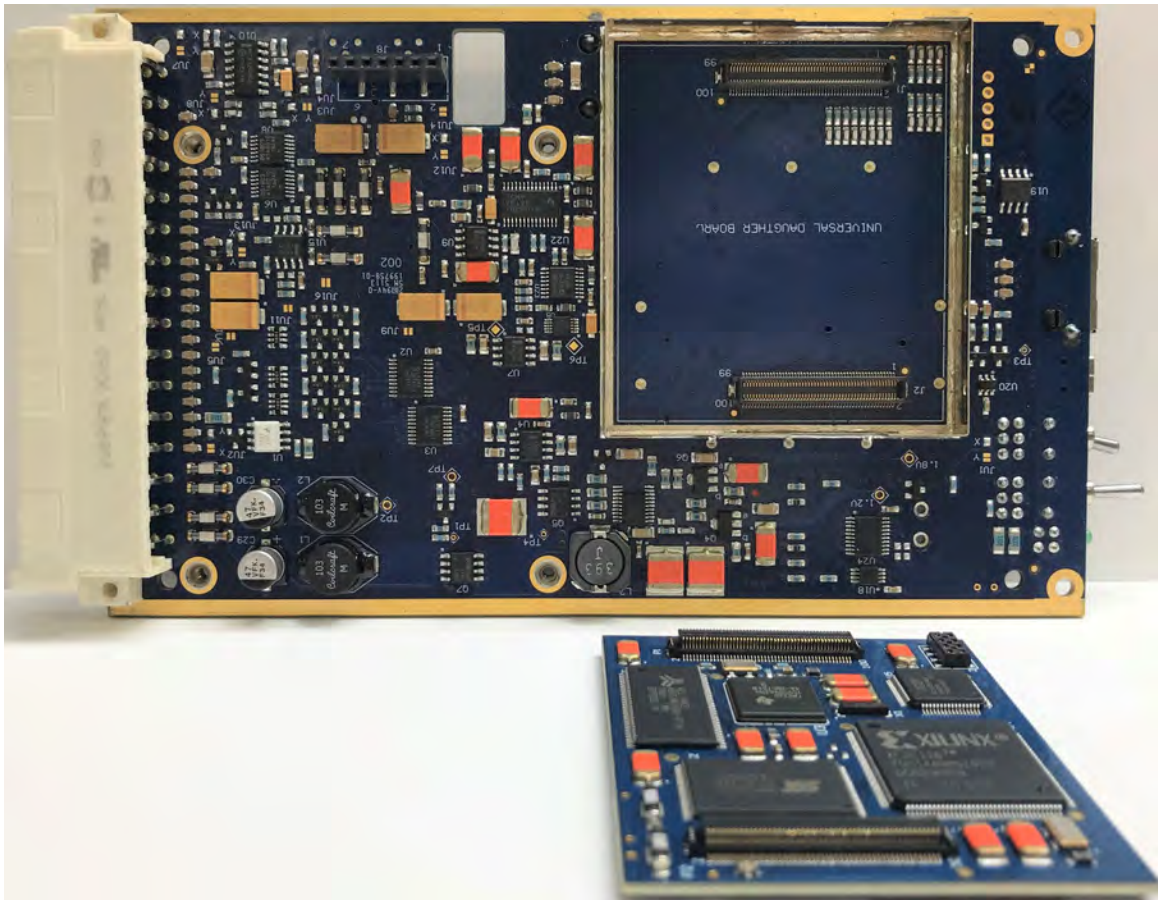
Main Board – Top Side, Synthesizer Removed



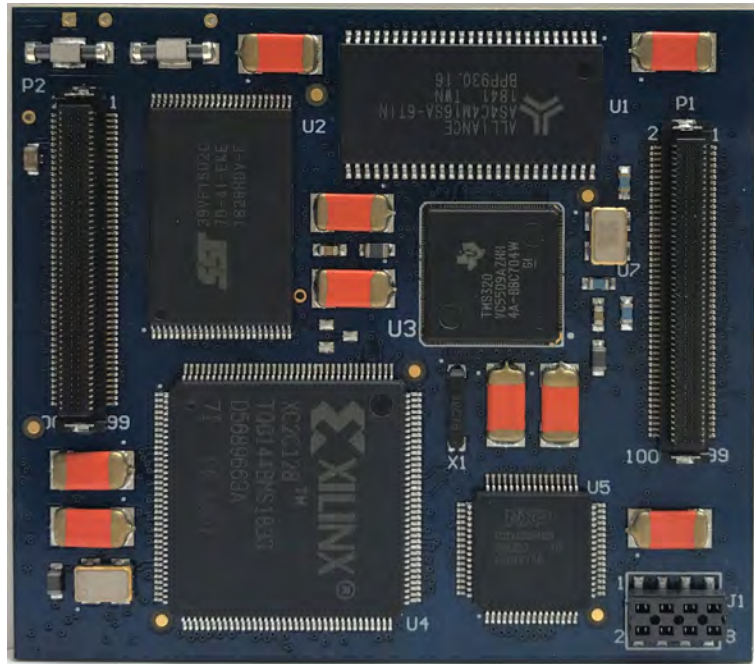
Main Board – Bottom Side, UDB Shields Installed



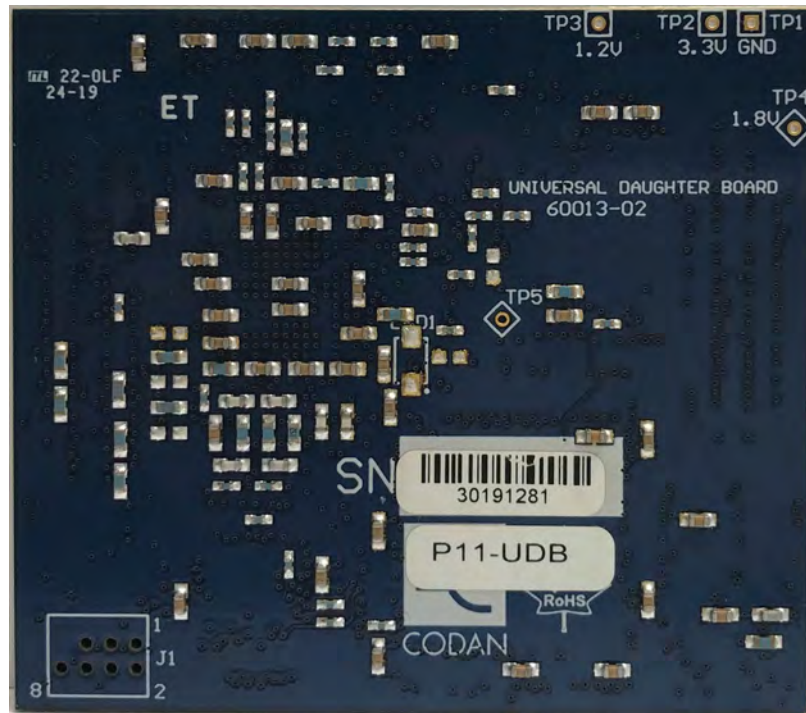
Main Board – Bottom Side, UDB Shields Removed



Main Board – Bottom Side, UDB Board Removed



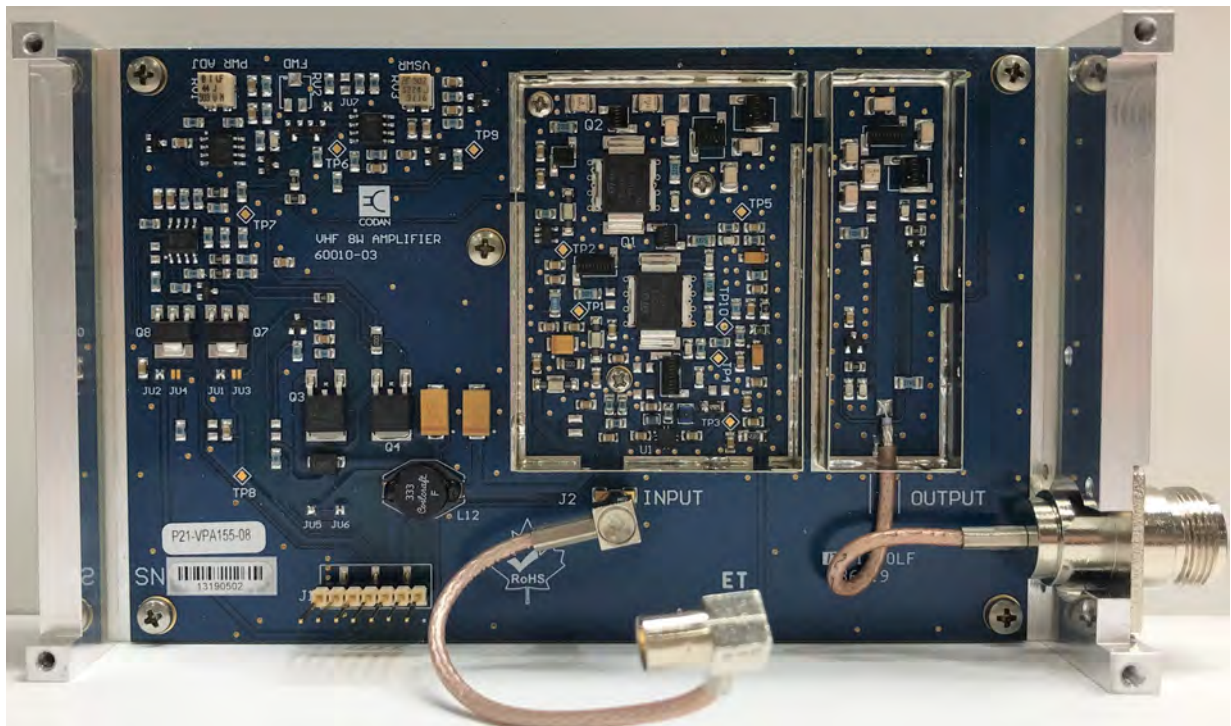
UDB Board – Bottom Side



UDB Board – Top Side

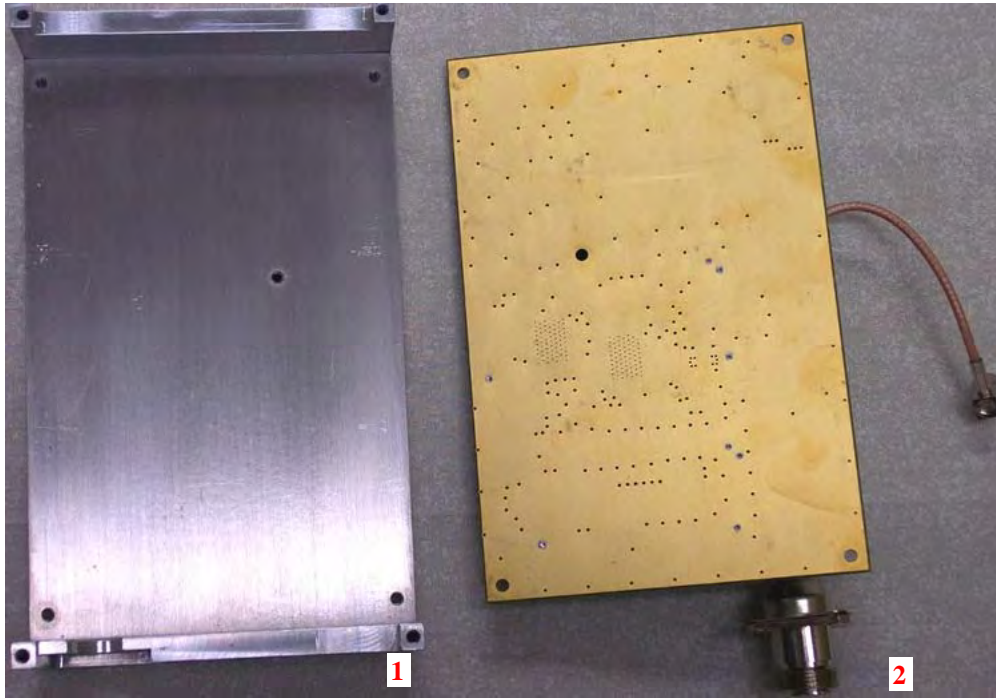


Power Amplifier Board – Top Side, Shields Installed



Power Amplifier Board – Top Side, Shield Removed

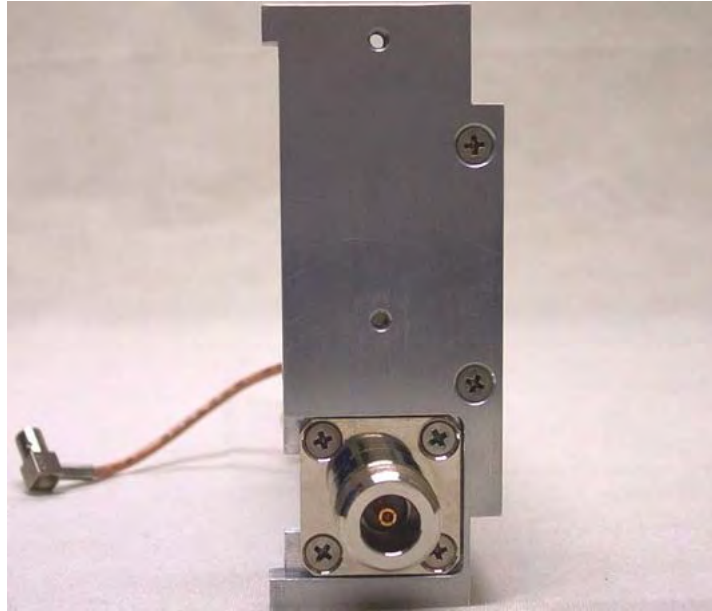




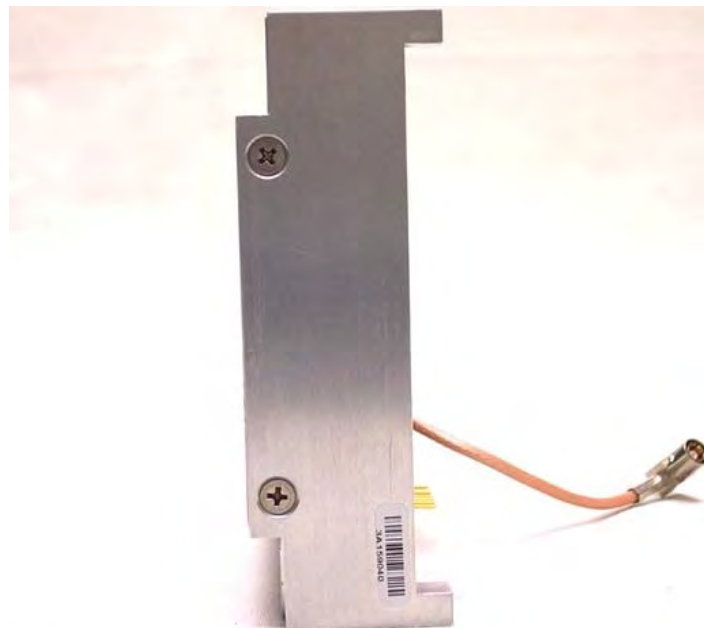
Power Amplifier – (1) Heat-Sink Inside, (2) Board Bottom Side



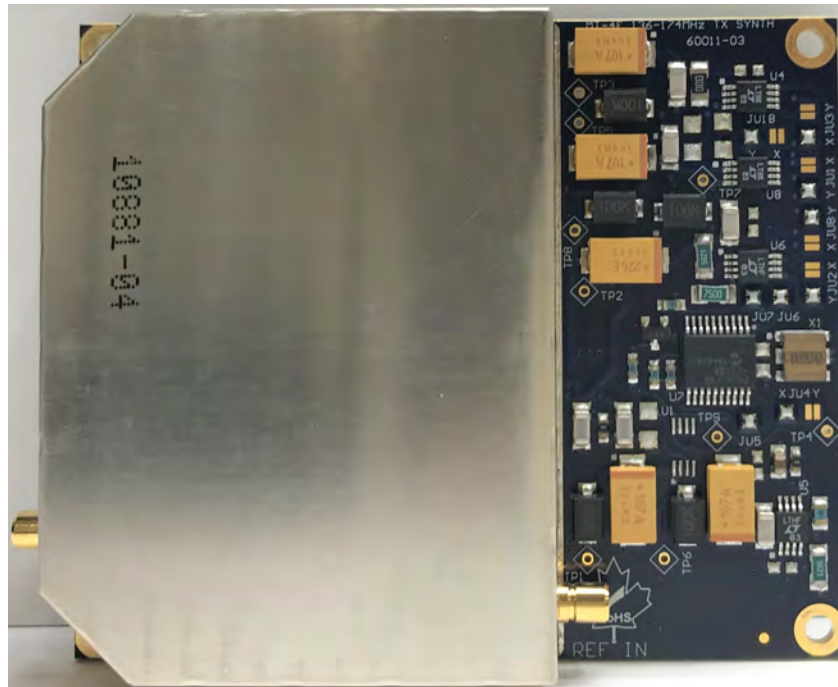
Power Amplifier – Heat-Sink Outside



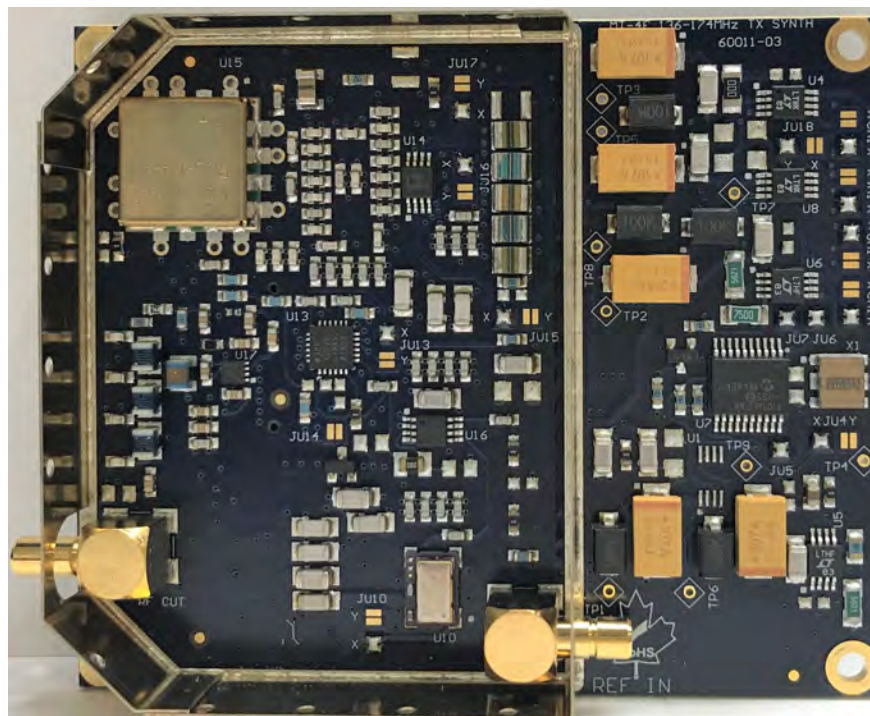
Power Amplifier – Heat-Sink Front Side



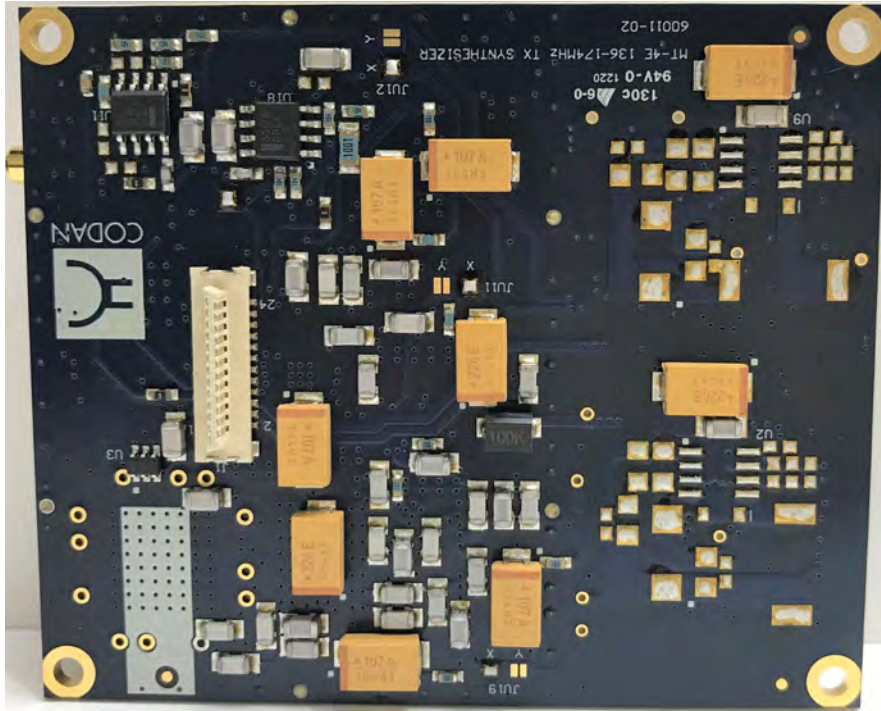
Power Amplifier – Heat-Sink Rear Side



Synthesizer Board - Top Side with Shield Installed



Synthesizer Board - Top Side with Shield Removed



Synthesizer Board - Bottom Side