



TRANSMITTER

MADE IN CANADA  
TYPE 341 30-171013

TX

NORM  
DEF  
KEY TX

MIC

REFERENCE

INPUT

RF OUT

RECEIVER

MADE IN CANADA  
TYPE 341 30-1710210

SQ. DISABLE

NORM  
OFF

REFERENCE

INPUT

RF IN

SYSTEM MONITOR

FUNCTION

12  
11  
10  
9  
8  
7  
6  
5  
4  
3  
2  
1

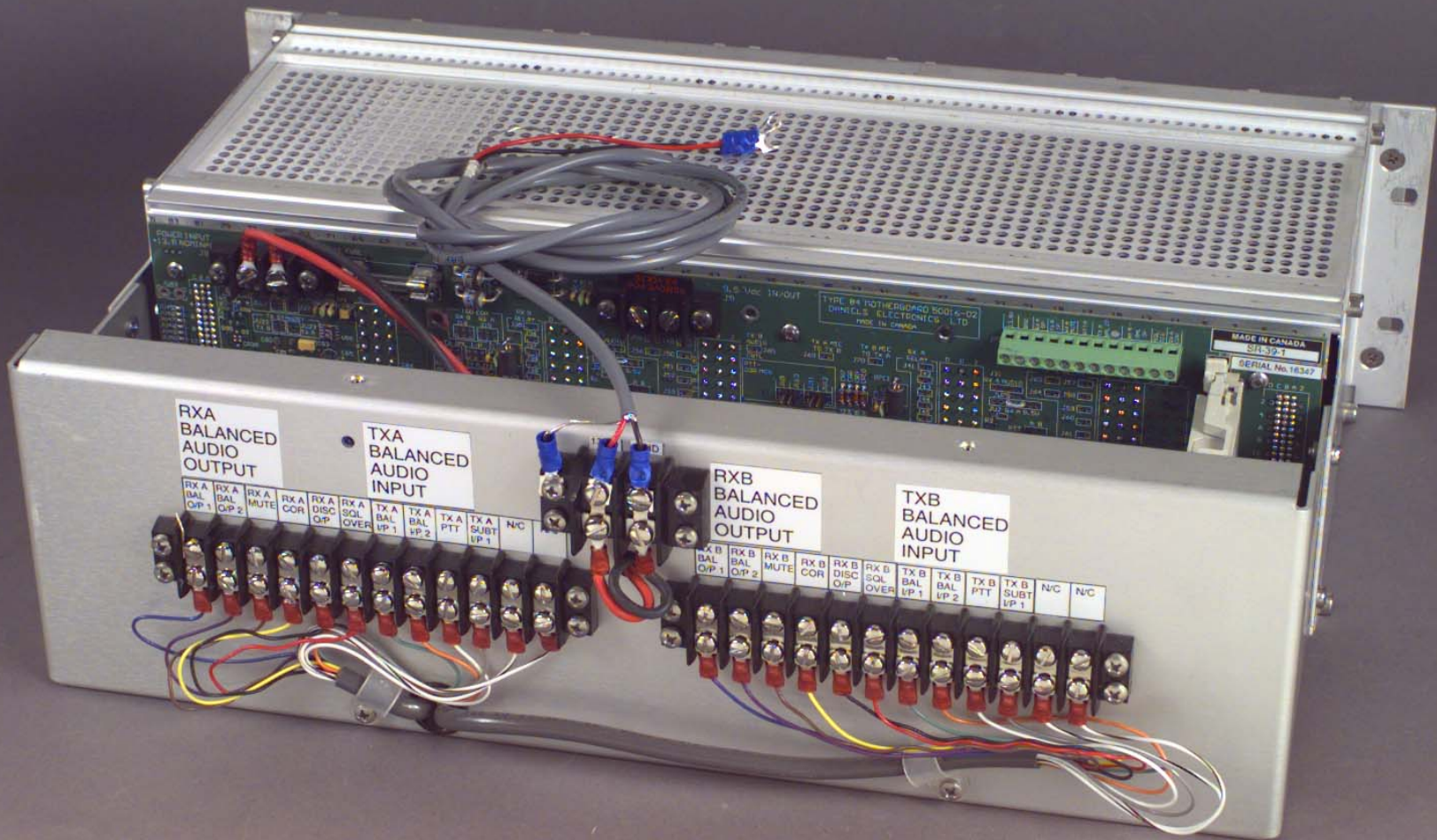
PTT

AUDIO

VOL

METER

DANIELS  
ELECTRONICS LTD.



RXA  
BALANCED  
AUDIO  
OUTPUT

TXA  
BALANCED  
AUDIO  
INPUT

RXB  
BALANCED  
AUDIO  
OUTPUT

TXB  
BALANCED  
AUDIO  
INPUT

|                      |                      |              |             |                     |                     |                      |                      |             |                       |     |
|----------------------|----------------------|--------------|-------------|---------------------|---------------------|----------------------|----------------------|-------------|-----------------------|-----|
| RX A<br>BAL<br>O/P 1 | RX A<br>BAL<br>O/P 2 | RX A<br>MUTE | RX A<br>COR | RX A<br>DISC<br>O/P | RX A<br>SQL<br>OVER | TX A<br>BAL<br>I/P 1 | TX A<br>BAL<br>I/P 2 | TX A<br>PTT | TX A<br>SUBT<br>I/P 1 | N/C |
|----------------------|----------------------|--------------|-------------|---------------------|---------------------|----------------------|----------------------|-------------|-----------------------|-----|

|                      |                      |              |             |                     |                     |                      |                      |             |                       |     |     |
|----------------------|----------------------|--------------|-------------|---------------------|---------------------|----------------------|----------------------|-------------|-----------------------|-----|-----|
| RX B<br>BAL<br>O/P 1 | RX B<br>BAL<br>O/P 2 | RX B<br>MUTE | RX B<br>COR | RX B<br>DISC<br>O/P | RX B<br>SQL<br>OVER | TX B<br>BAL<br>I/P 1 | TX B<br>BAL<br>I/P 2 | TX B<br>PTT | TX B<br>SUBT<br>I/P 1 | N/C | N/C |
|----------------------|----------------------|--------------|-------------|---------------------|---------------------|----------------------|----------------------|-------------|-----------------------|-----|-----|

TYPE 84 BROTHERHOOD SOCIETY OF AMATEUR RADIO OPERATORS  
ELECTRONICS  
TYPE 84 CHASSIS

MADE IN CANADA  
SH5791  
SERIAL No. 16347  
D.C.B. #2



TRANSMITTER

MADE IN CANADA  
VT-3A130-SYD410

TX

NORM  
OFF  
KEY TX

MIC

REFERENCE

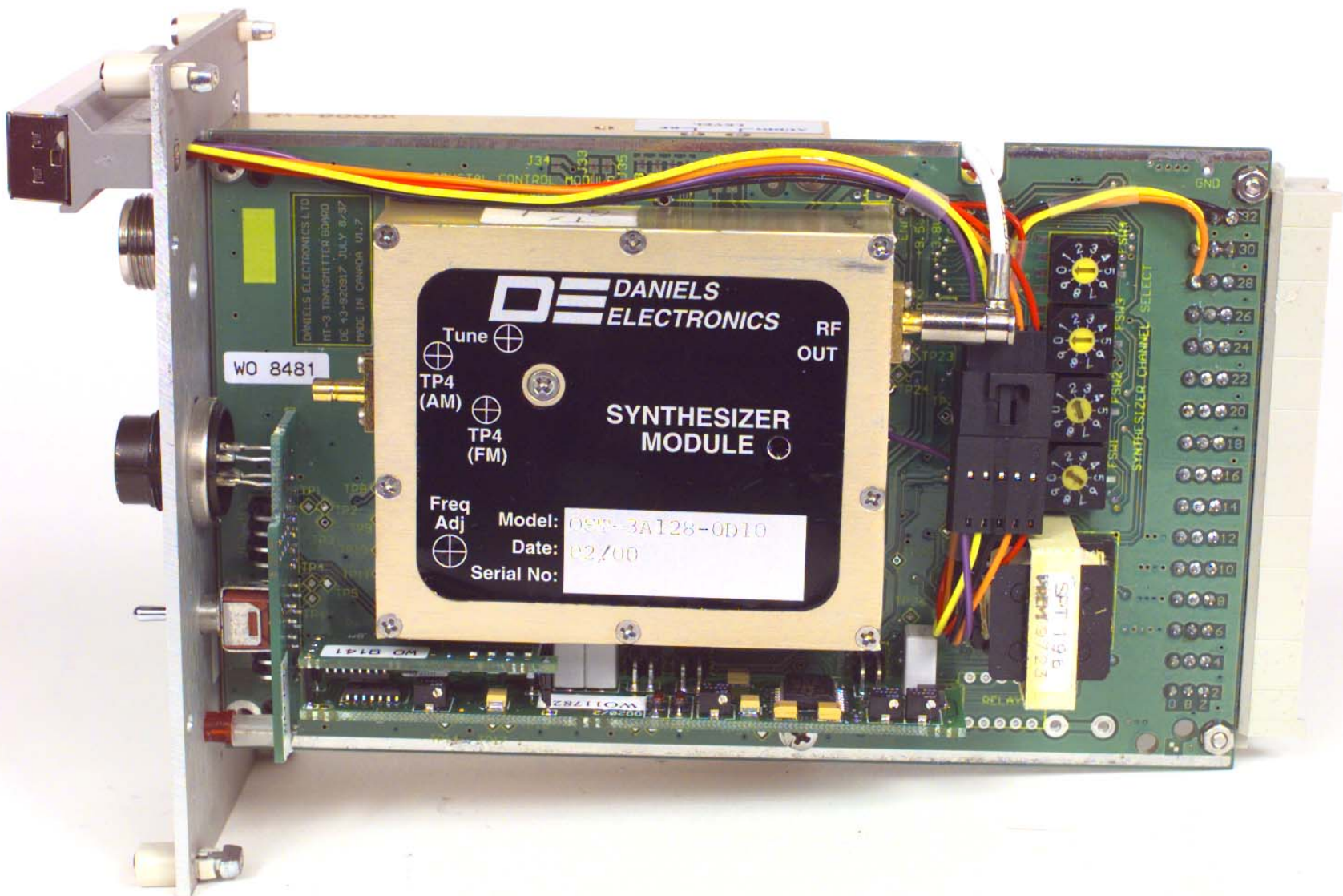
RF OUT

INPUT

Daniel Electronics Ltd







DANIELS ELECTRONICS LTD  
RT-3 TRANSITTER BOARD  
DS 43-820317 JULY 8/87  
MADE IN CANADA U1.7

WO 8481

**DE DANIELS ELECTRONICS** RF OUT

Tune ⊕ ⊕

TP4 (AM) ⊕

TP4 (FM) ⊕

Freq Adj ⊕

Model: OSM-3A128-0D10

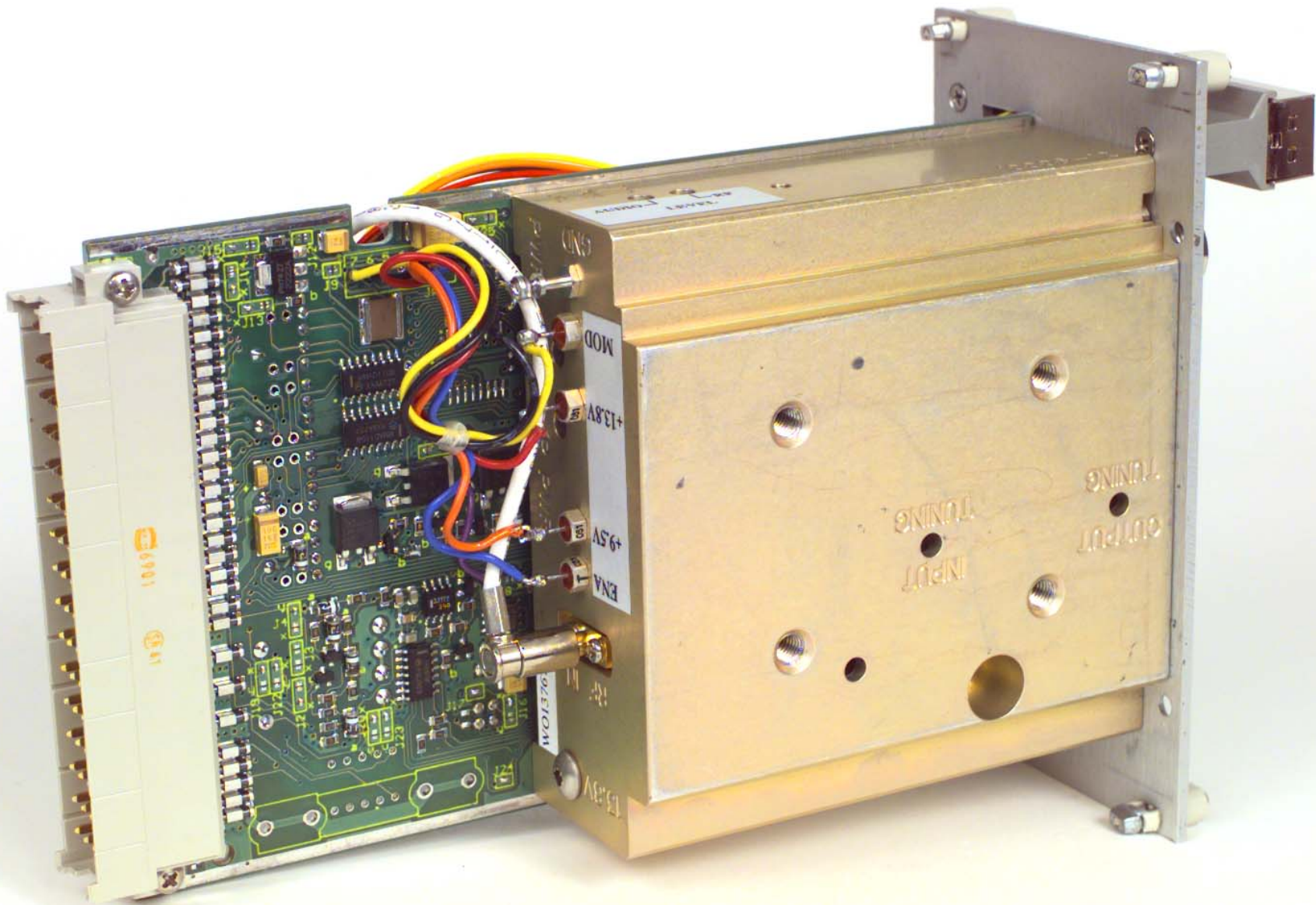
Date: 02/00

Serial No:

SPT 190  
W0819702

SYNTHESIZER CHANNEL SELECT

32  
30  
28  
26  
24  
22  
20  
18  
16  
14  
12  
10  
8  
6  
4  
2  
GND



6901

MOD

+13.8V

+5V

ENA

T

W01376

INPUT TUNING

OUTPUT TUNING

+5V

RECEIVER

MADE IN CANADA

VR-3A130-SYD210

SQ. DISABLE

NORM  
OFF

RF IN

REFERENCE

INPUT

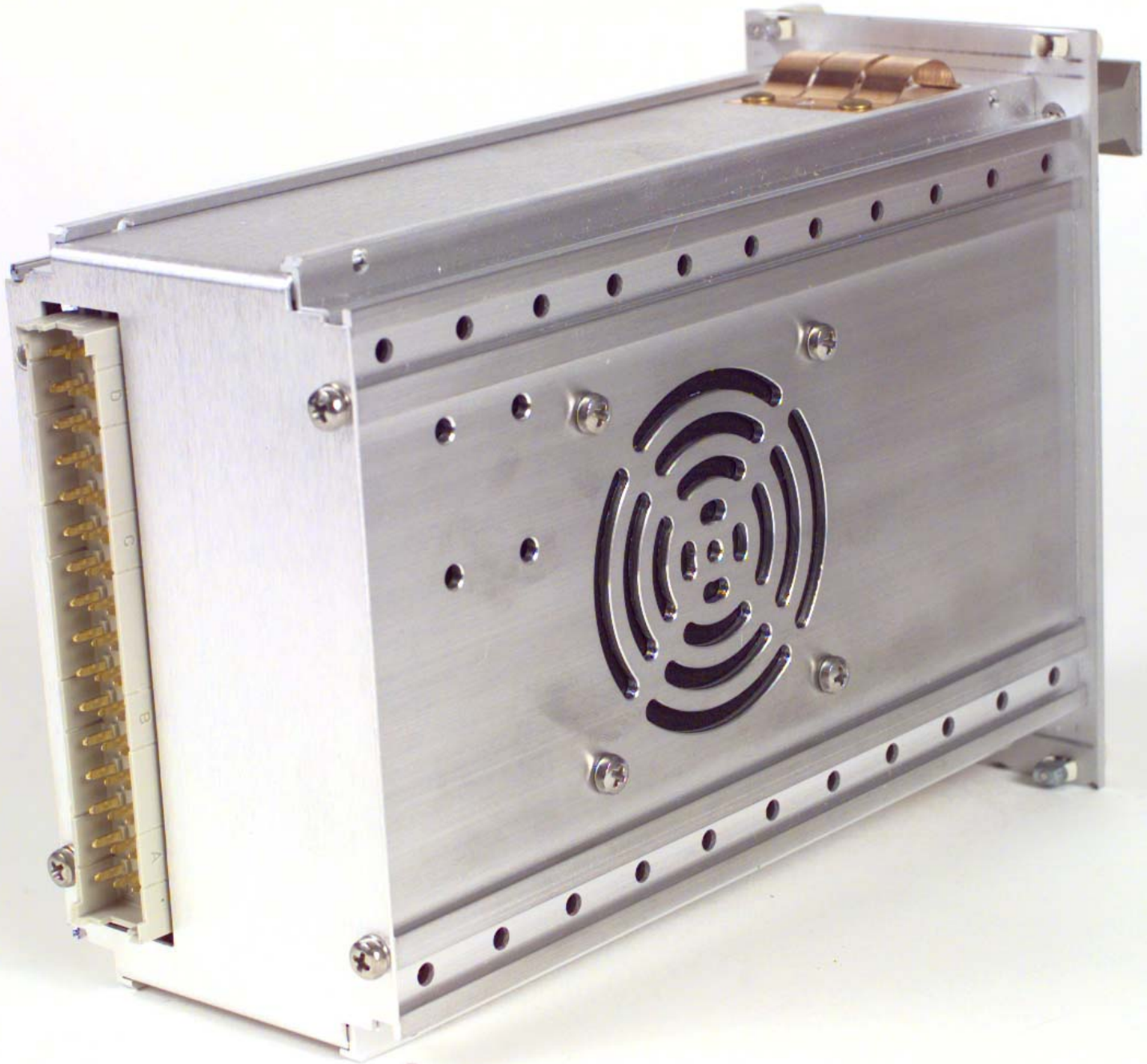
920228/2210.1/2210.2  
ITEM No 3 / 2000

DANIELS ELECTRONICS LTD.  
VICTORIA, B.C. CANADA

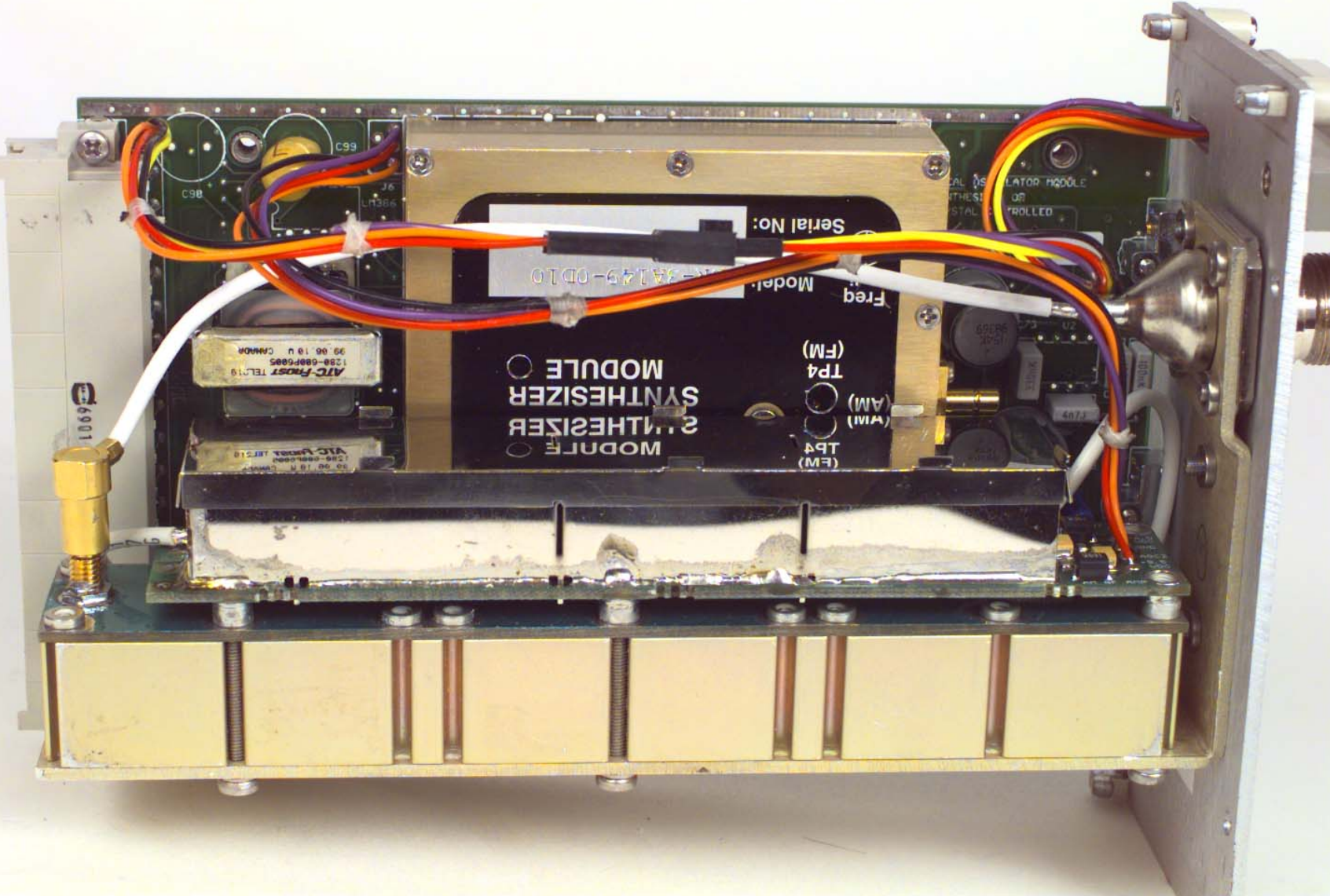
MODEL: VR-3A130-SY  
CANADA #: 142-TBA  
FCC ID: H4JVR-TBA  
SERIAL #: 50003  
DATE: 3/0

Daniels Electronics Ltd









Serial No: 3A145-0D10  
Model:

MODULE 2 SYNTHESIZER  
MODULE SYNTHESIZER

(FM)  
TP4  
(AM)  
LPT  
(FM)

ATC-FRONT TEL-19  
1289-088F0805  
39 06 18 U CANADA

ATC-FRONT TEL-19  
1289-088F0805  
39 06 18 U CANADA

REAL OSCILLATOR MODULE  
OR  
CRYSTAL CONTROLLED

6901

C9B  
J6  
LH384

C9A

2U  
C7

4N7

4N7

4N7

4N7

4N7

4N7

4N7

4N7

4N7

4N7

4N7

4N7

4N7

4N7

4N7

4N7

