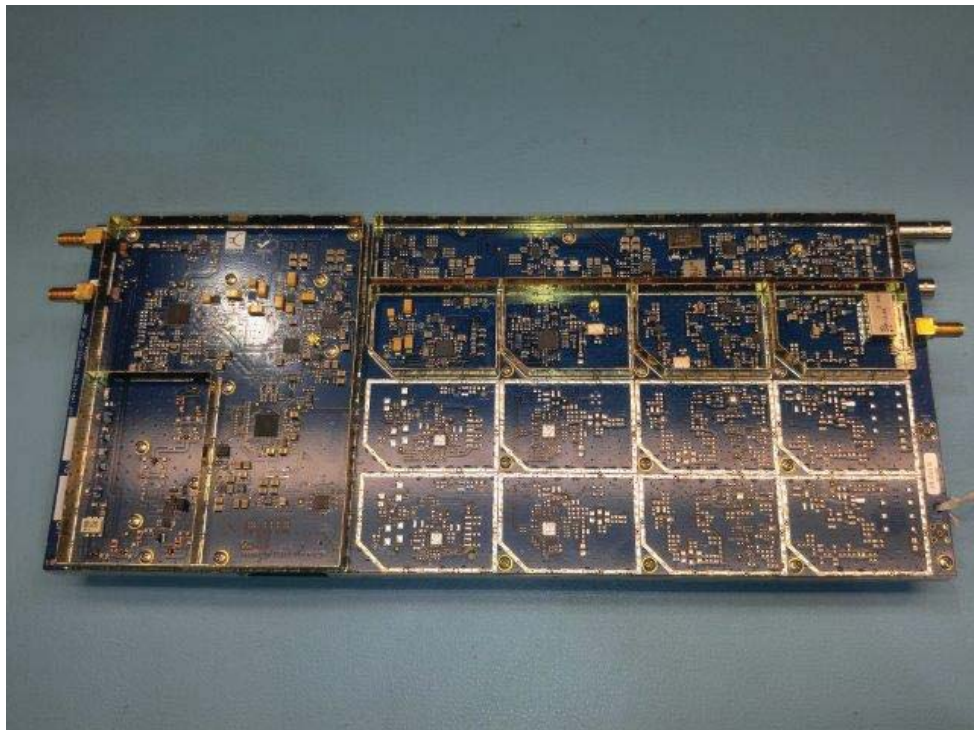


Internal Photos

Transceiver- Left Side (Shields on)



Transceiver- Left Side (Shields off)



Transceiver- Right Side (Note: shield is intergral and cannot be removed)



Transceiver- Front



Transceiver- Back



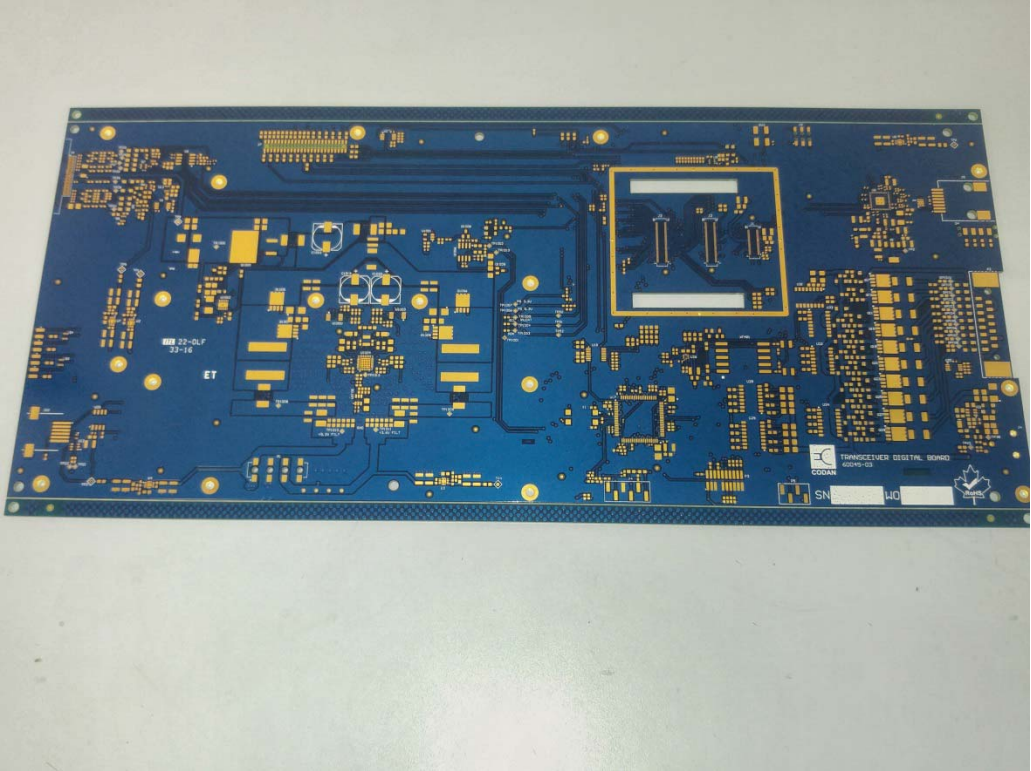
Transceiver- Top



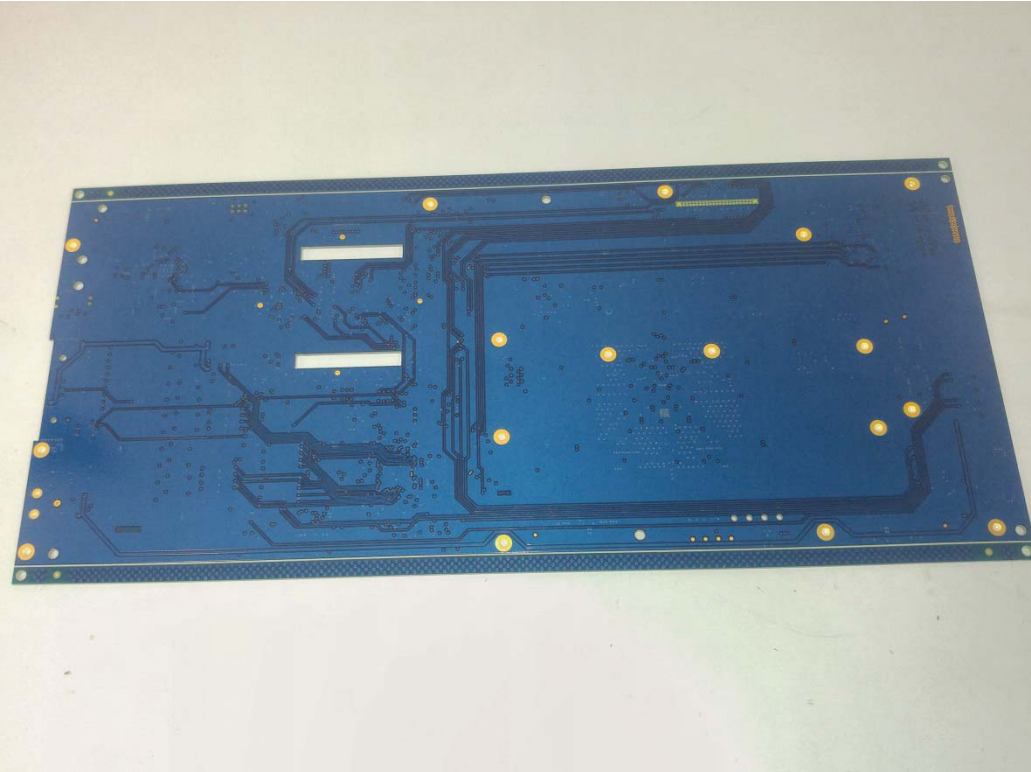
Transceiver- Bottom



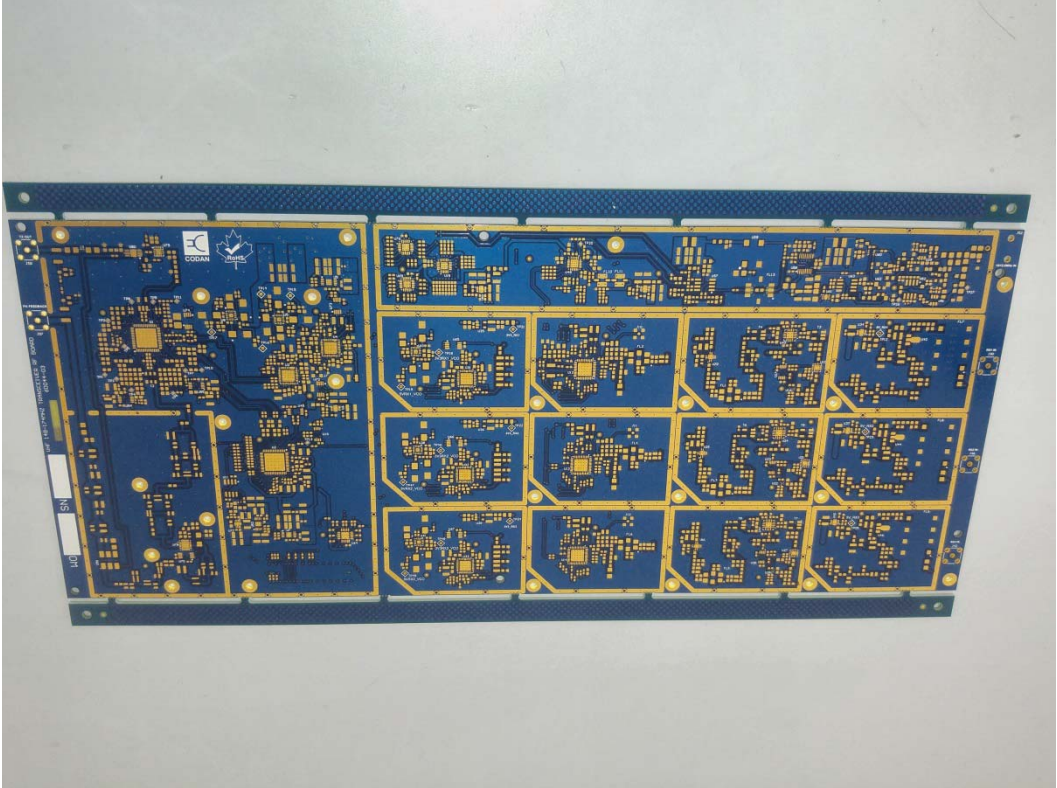
Transceiver – Digital PCB – Top



Transceiver – Digital PCB – Bottom



Transceiver – RF PCB – Top



Transceiver – RF PCB – Bottom

