

User's Manual

Model: R-RB5;C-UR37
Version : 0.3
Issue Date : DEC.21. 2004

Prepared By: Muchuan Lee

1.Feature

R-RB5;C-UR37 is a wireless product, It is very useful tool for presentation.R-RB5 is a receiver. Basically R-RB5 is a remote controller and we called it “Presenter”. This product operate at 2.4 GHz frequency.

End- user use this product can easy to control Microsoft PowerPoint software.

Receiver (C-UR37) is use USB(Universal Serial BUS) interface to connect with computer

R-RB5 is a remote controller to control Microsoft PowerPoint software.

It has 6 buttons to control Microsoft PowerPoint software.

These buttons are :

1. **Start/Stop** : Play and Stop
2. **Black Screen**: Disable the screen
3. **Backward**: Previous page
4. **Forward**: Next page
5. **Volume UP**: .To increase speaker volume.
6. **Volume Down**: To reduce speaker volume.

Below 6 buttons must operate at Microsoft Power point software.

- **Laser Button**:

When we press this button , the presenter will launch laser light , this light will help audience to understand presentation materials.

- **Stop/Watch Button**:

When we press this button , the presenter will set up LCD display ‘s timer, The timer will count sown automatically, if timer remain 5 & 3 & 1 & 0 minutes , presenter’s vibrator will vibrate to remind user.

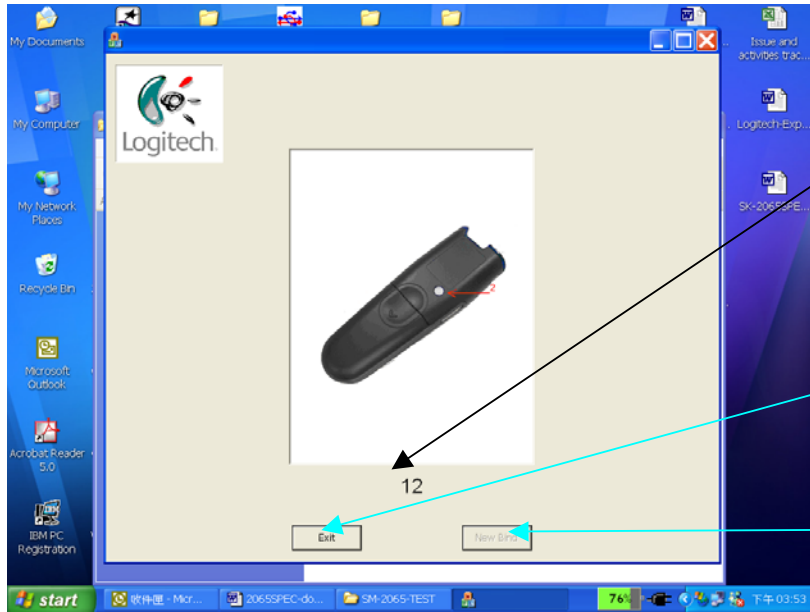
- **Reset Button**: The user need press this button to pair receiver(R-RB5), because presenter and Receiver must to pair successfully then they can work at the same frequency.

- **LCD display**: It will show the timer (number and indicate bar) and battery status icon.

2.Setup:

1. The user must put 2-AAA batteries into presenter.
2. Turn on On/Off switch.

3. Plug in Receiver into computer USB port.
4. Execute pairing software, it will attaché in product package.
5. Press Presenter's reset button then software will show succeed message.
6. Execute Microsoft PowerPoint software.



Binding timer(time out: 15)

Exit bind AP

Trigger button of

Pairing software's windows

3.Product Outline

*Product Outline:



4 Electrical Specification

4.1 Presenter Power Consumption

TX Operation Voltage:

Voltage supplied to presenter : 3 VDC (AAA battery *2)

TX Operation Current:

Presenter : Under 3 VDC power supplied ,typical current is 18mA.

Maximum current of Pairing : **150mA**

Typical power consumption of Presenter will be less than 40mW.

Laser Point current : 25~45 mA,

Laser output power : under 1mW (**Class II**)

4.2 Dongle Operating voltage

Voltage supplied to Receiver: 5 ± 0.25 VDC

Current consumption :Under nominal 5 VDC power supplied, typical current

Operating is 70 mA, **90 mA** Maximum .

5 Dongle Cabel

The Dongle don't need use shielding cable that just directly insert to PC host.

Federal Communication Commission Interference Statement

This equipment has been tested and found to comply with the limits for a Class B digital device, pursuant to Part 15 of the FCC Rules. These limits are designed to provide reasonable protection against harmful interference in a residential installation. This equipment generates, uses and can radiate radio frequency energy and, if not installed and used in accordance with the instructions, may cause harmful interference to radio communications. However, there is no guarantee that interference will not occur in a particular installation. If this equipment does cause harmful interference to radio or television reception, which can be determined by turning the equipment off and on, the user is encouraged to try to correct the interference by one of the following measures:

- Reorient or relocate the receiving antenna.
- Increase the separation between the equipment and receiver.
- Connect the equipment into an outlet on a circuit different from that to which the receiver is connected.
- Consult the dealer or an experienced radio/TV technician for help.

This device complies with Part 15 of the FCC Rules. Operation is subject to the following two conditions: (1) This device may not cause harmful interference, and (2) this device must accept any interference received, including interference that may cause undesired operation.

FCC Caution: Any changes or modifications not expressly approved by the party responsible for compliance could void the user's authority to operate this equipment.

IMPORTANT NOTE:

FCC Radiation Exposure Statement:

This equipment complies with FCC radiation exposure limits set forth for an uncontrolled environment. End users must follow the specific operating instructions for satisfying RF exposure compliance.

This transmitter must not be co-located or operating in conjunction with any other antenna or transmitter.

-----End of User's Manual-----