



BSD-500 Bluetooth[®] Presenter



Congratulations	4
Package Contents.....	4
Presenter Features	5
Inserting the battery	14
Switching the Presenter on or off.....	15
Pairing procedure.....	15
Using the (optional) BHD-200 Bluetooth dongle with your Computer.....	16
Using your BSD-500 Presenter with other Bluetooth devices.....	16
Skype Hotkey Setting.....	17
Skype Audio Device Setting	20
BSD-500 with IVT Bluesoleil	21
Discover Device	21
Enter Music Mode	24
Exit Music Mode	25
Enter Phone Mode (HSP).....	26
Exit Phone Mode	28
Enter Presentation Mode	29
Exit Presentation Mode.....	31
Enter Skype Mode	32

Exit Skype Mode	33
BSD-500 with Broadcom BTW.....	34
Discover Device	34
Enter Presentation Mode	37
Exit Presentation Mode.....	39
Enter Music Mode.....	40
Exit Music Mode	42
Enter Phone Mode (HSP).....	44
Exit Phone Mode	45
Enter Skype Mode for the First Time	46
Using the (Optional) External Speaker with your BSD-500.....	47
Phone call use	48
Making a call from the mobile phone.....	48
Voice dialing through the Presenter.....	48
Last number redial	48
Answering a call.....	48
Call swap	49
Ending a call	49
Rejecting a call (Supports HFP (Hands Free Profile) only)	49

Muting a call.....	49
Transferring a single call.....	49
Adjusting the volume	49
Controlling Music Playback (AV Mode).....	50
BSD-500 LED indications and button definitions	51
Bluetooth Presenter specifications.....	57
Cautions.....	57
Certification and safety approvals/general information.....	58
FCC Guidelines.....	59

Congratulations

Congratulations on your purchase of the BSD-500 Bluetooth Presenter. This Presenter allows you to communicate wirelessly through your mobile phone, computer or other Bluetooth devices, and includes a built-in microphone and stereo earphone socket. It uses Bluetooth 1.2 technology, but is also compatible with devices using Bluetooth version 1.1. Your BSD-500 Bluetooth Presenter uses an AAA battery, which is readily available and easy to change.

Package Contents

1. BSD-500 Bluetooth Presenter
2. Stereo earphones
3. Quickstart guide
4. This user guide
5. AAA battery

Optional:

5. BHD-2XX Bluetooth dongle (with software CD)
6. External speaker

Presenter Features



Power On/Off Mode



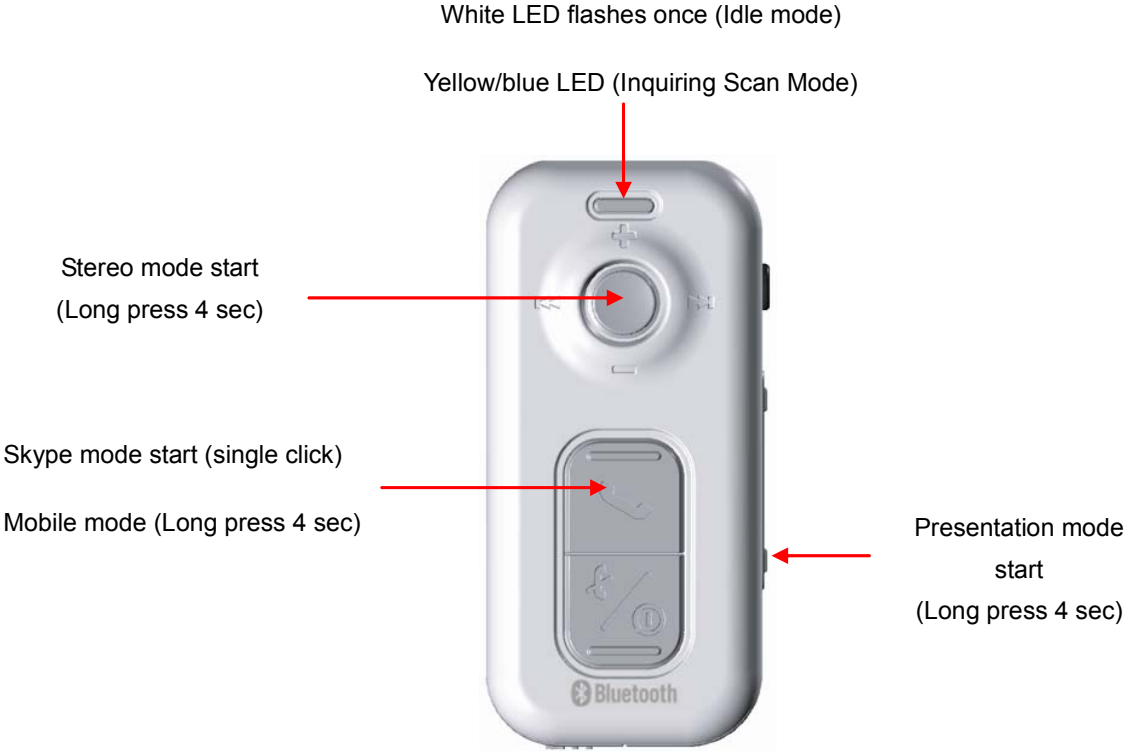
Power On/Inquiring Scan

(Long press for 2 sec)

Power Off

(Long press for 4 sec)

Enter Connection Mode



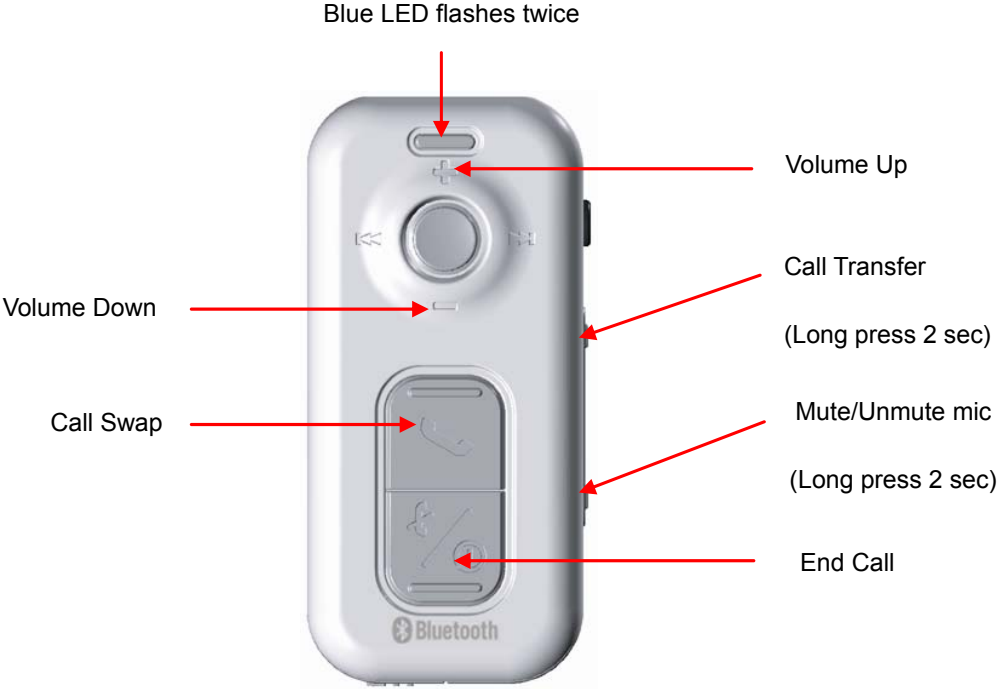
Music Mode



Phone Mode – Stand by



Phone Mode – HFP (Hands free profile) (During a Call)



Phone Mode – HSP (Headset profile) (During a Call)



Presentation Mode



Skype Mode

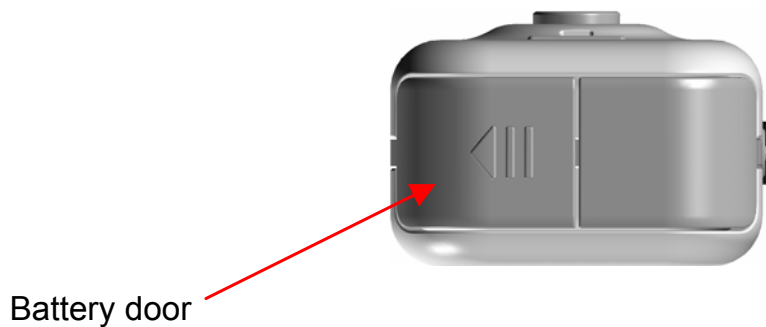
White/Blue LED flashes alternately once, then 3 sec off



Inserting the battery

Before using your BSD-500, please make sure you have inserted a suitable battery. The BSD-500 uses one AAA battery.

Bottom view



To insert the battery:

1. Slide the battery door away from the center (Follow the arrow on the battery door).
2. Hinge the battery door to an open position.
3. Insert the battery, making sure that the end marked “-“ goes in first (The “+” end will then be closest to the battery door).
4. Hinge the battery door to a closed position.
5. Slide the battery door back towards the center to secure.

Note: When the battery is running low, the LED will flash red. When this happens, please replace the battery.

Switching the Presenter on or off

To switch on:

Press and hold the **power on/off button** for approximately 2 seconds until the white LED lights.

To switch off:

Press and hold the **power on/off button** for approximately 4 seconds until the blue LED flashes quickly 5 times.

Pairing procedure

Your BSD-500 Bluetooth Presenter needs to be paired to another Bluetooth device (e.g. Mobile phone) before it can be used. This is a two part process; one part is carried out on the Presenter and the other is carried out on the other Bluetooth device. Note that different Bluetooth devices use a different method to go through the pairing process.

To pair your BSD-500 Bluetooth Presenter:

1. With your Presenter turned off, press and hold the **power on/off button** for approximately 2 seconds until the LED flashes quickly between blue and orange, which indicates that the Presenter is in discovery/pairing mode.
2. Use your other Bluetooth device's menu to search for the BSD-500. When it has been found, confirm that you want to pair it and your other Bluetooth device together. If you are unsure how to go through the pairing process on your other Bluetooth device, please consult its user manual.
3. When asked for a pin button, enter "0000".

Note: There is usually a time limit to pair devices, for example 1 minute.

Using the (optional) BHD-200 Bluetooth dongle with your Computer

The optional BHD-200 dongle can be used to enable Bluetooth communication between your computer and your BHD-500 Presenter. With this you can use many more functions available on your device. These can be seen in the table below: Please refer to the enclosed software CD for more information on installation, pairing and usage.

Mode	Profile
Presentation AV	HID (Human Interface Device) A2DP (Advanced Audio Distribution Profile), AVRCP (Audio/Video Remote Control Profile)
Phone Skype	HF (Hands-Free), HS (Headset) HS (Headset)

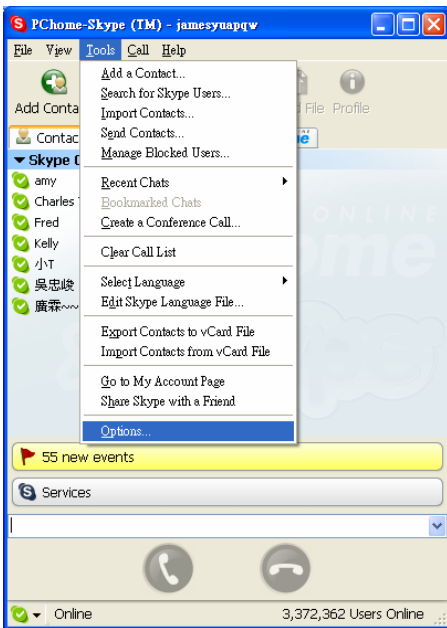
Using your BSD-500 Presenter with other Bluetooth devices

Please see the documentation of your other Bluetooth device to see how to pair it with your BSD-500 Presenter, as well as what functions are available.

Note: To use the various functions available on your BSD-500, your other Bluetooth device must support the appropriate profiles (see table above).

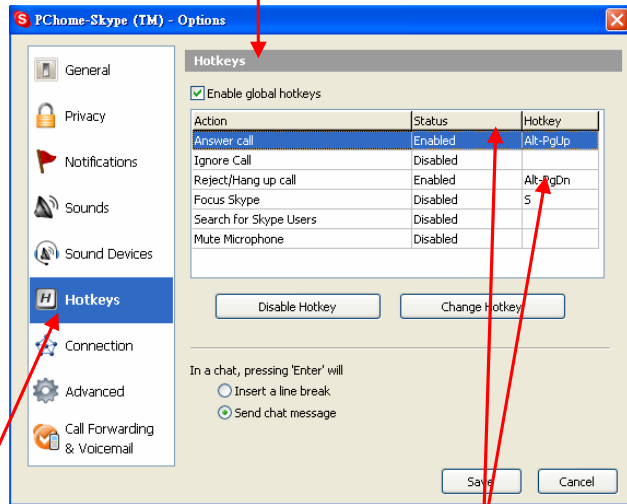
Skype Hotkey Setting

1. In Skype, choose Tools > Options



2. Select "Hotkeys"

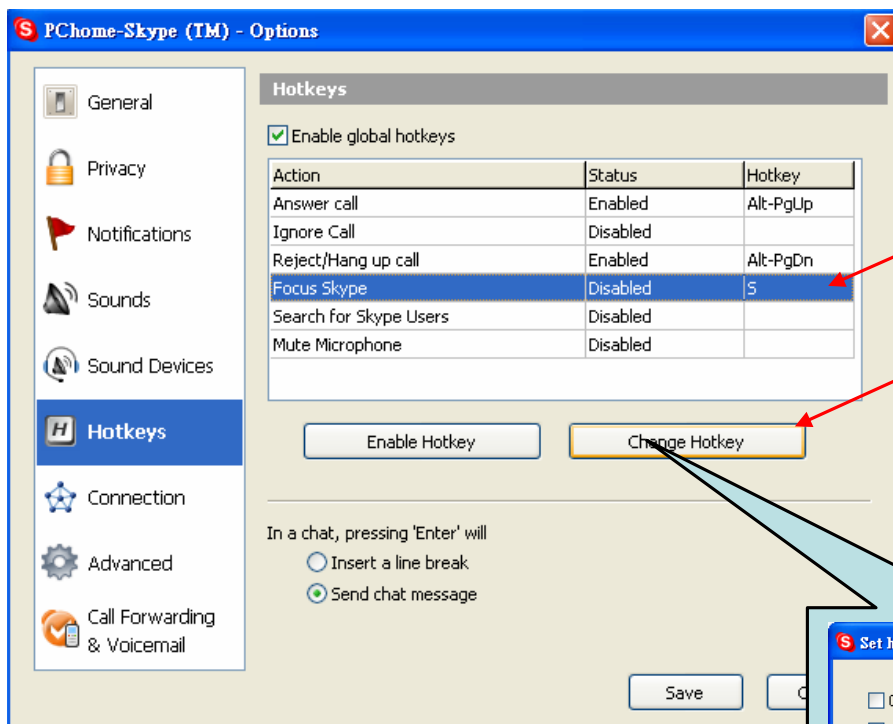
3. Check "Enable global hotkeys"



Use default setting

(Answer call: Enabled Alt-PgUp)

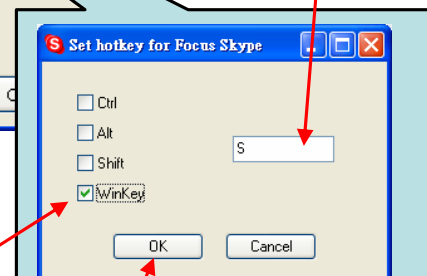
Reject/Hang up call: Enabled Alt-PgDn)



3. Select "Focus Skype"

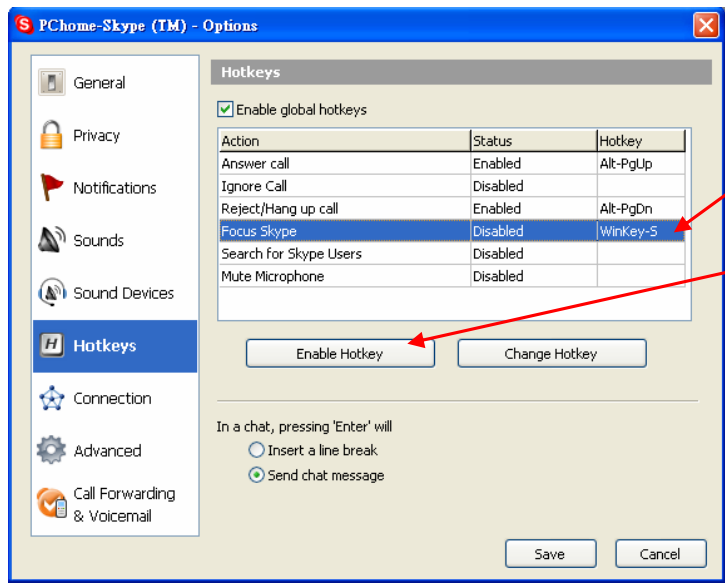
4. Click "Change Hotkey"

6. Key in "S"



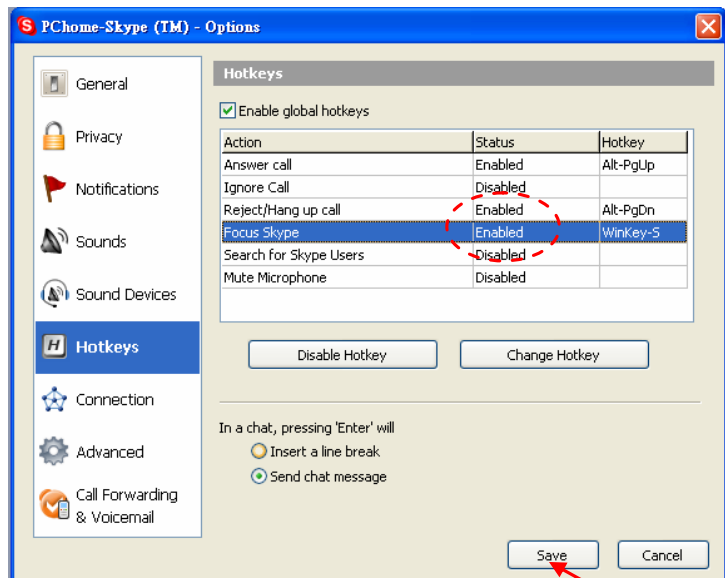
5. Check "Winkey"

7. Click "Ok"



8. Select "Focus Skype"

9. Click "Enable Hotkey"



10. Click "Save"

Skype Audio Device Setting

1. Select "Sound Devices"

2. Select "Bluetooth SCO Audio"

3. Check "Ring PC speaker"

4. Click "Save"

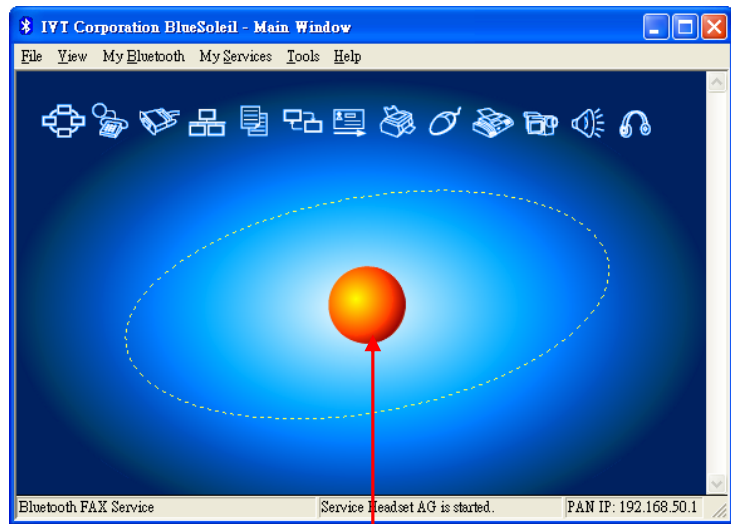
BSD-500 with IVT Bluesoleil

Discover Device

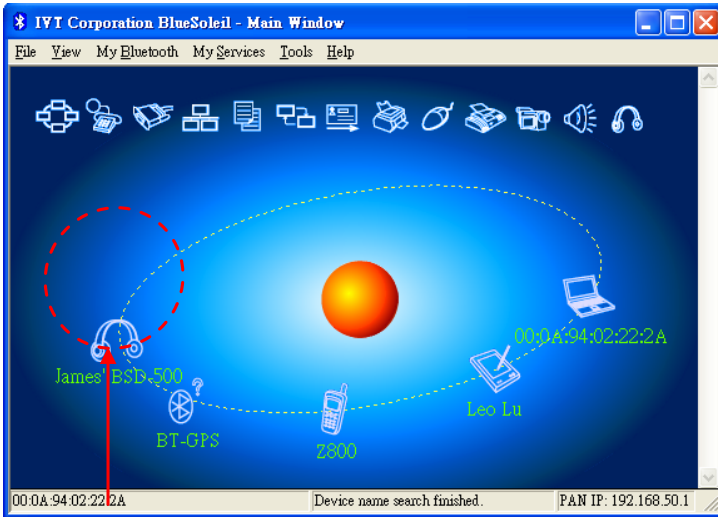
2. Yellow/Blue LED flashes alternately



1. Long press 4 sec in power off state

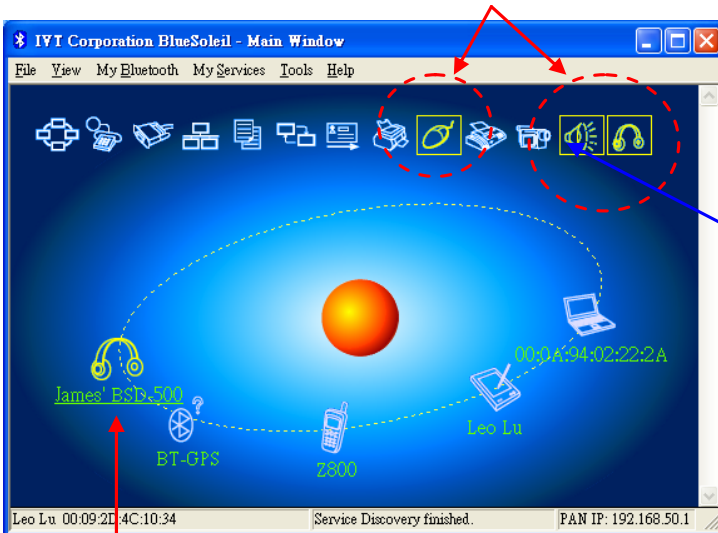


3. Click here to discover Bluetooth devices.



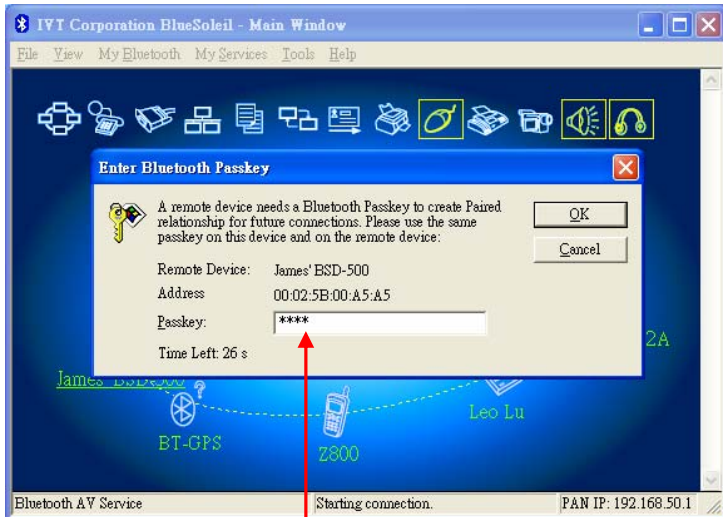
My device

2. Supported services of BSD-500



3. Click to connect service.

1. Double-click to get supported services.

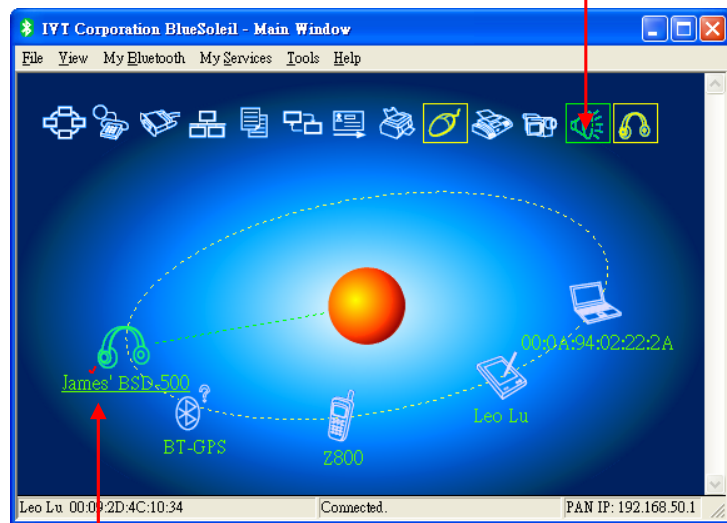


Key in "0000".

Enter Music Mode

1. Connection successful (changes to green)

2. Blue LED flashes once.



1. Connection successful (changes to green)

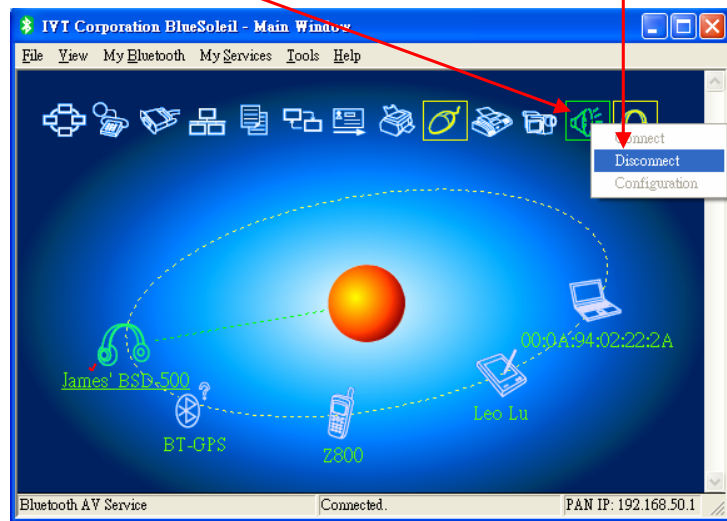
Exit Music Mode

3. White LED flashes once



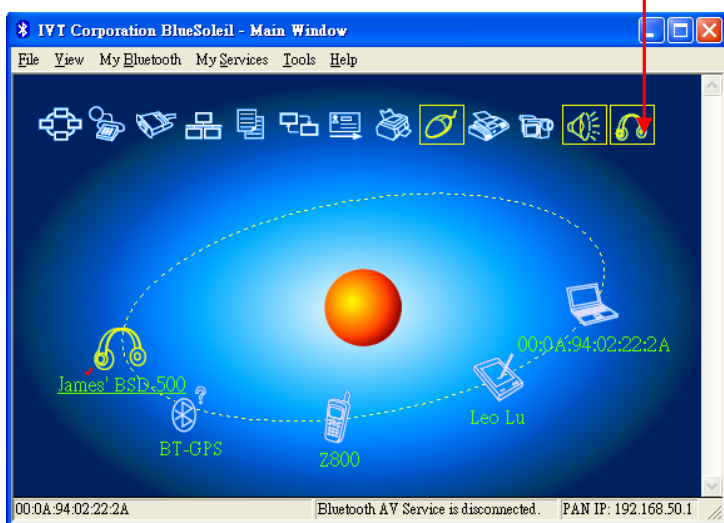
1. Right-click here to show connection item.

2. Choose "Disconnect" to disconnect AV.



Enter Phone Mode (HSP)

Click to connect service.

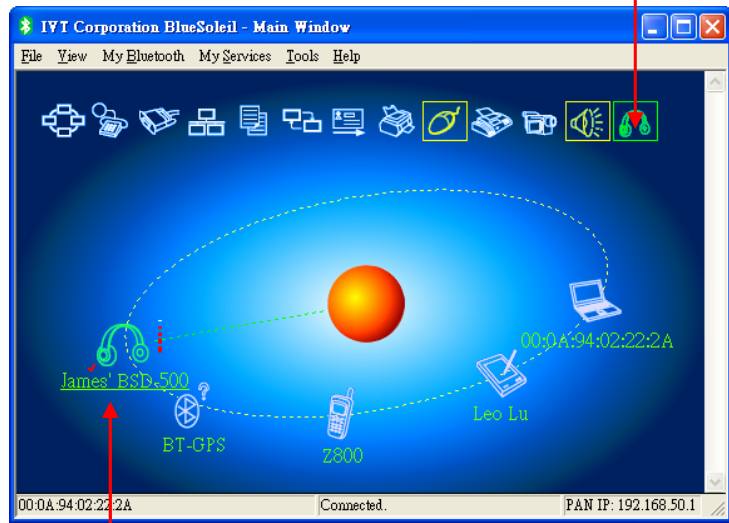


1. Blue LED flashes once.

6. Blue LED flashes twice.



5. Connection successful (changes to green)



5. Connection successful (changes to green)

2. Body vibrates.

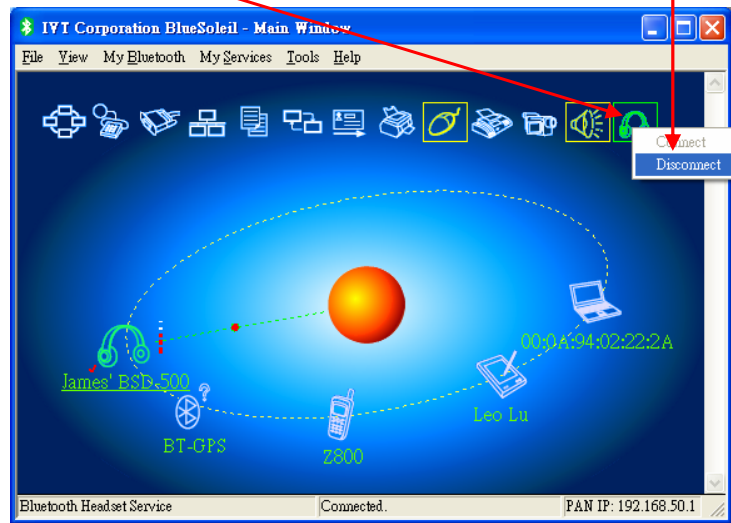
3. Ring tone is heard from plug-in headset.

4. Click button to make the connection.

Exit Phone Mode

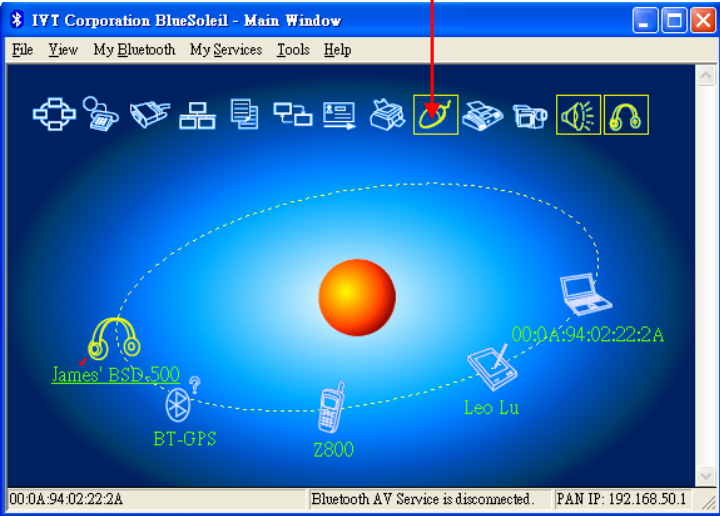
1. Right-click here to show connection item.

2. Choose "Disconnect" to disconnect HS.



Enter Presentation Mode

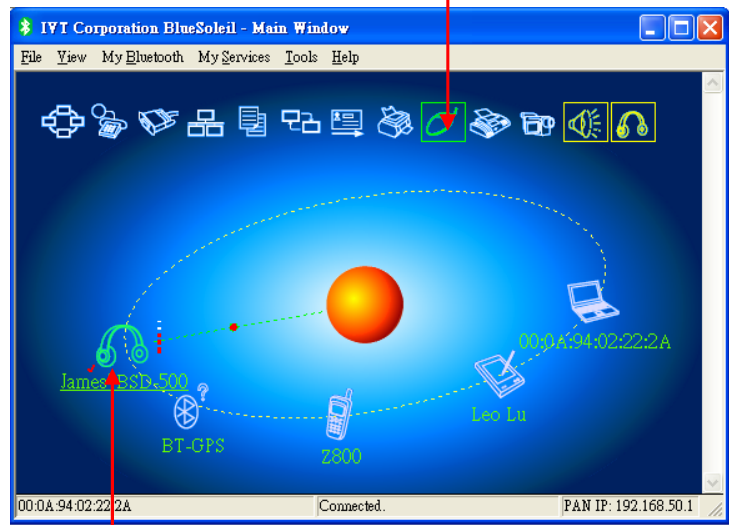
Click to connect service.



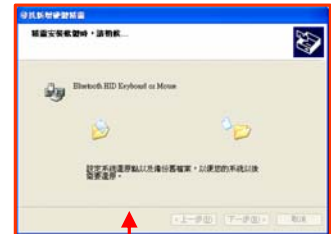
2. Yellow LED flashes once.



1. Connection successful (changes to green)



1. Connection successful (changes to green)



First time connection

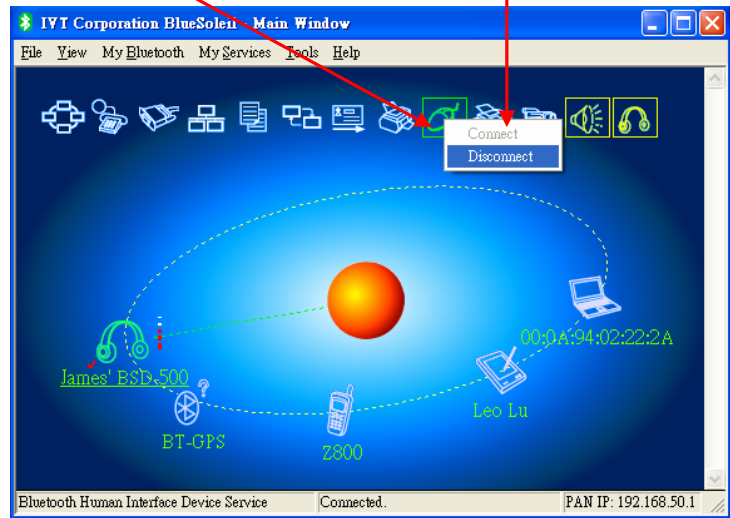
Exit Presentation Mode

3. White LED flashes once.



1. Right-click here to show connection item.

2. Choose "Disconnect" to disconnect HID.



Enter Skype Mode

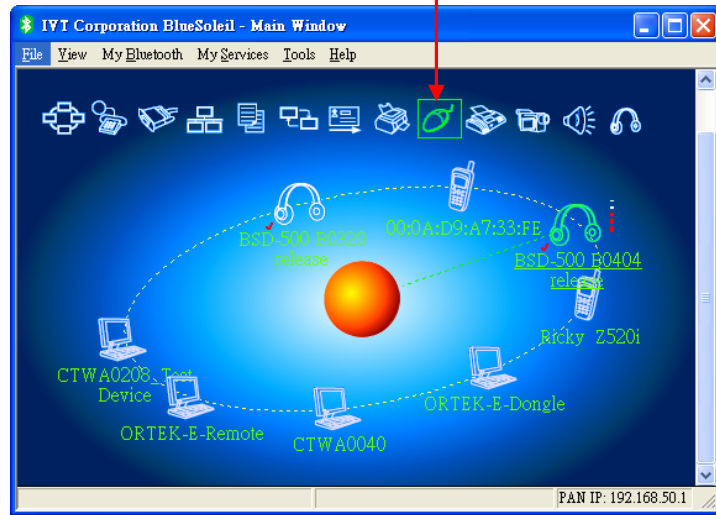
(HID service has to already be connected)

4. White/Blue LED flashes alternately.



1. Click button to accept call.

2. HID connected.



* Remote Device BSD-500 B0404 release(00:16:44:00:01:37) has connected to my Headset AG service!

3. HSP connected.

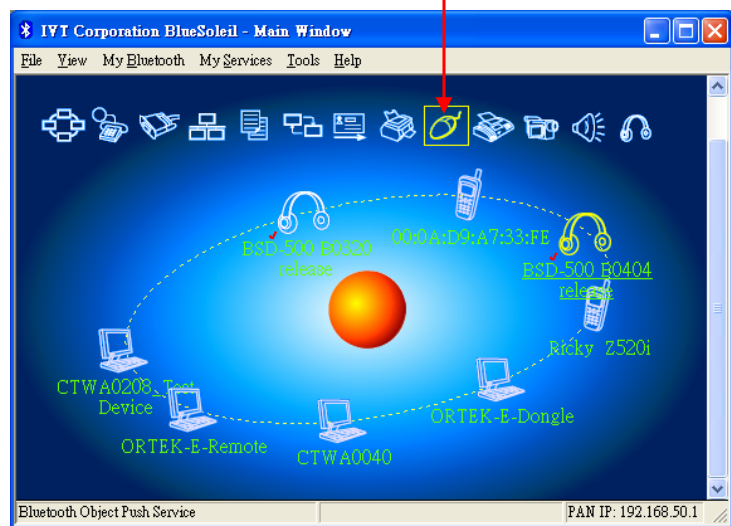
Exit Skype Mode

4. White LED flashes once.



1. Click button to hang up call.

2. HID disconnected.

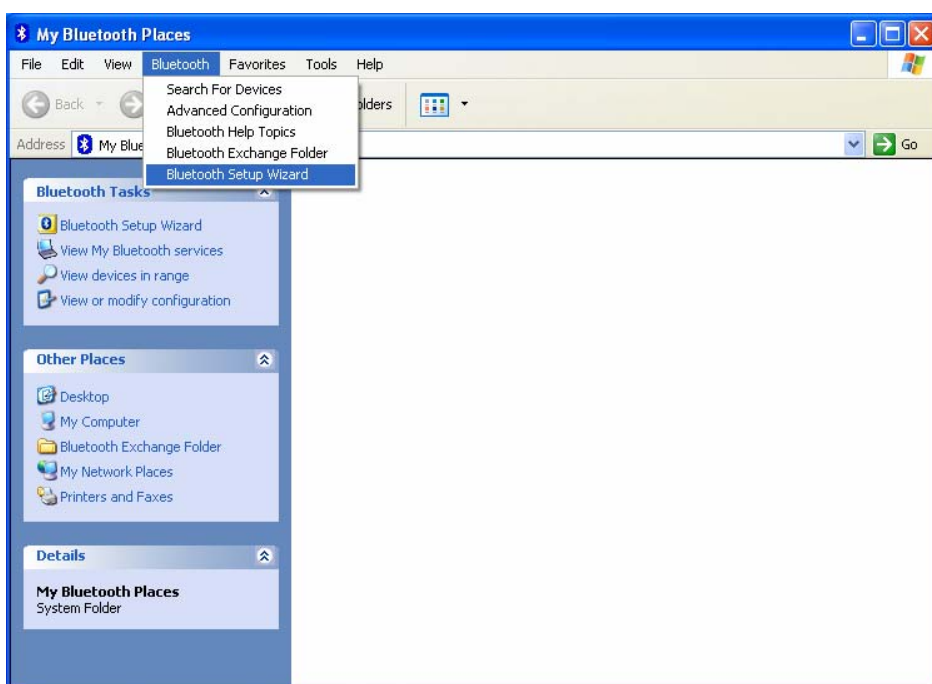


* Remote Device ESD-500 B0404 release(00:16:44:00:01:37) has disconnected from my Headset AG service!

3. HSP disconnected.

BSD-500 with Broadcom BTW

Discover Device

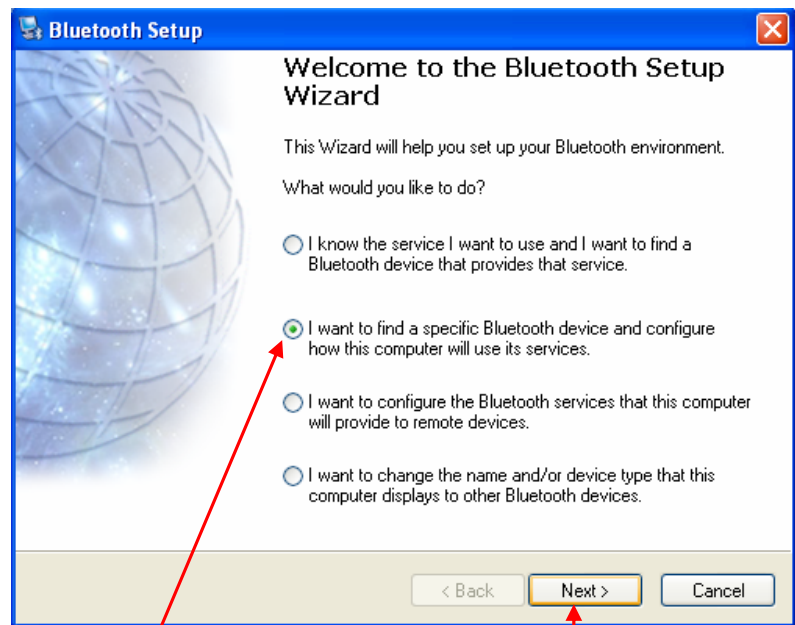


2. Yellow/Blue LED flashes alternately



1. Long press 2 sec in power

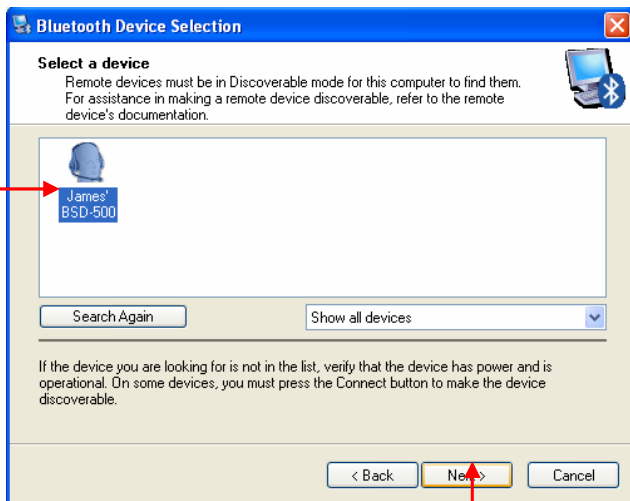
off state to turn on



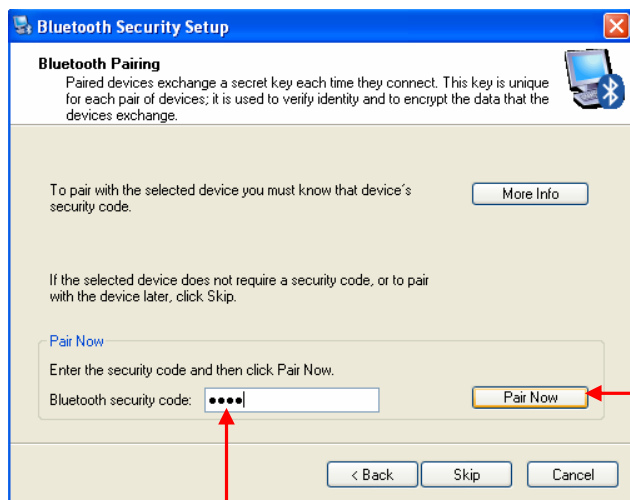
3. Select this item

4. Click "Next"

1. Select device



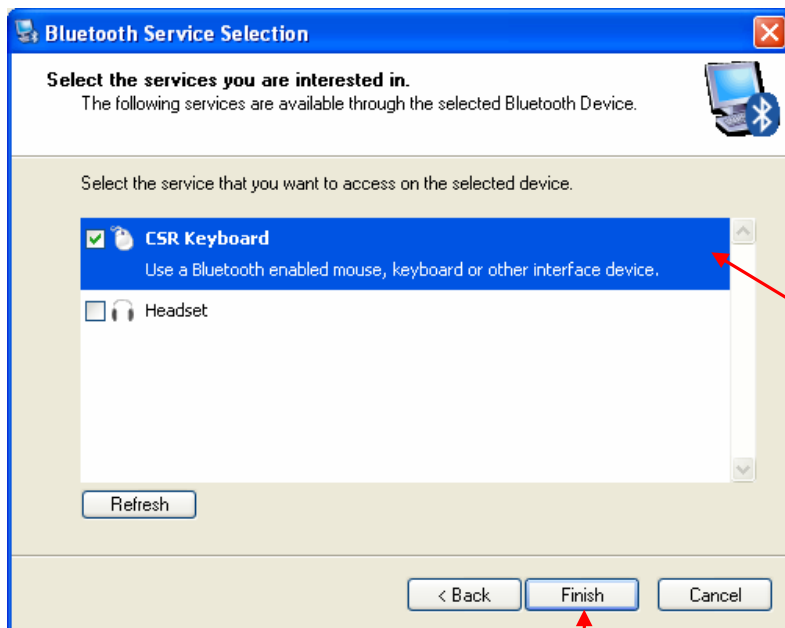
2. Click "Next"



1. Key in "0000"

2. Click "Pair Now"

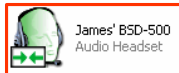
Enter Presentation Mode



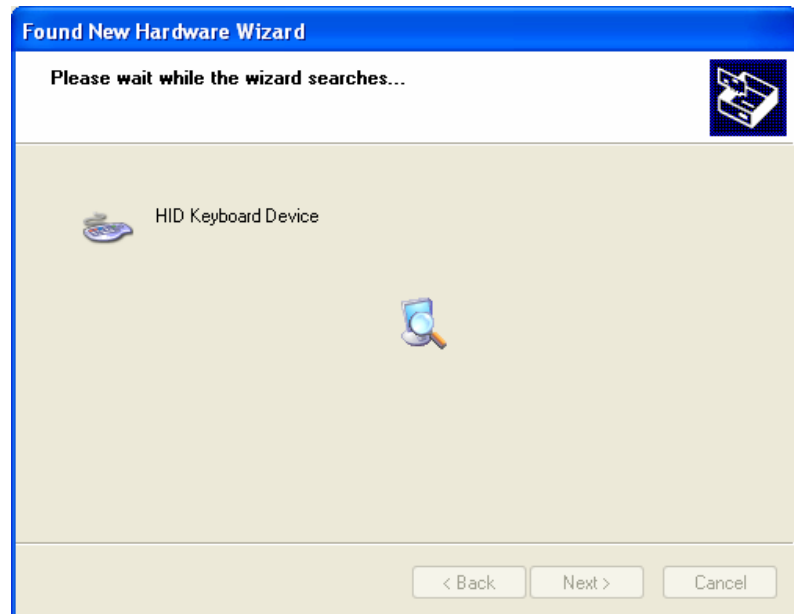
1. Check "CSR Keyboard"

2. Click "Finish"

4. Yellow LED flashes once.



5. Connected



3. First time connection

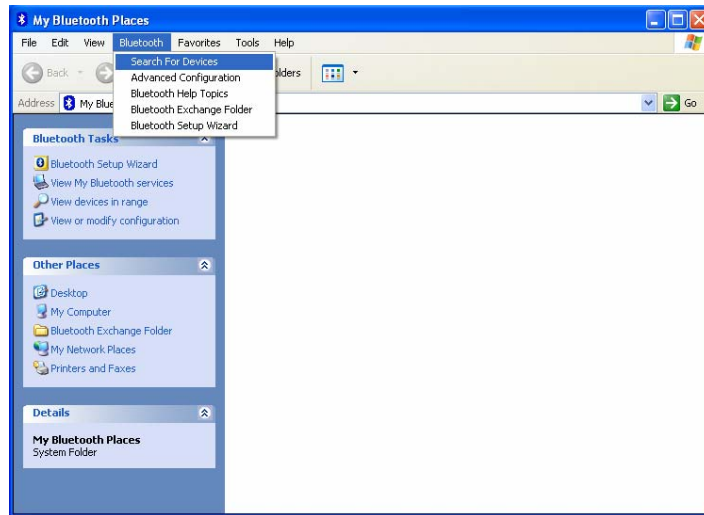
Exit Presentation Mode

2. White LED flashes once.



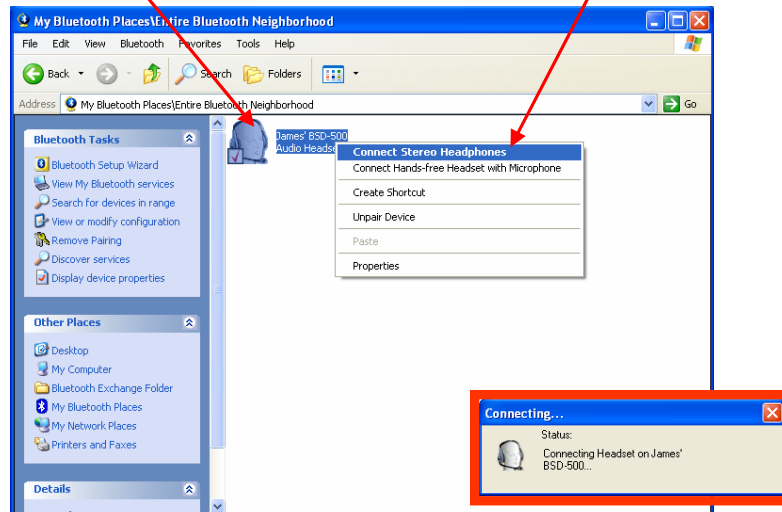
1. Long press this button 4 sec.

Enter Music Mode

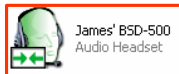


1. Right-click here

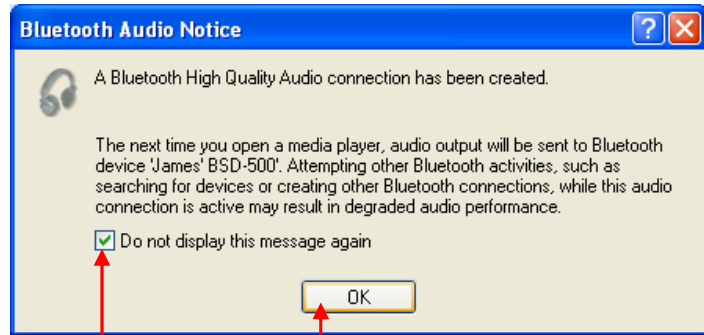
2. Select "Stereo headphones"



2. Blue LED flashes once.



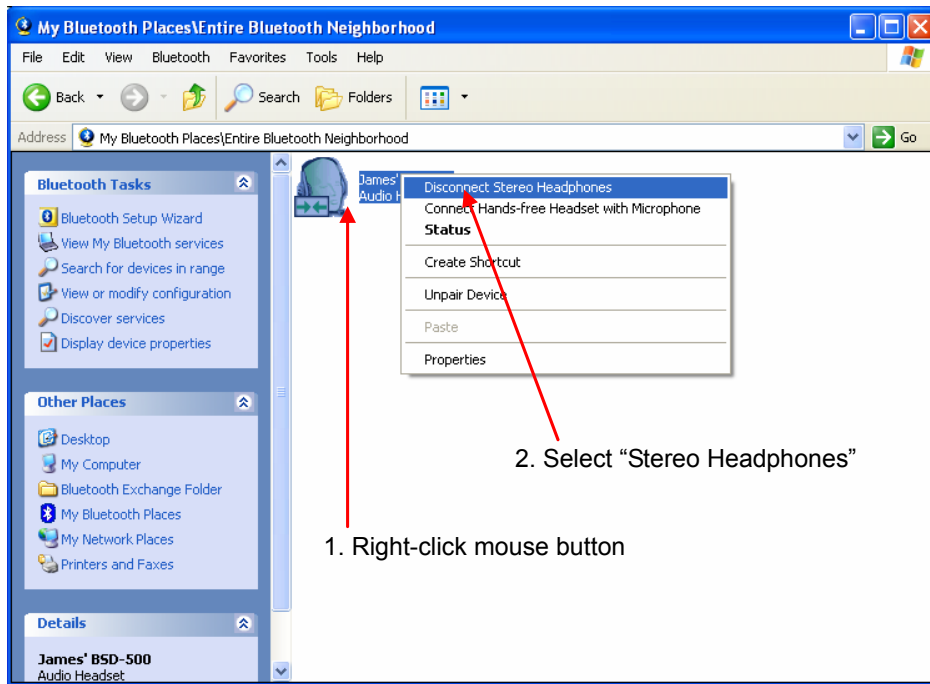
3. Connected



First time connection

1. Check this item, then click "Ok"

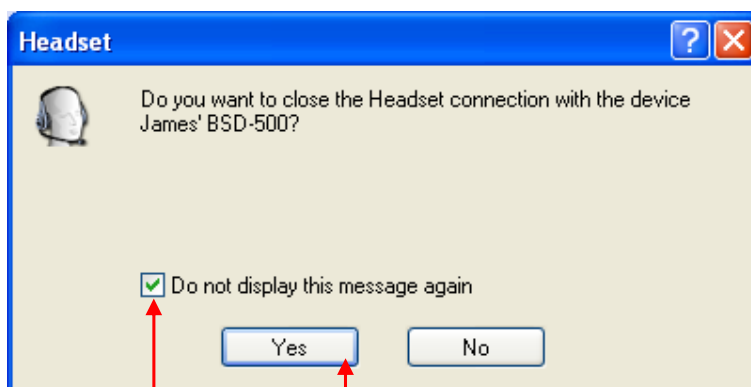
Exit Music Mode



2. White LED flashes.



3. Idle



First time disconnecting

1. Check this item, then click "Yes"

Enter Phone Mode (HSP)

5. Blue LED flashes once.

9. Blue LED flashes twice.



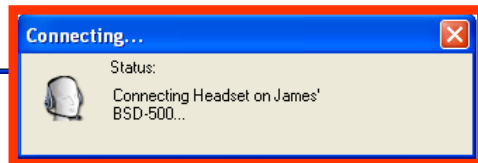
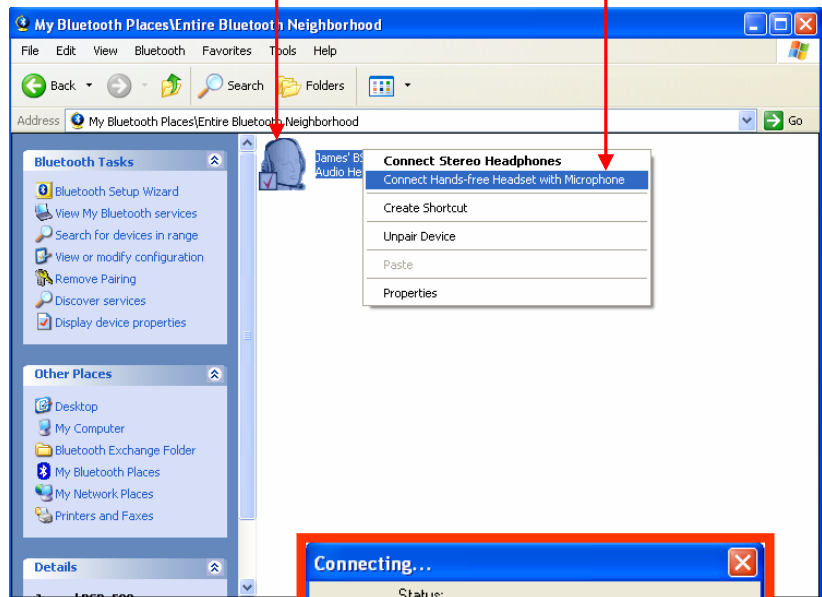
6. The body vibrates

7. Ring tone is heard from plug-in headset.

8. Click button to make connection.

1. Right-click mouse

2. Select "Hands-free"



3. Connecting



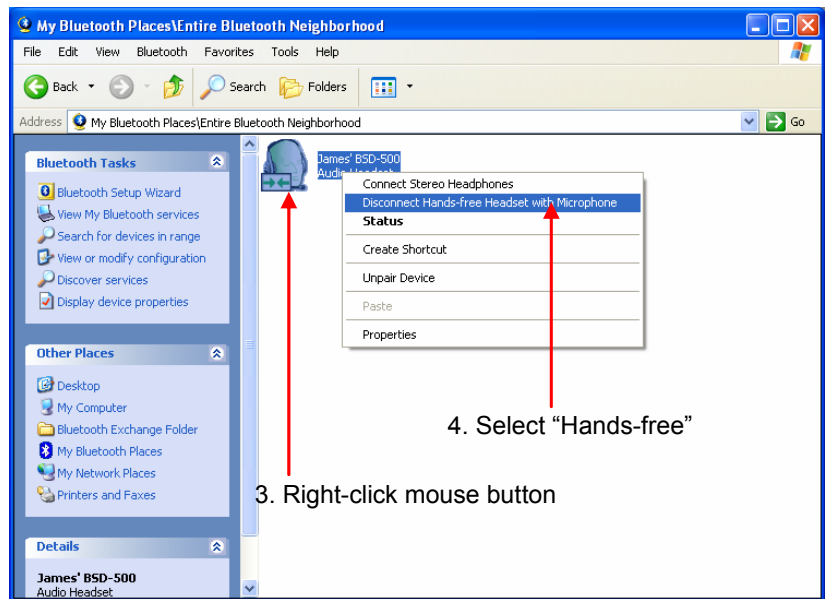
4. Connected

Exit Phone Mode

2. White LED flashes once.

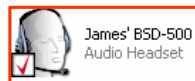


1. Click button to hang up call.



3. Right-click mouse button

4. Select "Hands-free"



3. Idle

Enter Skype Mode for the First Time

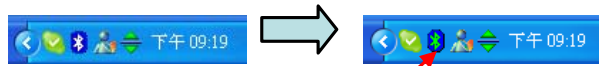
4. White/Blue LED flashes alternately.



1. Click button to accept call.



3. Check this item and click "Ok"



2. Double-click Bluetooth icon when icon changes to green.

Using the (Optional) External Speaker with your BSD-500

Using the (optional) external speaker, you can convert your BSD-500 into a speakerphone, or listen to music without wearing earphones.

To attach the external speaker:

1. Remove the earphones if they are plugged in.
2. Plug the external speaker into the earphone socket, making sure that the speaker faces forward.
3. Ensure that the plastic stabilizer locates into the laser pointer indent.



Phone call use

Making a call from the mobile phone

While your mobile phone is paired with your Presenter, you can use the mobile phone to make phone calls in the same way as normal. The only difference will be that the earphone and microphone functions of the Presenter will be used instead of the phone's.

Voice dialing through the Presenter

In order to use the voice dial feature of your Presenter, your phone must support voice dialing and must have voice tags stored.

To use voice dialing:

1. Switch the Presenter on and pair it with your phone, if this is not already the case.
2. Press the **talk button** twice
3. Follow the instructions for voice dialing on your particular mobile phone.
4. Your phone will make the call.

Last number redial

When the Presenter is in standby mode (not in conversation), press the **End button** twice, and your phone will redial the last number that you called.

Note: This function only works on Bluetooth phones that support the Hands-free profile

Answering a call

When someone calls you, a ring tone will sound in your Presenter. To answer the call, press the **talk button**.

Note: You can set your mobile phone to automatically answer calls, meaning that you do not even need to press the **talk button**. Please refer to your mobile phone's user guide for more information about this setting.

Call swap

Some mobile phones support call swap. This means that if you receive a second call, you can put the first caller on hold while you speak to the second caller. If your phone supports this feature:

1. Press and hold the **talk button** for two seconds to put the first caller on hold and answer the second call
2. When the second call has ended, the first caller will automatically be taken off hold.

Note: Please press the **page up button** if the first caller will not be taken off hold.

Ending a call

During a call, press the **end call button** to hang up. If the other person hangs up first, then the call will end automatically.

Rejecting a call (Supports HFP (Hands Free Profile) only)

If you do not wish to accept a call, press the **end call button** to reject it.

Note: To use this function, your mobile phone must support the Hands-free profile.

Muting a call

During a conversation, press and hold the **page down button** for 2 seconds. The microphone will mute. To cancel mute, press the **page down button** once.

Transferring a single call

When activating a call, you can press and hold the **page up button** for 2 seconds to switch conversation between the BSD-500 Presenter and the mobile phone.

Adjusting the volume

The Presenter offers 6 pre-set volume levels.

- To increase the volume, press the **up directional key**.
- To decrease the volume, press the **down directional key**.

Controlling Music Playback (AV Mode)

If your other Bluetooth device is compatible with this feature, you can control music playback from the Presenter itself. Please see the documentation of your other Bluetooth device to see how to pair it with your BSD-500 Presenter, as well as what functions are available.

In AV mode, the following keys can be used:

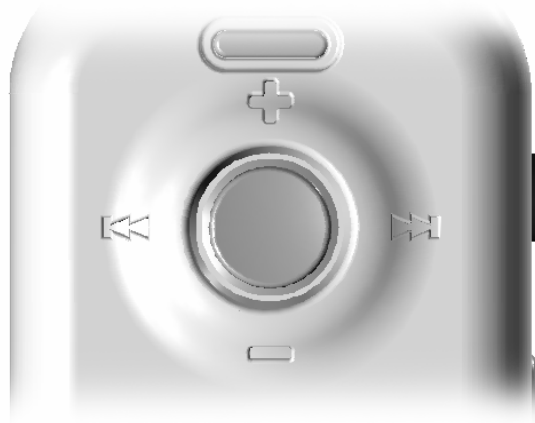
Enter key – plays or pauses track

Right directional key – skips forward one track at a time

Left directional key – skips back one track at a time

Up directional key – increases volume

Down directional key – decreases volume



Note 1: Your other Bluetooth device must support this profile.

Note 2: Make sure the volume on your music player is not at zero, as the BSD-500 can only increase or decrease the volume relative to this.

BSD-500 LED indications and button definitions

Mobile Phone Mode

	Trigger Function	Trigger Button	Trigger time	LED flashing
Off	Inquiry Scan	End	Long press 2 sec	Yellow and blue LED ON/ OFF once and OFF 3sec If there is no connection, power off automatically after 5 mins.
Inquiry Scan	Power off	End	Long press 4 sec	White LED ON/OFF 5 times.
	Connect	Talk	Long press 4 sec	Blue LED solid ON 1sec and then Blue LED ON 1 time/ OFF 3 sec
Idle	Power off	End	Long press 4 sec	White LED ON/OFF 5 times.
	Connect	Talk	Long press 4 sec	Blue LED solid ON 1sec and then Blue LED ON 1 time/ OFF 3 sec
Connected	Voice dial	Talk	Double click	Blue LED ON 2 times/ OFF 3 sec (Dialing successfully)
	Last number	End	Double click	Blue LED ON 2 times/ OFF 3 sec

	redial			(Dialing successfully)
	Disconnect	Talk	Long press 4 sec	Blue LED solid ON 1sec and then return to idle mode
Incoming Call	Accept call	Talk	Single Click	Blue LED ON 2 times/ OFF 3 sec
	Reject call (HFP supported)	End	Single Click	Blue LED ON 1 time/ OFF 3 sec
Outgoing Call	End call	End	Single Click	Blue LED ON 1 time/ OFF 3 sec
Call Active	Mute/Unmute for 1 second Vibration	Page down	Long press 2 sec	Blue LED ON 2 times/ OFF 3 sec
	Call Swap	Talk	Single Click	Blue LED ON 2 times/ OFF 3 sec
	Call Transfer	Page up	Long press 2 sec	Blue LED ON 2 times/ OFF 3 sec
	Volume up	↑	Single Click	Blue LED ON 2 times/ OFF 3 sec
	Volume down	↓	Single Click	Blue LED ON 2 times/ OFF 3 sec
	End call	End	Single Click	Blue LED ON 1 time/ OFF 3 sec

Presentation Mode

	Trigger Function	Trigger Button	Trigger time	LED flashing
Off	Inquiry Scan	End	Long press 2 sec	Yellow and blue LED ON/ OFF once and OFF 3sec If there is no connection, power off automatically after 5 mins.
Inquiry Scan	Power off	End	Long press 4 sec	White LED ON/OFF 5 times.
	Connect	Page down	Long press 4 sec	Yellow LED solid ON 1sec and then Yellow LED ON 1 time/ OFF 3 sec
Idle	Power off	End	Long press 4 sec	White LED ON/OFF 5 times.
	Connect	Page down	Long press 4 sec	Yellow LED solid ON 1sec and then Yellow LED ON 1 time/ OFF 3 sec
Connected	Page up	Page up	Single click	Yellow LED ON 1 time/ OFF 3 sec
	Page down	Page down	Single click	Yellow LED ON 1 time/ OFF 3 sec

	Disconnect	Page down	Long press 4 sec	Yellow LED solid ON 1sec and then return to idle mode
--	------------	-----------	------------------	---

Skype Mode

	Trigger Function	Trigger Button	Trigger time	LED flashing
Off	Inquiry Scan	End	Long press 2 sec	Yellow and blue LED ON/ OFF once and OFF 3sec If there is no connection,power off automatically after 5 mins.
Inquiry Scan	Power off	End	Long press 4 sec	White LED ON/OFF 5 times.
	Connect	Talk	Single click	White and Blue LED ON/OFF 1 time /OFF 3 sec
Idle	Power off	End	Long press 4 sec	White LED ON/OFF 5 times.
	Connect	Talk	Single click	White and Blue LED ON/OFF 1 time /OFF 3 sec
Call Active	Mute/Unmute for 1 second Vibration	Page down	Long press 2 sec	White and Blue LED ON/OFF 1 time /OFF 3 sec
	Volume up	↑	Single Click	White and Blue LED ON/OFF 1 time /OFF 3 sec
	Volume down	↓	Single Click	White and Blue LED ON/OFF 1 time /OFF 3 sec
	End call	End	Single Click	Return to idle mode

Stereo & Mobile Phone Mode. Assume Phone Mode already connected

	Trigger Function	Trigger Button	Trigger time	LED flashing
Off	Inquiry Scan	End	Long press 2 sec	Yellow and blue LED ON/ OFF once and OFF 3sec If there is no connection, power off automatically after 5 mins.
Inquiry Scan	Power off	End	Long press 4 sec	White LED ON/OFF 5 times.
	Connect (Stereo)	Enter	Long press 4 sec	Blue LED solid ON 1sec and then Blue LED ON 1 time/ OFF 3 sec
Connected	Pause/Resume	Enter	Single Click	Blue LED ON 1 time/ OFF 3 sec
	Forward	→	Single Click	Blue LED ON 1 time/ OFF 3 sec
	Rewind	←	Single Click	Blue LED ON 1 time/ OFF 3 sec
	Volume up	↑	Single Click	Blue LED ON 1 time/ OFF 3 sec
	Volume down	↓	Single Click	Blue LED ON 1 time/ OFF 3 sec
	Voice dial	Talk	Double click	Blue LED ON 2 times/ OFF 3 sec
	Last number	End	Double click	Blue LED ON 2 times/ OFF 3 sec

	redial			
	Disconnect (Stereo)	Enter	Long press 4 sec	Blue LED ON 1 time/ OFF 3 sec
Incoming Call	Accept call	Talk	Single Click	Blue LED ON 2 times/ OFF 3 sec
	Reject call (HFP supported)	End	Single Click	Blue LED ON 1 time/ OFF 3 sec
Outgoing Call	End call	End	Single Click	Blue LED ON 1 time/ OFF 3 sec
Call Active	Mute/UnMute for 1 second Vibration	Page down	Long press 2 sec	Blue LED ON 2 times/ OFF 3 sec
	Call Swap	Talk	Single Click	Blue LED ON 2 times/ OFF 3 sec
	Call Transfer	Page up	Long press 2 sec	Blue LED ON 2 times/ OFF 3 sec
	Volume up	↑	Single Click	Blue LED ON 2 times/ OFF 3 sec
	Volume down	↓	Single Click	Blue LED ON 2 times/ OFF 3 sec
	End call	End	Single Click	Blue LED ON 1 time/ OFF 3 sec

Bluetooth Presenter specifications

Compatible with Bluetooth Ver.1.1 or 1.2 devices	
Maximum distance	30 Feet (10 meters)
Dimensions	64x30x18mm
Weight of Presenter	Approximately 35 grams (excluding battery)
Typical standby time	up to 200 hours
Typical talk time	up to 5.5 hours
Battery type	AAA

Cautions

1. Always store the Presenter safely.
2. Avoid storage at temperatures below -20°C or above 70°C. (*Storage at high or low temperatures can degrade performance and reduce battery life.*)
3. Avoid operating at temperatures below -10°C or above 50°C.
4. Do not expose the Presenter or any of its supplied parts to rain or other liquids.
5. Avoid humidity below 10% RH or above 95% RH.
6. Never aim the laser pointer at anyone's eyes, or at moving vehicles, including airplanes, as this could cause damage and/or lead to prosecution.

Certification and safety approvals/general information

This product is CE, FCC, BQB marked. Please note that this product uses radio frequency bands not available for use within some areas of the EU. This product is intended to be used in Austria, Belgium, Denmark, Finland, France, Germany, Greece, Ireland, Italy, Luxembourg, The Netherlands, Portugal, Spain, Sweden, United Kingdom and within EFTA in Iceland, Norway and Switzerland.

Users are not permitted to make changes or modify the device in any way. Changes or modifications not expressly approved by your distributor will void the users' authority to operate the equipment.

Bluetooth is a registered trademark owned by Bluetooth SIG, Inc.

Important information on safe and efficient operation. Read this information before using your phone. Users are not permitted to make changes or modify the device in any way. Changes or modifications not expressly approved by the party responsible for compliance could void the user's authority to operate the equipment.

This device complies with Part 15 of the FCC Rules. Operation is subject to the following two conditions:

(1) This device may not cause harmful interference. (2) This device must accept any interference received, including interference that may cause undesired operation.

15.105 Federal Communications Commission (FCC) Requirements, Part 15

This equipment has been tested and found to comply with the limits for a class B digital device, pursuant to part 15 of the FCC Rules. These limits are designed to provide reasonable protection against harmful interference in a residential installation. This equipment generates, uses and can radiate radio frequency energy and, if not installed and used in accordance with the instructions, may cause harmful interference to radio communications. However, there is no guarantee that interference will not occur in a particular installation. If this equipment does cause harmful interference to radio or television reception, which can be determined by turning the equipment off and on, the user is encouraged to try to correct the interference by one or more of the following measures: ---Reorient or relocate the receiving antenna. ---Increase the separation between the equipment and receiver. ---Connect the equipment into an outlet on a circuit different from that to which the receiver is connected. ---Consult the dealer or an experienced radio/TV technician for help. Any changes or modifications (including the antennas) made to this device that are not expressly approved by the manufacturer may void the user's authority to operate the equipment. FCC RF Radiation Exposure Statement: This equipment complies with FCC RF radiation exposure limits set forth for an uncontrolled environment. This device and its antenna must not be co-located or operating in conjunction with any other antenna or transmitter.