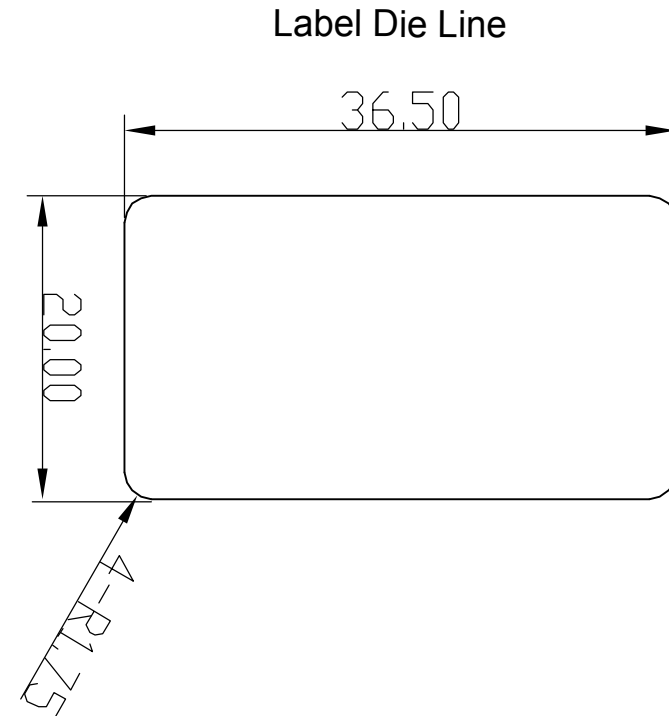
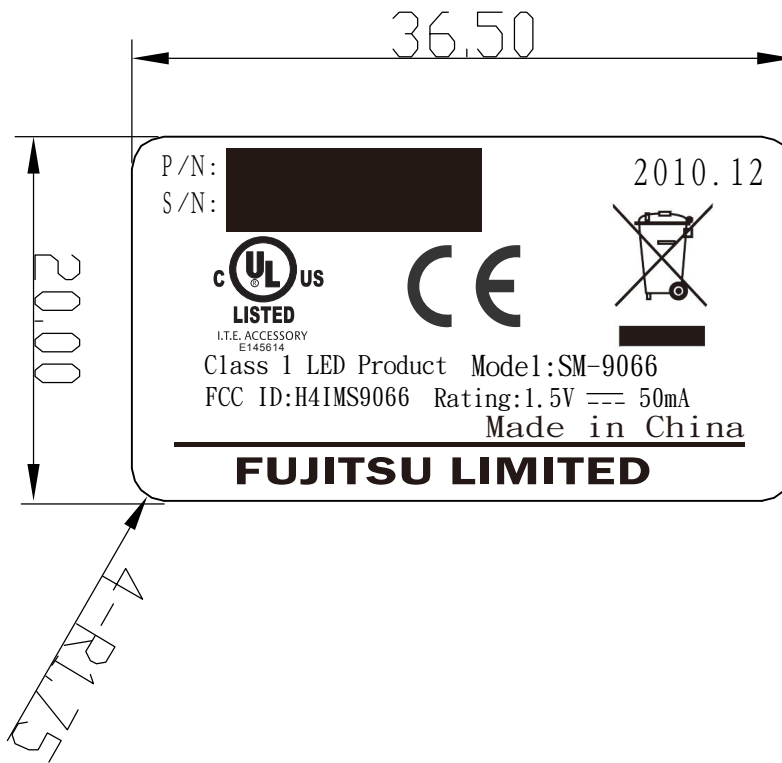


MARK

ISSUE

DATE

REVER



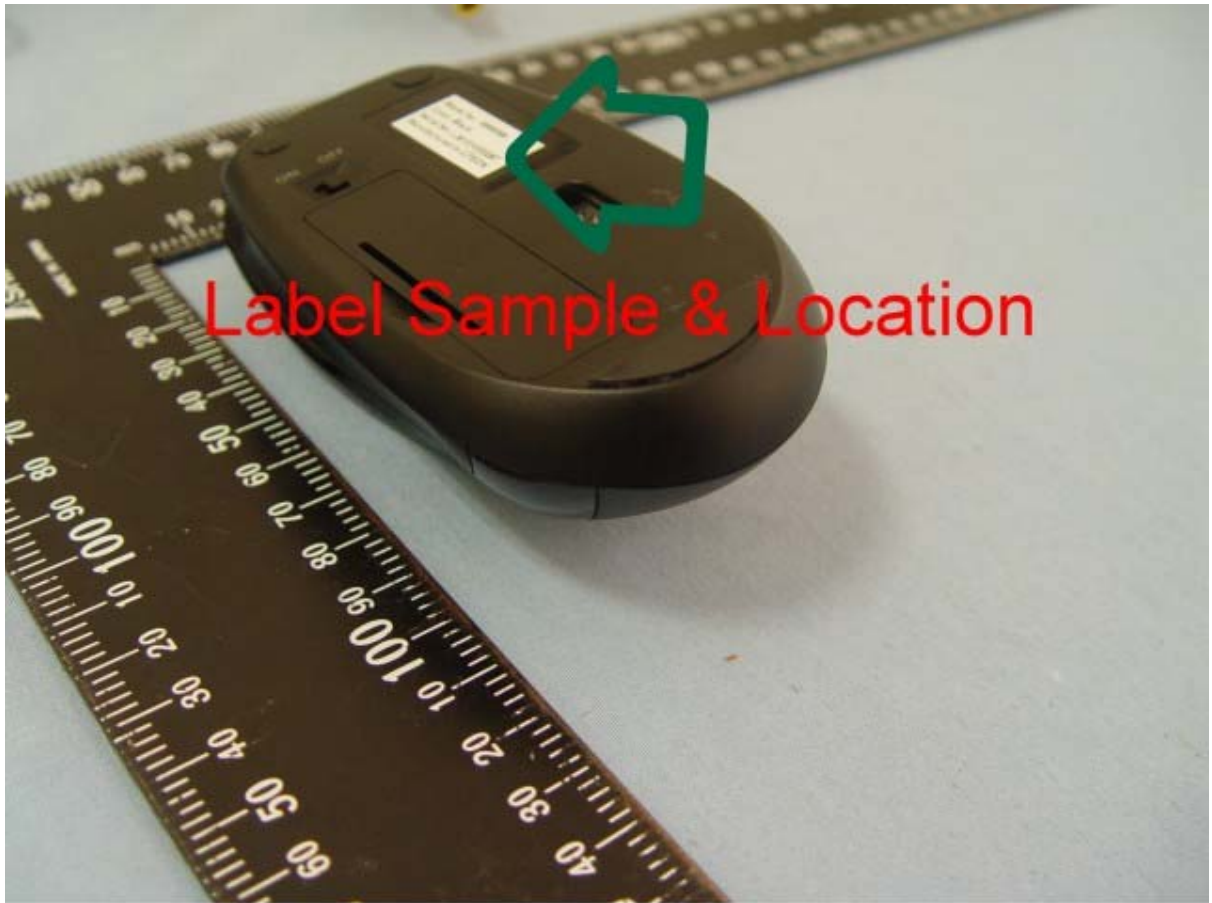
Note :

1. Printing Color Spec :

| | |
|---|---------|
| label Text color | BLACK C |
| Label background color and PID area color | WHITE |
| PID and barcode color | BLACK C |

- 2. Material : Art paper +PP with 0.02Mil AP103 Adhesive.
- 3. This material must comply with UL's recognized component program for making and labeling systems.
- 4. This part must comply with the latest version "HS-301" of Liteon .

| | | | |
|----------------|---|------------------------------|----------------------------|
| SCALE: Free | TOLERANCE : UNSPECIFIED .XXX ± 0.05 .XX ± 0.1 .X ± 0.15 ° ± 0.25 ANGLE ± 0.5° | | Silitek Corporation |
| UNIT: mm | | | |
| DRAWN: | | TITLE: SM9066 FCC Label | |
| DESIGER: | | SHEET 1 OF 1 | |
| CHECKED: | | DRAWING NO: 836-00264-01A | |
| APPROVED: | | | |



Label Sample & Location