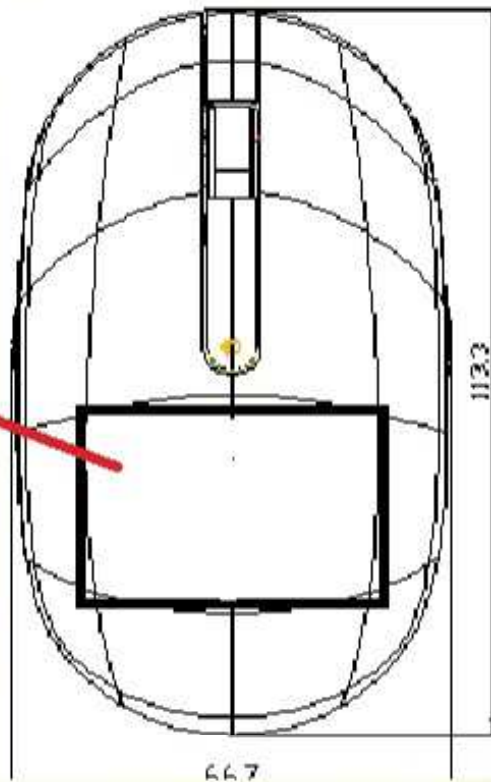
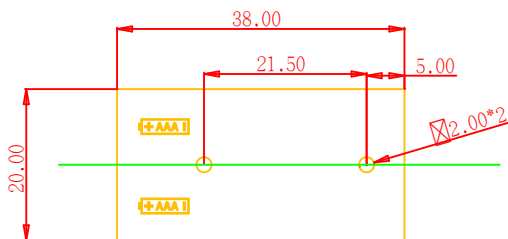


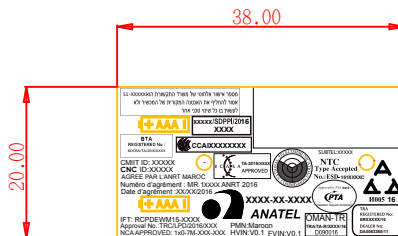
In the Battery room



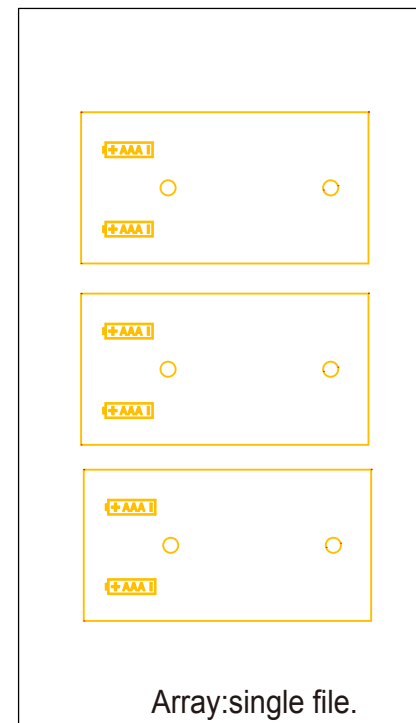
MARK	ISSUE	DATE	VER.	DCN NO.
------	-------	------	------	---------



battery label



battery label

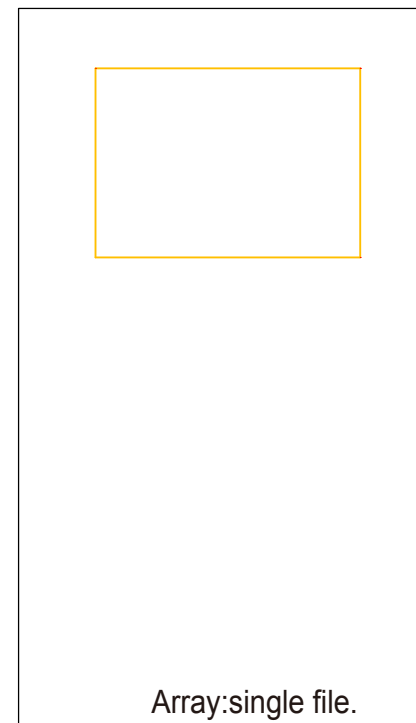
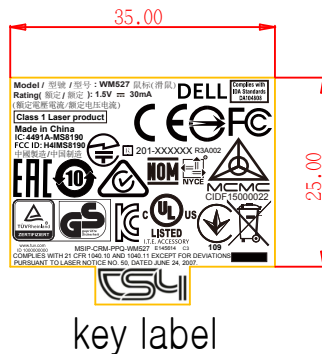
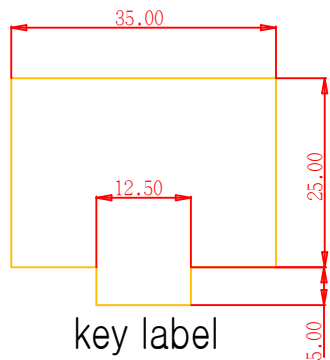


Note:


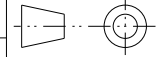
- 1.Material is:PP(合成紙)
- 2.Background color: black
- 3.Lettering color: white
- 4.The part is according to the latest version HS-301 of LITEON.
- 5.Unit:mm
- 6.Tolerance:+/-0.2mm
- 7.The adhesive force:3.5kgf min(90度拉拔測試規格)or 1.2kgf min(180度剝離測試規格)
8. Rolling style: the letter is positive when pick up the label.
- 9.Array:single file.

PART NO	DESCRIPTION	Q'TY	MAT'L	COLOR	REMARK
SCALE: 1:1	TOLERANCE UNSPECIFIED: .XXX ±0.05 .XX ±0.10 .X ±0.15 ±0.25 ANGLE ±0.5°	SILITEK ELECTRONICS(DONGGUAN)CO.,LTD DONGGUAN LITE-ON COMPUTER CO., LTD.			
UNIT: mm					
DRAWN:		TITLE: FCC Label SM 8190			
DESIGNER:	PAGE: 1 of 1				
CHECKED:	DRAWING NO.:	836-XXXXX-00A			
APPROVED:					

MARK	ISSUE	DATE	VER.	DCN NO.
------	-------	------	------	---------



- Note:
- 1.Material is:PP(合成紙)
 - 2.Background color: black
 - 3.Lettering color: white
 - 4.The part is according to the latest version HS-301 of LITEON.
 - 5.Unit:mm
 - 6.Tolerance:±/0.2mm
 - 7.The adhesive force:3.5kgf min(90度拉拔測試規格)or 1.2kgf min(180度剝離測試規格)
 8. Rolling style: the letter is positive when pick up the label.
 - 9.Array:single file.

PART NO	DESCRIPTION	Q'TY	MAT'L	COLOR	REMARK
SCALE: 1:1	TOLERANCE UNSPECIFIED: .XXX ±0.05 .XX ±0.10 .X ±0.15 ±0.25 ANGLE ±0.5°	 © SILITEK ELECTRONICS(DONGGUAN)CO.,LTD DONGGUAN LITE-ON COMPUTER CO., LTD.			
UNIT: mm					
DRAWN:		TITLE: SM 8190 FCC Key Label			
DESIGNER:	PAGE: 1 of 1				
CHECKED:	DRAWING NO.:	836-XXXXX-00A			
APPROVED:					