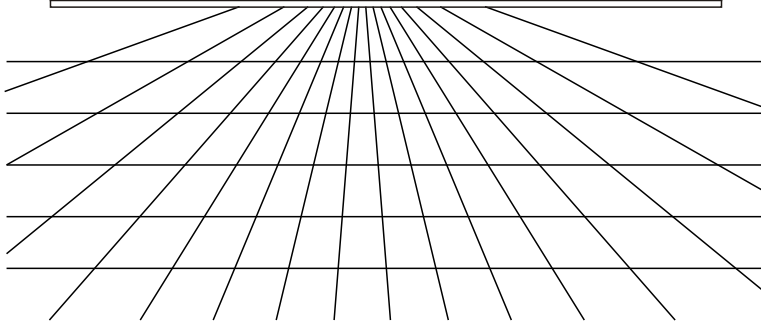
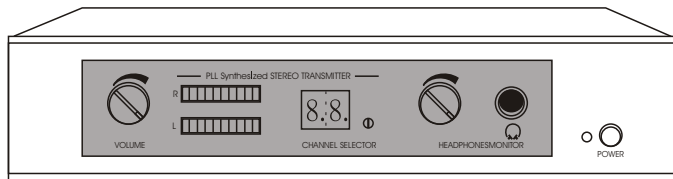


PERSONAL IN EAR MONITOR SYSTEM

INSTRUCTION MANUAL



CONTENTS

CHARACTER	1
SPECIFICATIONS	1
NAMES OF PARTS	2
INSTALLATION	3
POWER SUPPLY CONNECTION	4
CONTROLS AND CONNECTIONS	5
NOTE	6

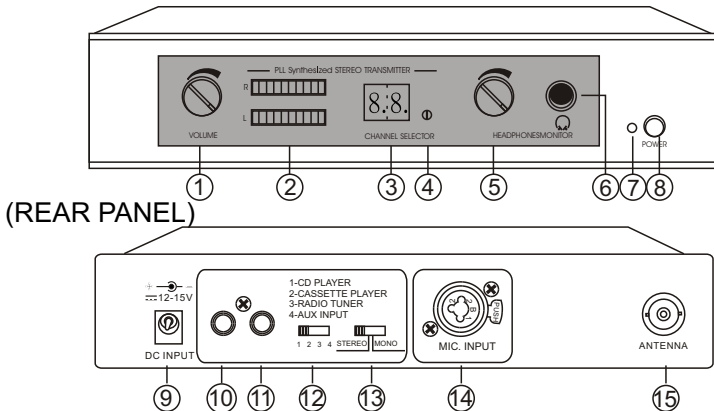
Thank you for your kind using our wireless system. Before using the machine please read the instruction manual very carefully. According to our instruction manual for ensure you using of the best function and performance. If any defect please contact with our agent or dealer. It is our pleasure to serve you.

Thank you for your cooperation

SPECIFICATIONS:

Frequency range	750~865MHz
Frequency stability	$\pm 100\text{ppm}(-10^\circ\text{C})$
Antenna output	BNC socket $50\ \Omega$
RF output power	Max 2.33mW
AF frequency response	50-15KHz
Modulation	Stereo FM working on the "pilot tone" principle
Spurious emission	$> 55\text{dBc}(\text{Type})$
Power supply extend DC	12-15V 500mA AC / DC Adaptor
Headphone output	$1/4(6.3\text{mm})\ \varphi$ stereo jack
Load impekance of headphone output	$\geq 16\ \Omega$
AF inputs	XLR / 6.3mm φ ,RCA line
THD at 1KHz	$\leq 1\%$
Dimensions	210(W) \times 232(D) \times 44(H)mm 8.27" \times 9.13" \times 1.73"
Weight	1.35Kg(298lb)

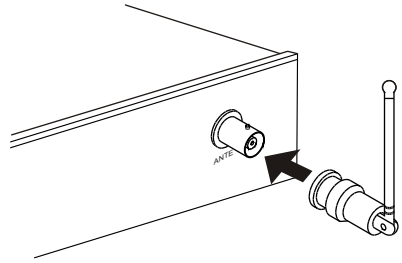
NAMES OF PARTS (FRONT PANEL)



- | | |
|--------------------------------------|---------------------------|
| 1. Volume control. | 8. Power switch. |
| 2. AF-LEVEL display. | 9. DC input socket. |
| 3. Channel display. | 10. Line input (left) . |
| 4. Channel selector control. | 11. Line input (right). |
| 5. Headphone monitor volume control. | 12. Input mode. |
| 6. Headphone monitor. | 13. Stereo / mono control |
| 7. Power on indicator. | 14. Mic input. |
| | 15. Antenna. |

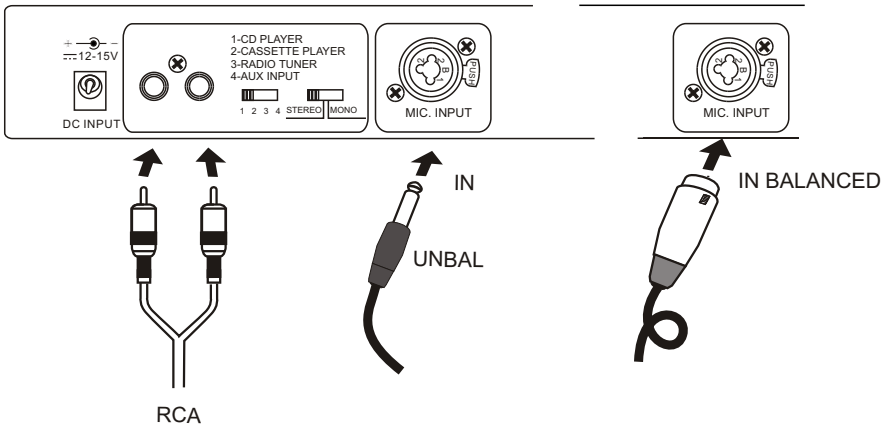
INSTRUCTION MANUAL

INSTALL ANTENNA



Audio Input Connector

You can connect a 1/4 inch phone plug or balance phone plug or RCA line input. Input mode and stereo / mono control.

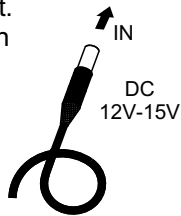
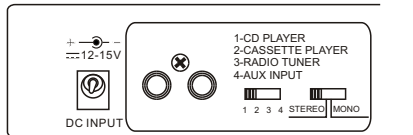


INSTRUCTION MANUAL

POWER SUPPLY CONNECTION

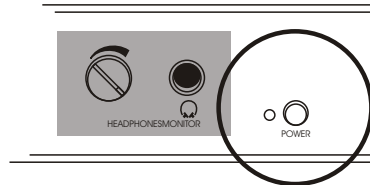
Use dc power supply could switch with adaptor supply or batter of 12V-15V.

Connection DC supply , DC plug connection with "DC INPUT" socket. Another plug terminal connection with battery or power supply.



POWER SWITCH

Make sure the correct current voltage. Push this power switch once to turn on; push it again to turn the power off. If unit still fails to operate, Secure a qualified technician or contact us for a Return Authorization prior toshiptment.



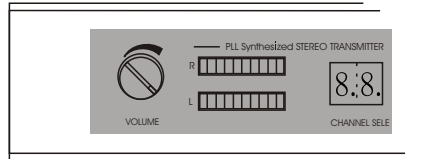
*Disconnect power supply before removing receiver cover.

INSTRUCTION MANUAL

CONTROLS AND CONNECTIONS

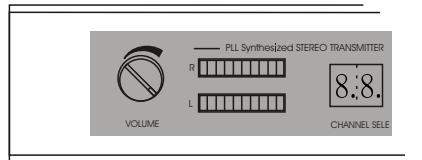
VOLUME ADJUSTOR

The purpose of this control is to give the ability to provide an audio output level from the wireless system that is similar to that of a wired microphone.



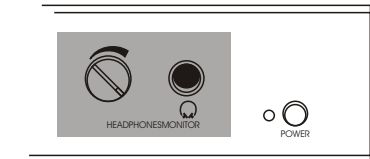
DISPLAY

AF-LEVEL Display : The AF level is displayed by an LED meter A which indicates the strength of the audio signal received.

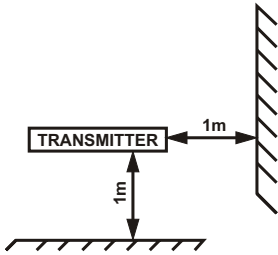


Monitoring the sound signal, headphone connection

Please use headphones with a 1/4 (6.3mm φ) stereo jack plug.



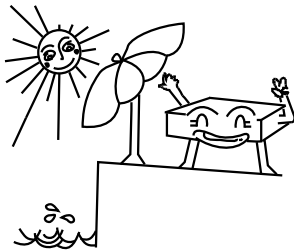
NOTE



THE WIRELESS TRANSMITTER LOCATED AT GOOD CONDITION PLACE.



BE CAREFUL, DON'T DROP OFF THE WIRELESS TRANSMITTER TO FLOOR



KEEP AWAY RAINING OR SUN SHINE.



IF YOU ARE NOT TECHNICAL ENGINEER PLS. DO NOT MODIFIED OR KNOCK - DOWN IT.

LICENSING REQUIREMENTS

This equipment complies with Part 74 of the FCC Rules.

A license is required for operation subjective device will be issued only to the following:

- (1) A licensed of an AM, FM, TV, or international broadcast station or low power TV station. Low power auxiliary stations will be licensed for used with a specific broadcast or low power TV station or combination of stations licensed to the same licensee within the same community.
- (2) A broadcast network entity.
- (3) A cable television system operator who operates a cable system that produces program material for origination or access cablecasting as defined in §76.5(r)
- (4) Motion picture producers as defined in §74.801.
- (5) Television program producers as defined in §74.801.
- (6) Licensees an conditional licensees of stations in the Multipoint Distribution service and Multichannel Multipoint Distribution Service as defined in §21.2 of this chapter, or entities that hold an executed lease agreement with an MDS or MMDS licensee or conditional licensee or with an Instructional Television Fixed service licensee or permittee.