

The common and difference between MOD-16PRO and FREEBASS_RX

The submitted sample MOD-16PRO is wireless microphones receiver operating within the frequency range of 740 MHz to 769 MHz. The receiving frequency can be selected manually or auto-tuned at one frequency point as the table “Frequency Range and Channel List” showed. They are powered by AC/DC adaptor.

Model FREEBASS-RX is identical to MOD-16PRO except audio signal display panel, a mechanical indicator is used to display the volume in FREEBASS_RX, MOD-16PRO is LED indicating. The power circuit and RF circuit is same.

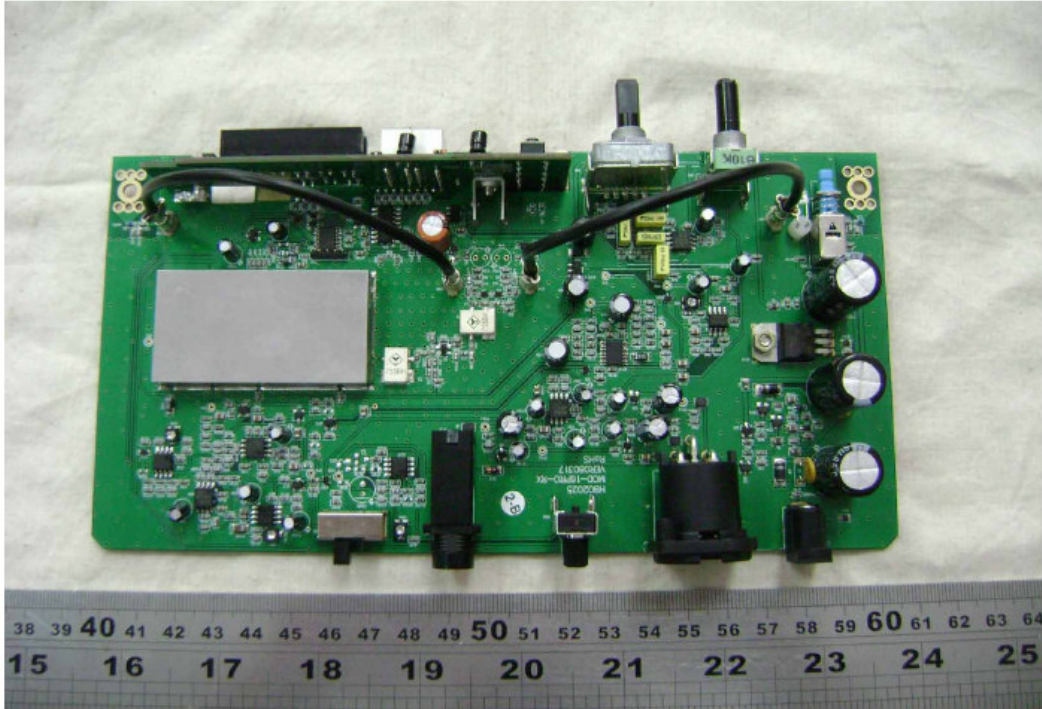
The following pages show the common and difference with photos.

Photo description:

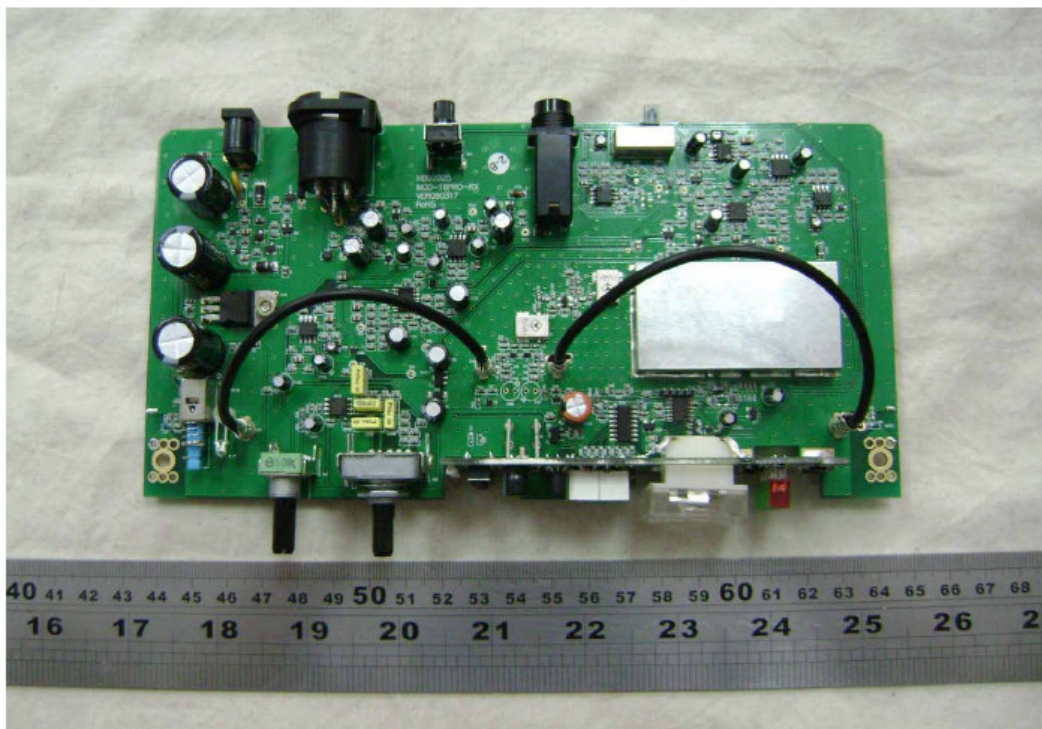
Common:

MOD-16PRO and FREEBASS_RX has same main controller, RF module and power supply.

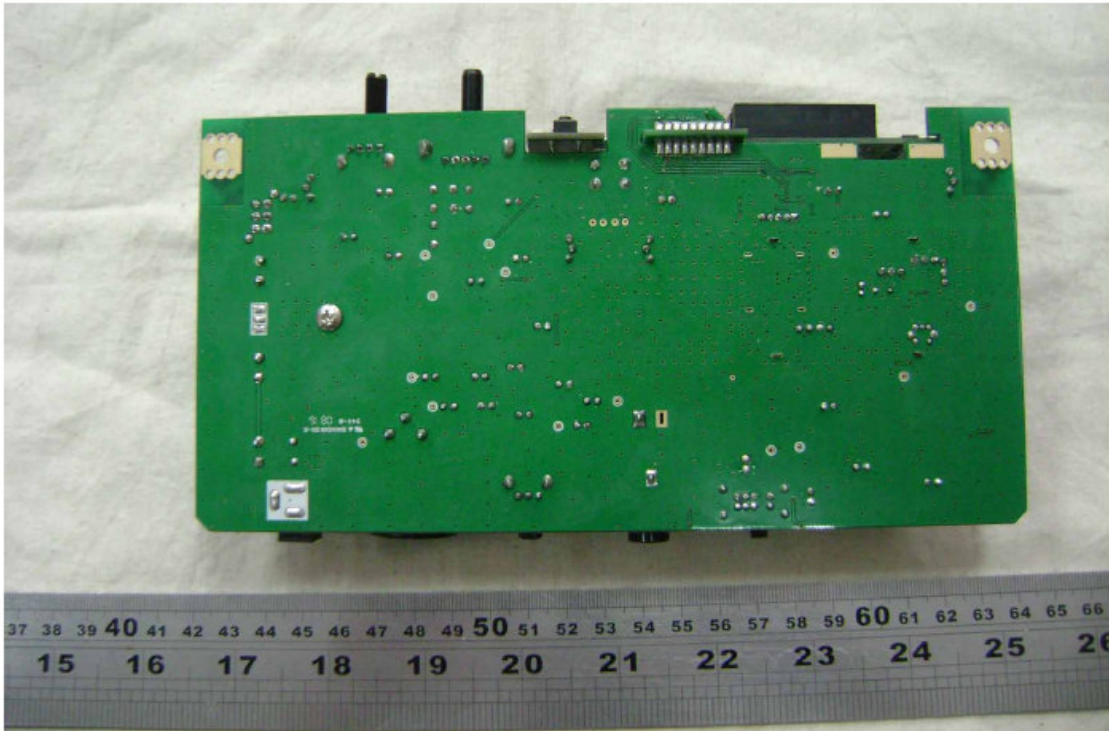
MOD-16PRO



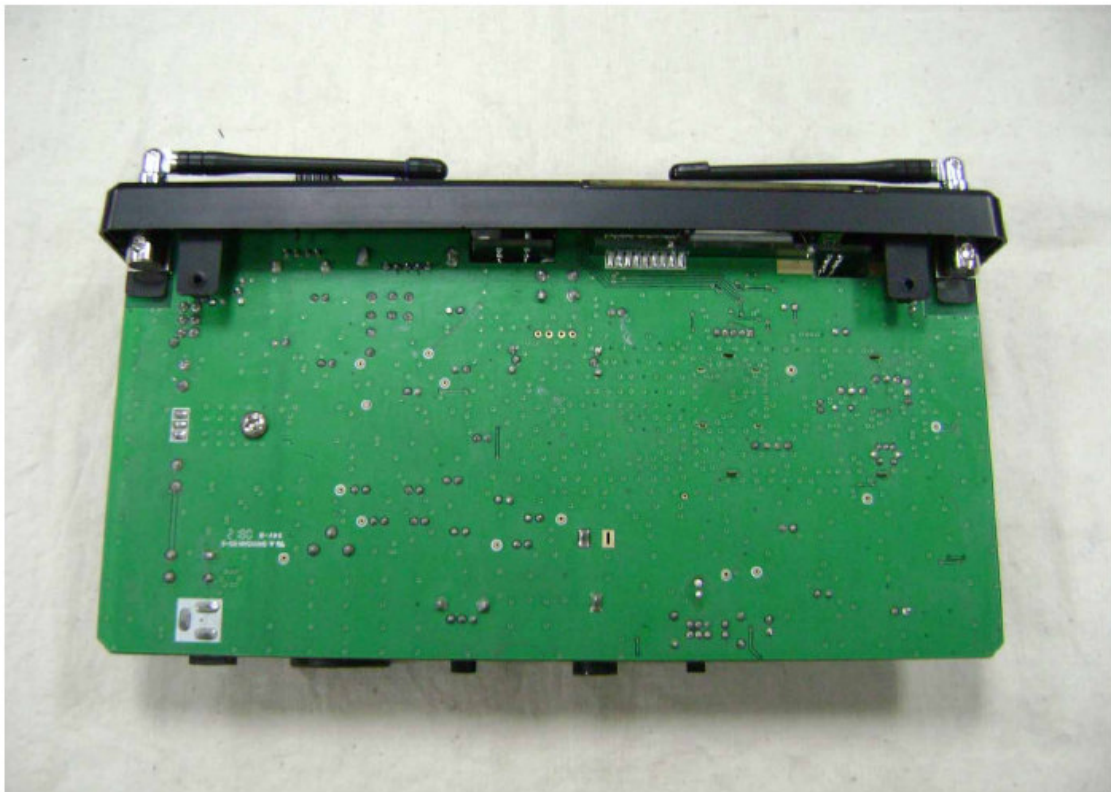
FREEBASS_RX



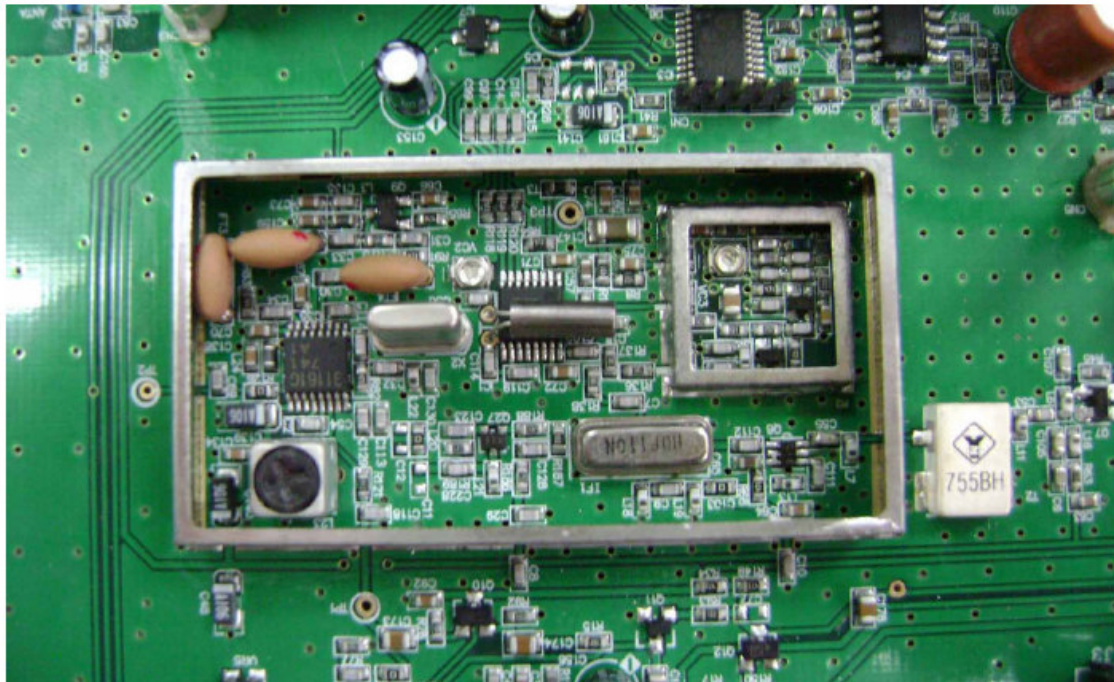
MOD-16PRO



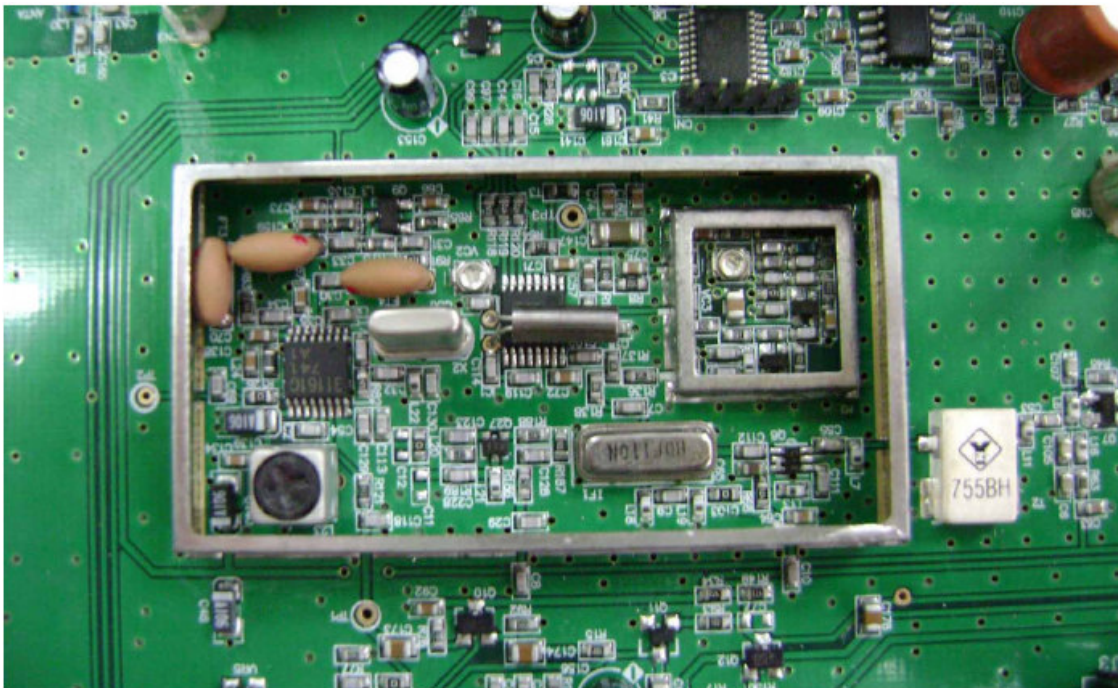
FREEBASS_RX



MOD-16PRO



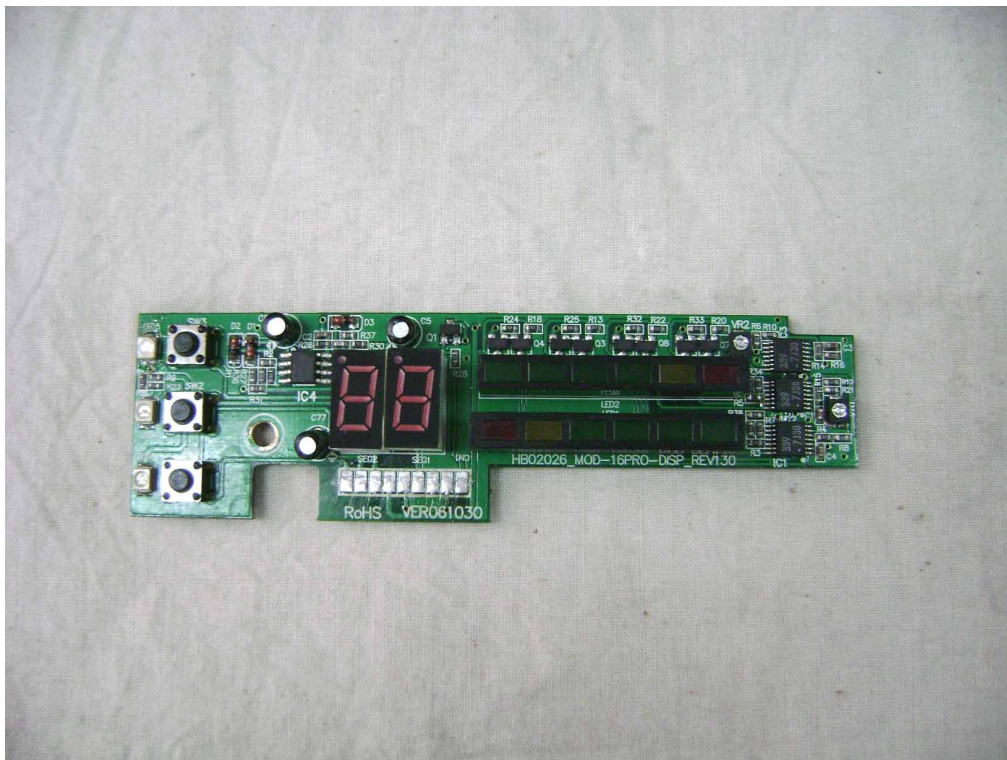
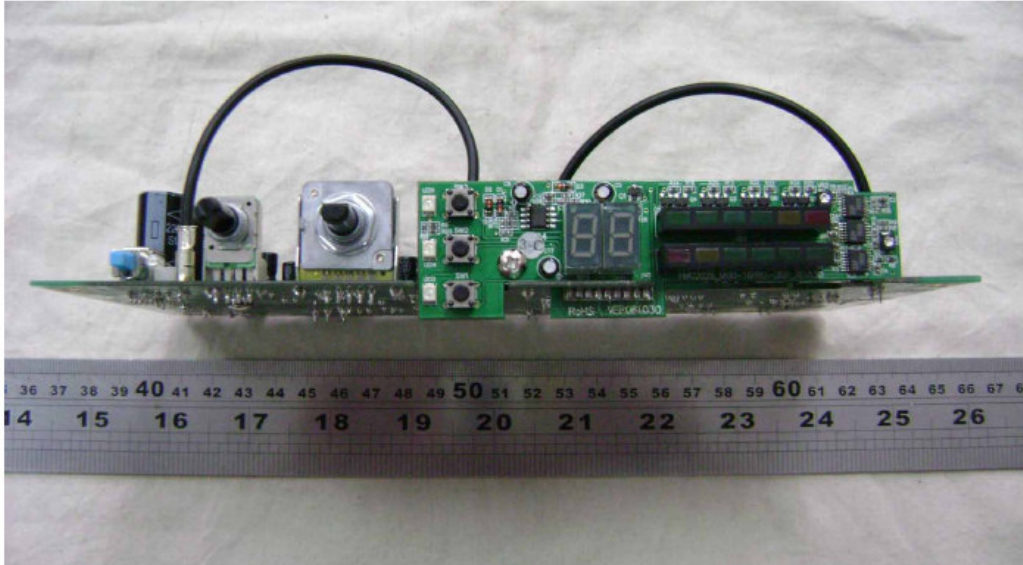
FREEBASS_RX

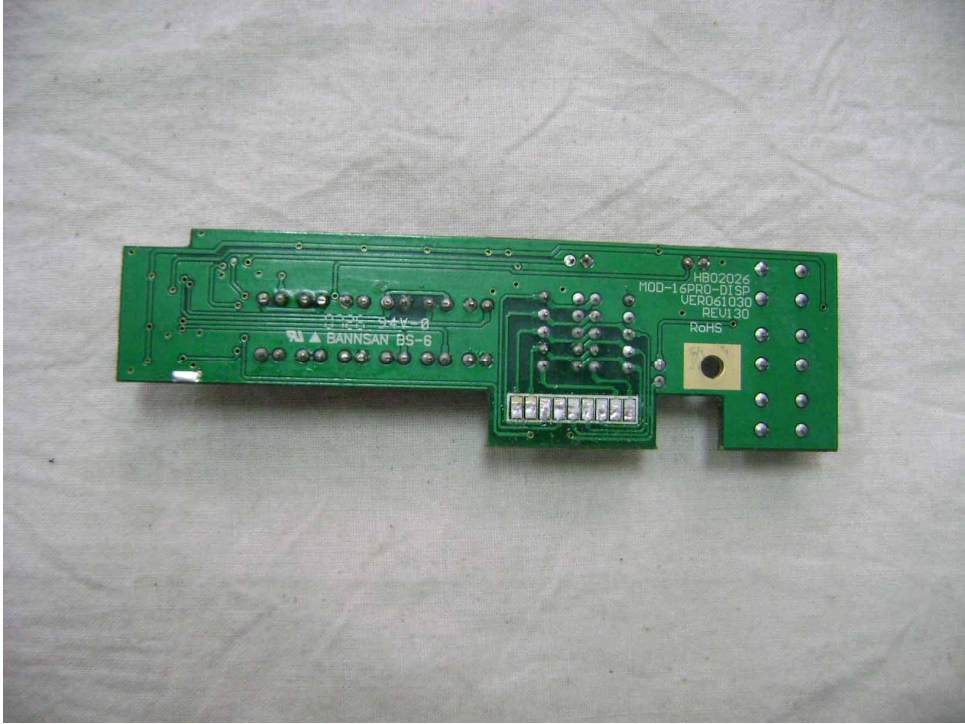


Difference

Model FREEBASS-RX is identical to MOD-16PRO except audio signal display panel, a mechanical indicator is used to display the volume in FREEBASS_RX, MOD-16PRO is LED indicating

MOD-16PRO





FREEBASS_RX

