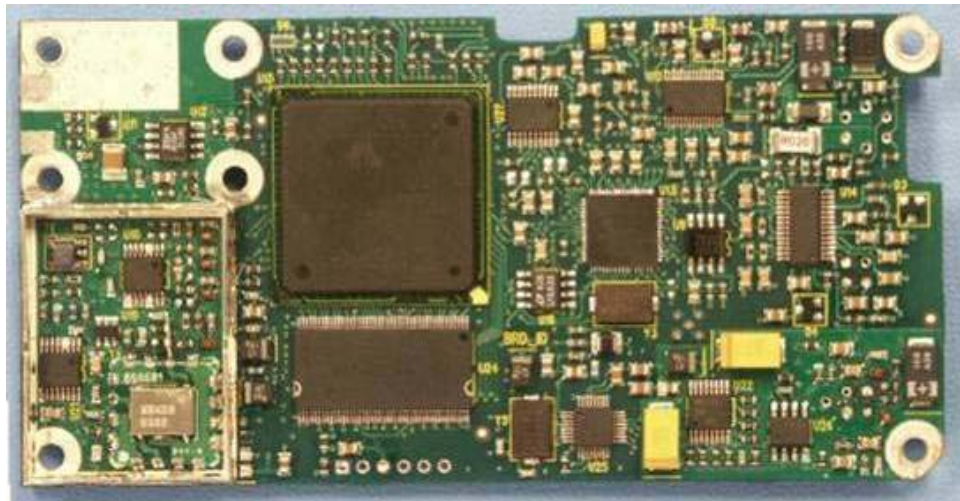




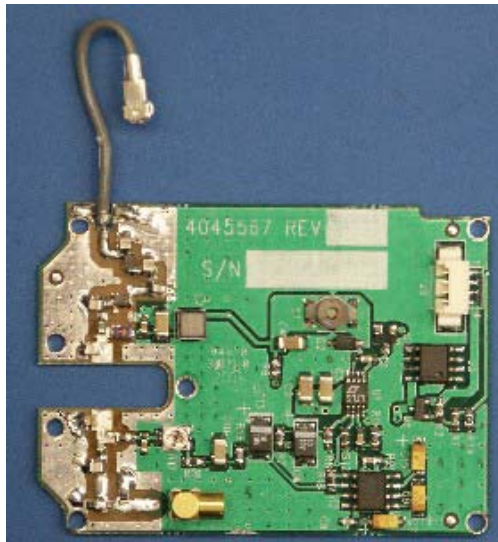
Modulator PCB Top



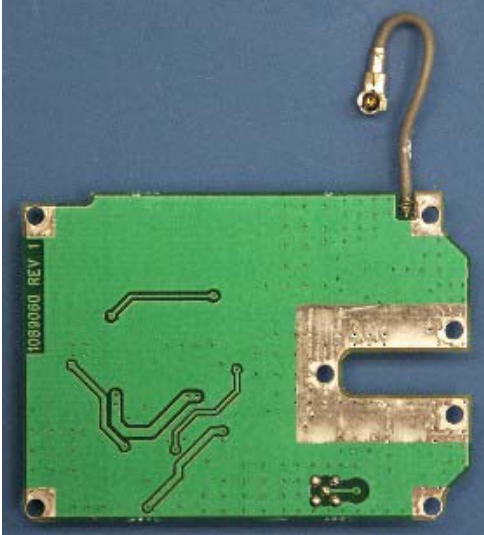
Modulator PCB Bottom



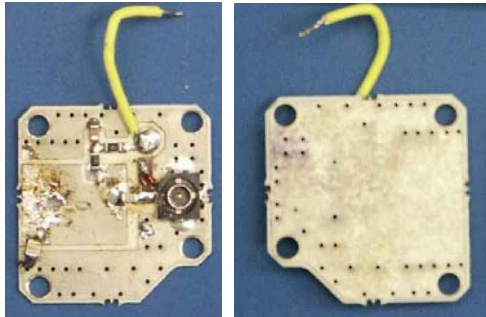
Modulator PCB In Housing



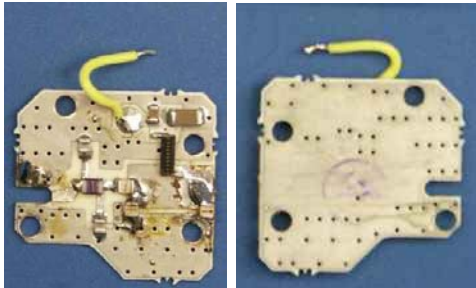
Pre amp  
Top



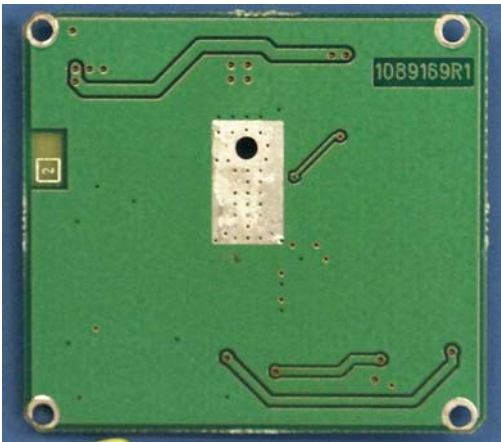
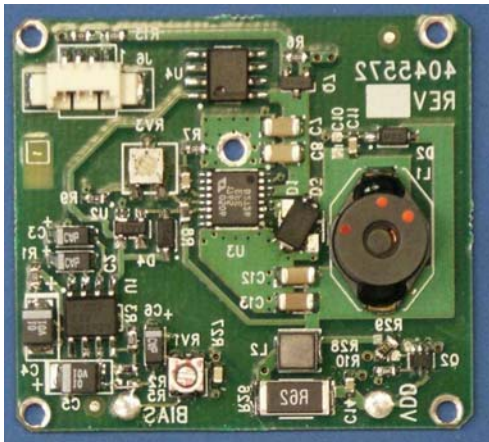
Pre amp  
Bottom



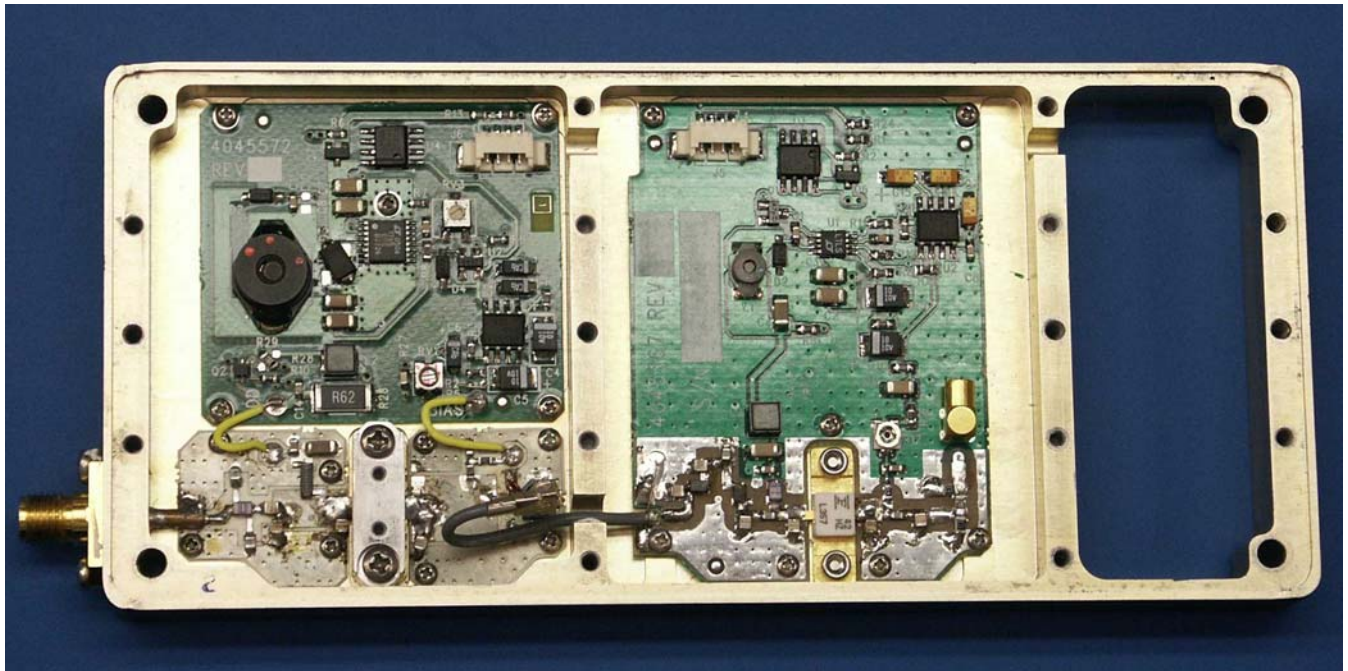
PA input  
Top and Bottom



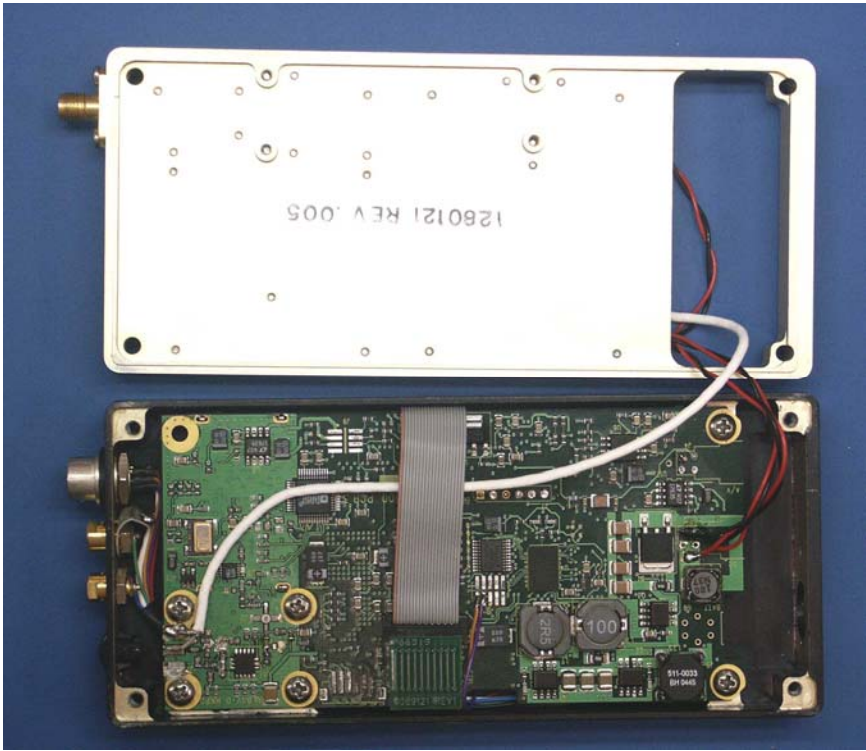
PA output  
Top and Bottom



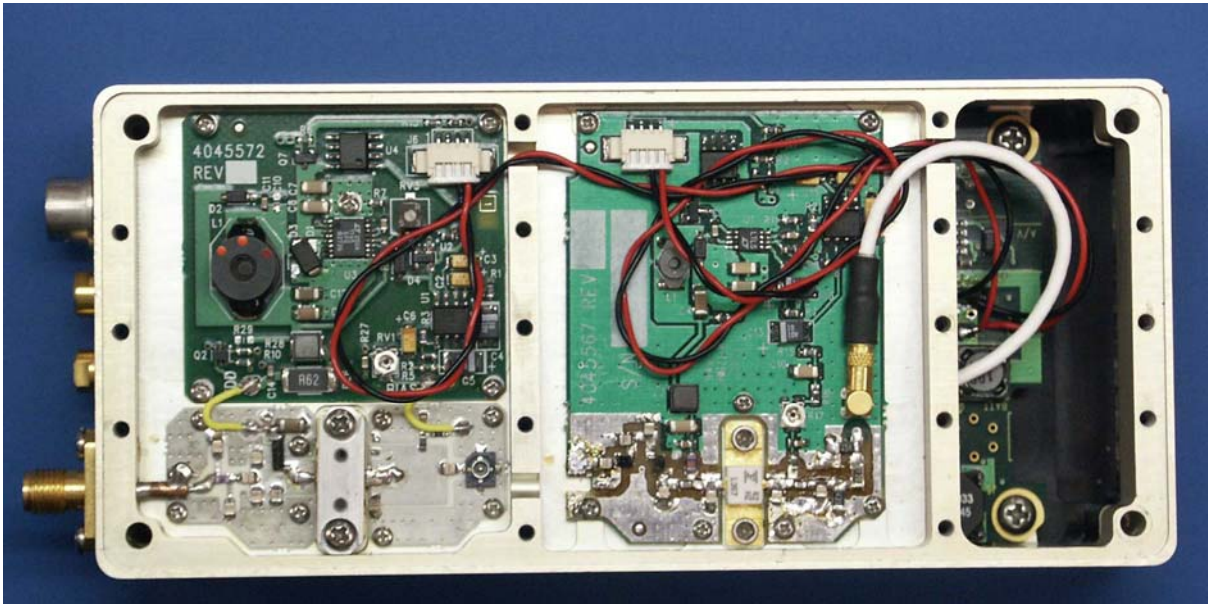
PA power supply  
Top and Bottom



Amplifiers  
In Housing



Bottom of Amplifier Housing,  
Connected to Modulator



Amplifier and Modulator  
Assemblies Mounted