

EUT:SCANNER

FCC ID:GYUSL760A

SILITEK CORPORATION

USER'S MANUAL

EVHRT D

# SL-760A USB Color Sheetfed Scanner User's Manual

All rights reserved

No part of this publication can be reproduced, transmitted, transcribed stored in retrieval system or translated into any language in any form by any means without the prior written consent of owners.

Information in this manual is subject to change without notice and does not represent a commitment on the part of the vendor.

All product names are copyright, trademarks or tradenames of their respective owners.

First Edition  
February 13, 1998

Printed in Taiwan

# Overview

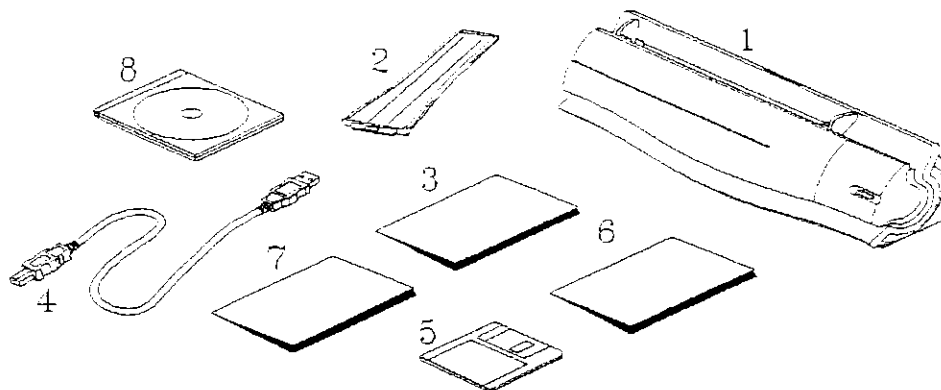
This booklet provides a brief summary information that will familiarize you with the USB color scanner to get you up and running quickly.

- A first look at the system.
- Basic information you need to know before you operate the system for the first time.
- An introduction of setting up and operating the system.

## Check package contents

Before doing anything else, carefully unpack the Scanner and checks included accessories.

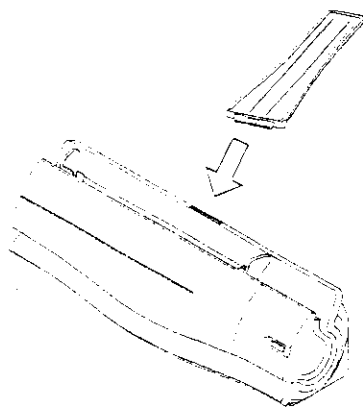
- 1 Scanner
- 2 Paper holder
- 3 Calibration sheet
- 4 USB cable
- 5 Installation device driver diskette
- 6 User's manual
- 7 Quick installation guide
- 8 Application software CD



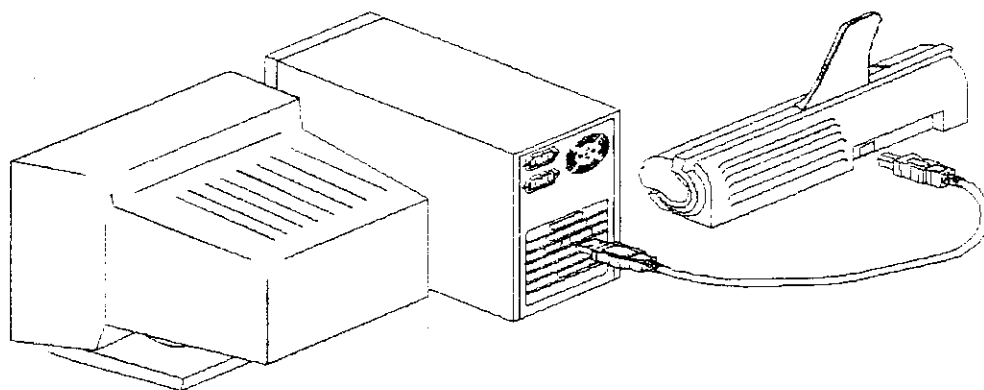
# Installation

## Hardware

- 1.1 Insert the paper holder into the top slot of the scanner.



- 1.2 Connect the USB cable from PC system to the scanner USB port.



# Getting Started

Once you have done your set up that is not yet to scan. If you are ready to scan image into your computer that you have to read the following instructions carefully.

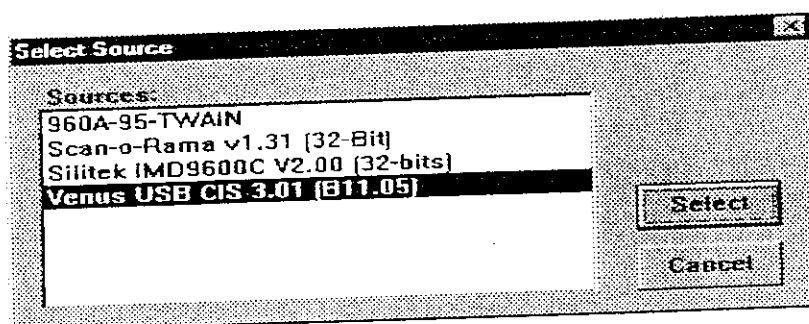
## Installing your scanner

- Insert the Application software CD into the CD-ROM Drive.
- Following the instructions on-screen to complete software installation.
- Plug the USB cable into the scanner from computer's USB port when the software instructs you to set up scanner installation.
- Calibrate your scanner is very important for your scanning image. Therefore, ensure a calibration to be done at the first time before you start your scanner with a calibration sheet, which comes with the scanner package.

## Scanner Calibration

The following step as below for your scanner calibration

- Insert calibration sheet into the scanner.
- Activate the software bundled with scanner.
- Choose **Select source** under application software menu bar to select device driver.
- Back to AP main menu to select **Acquire** under File or Scan, click it, then it will appear an USB Device Driver Interface dialog box.
- Select **Setting**, it will pop up Enhance dialog box and click **Shading** then start to scan a calibration sheet, click **Exit** after shading done.
- Now you can start your scanner.



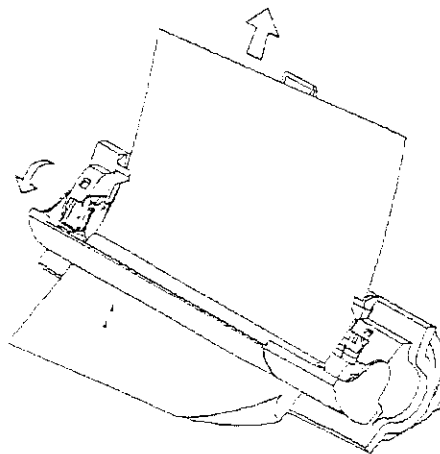
# Troubleshooting Tip

## SCANNER NOT FOUND

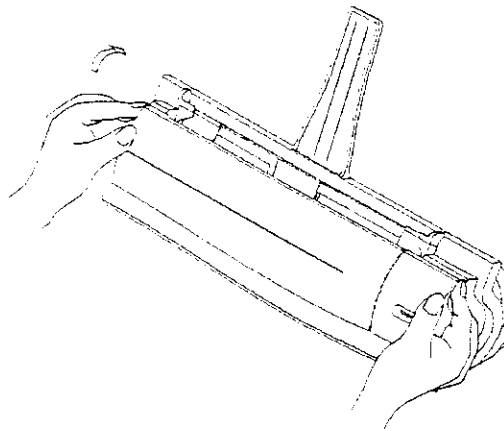
- Check USB is detected.
- Check the USB cable is properly plugged in.
- Make sure the scanner service panel is firmly closed.

## PAPER JAM

- Open the front of service panel and carefully remove the paper.



- Close the scanner service panel until you hear a “Click”, which indicates the service panel is closed securely.



## SCANNER SPECIFICATION

Scanner type	Portable Color Sheetfed Scanner.
Resolution	Horizontal    300dpi Vertical       600dpi
Scanning Modes	24bit color 256 gray scale ( 8-bit grayscale ) B&W text mode ( binary )
Max. Scan Size	8.5" (W) x 14" (L)
Min. Scan Size	3.5" (W) x 2.2" (L)
Scanning Speed	9ms/line ( 24bit color mode ) 3ms/line ( grayscale/ B&W )
Interface	USB
Dimension	12.1" x 3.2" x 3.2" (308mm x 80mm x 82mm)
Weight	0.8 kg
Power Requirements	USB bus power, +5v, 500ma ( Max. )
Power consumption	2.2W Max. ( 0.5W on standby mode)
Operating Temperature	5°C to 40°C, without condensation
Storage Temperature	-40°C to 60°C, without condensation.
Operating Humidity	15% to 80% RH, without condensation.
Storage Humidity	up to 90% RH, without condensation.
Motor jam release	20 sec. When jam happens.
Paper thickness	0.3mm Max. ( 42lb) for single sheets. 0.15mm Max. (20lb) for sheetfed with ADF. 0.06mm Min. (12lb).
Driver Support	32bit Twain version 1.6 or above.
EMC	FCC Class B, CE mark EMC and VCCI.
Safety	UL, CSA, GS and T mark.

## **PAPER BECOMES SKEWED IN THE SCANNER**

1. Inspect the service panel is properly closed.
2. Inspect the feeder (Rubber Roller) if there are any ink, toner or foreign particles on. If yes, please remove them.
3. Follow the maintenance tip procedure for feeder.

## **SCANNED IMAGE DOES NOT MATCH DOCUMENT QUALITY**

When you scan documents using your favorite application software such as image editing software, OCR, fax and others, the scanned image output on your monitor screen does not match the document, which may has black streak, black spots or fuzzy image.

1. Check if the Contact Image Sensor (CIS) lens is coated with foreign particles.
2. Clean with flannel cloth or non-abrasive cloth by wiping from side to side. Warning: Do not attempt to open or remove the CIS lens by yourself, as it may damage scanner.
3. Try to calibrate your scanner again. ( Please see the Calibration procedure )

## **SCANNED IMAGE TOO DARK OR TOO LIGHT**

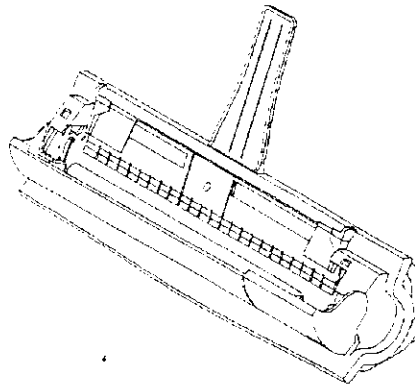
1. Please adjust the brightness and contrast setting properly on your PC monitor.
2. Also you may adjust the device driver's brightness setting.  
Note: If the document you are scanning has a dark background, you may need to adjust the brightness or gamma correction to get the right image output on the screen.
3. Check the application software, which you are using. If there is brightness or contrast setting off, try to reset it.



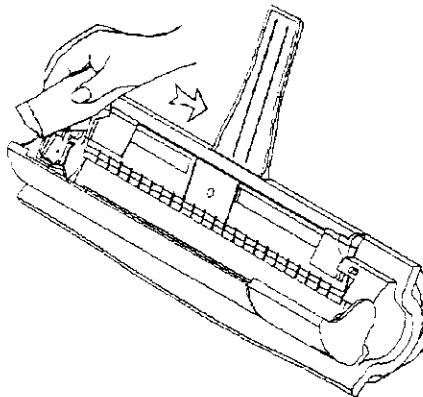
## Maintenance Tip

To assure the maximum image quality and performance of the scanner, please always keep your scanner in good conditions. In case of the feeder ( Rubber Roller ) has dirty particles, ink or paper coatings, which you need to clean it to ensure the scanner image quality.

1. Open the service panel of the scanner. Inspect the condition of the rubber roller if there are dirt.



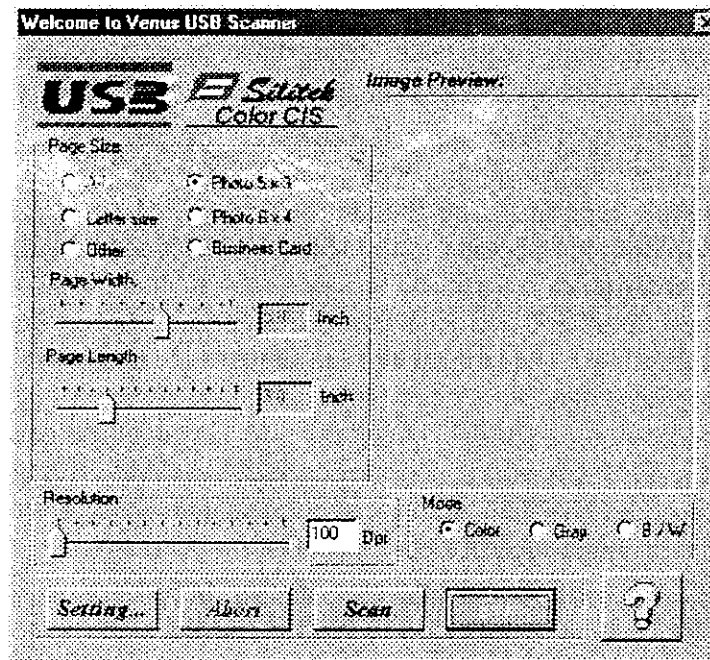
2. Clean with flannel cloth or non-abrasive cloth with naphtha or isopropyl alcohol (95%)



## Warning:

Remove staples, paper clips and other foreign objects in the paper before scanning. That may result in paper jam, paper skewing or even cause damage to the scanner.

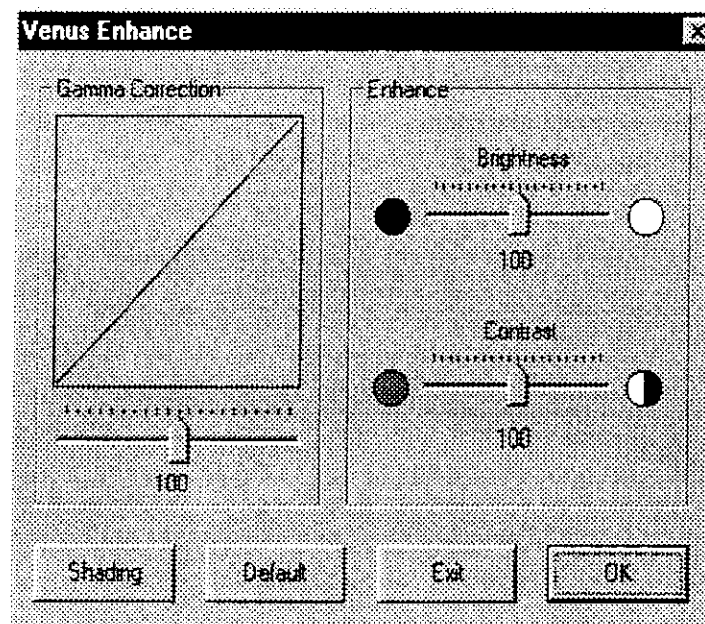
Open the USB Dialog box to configure to get image output



## Setting

Sometimes you may want to change the setting on your scanned image.

For example, if the image quality of the document is too dark or too bright then you may create a more visible image by setting adjustment. Click the **setting** in USB dialog box then pop up a Enhance dialog box that you will be able to customize the scanned image to meet your specification.



# Software

Set up Win95/ OSR2 Version. ( Note: Use OSR2 setup )  
After the setup is completed successfully then execute the  
USBUPP.EXE file on OSR2 CD Pack.

- 2.0 Double click to select **Add New Hardware** in the Control Panel.
- 2.1 " Add New Hardware Wizard " dialog box appears and click **next**.
- 2.2 Select " No " then click **next**.
- 2.3 Select " ? other device " and double click it.
- 2.4 Select " Standard USB Host Controller" and "USB Root Hub" then click **next**.
- 2.5 Click **finish**.
- 2.6 Switch back to Control Panel.
- 2.7 Double click to select **System** in the Control Panel.
- 2.8 Appears " System Properties " dialog box, select " Device Manager" and double click " Standard serial bus controller" and " USB Root Hub ".
- 2.9 Select " Driver " and click " update Driver " to select " No, select driver from list " and click **next**.
- 2.10 " Update Device Driver Wizard " dialog box appears then click **Finish**.
- 2.11 Plug in your scanner, the system will display a message "can't find **uhcd.sys** files". Then click Browse or type to change path to " C: Windows \ System \ "
- 2.12 Now restart your computer.

# **What you will need in your PC system**

**Ensure your PC system to meet the follow requirements, before you install your new scanner.**

**Hardware and software requirements :**

- **IBM PC or IBM PC compatible with Pentium USB port support under Win95/OSR2 version or Win 98.**
- **90MB Hard Disk free space at least.**
- **32MB RAM memory or higher (64MB Recommended).**
- **Display – SVGA.**

## **Warning**

**Updating or revising this manual or making any changes to the information herein will be initiated when the company deems it necessary. The company reserves the right to take the above mentioned actions and is under no obligation to notify any person of such actions in advance or afterwards.**

## FEDERAL COMMUNICATIONS COMMISSION

### NOTE

This equipment has been tested and found to comply with the limits for a Class B digital device, pursuant to Part 15 of the FCC Rules. These limits are designed to provide reasonable protection. This equipment generates, uses and can radiate radio frequency energy and, if not installed and used in accordance with the instructions, may cause harmful interference to radio communications. However, there is no guarantee that interference will not occur in a particular installation. If this equipment does cause harmful interference to radio or television reception, which can be determined by turning the equipment off and on, the user is encouraged to try to correct the interference by one or more of the following measures:

- Reorient or relocate the receiving antenna.
- Increase the separation between the equipment and receiver.
- Connect the equipment into an outlet on a circuit different from that to which the receiver is connected.
- Consult the dealer or an experienced radio/TV technician for help.

Shielded interface cables must be used in order to comply with emission limits.

Changes or modifications not expressly approved by the party responsible for compliance could void the user's authority to operate the equipment.