

Antenna OTA 3D Antenna Pattern

Information	
Date	44293
Start Time	44293.74097
Finish Time	44293.74514
Lab Name	Max860
Operator	ATEN
Project Name	GDC-3-ZW-F1
Manufacturer	PASSIVE T03
Model Name	ZW-EU-2
Hardware \	1
Software	V 3.6.1 Beta
Test Condition	Free Space
Temperature	N/A
Humidity	N/A
Note	N/A

Test List
800MHz
804MHz
808MHz
812MHz
816MHz
820MHz
824MHz
828MHz
832MHz
836MHz
840MHz
844MHz
848MHz
852MHz
856MHz
860MHz
864MHz
868MHz
872MHz
876MHz
880MHz
884MHz
888MHz
892MHz
896MHz
900MHz
904MHz
908MHz
912MHz
916MHz
920MHz
924MHz
928MHz
932MHz
936MHz
940MHz
944MHz
948MHz
952MHz
956MHz
960MHz
964MHz
968MHz
972MHz
976MHz
980MHz
984MHz
988MHz
992MHz
996MHz
1GHz

Table with columns: Feature, P, R, F1, and 100 numerical columns for each metric. Rows include: Accuracy, Precision, Recall, F1 Score, and various precision@k and recall@k metrics.

Table with columns: Feature, P, R, F1, and 100 numerical columns for each metric. Rows include: Accuracy, Precision, Recall, F1 Score, and various precision@k and recall@k metrics.

Table with columns: Feature, P, R, F1, and 100 numerical columns for each metric. Rows include: Accuracy, Precision, Recall, F1 Score, and various precision@k and recall@k metrics.

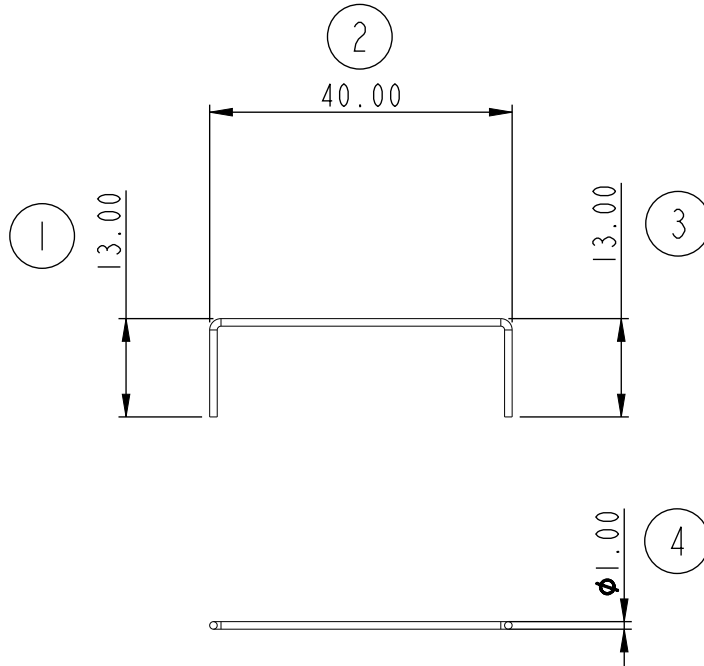
Table with columns: Feature, P, R, F1, and 100 numerical columns for each metric. Rows include: Accuracy, Precision, Recall, F1 Score, and various precision@k and recall@k metrics.

Table with columns: Feature, P, R, F1, and 100 numerical columns for each metric. Rows include: Accuracy, Precision, Recall, F1 Score, and various precision@k and recall@k metrics.

Table with columns: Feature, P, R, F1, and 100 numerical columns for each metric. Rows include: Accuracy, Precision, Recall, F1 Score, and various precision@k and recall@k metrics.

Note:
1. (N) BALL SYMBOLS ARE CRITICAL DIMENSIONS

REVISIONS		
REV	DESCRIPTION	ENGR
M01	1ST ISSUE	0801



Climax

CLIMAX PRECISION IND. CO., LTD.
Research and Design

Drawn: Ryan
Designed: BO
Checked: Amos
Approved: Elane

THESE DRAWINGS AND SPECIFICATIONS ARE THE PROPERTY OF CLIMAX TECHNOLOGY GROUP AND SHALL NOT BE REPRODUCED OR USED AS THE BASIS FOR THE MANUFACTURE OR DEVICES WITHOUT PERMISSION.

DIMENSIONAL TOLERANCES ±	M1	M2	S1	S2	P1	P2	C
0-6	0.05	0.10	0.15	0.20	0.05	0.10	0.5
6-30	0.10	0.20	0.15	0.25	0.10	0.15	1.0
30-80	0.15	0.25	0.20	0.30	0.20	0.40	2.0
80-180	0.15	0.30	0.25	0.45	0.40	0.80	3.0
180-315	0.20	0.50	0.40	0.60	0.60	1.20	3.0
315-800	0.30	0.80	0.70	1.10	0.80	1.50	4.0

Material:
Copper Plated Steel



Treatment:
Tin plating

A4
SIZE

DESCRIPTION:
GDC-3-ZW700-F1433

PART NO.:
8403000386C

SHEET | OF |

SCALE 1.000 UNITS MM USED ON

DWG NAME 8403000386C DWG NO. DATE 2021/05/05

REV.
M01