

FCC TEST REPORT

Client Name : ACCO Brands, Inc
Address : 1500 Fashion Island Blvd., 3rd Floor, San Mateo, CA
94404, USA
Product Name : Vertical Wireless Mouse
Date : Apr. 30, 2020



Shenzhen Anbotek Compliance Laboratory Limited

Contents

1. General Information.....	4
1.1. Client Information.....	4
1.2. Description of Device (EUT).....	4
1.3. Auxiliary Equipment Used During Test.....	5
1.4. Description of Test Modes.....	5
1.5. List of Channels.....	6
1.6. Description of Test Setup.....	7
1.7. Test Equipment List.....	8
1.8. Measurement Uncertainty.....	9
1.9. Description of Test Facility.....	9
2. Summary of Test Results.....	10
3. Conducted Emission Test.....	11
3.1. Test Standard and Limit.....	11
3.2. Test Setup.....	11
3.3. Test Procedure.....	11
3.4. Test Data.....	11
4. Radiated Emission and Band Edge.....	12
4.1. Test Standard and Limit.....	12
4.2. Test Setup.....	13
4.3. Test Procedure.....	14
4.4. Test Data.....	15
5. 20dB Bandwidth Test.....	25
5.1. Test Standard and Limit.....	25
5.2. Test Setup.....	25
5.3. Test Procedure.....	25
5.4. Test Data.....	25
6. Antenna Requirement.....	28
6.1. Test Standard and Requirement.....	28
6.2. Antenna Connected Construction.....	28
APPENDIX I -- TEST SETUP PHOTOGRAPH.....	29
APPENDIX II -- EXTERNAL PHOTOGRAPH.....	30
APPENDIX III -- INTERNAL PHOTOGRAPH.....	33



TEST REPORT

Applicant : ACCO Brands, Inc
Manufacturer : ACCO Brands, Inc
Product Name : Vertical Wireless Mouse
Model No. : M01500-M
Trade Mark : Kensington
Rating(s) : Input: DC 1.5V by "AA" battery inside

Test Standard(s) : FCC Part15 Subpart C, Paragraph 15.249

Test Method(s) : ANSI C63.10: 2013

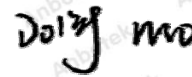
The device described above is tested by Shenzhen Anbotek Compliance Laboratory Limited to determine the maximum emission levels emanating from the device and the severe levels of the device can endure and its performance criterion. The measurement results are contained in this test report and Shenzhen Anbotek Compliance Laboratory Limited is assumed full of responsibility for the accuracy and completeness of these measurements. Also, this report shows that the EUT (Equipment Under Test) is technically compliant with the FCC Part 15 Subpart C requirements.

This report applies to above tested sample only and shall not be reproduced in part without written approval of Shenzhen Anbotek Compliance Laboratory Limited.

Date of Receipt Apr. 08, 2020

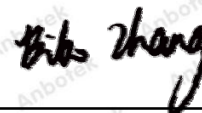
Date of Test Apr. 08~21, 2020

Prepared by



(Engineer / Dolly Mo)

Reviewer



(Supervisor / Bibo Zhang)

Approved & Authorized Signer



(Manager / Tom Chen)

1. General Information

1.1. Client Information

Applicant	:	ACCO Brands, Inc
Address	:	1500 Fashion Island Blvd., 3rd Floor, San Mateo, CA 94404, USA
Manufacturer	:	ACCO Brands, Inc
Address	:	1500 Fashion Island Blvd., 3rd Floor, San Mateo, CA 94404, USA

1.2. Description of Device (EUT)

Product Name	:	Vertical Wireless Mouse	
Model No.	:	M01500-M	
Trade Mark	:	Kensington	
Test Power Supply	:	DC 1.5V battery inside	
Test Sample No.	:	1-2-1(Normal Sample), 1-2-2(Engineering Sample)	
Product Description	:	Operation Frequency:	2408~2474MHz
	:	Number of Channel:	34 Channels
	:	Modulation Type:	FSK
	:	Antenna Type:	PCB Antenna
	:	Antenna Gain(Peak):	-2 dBi
Remark: 1) For a more detailed features description, please refer to the manufacturer's specifications or the User's Manual.			

1.3. Auxiliary Equipment Used During Test

--	--

1.4. Description of Test Modes

To investigate the maximum EMI emission characteristics generated from EUT, the test system was pre-scanning tested based on the consideration of following EUT operation mode or test configuration mode which possibly have effect on EMI emission level. Each of these EUT operation mode(s) or test configuration mode(s) mentioned above was evaluated respectively.

Pretest Mode	Description
Mode 1	CH01
Mode 2	CH17
Mode 3	CH34

For Conducted Emission	
Final Test Mode	Description
Mode 1	CH01
Mode 2	CH17
Mode 3	CH34

For Radiated Emission	
Final Test Mode	Description
Mode 1	CH01
Mode 2	CH17
Mode 3	CH34

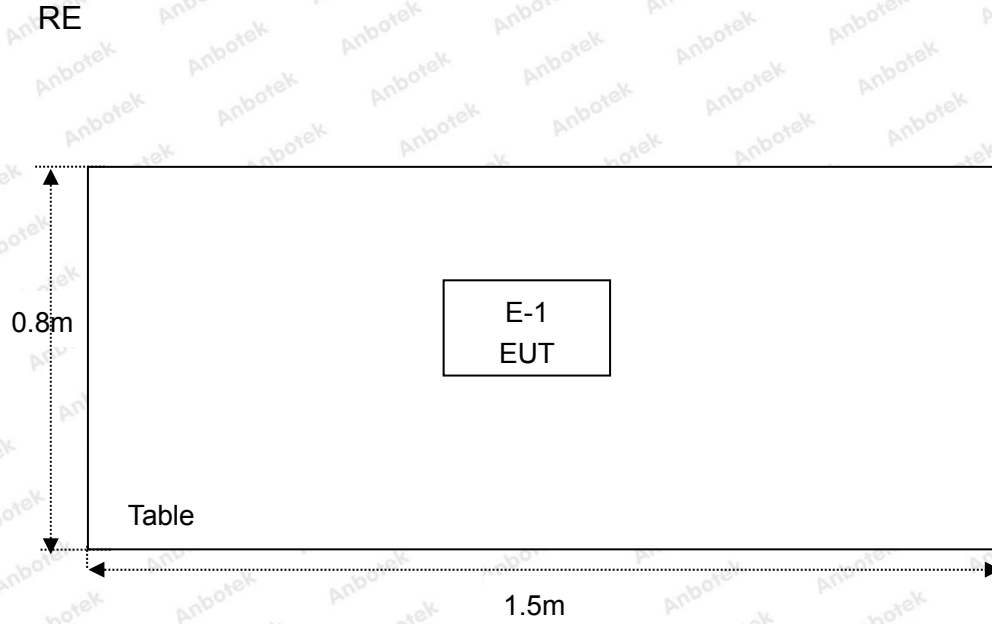
Note:

1. The engineering test program was provided and the EUT was programmed to be in continuously transmitting mode.

1.5. List of Channels

Channel	Freq. (MHz)	Channel	Freq. (MHz)	Channel	Freq. (MHz)	Channel	Freq. (MHz)
01	2408	02	2410	03	2412	04	2414
05	2416	06	2418	07	2420	08	2422
09	2424	10	2426	11	2428	12	2430
13	2432	14	2434	15	2436	16	2438
17	2440	18	2442	19	2444	20	2446
21	2448	22	2450	23	2452	24	2454
25	2456	26	2458	27	2460	28	2462
29	2464	30	2466	31	2468	32	2470
33	2472	34	2474	/	/	/	/

1.6. Description of Test Setup



1.7. Test Equipment List

Item	Equipment	Manufacturer	Model No.	Serial No.	Last Cal.	Cal. Interval
1.	L.I.S.N. Artificial Mains Network	Rohde & Schwarz	ENV216	100055	Nov. 04, 2019	1 Year
2.	EMI Test Receiver	Rohde & Schwarz	ESPI3	101604	Nov. 04, 2019	1 Year
3.	RF Switching Unit	Compliance Direction	RSU-M2	38303	Nov. 04, 2019	1 Year
4.	MAX Spectrum Analysis	Agilent	N9020A	MY51170037	Nov. 04, 2019	1 Year
5.	Preamplifier	SKET Electronic	BK1G18G30 D	KD17503	Nov. 04, 2019	1 Year
6.	Double Ridged Horn Antenna	Instruments corporation	GTH-0118	351600	Nov. 01, 2019	1 Year
7.	Bilog Broadband Antenna	Schwarzbeck	VULB9163	VULB 9163-289	Nov. 01, 2019	1 Year
8.	Loop Antenna	Schwarzbeck	FMZB1519B	00053	Nov. 01, 2019	1 Year
9.	Horn Antenna	A-INFO	LB-180400-K F	J211060628	Nov. 01, 2019	1 Year
10.	Pre-amplifier	SONOMA	310N	186860	Nov. 04, 2019	1 Year
11.	EMI Test Software EZ-EMC	SHURPLE	N/A	N/A	N/A	N/A
12.	RF Test Control System	YIHENG	YH3000	2017430	Nov. 04, 2019	1 Year
13.	Power Sensor	DAER	RPR3006W	15I00041SN045	Nov. 04, 2019	1 Year
14.	Power Sensor	DAER	RPR3006W	15I00041SN046	Nov. 04, 2019	1 Year
15.	MXA Spectrum Analysis	Agilent	N9020A	MY51170037	Nov. 04, 2019	1 Year
16.	MXG RF Vector Signal Generator	Agilent	N5182A	MY48180656	Nov. 04, 2019	1 Year
17.	Signal Generator	Agilent	E4421B	MY41000743	Nov. 04, 2019	1 Year
18.	DC Power Supply	LW	TPR-6420D	374470	Nov. 04, 2019	1 Year
19.	Constant Temperature Humidity Chamber	ZHONGJIAN	ZJ-KHWS80 B	N/A	Nov. 04, 2019	1 Year

1.8. Measurement Uncertainty

Radiation Uncertainty	:	Ur = 3.9 dB (Horizontal)
		Ur = 3.8 dB (Vertical)
Conduction Uncertainty	:	Uc = 3.4 dB

1.9. Description of Test Facility

The test facility is recognized, certified, or accredited by the following organizations:

FCC-Registration No.: 184111

Shenzhen Anbotek Compliance Laboratory Limited, EMC Laboratory has been registered and fully described in a report filed with the (FCC) Federal Communications Commission. The acceptance letter from the FCC is maintained in our files. Registration No. 184111, September 27, 2019.

ISED-Registration No.: 8058A

Shenzhen Anbotek Compliance Laboratory Limited, EMC Laboratory has been registered and fully described in a report filed with the (ISED) Innovation, Science and Economic Development Canada. The acceptance letter from the ISED is maintained in our files. Registration 8058A, March 07, 2019.

Test Location

Shenzhen Anbotek Compliance Laboratory Limited.

1/F, Building D, Sogood Science and Technology Park, Sanwei community, Hangcheng Street, Bao'an District, Shenzhen, Guangdong, China.518102

2. Summary of Test Results

Standard Section	Test Item	Result
15.203	Antenna Requirement	PASS
15.207	Conducted Emission	N/A
15.249	Radiated Emission	PASS
15.215(c)	20dB Bandwidth	PASS
15.249(c)	Band Edge	PASS
Remark: "N/A" is an abbreviation for Not Applicable.		

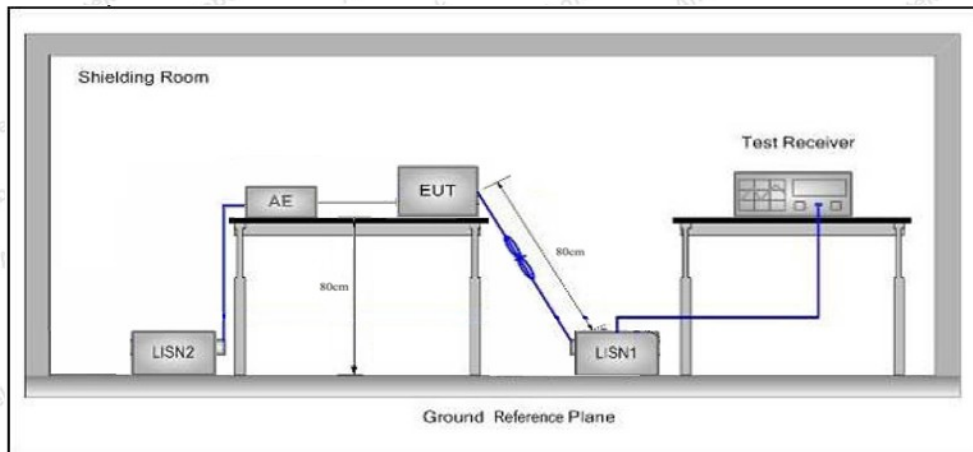
3. Conducted Emission Test

3.1. Test Standard and Limit

Test Standard	FCC Part15 Section 15.207		
Test Limit	Frequency	Maximum RF Line Voltage (dBuV)	
		Quasi-peak Level	Average Level
	150kHz~500kHz	66 ~ 56 *	56 ~ 46 *
	500kHz~5MHz	56	46
5MHz~30MHz	60	50	

Remark: (1) *Decreasing linearly with logarithm of the frequency.
(2) The lower limit shall apply at the transition frequency.

3.2. Test Setup



3.3. Test Procedure

The EUT system is connected to the power mains through a line impedance stabilization network (L.I.S.N.). This provides a 50ohm coupling impedance for the EUT system. Please refer the block diagram of the test setup and photographs. Both sides of AC line are checked to find out the maximum conducted emission. In order to find the maximum emission levels, the relative positions of equipment and all of the interface cables shall be changed according to FCC ANSI C63.10-2013 on Conducted Emission Measurement.

The bandwidth of test Vertical Wireless Mouse (ESCI) set at 9kHz.

The frequency range from 150kHz to 30MHz is checked.

3.4. Test Data

The EUT is powered by DC 1.5V battery inside inside, so there is no need to conduct this test.

4. Radiated Emission and Band Edge

4.1. Test Standard and Limit

Test Standard	FCC Part15 C Section 15.209 and 15.205				
Test Limit	Frequency (MHz)	Field strength (microvolt/meter)	Limit (dBuV/m)	Remark	Measurement distance (m)
	0.009MHz~0.490MHz	2400/F(kHz)	-	-	300
	0.490MHz-1.705MHz	24000/F(kHz)	-	-	30
	1.705MHz-30MHz	30	-	-	30
	30MHz~88MHz	100	40.0	Quasi-peak	3
	88MHz~216MHz	150	43.5	Quasi-peak	3
	216MHz~960MHz	200	46.0	Quasi-peak	3
	960MHz~1000MHz	500	54.0	Quasi-peak	3
	Above 1000MHz	500	54.0	Average	3
-		74.0	Peak	3	

Remark:

(1)The lower limit shall apply at the transition frequency.

(2) 15.35(b), Unless otherwise specified, the limit on peak radio frequency emissions is 20dB above the maximum permitted average emission limit applicable to the equipment under test. This peak limit applies to the total peak emission level radiated by the device.

Test Standard	FCC Part15 C Section 15.249					
Test Limit	Frequency (MHz)	Field Strength of fundamental ((millivolts /meter)	Field Strength of Harmonics (microvolts/meter)	Limit (dBuV/m)	Remark	Measurement distance (m)
	2400~2483.5	50	-	114.0	Peak	3
	2400~2483.5	50	-	94.0	Average	3
	2400~2483.5	-	500	74.0	Peak	3
	2400~2483.5	-	500	54.0	Average	3

Remark:

(1) 15.35(b), Unless otherwise specified, the limit on peak radio frequency emissions is 20dB above the maximum permitted average emission limit applicable to the equipment under test. This peak limit applies to the total peak emission level radiated by the device.

4.2. Test Setup

Figure 1. Below 30MHz

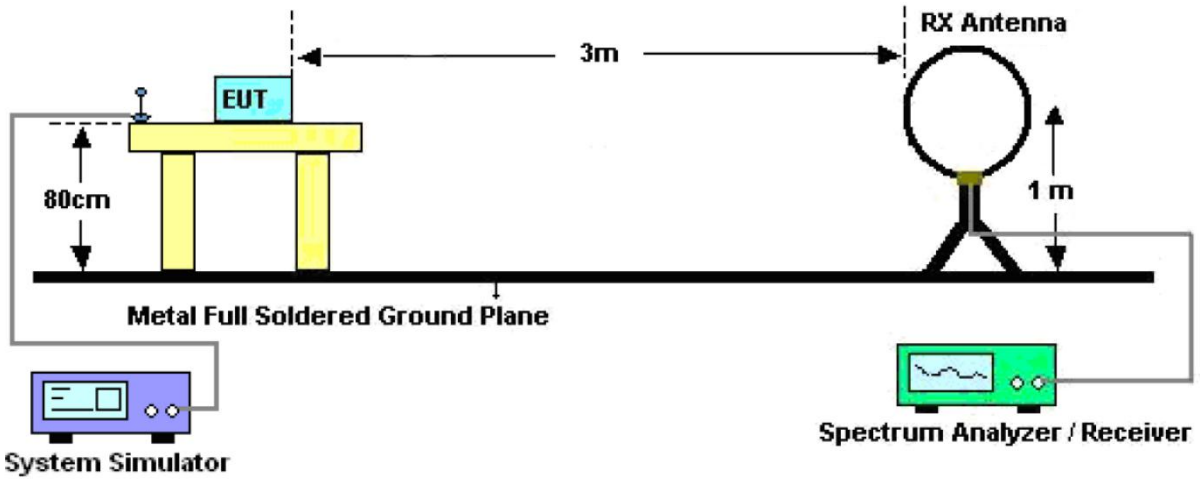


Figure 2. 30MHz to 1GHz

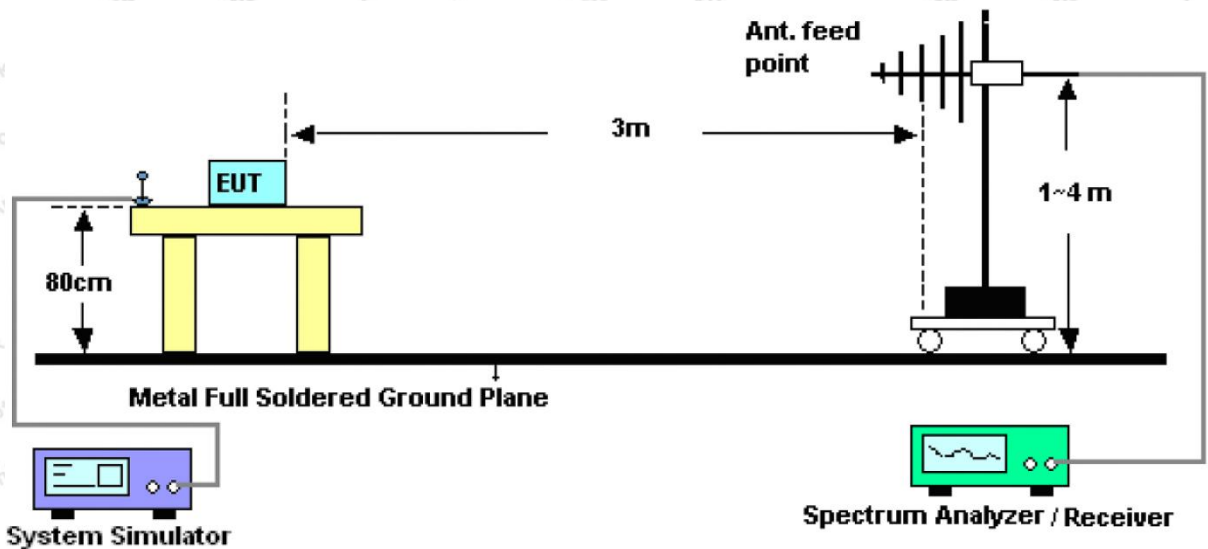
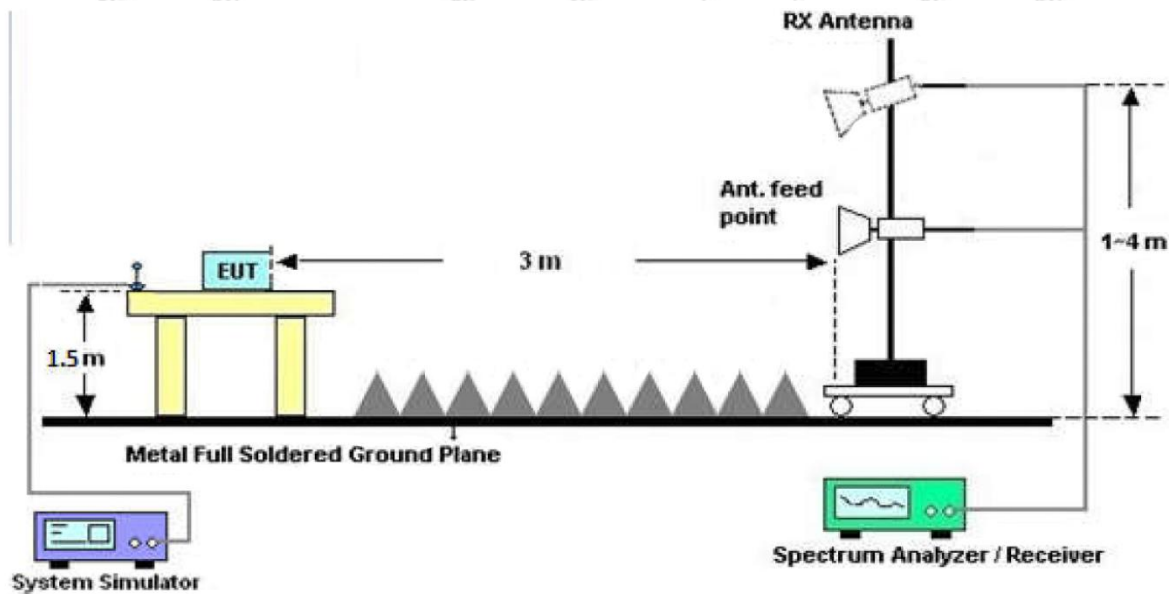


Figure 3. Above 1 GHz



4.3. Test Procedure

For below 1GHz: The EUT is placed on a turntable, which is 0.8m above the ground plane.

For above 1GHz: The EUT is placed on a turntable, which is 1.5m above the ground plane.

The turn table can rotate 360 degrees to determine the position of the maximum emission level. The EUT is set 3 meters away from the receiving antenna which is mounted on a antenna tower. The antenna can be moved up and down from 1 to 4 meters to find out the maximum emission level. Rotated the EUT through three orthogonal axes to determine the maximum emissions, both horizontal and vertical polarization of the antenna are set on test. The EUT is tested in 9*6*6 Chamber. The device is evaluated in xyz orientation.

For the radiated emission test above 1GHz:

Place the measurement antenna away from each area of the EUT determined to be a source of emissions at the specified measurement distance, while keeping the measurement antenna aimed at the source of emissions at each frequency of significant emissions, with polarization oriented for maximum response. The measurement antenna may have to be higher or lower than the EUT, depending on the radiation pattern of the emission and staying aimed at the emission source for receiving the maximum signal. The final measurement antenna elevation shall be that which maximizes the emissions. The measurement antenna elevation for maximum emissions shall be restricted to a range of heights of from 1 m to 4 m above the ground or reference ground plane.

For 9kHz to 150kHz, Set the spectrum analyzer as:

RBW = 200Hz, VBW = 1kHz, Detector= Quasi-Peak, Trace mode= Max hold, Sweep- auto couple.

For 150kHz to 30MHz, Set the spectrum analyzer as:

RBW = 9KHz, VBW = 30kHz, Detector= Quasi-Peak, Trace mode= Max hold, Sweep- auto couple.

For 30MHz to 1000MHz, Set the spectrum analyzer as:

RBW = 100kHz, VBW =300kHz, Detector= Quasi-Peak, Trace mode= Max hold, Sweep- auto couple.

For above 1GHz,Set the spectrum analyzer as:

RBW =1MHz, VBW =1MHz, Detector= Peak, Trace mode= Max hold, Sweep- auto couple.

RBW =1MHz, VBW =10Hz, Detector= Average, Trace mode= Max hold, Sweep- auto couple.

4.4. Test Data

PASS

During the test, Pre-scan all kind of the place mode (X-axis, Y-axis, Z-axis), and found the X-axis is the worst case.

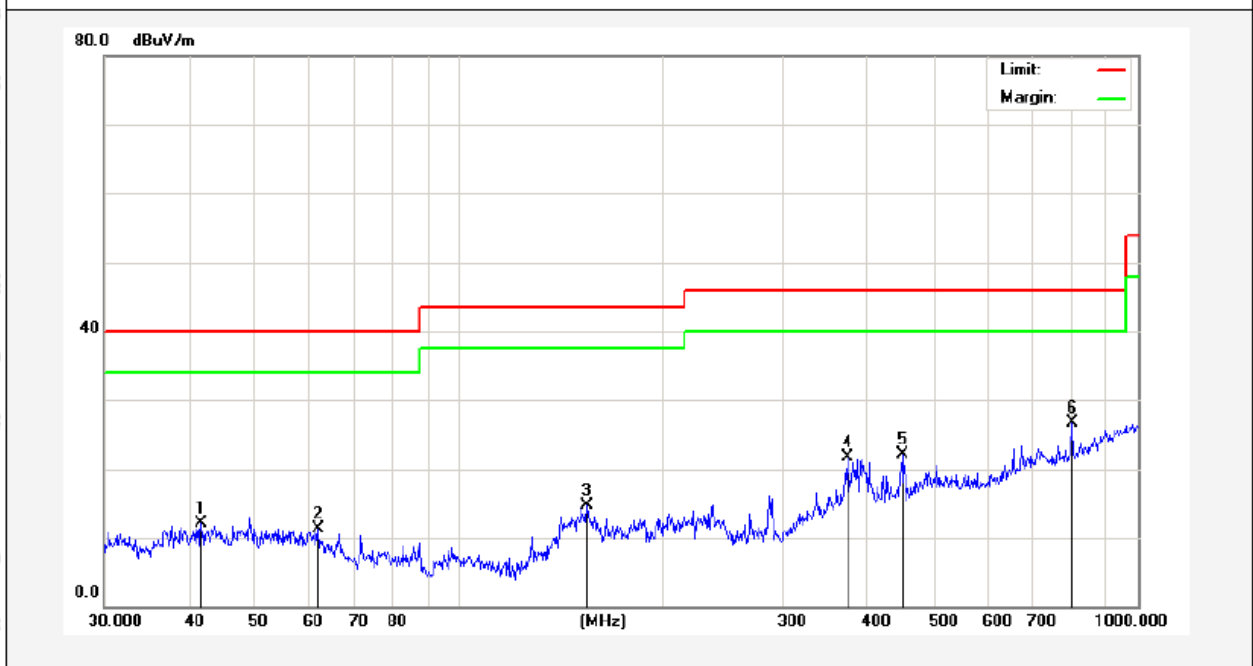
The test results of 9kHz-30MHz was attenuated more than 20dB below the permissible limits, so the results don't record in the report.

During the test, pre-scan all the modes, and found the Middle channel which is the worst case, only the worst case is recorded in the report



Test Results (30~1000MHz)

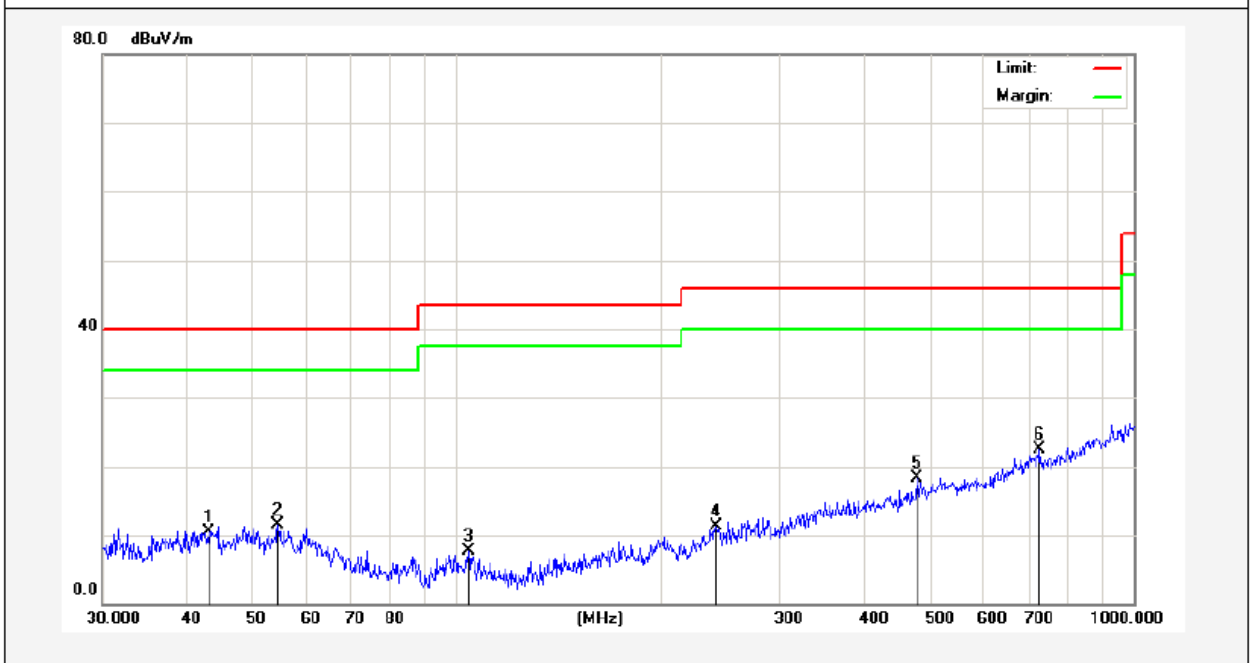
Test Mode: Mode 2
 Power Source: DC 1.5V battery inside
 Polarization: Vertical
 Temp.(°C)/Hum.(%RH): 23°C/57%RH



No.	Freq. (MHz)	Reading (dBUV)	Factor (dB/m)	Result (dBUV/m)	Limit (dBUV/m)	Over Limit (dB)	Detector	Height (cm)	degree (deg)	Remark
1	41.7129	28.89	-16.78	12.11	40.00	-27.89	QP	100	0	
2	61.9951	29.50	-18.22	11.28	40.00	-28.72	QP	100	360	
3	154.2786	35.39	-20.68	14.71	43.50	-28.79	QP	100	0	
4	373.3112	36.48	-14.71	21.77	46.00	-24.23	QP	100	360	
5	449.5558	36.03	-13.90	22.13	46.00	-23.87	QP	100	360	
6	798.9797	34.30	-7.55	26.75	46.00	-19.25	QP	100	0	

Test Results (30~1000MHz)

Test Mode: Mode 2
 Power Source: DC 1.5V battery inside
 Polarization: Horizontal
 Temp.(°C)/Hum.(%RH): 23°C/57%RH



No.	Freq. (MHz)	Reading (dBuV)	Factor (dB/m)	Result (dBuV/m)	Limit (dBuV/m)	Over Limit (dB)	Detector	Height (cm)	degree (deg)	Remark
1	43.0505	28.39	-17.79	10.60	40.00	-29.40	QP	100	0	
2	54.4516	29.74	-18.20	11.54	40.00	-28.46	QP	100	360	
3	104.1701	30.52	-22.86	7.66	43.50	-35.84	QP	100	0	
4	241.6763	31.59	-20.27	11.32	46.00	-34.68	QP	100	360	
5	478.8456	32.08	-13.76	18.32	46.00	-27.68	QP	100	0	
6	726.8052	32.32	-9.76	22.56	46.00	-23.44	QP	100	360	

Test Results (1GHz-25GHz)

Test Mode: CH01 (Low channel)									
Frequency (MHz)	Read Level (dBuV)	Antenna Factor (dB/m)	Cable Loss (dB)	Preamp Factor (dB)	Level (dBuV/m)	Limit (dBuV/m)	Over Limit (dB)	Pol.	Detector
2408.0000	93.30	31.12	2.18	35.33	91.27	114.00	-22.73	V	Peak
2408.0000	84.52	31.12	2.18	35.33	82.49	94.00	-11.51	V	AVG
4816.0000	47.11	34.01	2.58	34.65	49.05	74.00	-24.95	V	Peak
4816.0000	41.22	34.01	2.58	34.65	43.16	54.00	-10.84	V	AVG
7224.0000	43.45	36.16	2.97	35.07	47.51	74.00	-26.49	V	Peak
7224.0000	34.36	36.16	2.97	35.07	38.42	54.00	-15.58	V	AVG
9632.0000	*								
12040.0000	*								
14448.0000	*								
16856.0000	*								
2408.0000	90.31	31.12	2.18	35.33	88.28	114.00	-25.72	H	Peak
2408.0000	82.28	31.12	2.18	35.33	80.25	94.00	-13.75	H	AVG
4816.0000	44.15	34.01	2.58	34.65	46.09	74.00	-27.91	H	Peak
4816.0000	37.77	34.01	2.58	34.65	39.71	54.00	-14.29	H	AVG
7224.0000	40.15	36.16	2.97	35.07	44.21	74.00	-29.79	H	Peak
7224.0000	33.66	36.16	2.97	35.07	37.72	54.00	-16.28	H	AVG
9632.0000	*								
12040.0000	*								
14448.0000	*								
16856.0000	*								

Note:

1. Level = Receiver Read level + Antenna Factor + Cable Loss – Pre-amplifier Factor
2. "*" means the test results were attenuated more than 20dB below the permissible limits, so the results don't record in the report.

Test Mode: CH17 (Middle channel)									
Frequency (MHz)	Read Level (dBuV)	Antenna Factor (dB/m)	Cable Loss (dB)	Preamp Factor (dB)	Level (dBuV/m)	Limit (dBuV/m)	Over Limit (dB)	Pol.	Detector
2440.0000	92.12	31.12	2.20	34.51	90.93	114.00	-23.07	V	Peak
2440.0000	87.23	31.22	2.20	34.51	86.14	94.00	-7.86	V	AVG
4880.0000	47.21	34.98	2.49	34.14	50.54	74.00	-23.46	V	Peak
4880.0000	41.55	34.98	2.49	34.14	44.88	54.00	-9.12	V	AVG
7320.0000	38.66	36.01	3.01	34.56	43.12	74.00	-30.88	V	Peak
7320.0000	33.44	36.01	3.01	34.56	37.90	54.00	-16.10	V	AVG
9760.0000	*								
12200.0000	*								
14640.0000	*								
17080.0000	*								
2440.0000	89.12	31.12	2.20	34.51	87.93	114.00	-26.07	H	Peak
2440.0000	78.22	31.12	2.20	34.51	77.03	94.00	-16.97	H	AVG
4880.0000	42.63	34.98	2.49	34.14	45.96	74.00	-28.04	H	Peak
4880.0000	36.18	34.98	2.49	34.14	39.51	54.00	-14.49	H	AVG
7320.0000	38.71	36.01	3.01	34.56	43.17	74.00	-30.83	H	Peak
7320.0000	32.23	36.01	3.01	34.56	36.69	54.00	-17.31	H	AVG
9760.0000	*								
12200.0000	*								
14640.0000	*								
17080.0000	*								

Note:

1. Level = Receiver Read level + Antenna Factor + Cable Loss – Pre-amplifier Factor
2. "*" means the test results were attenuated more than 20dB below the permissible limits, so the results don't record in the report.

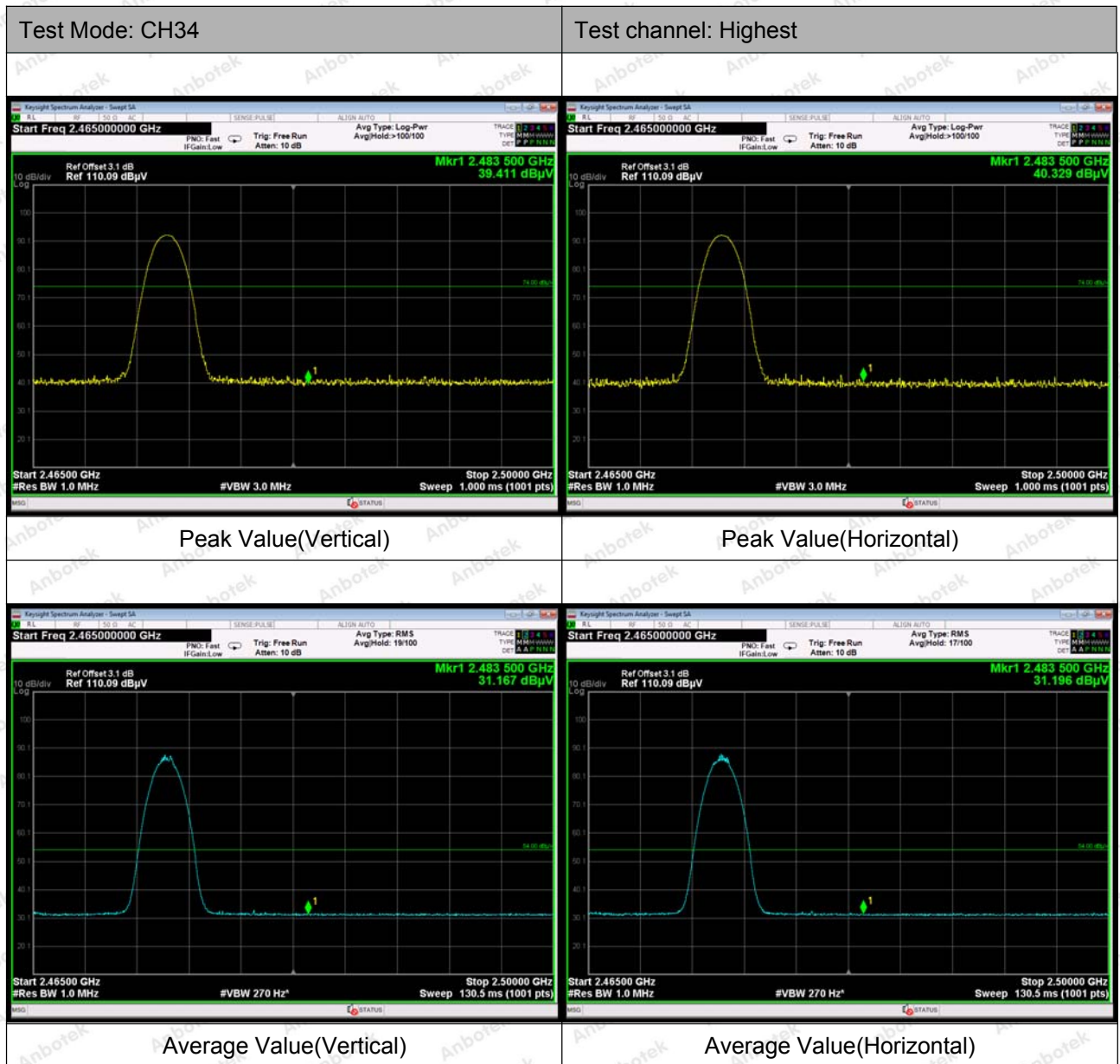
Test Mode: CH34(High channel)									
Frequency (MHz)	Read Level (dBuV)	Antenna Factor (dB/m)	Cable Loss (dB)	Preamp Factor (dB)	Level (dBuV/m)	Limit (dBuV/m)	Over Limit (dB)	Pol.	Detector
2474.0000	96.15	31.65	2.23	36.07	93.96	114.00	-20.04	V	Peak
2474.0000	84.96	31.65	2.23	36.07	82.77	94.00	-11.23	V	AVG
4948.0000	50.03	35.06	2.60	34.93	52.76	74.00	-21.24	V	Peak
4948.0000	41.69	35.06	2.60	34.93	44.42	54.00	-9.58	V	AVG
7422.0000	37.39	36.19	3.12	35.11	41.59	74.00	-32.41	V	Peak
7422.0000	33.12	36.19	3.12	35.11	37.32	54.00	-16.68	V	AVG
9896.0000	*								
12370.0000	*								
14844.0000	*								
17318.0000	*								
2474.0000	91.25	31.65	2.23	36.07	89.06	114.00	-24.94	H	Peak
2474.0000	73.63	31.65	2.23	36.07	71.44	94.00	-22.56	H	AVG
4948.0000	44.11	35.06	2.60	34.93	46.84	74.00	-27.16	H	Peak
4948.0000	37.44	35.06	2.60	34.93	40.17	54.00	-13.83	H	AVG
7422.0000	42.91	36.19	3.12	35.11	47.11	74.00	-26.89	H	Peak
7422.0000	34.12	36.19	3.12	35.11	38.32	54.00	-15.68	H	AVG
9896.0000	*								
12370.0000	*								
14844.0000	*								
17318.0000	*								

Note:

1. Level =Receiver Read level + Antenna Factor + Cable Loss – Preamplifier Factor
2. "*" means the test results were attenuated more than 20dB below the permissible limits, so the results don't record in the report.

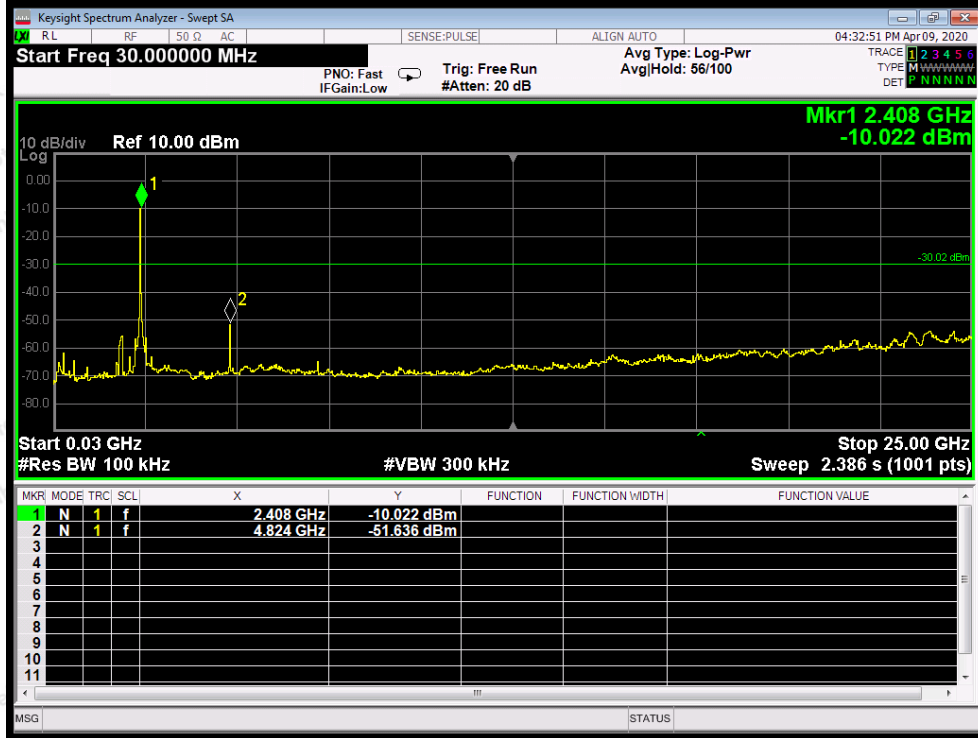
Radiated Band Edge:



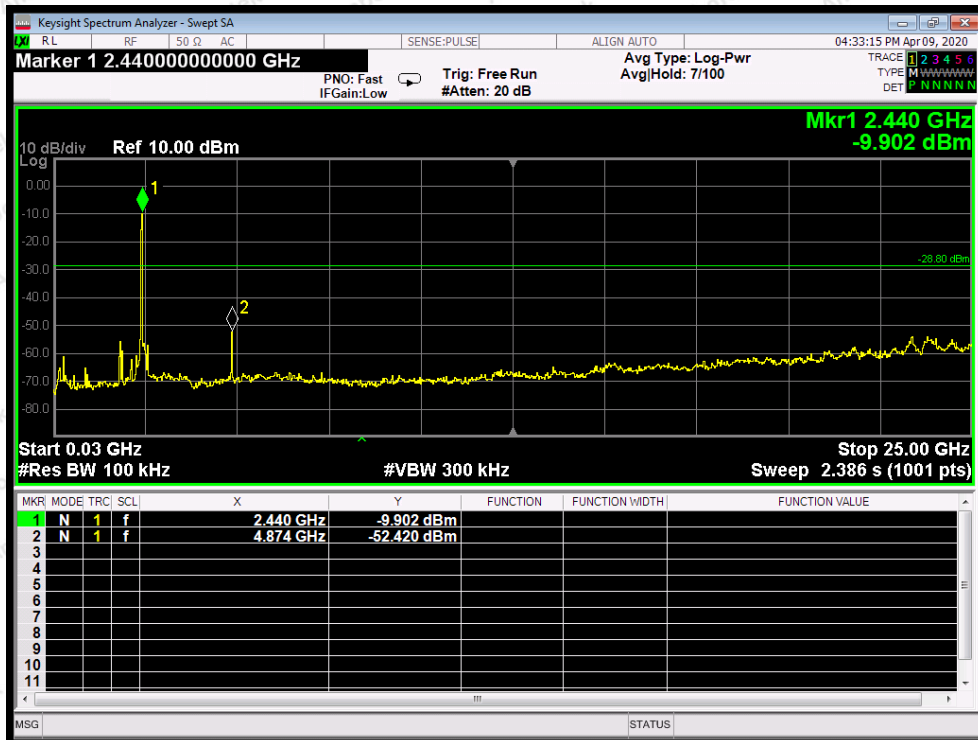


Remark:

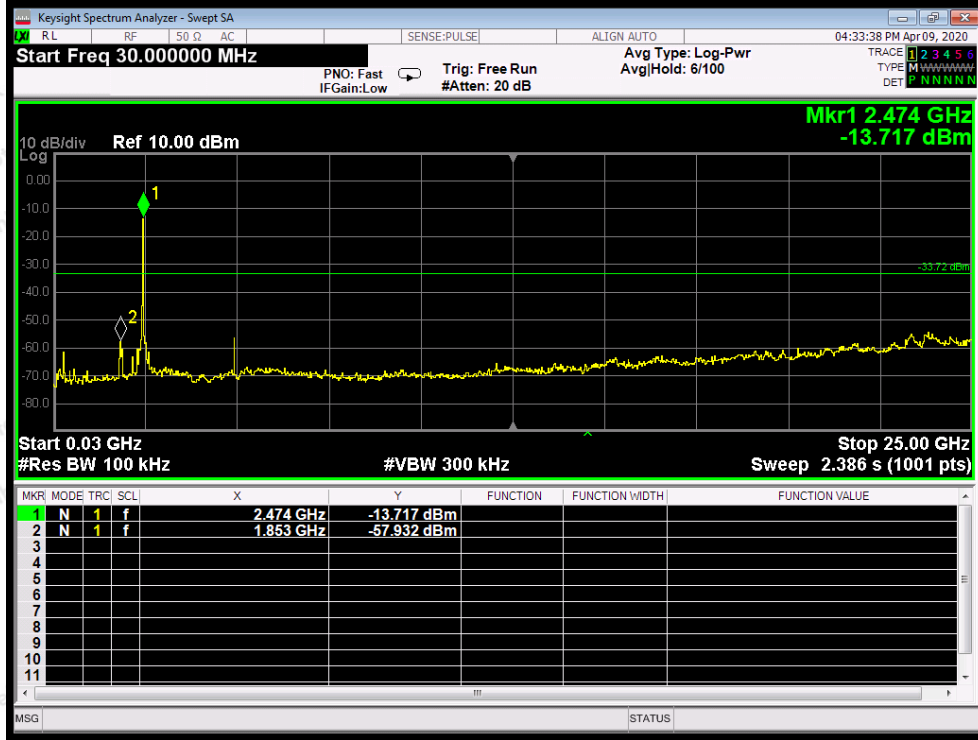
1. Level =Receiver Read level + Antenna Factor + Cable Loss – Pre-amplifier Factor



CH: Low



CH: Middle



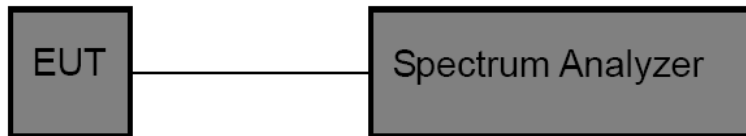
CH: High

5. 20dB Bandwidth Test

5.1. Test Standard and Limit

Test Standard	FCC Part15 C Section 15.249
---------------	-----------------------------

5.2. Test Setup



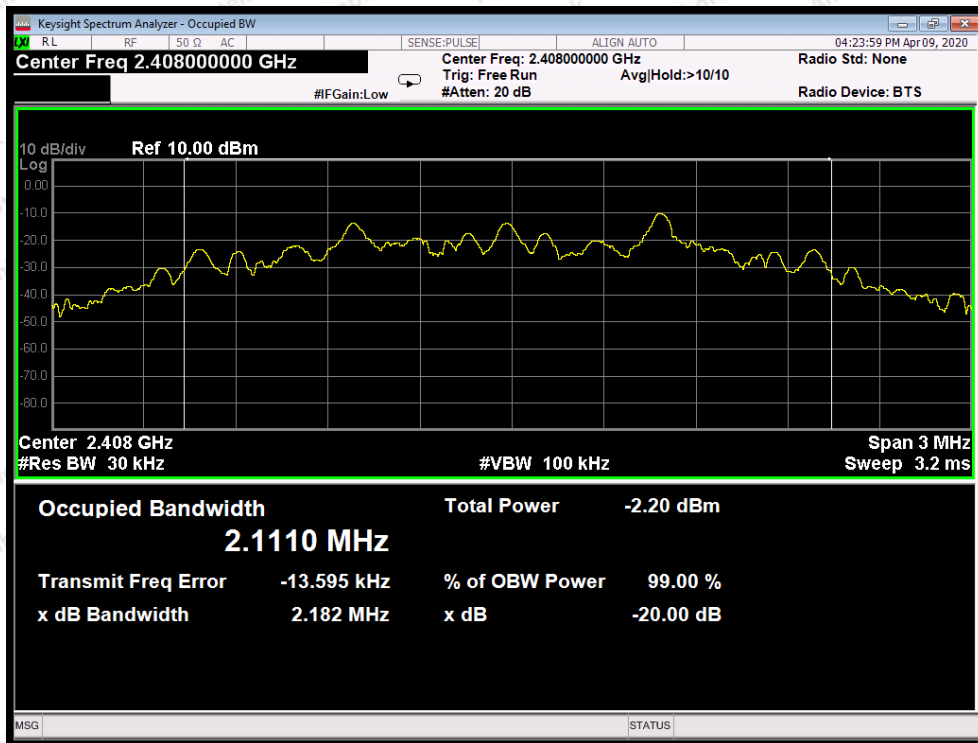
5.3. Test Procedure

1. Place the EUT on the table and set it in the transmitting mode.
2. Remove the antenna from the EUT and then connect a low loss RF cable from the antenna port to the spectrum analyzer.
3. Set the spectrum analyzer as:
 RBW = 30kHz, VBW ≥ 3 * RBW = 100kHz,
 Detector = Average
 Trace mode = Max hold.
 Sweep = auto couple.
4. Mark the peak frequency and -20dB (upper and lower) frequency.
5. Repeat until all the rest channels are investigated.

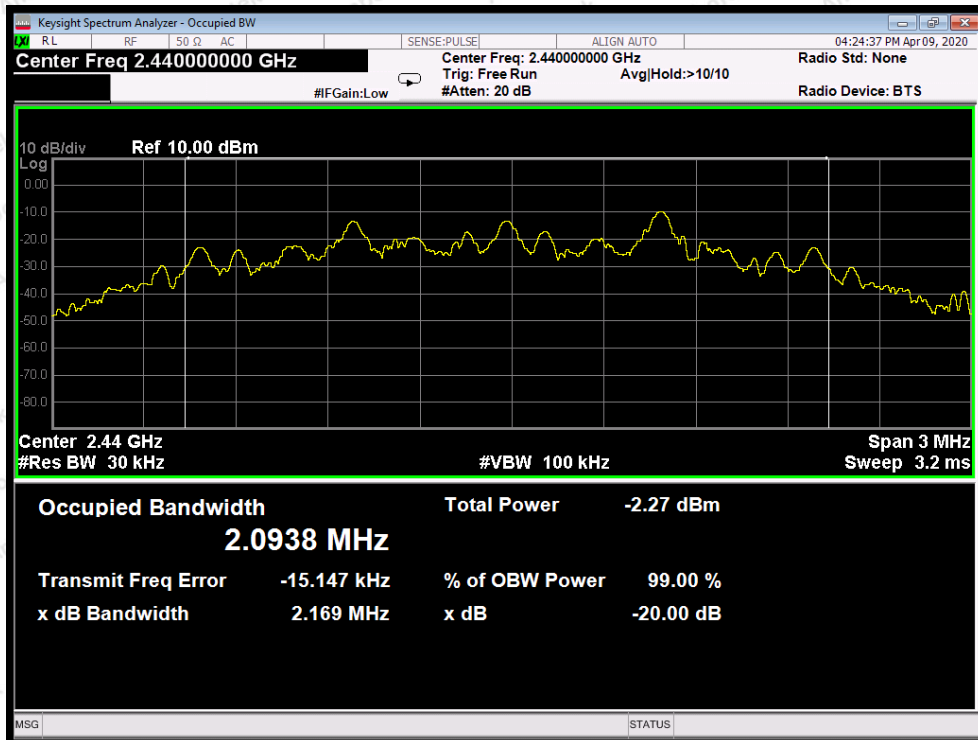
5.4. Test Data

Test Item	: 20dB Bandwidth	Test Mode	: Mode 1
Test Voltage	: DC 1.5V battery inside	Temperature	: 22.4°C
Test Result	: PASS	Humidity	: 55%RH

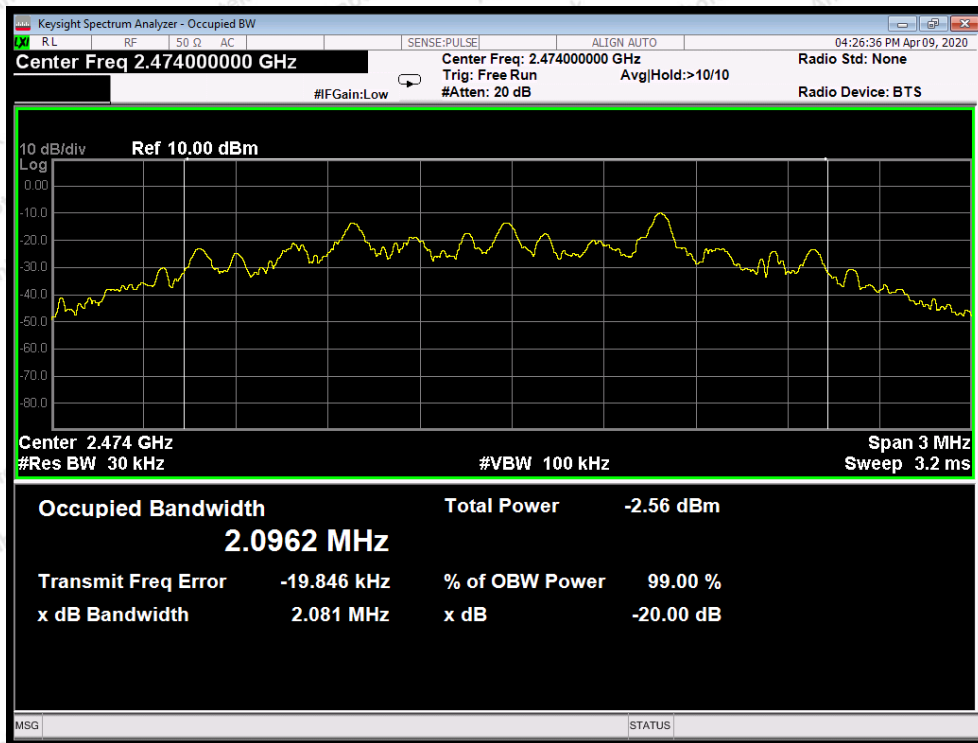
Frequency (MHz)	Bandwidth (kHz)	Result
2408MHZ	2182	PASS
2440MHZ	2169	PASS
2474MHZ	2081	PASS



Test Mode: Low



Test Mode: Middle



Test Mode: High

6. Antenna Requirement

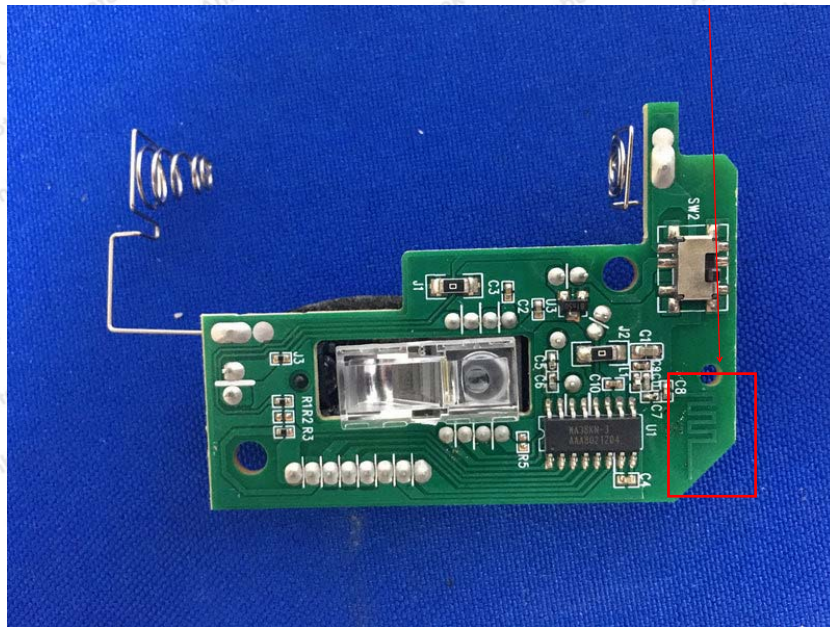
6.1. Test Standard and Requirement

Test Standard	FCC Part15 Section 15.203
Requirement	<p>1) 15.203 requirement: An intentional radiator shall be designed to ensure that no antenna other than that furnished by the responsible party shall be used with the device. The use of a permanently attached antenna or of an antenna that uses a unique coupling to the intentional radiator, the manufacturer may design the unit so that a broken antenna can be replaced by the user, but the use of a standard antenna jack or electrical connector is prohibited.</p>

6.2. Antenna Connected Construction

The antenna is a PCB Antenna which permanently attached, and the best case gain of the antenna is -2 dBi. It complies with the standard requirement.

2.4G Antenna

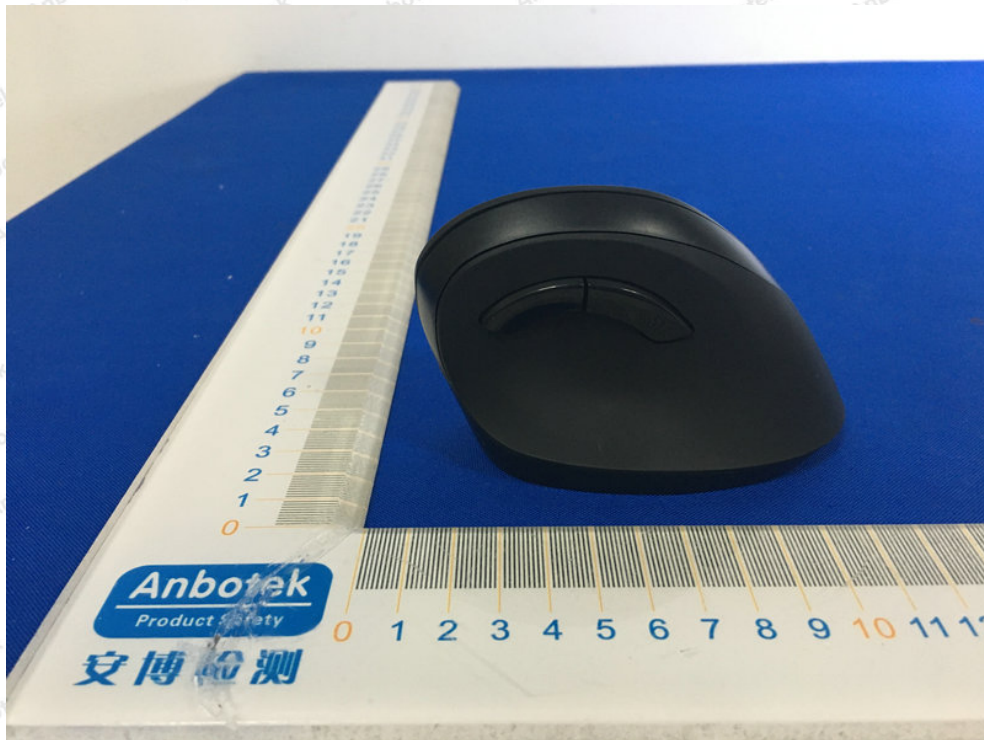


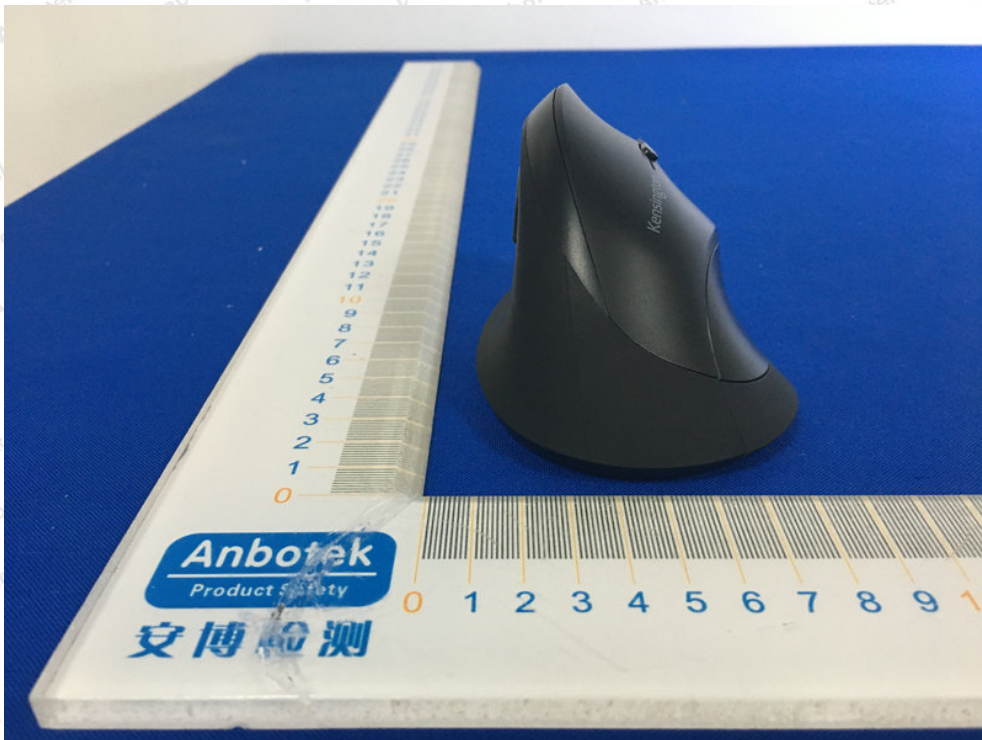
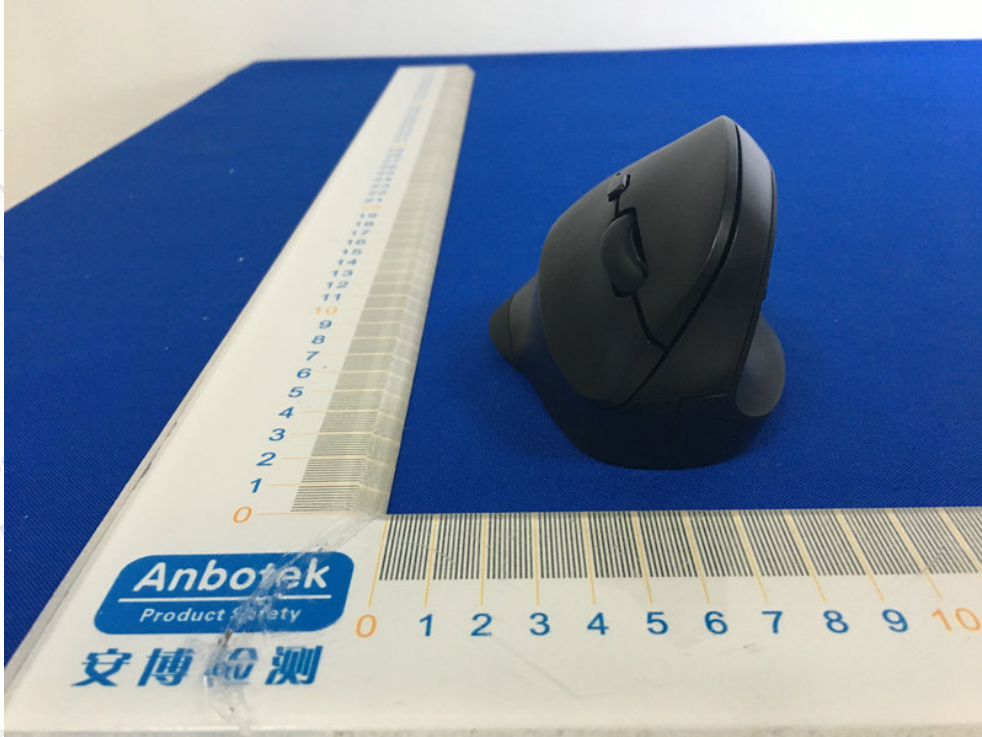
APPENDIX I -- TEST SETUP PHOTOGRAPH

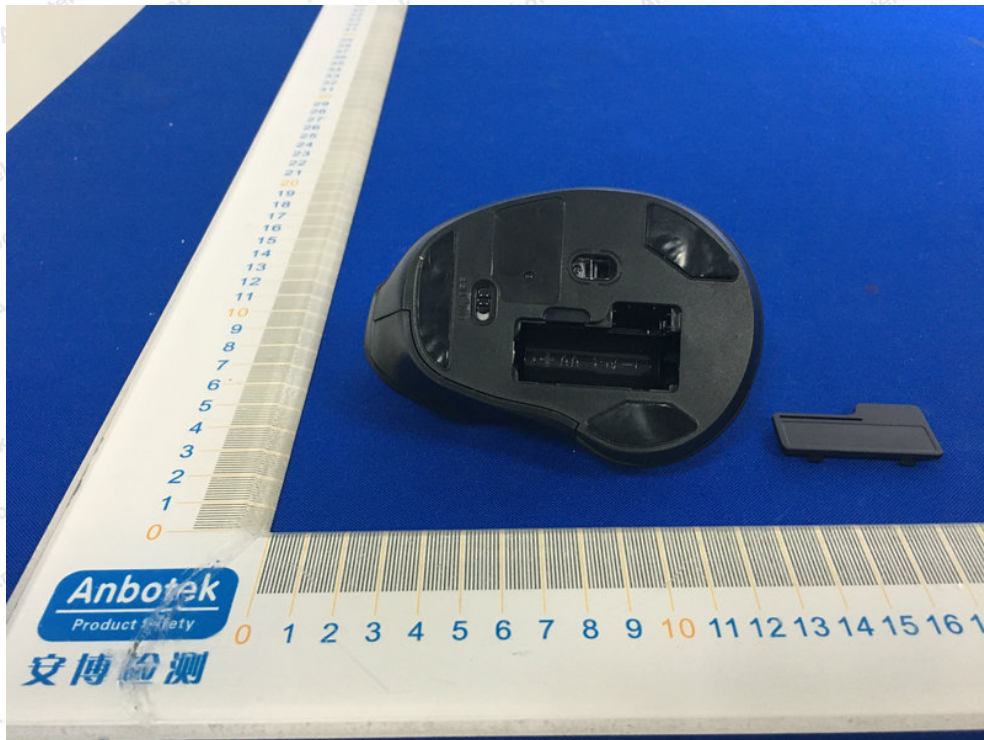
Photo of Radiation Emission Test



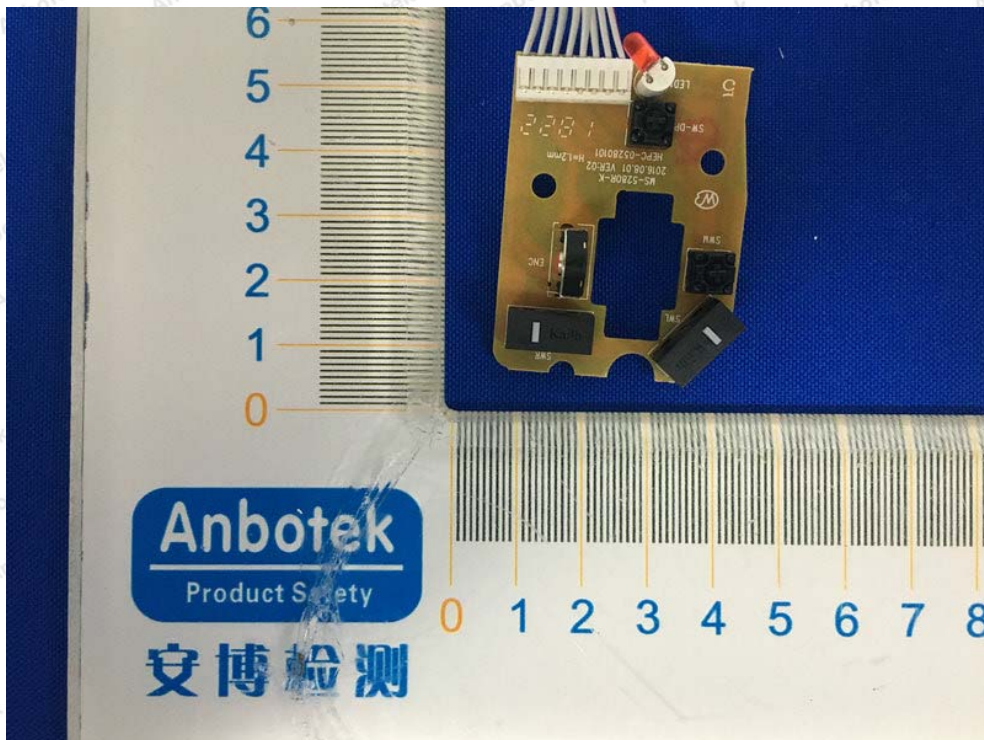
APPENDIX II -- EXTERNAL PHOTOGRAPH

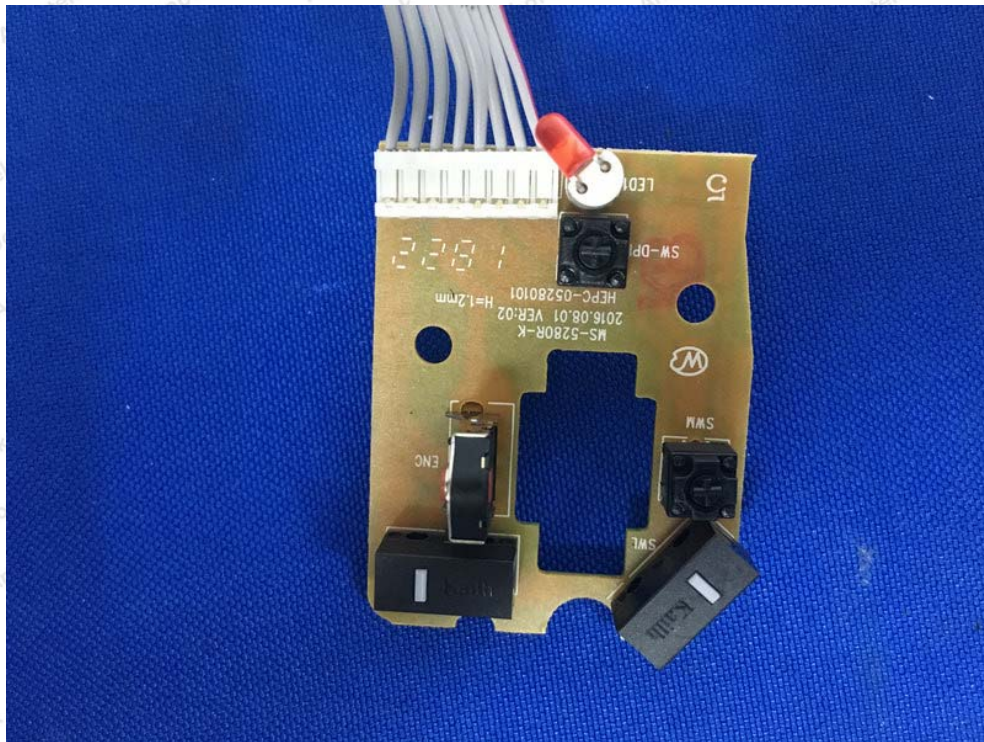
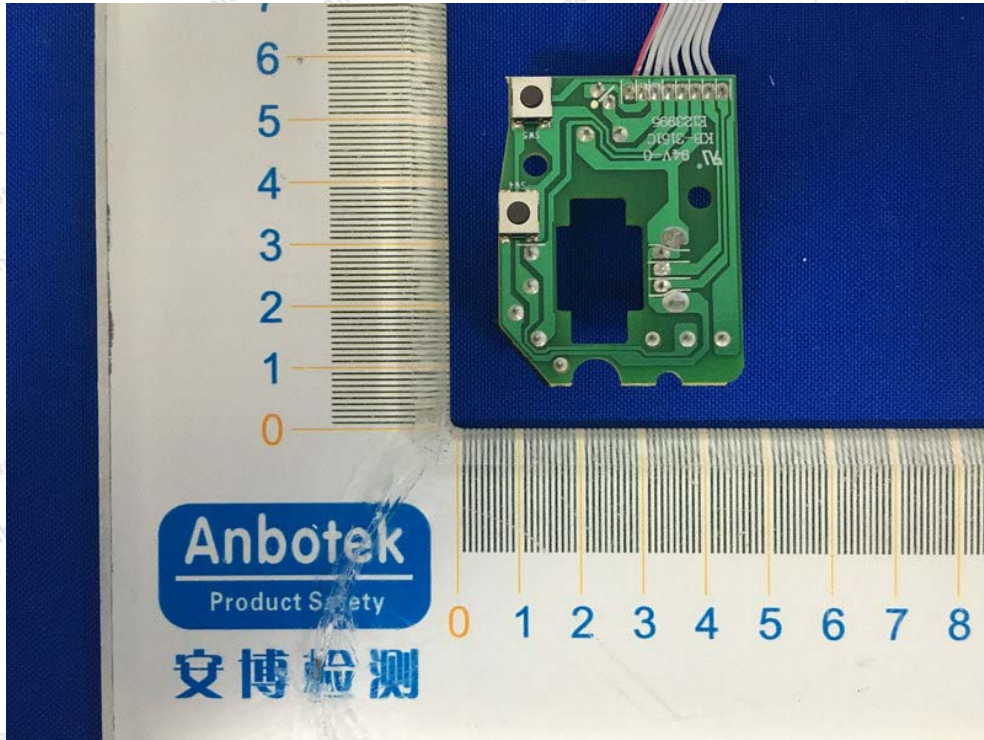


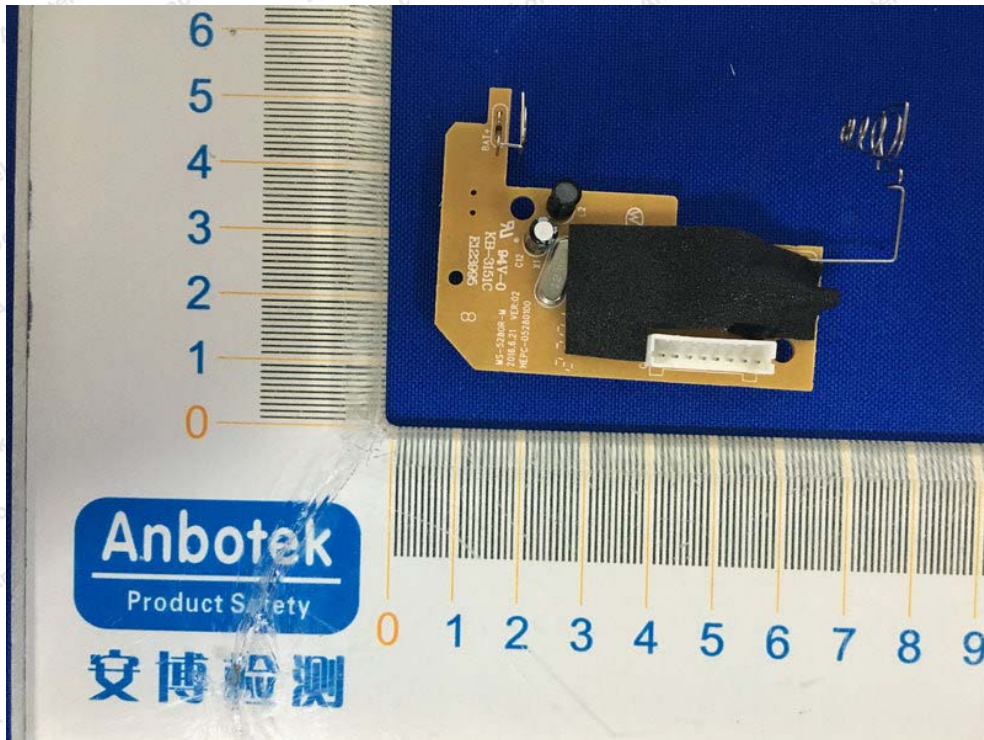
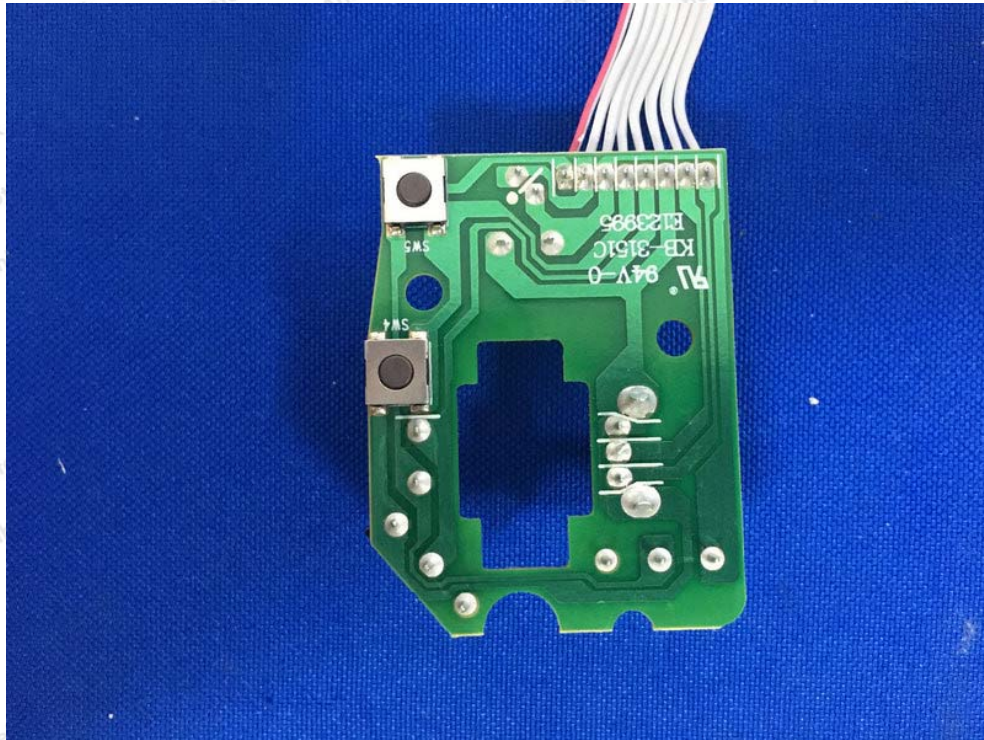


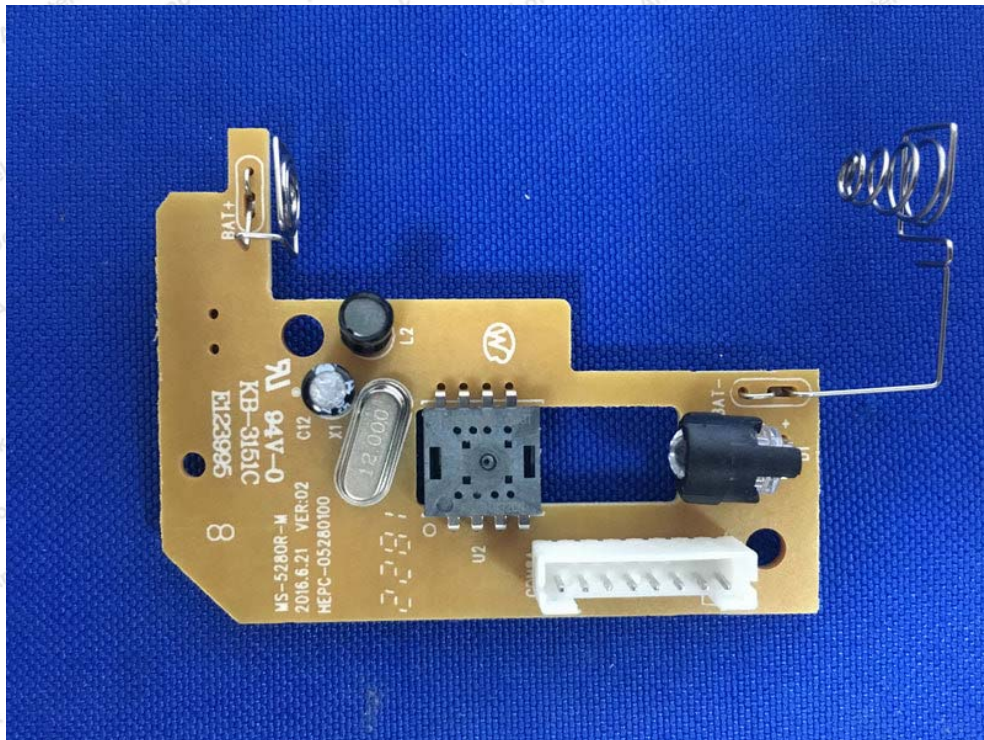
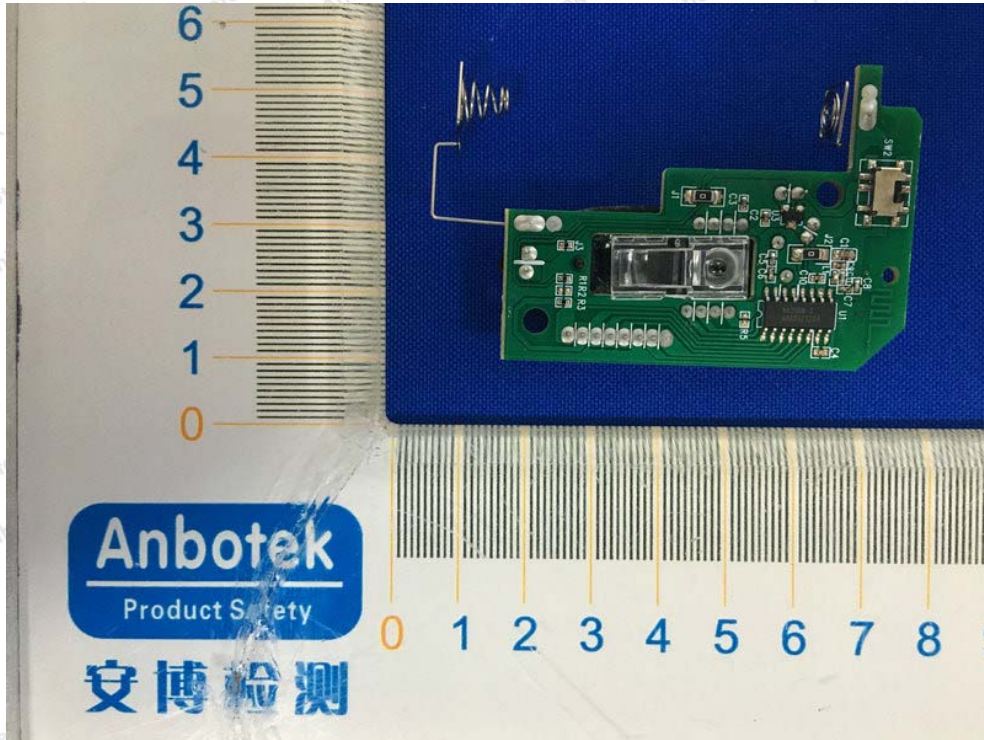


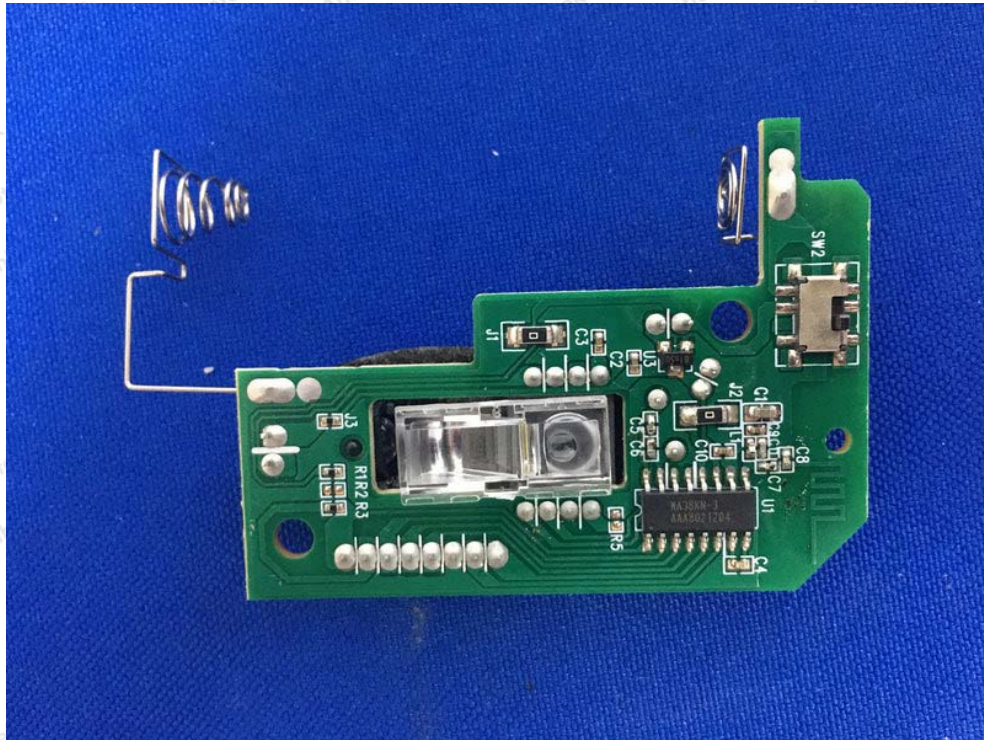
APPENDIX III -- INTERNAL PHOTOGRAPH











----- End of Report -----