

Contents

- A. Mouse
- B. 2 AA Batteries
- C. Mouse Driver Software CD
- D. Quick Start Guide
- E. Instruction Guide

Components

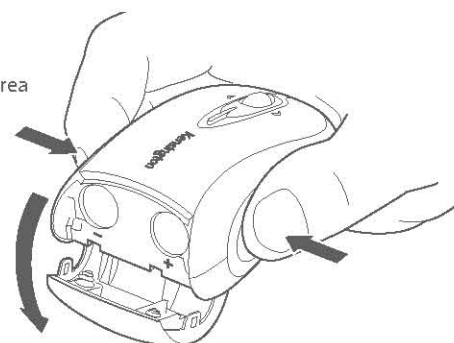
- F. Tilt/Scroll Wheel
- G. On/Off Switch
- H. Discover Button
- I. Indicator Light

System Requirements

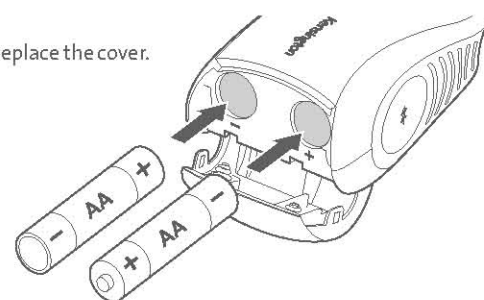
- Windows: Windows XP or later
- Mac: Mac OS 10.3.9 or later

Set Up Your Mouse

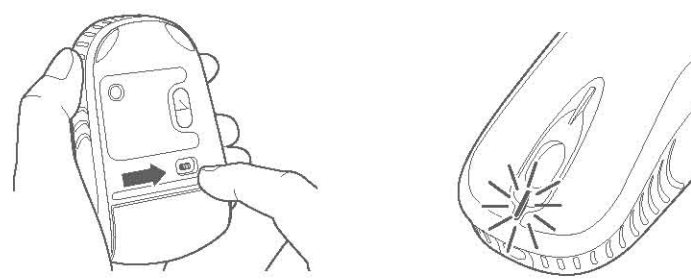
1. Insert the batteries.
 - a. Press battery cover release area on sides of mouse.



- b. Insert batteries, then replace the cover.



2. Turn on the mouse. The indicator light stays solid green for five seconds.



After you set up your mouse, you connect your mouse and your computer. The steps are different for different Bluetooth versions:

- If you have a Mac computer with OS 10.3.9 or later, you have the Mac Bluetooth version.
- If you have a Windows computer and the <BT ICON> appears in the system tray, you have the Widcomm or Microsoft Bluetooth version.
- If you have a Windows computer and the <ANTENNA ICON> appears in the system tray, you have the Toshiba Bluetooth version.

NOTE: No <BT ICON> or <ANTENNA ICON>? Go to http://bluetooth.com/Bluetooth/Connect/Devices/Finding_Your_Bluetooth_PC_Stack.html for instructions on finding your Bluetooth version.

Widcomm

1. Double-click <BT ICON> located on your desktop or at the bottom of the screen.
2. Click **Bluetooth Setup Wizard**.

1. On your mouse, press the **Connect** button. The indicator light on the mouse blinks blue.
2. Select **I want to find a specific Bluetooth device and configure how this computer will use its services and click Next**.

3. On the **Bluetooth Device Selection** screen, double-click **Si670m Mouse**.

4. Using your Si670 mouse, click to confirm selection of the mouse. The indicator light on the mouse stays solid blue for three seconds and then goes off.

5. Select the **Si670m Mouse** on the **Bluetooth Device Selection** screen and click **Next**. Wait for your computer screen to display a message that the mouse is ready for use.

Toshiba

1. Double-click <ANTENNA ICON> located at the bottom of the screen.
2. Click **New Connection**.

3. Select **Express Mode** and click **Next**.

4. On your mouse, press the **Connect** button. The indicator light on the mouse blinks blue.
5. When a screen appears asking you to select a device, click **Refresh**.
6. Select **Express** and click **Next**.

7. If a screen appears asking for a passkey, click **OK**.

8. When the **Bluetooth Settings** screen appears, click **OK**.

9. (Optional) Enter a name and/or select an icon for your mouse. Click **Next**.

10. The indicator light blinks blue. Select the mouse on your computer screen, and then click **Next**.
11. If prompted to connect to Windows Update, click **No**.
12. Follow the onscreen instructions to finish connecting. Click **Finish**.

Microsoft

1. Double-click <BT ICON> located at the bottom of the screen.
2. Select **Add Bluetooth Device**.

3. Select **My device is set up and ready to be found** and click **Next**.

4. The indicator light on the mouse blinks blue. Select the mouse on your computer screen, and then click **Next**.
5. The indicator light on the mouse stays solid blue for three seconds. Select the mouse on your computer screen, and then click **Next**.

6. Select **Don't use a passkey** and click **Next**.

7. Click **Finish**.

Mac

1. Click <BT ICON> located in the top-left corner of the screen.
2. Click **System Preferences**, then click <BT ICON>.

3. Click **Set Up New Devices**.

4. Click **Continue**.

5. Select **Mouse** from the device list, and click **Continue**.

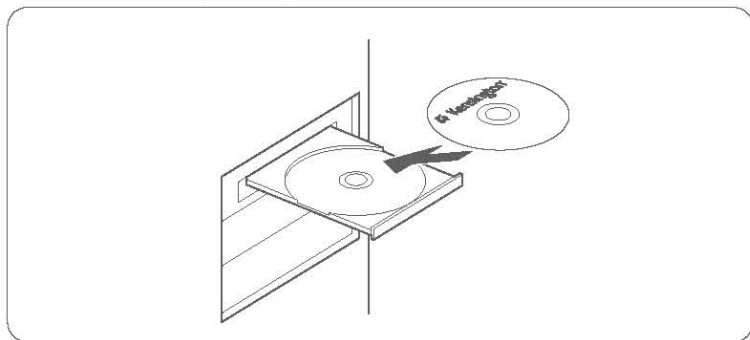
1. The indicator light on the mouse blinks blue. Kensington Si670 Mouse appears on your computer screen. Click **Continue**.
2. The indicator light on the mouse blinks blue. Kensington Si670 Mouse appears on your computer screen. Click **Continue**.

3. On the **Conclusion** screen, click **Quit**.

Install the Mouse Driver Software

The tilt-wheel functionality enables you to scroll horizontally onscreen using your mouse. If you are using a Mac computer or a Windows computer running the Vista operating system, the tilt-wheel functionality works automatically. If you are using a Windows computer running the XP operating system, follow these steps to install the tilt-wheel software.

1. Insert the CD into your computer's drive.



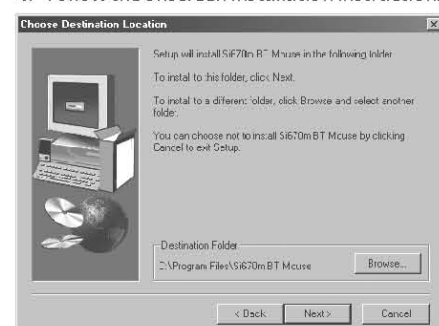
2. Select the language you want to use, and click Next.



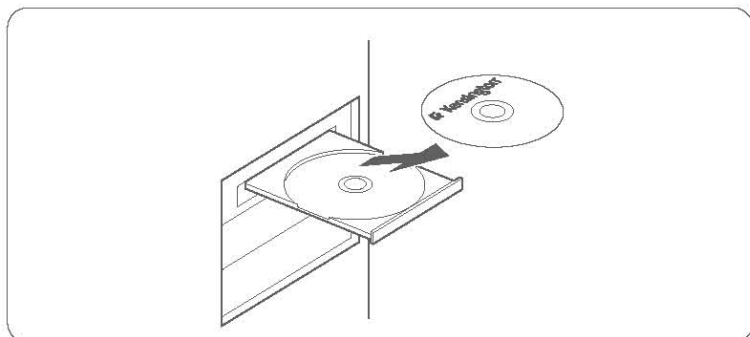
3. Exit all applications and click Next.



4. Follow the onscreen installation instructions.



5. When installation is complete, remove the CD from your computer's drive and click Re-start my computer.



Your mouse is now ready to use with the tilt-wheel functionality.

Troubleshooting

- Make sure to use fresh batteries and to insert them correctly into the mouse.
- Make sure that your computer's Bluetooth technology is turned on.
- Try moving the mouse closer to the computer.
- Make sure that there are no other Bluetooth devices in discover mode.
- On a Windows computer, refer to the Bluetooth software help guide to ensure that Bluetooth is working properly. The computer must be running a version of Bluetooth for Windows XP that supports input devices (mice and keyboards).
- On a Mac computer, click the Bluetooth icon on the System Preferences screen. Refer to the Apple Bluetooth help file to ensure Bluetooth is working properly.

Technical Support

Technical support is available to all registered users of Kensington products.

Web Support

You may find the answer to your problem in the Frequently Asked Questions (FAQ) section of the Support area on the Kensington Website:

www.support.kensington.com.

Technical Support

There is no charge for technical support except long-distance charges where applicable. Please visit www.kensington.com for telephone support hours. In Europe, technical support is available by telephone Monday to Friday 09:00 to 21:00 (Central European time).

Please note the following when calling support:

- Call from a phone where you have access to your mouse.
- Be prepared to provide the following information:
 - Name, address, and telephone number
 - Name of the Kensington product
 - Make and model of your computer
 - System software and version
 - Symptoms of the problem and what led to them

LIMITED WARRANTY

KENSINGTON COMPUTER PRODUCTS GROUP ("KENSINGTON") warrants Bluetooth Mouse against defects in material and workmanship under normal use and service for five years from the original date of purchase. KENSINGTON, at its sole option, shall repair or replace the defective unit covered by this warranty. Please retain the dated sales receipt as evidence of the date of purchase. You will need it for any warranty service. In order to keep this warranty in effect, the product must have been handled and used as presented in the instructions accompanying this warranty. This warranty does not cover any damage due to accident, misuse, abuse, or negligence.

DISCLAIMER OF WARRANTY

EXCEPT FOR THE LIMITED WARRANTY PROVIDED HEREIN, TO THE EXTENT PERMITTED BY LAW, KENSINGTON DISCLAIMS ALL OTHER IMPLIED OR EXPRESS WARRANTIES INCLUDING ALL WARRANTIES OF MERCHANTABILITY AND/OR FITNESS FOR A PARTICULAR PURPOSE. TO THE EXTENT THAT ANY IMPLIED WARRANTIES MAY NOT BE EXCLUDED BY OPERATION OF LAW, ANY SUCH WARRANTIES ARE LIMITED TO THE FIVE-YEAR DURATION OF THIS WARRANTY. SOME STATES/PROVINCES DO NOT ALLOW LIMITATIONS ON HOW LONG AN IMPLIED WARRANTY LASTS, SO THE ABOVE LIMITATIONS MAY NOT APPLY TO YOU.

LIMITATION OF LIABILITY

REPAIR OR REPLACEMENT OF THIS PRODUCT, AS PROVIDED HEREIN, IS YOUR EXCLUSIVE REMEDY. KENSINGTON SHALL NOT BE LIABLE FOR ANY DAMAGES, WHETHER DIRECT, INDIRECT, INCIDENTAL, SPECIAL, CONSEQUENTIAL, EXEMPLARY, OR OTHERWISE, INCLUDING LOST REVENUES, LOST PROFITS, LOSS OF USE OF SOFTWARE, LOSS OR RECOVERY OF DATA, RENTAL OF REPLACEMENT EQUIPMENT, DOWNTIME, DAMAGE TO PROPERTY, AND THIRD-PARTY CLAIMS, ARISING OUT OF ANY THEORY OF RECOVERY, INCLUDING STATUTORY, CONTRACT, OR TORT. NOTWITHSTANDING THE TERM OF ANY LIMITED OR IMPLIED WARRANTY, OR IN THE EVENT THAT ANY LIMITED WARRANTY FAILS OF ITS ESSENTIAL PURPOSE, IN NO EVENT WILL KENSINGTON'S ENTIRE LIABILITY EXCEED THE PURCHASE PRICE OF THIS PRODUCT. SOME STATES AND PROVINCES DO NOT ALLOW THE EXCLUSION OR LIMITATION OF INCIDENTAL OR CONSEQUENTIAL DAMAGES, SO THE ABOVE LIMITATIONS OR EXCLUSIONS MAY NOT APPLY TO YOU. THIS LIMITED WARRANTY GIVES YOU SPECIFIC LEGAL RIGHTS, AND YOU MAY ALSO HAVE OTHER RIGHTS WHICH VARY FROM STATE TO STATE AND PROVINCE TO PROVINCE.

Federal Communication Commission Interference Statement

This equipment has been tested and found to comply with the limits for a Class B digital device, pursuant to Part 15 of the FCC Rules.

These limits are designed to provide reasonable protection against harmful interference in a residential installation. This equipment generates, uses and can radiate radio frequency energy and, if not installed and used in accordance with the instructions, may cause harmful interference to radio communications. However, there is no guarantee that interference will not occur in a particular installation. If this equipment does cause harmful interference to radio or television reception, which can be determined by turning the equipment off and on, the user is encouraged to try to correct the interference by one of the following measures:

- Reorient or relocate the receiving antenna.
- Increase the separation between the equipment and receiver.
- Connect the equipment into an outlet on a circuit different from that to which the receiver is connected.
- Consult the dealer or an experienced radio/TV technician for help.

This device complies with Part 15 of the FCC Rules. Operation is subject to the following two conditions:

- (1) This device may not cause harmful interference, and
- (2) This device must accept any interference received, including interference that may cause undesired operation.

Modifications: Any changes or modifications not expressly approved by Kensington could void the user's authority to operate the equipment.

A copy of the Declaration of Conformity may be obtained at www.support.kensington.com.

IMPORTANT NOTE:

FCC Radiation Exposure Statement:

This equipment complies with FCC radiation exposure limits set forth for an uncontrolled environment. End users must follow the specific operating instructions for satisfying RF exposure compliance. This transmitter must not be co-located or operating in conjunction with any other antenna or transmitter.

DECLARATION OF CONFORMITY

Kensington declares that this product is in compliance with the essential requirements and other relevant provisions of R&TE Directive 1999/5/EC, EMC Directive 89/36/EEC, and Low Voltage Directive 73/23/EEC. For Europe, a copy of the Declaration of Conformity for this product may be obtained by clicking on the 'Compliance Documentation' link at www.support.kensington.com.

SAFETY AND USAGE GUIDELINES

1. In the absence of proper operation and if customer-initiated troubleshooting is unsuccessful, switch off the device and call Kensington technical support.
2. Do not disassemble this product or expose it to liquid, humidity, moisture, or temperatures outside the specified operating ranges of 0 deg C (32 deg F) to 40 deg C (104 deg F).
3. If your product is exposed to out-of-range temperatures, switch it off and allow temperature to return to the normal operating range.

INFORMATION FOR EU MEMBER STATES ONLY

The use of the symbol indicates that this product may not be treated as household waste. By ensuring this product is disposed of correctly, you will help prevent potential negative consequences for the environment and human health, which could otherwise be caused by inappropriate waste handling of this product. For more detailed information about recycling of this product, please contact your local city office, your household waste disposal service, or the shop where you purchased the product.

© 2006 Kensington Computer Products Group, a division of ACCO Brands USALLC. Any unauthorized copying, duplicating, or other reproduction of the contents hereof is prohibited without written consent from Kensington Computer Products Group. All rights reserved. 10/06.

 The Kensington Promise™	For technical support visit four (4) support technique websites visit: www.kensington.com			
 Kensington Computer Products Group A Division of ACCO Brands 393 Twin Dolphin Drive Redwood Shores, CA 94065 Designed in California, U.S.A. by Kensington Made in China	ACCO Brands Europe Oxford Road Aylesbury Bucks, HP21 8SZ United Kingdom	ACCO Canada Inc. 5 Preddie Court Brampton Ontario L6S 6B7 Canada	ACCO Australia Level 2, 8 Lord St Botany NSW 2019 PO Box 311 Rosebery NSW 1445 Australia	www.kensington.com