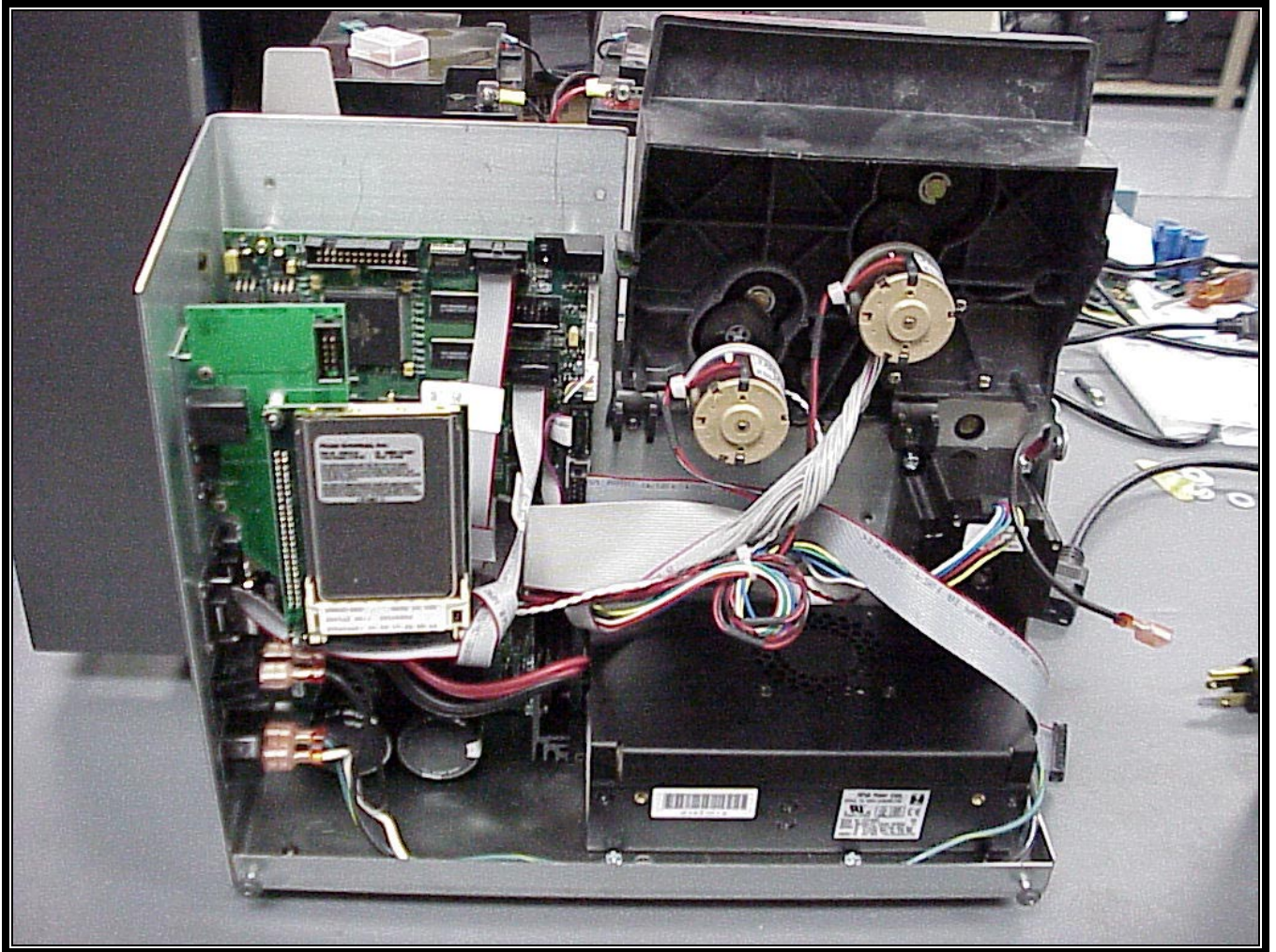
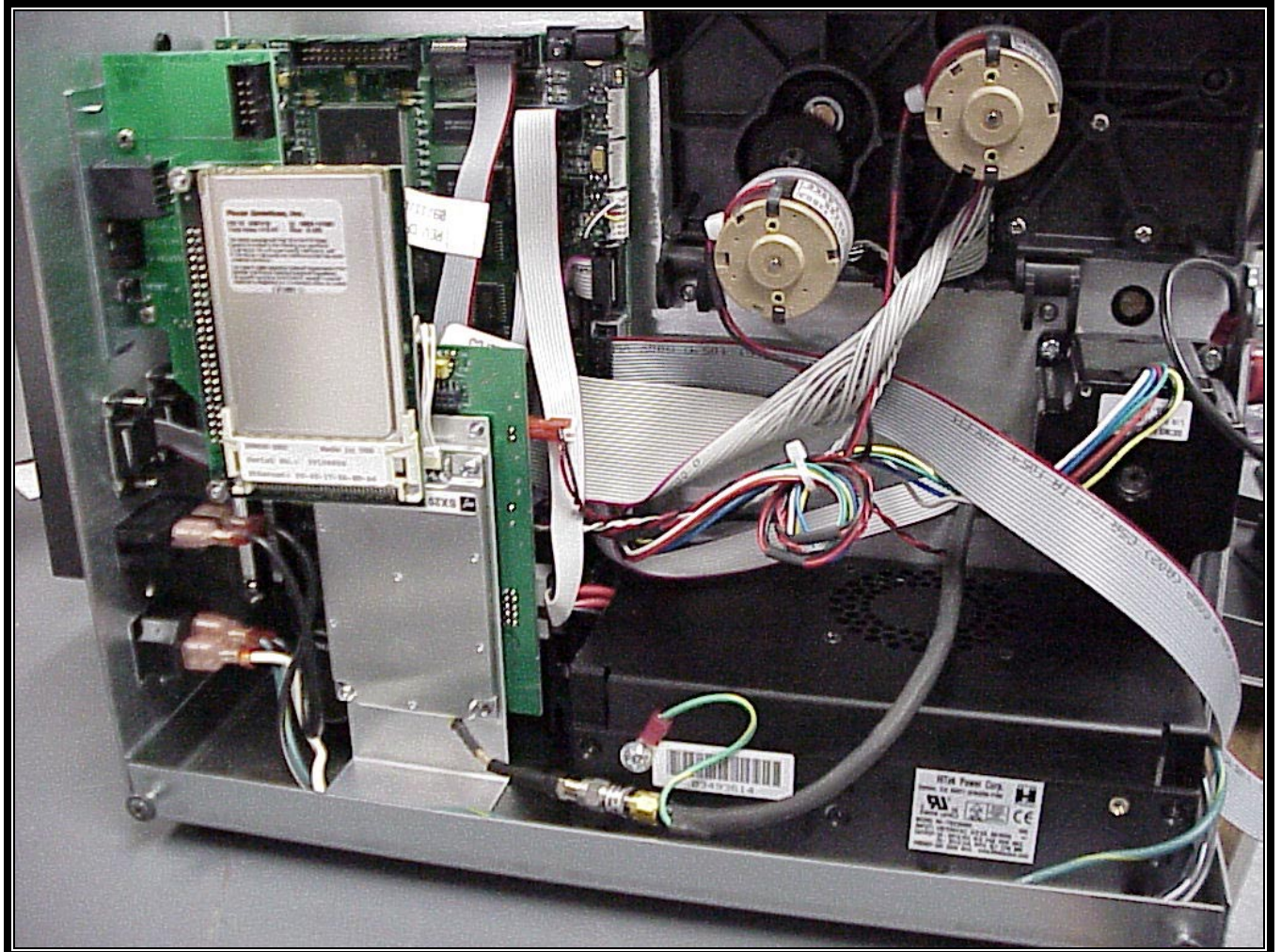


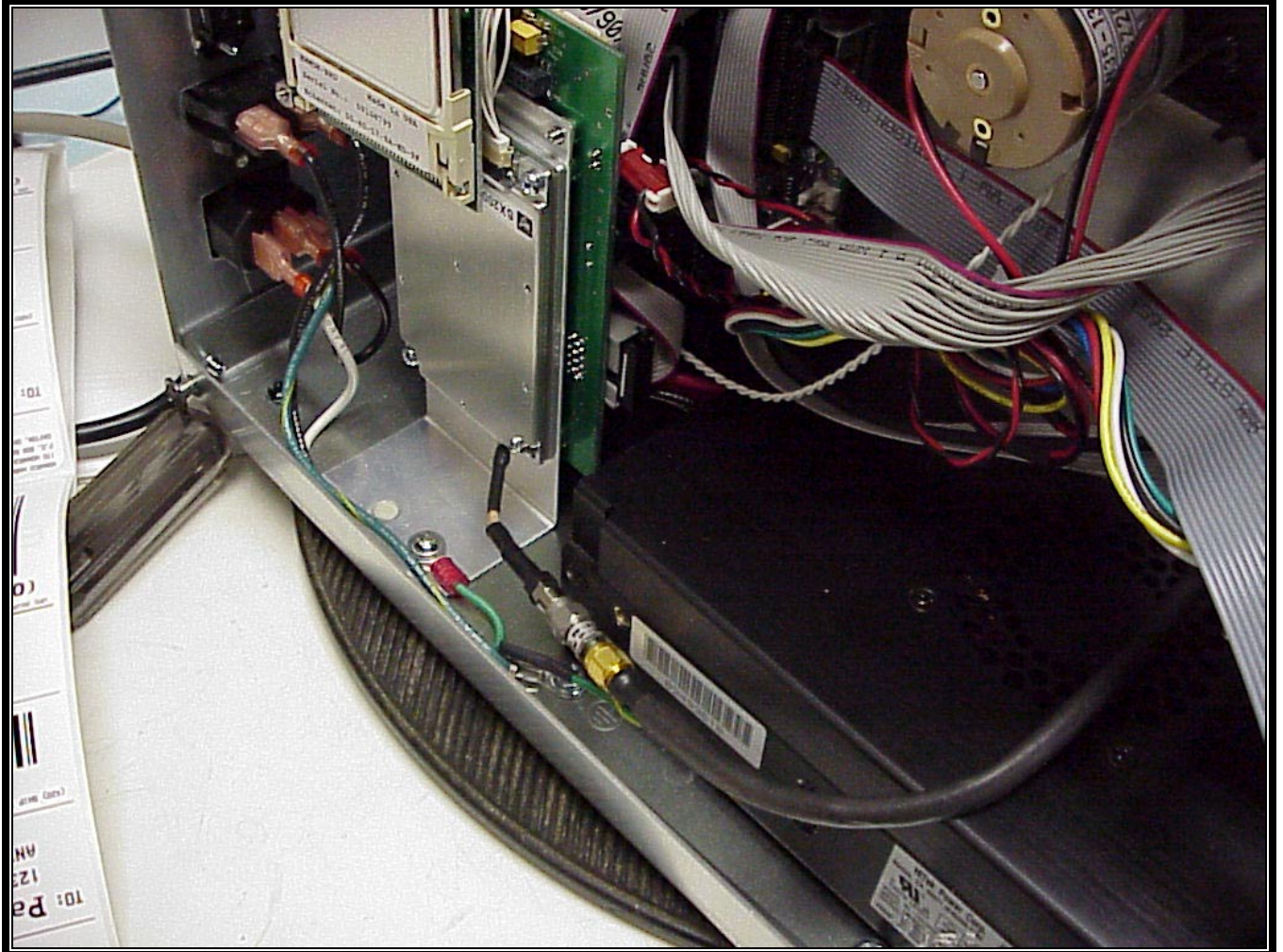
APPENDIX L: INTERNAL PHOTOGRAPHS



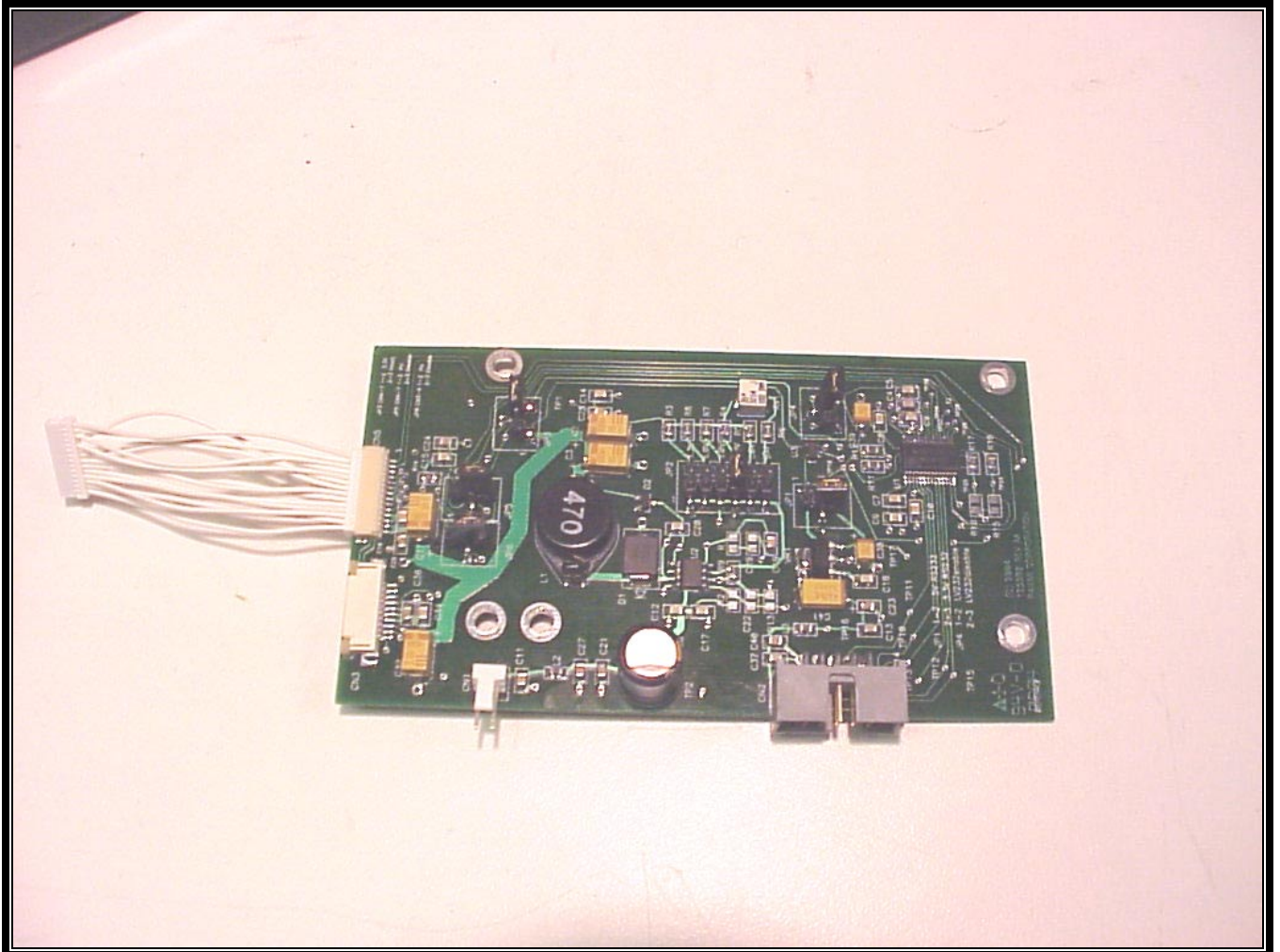
PHOTOGRAPH 10: PRINTER BEFORE EUT INSTALLED



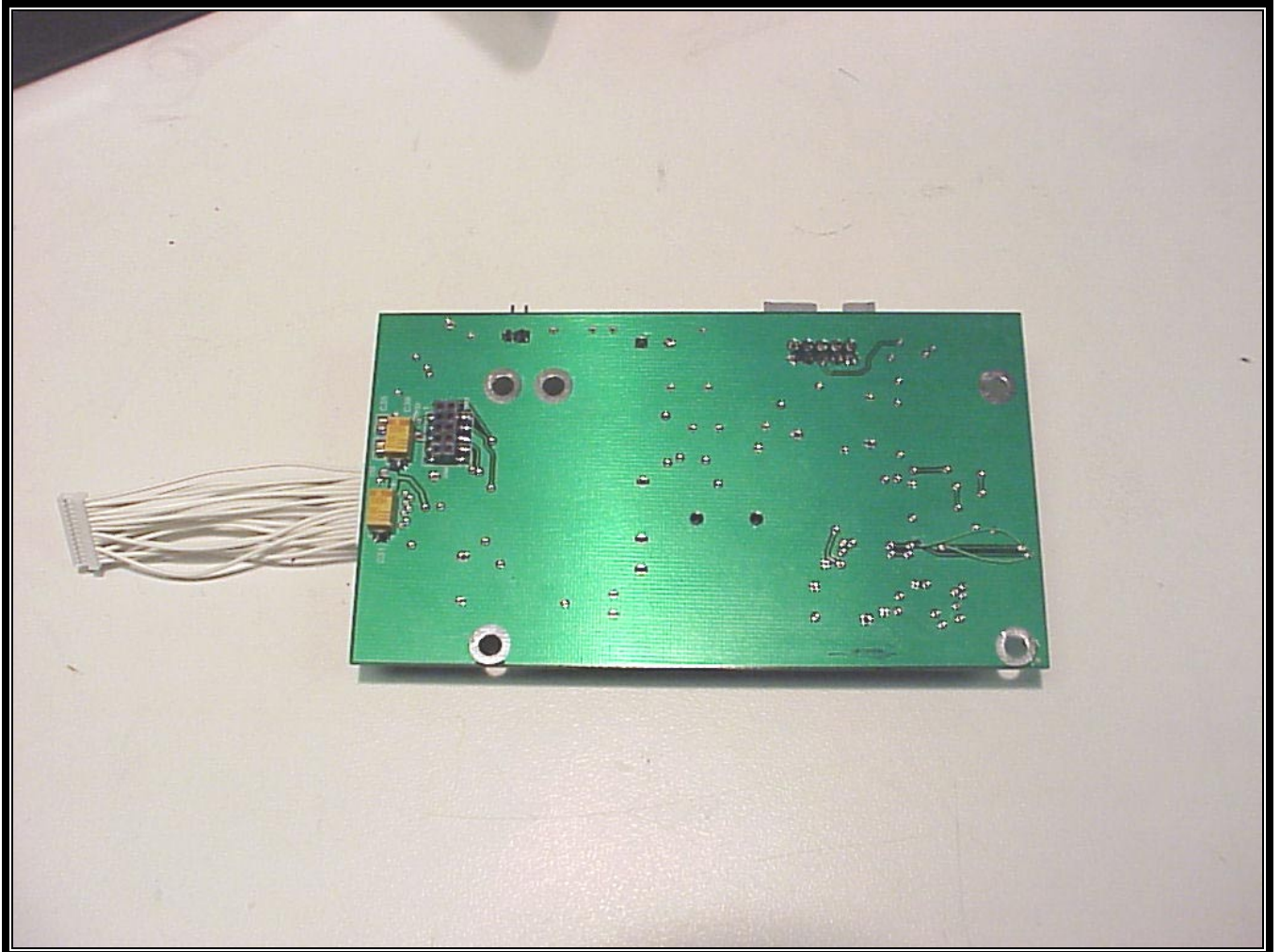
PHOTOGRAPH 11: EUT INSTALLED IN PRINTER



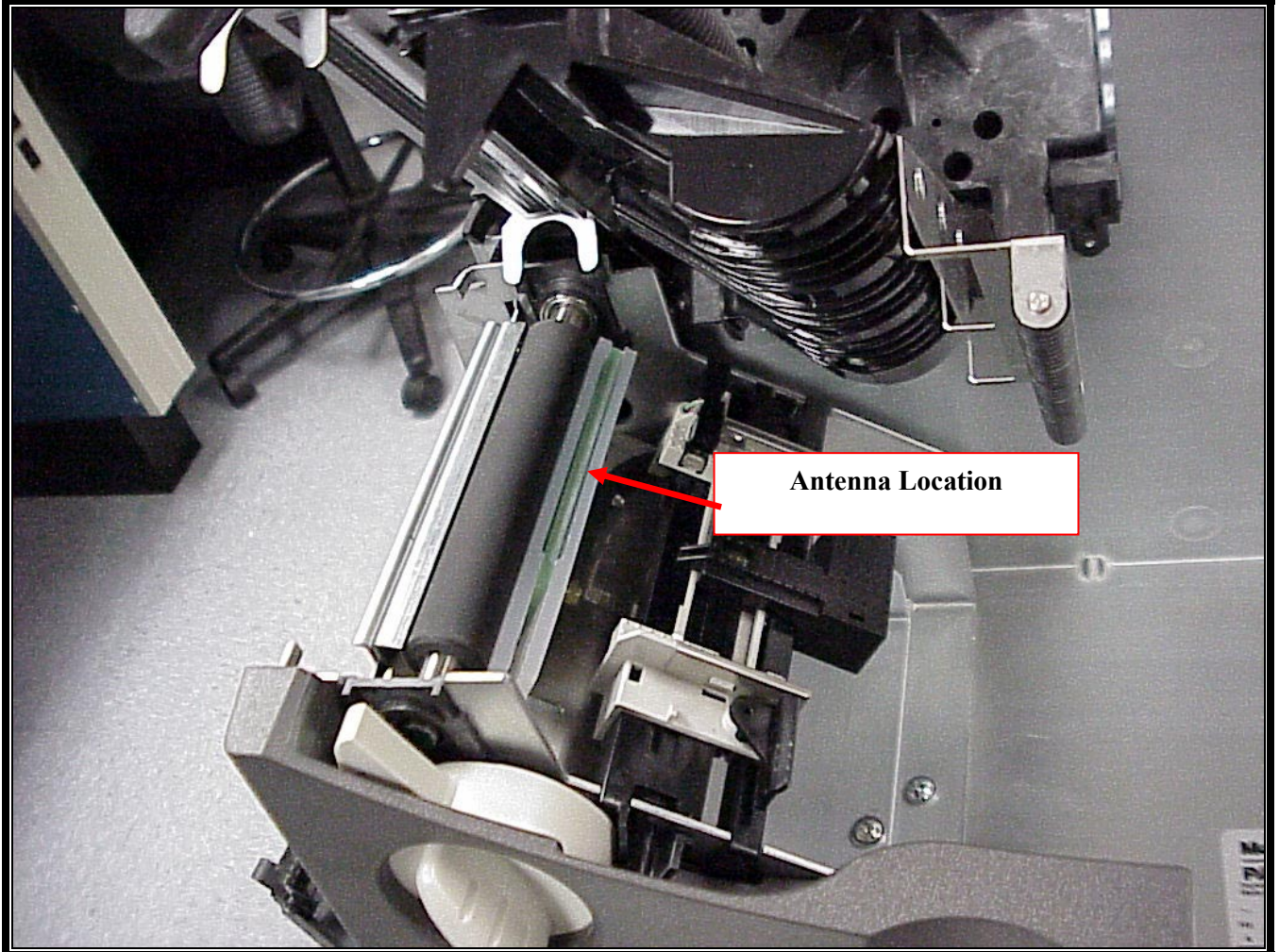
PHOTOGRAPH 12: EUT INSTALLED IN PRINTER 2



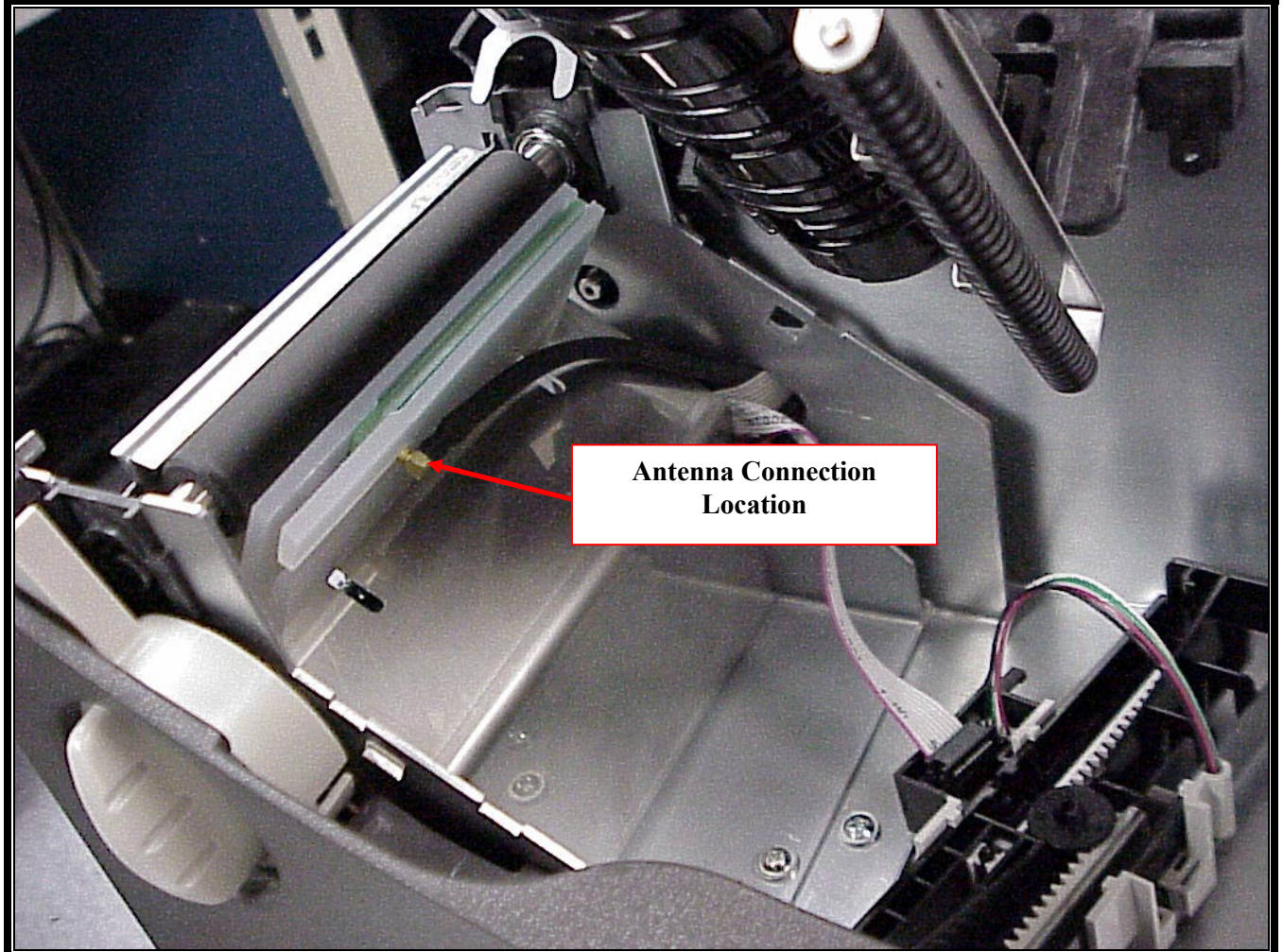
PHOTOGRAPH 13: RFID INTERFACE SIDE 1



PHOTOGRAPH 14: RFID INTERFACE SIDE 2



PHOTOGRAPH 15: ANTENNA LOCATION



PHOTOGRAPH 16: ANTENNA CONNECTION LOCATION

Rhein Tech Laboratories
360 Herndon Parkway
Suite 1400
Herndon, VA 20170
<http://www.rheintech.com>

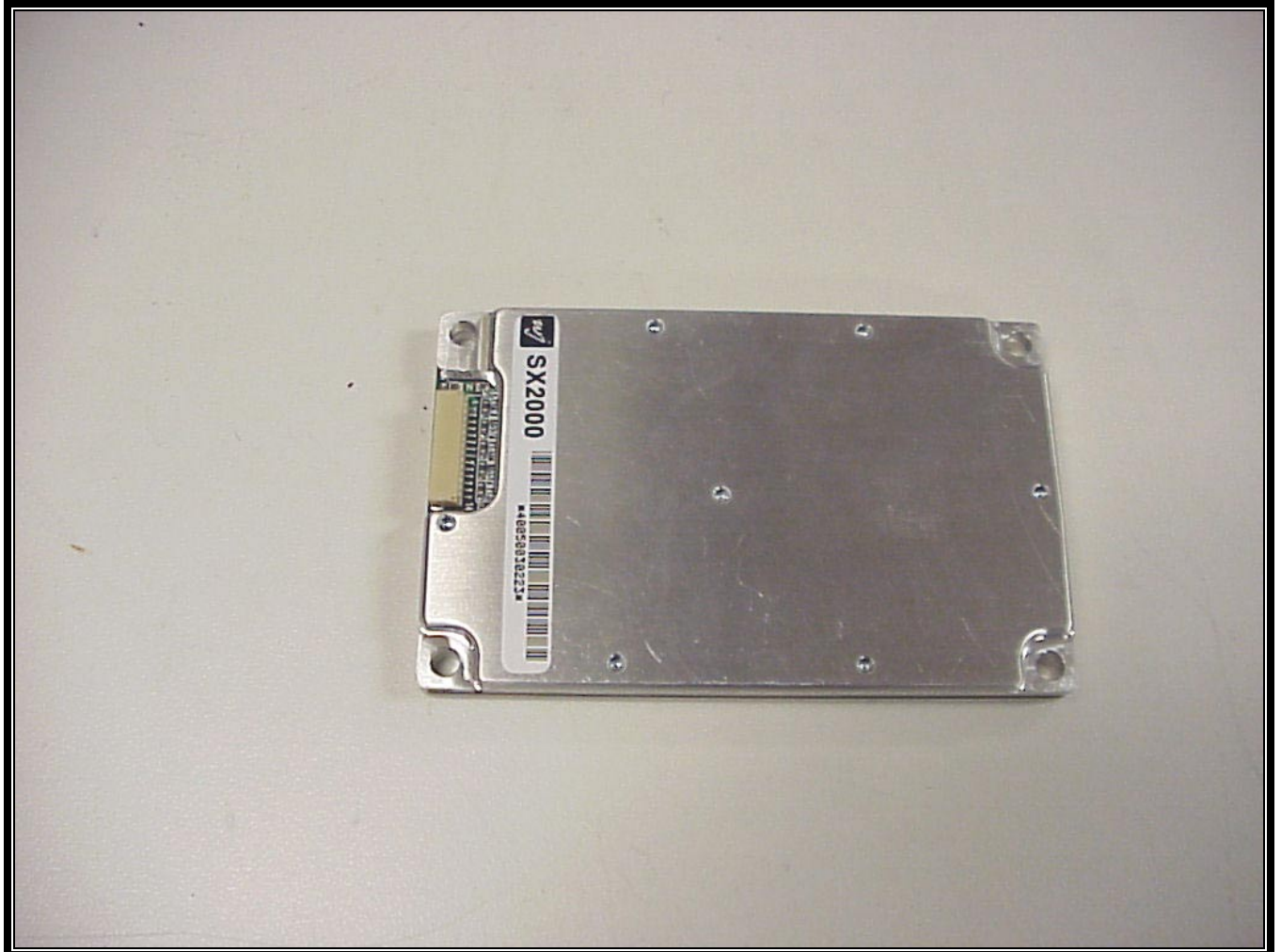
Client: Paxar Americas, Inc.
FCC: Part 15.247
IC: RSS-210
FCC ID: GU6WJSX2000
Model : AlienC1915 RFID Module



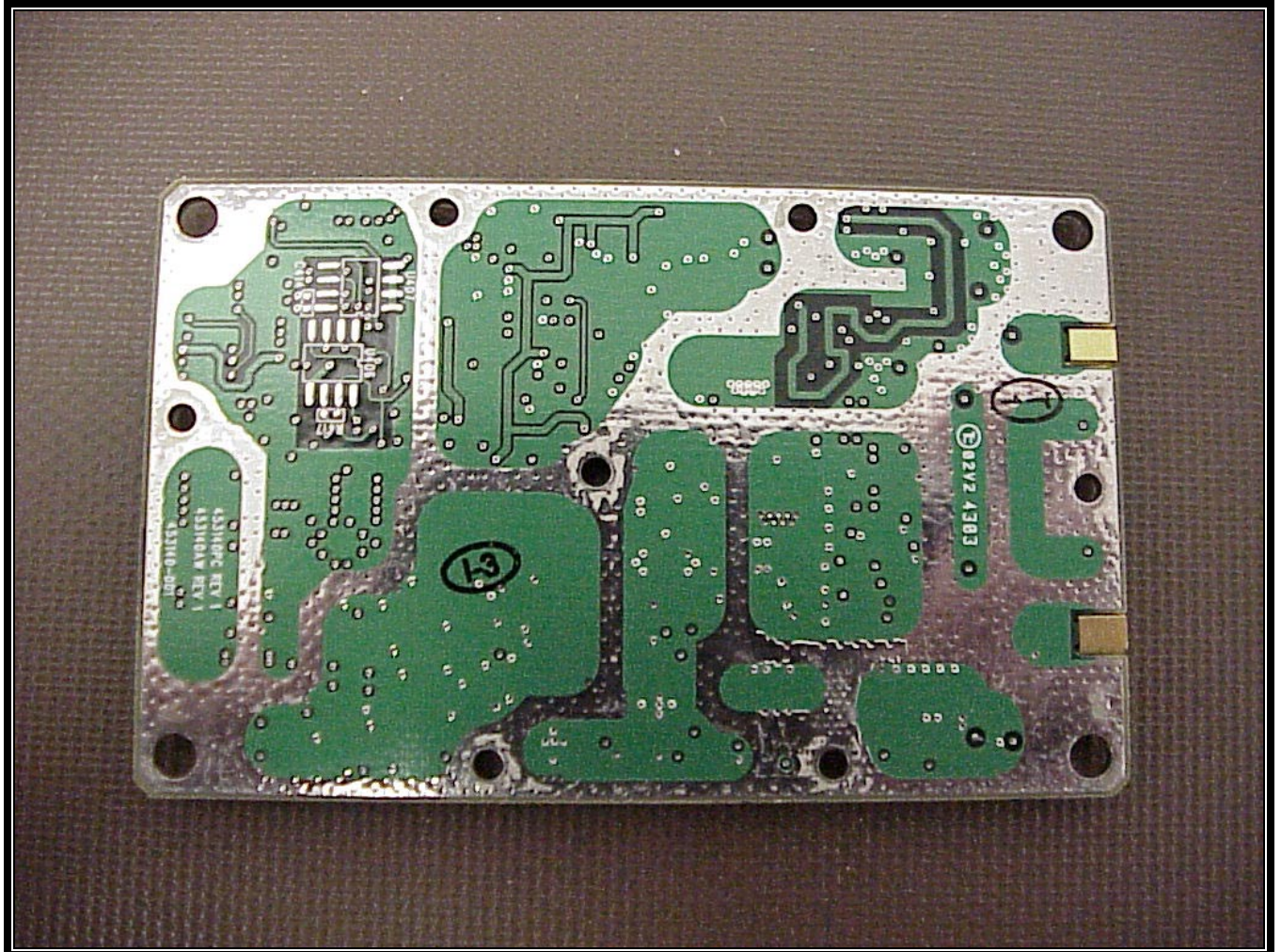
PHOTOGRAPH 17: ALIEN RFID CARD FRONT VIEW

Rhein Tech Laboratories
360 Herndon Parkway
Suite 1400
Herndon, VA 20170
<http://www.rheintech.com>

Client: Paxar Americas, Inc.
FCC: Part 15.247
IC: RSS-210
FCC ID: GU6WJSX2000
Model: AlienC1915 RFID Module



PHOTOGRAPH 18: ALIEN RFID CARD REAR VIEW



PHOTOGRAPH 20: ALIEN RFID CARD SIDE 2