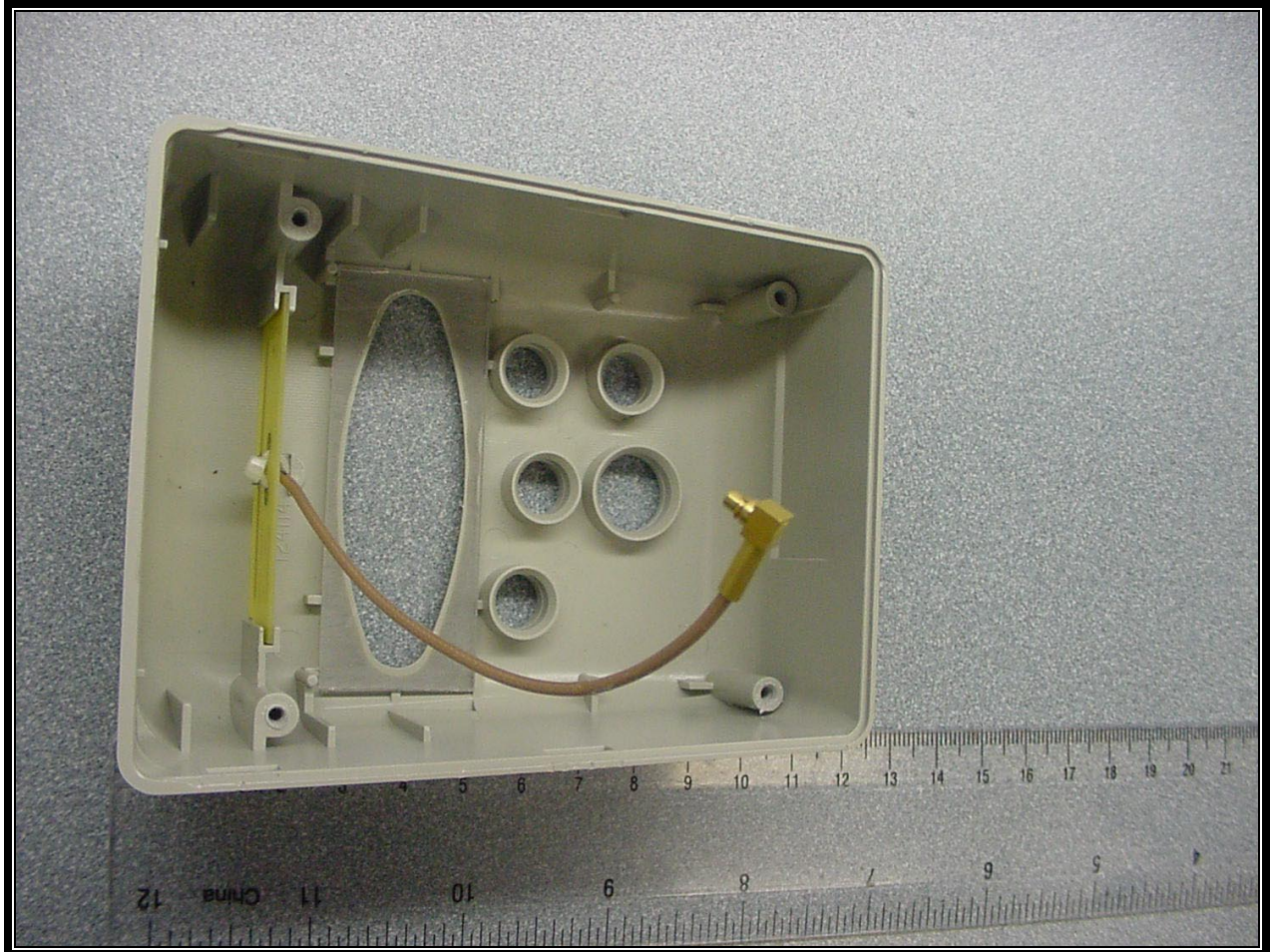


PHOTOGRAPH 25: TOP ASSEMBLY BRACKET



PHOTOGRAPH 26: ANTENNA MOUNTED IN TOP COVER

Rhein Tech Laboratories
360 Herndon Parkway
Suite 1400
Herndon, VA 20170
<http://www.rheintech.com>

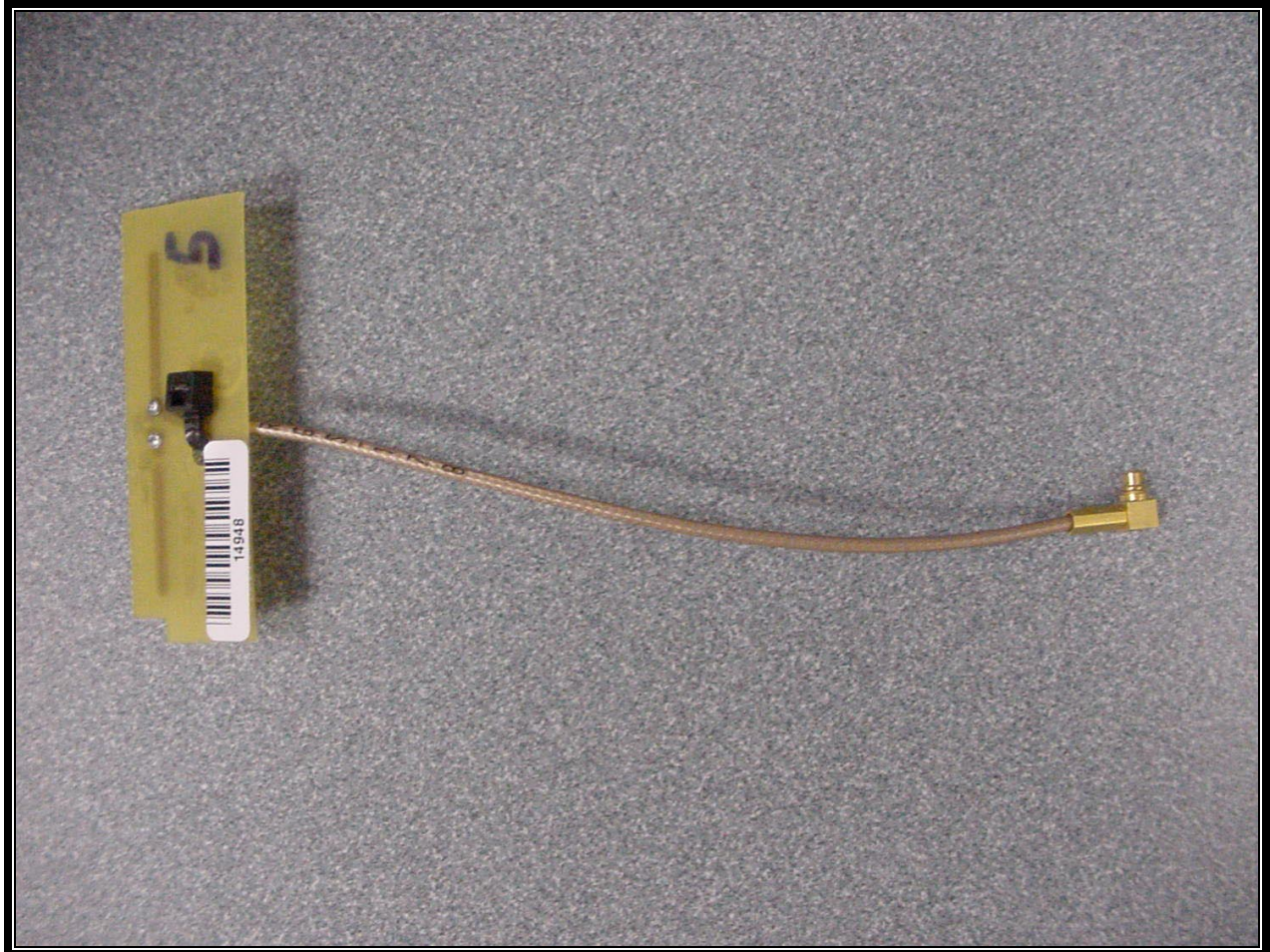
Client: Paxar Americas, Inc.
FCC: Part 15.247
Industry Canada: RSS-210
FCC ID: GU69460IPLA3021
Model #: 9460IP



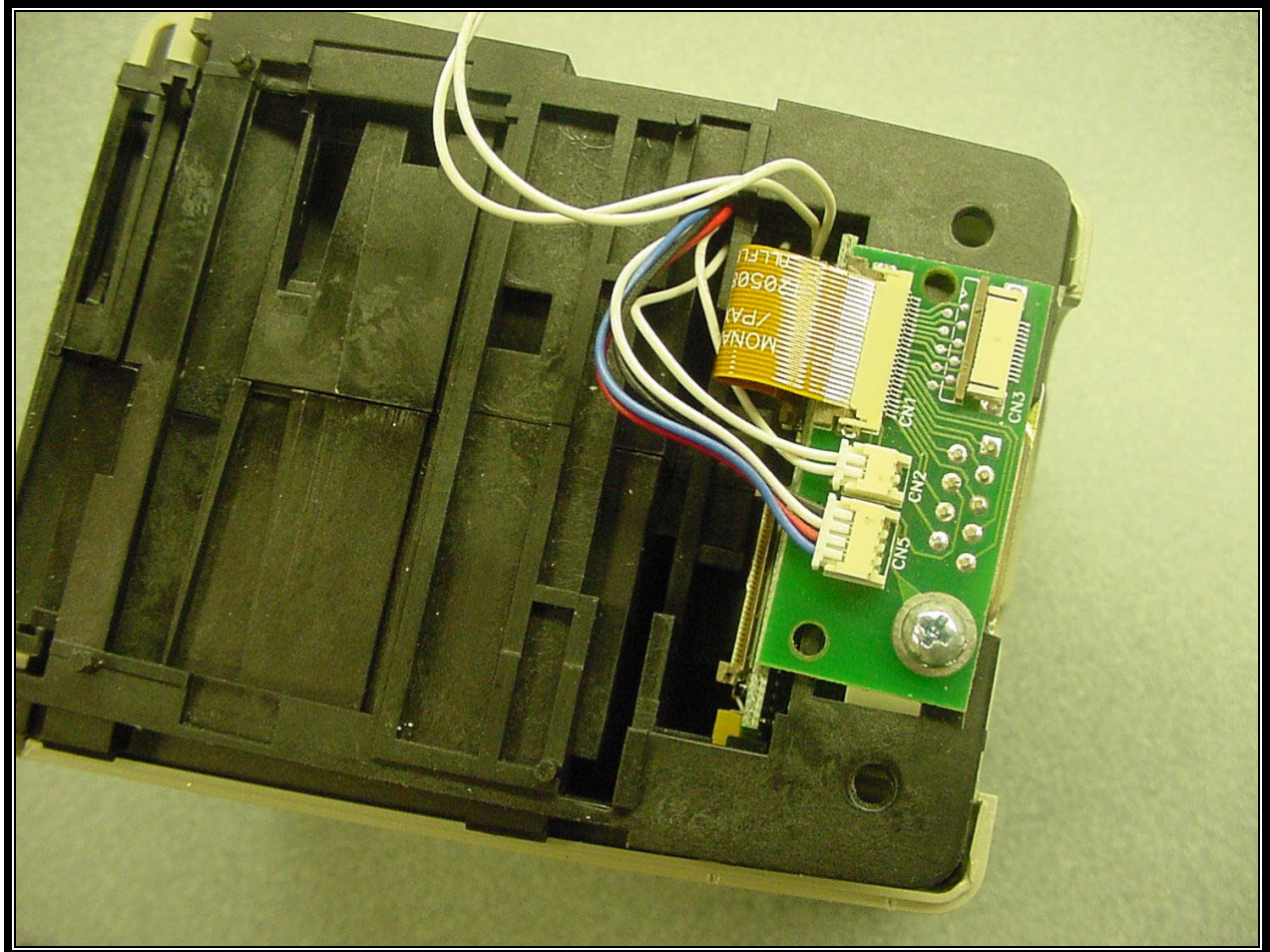
PHOTOGRAPH 27: FRONT OF ANTENNA

Rhein Tech Laboratories
360 Herndon Parkway
Suite 1400
Herndon, VA 20170
<http://www.rheintech.com>

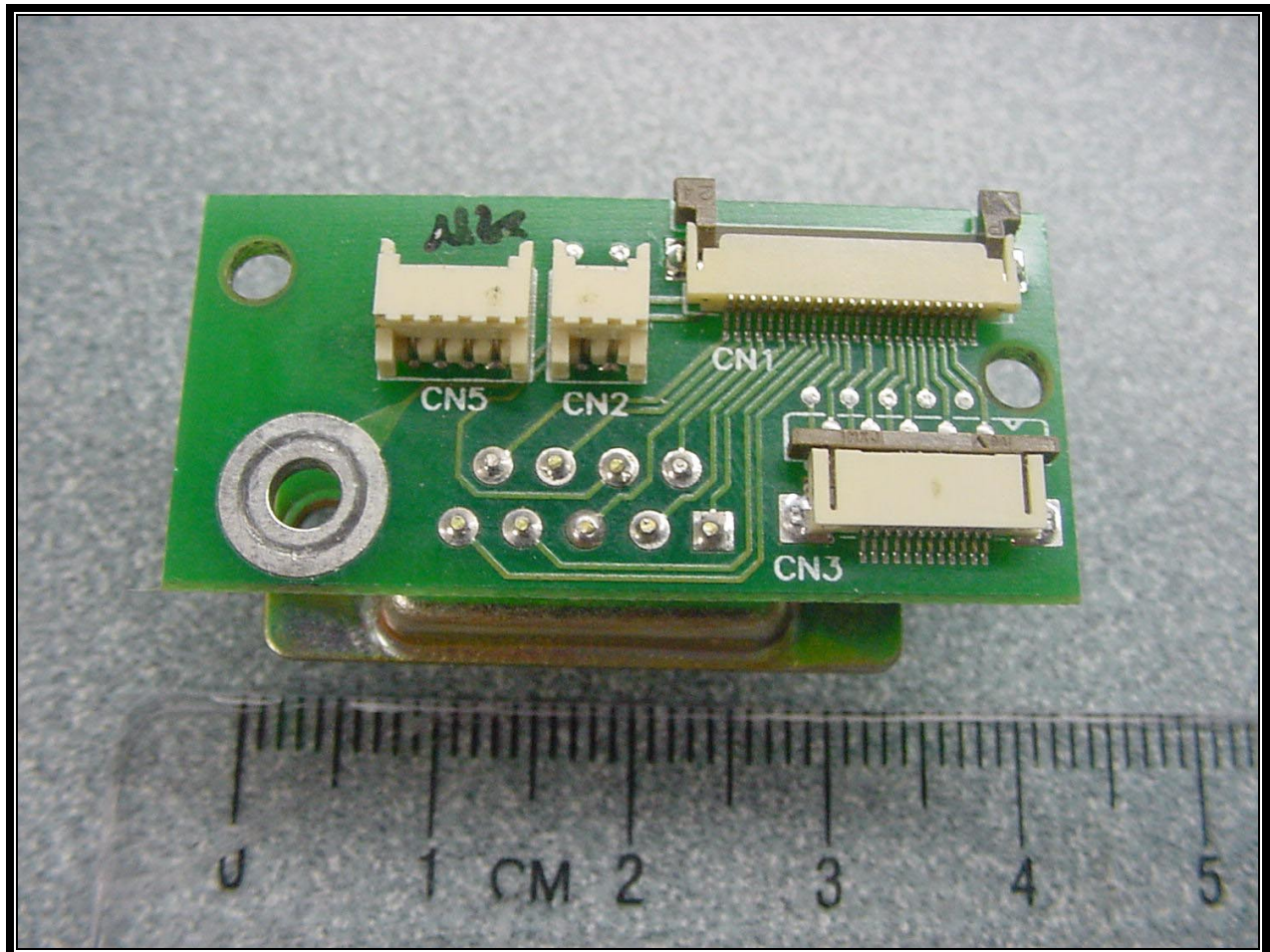
Client: Paxar Americas, Inc.
FCC: Part 15.247
Industry Canada: RSS-210
FCC ID: GU69460IPLA3021
Model #: 9460IP



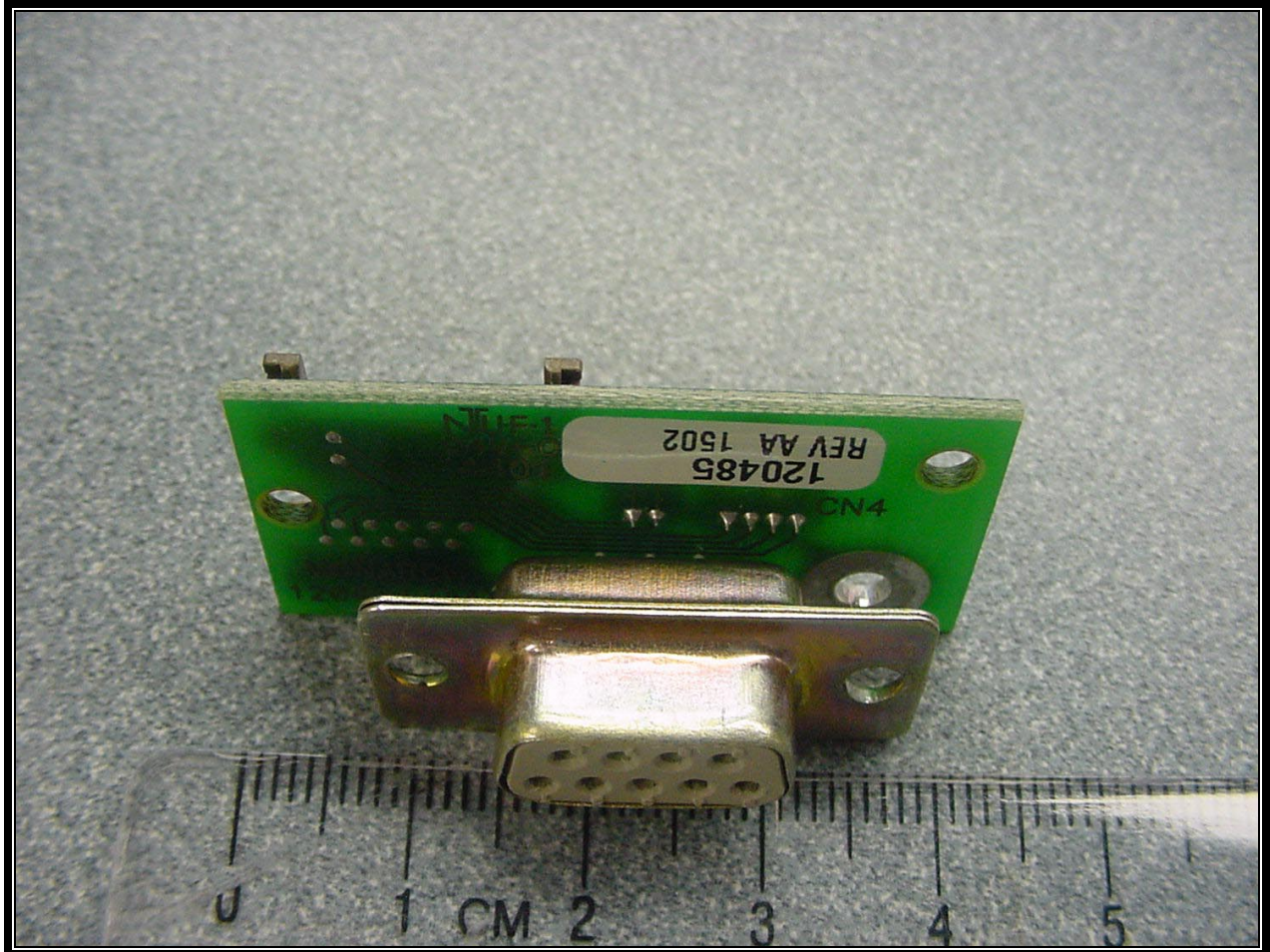
PHOTOGRAPH 28: BACK OF ANTENNA



PHOTOGRAPH 29: TOP WITHOUT RF ASSEMBLY



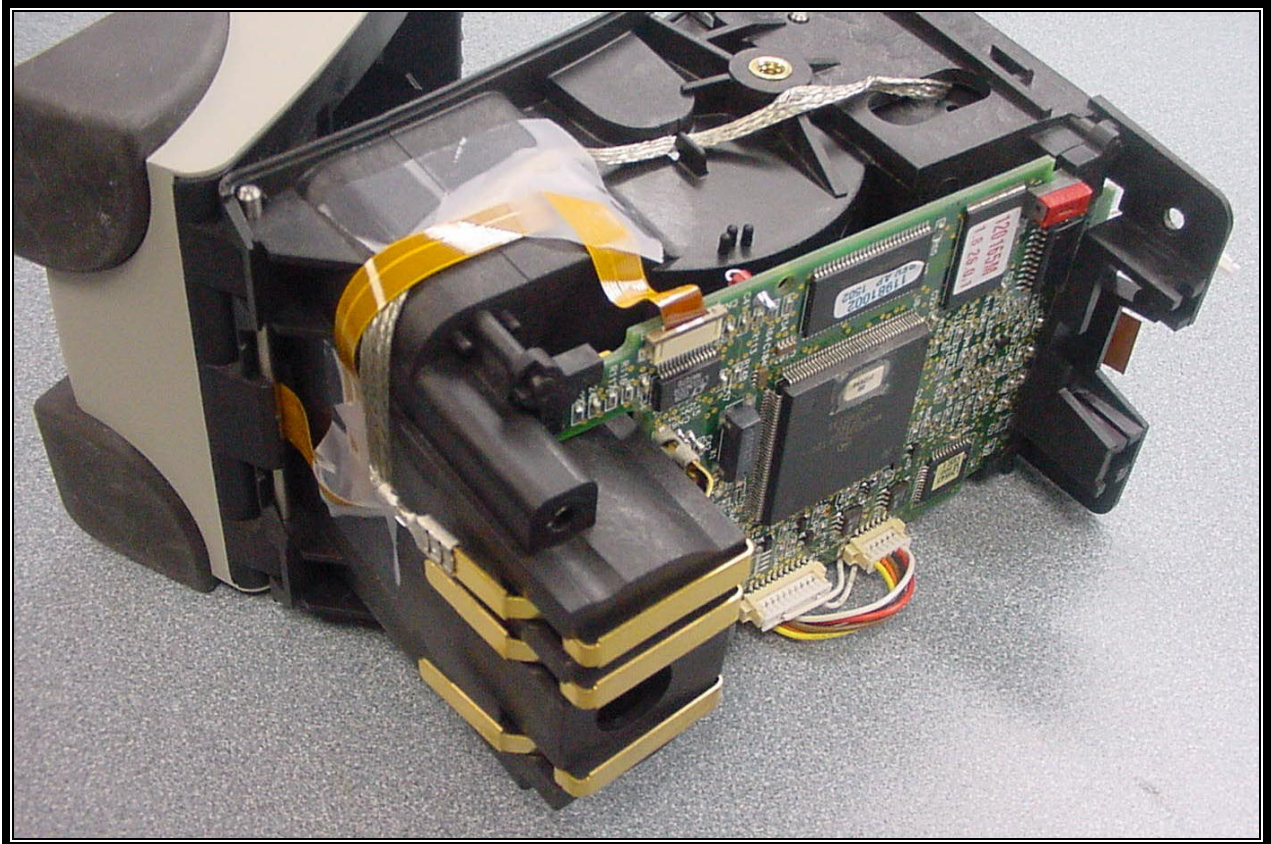
PHOTOGRAPH 30: TOP OF SERIAL PCB



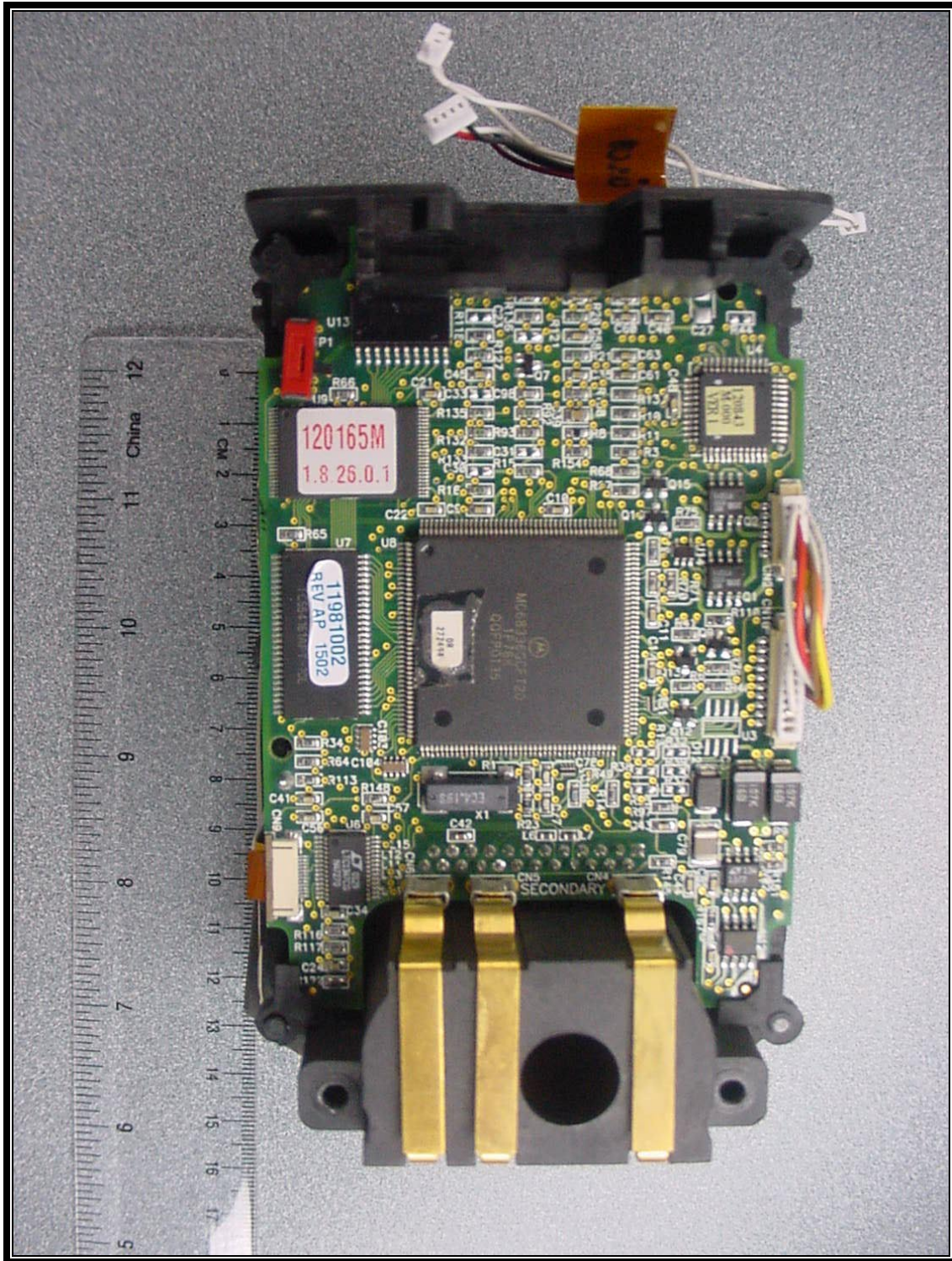
PHOTOGRAPH 31: BOTTOM OF SERIAL PCB WITH CONNECTOR



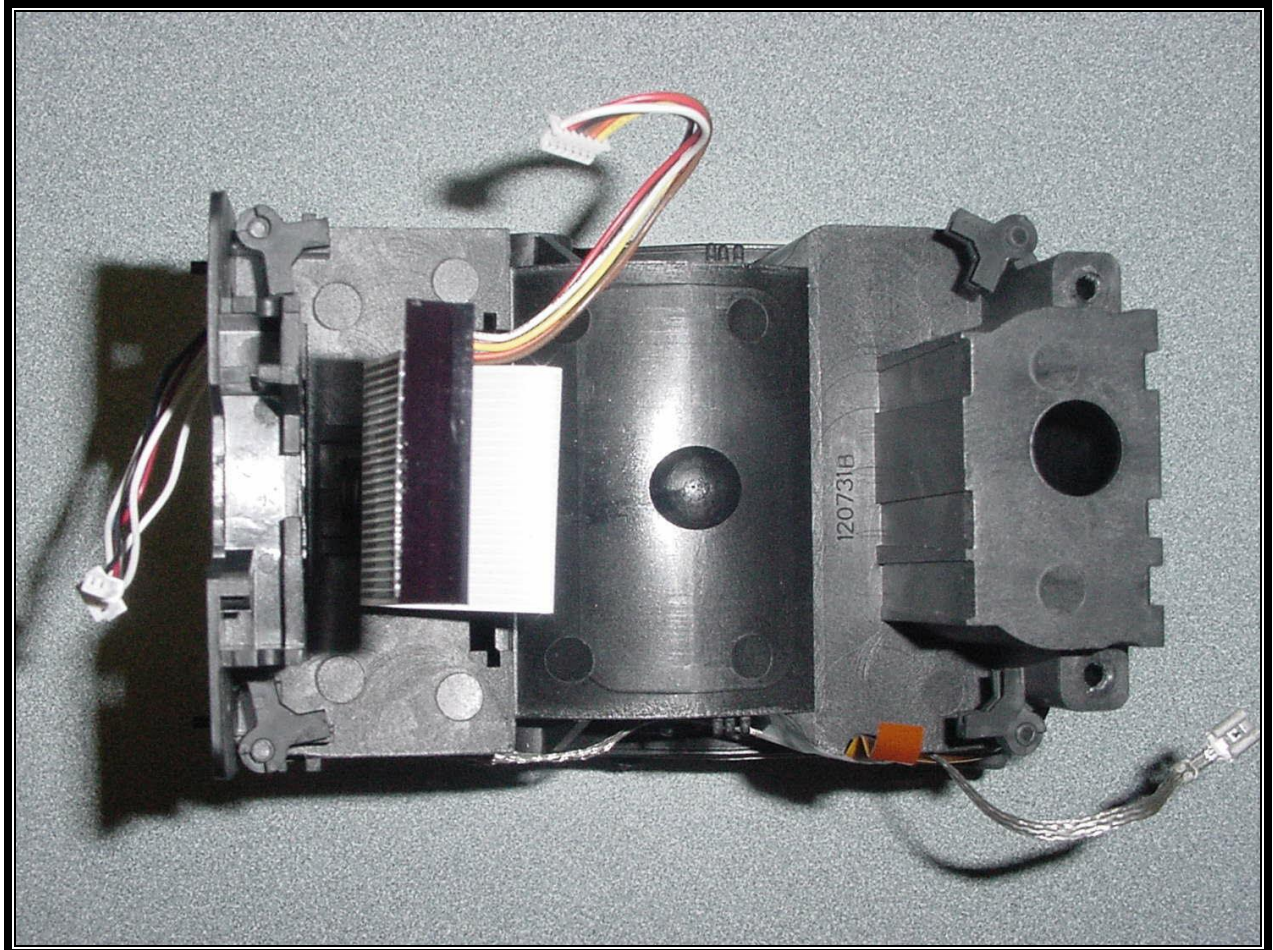
PHOTOGRAPH 32: INSIDE OF BACK CASE



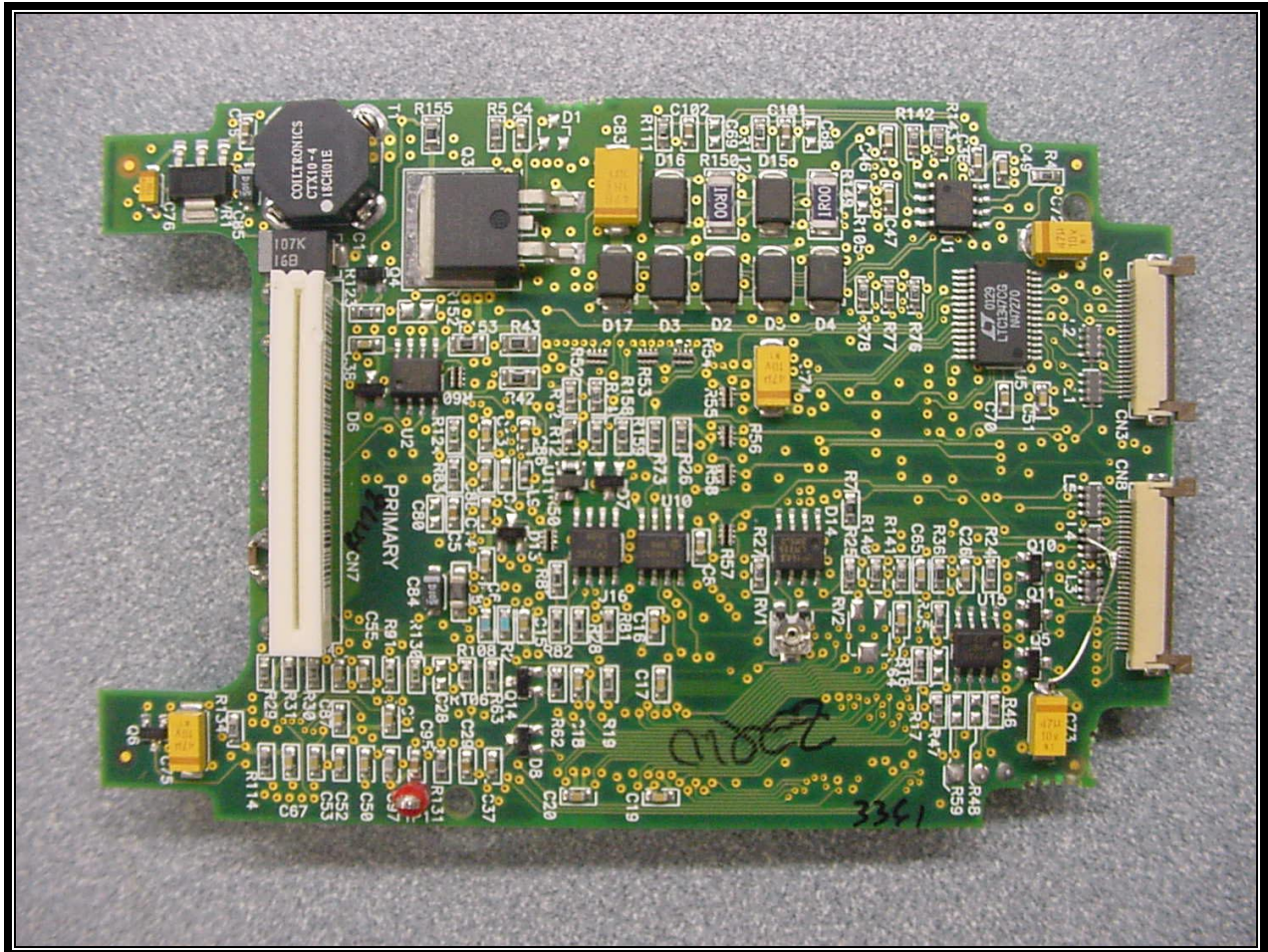
PHOTOGRAPH 33: MAIN PCB MOUNTED IN CHASSIS



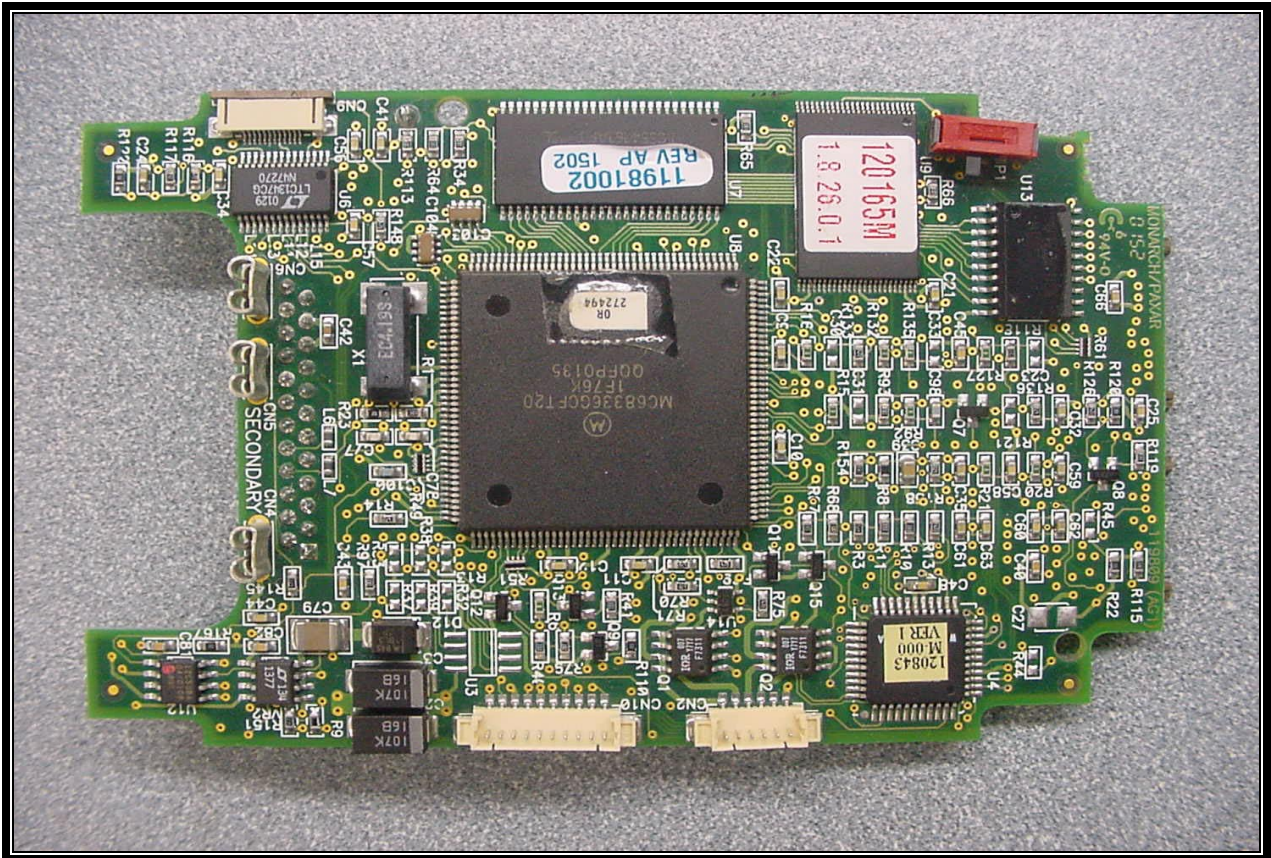
PHOTOGRAPH 34: MAIN PCB BACK VIEW IN CHASSIS



PHOTOGRAPH 35: INSIDE BACK OF CHASSIS WITH PCB REMOVED



PHOTOGRAPH 36: MAIN PCB FRONT



PHOTOGRAPH 37: MAIN PCB BACK