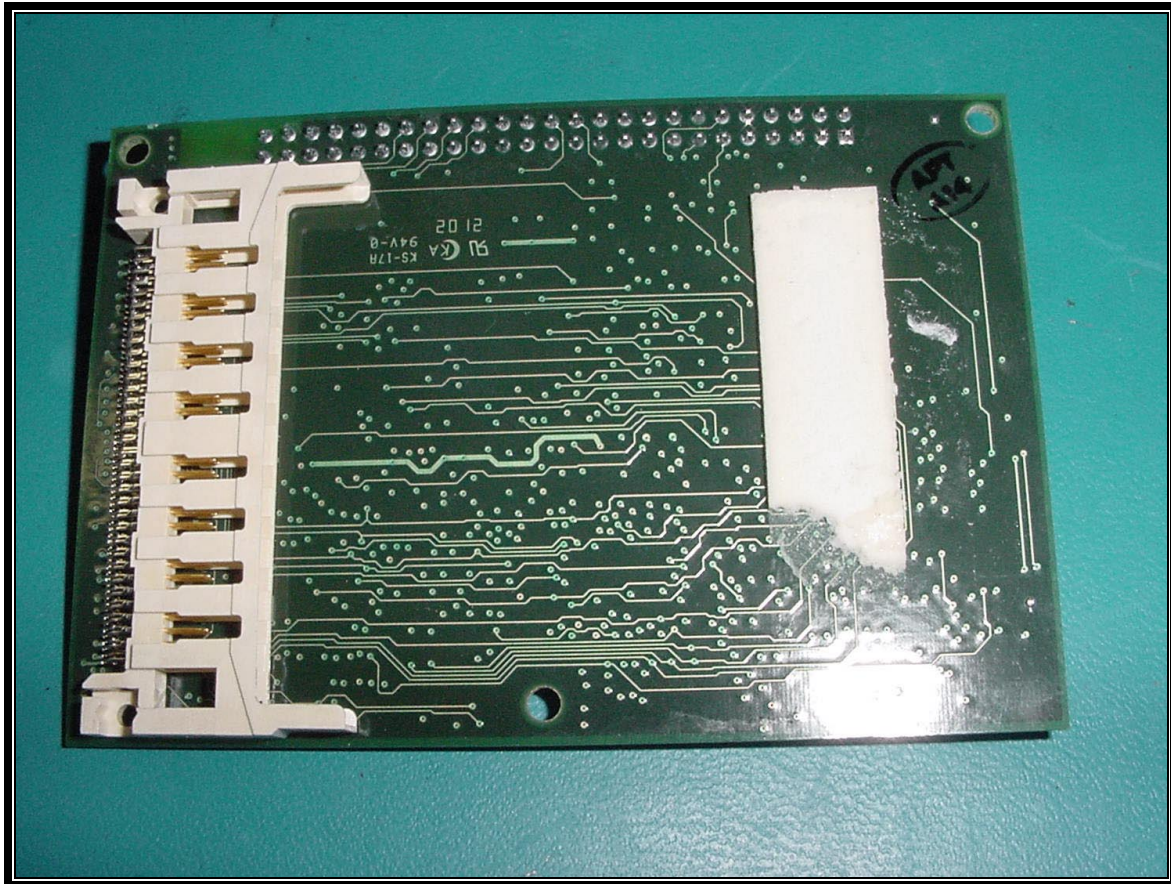
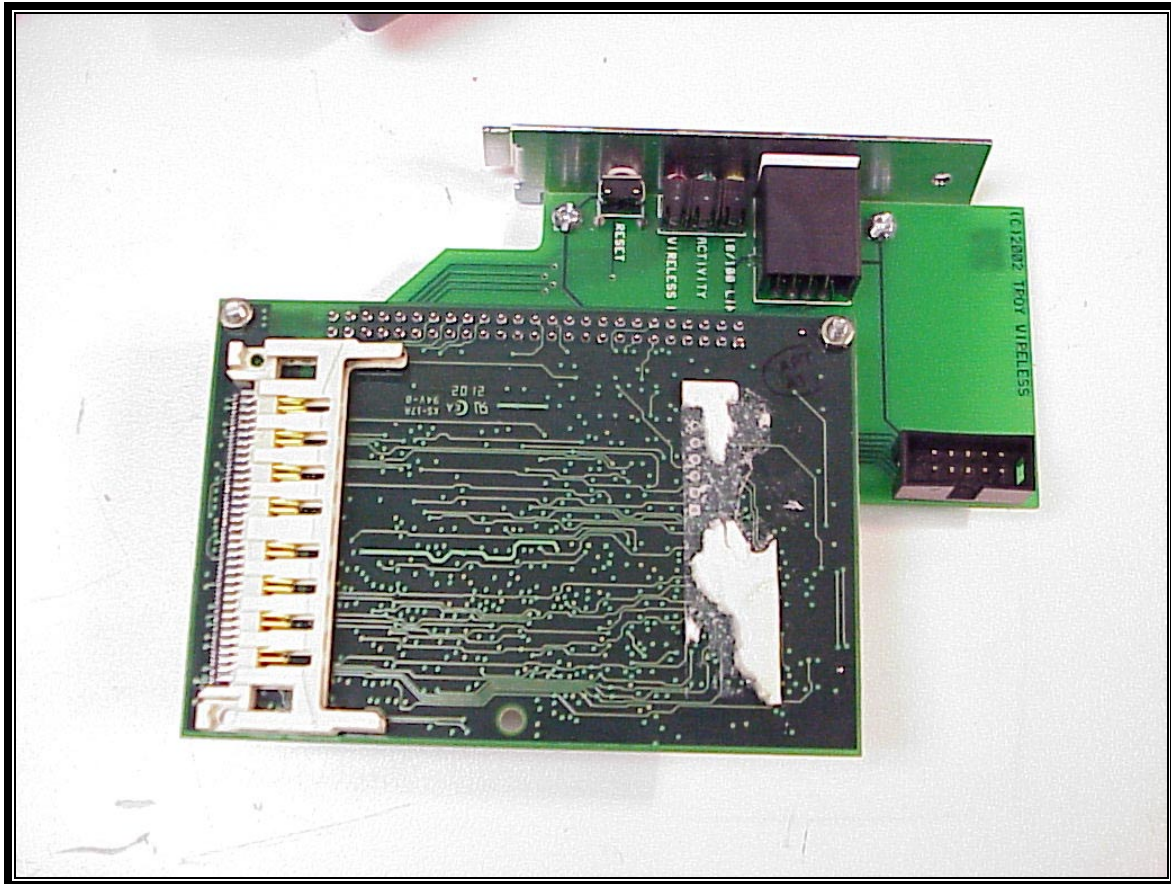


PHOTOGRAPH 19: PRINT SERVER PCB FRONT



PHOTOGRAPH 20: PRINT SERVER PCB BACK VIEW WITH WLAN PCMCIA CARD AND PCB MOUNTING ADAPTER REMOVED



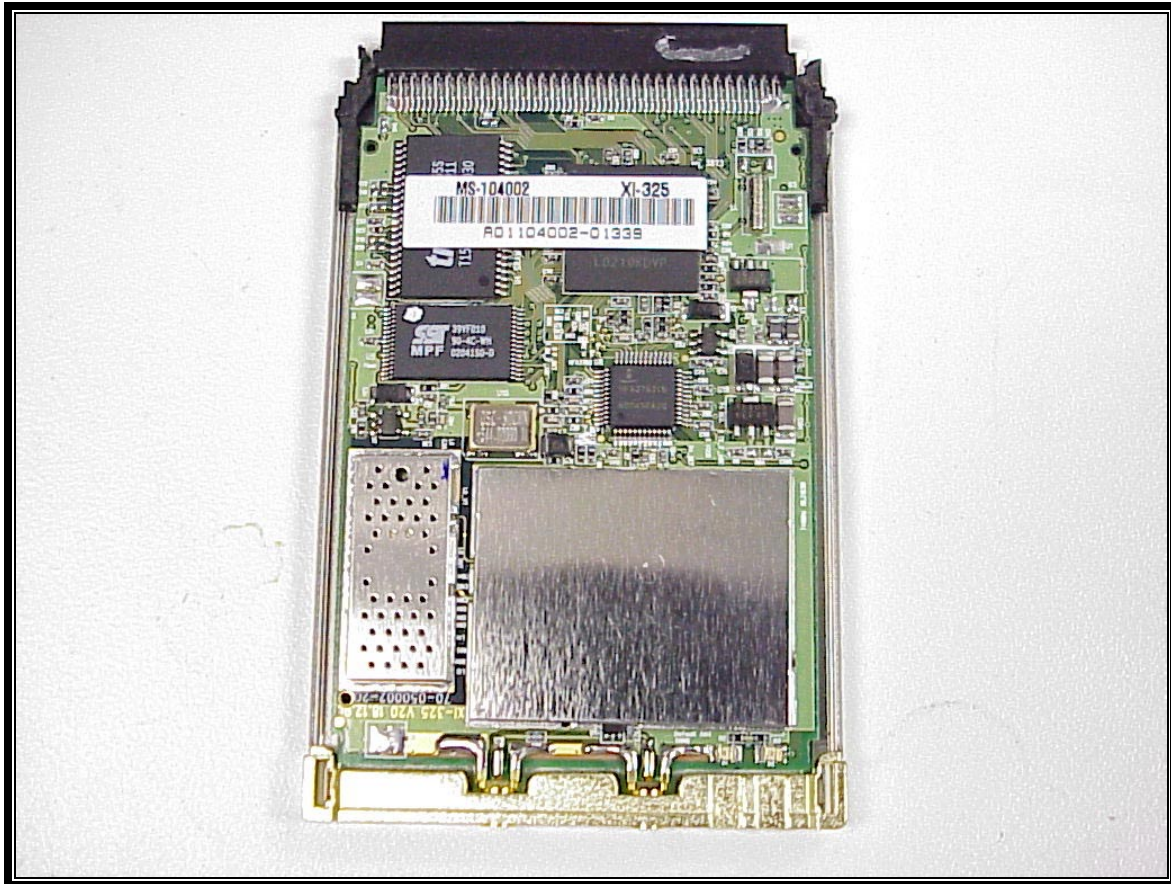
PHOTOGRAPH 21: COMPLETE PRINT SERVER REAR VIEW WITH WLAN CARD REMOVED



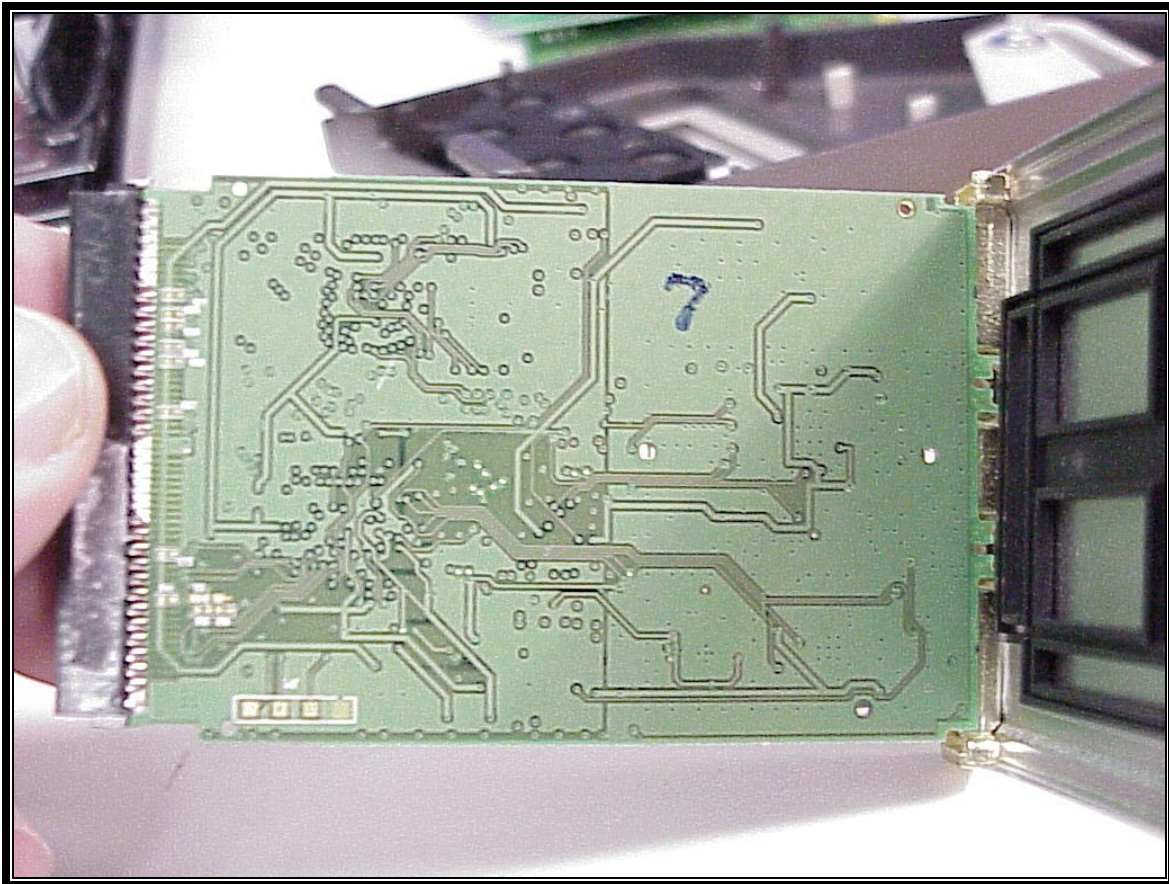
PHOTOGRAPH 22: WLAN CARD TOP VIEW



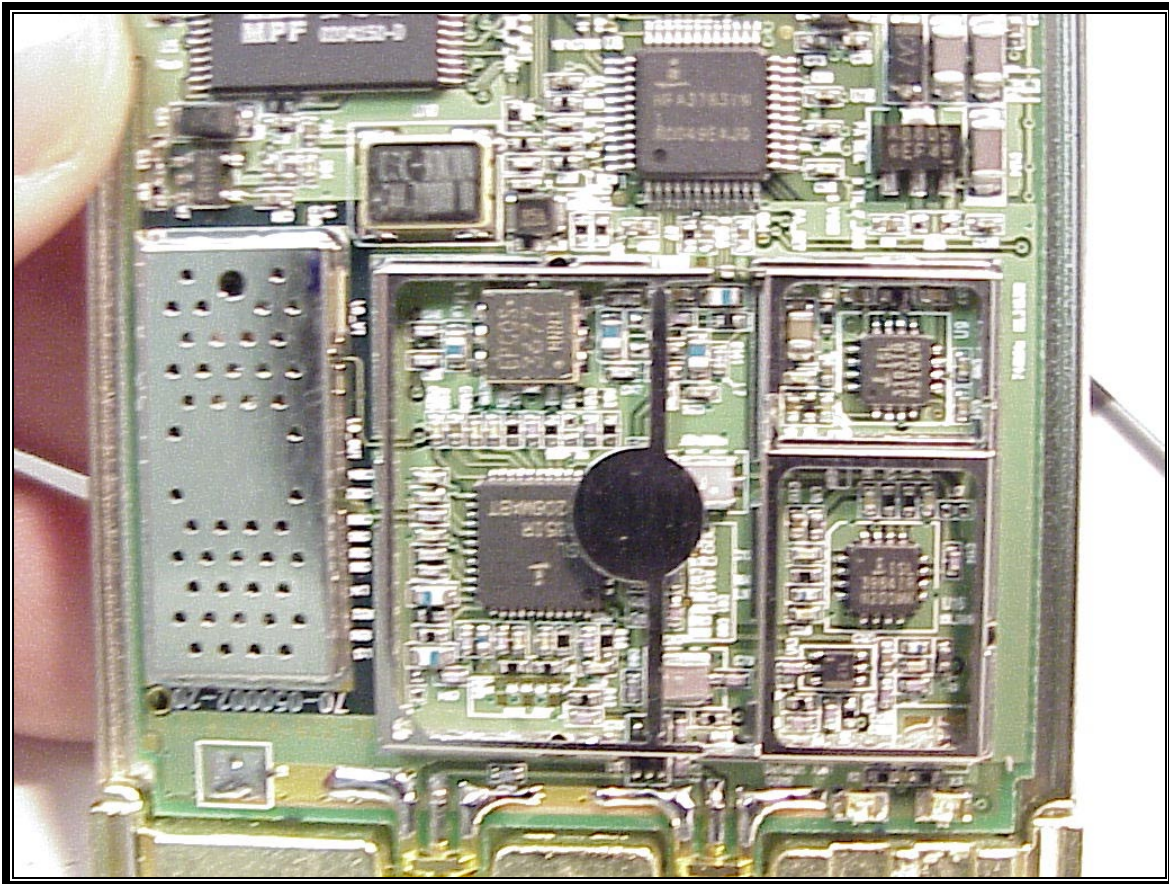
PHOTOGRAPH 23: WLAN CARD REAR VIEW



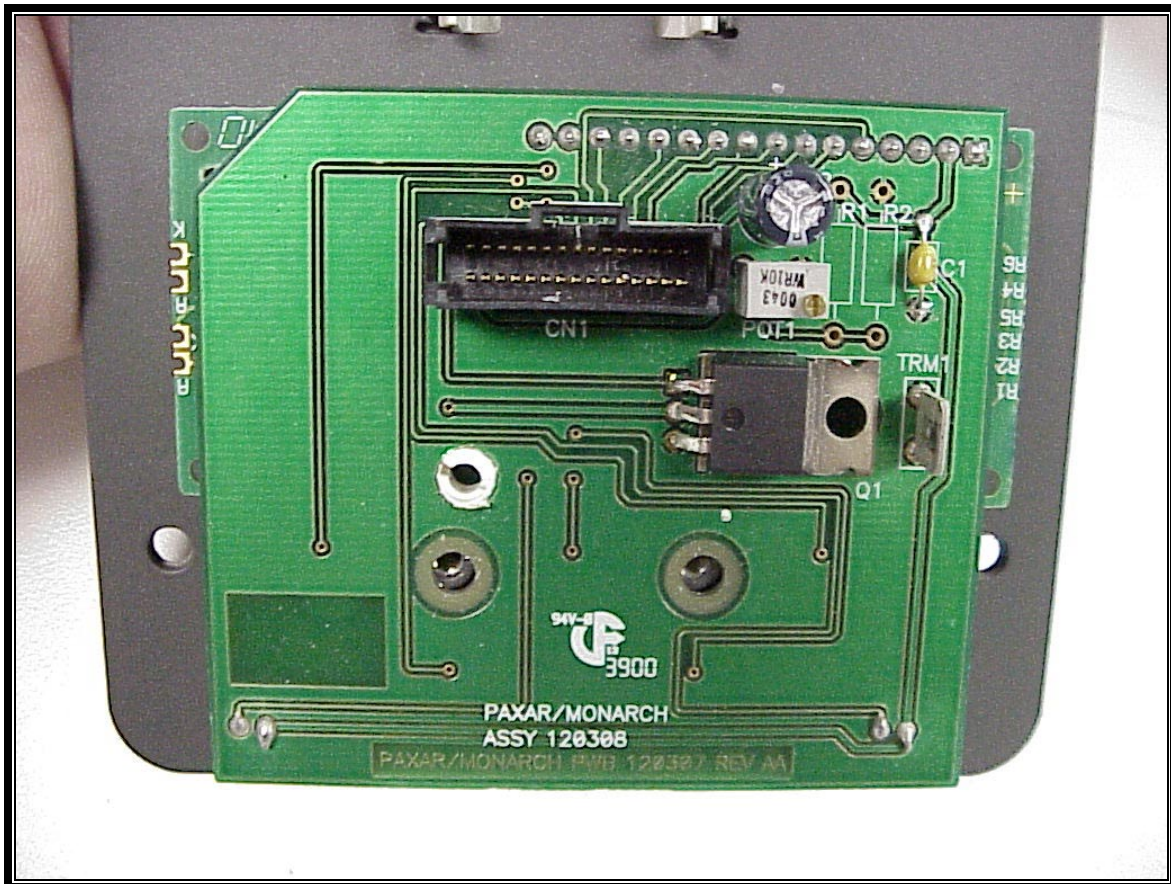
PHOTOGRAPH 24: WLAN CARD PCB FRONT WITH SHIELDS



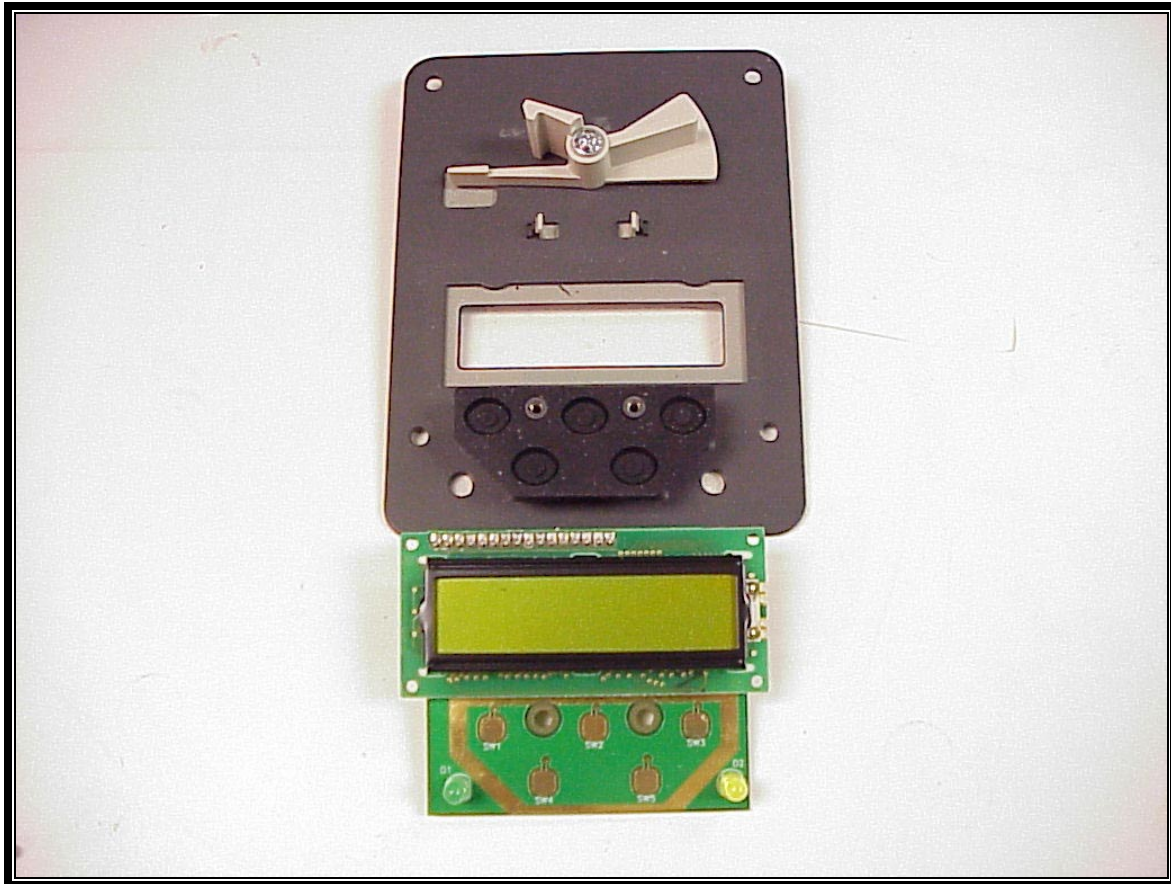
PHOTOGRAPH 25: WLAN CARD PCB REAR



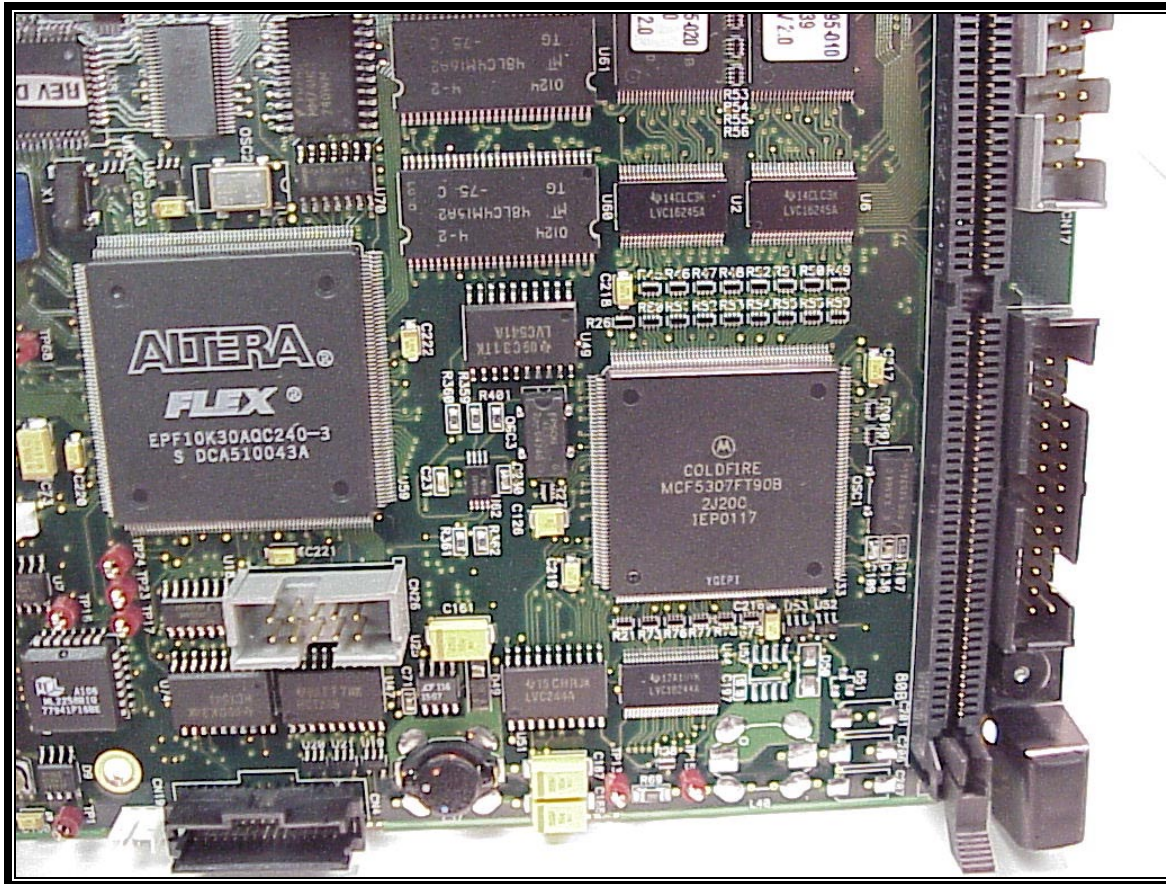
PHOTOGRAPH 26: WLAN CARD PCB FRONT WITHOUT SHIELDS



PHOTOGRAPH 27: KEYPAD BACK VIEW



PHOTOGRAPH 28: KEYPAD TOP VIEW



PHOTOGRAPH 29: PRINTER CIRCUIT BOARD WITH SEMI-CONDUCTORS (TOP RIGHT CORNER OF PCB)