

APPENDIX G: LABEL AND LABEL LOCATION

Please refer to the following page for a sample of the FCC and Industry Canada Identification Label, the label location is shown below.

Because the module can be seen from an external view of the host device; the module is labeled with the FCC ID label, per DA 00-1407.



PHOTOGRAPH 1: LOCATION OF FCC ID LABEL AND 2-PART STATEMENT LABEL

7

6

5

4

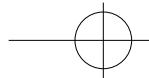
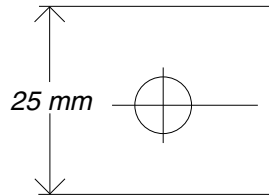
3

2

Loc	Sym	Change	En No.	Date	By	Chk

D

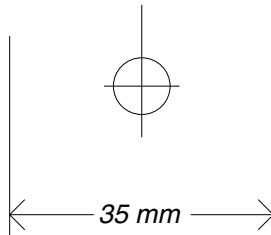
D



Notes:
 1. Outline for graphic location on insert. Do not print.
 2. Dimensions are for reference. See part drawing for location and details.

C

C



B

B

~~Color Sample~~

Black background
Pantone 116 graphics

Yellow background
Pantone 116

White background



Note:
 1. This is a purchased two color label.
 2. To be used on new Pathfinder Ultra products WITH scanner option.

Similar label: aw-09414; pn-124509

A

A

PAXAR		ID Artmaster	
		Paxar Americas, Inc. 170 Monarch Lane Miamisburg, OH 45342 937 865-8025 FAX 937 865-2048	
Name	6037 Scan Label (NEW)	Date	1/22/03
Client	J. Bacher	Scale	1:1
Designer	GB Arnold	Dwg Size	8.5 x 11
Graphic Number	aw-09506	Rev	Ref. Number pn-

Notice:
 This information is the confidential, restricted, and sole property of PaxarAmericas, Inc. It should be used by the recipient only for the purposes benefiting Paxar, and shall not be disclosed, reproduced, or used by others without prior written approval.

Design Notes:
 1. Artwork shown represents size and style of finished product only.
 2. Artwork does not necessarily reflect manufacturing process and/or tooling requirements.
 3. Please refer to product drawing for location on part and color.
 4. Dimensions are for reference only.

7

6

5

4

3

2



PHOTOGRAPH 2: FCC 2-PART STATEMENT LABEL