

# MONARCH FCC ID: GU66037LA3021 -- 2.4GHz Body SAR

SAM Phantom; Flat Section; Probe:ET3DV6 - SN1677; ConvF(4.00,4.00,4.00)

Med. Parameters 2450 MHz Muscle:  $\sigma = 1.98$  mho/m  $\epsilon_r = 52.2$   $\rho = 1.00$  g/cm<sup>3</sup>; Antenna Position -- Out; Crest Factor 1.0

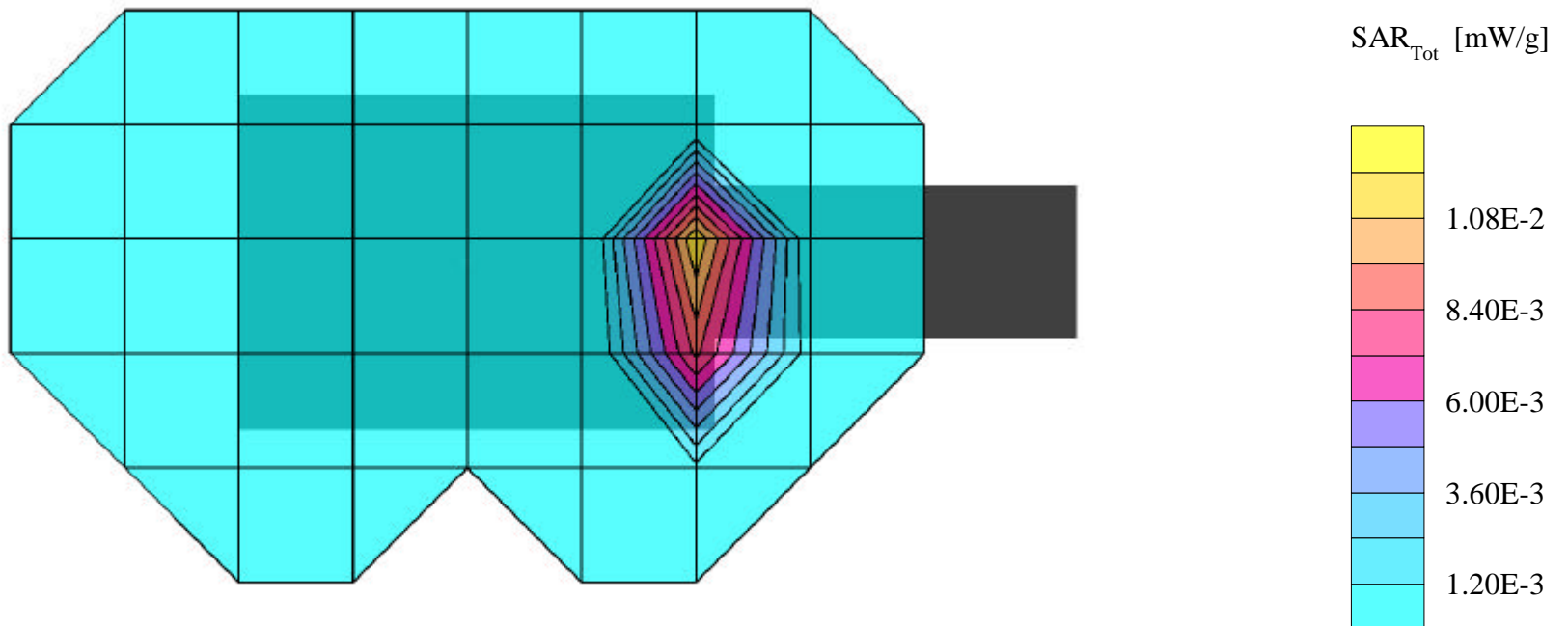
**SAR (1g): 0.0195 mW/g, SAR (10g): 0.0081 mW/g**

Monarch 2.4GHz FHSS Wireless Scanner Model: M06037 w/ Symbol LA-3021-100-US

Low Channel, 2402MHz [CW Mode]; Standard Battery; Ambient Temp. = 22.2°C / Meas. Tissue Temp. = 22.1°C

Conducted Power = 112mW; Spacing = Touch keypad of EUT to flat phantom, No Holster/No BeltClip

Test Date -- 05/21/2002 [FCC/OET Bulletin 65 - Supplement C, July 2001]



# MONARCH FCC ID: GU66037LA3021 -- 2.4GHz Body SAR

SAM Phantom; Flat Section; Probe:ET3DV6 - SN1677; ConvF(4.00,4.00,4.00)

Med. Parameters 2450 MHz Muscle:  $\sigma = 1.98$  mho/m  $\epsilon_r = 52.2$   $\rho = 1.00$  g/cm<sup>3</sup>; Antenna Position -- Out; Crest Factor 1.0

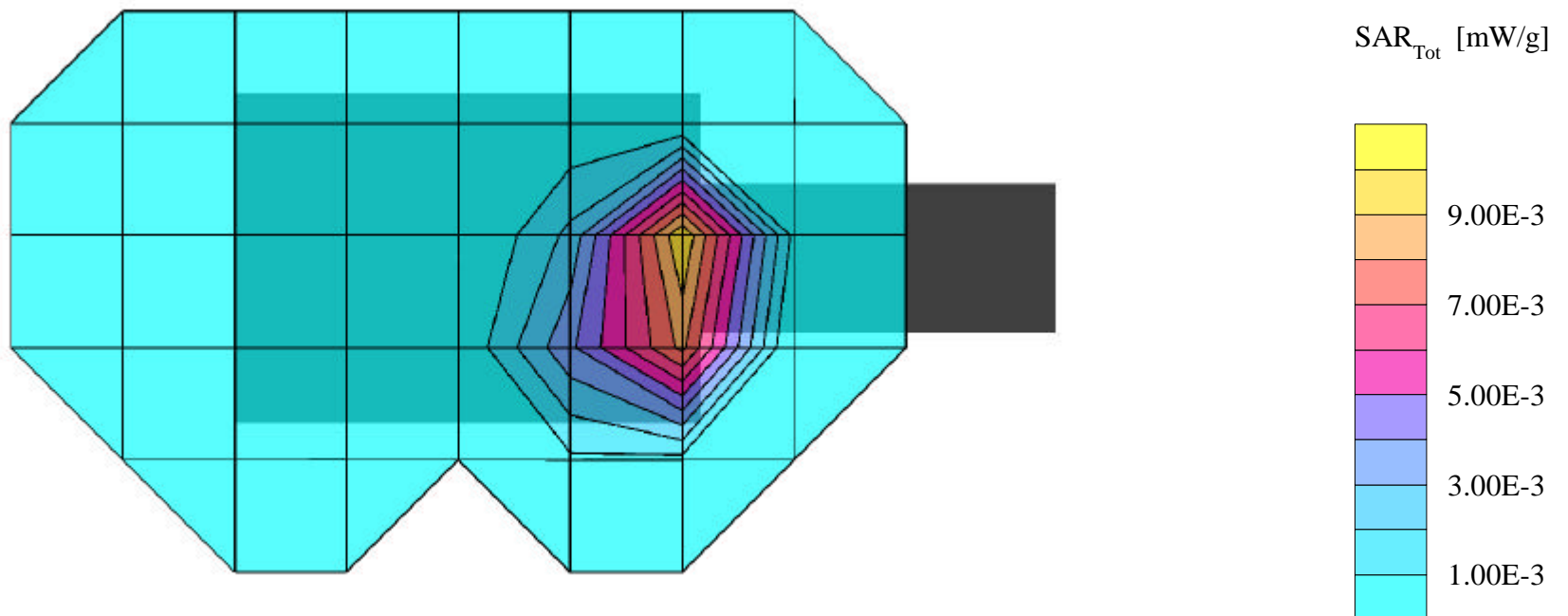
**SAR (1g): 0.0214 mW/g, SAR (10g): 0.0094 mW/g**

Monarch 2.4GHz FHSS Wireless Scanner Model: M06037 w/ Symbol LA-3021-100-US

Mid Channel, 2441MHz [CW Mode]; Standard Battery; Ambient Temp. = 22.2°C / Meas. Tissue Temp. = 22.1°C

Conducted Power = 112mW; Spacing = Touch keypad of EUT to flat phantom, No Holster/No BeltClip

Test Date -- 05/21/2002 [FCC/OET Bulletin 65 - Supplement C, July 2001]



# MONARCH FCC ID: GU66037LA3021 -- 2.4GHz Body SAR

SAM Phantom; Flat Section; Probe:ET3DV6 - SN1677; ConvF(4.00,4.00,4.00)

Med. Parameters 2450 MHz Muscle:  $\sigma = 1.98$  mho/m  $\epsilon_r = 52.2$   $\rho = 1.00$  g/cm<sup>3</sup>; Antenna Position -- Out; Crest Factor 1.0

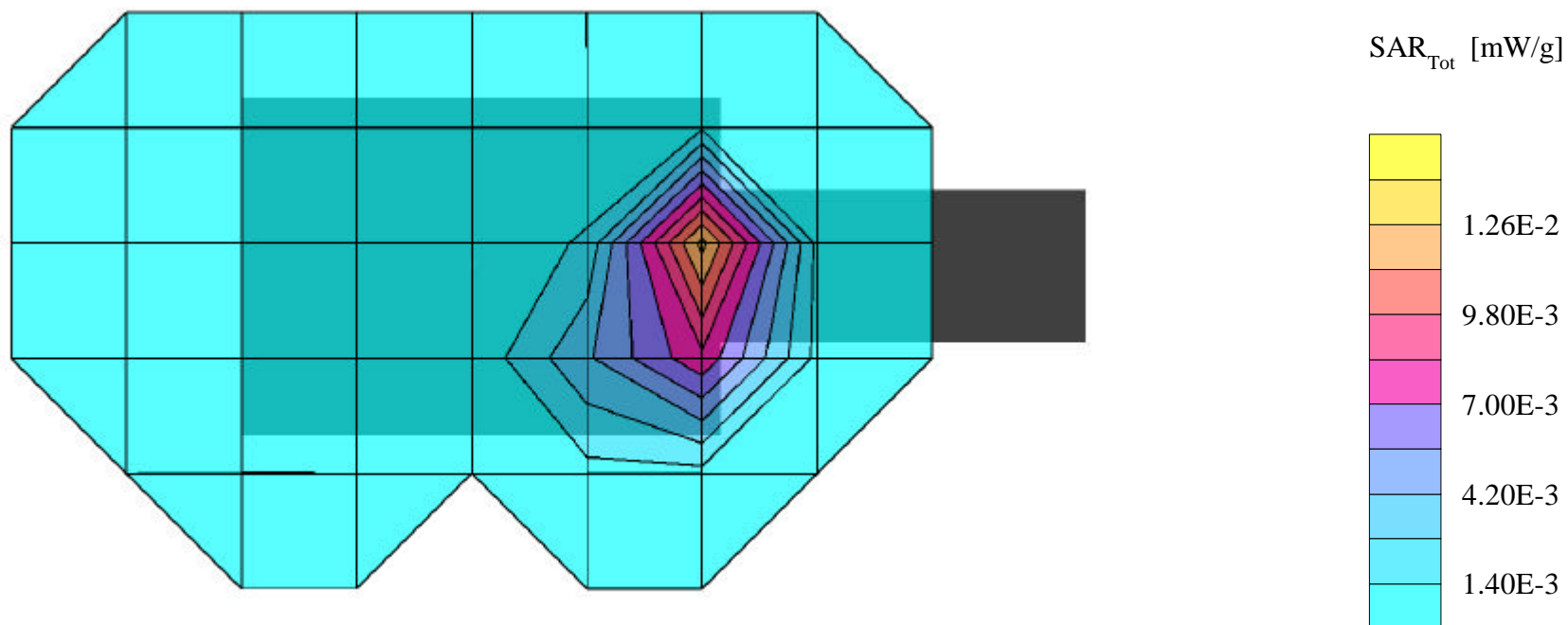
**SAR (1g): 0.0200 mW/g, SAR (10g): 0.0083 mW/g**

Monarch 2.4GHz FHSS Wireless Scanner Model: M06037 w/ Symbol LA-3021-100-US

High Channel, 2480MHz [CW Mode]; Standard Battery; Ambient Temp. = 22.2°C / Meas. Tissue Temp. = 22.1°C

Conducted Power = 112mW; Spacing = Touch keypad of EUT to flat phantom, No Holster/No BeltClip

Test Date -- 05/21/2002 [FCC/OET Bulletin 65 - Supplement C, July 2001]



# MONARCH FCC ID: GU66037LA3021 -- 2.4GHz Body SAR

SAM Phantom; Flat Section; Probe:ET3DV6 - SN1677; ConvF(4.00,4.00,4.00)

Med. Parameters 2450 MHz Muscle:  $\sigma = 1.98$  mho/m  $\epsilon_r = 52.2$   $\rho = 1.00$  g/cm<sup>3</sup>; Antenna Position -- Out; Crest Factor 1.0

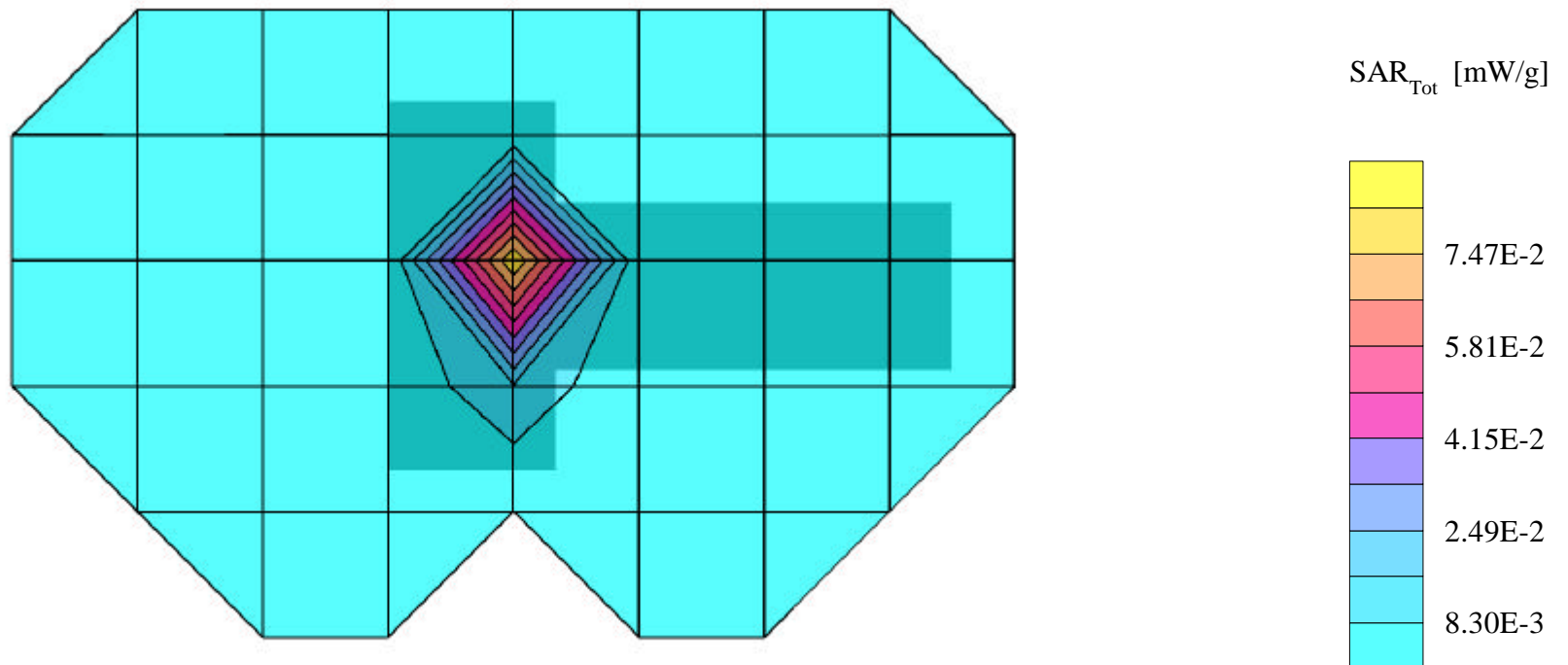
**SAR (1g): 0.0674 mW/g**, SAR (10g): 0.0281 mW/g

Monarch 2.4GHz FHSS Wireless Scanner Model: M06037 w/ Symbol LA-3021-100-US

Low Channel, 2402MHz [CW Mode]; Standard Battery; Ambient Temp. = 22.2°C / Meas. Tissue Temp. = 22.1°C

Conducted Power = 112mW; Spacing = Touch underside of EUT keypad to flat phantom, No Holster/No BeltClip

Test Date -- 05/21/2002 [FCC/OET Bulletin 65 - Supplement C, July 2001]



# MONARCH FCC ID: GU66037LA3021 -- 2.4GHz Body SAR

SAM Phantom; Flat Section; Probe:ET3DV6 - SN1677; ConvF(4.00,4.00,4.00)

Med. Parameters 2450 MHz Muscle:  $\sigma = 1.98$  mho/m  $\epsilon_r = 52.2$   $\rho = 1.00$  g/cm<sup>3</sup>; Antenna Position -- Out; Crest Factor 1.0

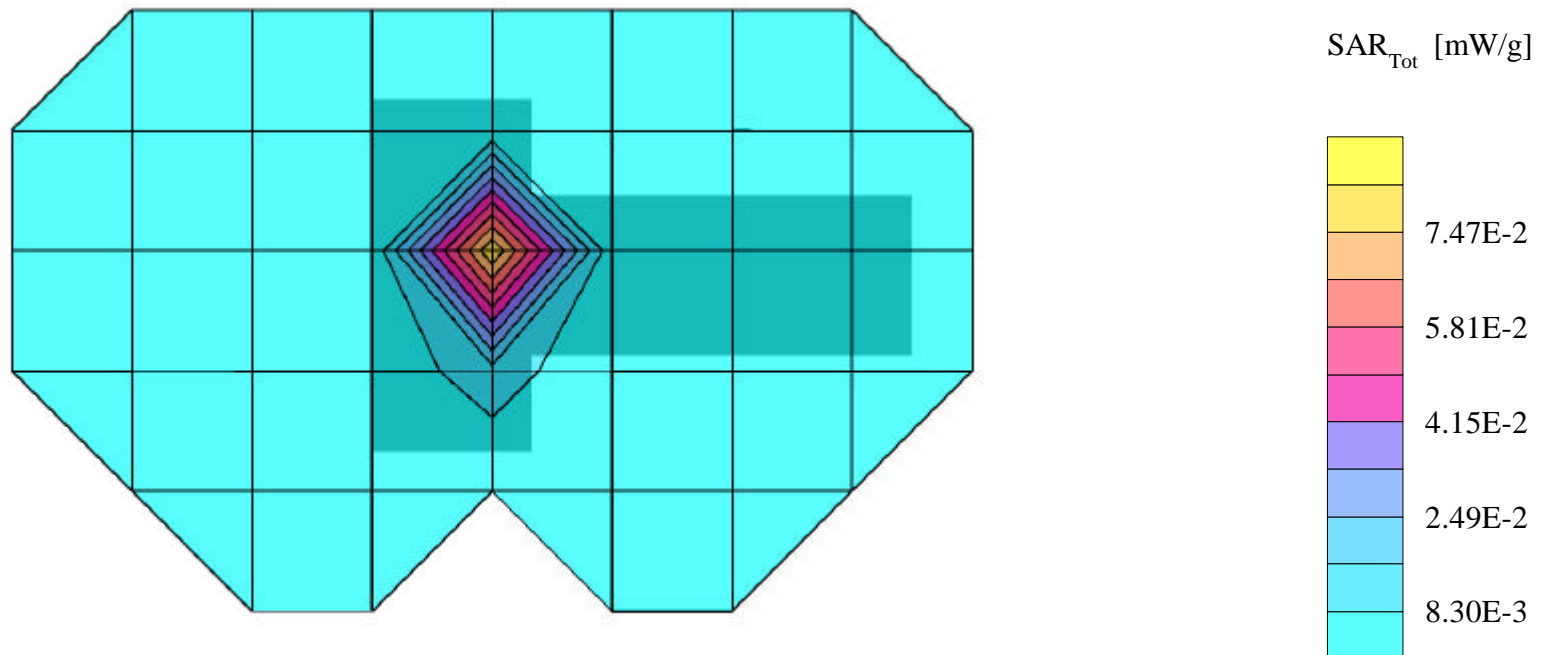
**SAR (1g): 0.0851 mW/g, SAR (10g): 0.0289 mW/g**

Monarch 2.4GHz FHSS Wireless Scanner Model: M06037 w/ Symbol LA-3021-100-US

Mid Channel, 2441MHz [CW Mode]; Standard Battery; Ambient Temp. = 22.2°C / Meas. Tissue Temp. = 22.1°C

Conducted Power = 112mW; Spacing = Touch underside of EUT keypad to flat phantom, No Holster/No BeltClip

Test Date -- 05/21/2002 [FCC/OET Bulletin 65 - Supplement C, July 2001]



# MONARCH FCC ID: GU66037LA3021 -- 2.4GHz Body SAR

SAM Phantom; Flat Section; Probe:ET3DV6 - SN1677; ConvF(4.00,4.00,4.00)

Med. Parameters 2450 MHz Muscle:  $\sigma = 1.98$  mho/m  $\epsilon_r = 52.2$   $\rho = 1.00$  g/cm<sup>3</sup>; Antenna Position -- Out; Crest Factor 1.0

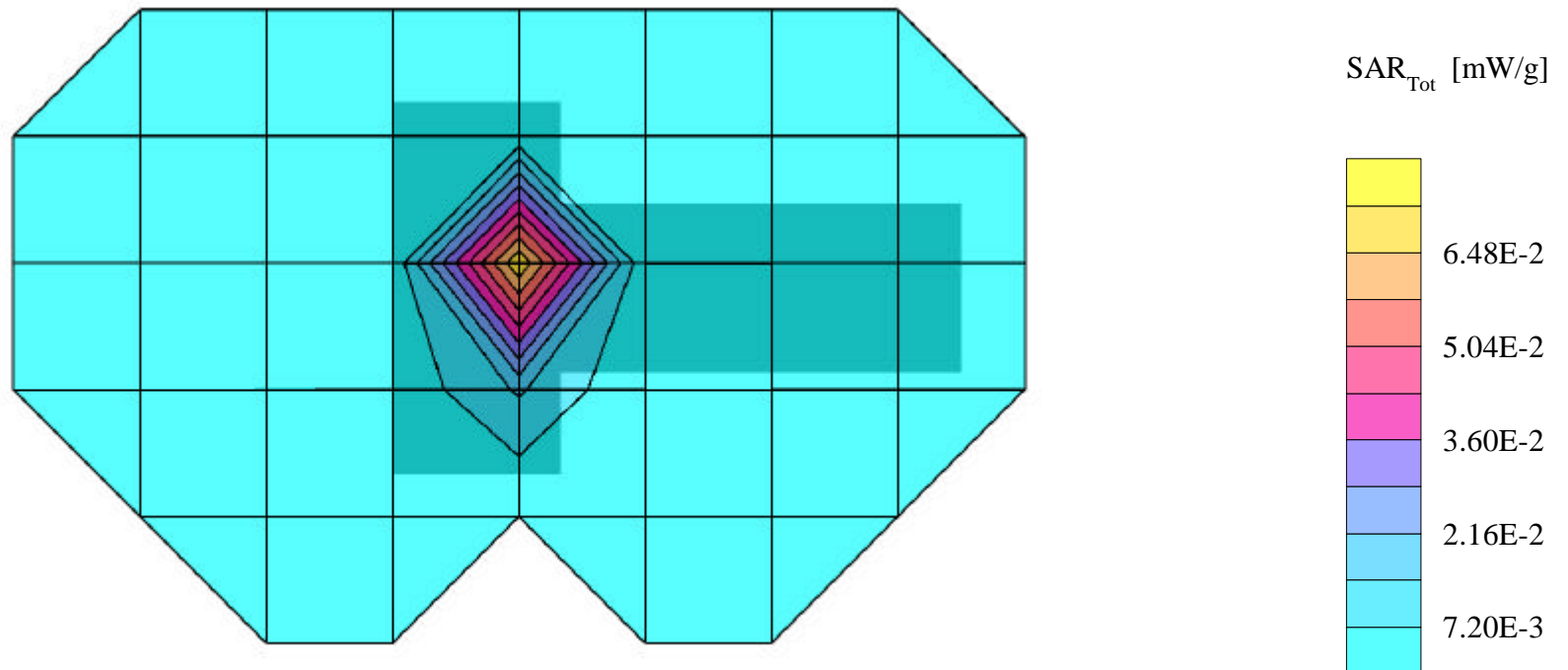
**SAR (1g): 0.0825 mW/g, SAR (10g): 0.0329 mW/g**

Monarch 2.4GHz FHSS Wireless Scanner Model: M06037 w/ Symbol LA-3021-100-US

High Channel, 2480MHz [CW Mode]; Standard Battery; Ambient Temp. = 22.2°C / Meas. Tissue Temp. = 22.1°C

Conducted Power = 112mW; Spacing = Touch underside of EUT keypad to flat phantom, No Holster/No BeltClip

Test Date -- 05/21/2002 [FCC/OET Bulletin 65 - Supplement C, July 2001]



# MONARCH FCC ID: GU66037LA3021 -- 2.4GHz Body SAR

SAM Phantom; Flat Section; Probe:ET3DV6 - SN1677; ConvF(4.00,4.00,4.00)

Med. Parameters 2450 MHz Muscle:  $\sigma = 1.98 \text{ mho/m}$   $\epsilon_r = 52.2$   $\rho = 1.00 \text{ g/cm}^3$ ; Antenna Position -- Out; Crest Factor 1.0

**SAR (1g): 0.0851 mW/g, SAR (10g): 0.0289 mW/g**

Monarch 2.4GHz FHSS Wireless Scanner Model: M06037 w/ Symbol LA-3021-100-US

Mid Channel, 2441MHz [CW Mode]; Standard Battery; Ambient Temp. = 22.2°C / Meas. Tissue Temp. = 22.1°C

Conducted Power = 112mW; Spacing = Touch underside of EUT keypad to flat phantom, No Holster/No BeltClip

Test Date -- 05/21/2002 [FCC/OET Bulletin 65 - Supplement C, July 2001]

