

Customized

Application Result

Customer	SEWOO Tech
Order	Set matching
Model No.	LK-P20
APP. Type	Mini Printer
Antenna	ALA931C5

1st Report

April 22, 2008

	WRITTEN	CHECKED	APPROVED
AMOTECH			

<p>AMOTECH CO., LTD. Microwave Research & Development Laboratory Contact : Cho Jin-Sang : meore2006@amotech.co.kr</p>
--

Notes

The contents of this data sheet are subject to change without notice.

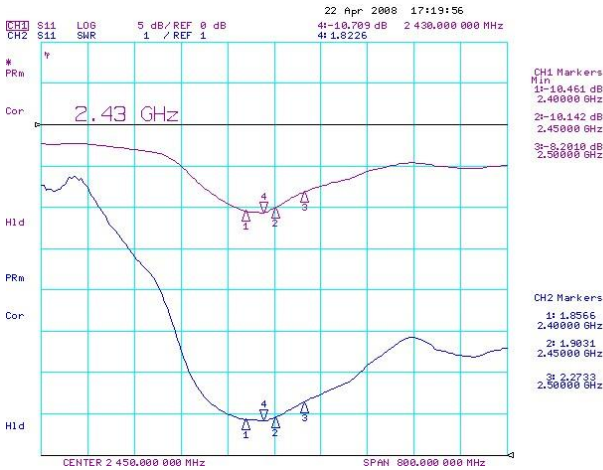
Please confirm the layout on the PCB and the SET conditions when placing your order.



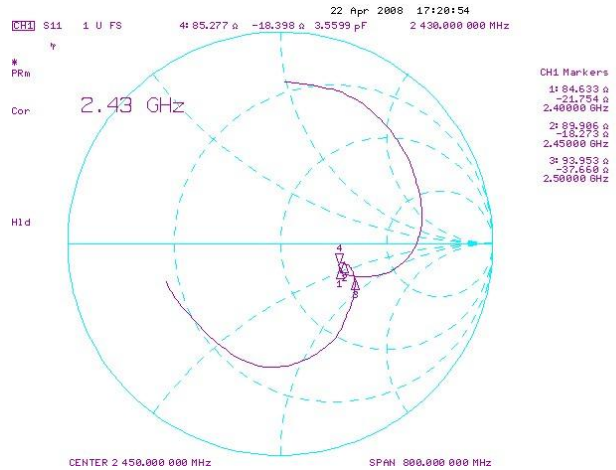
1. [Step #1-1] ALA931C5

- Condition: Set
- Matching value: Series C = 1.8pF, shunt L = 6.8nH

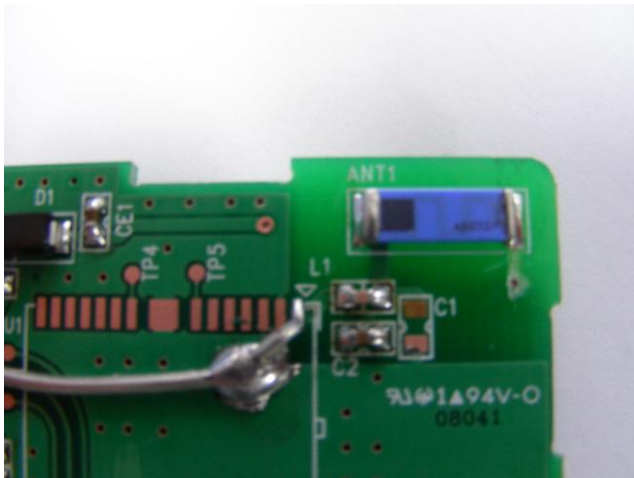
1) S11



2) Smithchart



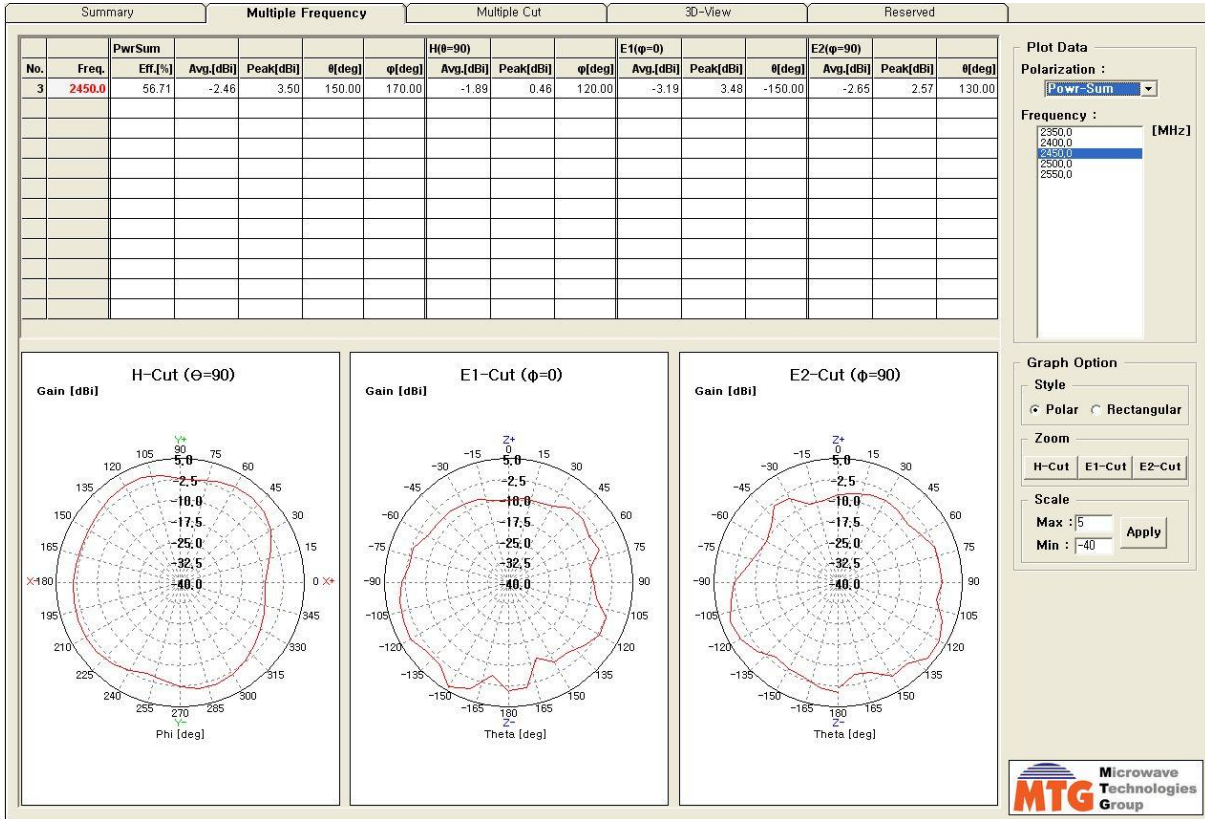
3) Layout (ALA931C5)



4) 3D Passive Gain

Frequency	Efficiency(%)	Ave.Gain(dBi)	
2400 MHz	24.19	-6.16	
2400 MHz	33.91	-4.70	
2450 MHz	33.83	-4.71	
2500 MHz	29.10	-5.36	
2550 MHz	29.06	-5.37	

Radiation Pattern_2D



Radiation Pattern_3D

