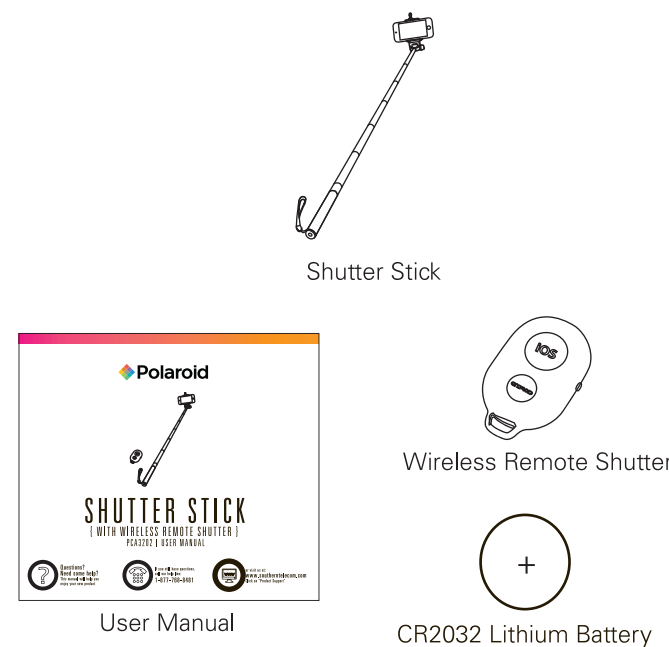


SELFIE STICK AND CLICKER

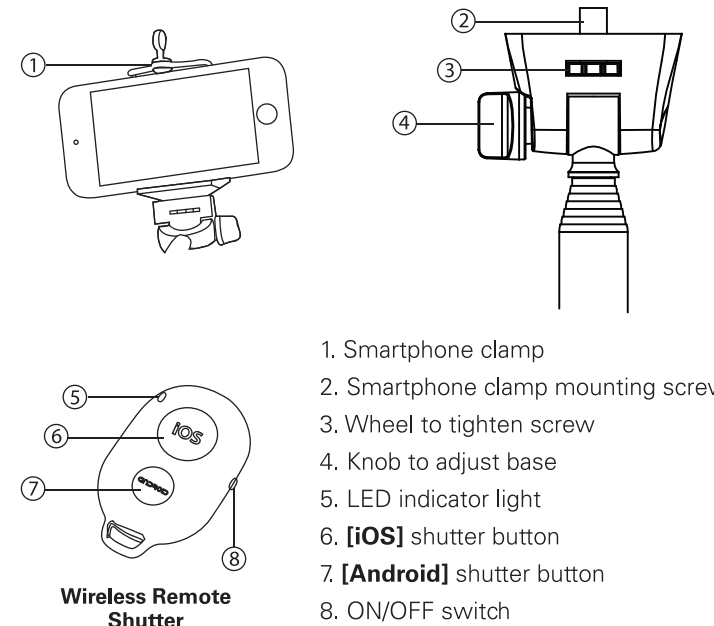
(WITH WIRELESS REMOTE SHUTTER)
PCA3202 | USER MANUAL LP23

- Questions? Need some help?** This manual will help you enjoy your new product.
- If you still have questions, call our help line: 1-877-768-8481
- or visit us at: www.southern-telem.com Click on "Product Support"

IN THE BOX



LOCATION OF CONTROLS



1. Smartphone clamp
2. Smartphone clamp mounting screw
3. Wheel to tighten screw
4. Knob to adjust base
5. LED indicator light
6. [iOS] shutter button
7. [Android] shutter button
8. ON/OFF switch

INSERTING THE BATTERY



The battery for the Wireless Remote Shutter (1 CR2032 lithium battery) is included.

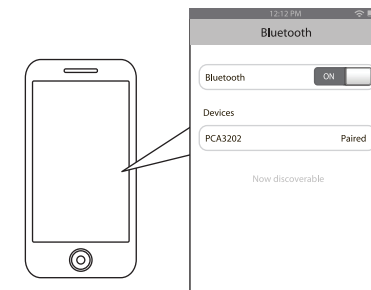
1. To insert the battery, push and slide out the battery door on the remote control.
2. Insert the battery with the polarity "+" facing up.
3. Slide the battery door back into place.

PAIRING THE SHUTTER STICK

1. Slide the power switch on the Wireless Remote Shutter to the ON position.
2. The LED indicator light will flash BLUE.
3. Keep the remote and Bluetooth enabled device within 3 feet of each other during the pairing process.
4. Set your Bluetooth enabled device to search for Bluetooth devices.

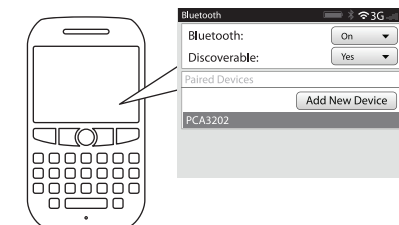
If there are no paired devices in range when the Shutter Stick is turned on, it will go into pairing mode automatically. If a paired device is in range, the Monopod will connect to it automatically.

- On an iPhone**
- Go to SETTINGS > BLUETOOTH (Make sure Bluetooth is turned ON)

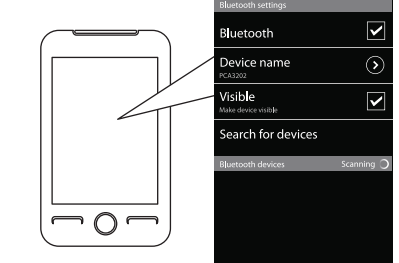


PAIRING THE SHUTTER STICK (cont'd)

- On a Blackberry**
- Go to SETTINGS/OPTIONS > BLUETOOTH
 - Enable BLUETOOTH

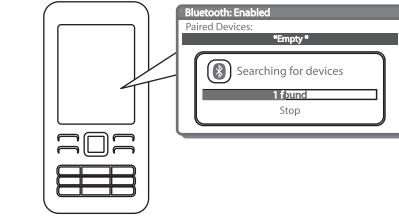


- On an Android Phone**
- Go to SETTINGS > BLUETOOTH > MENU > Search for devices (Make sure Bluetooth is turned ON)



PAIRING THE SHUTTER STICK (cont'd)

- On other Cell Phones/Devices**
- Review the instruction manual that came with your phone/device.



5. When the Bluetooth enabled device finds the Shutter Stick, select "PCA3202" from the list of found devices.
6. If required, enter the password 0000. Select OK or Yes to pair the two units.
7. After a successful registration, the LED indicator light will shut off.

NOTE: If you would like to connect the Shutter Stick to another device, you must unpair the Shutter Stick from the currently paired device first. On your device's Bluetooth settings, select "PCA3202"; then select "unpair". When the Shutter Stick has been unpaired, turn it OFF and then ON again to enter pairing mode again.

The screenshots above are typical of many Bluetooth enabled devices in the market today, and are used to assist in the explanation of the pairing process. Your Bluetooth enabled device's interface and interaction with the Shutter Stick may slightly differ from the illustrations above.

USING THE SHUTTER STICK

1. Attach the phone clamp to the mounting screw by rotating the wheel until it is tight.
2. Put your smartphone in the phone clamp. The spring clamp will keep your smartphone securely in place.
3. Loosen the knob on the base to adjust the angle of the smartphone clamp, then tighten it to secure the clamp to the base.
4. Enter the camera app on your smartphone.
5. In your smartphone's camera app, switch the picture type to "Selfie" (front facing camera).

NOTE: You can take "selfies," take normal pictures, or record videos. Choose the settings in your smartphone's camera app.

USING THE SHUTTER STICK (cont'd)

6. Extend the Shutter Stick to the desired length.
7. Focus on yourself and press the appropriate shutter button on the remote.
 - Use the [iOS] button (1) if your smartphone is an iPhone.
 - Use the [Android] button (2) if your smartphone uses the Android operating system.

NOTE: On some Android phones, you may need to use the [iOS] shutter button to take pictures or video. If the [Android] shutter button does not work, then use the [iOS] shutter button.

IMPORTANT: If you are trying to take pictures and you see the volume control bar on your phone, this is because the Shutter Stick uses the volume frequency to take pictures. If this happens, open your smartphone's CAMERA APP settings, select "Volume Button Options" and select "Capture." Now the shutter button will take pictures.

TROUBLESHOOTING

My Bluetooth device is not able to pair with the Shutter Stick.

1. Make sure the Wireless Remote Shutter is turned ON before beginning the pairing process.
2. Keep the Wireless Remote Shutter and Bluetooth enabled device within 3 feet of each other during the pairing process.
3. The LED indicator light will flash BLUE.
4. Check that YOUR device's Bluetooth feature is turned ON.
5. Try repeating the pairing process. See "Pairing the Shutter Stick."

I cannot get the Shutter Stick into pairing mode.

1. Make sure the Wireless Remote Shutter is turned ON before beginning the pairing process.
2. The LED indicator light will flash BLUE.
3. The Shutter Stick is now in pairing mode.

The shutter button does not take pictures, I see the volume control on the phone.

1. The Shutter Stick uses the volume frequency to take pictures. If this happens, open your smartphone's CAMERA APP settings, select "Volume Button Options" and select "Capture." Now the shutter button will take pictures.

LIABILITY DISCLAIMER

IN NO EVENT, UNDER ANY CAUSE OF ACTION OF THEORY OF LIABILITY, SHALL SOUTHERN TELECOM ITS DISTRIBUTORS OR SUPPLIERS BE LIABLE TO YOU OR ANY THIRD PARTY FOR ANY INDIRECT, INCIDENTAL, CONSEQUENTIAL, SPECIAL, EXEMPLARY OR PUNITIVE DAMAGES, OF ANY NATURE WHATSOEVER, ARISING OUT OF THE USE OF OR INABILITY TO USE ANY SOUTHERN TELECOM PRODUCT INCLUDING, WITHOUT LIMITATION, PROPERTY DAMAGE, LOSS OF VALUE OF THE SOUTHERN TELECOM PRODUCT OR ANY THIRD PARTY PRODUCTS THAT ARE USED IN OR WITH THE SOUTHERN TELECOM PRODUCT, OR LOSS OF USE OF THE SOUTHERN TELECOM PRODUCT OR ANY THIRD PARTY PRODUCTS THAT ARE USED IN OR WITH THE SOUTHERN TELECOM PRODUCT, EVEN IF SOUTHERN TELECOM HAS BEEN ADVISED OF THE POSSIBILITY OF SUCH DAMAGES, WITHOUT LIMITING THE FOREGOING, YOU UNDERSTAND AND AGREE THAT SOUTHERN TELECOM HAS NO LIABILITY FOR ANY DAMAGE OR DESTRUCTION TO CONSUMER ELECTRONICS DEVICES OR OTHER PERSONAL PROPERTY THAT ARE CONTAINED INSIDE OR OUTSIDE THE SOUTHERN TELECOM PRODUCTS, INCLUDING, WITHOUT LIMITATION, LAPTOPS, CELLULAR PHONES, OR OTHER HANDHELD DEVICES, OR ANY LOSS OF DATA CONTAINED IN THE FOREGOING DEVICES, NOTWITHSTANDING ANY DAMAGES THAT YOU MIGHT INCUR FOR ANY REASON WHATSOEVER INCLUDING, WITHOUT LIMITATION, ALL DAMAGES REFERENCED HEREIN AND ALL DIRECT OR GENERAL DAMAGES IN CONTRACT, TORT (INCLUDING NEGLIGENCE) OR OTHERWISE, THE ENTIRE AGGREGATE LIABILITY OF SOUTHERN TELECOM AND ANY OF ITS DISTRIBUTORS AND/OR SUPPLIERS SHALL BE LIMITED TO THE AMOUNT ACTUALLY PAID BY YOU FOR THE SOUTHERN TELECOM PRODUCT GIVING RISE TO LIABILITY. SOME STATES AND/OR JURISDICTIONS DO NOT ALLOW THE EXCLUSION OR LIMITATION OF INCIDENTAL OR CONSEQUENTIAL DAMAGES, SO THE ABOVE LIMITATIONS OR EXCLUSIONS MAY NOT APPLY TO YOU. THE LIMITATIONS OF LIABILITY SET FORTH ABOVE SHALL APPLY TO THE MAXIMUM EXTENT PERMITTED UNDER APPLICABLE LAW.

LIMITED WARRANTY

This product as supplied and distributed new by AIT, Inc. ("AIT") to the original consumer purchaser is warranted by AIT against defects in material and workmanship for a period of six (6) months from your date of purchase ("Warranty"). In the unlikely event that this product is defective, or does not perform properly, you may within one year from your original date of purchase return it to the authorized service center for repair or exchange.

- TO OBTAIN WARRANTY SERVICE:**
- Provide proof of the date of purchase within the package (Dated bill of sale).
 - Prepay all shipping costs to the authorized service center, and remember to insure your return.
 - Include a return shipping address (no P.O. Boxes), a telephone contact number, and the defective unit within the package.
 - Describe the defect or reason you are returning the product.

Your product will be repaired or replaced, at our option, for the same or similar model of equal value if examination by the service center determines this product is defective. Products received damaged as a result of shipping, will require you to file a claim with the carrier.

The shipping address of the authorized service center is:
AIT, Inc.
AIT, Inc. Customer Service (2nd Floor)
14-C 53rd Street
Brooklyn, NY 11232

IN NO EVENT WILL AIT, ITS MANUFACTURERS, DISTRIBUTORS OR PLR IP HOLDINGS, LLC BE LIABLE FOR ANY INCIDENTAL, DIRECT INDIRECT, SPECIAL, PUNITIVE OR CONSEQUENTIAL DAMAGES (SUCH AS, BUT NOT LIMITED TO, DAMAGES FOR LOSS OF PROFITS, BUSINESS SAVINGS, DATA OR RECORDS) RELATED TO THIS PRODUCT, EXCEPT AS STATED HEREIN. NO OTHER WARRANTIES SHALL APPLY.

- Questions? Need some help?** This manual will help you enjoy your new product.
- If you still have questions, call our help line: 1-877-768-8481
- or visit us at: www.southern-telem.com Click on "Product Support"

PLEASE READ THE FOLLOWING INFORMATION CAREFULLY: This equipment has been tested and found to comply with the limits for a Class B digital device, pursuant to part 15 of the FCC Rules. These limits are designed to provide reasonable protection against harmful interference to radio or television reception. This equipment does cause harmful interference to radio or television reception, which can be determined by turning the equipment off and the user is encouraged to try to correct the interference by one or more of the following measures: Reorient or relocate the receiving antenna. Increase the separation between the equipment and receiver. Connect the equipment into an outlet on a circuit different from that to which the receiver is connected. Consult the dealer or an experienced radio/TV technician for help.

CAUTION: Any changes or modifications to this device not explicitly approved by manufacturer could void your authority to operate the equipment.

Note: This equipment has been tested and found to comply with the limits for a Class B digital device, pursuant to part 15 of the FCC Rules. These limits are designed to provide reasonable protection against harmful interference to radio or television reception. This equipment does cause harmful interference to radio or television reception, which can be determined by turning the equipment off and the user is encouraged to try to correct the interference by one or more of the following measures: Reorient or relocate the receiving antenna. Increase the separation between the equipment and receiver. Connect the equipment into an outlet on a circuit different from that to which the receiver is connected. Consult the dealer or an experienced radio/TV technician for help.

PLEASE READ THE FOLLOWING INFORMATION CAREFULLY: This equipment has been tested and found to comply with the limits for a Class B digital device, pursuant to part 15 of the FCC Rules. These limits are designed to provide reasonable protection against harmful interference to radio or television reception. This equipment does cause harmful interference to radio or television reception, which can be determined by turning the equipment off and the user is encouraged to try to correct the interference by one or more of the following measures: Reorient or relocate the receiving antenna. Increase the separation between the equipment and receiver. Connect the equipment into an outlet on a circuit different from that to which the receiver is connected. Consult the dealer or an experienced radio/TV technician for help.

