

SBT655 User Manual

FRONT

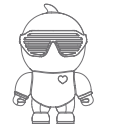
**SHARPER
IMAGE**

Bluetooth Speaker

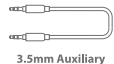


User Guide SBT655

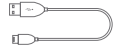
In the Box



Bluetooth Speaker

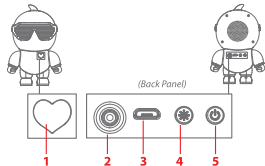


3.5mm Auxiliary Cable



Micro-USB Charging Cable

Location of Controls

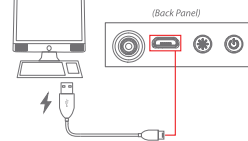


1. LED Indicator
2. 3.5mm Auxiliary Input Jack
3. Micro-USB Charging Port
4. [Power Cycle] Button: Press to cycle through the light modes
5. [Power ON/OFF] Button: Power speaker ON/OFF

Charging the Speaker

Attach the small connector of the supplied micro-USB cable to the micro-USB charging port on the back of the speaker. Attach the large connector to a USB port on a computer, USB charging device, or **SV USB adapter** (not included) and plug into a wall socket.

The LED indicator will turn **RED** while charging and turn off when charged.



NOTE: A tone will be heard when the speaker is low on battery.

Using the Speaker

i Make sure you charge your speaker for at least 3-5 hours before using them for the first time.

Powering ON/OFF

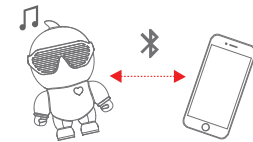
- Long press the [Power ON/OFF] button to turn the speaker ON. A tone will be heard indicating the speaker has power.
- Long press the [Power ON/OFF] button to turn the speaker OFF.

Using the Lights

- Press the [Power Cycle] button on the back panel of the speaker to cycle through the 4 light modes.

Playing Music

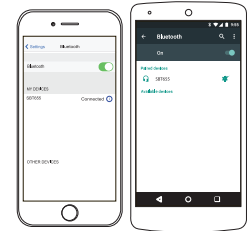
To enjoy music wirelessly on your speaker, make sure you are paired to a Bluetooth-enabled device. Once paired, you can control the media playback and volume adjustment with the controls on your paired device.



i If a previously paired device is in range when the speaker is turned on, the speaker will connect to it automatically.

iOS or Android Devices

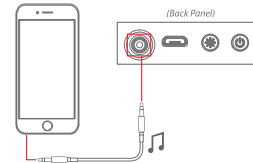
- Go to **Settings** -> **Bluetooth**



i The screenshots above are typical of many Bluetooth-enabled devices in the market today, and are used to assist in the explanation of the pairing process. Your Bluetooth-enabled device's interface and interaction with the speaker may differ slightly from the illustrations above.

Using with a Wired Device

Attach one connector of the supplied 3.5mm auxiliary cable to the auxiliary input jack on the back of the speaker. Attach the other connector to the headphone jack on your media-playing device.



i Connecting the audio cable will override Bluetooth mode. If it is disabled. When the cable is disconnected, the speaker will automatically reconnect to the last paired device if Bluetooth mode is enabled.

BACK

Legal Information

READ CAREFULLY AND KEEP THIS MANUAL

FCC Statement

This equipment has been tested and found to comply with the limits for a Class B digital device, pursuant to part 15 of the FCC Rules. These limits are designed to provide reasonable protection against harmful interference in a residential installation. This equipment generates, uses and can radiate radio frequency energy and, if not installed and used in accordance with the instructions, may cause harmful interference to radio communications. However, there is no guarantee that interference will not occur in a particular installation. If this equipment does cause harmful interference to radio or television reception, which can be determined by turning the equipment off and on, the user is encouraged to try to correct the interference by one or more of the following measures:

- Reorient or relocate the receiving antenna.
- Increase the separation between the equipment and receiver.
- Connect the equipment into an outlet on a circuit different from that to which the receiver is connected.
- Consult the dealer or an experienced radio/TV technician for help.

Caution: Any changes or modifications to this device not explicitly approved by manufacturer could void your authority to operate this equipment.

This device complies with part 15 of the FCC Rules. Operation is subject to the following two conditions: (1) This device may not cause harmful interference, and (2) this device must accept any interference received, including interference that may cause undesired operation.

RF Exposure Information

The device has been evaluated to meet general RF exposure requirement. The device can be used in portable exposure condition without restriction.

WARNING Li-Ion Battery Inside

This product is fitted with a Li-ion battery. Do not damage, open, or dismantle the battery and do not use it in damp and/or corrosive conditions. Use only with compatible chargers. Never dispose of batteries in a fire, and never expose them to high temperatures. Do not expose the product to temperatures exceeding 60°C (140°F).



The crossed-out garbage bin symbol means that you must not dispose of this product together with unsorted household waste.

Rain/Moisture Warning

- Do not expose the unit to extreme temperatures (heat or cold), open flames, humid conditions, or wet conditions.
- Do not submerge in water.
- Do not open this product or attempt to repair the unit yourself should it not be working.

Questions and Customer Support

For further assistance or troubleshooting, please visit our website:

SouthernTelecom.com
Click on **Product Support**

Limited Warranty

90 Days Limited Warranty

In the unlikely event that this product is defective, or does not perform properly, you may within ninety (90) days from your original date of purchase return it to the authorized service center for repair or exchange.

TO OBTAIN WARRANTY SERVICE:

- Go to our website portal to receive an SRO number. (dated bill of sale).
- Prepay all shipping costs to the authorized service center, and remember to insure your return.
- Include a return shipping address (no P.O. Boxes), a telephone contact number, and the defective unit within the package.
- Describe the defect or reason you are returning the product.

Your product will be repaired or replaced, at our option, for the same or similar model of equal value if examination by the service center determines this product is defective. Products received damaged as a result of shipping will require you to file a claim with the carrier.

The shipping address of the authorized service center is:

Customer Support Dept. 36
Southern Telecom
400 Kennedy Drive
Sayreville, NJ 08872

Should you have any questions or problems concerning this product, please visit our website:

SouthernTelecom.com
Click on **Product Support**

Warranty Service Not Provided

This warranty does not cover damage resulting from accident, misuse, abuse, improper installation or operation, lack of reasonable care, and unauthorized modification. This warranty is voided in the event any unauthorized person opens, alters or repairs this product. All products being returned to the authorized service center for repair must be suitably packaged.

Limitation of Warranty

THE WARRANTY STATED ABOVE IS THE ONLY WARRANTY APPLICABLE TO THIS PRODUCT. ALL OTHER WARRANTIES, EXPRESS OR IMPLIED INCLUDING ALL IMPLIED WARRANTIES OF MERCHANTABILITY OR FITNESS FOR A PARTICULAR PURPOSE ARE HEREBY DISCLAIMED. NO VERBAL, OR WRITTEN INFORMATION GIVEN BY AT, INC. ITS AGENTS, OR EMPLOYEES SHALL CREATE A WARRANTY OR IN ANY WAY INCREASE THE SCOPE OF THIS WARRANTY.

REPAIR OR REPLACEMENT AS PROVIDED UNDER THIS WARRANTY IS THE EXCLUSIVE REMEDY OF THE CONSUMER. AT, INC. SHALL NOT BE LIABLE FOR INCIDENTAL OR CONSEQUENTIAL DAMAGES RESULTING FROM THE USE OF THIS PRODUCT OR ARISING OUT OF ANY BREACH OF ANY EXPRESS OR IMPLIED WARRANTY ON THIS PRODUCT. THIS DISCLAIMER OF WARRANTIES AND LIMITED WARRANTY ARE GOVERNED BY THE LAWS OF THE STATE OF NEW YORK. EXCEPT TO THE EXTENT PROHIBITED BY APPLICABLE LAW, ANY IMPLIED WARRANTY OF MERCHANTABILITY OR FITNESS FOR A PARTICULAR PURPOSE ON THIS PRODUCT IS LIMITED TO THE APPLICABLE WARRANTY PERIOD SET FORTH ABOVE.

Some states do not allow the exclusion nor limitation of incidental or consequential damages, or limitations on how long an implied warranty lasts so the above limitations on exclusions may not apply to you. This warranty gives you specific legal rights, and you also may have other rights that vary from state to state.

2017 Sharper Image® name and logo are registered trademarks. Manufactured, marketed, and distributed under license by Southern Telecom, Inc. Brooklyn, NY 11220. © Sharper Image. All Rights Reserved.

SHARPER IMAGE Printed in China #1_09/2017