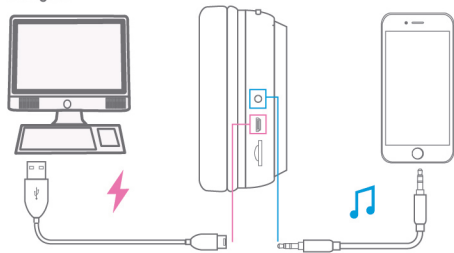


05 Using the Headphones (cont'd)

Charging the Headphones

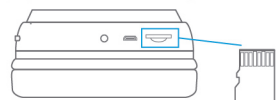
To charge the headphones attach the small end of the micro USB cable to the micro USB port. Connect the large end to your computer or USB charging device. The LED indicator will turn RED while charging and turn off when the headphones are fully charged.



Using a Wired Device

To use the headphones with a wired device, attach the 3.5mm auxiliary cable to the 3.5mm auxiliary jack. Attach the other end to the headphone jack on your media-playing device.

Once plugged in, the headphones will automatically switch to AUX mode. Use your connected device to control media playback and volume adjustment.



NOTE: The micro SD card can only be inserted one direction. The metal contacts should be facing outward. If the card does not go in, try flipping it around and insert again. DO NOT APPLY EXCESSIVE FORCE WHEN INSERTING THE CARD.

Using a Micro SD Card

Insert the micro SD card into the micro SD card slot. Power the headphones ON. Music located on the SD card will automatically play or you can long press the [MODE] button to switch to the SD card.

Use the [II<] [+V<<] [▶▶VI] buttons to control media playback and volume adjustment.

06 Additional Warnings and Precautions

READ THIS MANUAL CAREFULLY AND SAVE

Caution: Any changes or modifications not expressly approved could void the user's authority to operate the equipment.

FCC Part 15:

Note: This equipment has been tested and found to comply with the limits for a Class B digital device, pursuant to part 15 of the FCC Rules. These limits are designed to provide reasonable protection against harmful interference in a residential installation. This equipment generates, uses and can radiate radio frequency energy and, if not installed and used in accordance with the instructions, may cause harmful interference to radio communications. However, there is no guarantee that interference will not occur in a particular installation. If this equipment does cause harmful interference to radio or television reception, which can be determined by turning the equipment off and on, the user is encouraged to try to correct the interference by one or more of the following measures:

- Reorient or relocate the receiving antenna.
- Increase the separation between the equipment and receiver.
- Connect the equipment into an outlet on a circuit different from that to which the receiver is connected.
- Consult the dealer or an experienced radio/TV technician for help.

Caution: Any changes or modifications to this device not explicitly approved by manufacturer could void your authority to operate this equipment.

This device complies with part 15 of the FCC Rules. Operation is subject to the following two conditions: (1) This device may not cause harmful interference, and (2) this device must accept any interference received, including interference that may cause undesired operation.

The device has been evaluated to meet general RF exposure requirement. The device can be used in portable exposure condition without restriction.



07 Limited Warranty

90 Days Limited Warranty

In the unlikely event that this product is defective, or does not perform properly, you may within ninety (90) days from your original date of purchase return it to the authorized service center for repair or exchange.

TO OBTAIN WARRANTY SERVICE:

- Call the Customer Support number located below, or go to our website portal to receive an SRO number.
- Provide proof of the date of purchase within the package (dated bill of sale).
- Prepay all shipping costs to the authorized service center, and remember to insure your return.
- Include a return shipping address (no P.O. Boxes), a telephone contact number, and the defective unit within the package.
- Describe the defect or reason you are returning the product.

Your product will be repaired or replaced, at our option, for the same or similar model of equal value if examination by the service center determines this product is defective. Products received damaged as a result of shipping will require you to file a claim with the carrier.

The shipping address of the authorized service center is:

Customer Service Dept. 36
c/o Southern Telecom
400 Kennedy Drive
Sayreville NJ 08872

Should you have any questions or problems concerning this product, please contact our customer service department at:

Customer Support:
Phone: 1-877-768-8481
Monday-Friday 8AM-10PM(EST)

www.southern telecom.com
Click on "Product Support"

Warranty service not provided

This warranty does not cover damage resulting from accident, misuse, abuse, improper installation or operation, lack of reasonable care, and unauthorized modification. This warranty is voided in the event any unauthorized person opens, alters or repairs this product. All products being returned to the authorized service center for repair must be suitably packaged.

Limitation of Warranty:

THE WARRANTY STATED ABOVE IS THE ONLY WARRANTY APPLICABLE TO THIS PRODUCT. ALL OTHER WARRANTIES, EXPRESS OR IMPLIED (INCLUDING ALL IMPLIED WARRANTIES OF MERCHANTABILITY OR FITNESS FOR A PARTICULAR PURPOSE) ARE HEREBY DISCLAIMED. NO VERBAL OR WRITTEN INFORMATION GIVEN BY AIT, INC. ITS AGENTS, OR EMPLOYEES SHALL CREATE A WARRANTY OR IN ANY WAY INCREASE THE SCOPE OF THIS WARRANTY.

REPAIR OR REPLACEMENT AS PROVIDED UNDER THIS WARRANTY IS THE EXCLUSIVE REMEDY OF THE CONSUMER. AIT, INC. SHALL NOT BE LIABLE FOR INCIDENTAL OR CONSEQUENTIAL DAMAGES RESULTING FROM THE USE OF THIS PRODUCT OR ARISING OUT OF ANY BREACH OF ANY EXPRESS OR IMPLIED WARRANTY ON THIS PRODUCT. THIS DISCLAIMER OF WARRANTIES AND LIMITED WARRANTY ARE GOVERNED BY THE LAWS OF THE STATE OF NEW YORK. EXCEPT TO THE EXTENT PROHIBITED BY APPLICABLE LAW, ANY IMPLIED WARRANTY OF MERCHANTABILITY OR FITNESS FOR A PARTICULAR PURPOSE ON THIS PRODUCT IS LIMITED TO THE APPLICABLE WARRANTY PERIOD SET FORTH ABOVE.

Some states do not allow the exclusion or limitation of incidental or consequential damages, or limitations on how long an implied warranty lasts so the above limitations on exclusions may not apply to you. This warranty gives you specific legal rights, and you also may have other rights that vary from state to state.

Sharper Image, Polaroid
LIMITED TOO

Bluetooth Headphone

LBT652



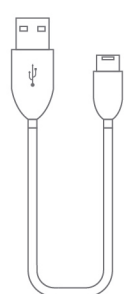
If you have any questions, call 1-877-768-8481 | www.southern telecom.com and click on "Product Support"

FRONT

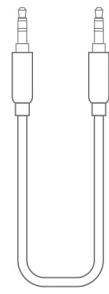
01 In the Box



Headphones

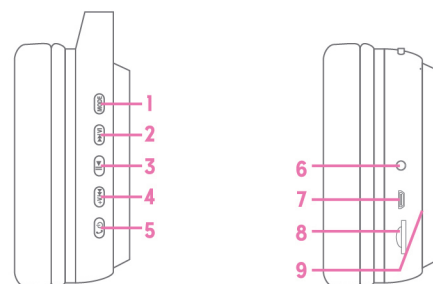


Micro USB
Charging Cable



3.5mm
Auxiliary Cable

02 Location of Controls



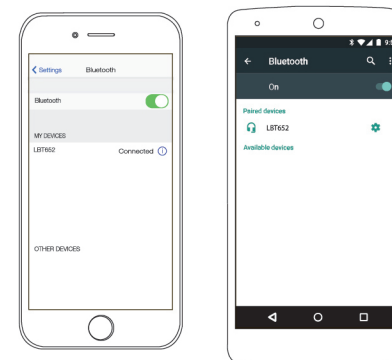
1. [MODE] Button:
Quick Press - Change mode (Bluetooth)
Long Press - Change mode (Micro SD Card)
2. [▶▶VI] Button:
Quick Press - Skip to previous track
Long Press - Decrease volume
3. [II<] Button: Play/pause media playback
4. [+V<<] Button:
Quick Press - Skip to next track
Long Press - Increase volume
5. [ⓁⓄ] Button:
Quick Press -
Long Press - Power ON/OFF
6. 3.5mm Auxiliary Jack
7. Micro USB Charging Port
8. Micro SD Card Slot
9. LED Indicator

03 Pairing the Headphones

1. Press and hold the [ⓁⓄ] button for 6 seconds. The LED indicator will flash BLUE and RED and a voice will be heard.
2. Set your Bluetooth-enabled device to search for Bluetooth devices. When your Bluetooth-enabled device finds the headphones, select "LBT652" from the list of found devices.
3. After a successful pairing, a tone will be heard and the Bluetooth LED indicator will flash BLUE.

On an iPhone or Android Device

• Go to SETTINGS > BLUETOOTH (make sure Bluetooth is turned ON)



The screenshots above are typical of many Bluetooth-enabled devices in the market today, and are used to assist in the explanation of the pairing process. Your Bluetooth-enabled device's interface and interaction with the Bluetooth headphones may differ slightly from the illustrations above.

To maintain the Bluetooth connection, keep your Bluetooth-enabled device within 30 feet of the headphones.

04 Using the Headphones

Powering ON/OFF

- To turn the headphones ON, long press the [ⓁⓄ] button for 2 seconds.
- To turn the headphones OFF, long press the [ⓁⓄ] button for 6 seconds.

Adjusting Volume

- Long press the [▶▶VI] (decrease) and [+V<<] (increase) buttons to adjust volume. A tone will be heard if attempting to increase the volume past it's maximum level.

Changing Modes

- Quick press the [MODE] button to change to Bluetooth input mode.
- Long press the [MODE] button to switch to micro SD card input. After inserting a card and powering the headphones ON, music on the micro SD card will automatically begin to play.

Phone Calls

- Quick press the [ⓁⓄ] button to answer/end phone calls.
- Long press the [ⓁⓄ] button to reject an incoming phone call.
- Double quick press the [ⓁⓄ] button to redial the last number called.

Playing Music

To enjoy music wirelessly on your headphones, make sure that the headphones are properly paired to your Bluetooth-enabled device. If you are pairing the device for the first time, please consult the "Pairing the Headphones" section of this user guide.

Playing/Pausing Music

- Press the [II<] button to play/pause media playback.

Skipping Tracks

- Quick press the [+V<<] button to skip to the next track.
- Quick press the [▶▶VI] button to skip to the previous track.