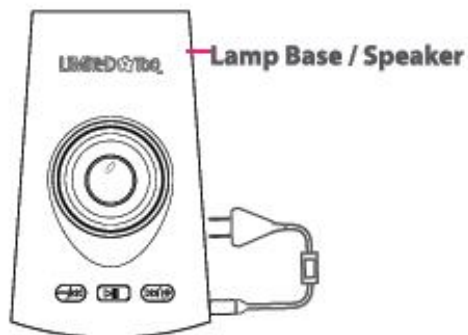
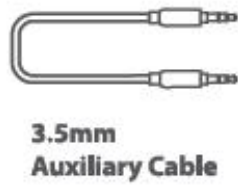
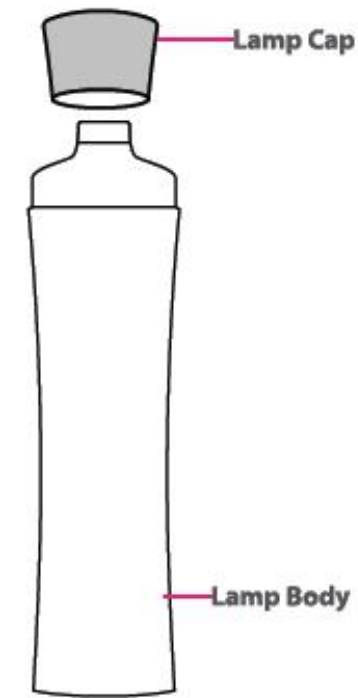
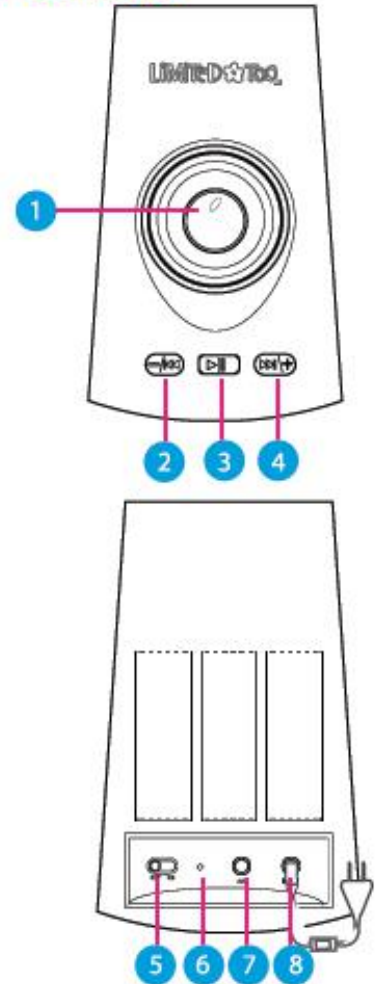


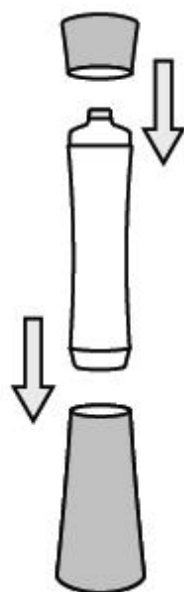
## 01 In the Box



## 02 Location of Controls



### 03 Assembling the Lamp



1. Carefully remove the Glitter Lamp from the packaging and be sure to assemble the lamp on a flat surface.
2. Place the Lamp Body on to the base. Be sure to twist gently until tight.
3. Place the Lamp Cap on top of the Lamp Body.



4. Plug in the lamp and use the power switch to turn ON.



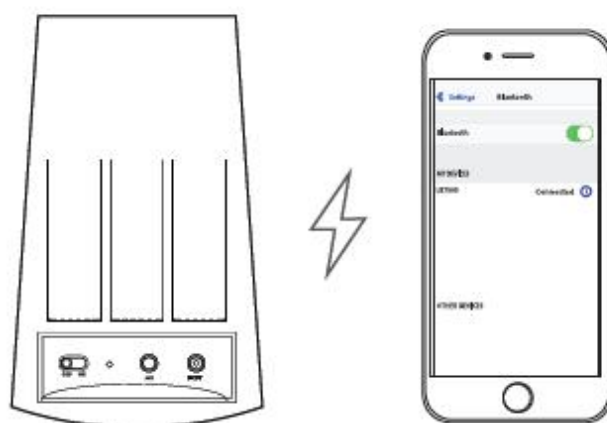
**WARNING:**  
**EXREMELY HOT!!** Do not touch the heating element inside the Lamp Base during or immediately after use.

Lamp Base

Heating Element



### 04 Pairing the Speaker



1. Slide the [ON/OFF] switch to the ON position. A tone is heard and the LED indicator will quickly flash BLUE.
2. Set your mobile phone or other Bluetooth-enabled device to search for the speaker (for detailed instructions for pairing your Bluetooth-enabled device, consult your device's user documentation).
3. Locate LBT503 from the list of found devices.
4. If required, enter the password 0000. Select YES or OK to pair with your device.
5. After a successful pairing, a tone is heard and the LED indicator will slowly flash BLUE.

## 05 Using the Speaker

### Powering the Speaker ON and OFF

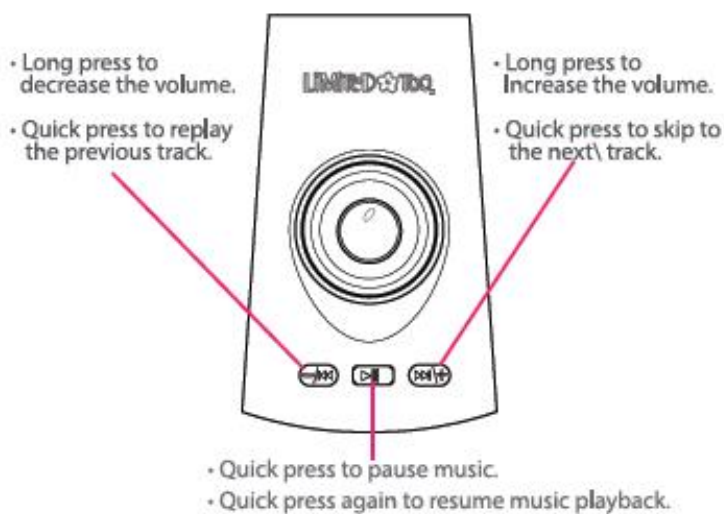
- Slide the [ON/OFF] switch to the right to turn the speaker on.
- Slide the [ON/OFF] switch to the left to turn the speaker off.

### Controlling the Volume

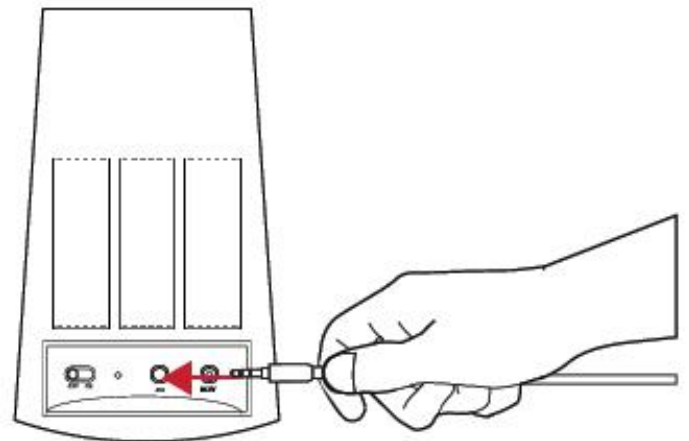
- Long press the [◀] button to decrease the volume.
- Quick press the [▶] button to increase the volume.

### Playing Music

1. Quick press the [◀] button to replay the previous track.
2. Quick press the [▶] button to skip to the next track in your music playlist.
3. Quick press the [⏸] button to pause and resume your music.



## 06 Using the Speaker



### Using as a Wired Speaker

1. Slide the [ON/OFF] switch to the ON position.
2. Connect one end of the 3.5mm auxiliary cable into the AUX port on the speaker. A tone is heard, indicating that the speaker is in AUX mode.
3. Insert the other end of the 3.5mm auxiliary cable into the headphone jack of your smartphone, tablet or MP3 player.

**NOTE:** Use your mobile device to control the volume and music playback.

# 06 Legal Information

## FCC Part 15:

This equipment has been tested and found to comply with the requirements for a Class B digital device under Part 15 of the Federal Communications Commission (FCC) rules. These requirements are intended to provide reasonable protection against harmful interference in a residential installation. This equipment generates, uses and can radiate radio frequency energy and, if not installed and used in accordance with the instructions, may cause harmful interference to radio communications. However, there is no guarantee that interference will not occur in a particular installation. If this equipment does cause harmful interference to radio or television reception, which can be determined by turning the equipment off and on, the user is encouraged to try to correct the interference by one or more of the following measures:

- Re-orient or relocate the receiving antenna.
- Increase the separation between the equipment and receiver.
- Connect the equipment into an outlet on a circuit different from that to which the receiver is connected.
- Consult the dealer or an experienced radio/TV technician for help.

Do not attempt to repair or modify this equipment.

Warning: Changes or modifications to this equipment not expressly approved by the party responsible for compliance could void the user's authority to operate the equipment.

"This device complies with Part 15 of the FCC Rules. Operation is subject to the following two conditions:

- (1) this device may not cause harmful interference, and
- (2) this device must accept any interference received, including interference that may cause undesired operation."



# 07 Safety Information

## **GLITTER LAMP CARE AND CAUTIONS BE SURE TO READ AND SAVE THESE INSTRUCTIONS**

CALL 1-877-768-8481 FOR A REPLACEMENT BOTTLE OR ADAPTOR. DO NOT USE UNAUTHORIZED PRODUCTS IN THIS LAMP.

### **CAUTION**

The Glitter lamp is designed to operate in an average room temperature of 22-25 °c (71.6-77°f). Make sure the Glitter lamp is at room temperature before starting. Always operate the Motion lamp on a firm, stationary surface. Do not operate the lamp on any warm or hot surfaces.

Initial warm up of the Glitter lamp will take 3 to 5 hours. Subsequent warm ups will take less time depending on the room temperature. The Glitter lamp will function best if it is operated no longer than 10 hours at a time. The Glitter lamp's function will be achieved fully after lamp has been used 5 to 6 times.

The lamp should never be operated for more than 24 hours at a time. If operated for more than 24 hours the base can get deformed from heat.

Do not add any fluids or solids to your lamp. The air space at the top of the lamp has been provided to allow for expansion.

Do not place near sources of heat or cold such as heat and air conditioning vents. Always operate the lamp only on room temperature surfaces.

The Glitter lamp operates at a very warm temperature and the vessel is made of glass. Operate out of the reach of small children and pets.

DO not leave the Glitter lamp unattended. do not run the Glitter lamp while sleeping, as this is a novelty item and is not intended to be used as a night light.

The lamp and speaker base will be warm to the touch while in use and after the unit has been turned off/unplugged. Do not touch the lamp's heating element while it is on.

Keep out of the reach of children and pets.

While Glitter lamp is in operation, be sure not to move or shake it in order to avoid permanently damaging the lamp. Glitter lamp should never be heated by any other means, nor should it be cooled artificially. Do not operate the lamp if the glass is cracked or damaged.

If the Glitter lamp is cracked or damaged, disconnect the lamp from the power outlet and clean the surface thoroughly. Clean the affected area thoroughly with soap and water. Remove and wash contaminated clothing.

The space on the top of the lamp is provided for expansion. Do not break the seal of the cap to fill it with liquid or solid. Breaking the seal will void your warranty and ruin the product.

If the external flexible cable or cord of the base is damaged, do not attempt to replace it yourself. It should be replaced by the manufacturer, service agent or a similar qualified person in order to avoid a hazard. Call 1-877-768-8481 for replacement.

# 08 Limited Warranty

## **90 Days Limited Warranty**

In the unlikely event that this product is defective, or does not perform properly, you may within ninety (90) days from your original date of purchase return it to the authorized service center for repair or exchange.

### **TO OBTAIN WARRANTY SERVICE:**

- Call the Customer Support number located below, or go to our website portal to receive an SRO number.
- Provide proof of the date of purchase within the package (dated bill of sale).  
Write the SRO number on the package before shipping.
- Prepay all shipping costs to the authorized service center, and remember to insure your return.
- Include a return shipping address (no P.O. Boxes), a telephone contact number, and the defective unit within the package.
- Describe the defect or reason you are returning the product.

Your product will be repaired or replaced, at our option, for the same or similar model of equal value if examination by the service center determines this product is defective. Products received damaged as a result of shipping will require you to file a claim with the carrier.

The shipping address of the authorized service center is:

 **Southern Telecom, Inc.**  
**Attention: Customer Service (2nd Floor)**  
**14-C 53rd Street**  
**Brooklyn, NY 11232**

Should you have any questions or problems concerning this product, please contact our customer service department at:

Customer Support:



Phone: 1-877-768-8481

Monday-Friday 8AM-10PM(EST)



[www.southerntelecom.com](http://www.southerntelecom.com)

Click on "Product Support"

### **Warranty service not provided**

This warranty does not cover damage resulting from accident, misuse, abuse, improper installation or operation, lack of reasonable care, and unauthorized modification. This warranty is voided in the event any unauthorized person opens, alters or repairs this product. All products being returned to the authorized service center for repair must be suitably packaged.

Limitation of Warranty:

- THE WARRANTY STATED ABOVE IS THE ONLY WARRANTY APPLICABLE TO THIS PRODUCT. ALL OTHER WARRANTIES, EXPRESS OR IMPLIED (INCLUDING ALL IMPLIED WARRANTIES OF MERCHANTABILITY OR FITNESS FOR A PARTICULAR PURPOSE) ARE HEREBY DISCLAIMED. NO VERBAL OR WRITTEN INFORMATION GIVEN BY AIT, INC. IT'S AGENTS, OR EMPLOYEES SHALL CREATE A WARRANTY OR IN ANY WAY INCREASE THE SCOPE OF THIS WARRANTY.



• REPAIR OR REPLACEMENT AS PROVIDED UNDER THIS WARRANTY IS THE EXCLUSIVE REMEDY OF THE CONSUMER. AIT, INC. SHALL NOT BE LIABLE FOR INCIDENTAL OR CONSEQUENTIAL DAMAGES RESULTING FROM THE USE OF THIS PRODUCT OR ARISING OUT OF ANY BREACH OF ANY EXPRESS OR IMPLIED WARRANTY ON THIS PRODUCT. THIS DISCLAIMER OF WARRANTIES AND LIMITED WARRANTY ARE GOVERNED BY THE LAWS OF THE STATE OF NEW YORK. EXCEPT TO THE EXTENT PROHIBITED BY APPLICABLE LAW, ANY IMPLIED WARRANTY OF MERCHANTABILITY OR FITNESS FOR A PARTICULAR PURPOSE ON THIS PRODUCT IS LIMITED TO THE APPLICABLE WARRANTY PERIOD SET FORTH ABOVE.

Some states do not allow the exclusion nor limitation of incidental or consequential damages, or limitations on how long an implied warranty lasts so the above limitations on exclusions may not apply to you. This warranty gives you specific legal rights, and you also may have other rights that vary from state to state.