

Load Actuator WBI

Logic Board

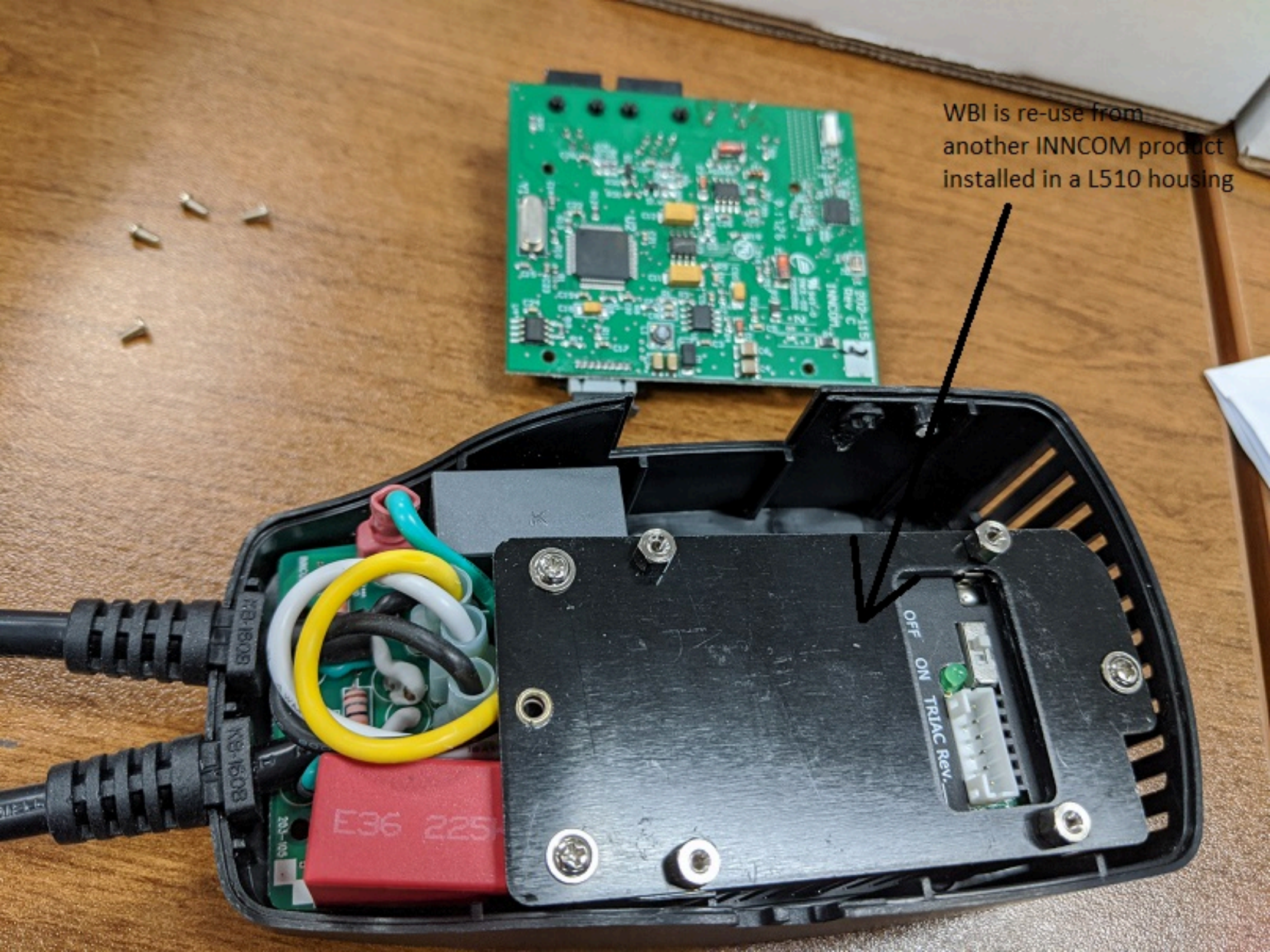
Radio

POWER Board



E36 225

PCB Component Labels:
R30, R27, R29, R32, R31, R12, R13, R10, R19, R15, R11, R5, R4, R3, R2, R1, R0
C2, C12, C13, C10, C9, C8, C7, C6, C5, C4, C3, C23, C19, C18, C17, C15, C14, C13, C12, C11, C10, C9, C8, C7, C6, C5, C4, C3, C2, C1
U2, U4
Y1
P.1.2.5
M 94V-0
BX-02
288
INNC01
202-115
Rev C

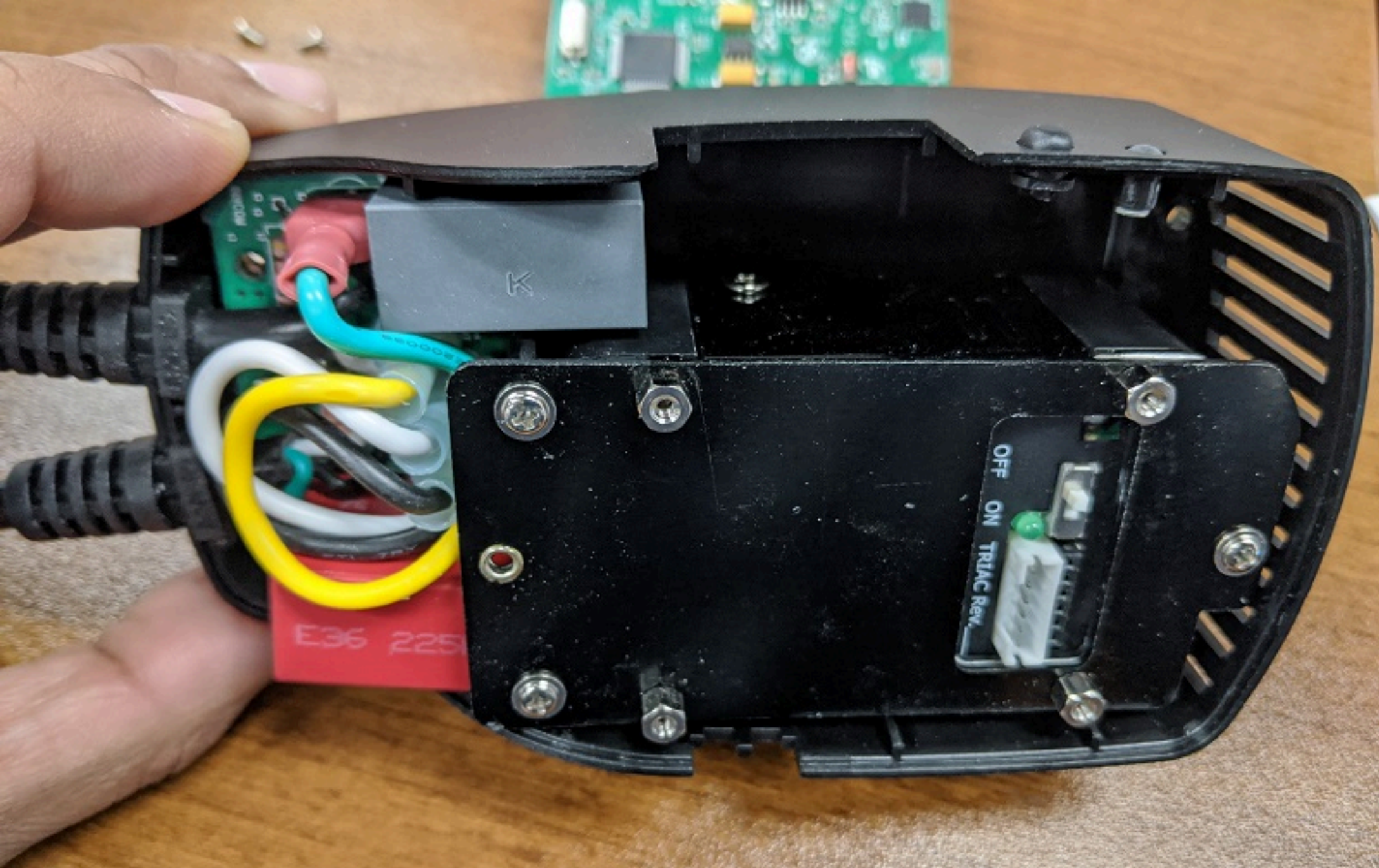


WBI is re-use from another INNCOM product installed in a L510 housing



E36 225

OFF ON TR1AC Rev.





Triac Actuator Front View



Triac Actuator Back View



Triac Actuator



Triac Actuator

TRIAC LOAD ACTUATOR PCBs

