

Load Actuator WBI

Logic Board

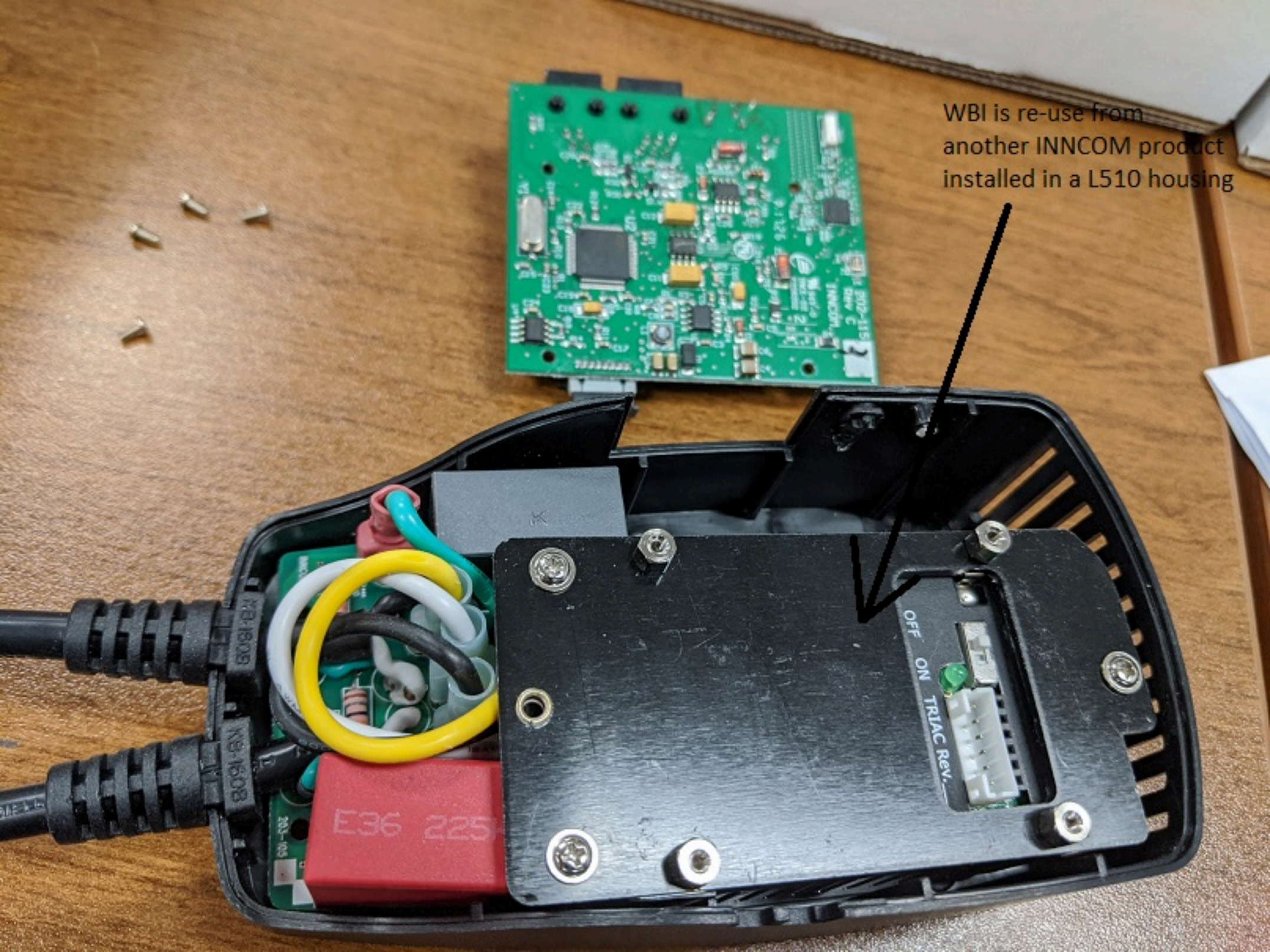
Radio

POWER Board



E36 225

PCB Component Labels:
R30, R27, R29, R32, R31, R12, R13, R10, R19, R15, R11, R5, R4, R3, R2, R1, R0
C2, C12, C13, C10, C9, C8, C7, C6, C5, C4, C3, C23, C19, C18, C17, C16, C15, C14, C13, C12, C11, C10, C9, C8, C7, C6, C5, C4, C3, C2, C1
U1, U2, U3, U4
Y1
P1, P2, P3, P4, P5, P6, P7, P8, P9, P10, P11, P12, P13, P14, P15, P16, P17, P18, P19, P20, P21, P22, P23, P24, P25, P26, P27, P28, P29, P30, P31, P32, P33, P34, P35, P36, P37, P38, P39, P40, P41, P42, P43, P44, P45, P46, P47, P48, P49, P50, P51, P52, P53, P54, P55, P56, P57, P58, P59, P60, P61, P62, P63, P64, P65, P66, P67, P68, P69, P70, P71, P72, P73, P74, P75, P76, P77, P78, P79, P80, P81, P82, P83, P84, P85, P86, P87, P88, P89, P90, P91, P92, P93, P94, P95, P96, P97, P98, P99, P100
M 94V-0
BX-02
288
INNOVATION
Rev C
202-115

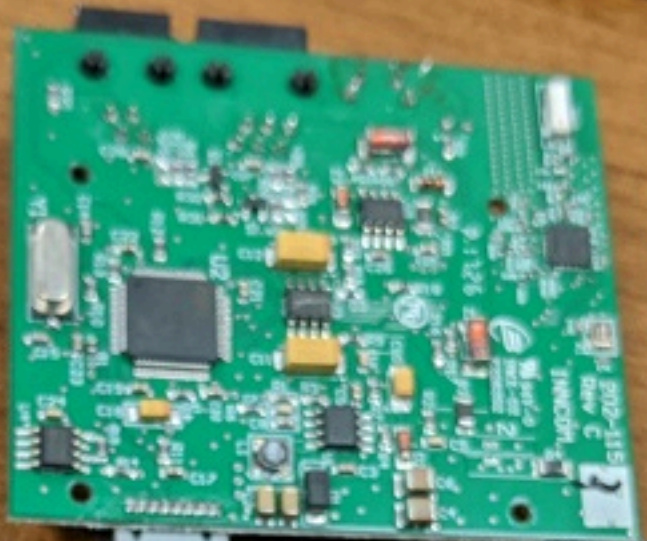


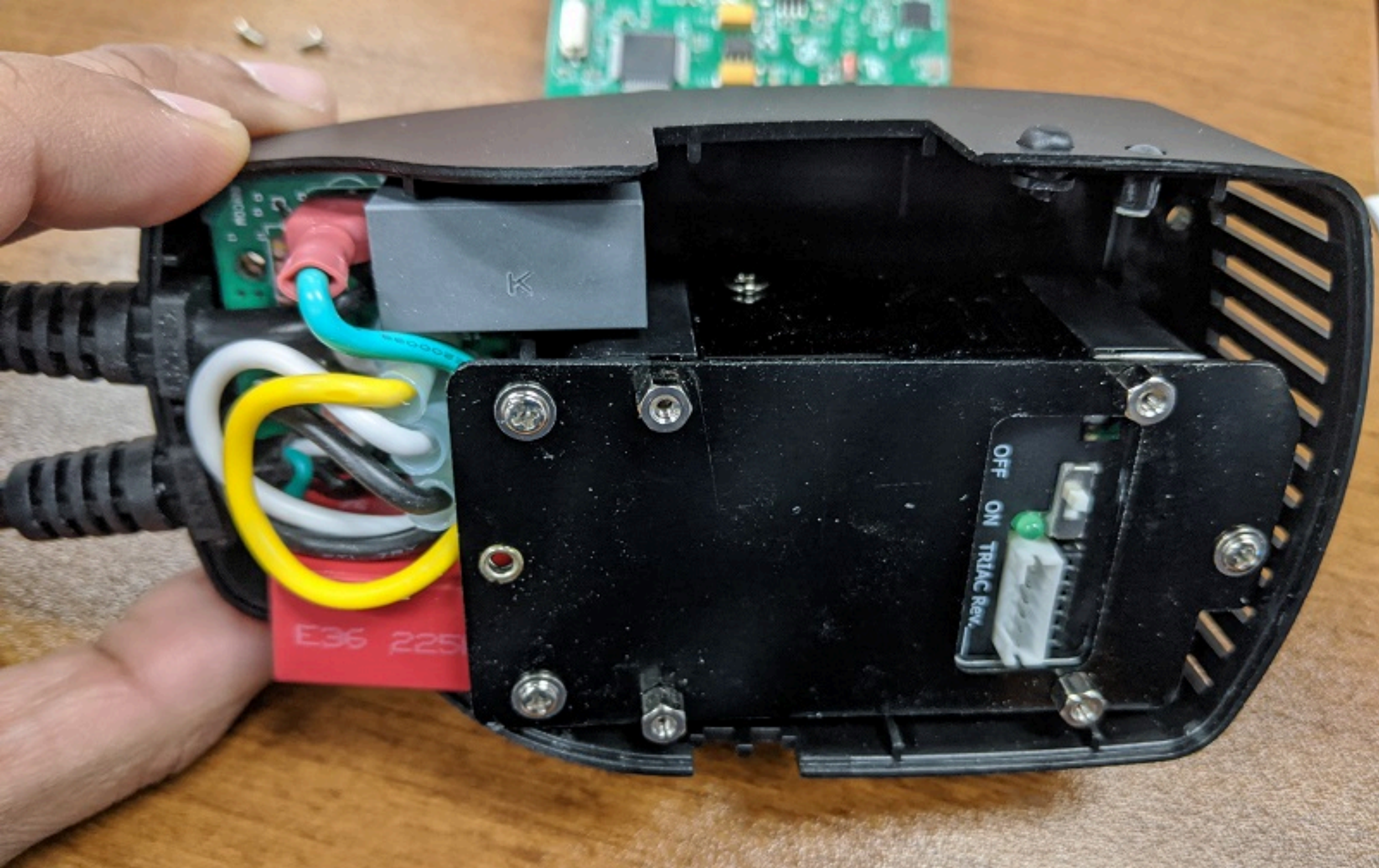
WBI is re-use from another INNCOM product installed in a L510 housing

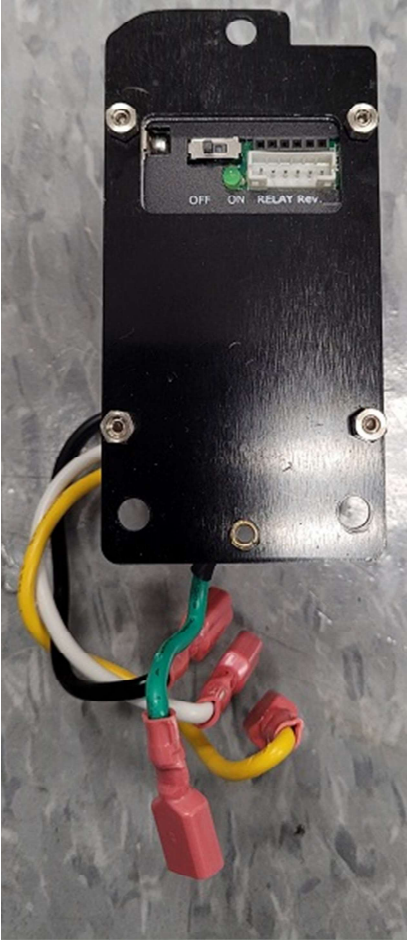


E36 225

OFF ON TR1AC Rev.







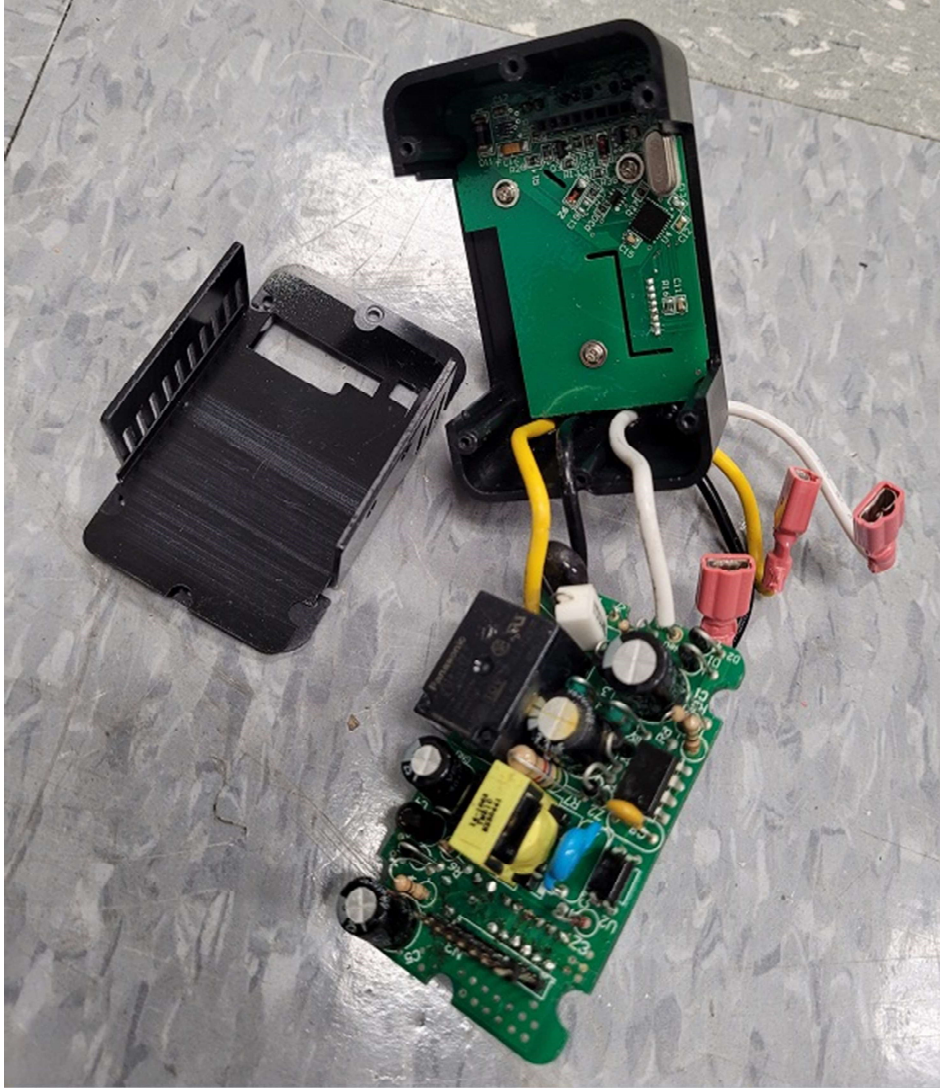
Relay Actuator Front View



Relay Actuator Back View

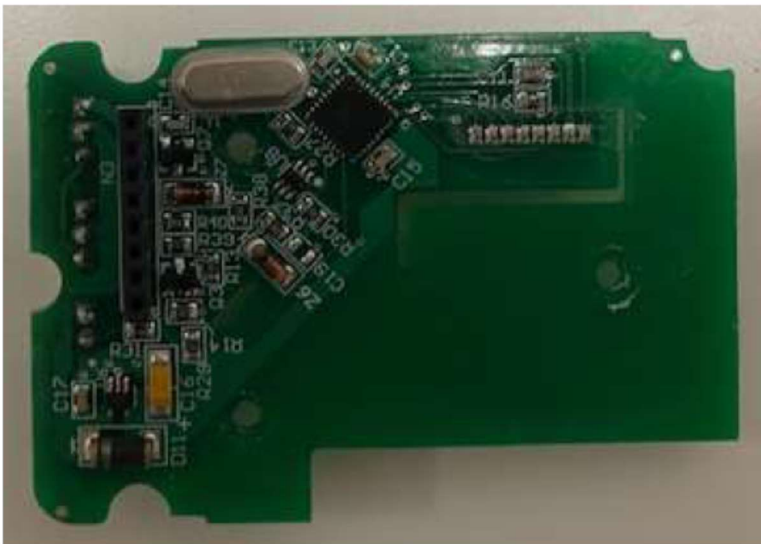
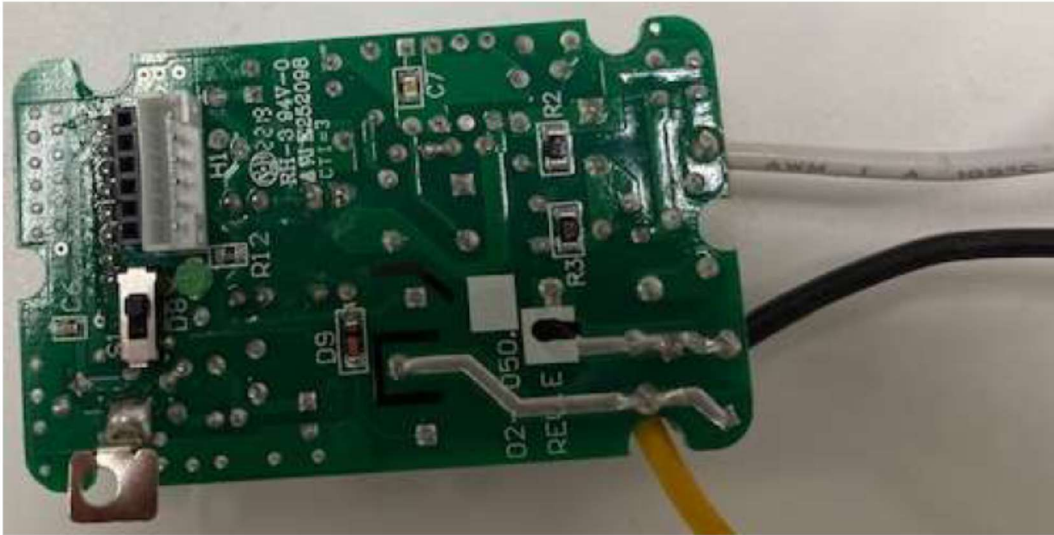


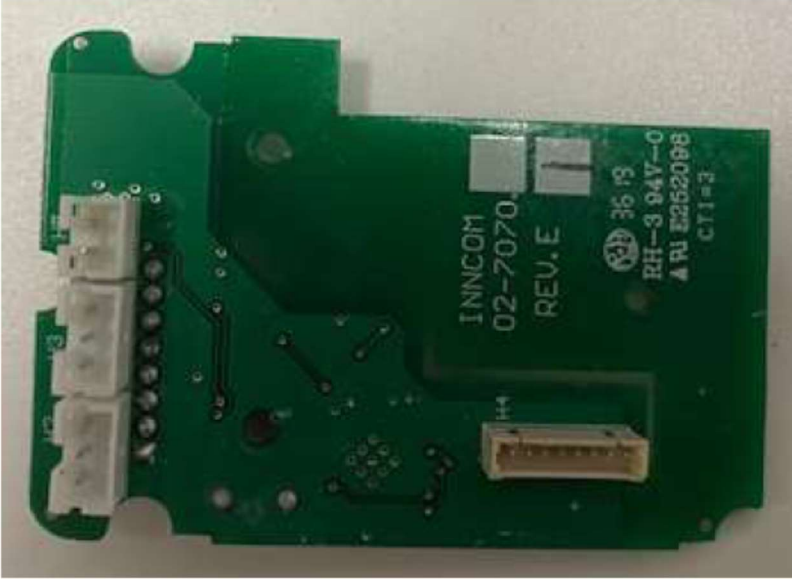
Relay Acuator



Relay Actuator

RELAY LOAD ACTUATOR PCBs





INNCOM
02-7070

REV. E



36 19

RH-3 94V-0
A RU E262098

CTI-3