

# System Validation - D2450V2 S/N:706

(Antenna input power: 250 mW)

SAM-2; Flat

Probe: ET3DV6 - SN1578; ConvF(4.50,4.50,4.50); Crest factor: 1.0

Head 2450MHz:  $\sigma = 1.97$  mho/m  $\epsilon_r = 38.1$   $\rho = 1.00$  g/cm<sup>3</sup>

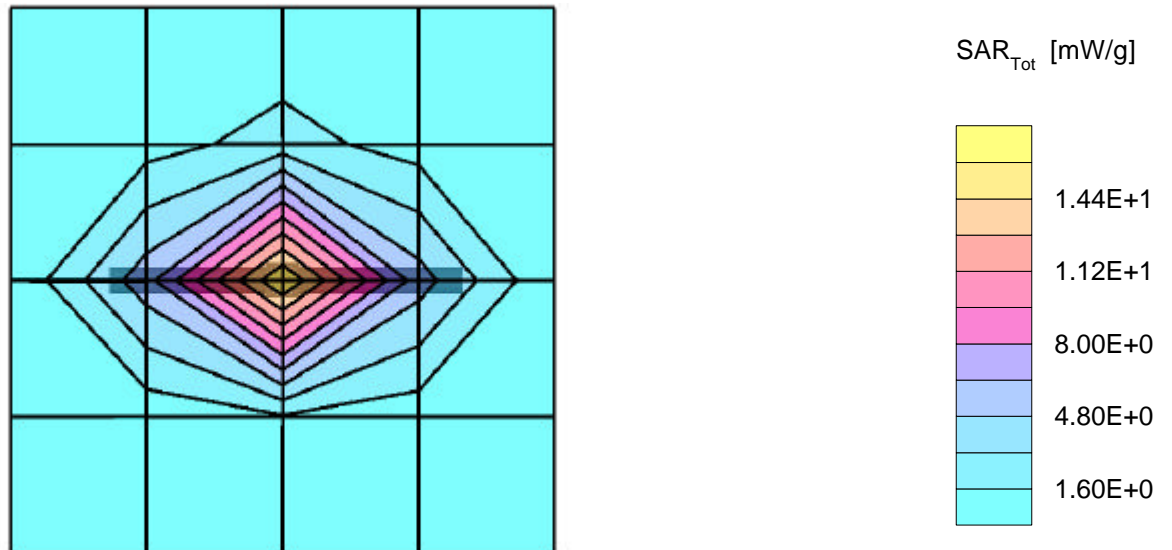
Cube 5x5x7: Peak: 30.0 mW/g, SAR (1g): 14.2 mW/g, SAR (10g): 6.42 mW/g, (Worst-case extrapolation)

Penetration depth: 6.2 (6.0, 6.8) [mm]

Powerdrift: 0.02 dB

Ambient Temperature (degree C): 22.0

Liquid Temperature (degree C): 20.0



# System Validation - D2450V2 S/N:706

(Antenna input power: 250 mW)

SAM-2;

Probe: ET3DV6 - SN1578; ConvF(4.50,4.50,4.50); Crest factor: 1.0

Head 2450MHz:  $\sigma = 1.97 \text{ mho/m}$   $\epsilon_r = 38.1$   $\rho = 1.00 \text{ g/cm}^3$

: , , ()

Penetration depth: 6.3 (6.0, 6.9) [mm]

Ambient Temperature (degree C): 22.0

Liquid Temperature (degree C): 20.0

