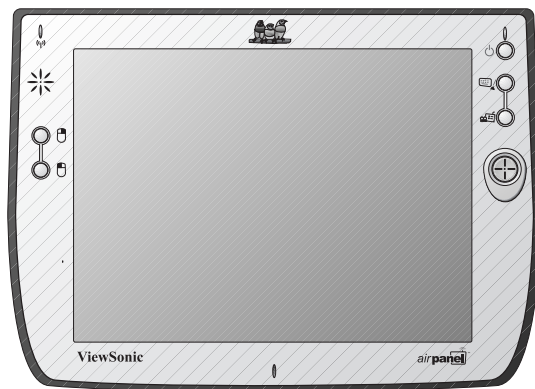


ViewSonic®

airpanel™ V110
Wireless Monitor



User Guide

Guide de l'utilisateur

Bedienungsanleitung

ユーザーズ ガイド

使用手冊

使用手冊

Contents

Introduction

Your airpanel V110 Wireless Monitor	2
Precautions	2
airpanel V110 Features	3
Front Control Buttons and Features	3
Rear Connection Ports & Panels	4
Battery & Power Properties	5
Battery Power Status	5
Changing the Battery	6
Antenna Signal Properties	6
Wireless Connection Signal Status	6

Basic Setup

Charging the Battery	7
Using the AC/DC Power Converter	7
Setting Up Software	8
BEFORE YOU BEGIN	8
Accessing Information from your Home PC	12

Using the airpanel V110

The Buttons	13
Using the Stylus	14
Moving Windows	14
Operating System not Responding	15
Calibrating the Touch Screen	15
Adjusting Stylus Double-tap Rate	15
Resetting your airpanel	16
Soft Reset	16
Hard Reset	16
PCMCIA Cards	17
Using a PCMCIA Card	17
airpanel Settings	18
Device Settings	18

Optional Accessories

The ViewSonic airpanel V110 Dock	24
Commercially Available Options	25

External USB Keyboard	25
External USB Mouse	25
External Headphone Set	25
External Microphone	25

Appendix

airpanel V110 Specifications	26
Customer Support	28
Cleaning and Maintenance	29
Limited Warranty	30
Safety Guidelines	31
Compliance and Safety Notices	32
Radio Frequency Interference (RFI) Compliance	32
Safety Notices	34

airpanel V110 Copyright © ViewSonic Corporation, 2002. All rights reserved.

airpanel is a trademark of ViewSonic Corporation. ViewSonic, and the three birds logo are registered trademarks of ViewSonic Corporation.

Microsoft, Windows, Windows CE, Windows CE Inbox, Explorer and Internet Explorer, Pocket Word, Microsoft Word, Active Sync, MSN, Excel, Windows RDP and the Windows logo are trademarks of Microsoft Corporation in the United States and other countries.

Citrix, WindView, and ICA are registered trademarks of Citrix Systems, Inc. MetaFrame is a trademark of Citrix Systems, Inc.

Intel and X-Scale are registered trademarks of Intel Corporation.

VESA is a registered trademark of the Video Electronics Standards Association.

CompactFlash is a trademark of the CompactFlash Association.

ENERGY STAR® is a registered trademark of the U.S. Environmental Protection Agency (EPA).

As an ENERGY STAR® partner, ViewSonic Corporation has determined that this product meets the ENERGY STAR® guidelines for energy efficiency.

Disclaimer: ViewSonic Corporation shall not be liable for technical or editorial errors or omissions contained herein; nor for incidental or consequential damages resulting from furnishing this material, or the performance or use of this product.

In the interest of continuing product improvement, ViewSonic Corporation reserves the right to change product specifications without notice. Information in this document may change without notice.

No part of this document may be copied, reproduced, or transmitted by any means, for any purpose without prior written permission from ViewSonic Corporation.

Product Registration

To meet your future needs, and to receive any additional product information as it becomes available, please register your product on the Internet at: www.viewsonic.com. The *airpanel* V110 Utility CD-ROM also provides an opportunity for you to print the registration form, which you may mail or fax to ViewSonic.

For Your Records

Product Name:	<i>airpanel</i> V110
Model Number:	VSMW24688
Document Number:	A-CD- <i>airpanel</i> _V110-1
Serial Number:	_____
Purchase Date:	_____

Product disposal at end of product life

ViewSonic is concerned about the preservation of our environment. Please dispose of this product properly at the end of its useful life. Your local waste disposal company may provide information about proper disposal.

Introduction

Your *airpanel* V110 Wireless Monitor

Congratulations on your purchase of a ViewSonic® *airpanel*™ V110 Wireless Monitor. With your *airpanel* V110 you will be able to access files, e-mail, applications, surf the web and data located on your Microsoft Windows XP Professional PC remotely.

This user guide will help you set-up your *airpanel* V110 and introduce you to its many features.

Important! Save the original box and all packing material for future shipping needs.

Your *airpanel* V110 package contents include:

- ViewSonic *airpanel* V110
- Quick Start Guide
- *airpanel* V110 battery
- AC/DC power adapter with Power cord
- USB Setup Cable (*airpanel* to PC)
- Stylus (2)
- Stylus Tether
- *airpanel* V110 Utility CD-ROM which includes the User Guide documentation and the wireless monitor installation software

Precautions

- For best viewing conditions view the screen from a distance of 15" to 18".
 - **DON'T TOUCH THE SCREEN WITH YOUR FINGERS.** Oils from the skin are difficult to remove.
 - **NEVER REMOVE THE REAR COVER.** Your *airpanel* V110 contains high voltage parts. You may suffer serious injury if you touch these parts.
 - Avoid exposing the screen to direct sunlight or another heat source. The screen should be facing away from direct sunlight to reduce glare.
 - Always handle your *airpanel* V110 with care; dropping your *airpanel* V110 could void the warranty.
 - Do not operate your *airpanel* V110 outside in a wet, damp or extremely cold environment.
 - Do not place heavy objects on the screen, video cable, or power cord.
 - If smoke, abnormal noise, or strange odor is present, immediately switch the *airpanel* V110 off and call your dealer or ViewSonic.
 - Use only the AC/DC power adapter supplied with your *airpanel* V110.
-

airpanel V110 Features

Front Control Buttons and Features

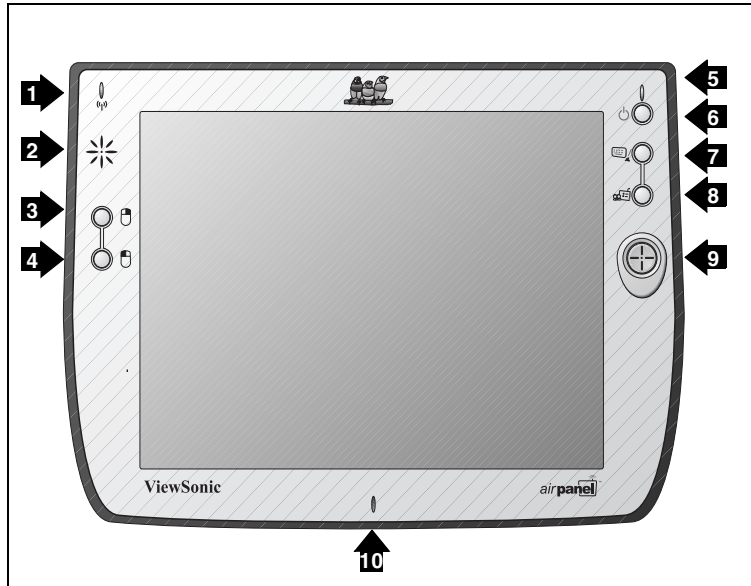


Figure 1: Front of airpanel V110

Features, Lights, and Buttons

1. Antenna Activity Indicator Light
2. Speaker
3. Mouse Button - Right
4. Mouse Button - Left
5. Power On/Off Indicator Light
6. On/Off Toggle Switch
7. Virtual Keyboard On/Off Toggle Switch
8. Log On/Off to Host PC & airpanel Settings
9. Cursor Navigation Button
10. Microphone

Rear Connection Ports & Panels

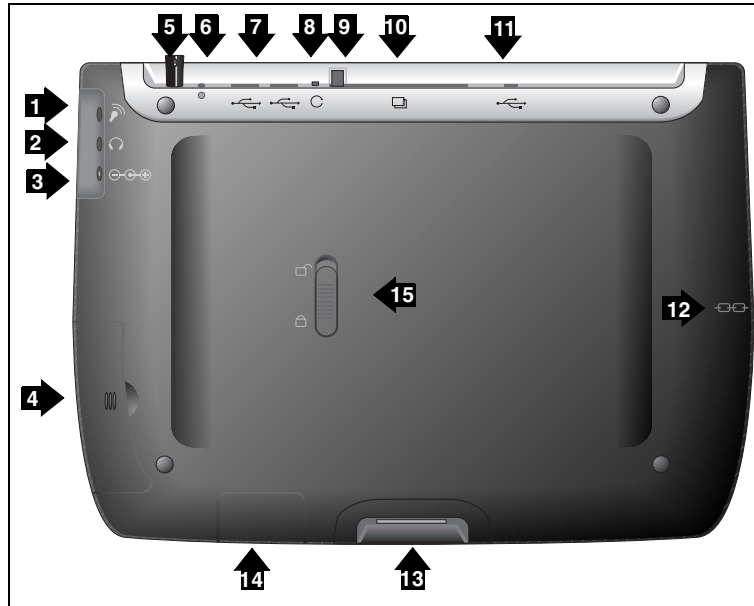


Figure 2: Back of *airpanel* V110

Ports, Buttons, Slots, Jacks, & Switches

1. Microphone Port
2. Headphone Port
3. DC Power Port
4. Main Battery Port
5. Stylus in Storage Slot
6. Stylus Tether Port
7. USB Ports (Two)
8. Reset Port
9. PCMCIA Eject Button
10. PCMCIA Card Slot
11. USB Port (Mini-B)
12. Kensington Security Lock Port
13. Docking Port
14. Auxiliary Battery Port
15. Main Battery Latch

Action Item 1: Hal - See David for security port “legalese.”

Battery & Power Properties

CAUTION: Replace only with *airpanel* V110 battery (MW-BAT-003).

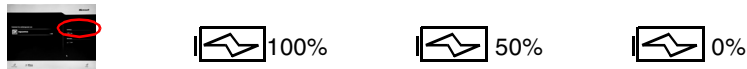
Your *airpanel* V110 has two power sources, AC (using the AC/DC converter) or battery. To run your *airpanel* V110 from an AC outlet, use the supplied AC/DC adapter cable.

It takes the *airpanel* V110 approximately two (2) hours to charge while not in use and four (4) hours while in use. In normal operation (when not connected to an AC outlet), the *airpanel* V110 operates on battery power alone. A fully charged battery can last up to four (4) hours depending on power consumption factors such as the screen’s brightness setting. The use of optional PCMCIA card accessories will also affect battery life.

Battery Power Status

The Power Level Icon

To determine the battery’s current charge level, check the battery charge icon on the *airpanel* desktop screen.



The Power Status LED

The Power Status LED at the upper right corner of the *airpanel* also displays useful information in the battery’s current status and charge level.

In normal battery powered operation:

- Off - the device is powered off
- Solid Green - power level OK
- Solid Yellow - power level low
- Blinking Yellow - power level critically low

When using the AC Power Adapter:

- Solid Green - AC powered, battery charged
- Solid Yellow - AC powered, battery charging

When using the optional *airpanel* V110 Dock (described later in the manual):

- Solid Green - AC powered, battery charged
- Blinking Green - AC powered, battery charging

Changing the Battery

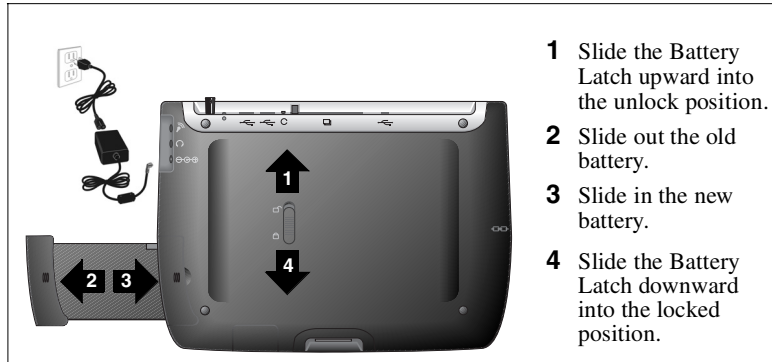


Figure 3: Battery Removal and Insertion

Antenna Signal Properties

Your *airpanel* V110 and home PC use a wireless radio signal standard called Wi-Fi (802.11b) to communicate with one another. For the best possible connection signal, locate the AirSync wireless adapter at an adequate height above floor level.

The quality of your radio connection signal can be weakened by excessive distance and by intervening materials such as walls and furnishings. On occasion, you may want to check the quality of your wireless connection.

Wireless Connection Signal Status

The Network Icon

To check the quality of the wireless signal connection between your *airpanel* and your home PC, view the network icon on the *airpanel* desktop screen.



The Antenna Status LED

The Antenna Status LED at the upper left corner of the *airpanel* also displays useful information on the wireless signal connection:

- Off - no signal, no connection
- Solid Green - good signal level
- Solid Yellow - poor signal level

Basic Setup

Your *airpanel*™ V110 Wireless Monitor features powerful software and hardware allowing you to connect to your home PC in order to view and edit files, wirelessly send/receive e-mail, and explore the World Wide Web.

This section explains the ports, cables, connections and hardware used to get you started. More details and connection options are explained in the next section, *Using the airpanel™ V110*.

Charging the Battery

Using the AC/DC Power Converter

Before using the *airpanel* V110 Wireless Monitor for the first time, charge the battery for at least 3 hours. You may charge, recharge, and/or operate your *airpanel* V110 with available AC power using the AC/DC power converter. Use the AC/DC power converter as shown in the figure below.

Caution: Use only the power converter supplied with your *airpanel* V110.



Figure 4: Using the AC/DC Power Converter

An optional *airpanel* docking station, described later in this manual, may also be used to charge, recharge, and/or operate your *airpanel*.

For additional information on battery charging and operation, please review the Battery Power & Properties section presented earlier in this chapter.

Setting Up Software

The *airpanel* V110 Wireless Monitor is intended for use as a Microsoft Windows for Smart Display device. The Smart Display capability allows the *airpanel* remote access to a home computer running the Windows XP Professional operating system.

BEFORE YOU BEGIN

To use your *airpanel* V110 as a Microsoft® Windows for Smart Display device, you must have the following:

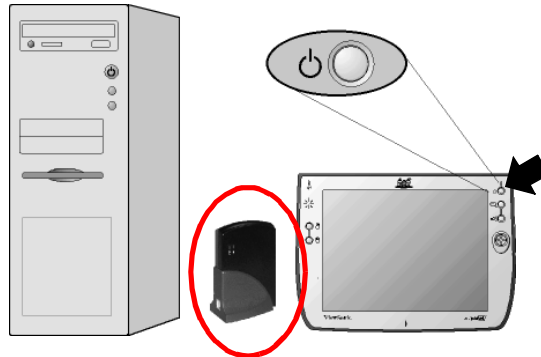
- Another personal computer running Windows XP™ professional
- Windows XP Professional Service Pack 1 or higher. (Included on the *airpanel* V110 Utility CD)

Action Item 2: *Hal - MS software availability to be decided. Follow up.*

- A USB WI-FI (802.11b) wireless access adapter or a wireless network access point.

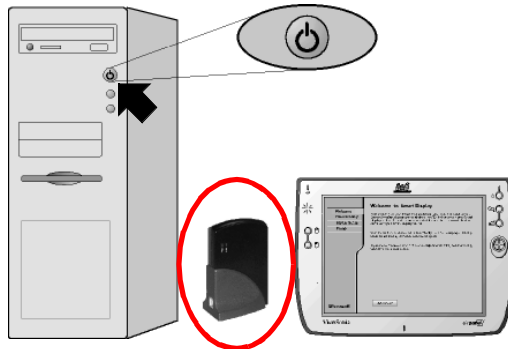
HARDWARE / SOFTWARE SETUP

STEP 1 Turn on the *airpanel* V110



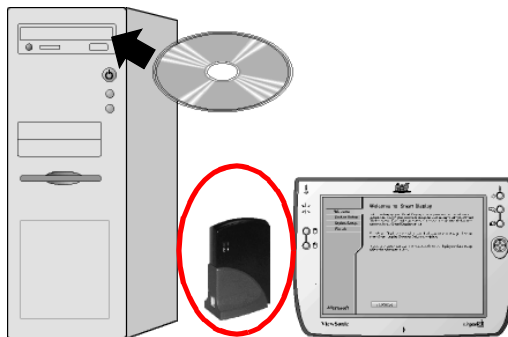
Action Item 3: *Hal - Standby to redo all graphics w/ Adapter*

STEP 2 Turn on the your Home PC



STEP 3 Insert the *airpanel* V110 Utility CD

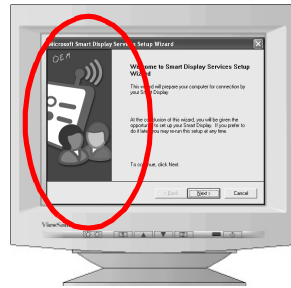
The *airpanel* utility contains the Microsoft® Windows for Smart Displays installation software.



If the Setup application does not start up automatically, you can start it manually by opening Setup.exe on the CD. To open the CD, chose the Start menu then select My Computer.

STEP 4 Follow the Setup Instructions

The instructions to be followed are the ones on your Home PC monitor, not the ones on the *airpanel*'s Welcome screen



The Home PC Screen

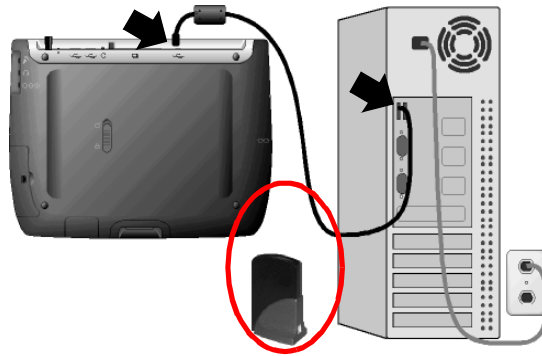


The *airpanel* Welcome Screen

Action Item 4: *Hal - Expect change in graphic on future build.*

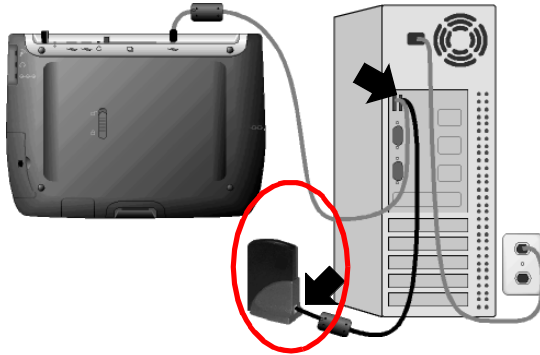
STEP 5 Connect the USB Setup Cable

When prompted, connect the *airpanel* V110 and host PC to one another using the USB Setup Cable (USB Mini-B to Type A), to up load OS to tablet PC



STEP 6 Remove the USB Setup Cable

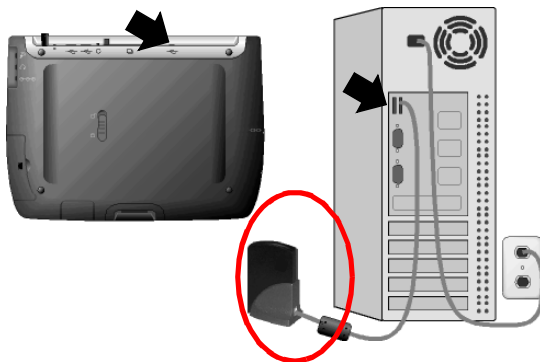
When the setup application is finished, disconnect the host PC and the airpanel V110 from one another by removing the USB Setup Cable



The quality of your radio connection signal can be weakened by excessive distance and by intervening materials such as walls and furnishings. For the best possible radio connection, locate the AirSync wireless adapter at an adequate height above floor level.

STEP 7 Connect the Adapter Cable

Plug the ViewSonic AirSync Wi-Fi Wireless Access Adapter to your home PC. The table PC can use wireless function to communication with home PC.



For those users intending to use a wireless access point, please refer to the Microsoft Windows XP Help files for additional information.
Action Item 5: Group - Develop a wireless access point plan.

Accessing Information from your Home PC

You are now ready to use the *airpanel* V110 Wireless Monitor to access information from your home computer.

Opening the *airpanel* Link to your Home PC

To establish initial access to your Home PC, you begin at the *airpanel* default Welcome screen. Once the initial connection has been established, the device's default screen becomes the Dashboard screen. For all future sessions you will simply tap your account button on the Dashboard to establish your connection.

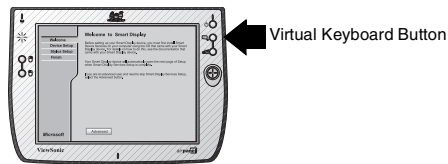


Figure 5: The *airpanel* Welcome Screen

Starting from the *airpanel* Welcome screen:

- 1 Tap the Advanced Button - the Calibration screen will open.
- 2 Follow the Calibration Instructions - the Alignment Successful screen then will open.
- 3 Tap Next on the Alignment Screen - the Mira Input Panel will open.
- 4 Tap Next on the Mira Input Panel - the Setup Complete screen will open
- 5 Tap the Finished Button on the Setup Complete Screen - the Dashboard screen will open.



Figure 6: The *airpanel* Dashboard Screen

- 6 Click your User Account Button on the Dashboard - the Password prompt will open.
- 7 Press the Virtual Keyboard Button on the Unit - the Virtual Keyboard will open.
- 8 Enter your Password then Click OK- your Home PC's monitor will go dark. The Home PC's desktop will then appear on your *airpanel* device.

You can now operate your Home PC remotely from your *airpanel* Wireless Monitor just as if you were at your Home PC itself.

Using the *airpanel* V110

The Buttons

The buttons on the right and left side of the *airpanel* V110 Wireless Monitor screen give you quick access to utilities and provide navigational control.

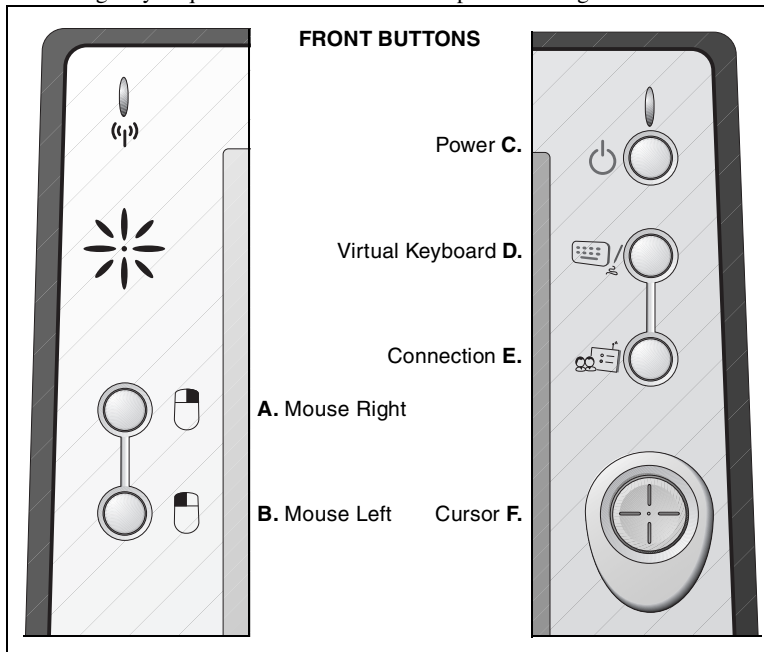


Figure 7: The *airpanel* Buttons

A. Right Mouse Button - Right functions

B. Left Mouse Button - Left functions

C. Power Button - Allows you to toggle the unit On and Off.

D. Virtual Keyboard Button - Allows you to toggle the Virtual Keyboard On and Off. The Virtual Keyboard enables you to input data using the stylus.

E. Connection Button - Allows you to connect and disconnect the *airpanel* to and from your Home PC.

F. Cursor Button - Allows you to control the cursor without having to use the stylus or a mouse.

Using the Stylus

Use the stylus to “tap” or “double-tap” on an application icon and to select items on the menu. The stylus is also used to “type” on the Virtual Keyboard and to write notes when in handwriting recognition mode. The two styli that are supplied with your *airpanel*™ V110 are designed for your screen. Use of other pointers could damage your screen.



Figure 8: Stylus

When not in use, you can conveniently place your stylus in the storage slot located on the top edge of your *airpanel* V110 Wireless Monitor. A Stylus Tether has been provided to allow you to attach the stylus to the *airpanel* so it will not become lost or misplaced.

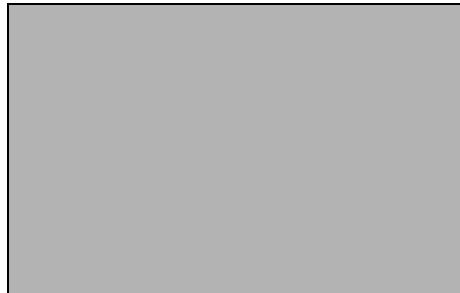


Figure 9: Stylus with Tether

Action Item 6: *Hal - Show tether attached.*

Moving Windows

- 1** To move a window on the screen, press on the title-bar gently with the stylus.
- 2** Move the window slowly to a new location.

Operating System not Responding

If your operating system is not responding to your stylus, try double-tapping on the screen. Also, try solid taps in the center of the icon. If you still have problems, you may need to recalibrate your screen.

Calibrating the Touch Screen

If your touch screen is not responding accurately to taps with the stylus, you may need to recalibrate the screen. To do so:

- 1** Tap on the desktop Settings button - the Settings window will open
- 2** Tap on the General Tab
- 3** Tap on the Realign Button in the Stylus section
- 4** Follow the on-screen instructions
- 5** When finished, tap the screen - the recalibration is complete

The instructions will ask you to place the stylus on a series of cross-hair target symbols. When doing so, rather than just tapping the screen, hold the stylus in place for a second or two as directed until the program responds.

Adjusting Stylus Double-tap Rate

The double-tap rate can be set in the Settings window:

- 1** Tap on the desktop Settings button - the Settings window will open
- 2** Tap on the General Tab
- 3** Double-tap on the checkerboard graphic to set your double tap rate
- 4** Close the Settings window

Resetting your *airpanel*

Soft Reset

Should your *airpanel*™ V110 fail to respond, it may be restarted without turning off the power.

- 1 Locate the reset button on the top of your *airpanel*.
- 2 Use the tip of your stylus to press the reset button to restart your *airpanel*.

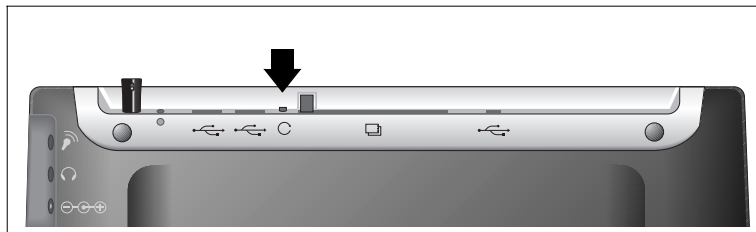


Figure 10: The Reset Button

NOTE: A *Soft Reset* will disable the wireless connection to your home computer. You must re-establish the connection to your home computer by going through the log-on process.

Hard Reset

A hard reset may be required on rare occasions if your *airpanel* V110 completely locks up and the soft reset described above does not help.

You can perform a hard reset by detaching the main battery while the device is On. You can also:

- 1 Remove the auxiliary battery's cover panel.
- 2 Remove then replace the auxiliary battery and cover panel.



Figure 11: The Auxiliary Battery Port

NOTE: A *Hard Reset* will restore the *airpanel* V110 to its factory default settings and will also delete the contents of internal memory (RAM). You will need to re-install your PC settings in order to use the *airpanel*. See the *airpanel* software setup section for complete instructions.

PCMCIA Cards

A PCMCIA card can extend the functionality of your *airpanel* V110 Wireless Monitor by providing added features such as extra storage.

Using a PCMCIA Card

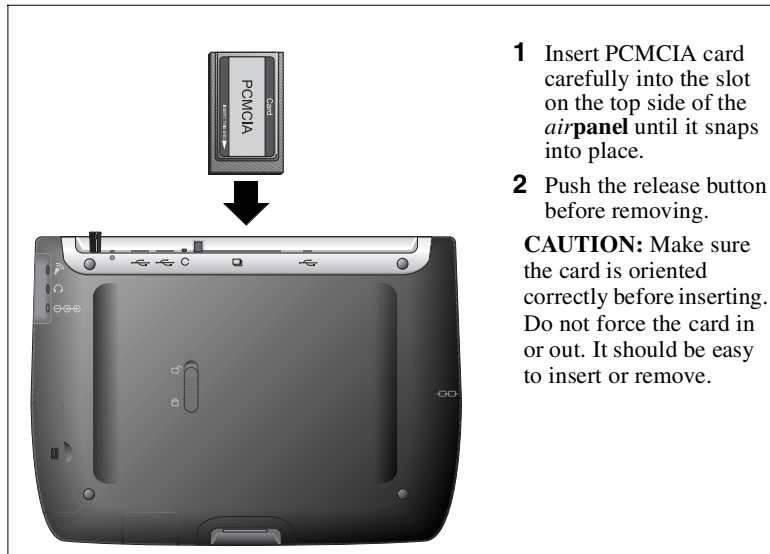


Figure 12: PCMCIA Card

For a list of supported PCMCIA cards, see our web site www.viewsonic.com.