

Visonic Inc.

Ceiling Mounted Dual Technology Detector

DUO-220E AM

FCC ID: GSADUO220EAM

Internal Photos



Figure 1: Top Side Case Open

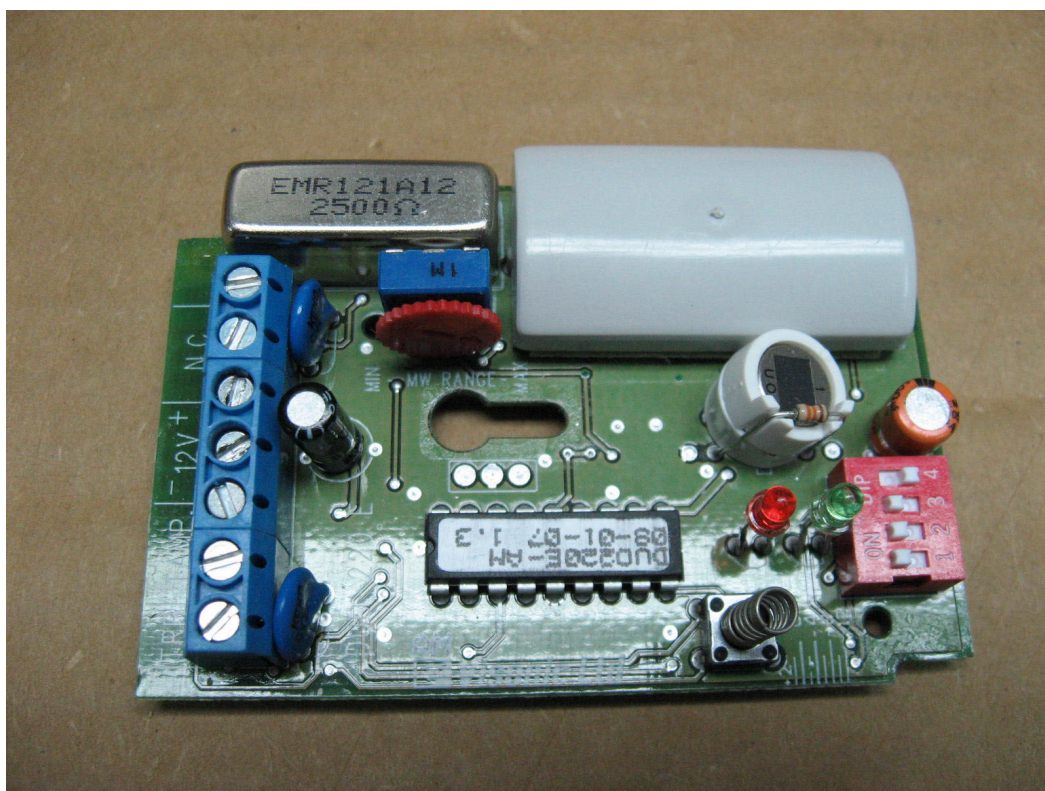


Figure 2: Top Side of PCB

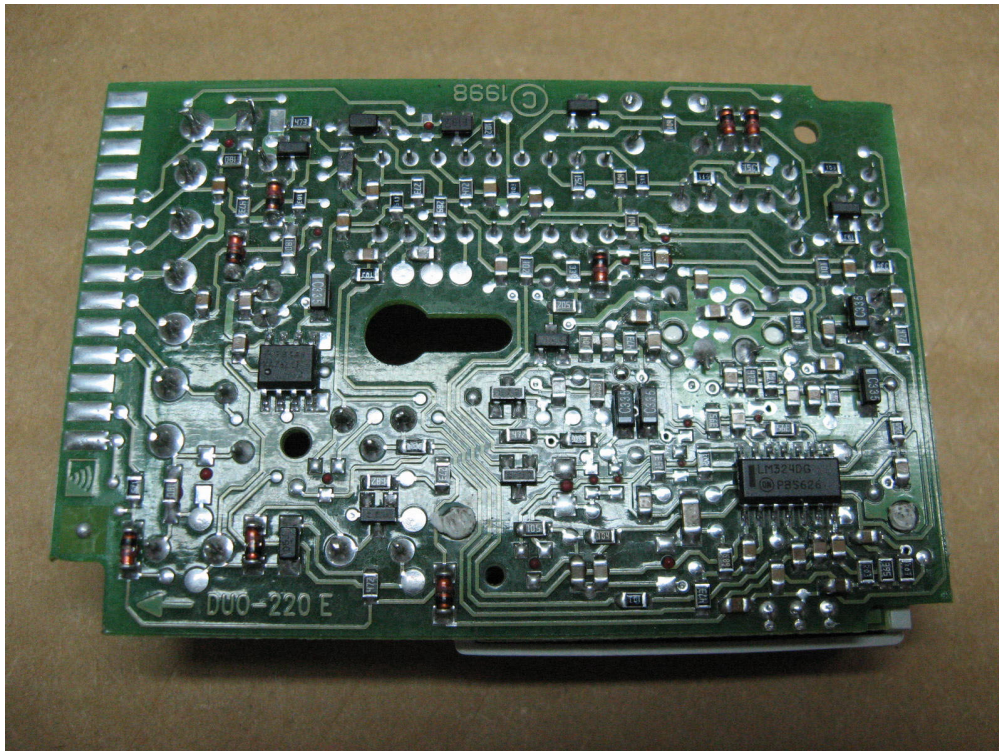


Figure 3: Bottom Side of PCB

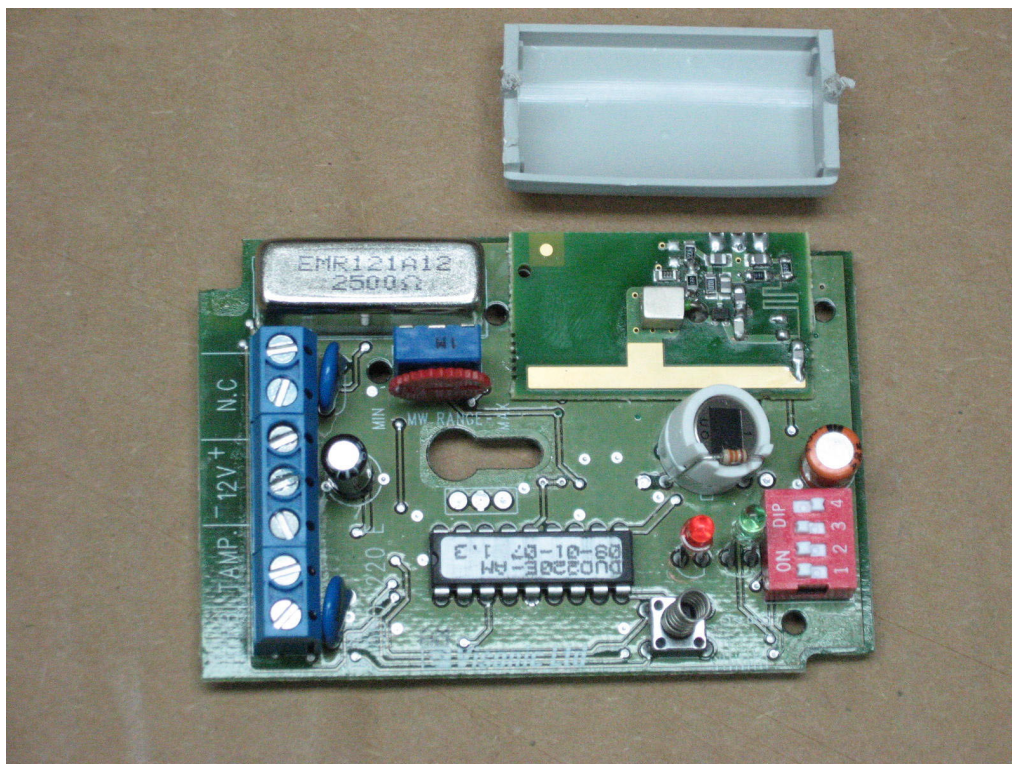


Figure 4: Top Side of PCB with MW Cover Removed

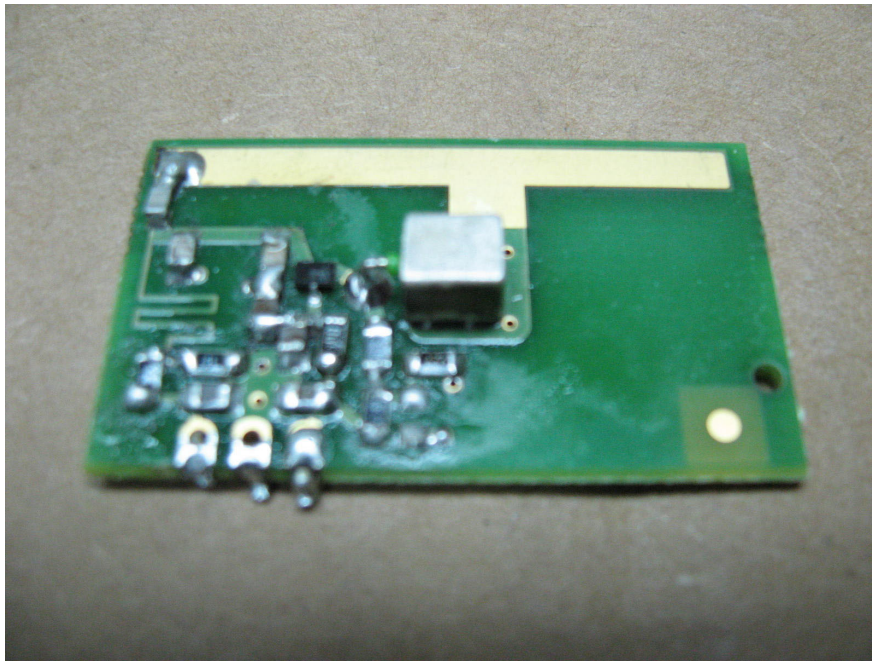


Figure 5: Top Side of MW

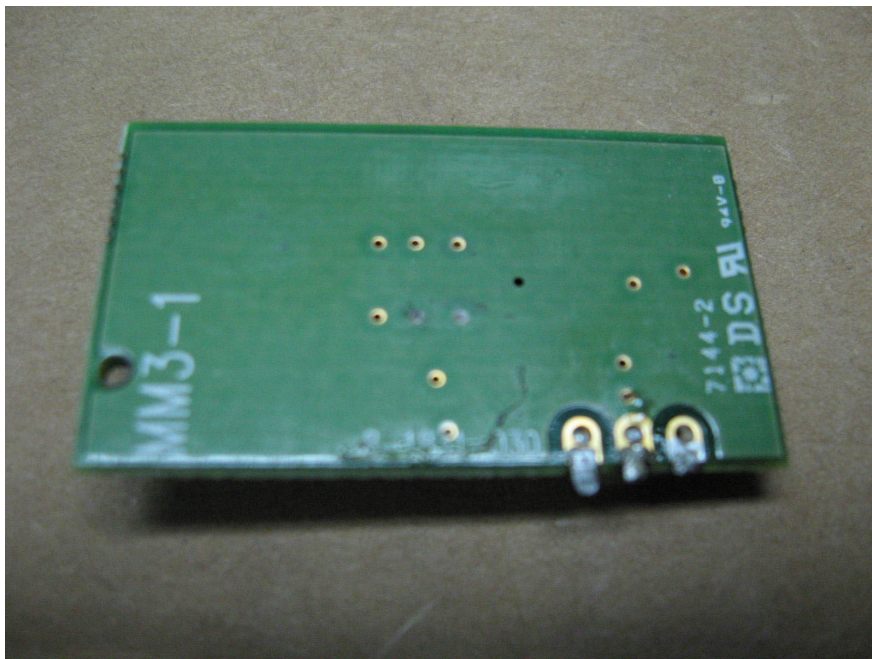


Figure 6: Bottom Side of MW