

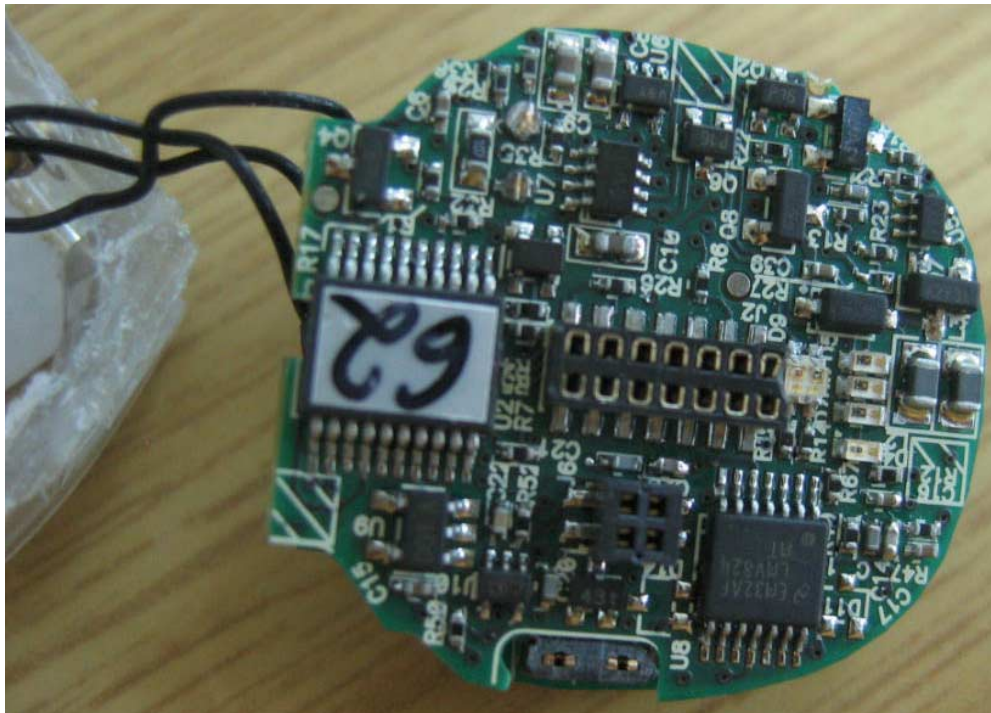
INTERNAL PHOTOGRAPHS

This document contains 10 photographs

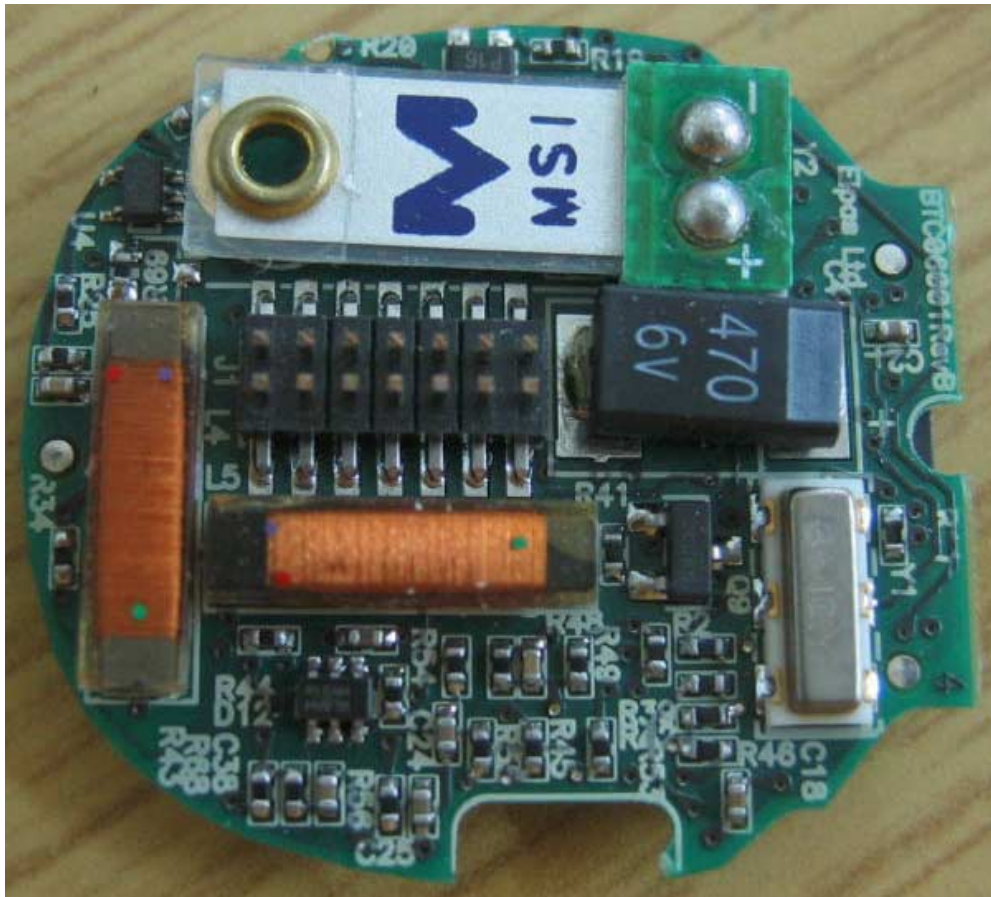
Photograph No.1
Baby Tag
Internal view



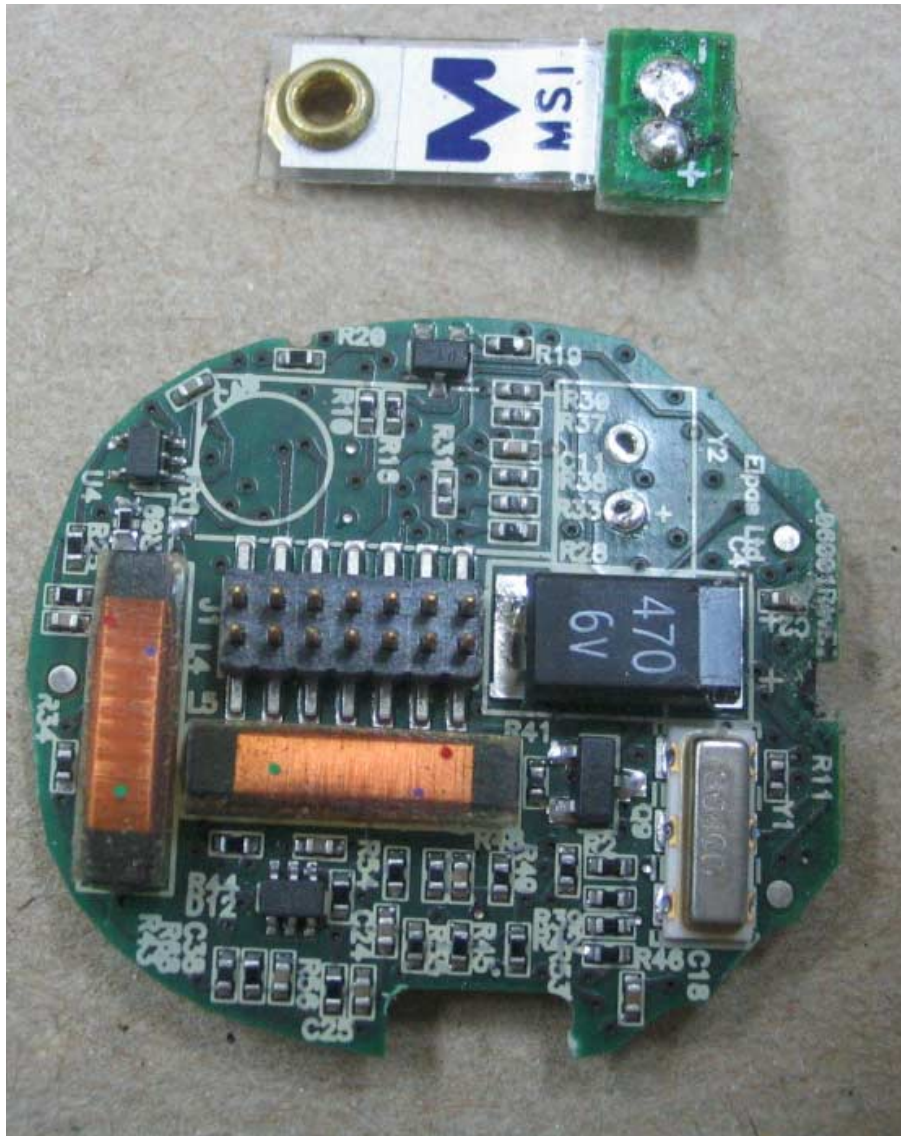
Upper PCB without antenna top view



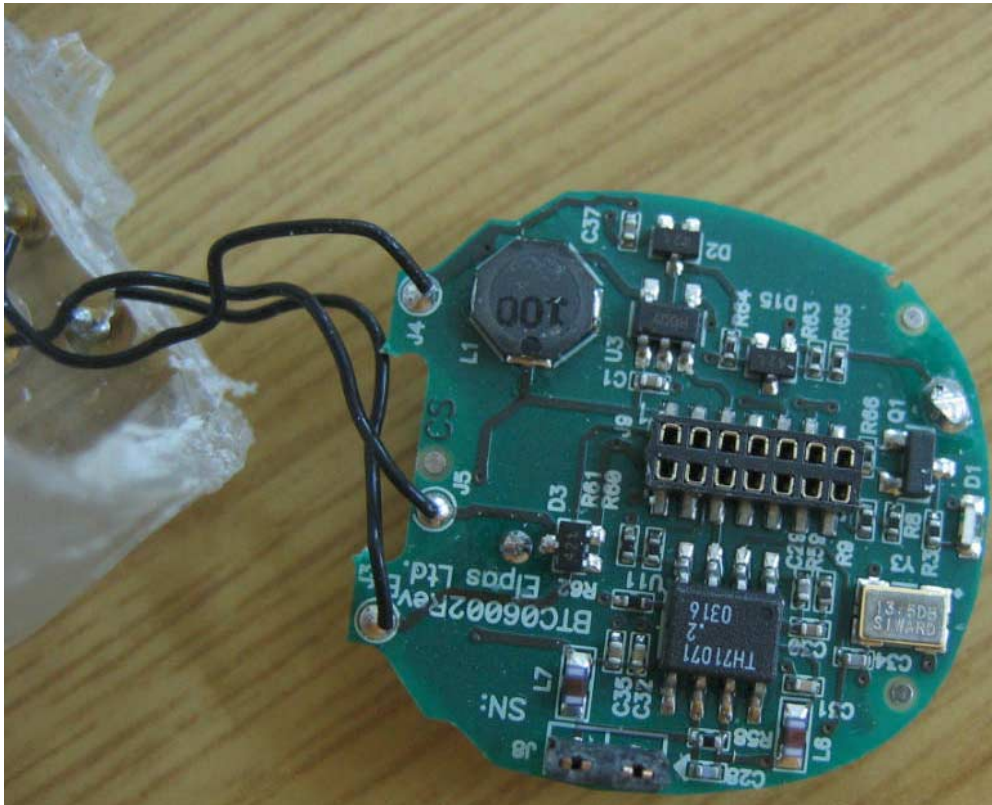
Photograph No.3
Baby Tag
Upper PCB rear view



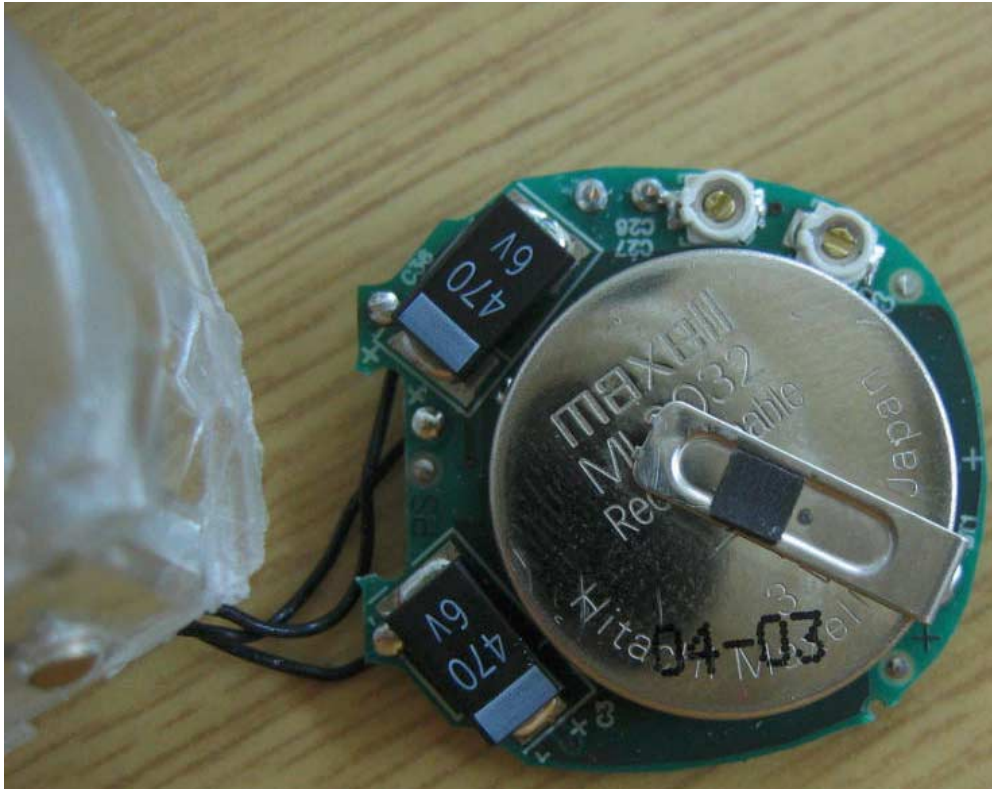
Photograph No.4
Baby Tag
Upper PCB rear view with motion detector removed



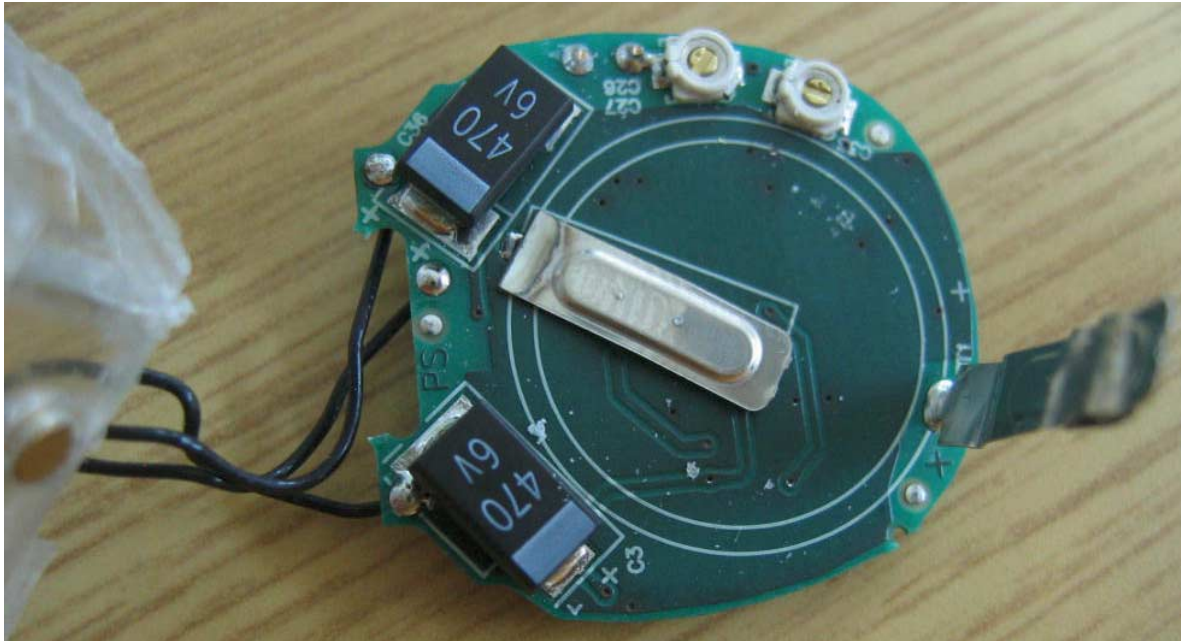
Photograph No.5
Baby Tag
Second PCB top view



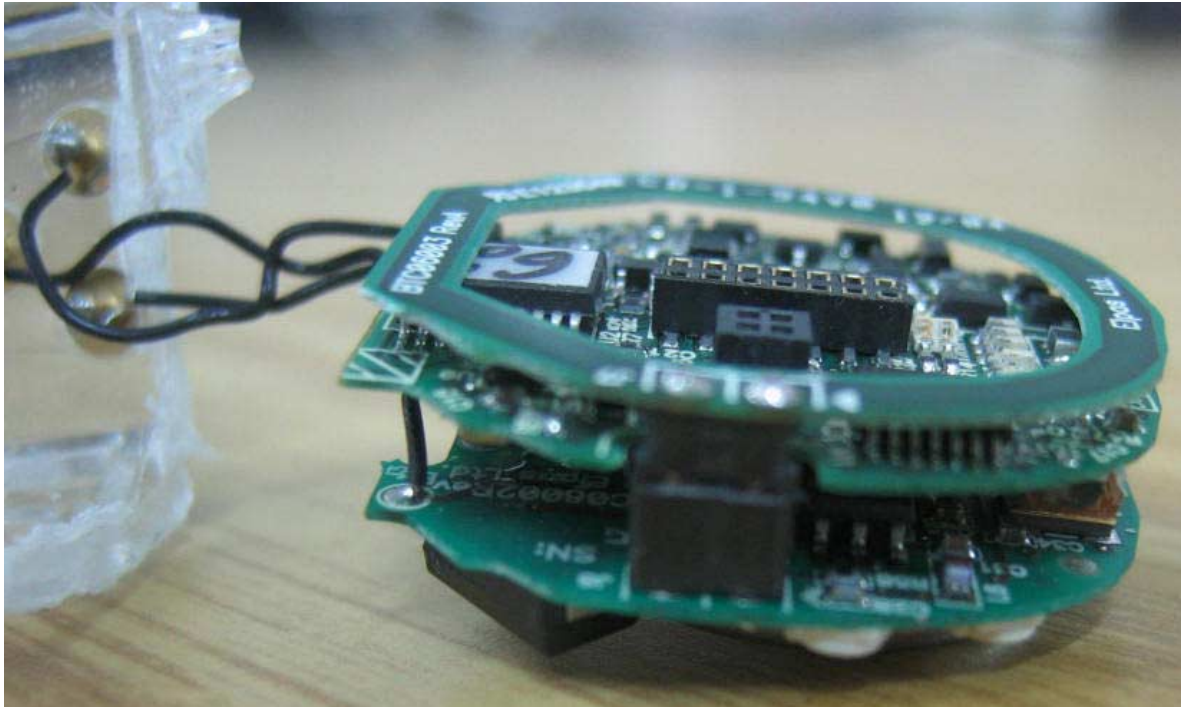
Photograph No.6
Baby Tag
Second PCB rear view with battery



Photograph No.7
Baby Tag
Second PCB rear view without battery



Photograph No.8
Baby Tag
Antenna assembly side view



Photograph No.9
Baby Tag
Antenna assembly top view



Photograph No.10
Baby Tag
Antenna assembly rear view

