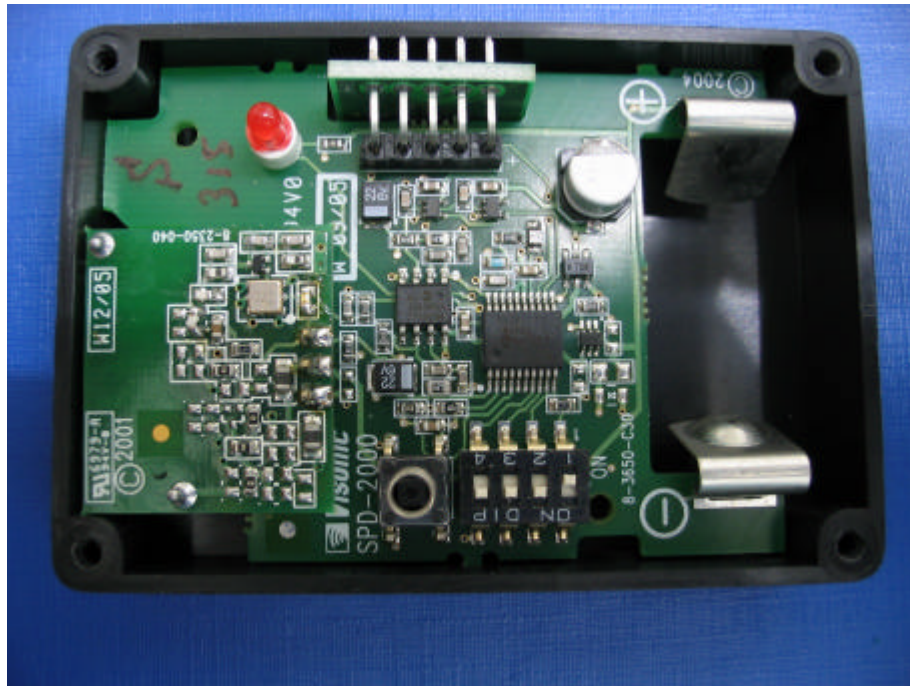


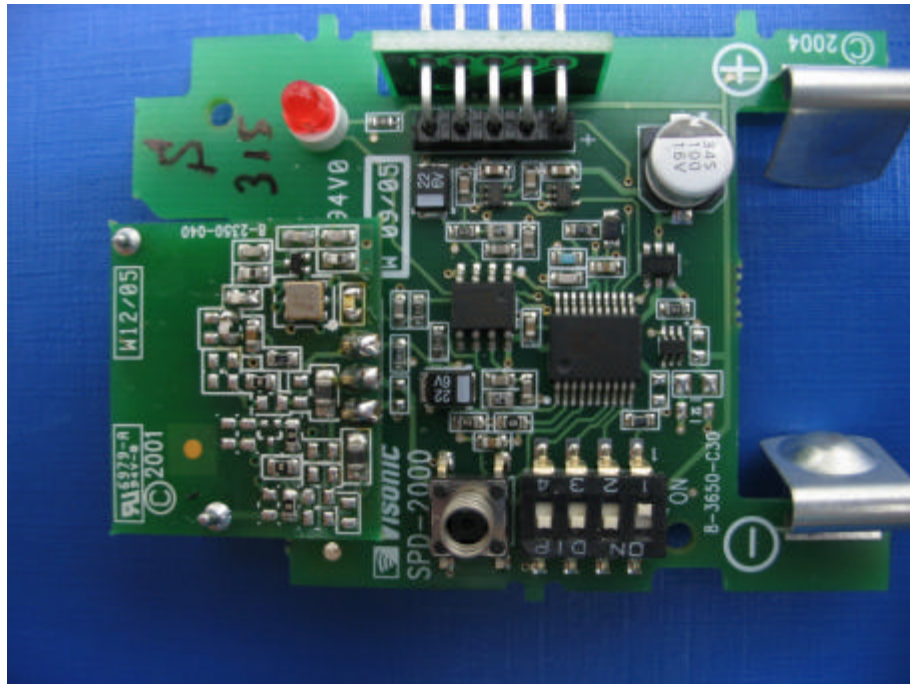
INTERNAL PHOTOGRAPHS

This document contains 8 photographs

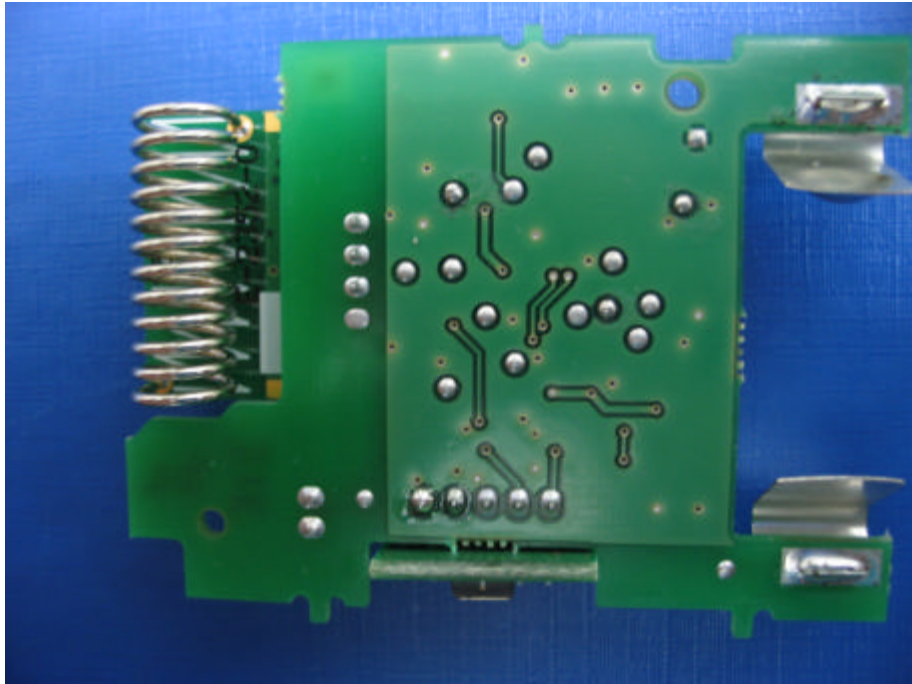
Photograph No.1
Wireless Spatial Position Detector
Internal view



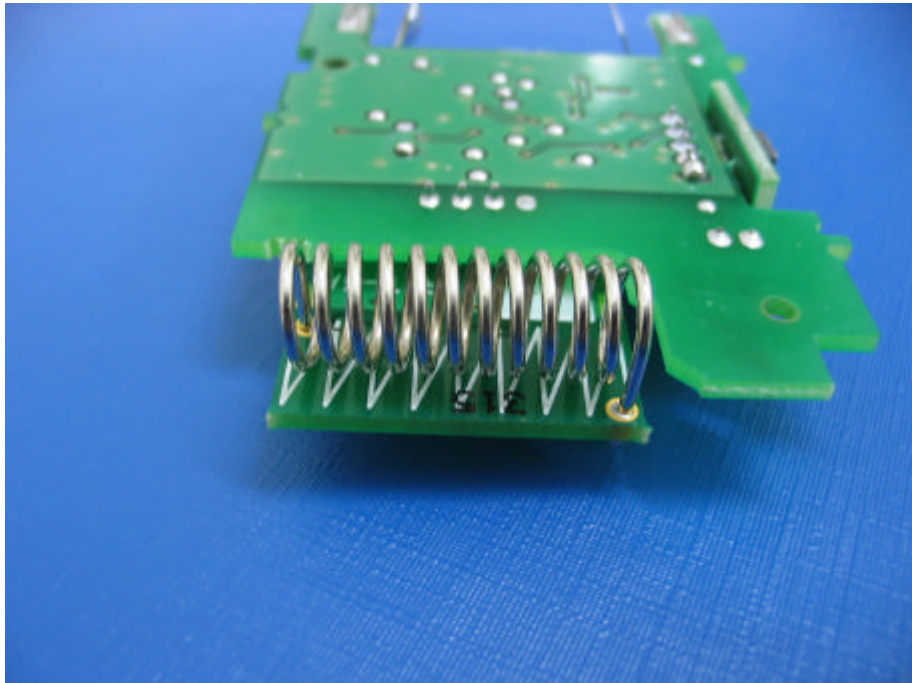
Photograph No.2
Wireless Spatial Position Detector
Component side of the main PCB with RF PCB



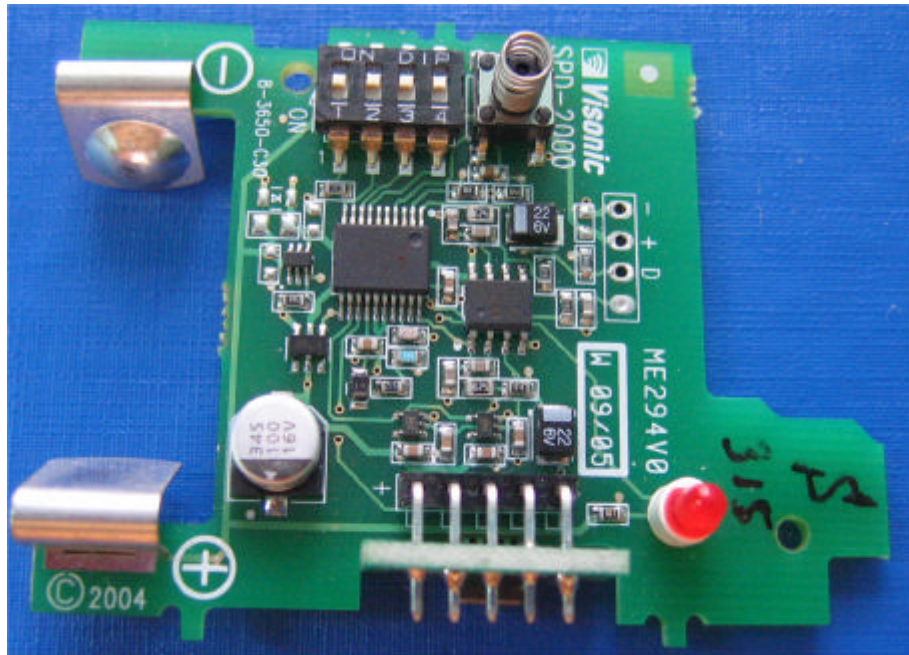
Photograph No.3
Wireless Spatial Position Detector
Print side of the main PCB with RF PCB



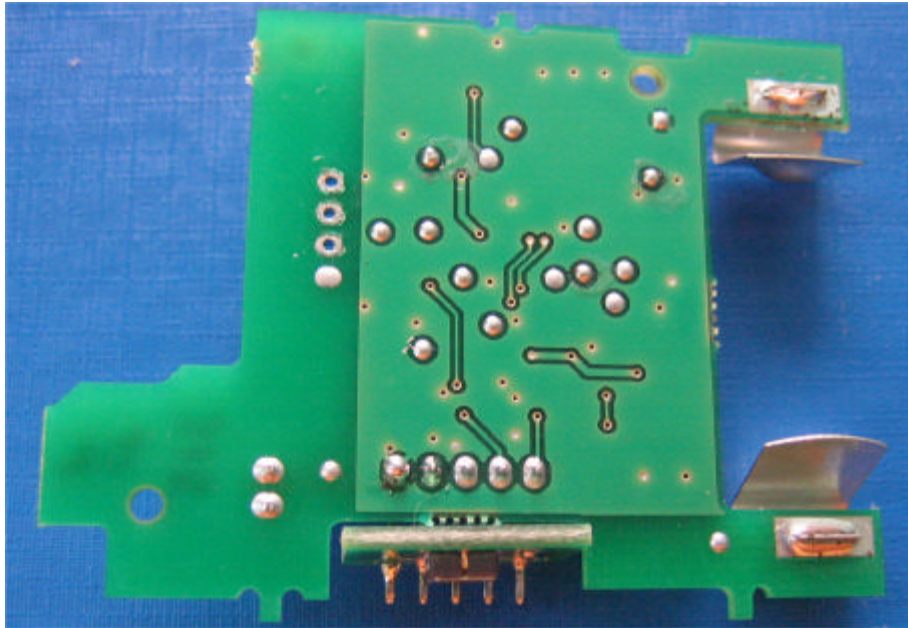
Photograph No.4
Wireless Spatial Position Detector
Side view of the main PCB and RF PCB with antenna assembly



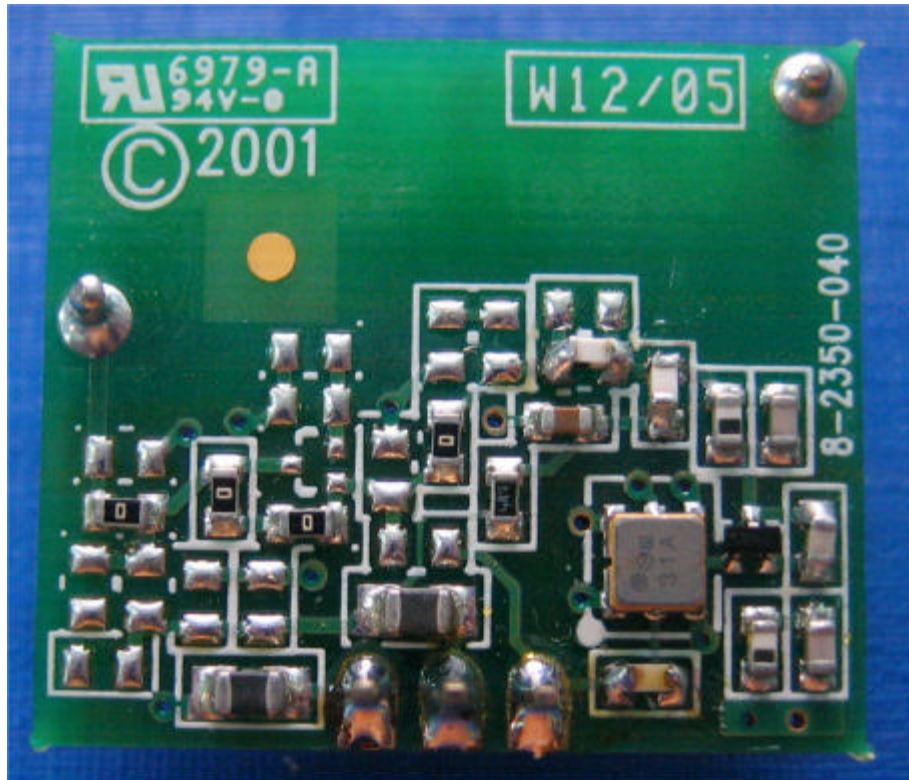
Photograph No.5
Wireless Spatial Position Detector
Component side of the main PCB without RF PCB



Photograph No.6
Wireless Spatial Position Detector
Print side of the main PCB without RF PCB



Photograph No.7
Wireless Spatial Position Detector
Component side of the RF PCB



Photograph No.8
Wireless Spatial Position Detector
Print side of the RF PCB

