

The University of Michigan
Radiation Laboratory
3228 EECS Building
Ann Arbor, MI 48109-2122
Tel: (734) 764-0500

Measured Radio Frequency Emissions
From

TRW Receiver
Model: 500N/592N

Report No. 415031-135
September 10, 2002

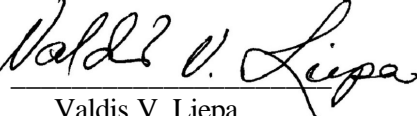
For:
TRW Inc
24175 Research Drive
Farmington Hills, MI 48335-2642

Contact:
Brennan Trese
Tel: 248-442-5296
Fax: 248-478-7241
PO: Verbal

Measurements made by:

Joseph D. Brunett

Tests supervised by:
Report approved by:



Valdis V. Liepa
Research Scientist

Summary

Tests for compliance with FCC Regulations Part 15, Subpart B, and Industry Canada RSS-210, were performed on TRW model 500N/592N. This device is subject to the Rules and Regulations as a Receiver. As a Digital Device it is exempt, but such measurements were made to assess the receiver's overall emissions.

In testing completed on 8-Aug-27, the device tested in the worst case met the allowed FCC (Class B) specifications for radiated emissions by more than 16.9 dB (see p. 6). The conducted emissions tests do not apply, since the device is powered from a 12 VDC system.

1. Introduction

TRW model 500N/592N was tested for compliance with FCC Regulations, Part 15, adopted under Docket 87-389, April 18, 1989, and with Industry Canada RSS-210, Issue 5, November, 2001. The tests were performed at the University of Michigan Radiation Laboratory Willow Run Test Range following the procedures described in ANSI C63.4-1992 "Methods of Measurement of Radio-Noise Emissions from Low-Voltage Electrical and Electronic Equipment in the Range of 9 kHz to 40 GHz". The Site description and attenuation characteristics of the Open Site facility are on file with FCC Laboratory, Columbia, Maryland (FCC Reg. No: 91050) and with Industry Canada, Ottawa, ON (File Ref. No: IC 2057).

2. Test Procedure and Equipment Used

The pertinent test equipment commonly used in our facility for measurements is listed in Table 2.1 below. The middle column identifies the specific equipment used in these tests.

Table 2.1 Test Equipment.

Test Instrument	Eqpt. Used	Manufacturer/Model
Spectrum Analyzer (0.1-1500 MHz)		Hewlett-Packard, 182T/8558B
Spectrum Analyzer (9kHz-22GHz)	X	Hewlett-Packard 8593A SN: 3107A01358
Spectrum Analyzer (9kHz-26GHz)	X	Hewlett-Packard 8593E, SN: 3412A01131
Spectrum Analyzer (9kHz-26GHz)		Hewlett-Packard 8563E, SN: 3310A01174
Spectrum Analyzer (9kHz-40GHz)		Hewlett-Packard 8564E, SN: 3745A01031
Power Meter		Hewlett-Packard, 432A
Power Meter		Anritsu, ML4803A/MP
Harmonic Mixer (26-40 GHz)		Hewlett-Packard 11970A, SN: 3003A08327
Harmonic Mixer (40-60 GHz)		Hewlett-Packard 11970U, SN: 2332A00500
Harmonic Mixer (75-110 GHz)		Hewlett-Packard 11970W, SN: 2521A00179
Harmonic Mixer (140-220 GHz)		Pacific Millimeter Prod., GMA, SN: 26
S-Band Std. Gain Horn		S/A, Model SGH-2.6
C-Band Std. Gain Horn		University of Michigan, NRL design
XN-Band Std. Gain Horn		University of Michigan, NRL design
X-Band Std. Gain Horn		S/A, Model 12-8.2
X-band horn (8.2- 12.4 GHz)		Narda 640
X-band horn (8.2- 12.4 GHz)		Scientific Atlanta , 12-8.2, SN: 730
K-band horn (18-26.5 GHz)		FXR, Inc., K638KF
Ka-band horn (26.5-40 GHz)		FXR, Inc., U638A
U-band horn (40-60 GHz)		Custom Microwave, HO19
W-band horn(75-110 GHz)		Custom Microwave, HO10
G-band horn (140-220 GHz)		Custom Microwave, HO5R
Bicone Antenna (30-250 MHz)	X	University of Michigan, RLBC-1
Bicone Antenna (200-1000 MHz)	X	University of Michigan, RLBC-2
Dipole Antenna Set (30-1000 MHz)	X	University of Michigan, RLDP-1,-2,-3
Dipole Antenna Set (30-1000 MHz)		EMCO 2131C, SN: 992
Active Rod Antenna (30 Hz-50 MHz)		EMCO 3301B, SN: 3223
Active Loop Antenna (30 Hz-50 MHz)		EMCO 6502, SN:2855
Ridge-horn Antenna (300-5000 MHz)	X	University of Michigan
Amplifier (5-1000 MHz)	X	Avantak, A11-1, A25-1S
Amplifier (5-4500 MHz)	X	Avantak
Amplifier (4.5-13 GHz)		Avantek, AFT-12665
Amplifier (6-16 GHz)		Trek
Amplifier (16-26 GHz)		Avantek
LISN Box		University of Michigan
Signal Generator	X	Hewlett-Packard 8657B

3. Configuration and Identification of Device Under Test

The DUT is a 315 MHz superheterodyne receiver, designed for onboard automobile security/convenience applications, and as such, it is powered from an automotive 12 VDC source. It is housed in a plastic case approximately 2 by 2.5 by 1 inches; antenna is internal. For testing, a generic three meter harness was provided by the manufacturer. The (12 VDC) power wires were separated from the signal wires. In the receiver digital section, the decoding, signal processing, etc. are performed by a microprocessor timed by an 32.7 kHz oscillator. The DUT has an LO frequency of 325.7 MHz.

The DUT was designed and manufactured by TRW Inc, 24175 Research Drive, Farmington Hills, MI 48335-2642. It is identified as:

TRW Inc Receiver
Model: 500N/592N
S/N or P/N: 208305-1
FCC ID: GQ43VT29R
IC: 1470A-1R

3.1 Modifications Made

There were no modifications made to the DUT by this laboratory.

4. Emission Limits

The DUT tested falls under Part 15, Subpart B, "Unintentional Radiators". The pertinent test frequencies, with corresponding emission limits, are given in Tables 4.1 and 4.2 below.

4.1 Radiated Emission Limits

Table 4.1. Radiated Emission Limits (Ref: 15.33, 15.35, and 15.109).

Freq. (MHz)	E _{lim} (3m) μ V/m	E _{lim} dB(μ V/m)
30-88	100	40.0
88-216	150	43.5
216-960	200	46.0
960-2000	500	54.0

Note: Quasi-Peak readings apply to 1000 MHz (120 kHz BW)
Average readings apply above 1000 MHz (1 MHz BW)

4.2 Conducted Emission Limits

Table 4.2. Conducted Emission Limits (Ref: 15.107).

Freq. (MHz)	μ V	dB(μ V)
0.450 - 1.705	250	48.0
1.705 - 30.0	250	48.0

Note: Quasi-Peak readings apply here

4.3 Antenna Power Conduction Limits

Ref: 15.111(a). Pmax = 2 nW; for frequency range see Table 4.1.

5. Emission Tests and Results

NOTE: Even though the FCC and/or Industry Canada specify that both the radiated and conductive emissions be measured using the Quasi-Peak and/or average detection schemes, we normally use peak detection since especially the Quasi-Peak is cumbersome to use with our instrumentation. In case the measurement fails to meet the limits, or the measurement is near the limit, it is re-measured using appropriate detection. We note, that since the peak detected signal is always higher or equal to the Quasi-Peak or average detected signal, the margin of compliance may be better, but not worse, than indicated in this report. The type of detection used is indicated in the data table, Table 5.1.

5.1 Anechoic Chamber Radiated Emission Tests

To familiarize with the radiated emission behavior of the DUT, it was studied and measured in the shielded anechoic chamber. In the chamber there is a set-up similar to that of an outdoor 3-meter site, with turntable, antenna mast, and a ground plane. Instrumentation includes spectrum analyzers and other equipment as needed.

To study and test for radiated emissions, the DUT was powered by a laboratory power supply at 12 VDC. A MHz CW signal was injected (radiated) from a nearby signal generator using a short wire antenna. The DUT was taped to a Styrofoam block and placed on the test table on each of the three axis. At each orientation, the table was rotated to obtain maximum signal for vertical and horizontal emission polarizations. This sequence was repeated throughout the required frequency range.

In the chamber we studied and recorded all the emissions using a ridge-horn antenna, which covers 200 MHz to 5000 MHz, up to 2 GHz. In scanning from 30 MHz to 2.0 GHz, there were no spurious emissions observed other than the LO and injection signal (315 MHz), and the LO harmonics. Figures 5.1 and 5.2 show emissions measured 0-1000 MHz and 1000-2000 MHz, respectively. These measurements are made with a ridge-horn antenna at 3m, with spectrum analyzer in peak hold mode and the receiver rotated in all orientations. The measurements up to 1000 MHz (Fig. 5.1) are used for initial evaluation only, while those above 1000 MHz (Fig. 5.2) are used in final assessment for compliance.

5.2 Open Site Radiated Emission Tests

The DUT was then moved to the 3 meter Open Field Test Site where measurements were repeated up to 1000 MHz using a small Bicone, or dipoles when the measurement is near the limit. The DUT was exercised as described in Sec. 5.1 above. The measurements were made with a spectrum analyzer using 120 kHz IF bandwidth and peak detection mode, and, when appropriate, using Quasi-Peak or average detection (see 5.0). Some times lower IF bandwidth is used to help bring signals out of noise and this is noted in the data table. Photographs included in this filing show the DUT on the Open Area Test Site (OATS).

The emissions from digital circuitry were measured using a standard Bicone. These results are also presented in Table 5.1.

5.3 Computations and Results for Radiated Emissions

To convert the dBm's measured on the spectrum analyzer to dB(μ V/m), we use expression

$$E_3(\text{dB}\mu\text{V/m}) = 107 + P_R + K_A - K_G$$

where P_R = power recorded on spectrum analyzer, dB, measured at 3m
 K_A = antenna factor, dB/m
 K_G = pre-amplifier gain, including cable loss, dB

When presenting the data, at each frequency the highest measured emission under all of the possible orientations is given. Computations and results are given in Table 5.1. There we see that the DUT meets the limit by 16.9 dB.

5.4 Conducted Emission Tests

These tests do not apply, since the DUT is powered from an 12 VDC system.

6. Other Measurements

6.1 Emission Spectrum Near Fundamental

Near operating frequency the emission spectrum is measured typically over 50 MHz span with and without injection signal. These data are taken with the DUT close to antenna and hence amplitudes are relative. The plots are shown in Figure 6.1.

6.2 Effect of Supply Voltage Variation

The DUT has been designed to operate from 12 VDC power. Using a spectrum analyzer, relative radiated emissions are generally recorded at the LO (325.7 MHz) as voltage is varied from 6.0 to 18.0 VDC. However, no LO emissions could be measured from this device.

6.3 Operating Voltage and Current

$$\begin{aligned} V &= 12 \text{ VDC} \\ I &= 1.3 \text{ mADC} \end{aligned}$$

The University of Michigan
Radiation Laboratory
3228 EECS Building
Ann Arbor, MI 48109-2122
Tel: (734) 764-0500

Table 5.1 Highest Emissions Measured

Radiated Emission - RF											TRW RX; FCC/IC
#	Freq. MHz	Ant. Used	Ant. Pol.	Pr dBm	Det. Used	Ka dB/m	Kg dB	E3 dBµV/m	E3lim dBµV/m	Pass dB	Comments
1	325.7	Dip	H	-81.6	Pk	20.4	19.0	26.8	46.0	19.2	max. of all, noise; 10 kHz BW
2	325.7	Dip	V	-82.2	Pk	20.4	19.0	26.2	46.0	19.8	max. of all, noise; 10 kHz BW
3	651.4	Dip	H	-88.7	Pk	26.3	15.6	29.1	46.0	16.9	max. of all, noise; 10 kHz BW
4	651.4	Dip	V	-92.0	Pk	26.3	15.6	25.8	46.0	20.2	max. of all, noise; 10 kHz BW
5	977.1	Dip	H	-97.1	Pk	29.8	13.0	26.7	54.0	27.3	max. of all, noise; 10 kHz BW
6	977.1	Dip	V	-96.9	Pk	29.8	13.0	26.9	54.0	27.1	max. of all, noise; 10 kHz BW
7	1302.8	Horn	H	-72.0	Pk	20.6	28.0	27.6	54.0	26.4	max. of all, noise
8	1628.5	Horn	H	-70.0	Pk	21.0	28.1	29.9	54.0	24.1	max. of all, noise
9	1954.2	Horn	H	-72.0	Pk	21.3	28.3	28.0	54.0	26.0	max. of all, noise
10	2279.9	Horn	H	-70.0	Pk	21.4	28.2	30.2	54.0	23.8	max. of all, noise
11	2605.6	Horn	H	-70.0	Pk	21.8	27.9	30.9	54.0	23.1	max. of all, noise
12	2931.3	Horn	H	-69.0	Pk	22.2	28.2	32.0	54.0	22.0	max. of all, noise
13	3257.0	Horn	H	-69.0	Pk	22.4	28.3	32.1	54.0	21.9	max. of all, noise
14											
15											
16											
17											
18											
19											
20											
21											
22	Digital emissions more than 20 dB below FCC/IC Class B Limit.										
23											
24											
25											
26											
27											

Conducted Emissions							
#	Freq. MHz	Line Side	Det. Used	Vtest dBµV	Vlim dBµV	Pass dB	Comments
							Not applicable

Meas.8/29/2002; U of Mich.

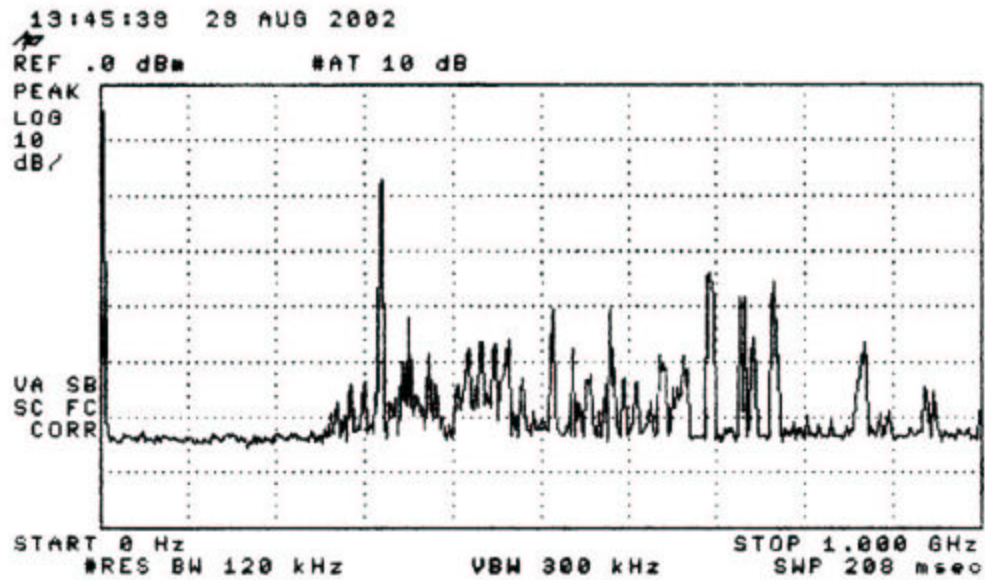
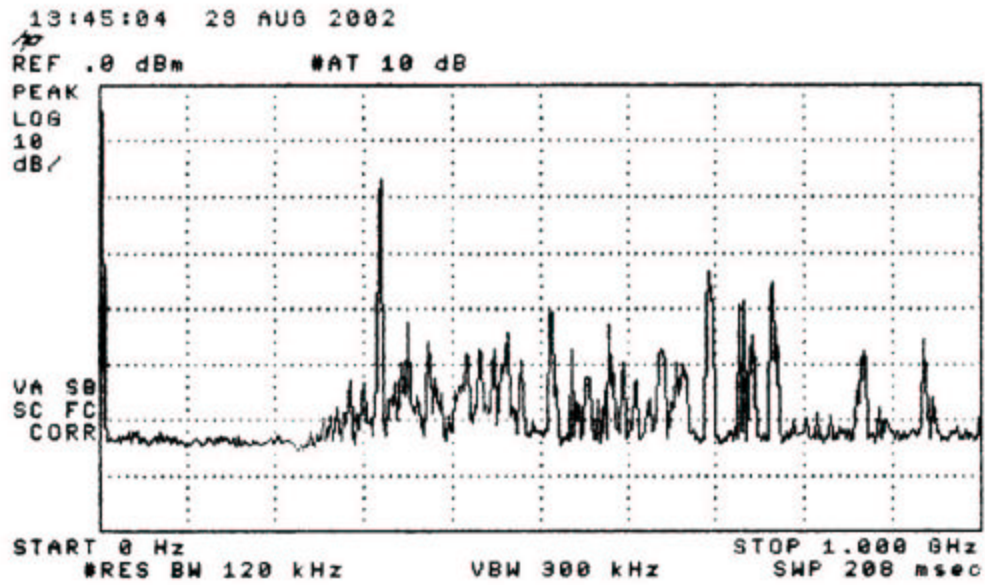


Figure 5.1. Emissions measured at 3 meters in anechoic chamber, 0-1000 MHz.
 (top) Receiver plus ambient
 (bottom) Ambient

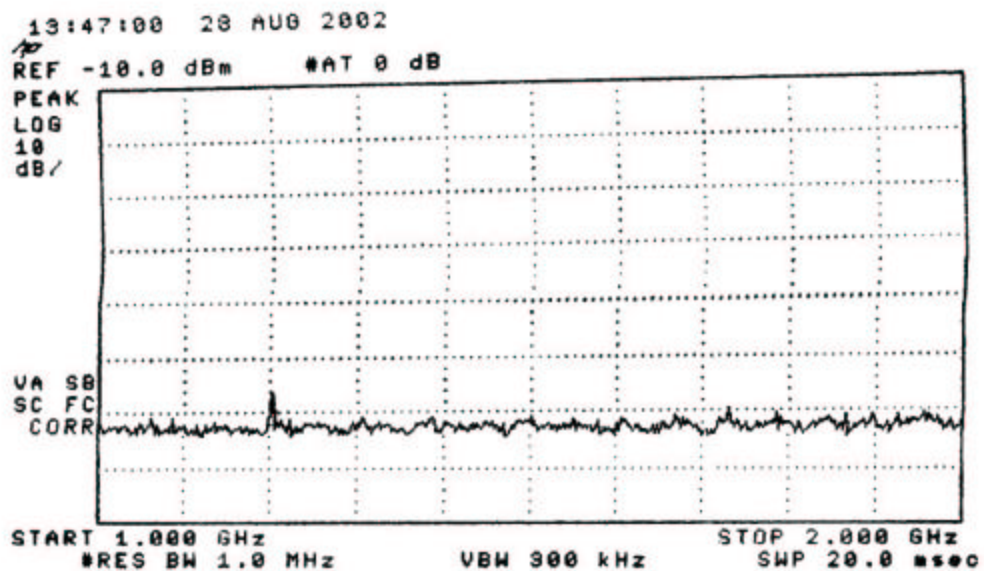
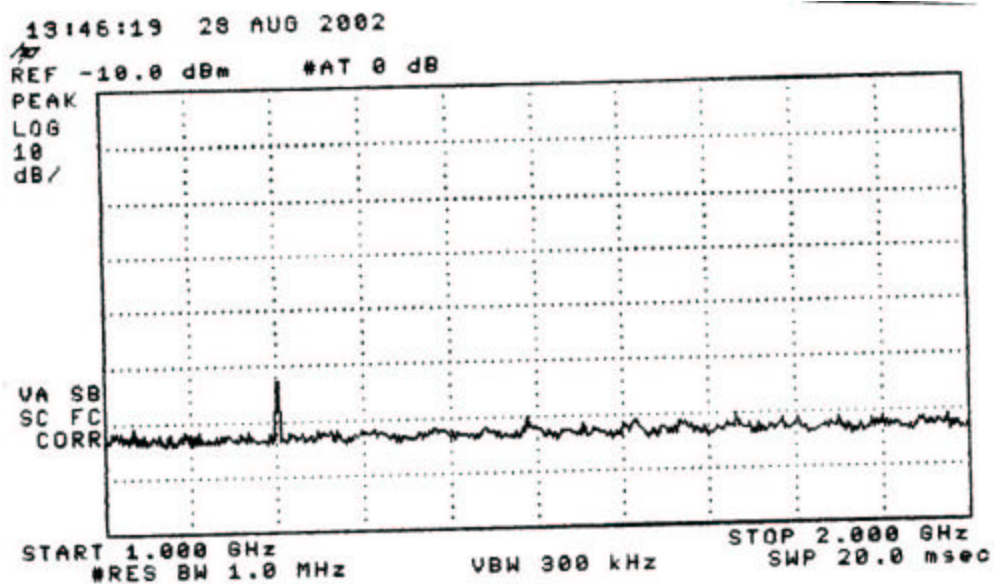


Figure 5.2. Emissions measured at 3 meters in anechoic chamber, 1000-2000 MHz.
(top) Receiver plus ambient, (bottom) Ambient

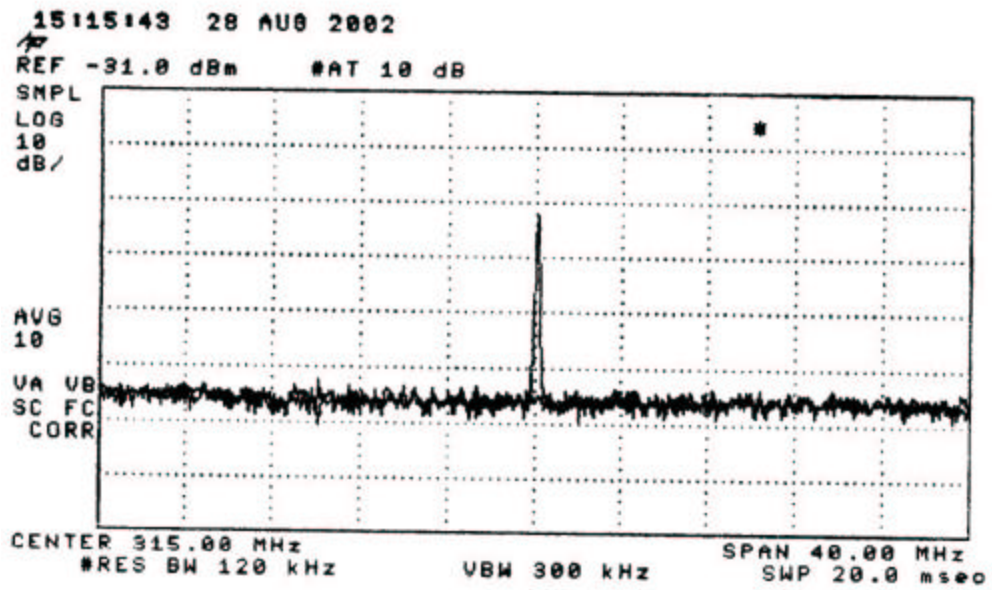


Figure 6.1. Relative receiver emissions in stand-by and "locked-in" modes. The final emission measurements were made with the receiver in "locked-in" mode.