

8

7

6

5

4

DWG NO.

210152

SH

REV

4

2

1

REVISIONS

REV	DESCRIPTION	DATE	RELEASED
1	PRELIMINARY RELEASE	03-08-02	
2	PRELIMINARY RELEASE	04-15-02	
3	PRELIMINARY RELEASE	07-24-02	
4	PRELIMINARY RELEASE	09-03-02	

NOTES:

1. STANDARD SYMBOLS:

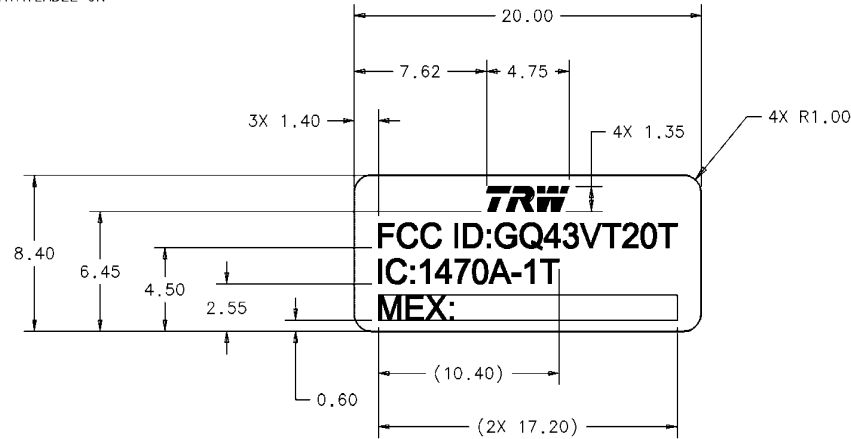
S DENOTES SIGNIFICANT CHARACTERISTIC WHICH MUST BE CONTROLLED IN ACCORDANCE WITH SPECIFIC CUSTOMER GUIDELINES.

C DENOTES CRITICAL CHARACTERISTIC WHICH MUST BE CONTROLLED IN ACCORDANCE WITH SPECIFIC CUSTOMER GUIDELINES.

2. PPAP APPROVAL MUST BE OBTAINED BEFORE SHIPMENT OF PRODUCTION QUANTITIES. AFTER PPAP APPROVAL, NO CHANGES OR DEVIATIONS OF THE MATERIAL AND/OR PROCESSES USED TO MANUFACTURE THE PRODUCTION VERIFICATION SAMPLES OR THE PRODUCTION MATERIAL ARE ALLOWED WITHOUT PRIOR WRITTEN APPROVAL FROM TRW USING THE SUPPLIER REQUEST FOR CHANGE (SRC) PROCESS.

3. THE LATEST VERSION OF THE "GLOBAL SUPPLIER QUALITY MANUAL" (AVAILABLE ON THE CORPORATE WEBSITE) APPLIES.

4. INSERT AREA FLUSH TO +0.00/-0.10
TEXT RECESSED 0.25 +0.00/-0.10



**PRELIMINARY
-NEED MEX ID#**

PART NUMBER	NOMENCLATURE OR DESCRIPTION	MATERIAL	ITEM
210152-1	SPEC; INSERT; TOYO; TRANSMITTER	-	1

PARTS LIST

<p>PROPRIETARY NOTICE</p> <p>THESE DOCUMENTS, AND THE INFORMATION CONTAINED HEREIN, ARE PROPRIETARY AND ARE NOT TO BE REPRODUCED, USED, OR DISCLOSED TO OTHERS FOR MANUFACTURE OR FOR ANY OTHER PURPOSE, EXCEPT AS SPECIFICALLY AUTHORIZED, IN WRITING, BY TRW AUTOMOTIVE ELECTRONICS GROUP.</p>		<p>UNLESS OTHERWISE SPECIFIED DIMENSIONS ARE IN MILLIMETERS</p> <p>TOLERANCES ON</p> <p>1 PLACE ±0.3</p> <p>2 PLACES ±0.13</p> <p>ANGLE ±1°</p>	<p>APPROVAL</p> <p>DATE</p> <p>Automotive Electronics Group 24175 Research Drive Farmington Hills, MI 48335-2642</p> <p>TRW</p>	<p>TITLE</p> <p>SPEC; INSERT; TOYO; TRANSMITTER</p>
<p>NEXT ASSY</p> <p>USED ON</p> <p>APPLICATION</p>	<p>DO NOT SCALE</p>	<p>THIRD ANGLE PROJECTION</p>	<p>APPROVD</p> <p>CONFIG MIGHT</p>	<p>SIZE</p> <p>A2</p> <p>DWG NO.</p> <p>SK210152</p> <p>SCALE 5:1</p> <p>SHEET 1 of 1</p>
				<p>REV.</p> <p>4</p>

8

7

6

5

4

3

2

1

NAME & PART NO.: SPEC_INSERT_TOYO_TRANSMITTER 210152

LIBRARY: 03_3_TOYO_A_5000.LIB

PROJECT: EES_AS1A_JACIFIC_MASTER

2018026-101
1001-926816