

The University of Michigan  
Radiation Laboratory  
3228 EECS Building  
Ann Arbor, MI 48109-2122  
Tel: (734) 647-1792

Measured Radio Frequency Emissions  
From

**TRW RS 6-Button Transmitter  
Model: GQ43VT18T  
(6-volt Version)**

Report No. 415031-051  
June 21, 2000

Copyright © 2000

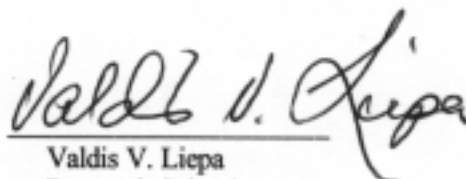
For:  
TRW Automotive Electronics  
24175 Research Drive  
Farmington Hills, MI 48335-2642

Contact:  
Daliang Shi  
Tel: (248) 442-5389  
Fax: (248) 478-7241  
PO: A2731011221

Measurements made by:

Joseph Brunett  
Julie Zeigler

Tests supervised by:  
Report approved by:

  
Valdis V. Liepa  
Research Scientist

---

**Summary**

Tests for compliance with FCC Regulations, Part 15, Subpart C, and for compliance with Industry Canada RSS-210, were performed on TRW RS 6-Button Transmitter. This device is subject to the Rules and Regulations as a transmitter and as a digital device.

In testing performed June 14<sup>th</sup>, 2000, the device tested in the worst case met the allowed specifications for radiated emissions by 6.7 dB at fundamental and by 1.2 dB at harmonics (see p. 6). Besides harmonics, there were no other significant spurious emissions found; emissions from digital circuitry were negligible. The line conducted emission tests do not apply, since the device is powered by two 3 VDC batteries.

## 1. Introduction

TRW RS 6-Button Transmitter, was tested for compliance with FCC Regulations, Part 15, adopted under Docket 87-389, April 18, 1989, and with Industry Canada RSS-210, Issue 2, dated February 14, 1998. The tests were performed at the University of Michigan Radiation Laboratory Willow Run Test Range following the procedures described in ANSI C63.4-1992 "Methods of Measurement of Radio-Noise Emissions from Low-Voltage Electrical and Electronic Equipment in the Range of 9 kHz to 40 GHz". The Site description and attenuation characteristics of the Open Site facility are on file with FCC Laboratory, Columbia, Maryland. (FCC file 31040/SIT) and with Industry Canada, Ottawa, ON (File Ref. No: IC2057).

## 2. Test Procedure and Equipment Used

The test equipment commonly used in our facility is listed in Table 2.1 below. The second column identifies the specific equipment used in these tests. The HP 8593E spectrum analyzer is used for primary amplitude and frequency reference.

Table 2.1. Test Equipment.

Test Instrument	Equipment Used	Manufacturer/Model	Cal. Date/By
Spectrum Analyzer (9kHz-22GHz)	X	Hewlett-Packard 8593A SN: 3107A01358	October 1999/UM
Spectrum Analyzer (9kHz-26GHz)	X	Hewlett-Packard 8593E SN: 3107A01131	September 1999/HP
Spectrum Analyzer (0.1-1500 MHz)		Hewlett-Packard 182T/8558B SN: 1529A01114/543592	October 1999/U of M Rad Lab
Preamplifier (5-1000MHz)	X	Watkins-Johnson A11 -1 plus A25-1S	October 1999/U of M Rad Lab
Preamplifier (5-4000 MHz)	X	Avantek	Oct. 1999/ U of M Rad Lab
Broadband Bicone (20-200 MHz)	X	University of Michigan	June 1996/U of M Rad Lab
Broadband Bicone (200-1000 MHz)		University of Michigan	June 1996/U of M Rad Lab
Dipole Antenna Set (25-1000 MHz)	X	University of Michigan	Dec. 1997/U of M Rad Lab
Dipole Antenna Set (30-1000 MHz)		EMCO 3121C SN: 992	June 1996/U of M Rad Lab
Active Loop Antenna (0.090-30MHz)		EMCO 6502 SN: 2855	December 1993/ EMCO
Active Rod (30Hz-50 MHz)		EMCO 3301B SN: 3223	December 1993/EMCO
Ridge-horn Antenna (0.5-5 GHz)	X	University of Michigan	March 1999/U of M Rad Lab
LISN Box		University of Michigan	Dec. 1997/U of M Rad Lab
Signal Cables	X	Assorted	January 1993/U of M Rad Lab
X-Y Plotter		Hewlett-Packard 7046A	During Use/U of M Rad Lab
Signal Generator (0.1-990 MHz)		Hewlett-Packard 8656A	January 1990/U of M Rad Lab
Printer	X	Hewlett-Packard 2225A	August 1989/HP

### 3. Configuration and Identification of Device Under Test

The DUT is a paper matchbox size six-button low power transmitter designed to send identification and control signals to a companion receiver. It is activated by depressing either of the buttons. When the transmitter is activated by momentary push, it transmits one synchronization word and one ASK encoded (repeated) word. When a button is kept depressed, it repeats the ASK encoded words every 71 ms for up to 20 seconds. Coding is performed by a microprocessor. The emission is a pulse-width modulated code on a 315.0 MHz carrier.

The DUT was designed and manufactured by TRW Automotive Electronics Group, 24175 Research Drive, Farmington Hills, MI 48335-2642. It is identified as:

TRW RS 6-Button Transmitter  
PN: 04688859  
Model: GQ43VT18T  
FCC ID: GQ43VT18T  
CANADA: 14701021507

#### 3.1 EMI Relevant Modifications

No modifications were made by this laboratory.

### 4. Emission Limits

#### 4.1 Radiated Emission Limits

The DUT tested falls under the category of an Intentional Radiators and the Digital Devices. For FCC, it is subject to Part 15, Subpart C, (Section 15.231), Subpart B, (Section 15.109), and Subpart A, (Section 15.33). For Industry Canada it is subject to RSS-210, (Sections 6.1 and 6.3). The applicable testing frequencies with corresponding emission limits are given in Tables 4.1 and 4.2 below. As a digital device, the DUT is considered as a Class B device.

Table 4.1. Radiated Emission Limits (FCC: 15.33, 15.35, 15.109; IC: RSS-210, 6.2.2(r)).  
(Digital Class B)

Freq. (MHz)	E <sub>lim</sub> (3m) $\mu$ V/m	E <sub>lim</sub> dB( $\mu$ V/m)
30-88	100	40.0
88-216	150	43.5
216-960	200	46.0
960-2000	500	54.0

Note: Average readings apply above 1000 MHz (1 MHz BW)  
Quasi-Peak readings apply to 1000 MHz (120 kHz BW)

Table 4.2. Transmitter Radiated Emission Limits (FCC: 15.231(b), 15.205(a); IC: RSS-210; 6.1, 6.3).

Frequency (MHz)	Fundamental Ave. E <sub>lim</sub> (3m)		Spurious** Ave. E <sub>lim</sub> (3m)	
	( $\mu$ V/m)	dB ( $\mu$ V/m)	( $\mu$ V/m)	dB ( $\mu$ V/m)
260.0-470.0	3750-12500*		375-1250	
322-335.4 399.9-410 608-614	Restricted Bands		200	46.0
960-1240 1300-1427 1435-1626.5 1660-1710 1718.9-1722.2 2200-2300	Restricted Bands		500	54.0

\* Linear interpolation, formula:  $E = -7083 + 41.67 * f$  (MHz)

\*\* Measure up to tenth harmonic; 120 kHz BW up to 1 GHz, 1 MHz BW above 1 GHz

#### 4.2 Conductive Emission Limits

The conductive emission limits and tests do not apply here, since two internal 3 VDC batteries power the DUT.

### 5. Radiated Emission Tests and Results

#### 5.1 Anechoic Chamber Measurements

To familiarize with the radiated emission behavior of the DUT, the DUT was first studied and measured in a shielded anechoic chamber. In the chamber there is a set-up similar to that of an outdoor 3-meter site, with a turntable, an antenna mast, and a ground plane. Instrumentation includes spectrum analyzers and other equipment as needed.

In testing for radiated emissions, the transmitter was activated using the lock/unlock button with a special wooden clamp for repeated pulse emissions. It was placed on the test table flat, on its side, or on its end.

In the chamber we studied and recorded all the emissions using a bicone antenna up to 300 MHz and a ridged horn antenna above 200 MHz. The measurements made in the chamber below 1 GHz are used for pre-test evaluation only. The measurements made above 1 GHz are used in pre-test evaluation and in the final compliance assessment. We note that for the horn antenna, the antenna pattern is more directive and hence the measurement is essentially that of free space (no ground reflection).

Consequently it is not essential to measure the DUT for both antenna polarizations, as long as the DUT is measured on all three of its major axis. In the chamber we also recorded the spectrum and modulation characteristics of the carrier. These data are presented in subsequent sections. We also note that in scanning from 30 MHz to 3.15 GHz using bicone and the ridge horn antennas, there were no other significant spurious emissions observed.

#### 5.2 Outdoor Measurements

After the chamber measurements, the emissions were re-measured on the outdoor 3-meter site at fundamental and harmonics up to 1 GHz using tuned dipoles and/or the high frequency bicone.

Photographs in Appendix show the DUT on the open in site table (OATS).

### 5.3 Computations and Results

To convert the dBm measured on the spectrum analyzer to dB( $\mu$ V/m), we use expression

$$E_3(\text{dB}\mu\text{V/m}) = 107 + P_R + K_A - K_G + K_E$$

where  $P_R$  = power recorded on spectrum analyzer, dB, measured at 3m  
 $K_A$  = antenna factor, dB/m  
 $K_G$  = pre-amplifier gain, including cable loss, dB  
 $K_E$  = pulse operation correction factor, dB (see 6.1)

When presenting the data, at each frequency the highest measured emission under all of the possible orientations is given. Computations and results are given in Tables 5.1 and 5.2. There we see that the DUT meets the limit by 1.2 dB.

## 6. Other Measurements and Computations

### 6.1 Correction For Pulse Operation

When the transmitter is activated, it transmits PWM code up to 35 seconds, as long as the button remains depressed. For momentary operation, the transmission time of about 200 ms. The transmission consists of a wake-up word (50ms) followed by identification/command words (27.1 ms) repeating every 71.0 ms. A identification/command word consists of 10 narrow (223  $\mu$ s) synch pulses followed by 34 command pulses which, in the worst case, could all be wide (411  $\mu$ s). See Figure 6.1. These repeating words give the worst case, resulting in

$$K_E = (10 * 0.223 \text{ ms} + 34 * 0.411 \text{ ms}) / 71.0 \text{ ms} = 0.229 \text{ or } -12.8 \text{ dB.}$$

### 6.2 Emission Spectrum

Using the ridge-horn antenna and DUT placed in its aperture, emission spectrum was recorded and is shown in Figure 6.2.

### 6.3 Bandwidth of the Emission Spectrum

The measured spectrum of the signal is shown in Figure 6.3. The allowed (-20 dB) bandwidth is 0.25% of 315 MHz, or 787.5 kHz. From the plot we see that the -20 dB bandwidth is 60.0 kHz, and the center frequency is 315.03 MHz.

### 6.4 Effect of Supply Voltage Variation

The DUT has been designed to be powered by two 3 VDC batteries. For this test, the batteries were replaced by a laboratory variable power supply. Relative power radiated was measured at the fundamental as the voltage was varied from 2.5 to 9.0 volts. The emission variation is shown in Figure 6.4.

### 6.5 Input Voltage at Battery Terminals

Batteries:	before testing	$V_{oc}$	=	6.60 V
	after testing	$V_{oc}$	=	6.00 V
Ave. current from batteries		$I$	=	12.6 mA (pulsed)

The University of Michigan  
Radiation Laboratory  
3228 EECS Building  
Ann Arbor, Michigan 48109-2122  
(734) 647-1792

**Table 5.1 Highest Emissions Measured**

Radiated Emission - RF											TRW TX RS, 315MHz, FCC/IC
#	Freq. MHz	Ant. Used	Ant. Pol.	Pr dBm	Det. Used	Ka dB/m	Kg dB	E3* dBμV/m	E3lim dBμV/m	Pass dB	Comments
1	315.0	Dip	H	-23.8	Pk	18.9	20.4	68.9	75.6	6.7	flat
2	315.0	Dip	V	-32.2	Pk	18.9	20.4	60.5	75.6	15.1	end
3	630.0	Dip	H	-62.1	Pk	25.2	17.1	40.3	75.6	35.3	flat
4	630.0	Dip	V	-49.2	Pk	25.2	17.1	53.2	75.6	22.4	end
5	945.0	Dip	H	-54.0	Pk	28.9	14.7	54.4	55.6	1.2	side
6	945.0	Dip	H	-57.8	Pk	28.9	14.7	50.6	55.6	5.0	end
7	1260.0	Horn	H	-38.7	Pk	20.4	28.1	47.8	55.6	7.8	flat
8	1575.0	Horn	H	-51.2	Pk	21.4	28.2	36.2	54.0	17.8	flat
9	1890.0	Horn	H	-49.3	Pk	22.1	28.1	38.9	55.6	16.7	end
10	2205.0	Horn	H	-48.3	Pk	22.9	27.0	41.8	54.0	12.2	flat
11	2520.0	Horn	H	-51.1	Pk	24.0	26.6	40.5	55.6	15.1	flat
12	2835.0	Horn	H	-55.5	Pk	24.9	25.4	38.2	55.6	17.4	flat
13	3150.0	Horn	H	-51.5	Pk	25.2	24.8	43.1	55.6	12.5	flat
14											
15											
16				*Includes 12.8 dB duty factor							
17											
18											
19											
20											
21											

Digital Emissions											
#	Freq. MHz	Ant. Used	Ant. Pol.	Pr dBm	Det. Used	Ka dB/m	Kg dB	E3* dBμV/m	E3lim dBμV/m	Pass dB	Comments
1											
2											
3				Digital emissions are more than 20 dB below FCC Class B limit							
4											

Conducted Emissions							
#	Freq. MHz	Line Side	Det. Used	Vtest dBμV	Vlim dBμV	Pass dB	Comments
1							
2				Not applicable			
3							
4							

Meas. 06/14/00, 06/19/00 ; U of Mich.

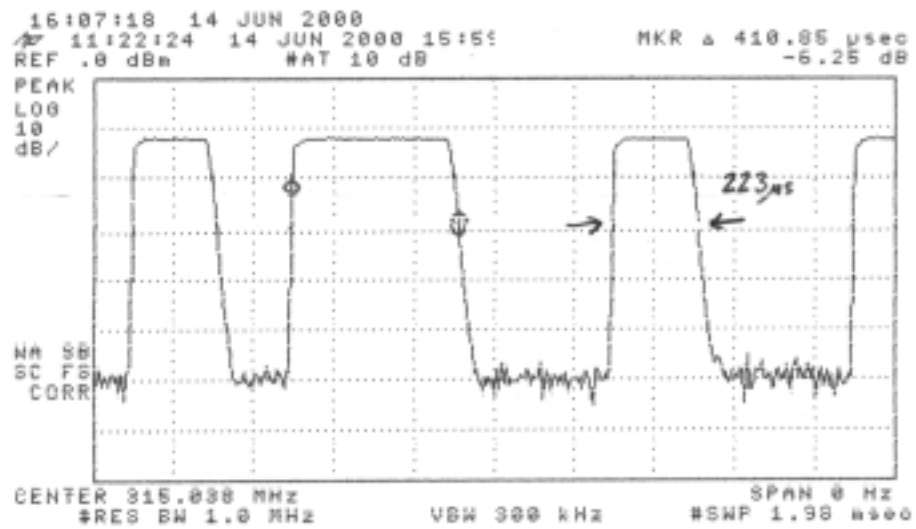
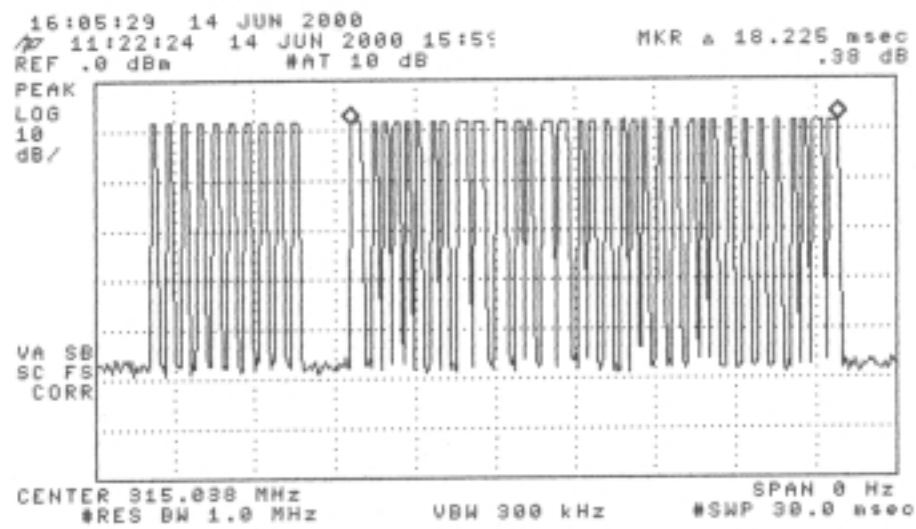
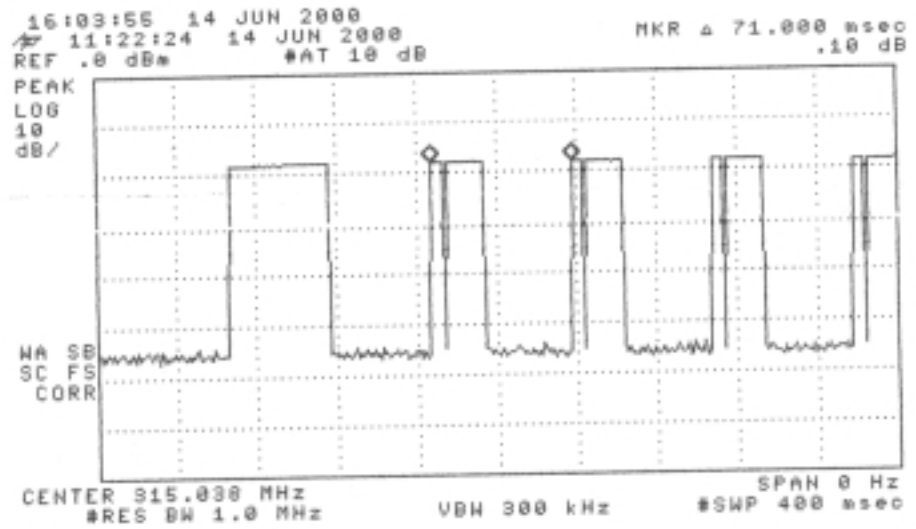


Figure 6.1. Transmissions modulation characteristics: (top) complete transmission, (center) expanded word, (bottom) expanded bits.

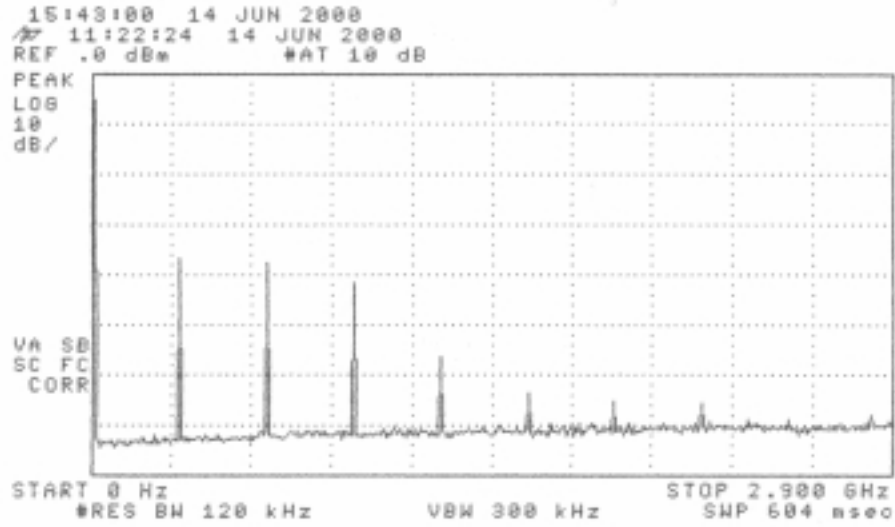


Figure 6.2. Emission spectrum of the DUT (pulsed emission).  
 The amplitudes are only indicative (not calibrated).

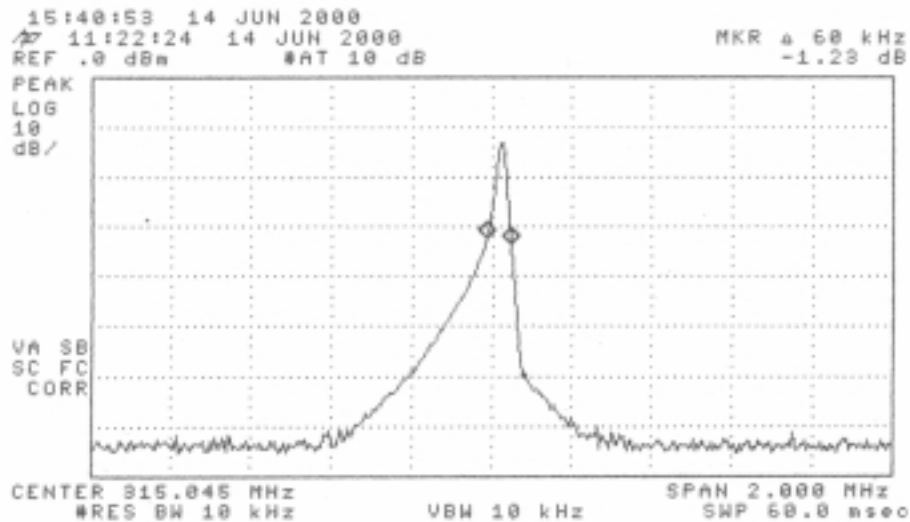


Figure 6.3. Measured bandwidth of the DUT (pulsed emission).



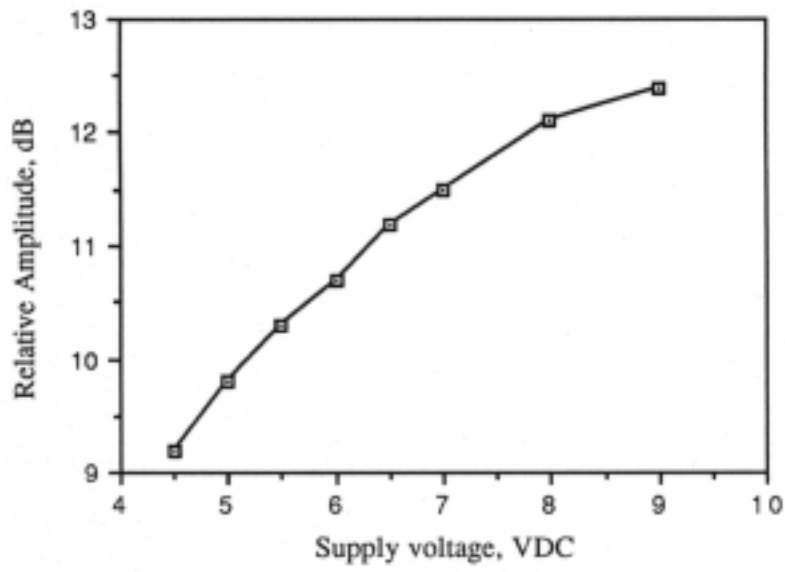


Figure 6.4. Relative emission at 315.0 MHz vs. supply voltage (pulsed emission).