

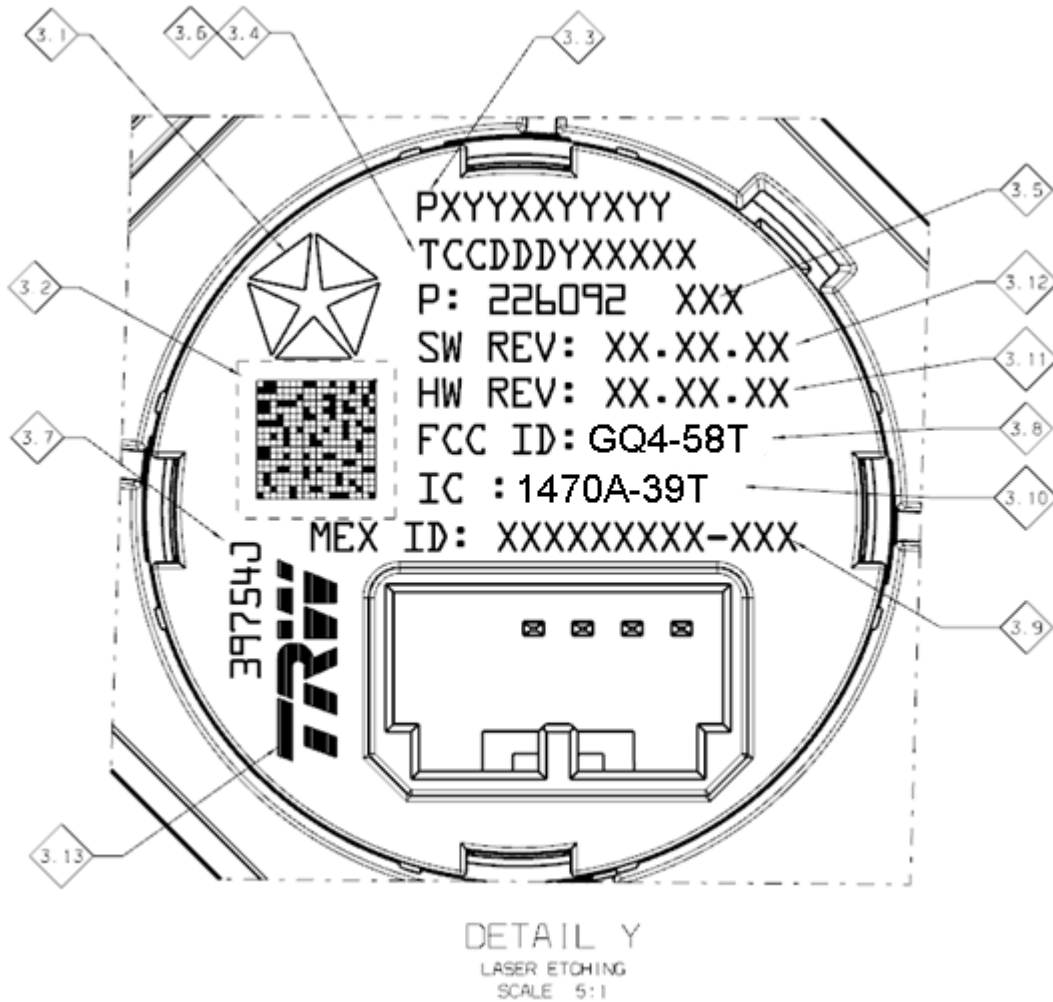
May 14, 2012

TEE
24175 Research Dr.
Farmington Hills, MI 48335-2642
Tel 248.478.7210
Fax 248.699.4241

RE: Certification for Chrysler MY2013 DS KIN

Model #: 226092
FCC ID: GQ4-58T
Canada IC: 1470A-39T

The part markings for this module are laser-etched onto the plastic housing instead of applying a printed label.



ITEMS TO BE LASER MARKED		
3.1	CHRYSLER PENTA STAR	PER CS-11000 A1-6ET. SIZE 6.35 mm
3.2	2D BAR CODE	CONTAINS INFO FOR 3.3 AND 3.4
3.3	HUMAN READABLE CHRYSLER PART NUMBER PS-4480 B7-ET	PXYXXYYXXYY X's – NUMERIC CHARACTERS Y's – ALPHA CHARACTERS CHARACTER HEIGHT : 1.57 mm
3.4	HUMAN READABLE TRACEABILITY PART NUMBER PS-10125	TCCDDDYXXXXX CC – COMPONENT CODE DDD – JULIAN DATE Y – YEAR XXXXX – SEQUENCE NUMBER CHARACTER HEIGHT : 1.57 mm (CONTAINS INFO FOR 3.6)
3.5	HUMAN READABLE TRW PART NUMBER / MODEL NUMBER	CHARACTER HEIGHT : 1.57 mm
3.6	JULIAN DATE CODE AND SEQUENCE NUMBER	CHARACTER HEIGHT : 1.57 mm
3.7	SUPPLIER CODE PS 4480 D7-ET	CHARACTER HEIGHT : 1.57 mm
3.8	FCC CERTIFICATION NUMBER	GQ4-58T
3.9	MEXICAN CERTIFICATION NUMBER	XXXXXXXXXX-XXX
3.10	CANADIAN CERTIFICATION NUMBER	1470A-39T
3.11	HARDWARE REVISION	0B-1B-01
3.12	SOFTWARE REVISION	0C-12-01
3.13	TRW LOGO	HEIGHT : 3 mm

Laser Marking Chart