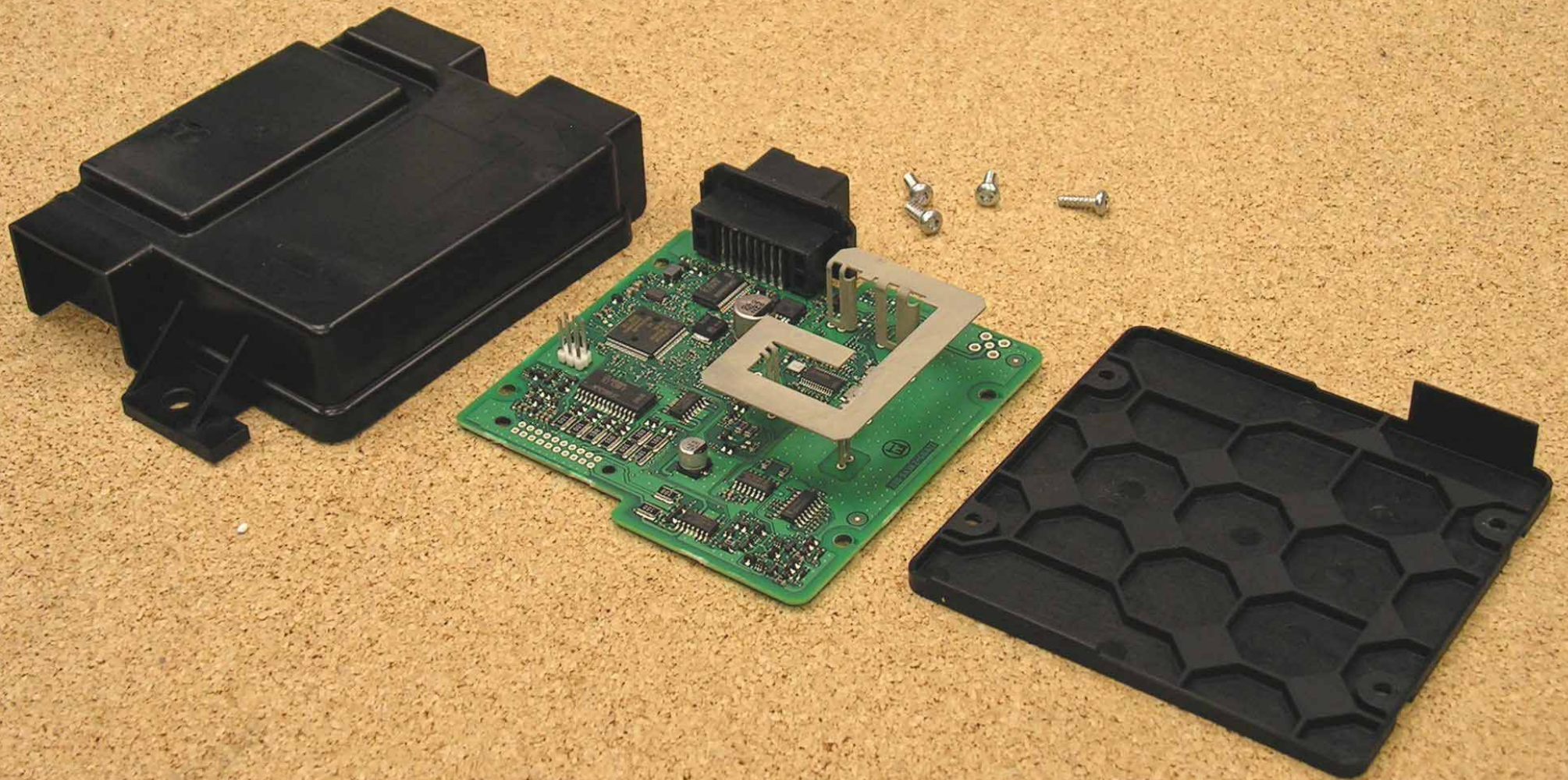
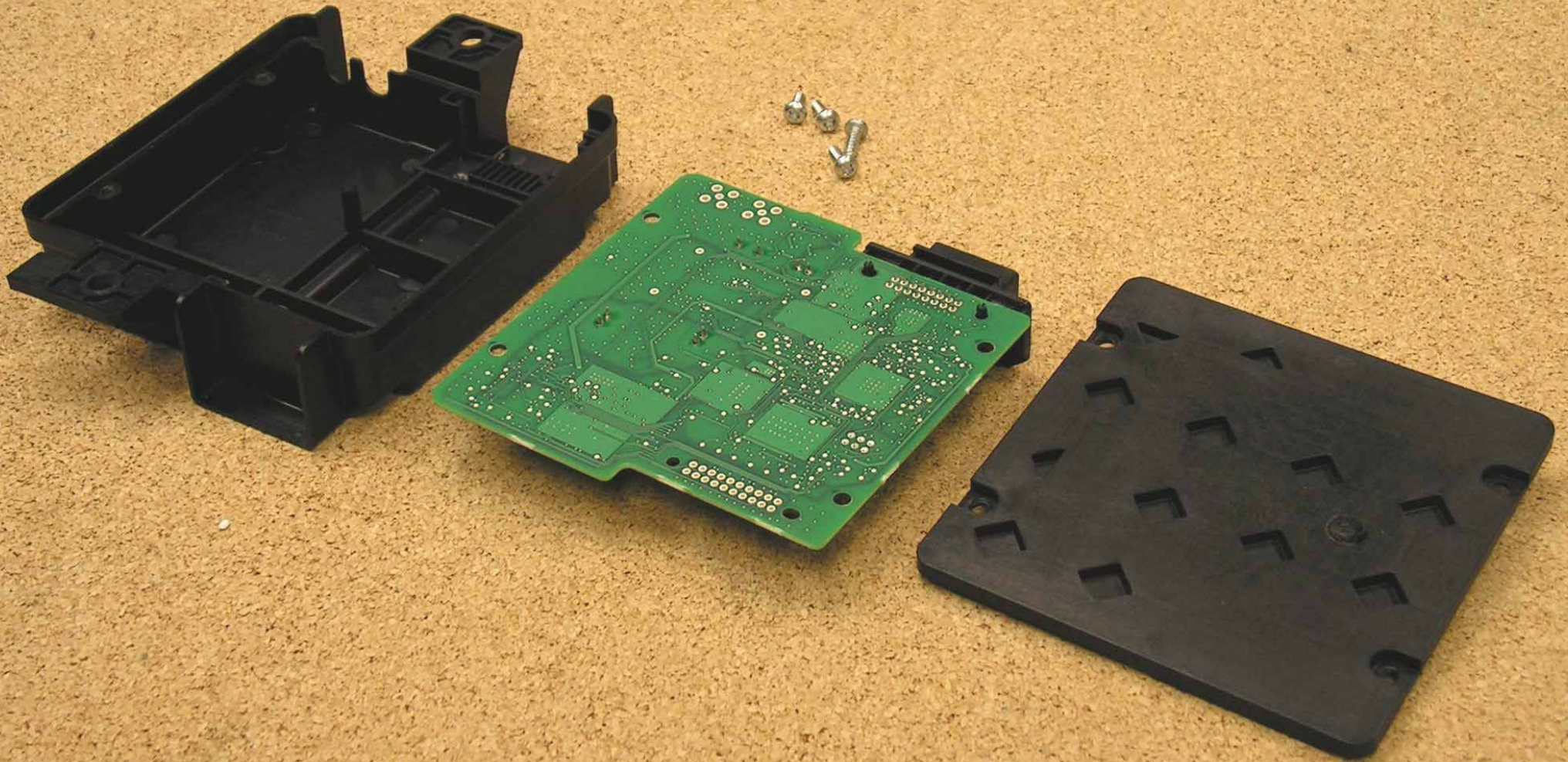


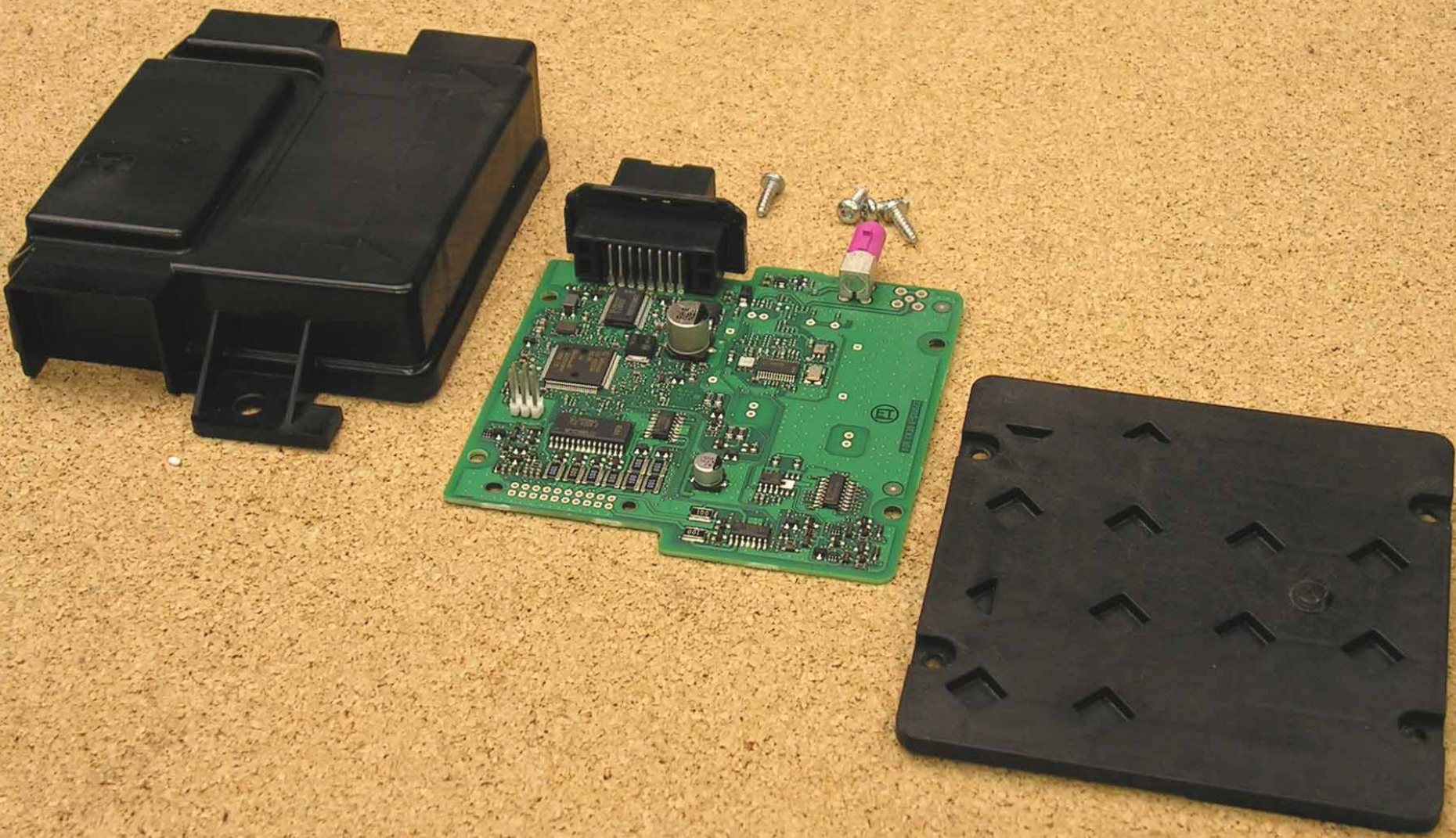
DUT apart (top)



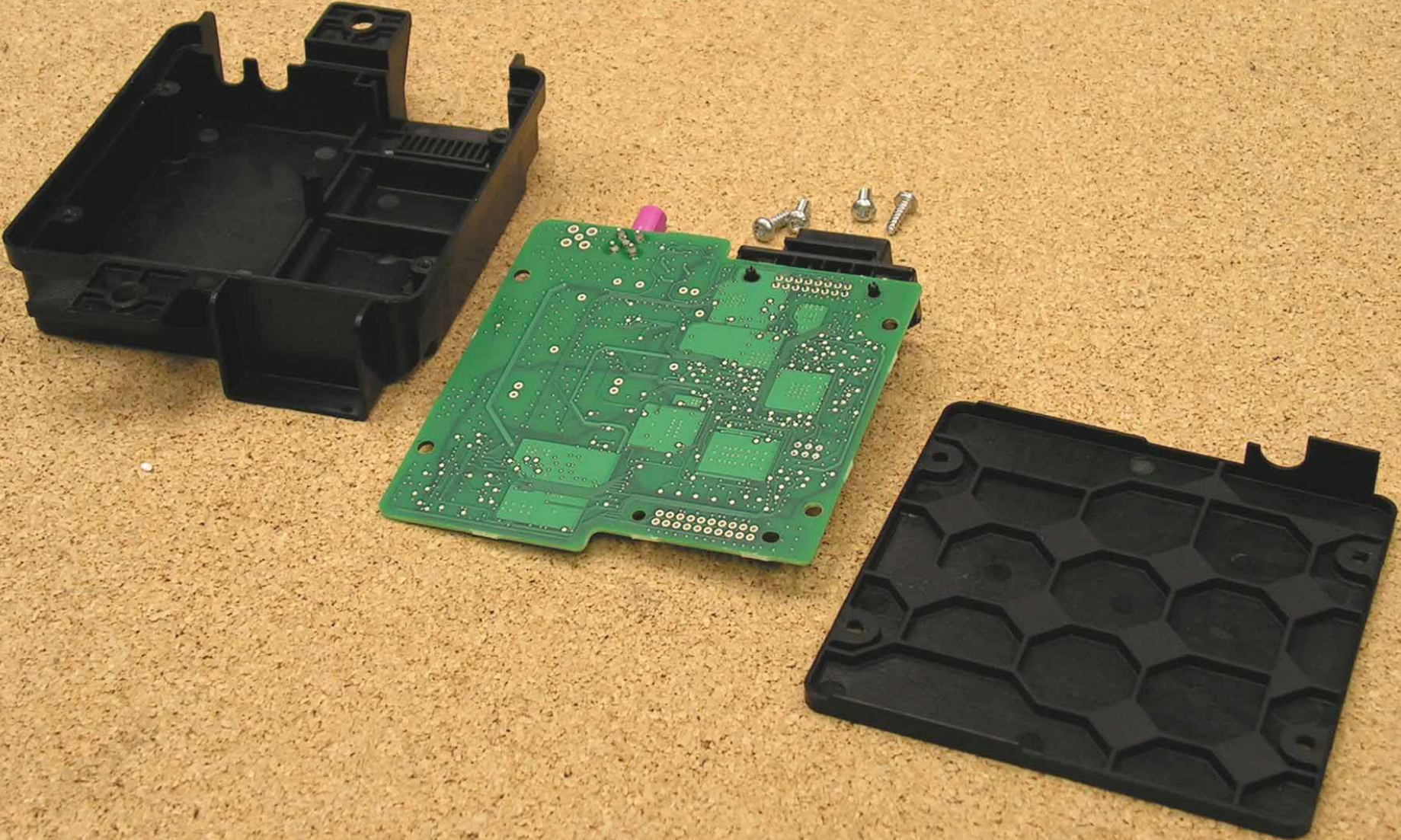
DUT apart (bottom)



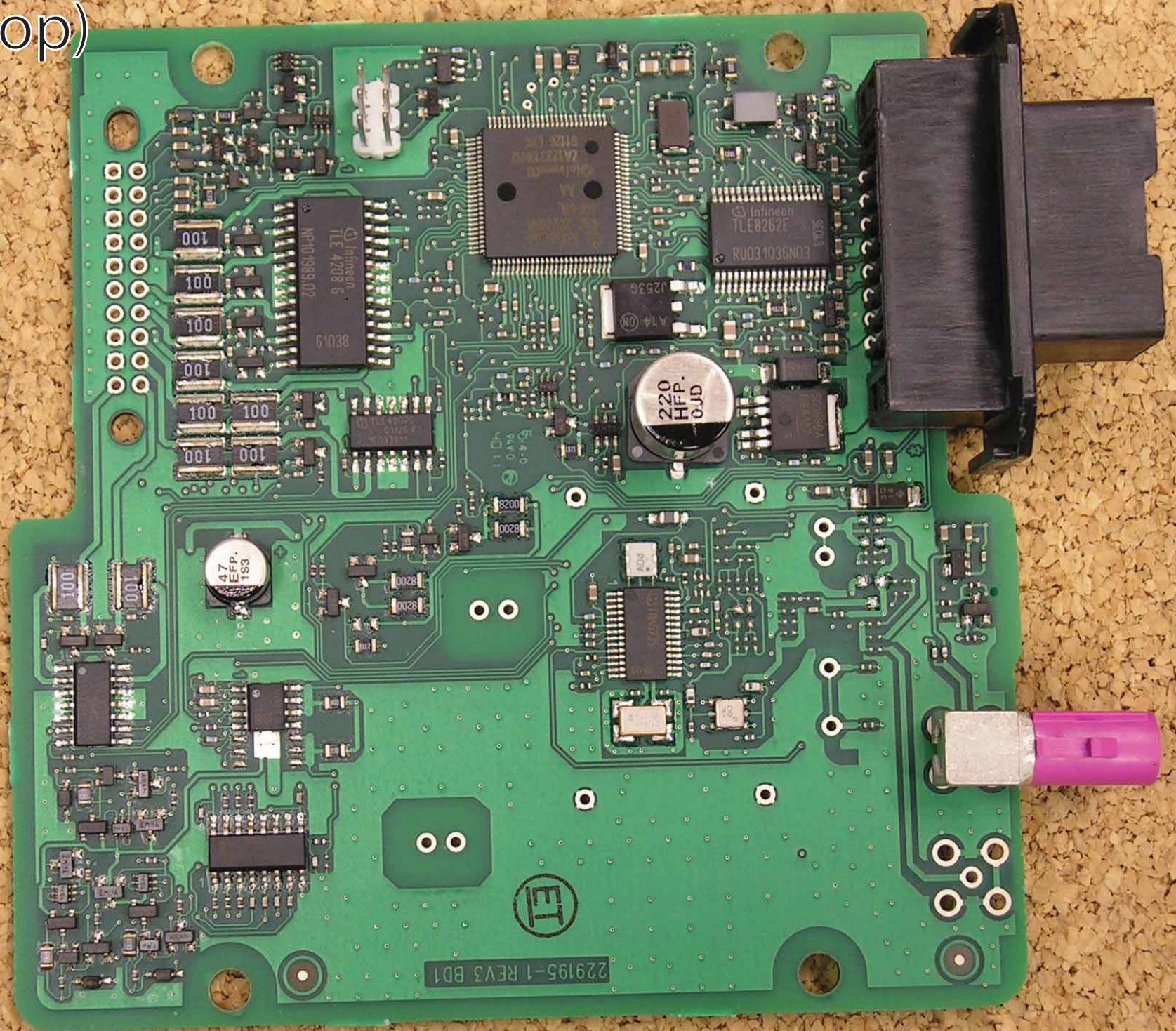
DUT apart (top)



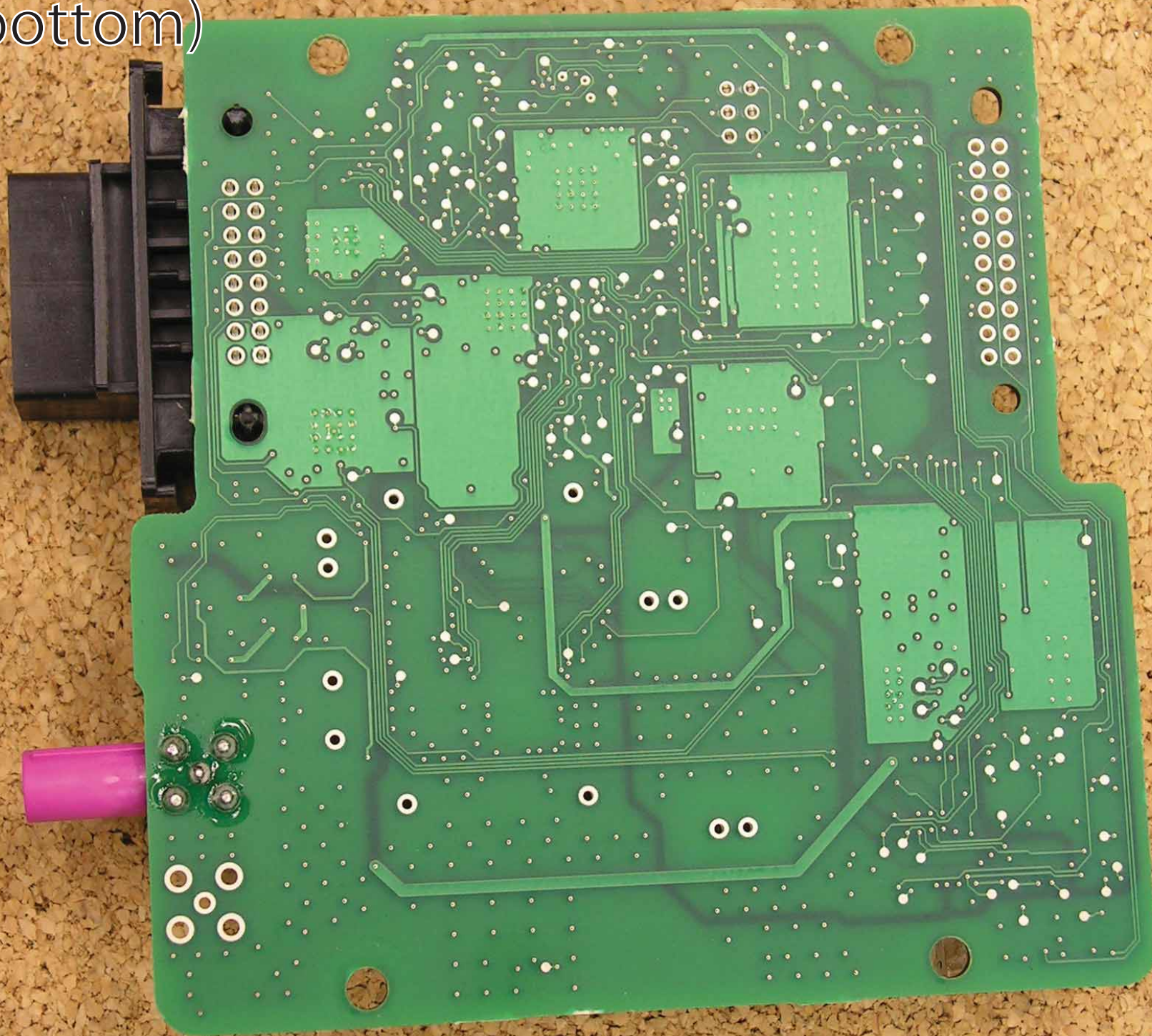
DUT apart (bottom)



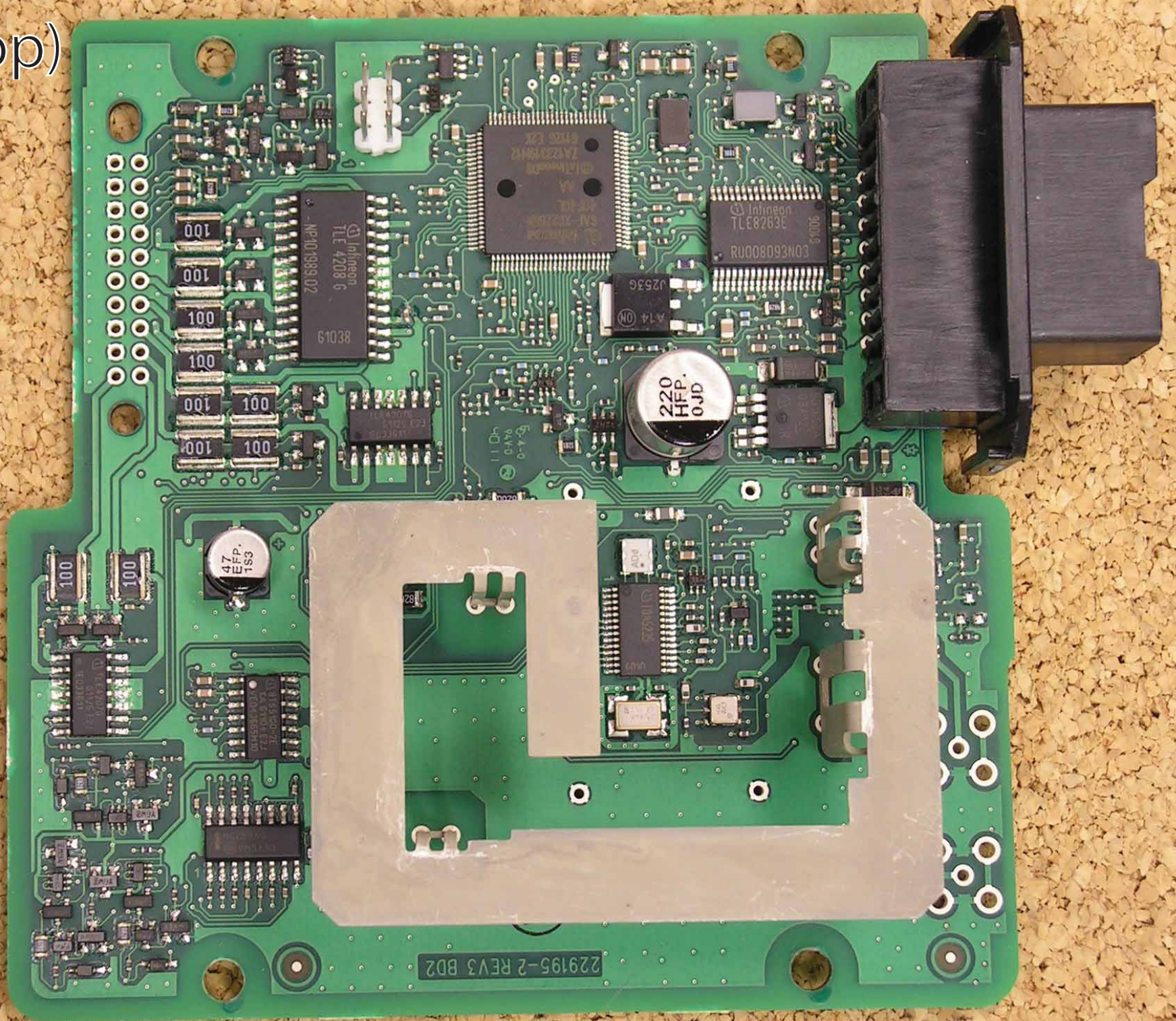
PCB (top)

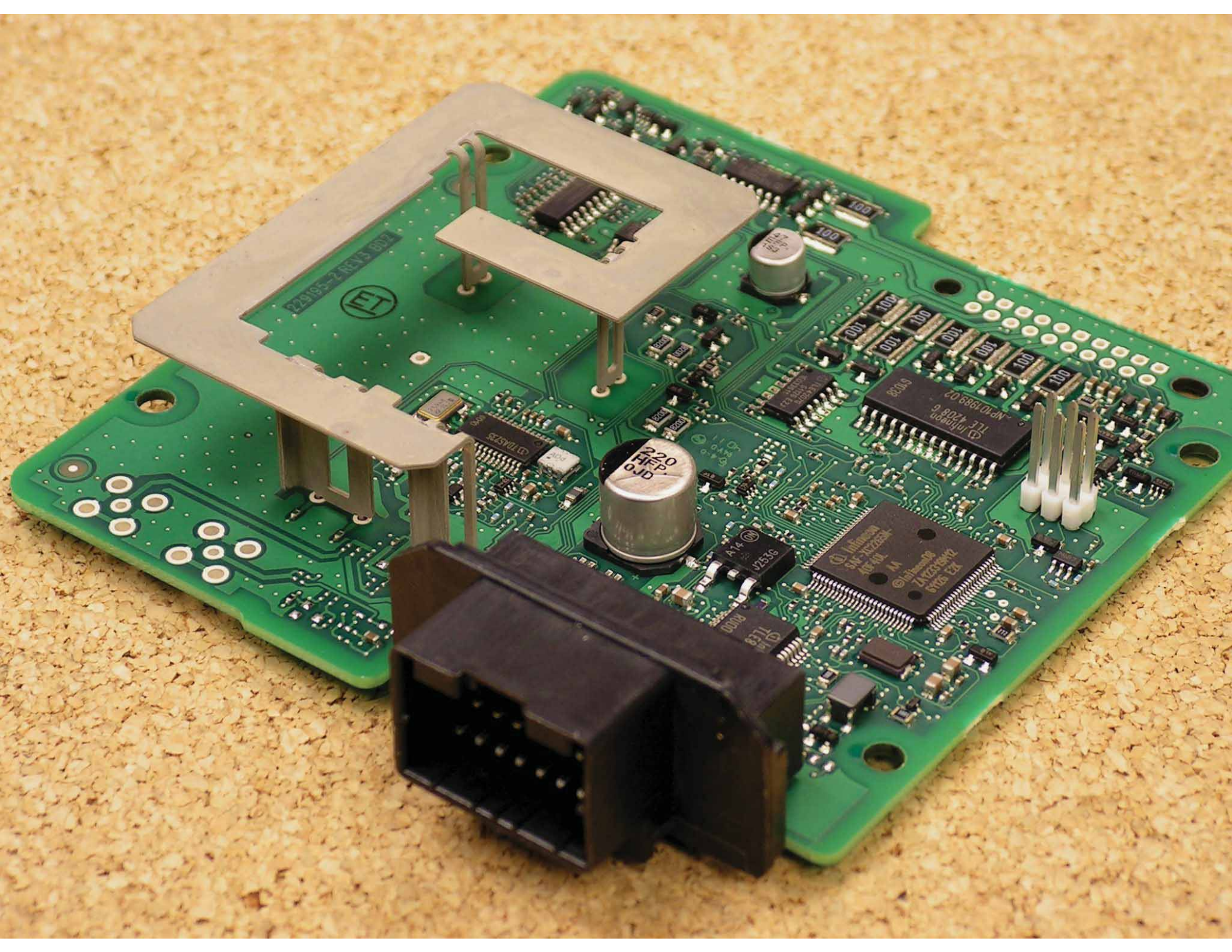


PCB (bottom)

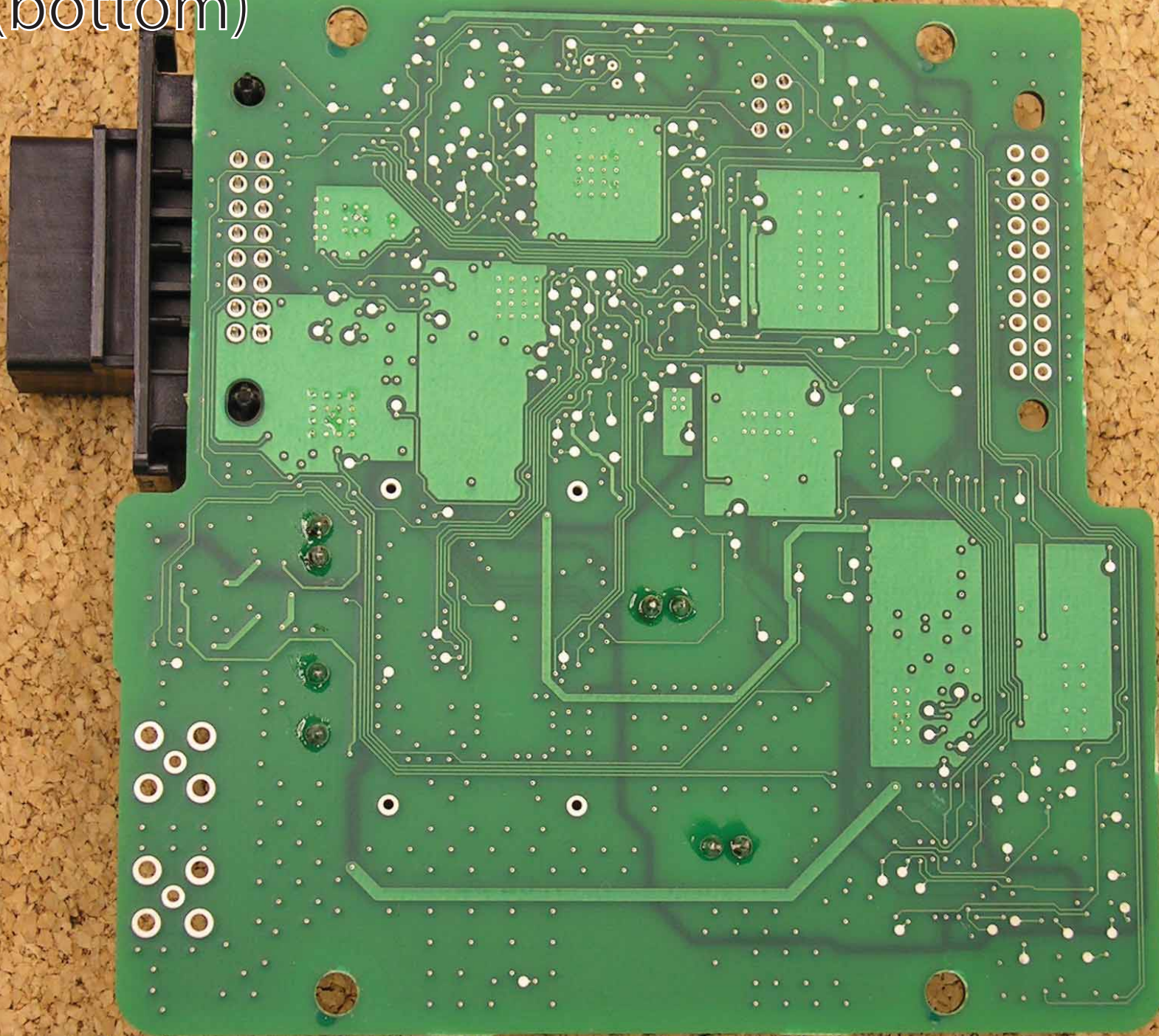


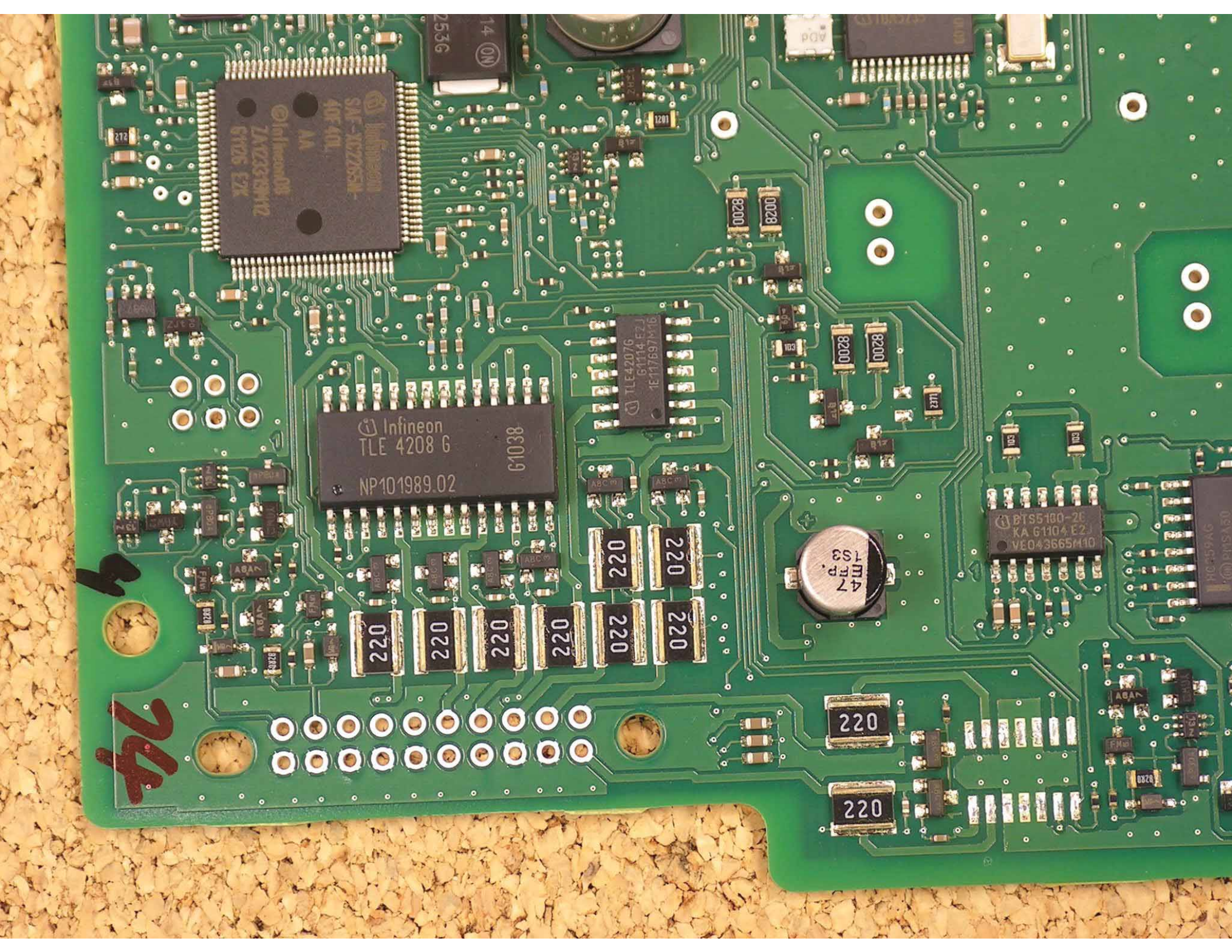
PCB (top)





PCB (bottom)





74

Infineon
SAF-XCZ651L
40F40L
AA
ZAVZ33M12
6VDS EX

Infineon
TLE 4208 G
NP101989.02
61038

TLE42076
G1114 E2
1E117697M16

47
ERP
1S3

BTS5100-2C
KA G1104 E2
VE043665M10

220
220
220
220
220
220
220

220

220

2536
14 (ON)

8200
0028

8200
0028

11E7

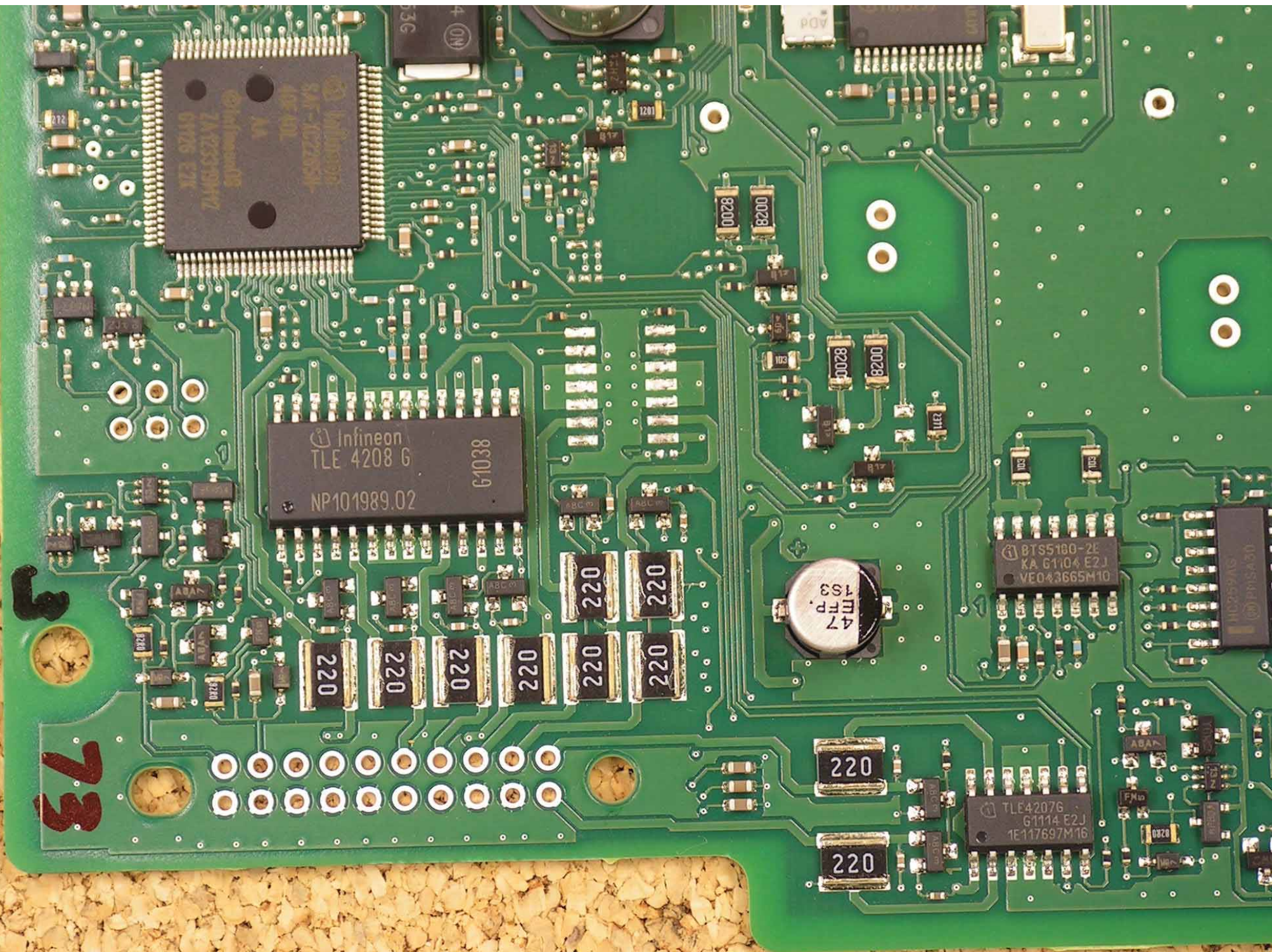
ABC

ABC

ABC

ABC

BTS5100-2C
KA G1104 E2
VE043665M10



Infineon
TLE4208G
NP101989.02
G1038

Infineon
TLE 4208 G
NP101989.02
G1038

47
EFP
1S3

BTS5180-2E
KA G1104 E2J
VE043665M10

TLE4207G
G1114 E2J
1E117697M16

220
220
220
220
220
220
220

220

220

8200
0028

8200
0028

220
220

220
220

220
220

220
220

220
220

220
220

220
220

73

3

2
67

Infineon
SAF-XCZ251
40F40L
ZK72310M12
G126 E2K
MA

Infineon
TLE 4208 G
NP101989.02
G1038

220
220
220
220
220
220
220
220

47
EFP
1S3

BTS5180-2E
KA G1104 E2J
VE043665M10

HC259AG
PMS130

220

220

8200

8200

8200

8200

2211

103

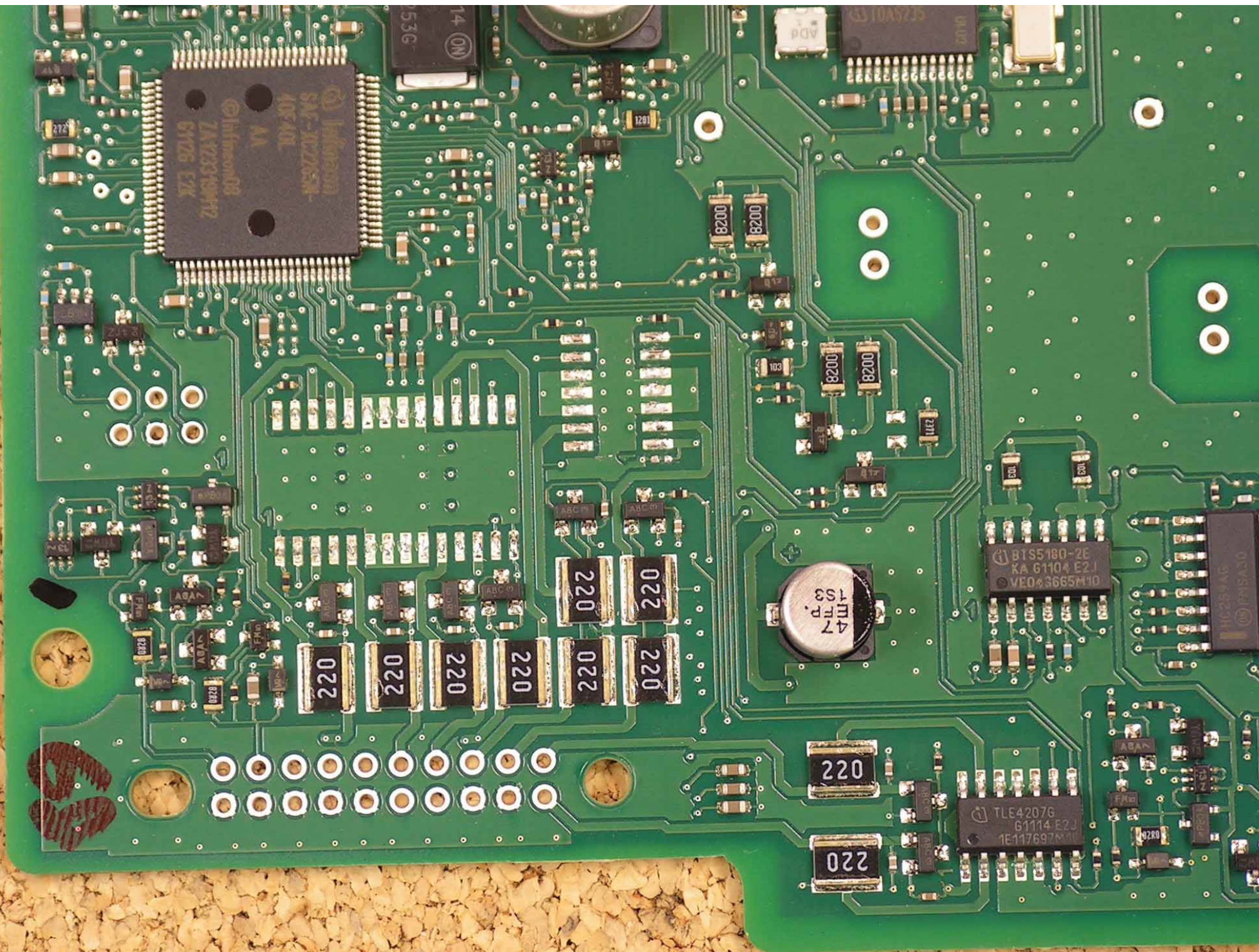
103

220

220

33G
40N

AD4
210K375



Infineon
SA7-10258R
ZA22330MHz
61225 E2K

47
EFP
1S3

B1S5160-2E
KA 61104 E2J
VEO 3665M10

TLE42076
61114 E2J
1E117697M10

220 220 220 220 220 220

220

220



