

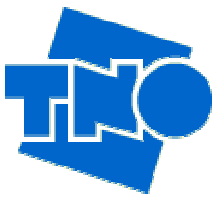
**EXTERIOR PHOTOGRAPHS OF A RECEIVER FOR A
REMOTE KEYLESS ENTRY SYSTEM (RKE), BRAND
TRW, MODEL 41R (13R)**

FCC listed : 90828
Industry Canada : IC3501
VCCI registered : R-1518, C-1598

TNO Electronic Products & Services (EPS) B.V.
P.O. Box 15
9822 ZG Niekerk (NL)
Smidshornerweg 18
9822 TL Niekerk (NL)

Telephone: +31 594 505005
Telefax: +31 594 504804

E-mail: info@tno-eps.com
Web: www.tno-eps.com



Description of EUT: Receiver for a Remote Keyless Entry System
Manufacturer: TRW Automotive
Brand mark: TRW
Model: 41R (13R)

Description of test item

Test item : Receiver for a Remote Keyless Entry System (RKE)
Manufacturer : TRW Automotive
Brand : TRW
Model : 41R (13R)
Serial number(s) : -
Revision : Rev. A
Receipt date : May 25, 2007

Applicant information

Applicant's representative : Mr. M. Koskella
Company : TRW Automotive
Address : 24175 Research Drive
Postal code : MI 48335-2642
City : Farmington Hills
PO-box : -
Postal code : -
City : -
Country : United States of America
Telephone number : +1 248 442 5304
Telefax number : +1 248 478 7241



Description of EUT: Receiver for a Remote Keyless Entry System
Manufacturer: TRW Automotive
Brand mark: TRW
Model: 41R (13R)

Table of contents

1	Photographs of the equipment	4
1.1	Exterior view 1 of receiver 41R (13R)	4
1.2	Exterior view 2 of receiver 41R (13R)	5



Description of EUT: Receiver for a Remote Keyless Entry System
Manufacturer: TRW Automotive
Brand mark: TRW
Model: 41R (13R)

1 Photographs of the equipment.

1.1 Exterior view 1 of receiver 41R (13R)



Photo 1: Exterior view 1



Description of EUT: Receiver for a Remote Keyless Entry System
Manufacturer: TRW Automotive
Brand mark: TRW
Model: 41R (13R)

1.2 Exterior view 2 of receiver 41R (13R)

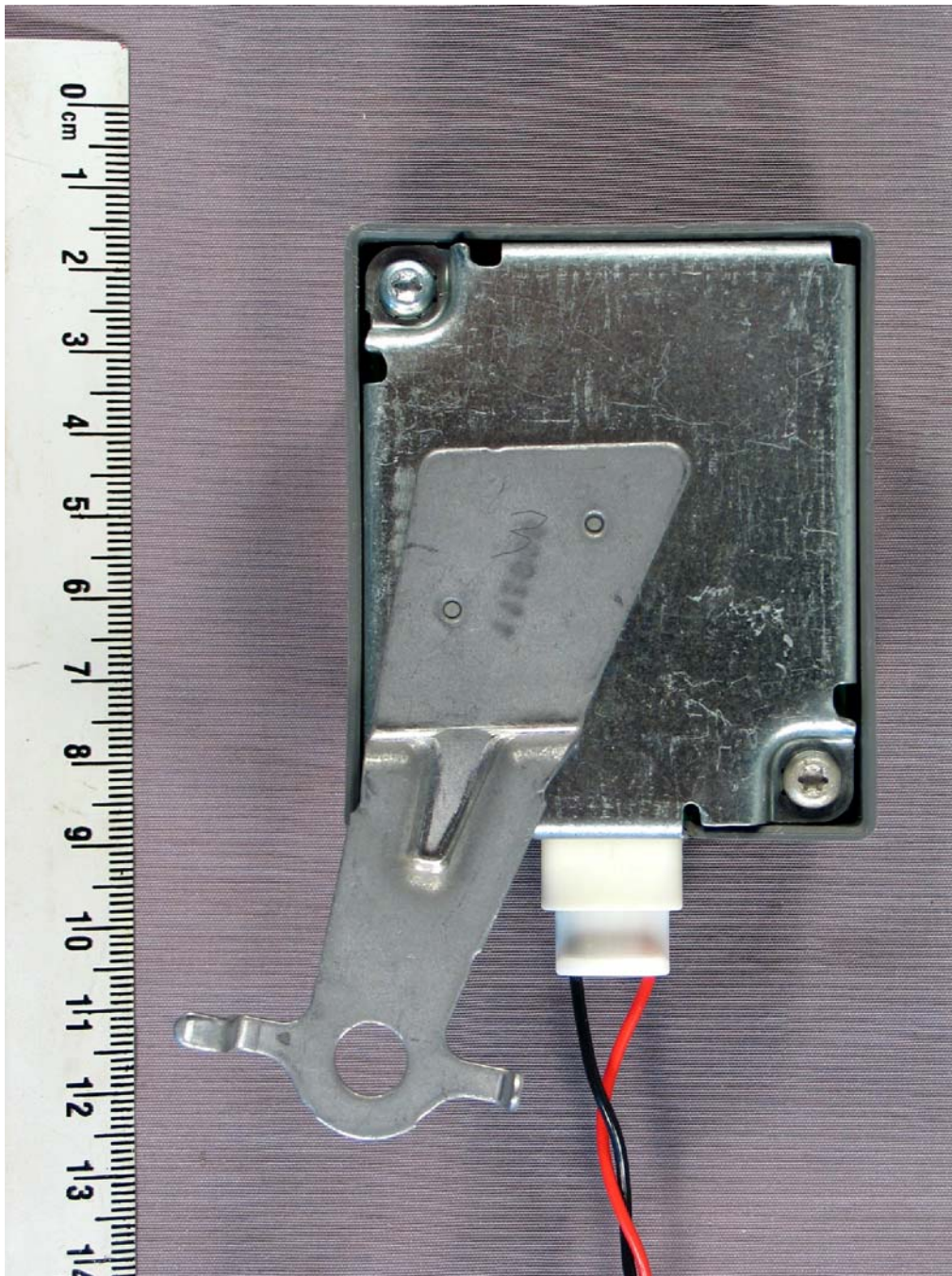


Photo 2: Exterior view 2