



**ANSI 63-4 TEST SETUP PHOTOGRAPHS OF A  
RECEIVER FOR A REMOTE KEYLESS ENTRY  
SYSTEM (RKE), BRAND TRW, MODEL 36R.**

FCC listed : 90828  
Industry Canada : IC3501  
VCCI registered : R-1518, C-1598

**TNO Electronic Products & Services (EPS) B.V.**  
**P.O. Box 15**  
**9822 ZG Niekerk (NL)**  
**Smidshornerweg 18**  
**9822 TL Niekerk (NL)**

Telephone: +31 594 505005  
Telefax: +31 594 504804

E-mail: [info@tno-eps.com](mailto:info@tno-eps.com)  
Web: [www.tno-eps.com](http://www.tno-eps.com)



**Description of EUT:** Receiver for a Remote Keyless Entry System  
**Manufacturer:** TRW Automotive  
**Brand mark:** TRW  
**Model:** 36R

---

**Description of test item**

Test item : Receiver for a Remote Keyless Entry System (RKE)  
Manufacturer : TRW Automotive  
Brand : TRW  
Model : 36R  
Serial number(s) : -  
Revision : Rev. A  
Receipt date : April 27, 2007

**Applicant information**

Applicant's representative : Mr. M. Koskella  
Company : TRW Automotive  
Address : 24175 Research Drive  
Postal code : MI 48335-2642  
City : Farmington Hills  
PO-box : -  
Postal code : -  
City : -  
Country : United States of America  
Telephone number : +1 248 442 5304  
Telefax number : +1 248 478 7241



**Description of EUT:** Receiver for a Remote Keyless Entry System  
**Manufacturer:** TRW Automotive  
**Brand mark:** TRW  
**Model:** 36R

---

## **Table of contents**

1	Test setup photographs of radiated emission measurements .....	4
1.1	Receiver 36R on wooden table on OATS.....	4
1.2	Receiver 36R front view.....	5
1.3	Receiver 36R rear view .....	6

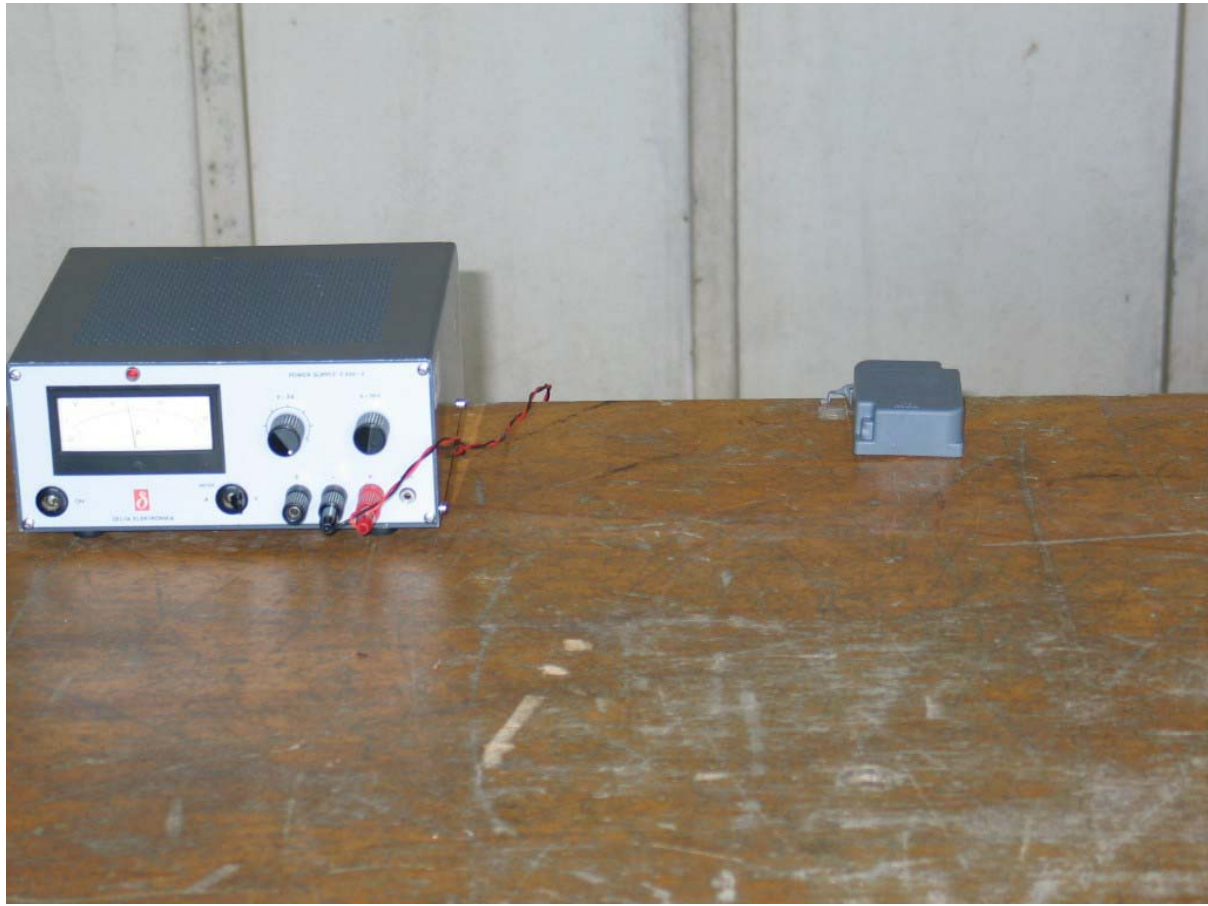
## 1 Test setup photographs of radiated emission measurements.

### 1.1 Receiver 36R on wooden table on OATS.



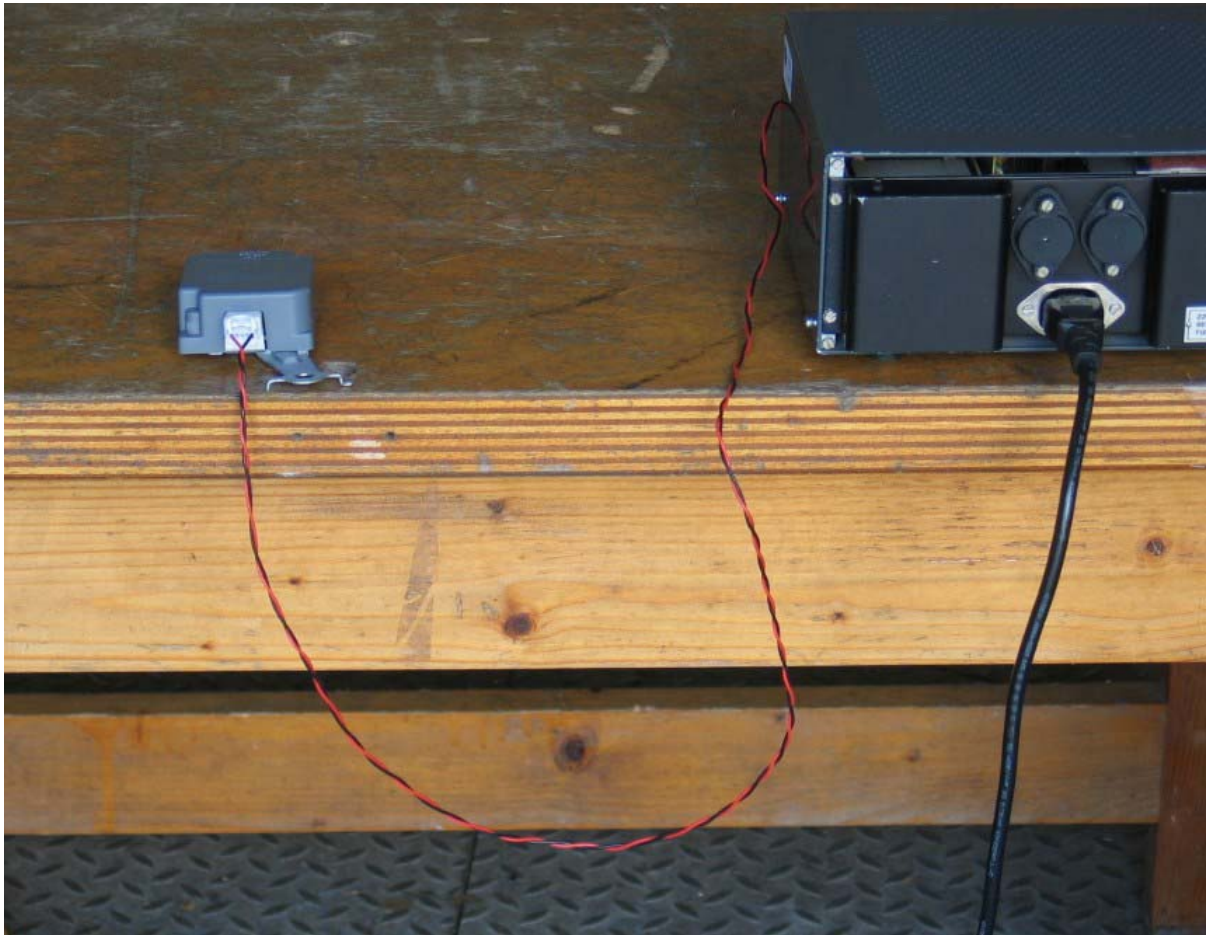
**Photo 1: Radiated emission measurement set up**

## 1.2 Receiver 36R front view



**Photo 2: Radiated emission measurement set up; front view.**

### 1.3 Receiver 36R rear view



**Photo3: Radiated emission measurement set up; rear view.**