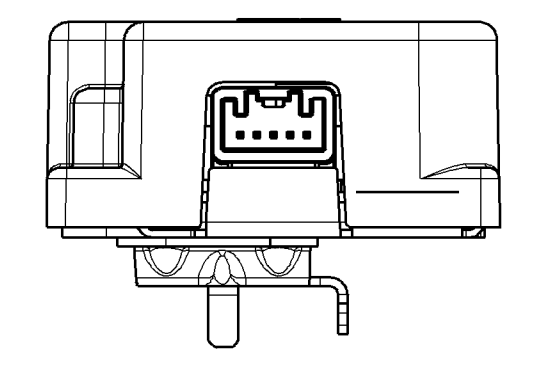
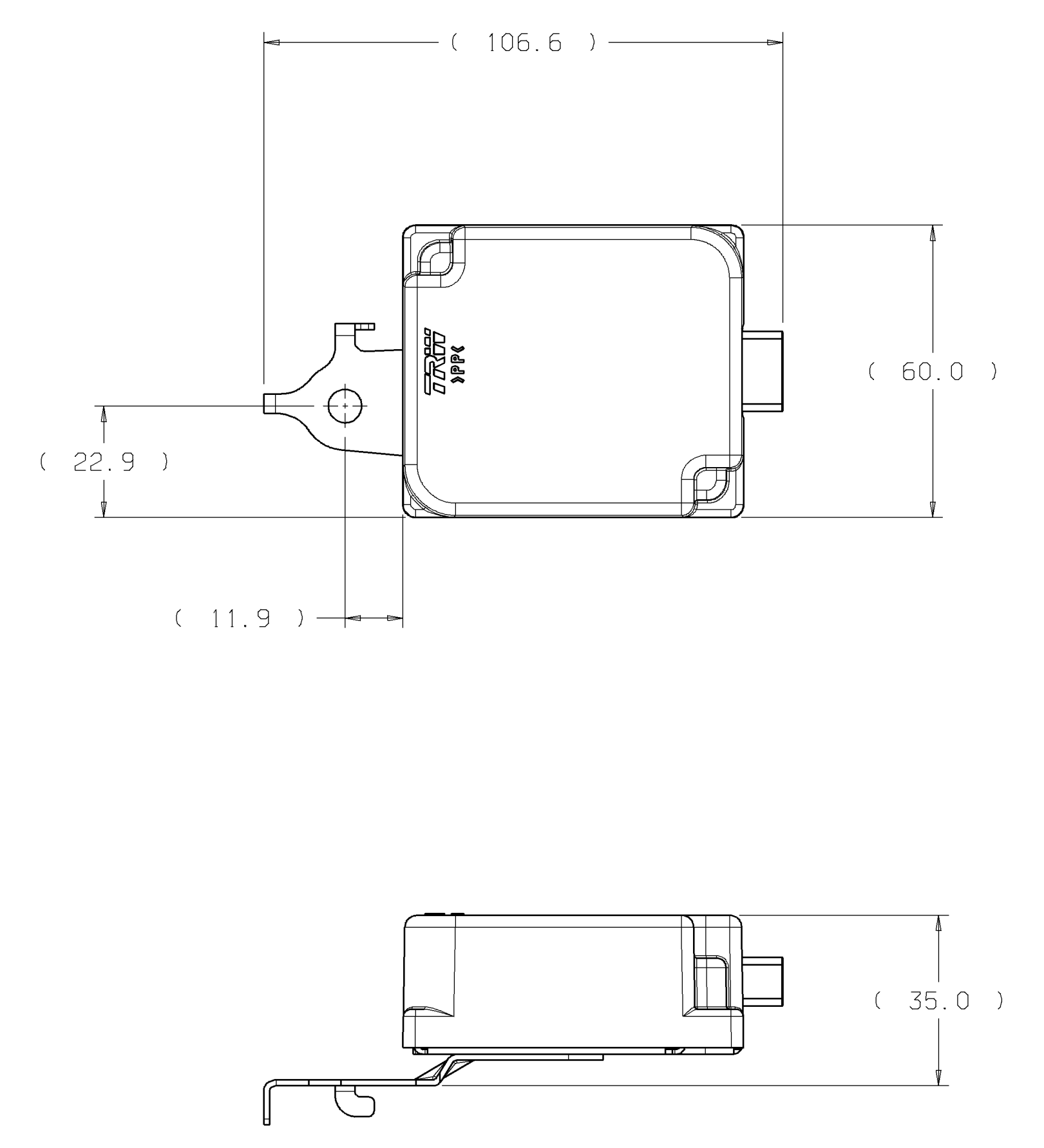
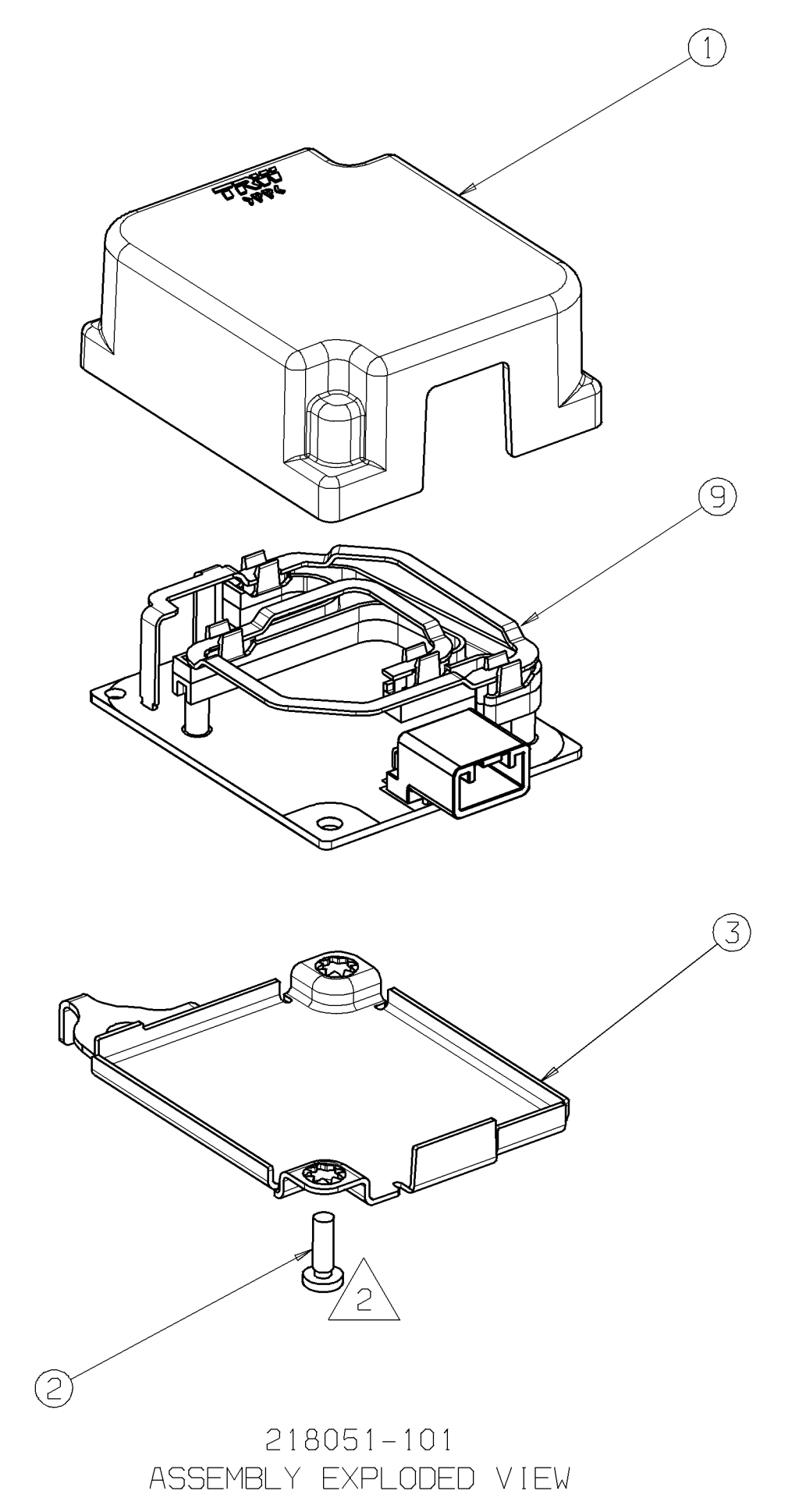
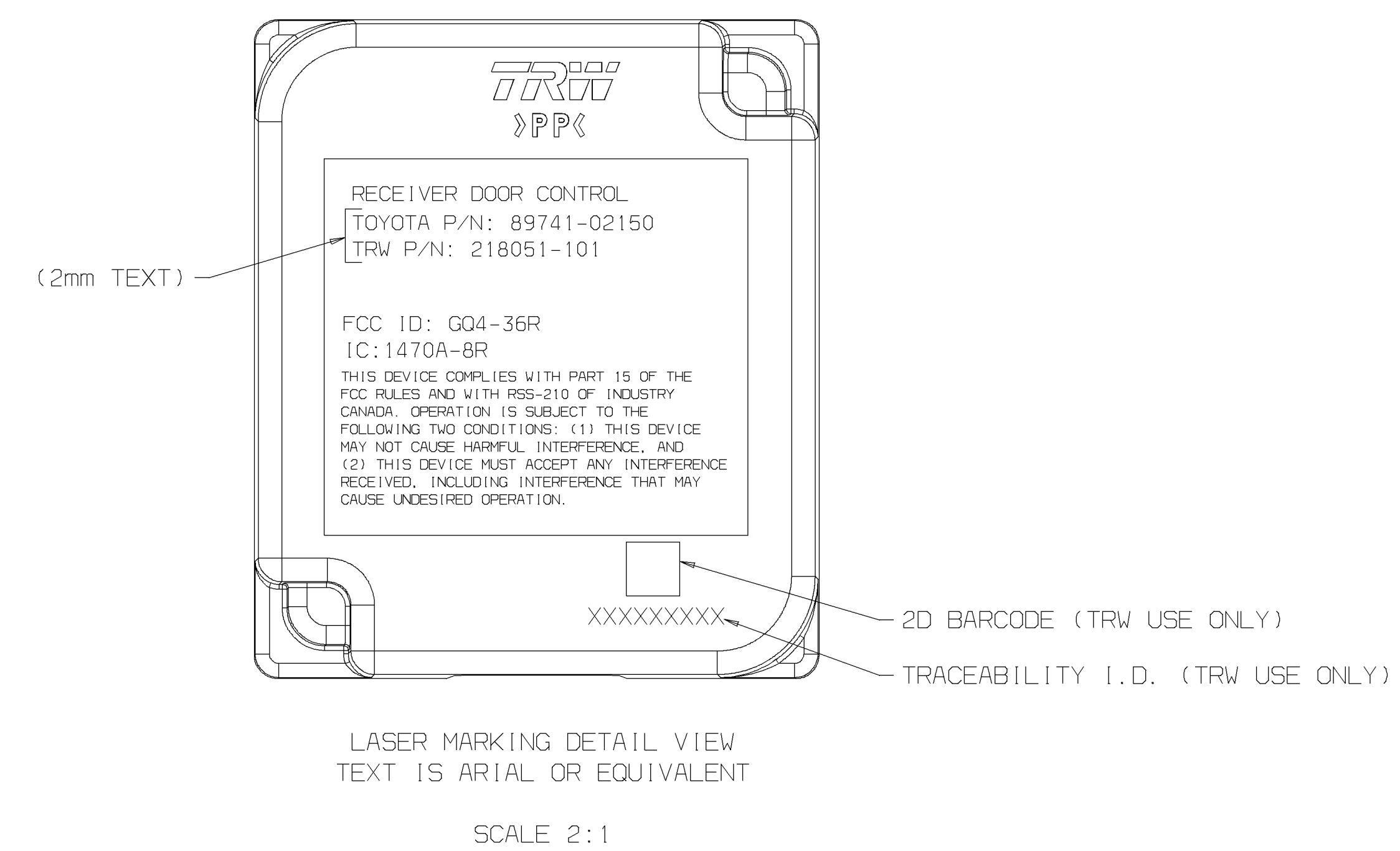


© 2004 TRW Automotive  
 THIS DRAWING AND THE DESIGNS AND DATA DEPICTED IN IT ARE THE CONFIDENTIAL PROPERTY OF TRW AUTOMOTIVE INC. AND ITS SUBSIDIARY COMPANIES, WHO RESERVE ALL RIGHTS THEREIN, BY ACCEPTING THIS DRAWING, THE RECIPIENT AGREES NOT TO COPY, USE, MANUFACTURE, OR COMMUNICATE TO OTHERS, WHOLLY OR IN PART, EITHER THIS DRAWING OR THE DESIGNS OR DATA DEPICTED IN IT EXCEPT AS EXPRESSLY AUTHORIZED IN WRITING BY TRW AUTOMOTIVE INC. OR THE TRW SUBSIDIARY COMPANY DELIVERING THIS DRAWING.

NOTES:  
 1. SPECIAL CHARACTERISTICS

TRW SYMBOL	DEFINITION	REQUIREMENT
	CRITICAL: ANY FEATURE (DIMENSION, TOLERANCE, FINISH OR MATERIAL) THAT IF NON-CONFORMING, MISSING OR DEGRADED, COULD CAUSE FAILURE, MALFUNCTION OR NON-COMPLIANCE TO GOVERNMENT REGULATIONS.	CHARACTERISTIC MUST BE CONTROLLED AND NOTED ON THE FMEA AND PRE-LAUNCH AND PRODUCTION CONTROL PLANS.
	SIGNIFICANT: ANY FEATURE (DIMENSION, TOLERANCE, FINISH OR MATERIAL) THAT IF NON-CONFORMING, MISSING OR DEGRADED, COULD AFFECT FIT FORM, FUNCTION, APPEARANCE OR DURABILITY AND LIKELY RESULT IN CUSTOMER DISSATISFACTION.	CONTROL METHODS TO BE DETERMINED BETWEEN THE SUPPLIER AND THE TRW SUPPLIER QUALITY ENGINEER AND MAY INCLUDE SPC, MISTAKE-PROOFING, 100% AUTOMATIC INSPECTION/TEST, ETC.
	PROTOTYPE: ANY FEATURE (DIMENSION, TOLERANCE, FINISH OR MATERIAL) NOTED FOR PROTOTYPE PART DEVELOPMENT OR VERIFICATION.	IF THE CHARACTERISTIC IS CONTROLLED USING SPC (STATISTICAL PROCESS CONTROL), Ppk MUST MEET OR EXCEED 1.67 (FOR INITIAL OR UNSTABLE PROCESSES) AND Cpk MUST MEET OR EXCEED 1.33 (FOR ONGOING PRODUCTION OF STABLE PROCESSES). *REFERENCE AIAG STATISTICAL PROCESS CONTROL MANUAL UNLESS OTHERWISE NOTED ON THE PURCHASE ORDER, A MINIMUM OF THREE PIECES MUST BE CHECKED FOR CONFORMANCE (APPLIES TO ALL FEATURES DENOTED WITH C, S AND P SYMBOLS).

ASSEMBLY SCREWS (ITEMS #2) SHALL BE TORQUED TO 11.0 ±2.0 IN. LBS.



INDEX ZONE	DESCRIPTION	E. R. D.	DATE	NAME	CHK	ENG
D	REVISED PER CPR	27771	02/07/07	AP		
C	REVISED PER CPR	27482	12/19/06	MG		
B	REVISED PER CPR	26815	09/18/06	MG		
A	PRODUCTION RELEASE PER CPR	26415	08/07/06	AP		

ITEM	MATERIAL/FINISH/COATING	MATERIAL SYMBOL	MATERIAL WEIGHT (GRAMS)	SURFACE AREA (cm <sup>2</sup> )

CD	SYSTEM	DATE	NAME	SIGN	REF. NO.
RELEASE	DEPT	07/26/06	A. PYTEL		FIRST USED
DESIGNER		02/07/07	A. PYTEL		CAR LINE
REV DES					
CHECKER					
ENGR		02/07/07	M. KOSKELLA		FORMAT
APVD		02/07/07	R. JACK		A0
APVD					TRW Automotive Farmington Hills, MI 48335

QTY	PART NUMBER	NOMENCLATURE OR DESCRIPTION	MATERIAL	ITEM
1	218022-104	ASSY;PCB;TOYO;150L RKE RCVR	-	9
1	218022-103	ASSY;PCB;TOYO;150L RKE RCVR SW2-4	-	8
1	218022-102	ASSY;PCB;TOYO;150L RKE RCVR	-	7
REF	216174	SPEC;CUST;TOYO;150L RKE RCVR	-	6
REF	217640	SPEC;DFMEA;TOYO;150L RKE RCVR	-	5
1	218022-101	ASSY;PCB;TOYO;150L RKE RCVR	-	4
1	218045-101	ASSY;BRKT;TOYO;150L RKE RCVR	-	3
2	217053-1	SCW;TF;PN;TX;6-19X7/16;STL	-	2
1	218043-1	HOUSING;TOYO;RKE RCVR	-	1

DO NOT SCALE PRINT	SCALE:	DRAWING NO./IDENT NO.	INDEX
	1:1	218051	D
MATERIAL-NO./SMP-NO.:		SHEET NUMBER	PART QTY
DENSITY(g/cm <sup>3</sup> ):	VOLUME(cm <sup>3</sup> ):	1 OF 1	