



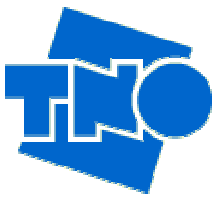
**INTERIOR PHOTOGRAPHS OF A RECEIVER FOR A  
REMOTE KEYLESS ENTRY SYSTEM (RKE), BRAND  
TRW, MODEL 36R**

FCC listed : 90828  
Industry Canada : IC3501  
VCCI registered : R-1518, C-1598

**TNO Electronic Products & Services (EPS) B.V.**  
**P.O. Box 15**  
**9822 ZG Niekerk (NL)**  
**Smidshornerweg 18**  
**9822 TL Niekerk (NL)**

Telephone: +31 594 505005  
Telefax: +31 594 504804

E-mail: [info@tno-eps.com](mailto:info@tno-eps.com)  
Web: [www.tno-eps.com](http://www.tno-eps.com)



**Description of EUT:** Receiver for a Remote Keyless Entry System  
**Manufacturer:** TRW Automotive  
**Brand mark:** TRW  
**Model:** 36R

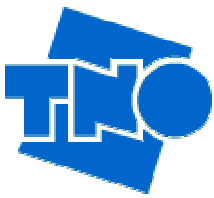
---

**Description of test item**

Test item : Receiver for a Remote Keyless Entry System (RKE)  
Manufacturer : TRW Automotive  
Brand : TRW  
Model : 36R  
Serial number(s) : -  
Revision : Rev. A  
Receipt date : April 27, 2007

**Applicant information**

Applicant's representative : Mr. M. Koskella  
Company : TRW Automotive  
Address : 24175 Research Drive  
Postal code : MI 48335-2642  
City : Farmington Hills  
PO-box : -  
Postal code : -  
City : -  
Country : United States of America  
Telephone number : +1 248 442 5304  
Telefax number : +1 248 478 7241



Description of EUT: Receiver for a Remote Keyless Entry System  
Manufacturer: TRW Automotive  
Brand mark: TRW  
Model: 36R

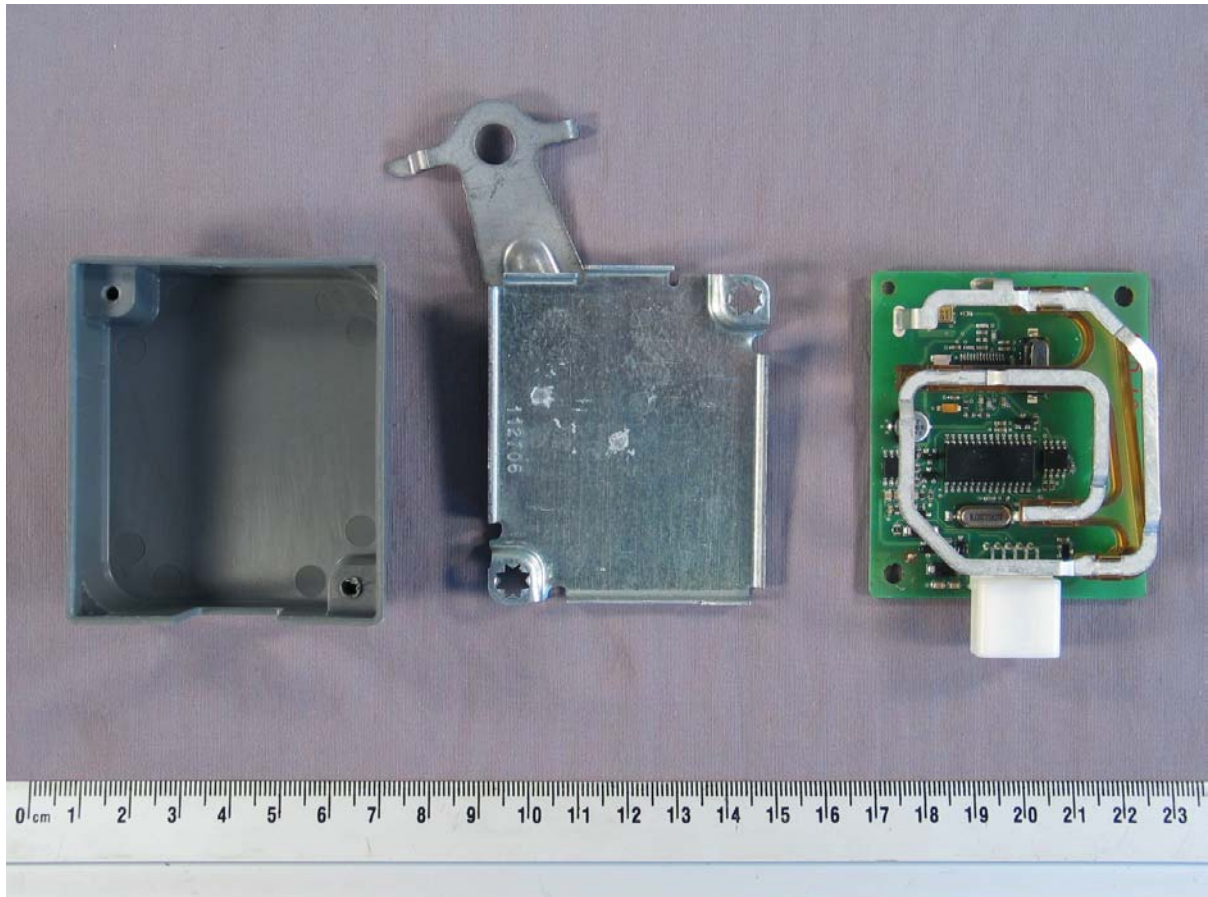
---

## **Table of contents**

1	Photographs of the equipment .....	4
1.1	Interior view 1 of receiver 36R.....	4
1.2	PCB side 1 of receiver 36R.....	5
1.3	PCB side 2 of receiver 36R .....	6

## 1 Photographs of the equipment.

### 1.1 Interior view 1 of receiver 36R



**Photo 1: Interior view 1**

## 1.2 PCB side 1 of receiver 36R

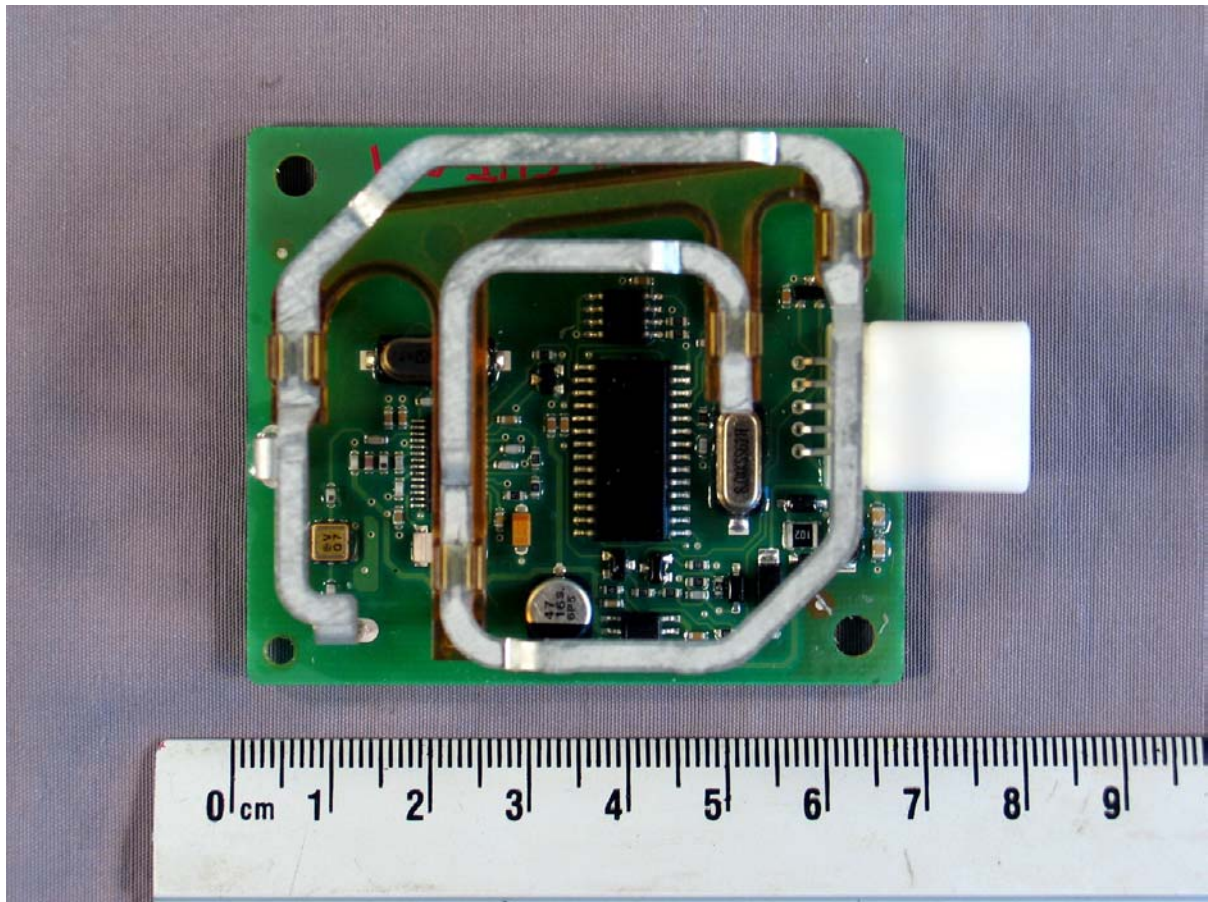


Photo 2: PCB side 1

### 1.3 PCB side 2 of receiver 36R

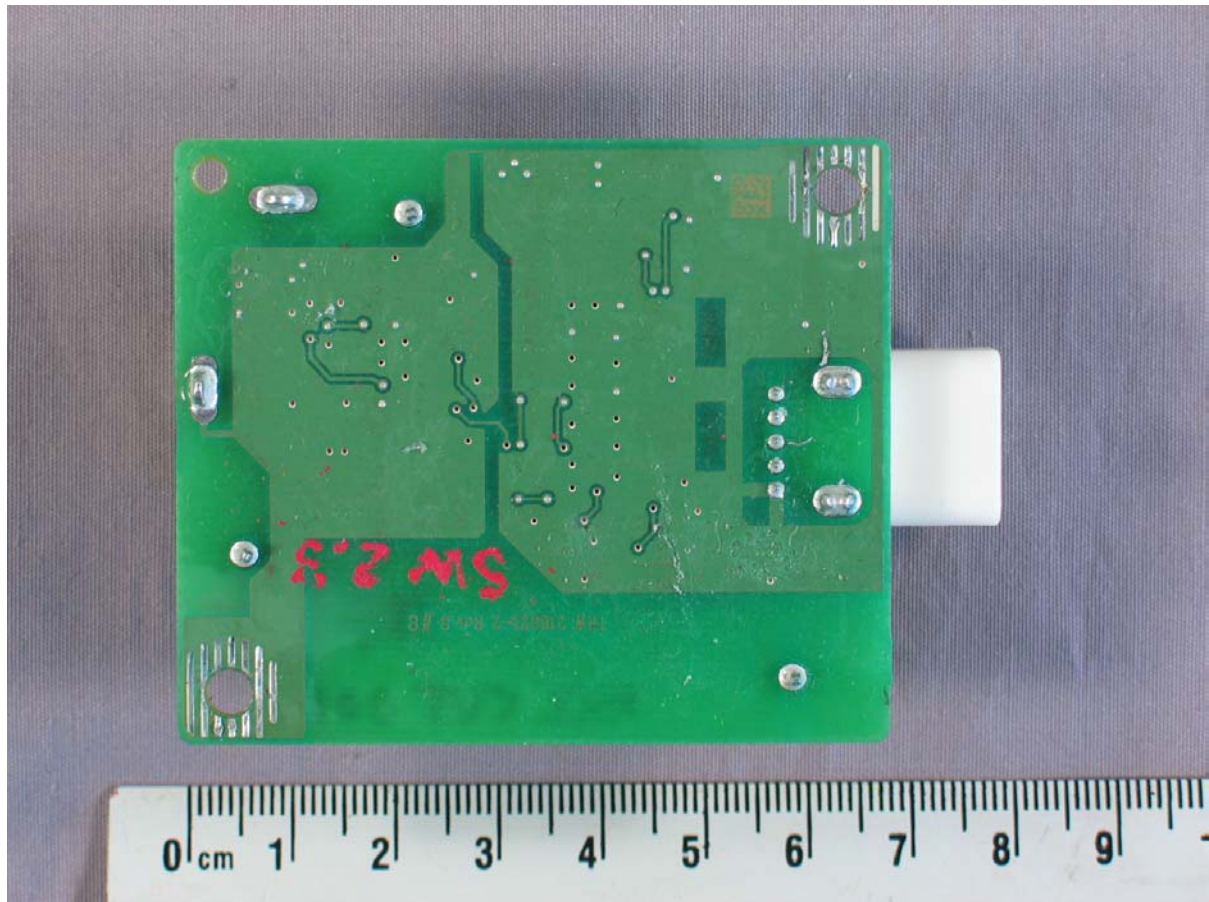


Photo 2: PCB side 2