



**PHOTOGRAPHS OF THE INTERIOR OF A
TRANSMITTER FOR A REMOTE KEYLESS ENTRY
SYSTEM (RKE), BRAND TRW, MODEL 29T.**

FCC listed : 90828
Industry Canada : 2932G-1
VCCI Registered : R-1518, C-1598
R&TTE, LVD, EMC Notified Body : 1856

TÜV Rheinland EPS B.V.
P.O. Box 15
9822 ZG Niekerk (NL)
Smidshornerweg 18
9822 TL Niekerk (NL)

Telephone: +31 594 505005
Telefax: +31 594 504804

Internet: www.tuv-eps.com
E-mail: info@tuv-eps.com



Description of test item

Test item : Transmitter for a Remote Keyless Entry System (RKE)
Manufacturer : TRW Automotive
Brand : TRW
Model(s) : 29T
Serial number(s) : --
Revision : n.a.
Receipt date : June 02 , 2010

Applicant information

Applicant's representative : Mr. R. Tiné
Company : RFC Technology & Norms
Address : 5, Rue du Chant des Oiseaux
Postal code : 78360
City : Montesson
Country : France
Telephone number : +33 1 30157822
Telefax number : +33 1 30157823



Table of contents

1.1	INTERNAL VIEW 1, HOUSING OPENED UP	4
1.2	INTERNAL VIEW 2, HOUSING OPENED UP AND DISASSEMBELD	5
1.3	INNER ASSEMBLY	6
1.3.1	<i>Inner assembly, button side</i>	6
1.3.2	<i>Inner assembly, battery side</i>	6
1.3.3	<i>Inner assembly, battery side, battery removed</i>	7
1.4	INNER ASSEMBLY, PCB REMOVED FROM HOUSING	8
1.5	INNER ASSEMBLY, PCB VIEW1	9



1.1 Internal view 1, housing opened up





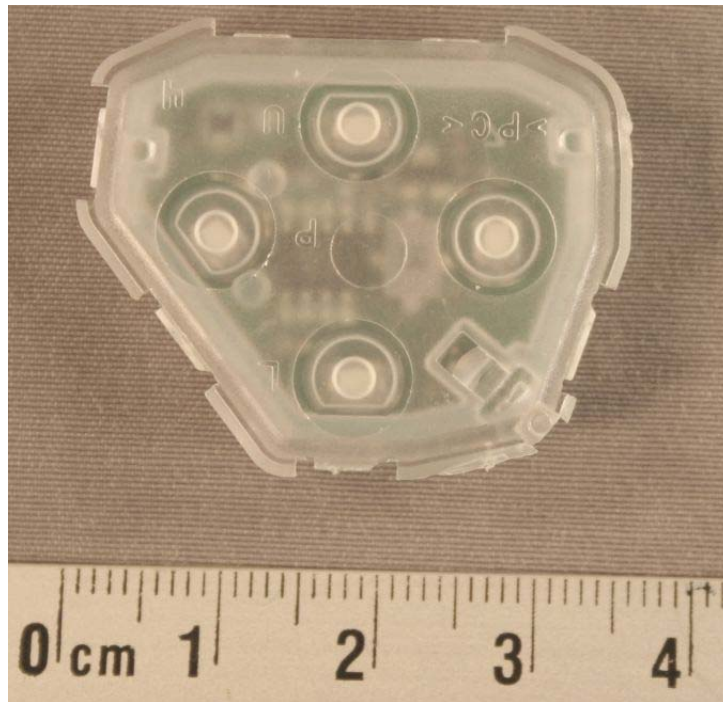
1.2 Internal view 2, housing opened up and disassembled



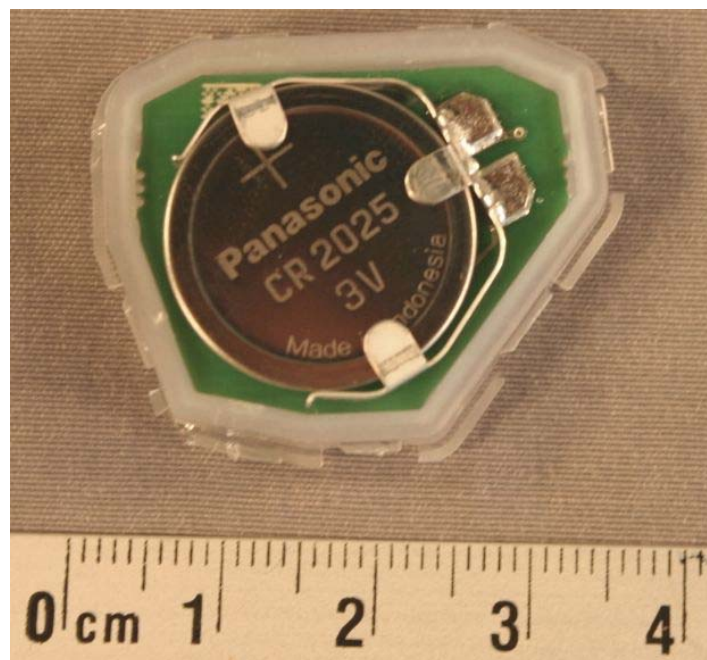


1.3 Inner assembly

1.3.1 Inner assembly, button side

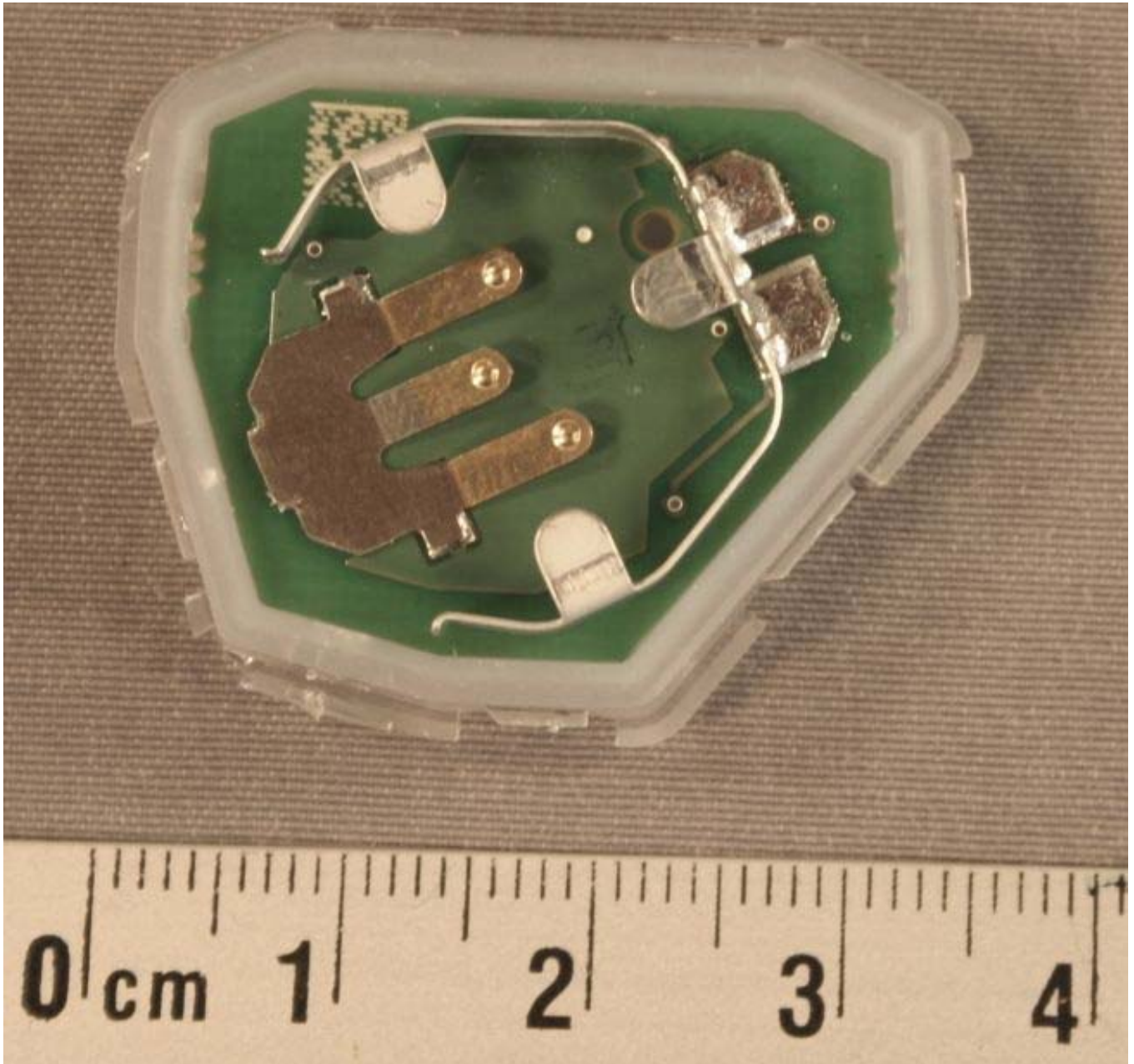


1.3.2 Inner assembly, battery side



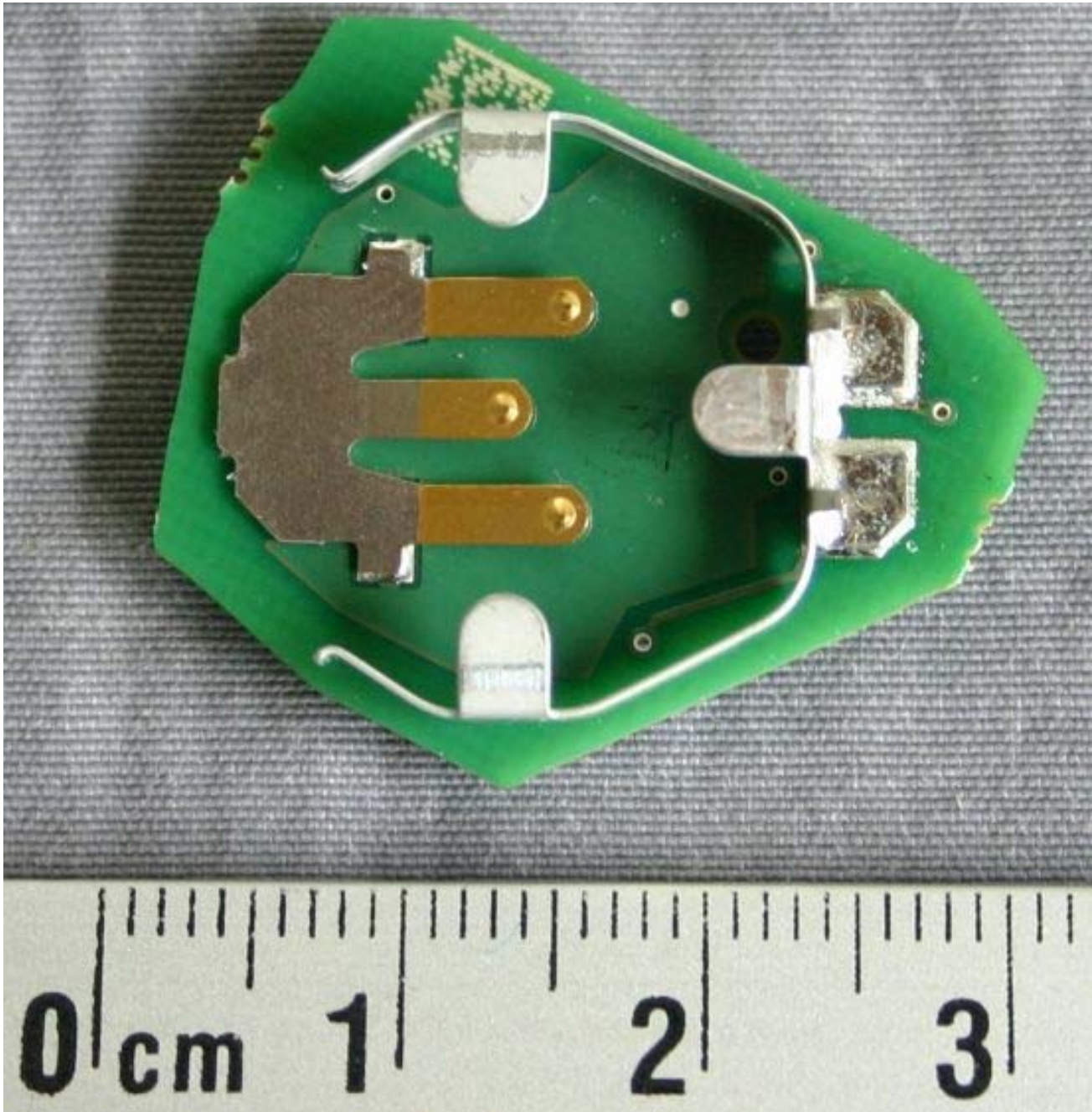


1.3.3 Inner assembly, battery side, battery removed





1.4 Inner assembly, PCB removed from housing





1.5 Inner assembly, PCB view1

