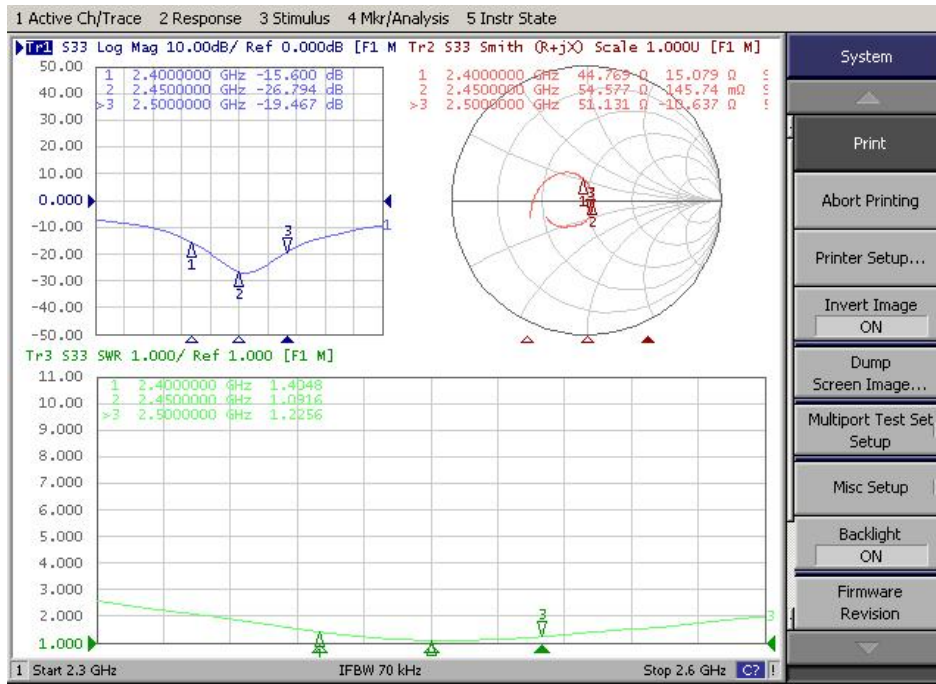


# Antenna size diagram

电 器 性 能 指 标		Electrical Specifications	
频率范围		2400-2500MHZ	
电压驻波比	≤1.8	VSWR	≤1.8
增益	3 dBi	GAIN	3 dBi
辐射方式	全向	Radiation	OMNI
极化方式	线极化	Polarizatin	LINEAR
输入阻抗	50 Ω	Input Impedance	50 Ω
机 械 性 能 指 标		Mechanical Specifications	
接口形式	IPEX-1	Input connector	IPEX-1
天线材质	PCB	Antenna materia	PCB
工作温度	-30℃~+80℃	Working Temperature	-30℃~+80℃
工作湿度	40~85%	Working Humidity	40~85%

# Antenna standing wave pattern antenna efficiency

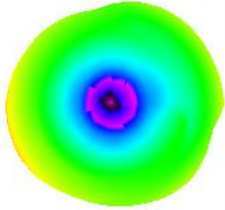


## Antenna efficiency

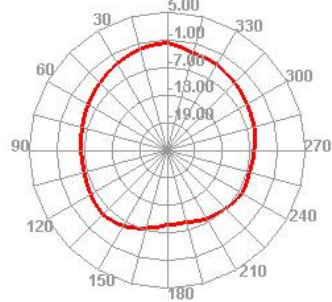
Freq (MHz)	Effi (%)	Effi (dB)	Gain (dBi)	Gain (dBd)
2400	54.56	-3.99	2.18	0.03
2405	53.91	-4.06	2.21	0.06
2410	56.01	-3.83	2.5	0.35
2415	56.9	-3.74	2.68	0.53
2420	54.47	-4	2.44	0.29
2425	53.2	-4.14	2.36	0.21
2430	51.62	-4.32	2.26	0.11
2435	49.17	-4.62	2.03	-0.12
2440	52.01	-4.28	2.46	0.31
2445	53.73	-4.08	2.74	0.59
2450	53.49	-4.31	3.00	0.66
2455	54.28	-3.6	2.19	0.04
2460	55.83	-3.45	2.32	0.17
2465	55.82	-3.45	2.39	0.24
2470	57.68	-3.28	2.56	0.41
2475	57.36	-3.31	2.49	0.34
2480	59.96	-3.07	2.71	0.56
2485	55.79	-2.53	3.23	1.08
2490	59.18	-2.28	3.41	1.26
2495	63.34	-1.98	3.63	1.48
2500	65.9	-1.81	3.75	1.6

# Antenna pattern

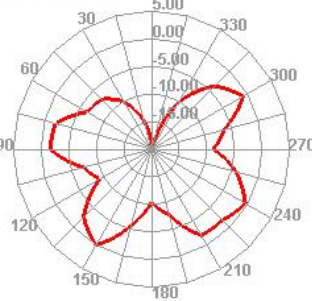
2400.000MHz



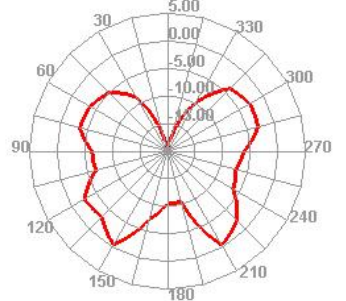
2400.000MHz H



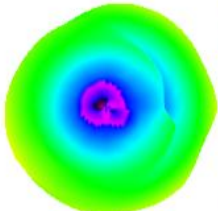
2400.000MHz E1



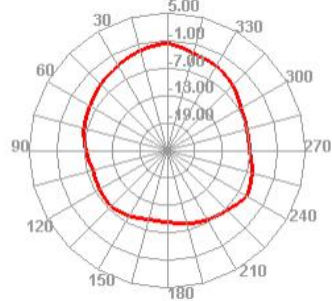
2400.000MHz E2



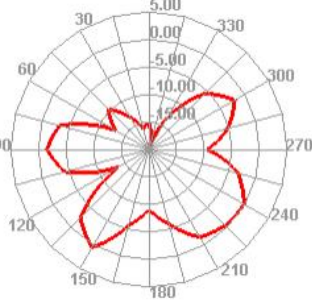
2450.000MHz



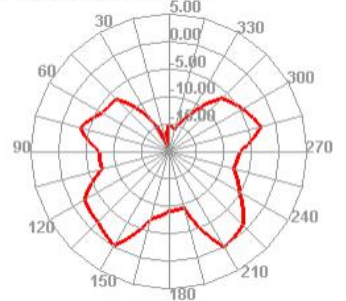
2450.000MHz H



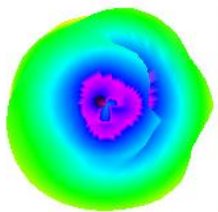
2450.000MHz E1



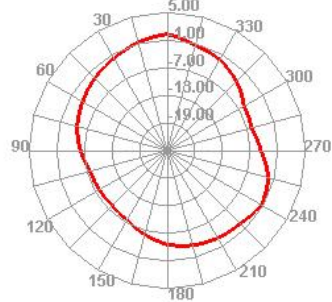
2450.000MHz E2



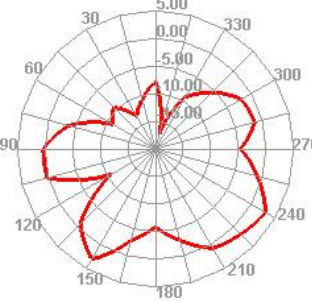
2500.000MHz



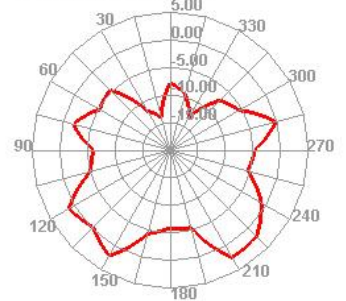
2500.000MHz H



2500.000MHz E1



2500.000MHz E2



# Antenna size diagram

