

Quick Start

Welcome to Ricochet! You are about to experience true freedom for the first time. Ricochet sets you free from the office with mobile access to e-mail, the Internet and company networks from anywhere in our coverage areas—without being tied to a phone jack. This means you can work when, where, and how you want to with the information you need, just a few clicks away.

Imagine responding to e-mail from the back of a taxi, or downloading a presentation while sitting in a client's conference room. Or staying online while waiting at the doctor's office. Or doing business from a coffee shop. You get the picture.

We think you'll agree that Ricochet changes everything.



FCC Compliance

This device complies with Part 15 of the FCC Rules. Operation is subject to the following two conditions: (1) this device may not cause harmful interference, and (2) this device must accept any interference received, including interference that may cause unwanted operation.

This equipment complies with the limits for a Class B digital device, pursuant to Part 15 of the FCC Rules. These limits are designed to provide reasonable protection against radio frequency energy and, if not installed and used in accordance with the instructions, may cause harmful interference to radio communications. However, there is no guarantee that interference will not occur in a particular installation. If this equipment does cause harmful interference to radio or television reception, which can be determined by turning the equipment off and on, the user is encouraged to try to correct the interference by one or more of the following safety measures:

- *Reorient or relocate the receiving antenna.*
- *Increase the separation between the equipment and receiver.*
- *Consult the dealer or an experienced radio modem technician for help.*

Caution:

This device is required to comply with FCC RF exposure requirements for mobile transmitting devices. A separation distance of 20cm (8 inches) or more must be maintained between the antenna and all persons during device operations to satisfy RF exposure compliance. FCC ID: GNW22131

Device covered by the following patents:

*4,939,726; 5,903,566; 5,115,433; 5,130,987; 5,400,338; 5,453,977; 5,471,469;
5,479,400; 5,488,608; 5,515,369; 5,570,084; 5,664,194*

Installing the Ricochet Software

Exit other programs before starting the Ricochet installer.

Make sure your Ricochet modem is **not** connected to your computer before you begin the software installation.

1. Insert the Ricochet installation CD into your computer.
2. Double-click the **My Computer** icon.
3. Locate the icon for your CD-ROM. Right-click this icon and select **Open**.
4. Double-click the **R2 Setup** icon to begin the installation process.

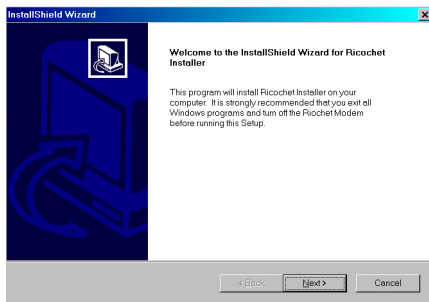


Fig. 1: The Ricochet Installer Welcome screen

5. Click **Next** to review the Ricochet software license agreement.

Installing the Ricochet Software

- Read the license agreement. If you agree to the terms, click the **Yes** button.
 - Click **No** to refuse the terms of the agreement. **R2Setup** will exit, and no installation will take place.
6. Connect the modem to your PC. Turn the modem on.
- Plug the modem cable's connector into the modem.
 - Plug the free end of the cable into an available USB or serial port in the computer.

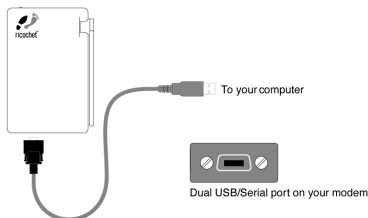


Fig. 2: Ricochet modem and USB cable

Installing the Ricochet Software

7. Turn on your Ricochet modem.

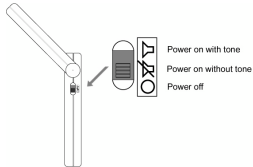


Fig. 3: Power switch detail

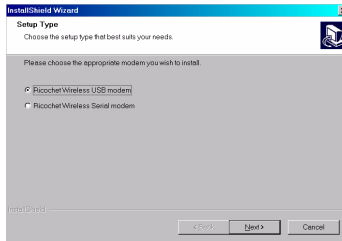


Fig. 4: Modem setup cable type

- Select **Ricochet Wireless USB** modem to use a USB cable.
 - Select **Ricochet Wireless Serial** modem to use a serial cable.
8. Click **Next** to install the Ricochet connection software. Installation should take one to two minutes.
 9. To use your Ricochet modem, you must restart your computer.

Installing the Ricochet Software

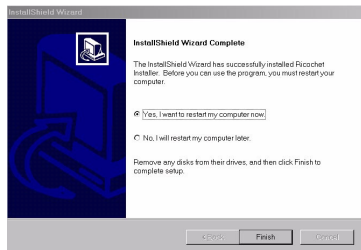


Fig. 5: Final Setup screen

On the final setup screen:

- Select **Yes** to restart your computer now.
- Select **No** to restart your computer later.

Click **Finish** to complete the installation.

Charging your Modem Battery

To fully charge your Ricochet modem battery:

1. Connect the AC adapter to the modem.
2. Plug the adapter into a 110v household power outlet.

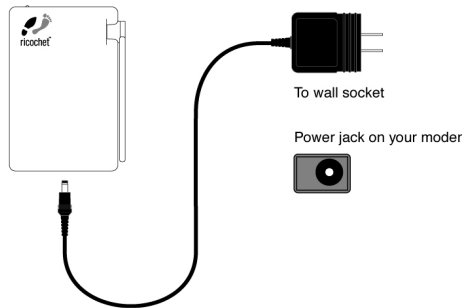


Fig. 6: Your Ricochet modem and power adapter

- The modem battery will charge during use.
- When the modem is switched off, the required charging time is about two hours. During use, charging time will be longer.

Registering on the Ricochet Network

When your modem is turned on, it automatically seeks out the Ricochet network. Once the network is found, the modem signals with tones and a green light.

To register on the network:

1. Extend the antenna on your modem.
2. Turn on the modem. Place the switch in **Power On with tone** position. You can also use **Power on without tone** mode.
3. Listen for a single beep, and wait for the modem's red light to turn on, indicating that the modem is receiving power.
4. Wait a moment for the modem's green light to blink, indicating that your modem has registered on the network.

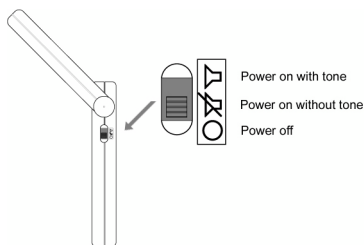


Fig. 7: Power switch detail

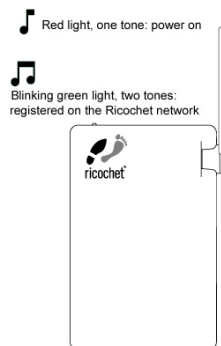


Fig. 8: Tone key

Connecting to the Internet

1. Connect your modem, turn it on, and verify that it is registered on the Ricochet network. (See page 8)
2. Locate the **Connect to Ricochet** icon in your Dial-up networking folder. Double-click the icon.
3. Enter your name and Ricochet password in the **Connect To** dialog box.
4. Click the **Connect** button in the **Connect To** dialog box.



Fig. 9: **Connect To** dialog box

You will hear a short series of ascending tones, and the blinking green light on your modem will change to orange as your modem connects to the Internet.

Once the modem is connected, you'll be able to use your Internet applications, like web browsers and e-mail, via the Ricochet wireless network.

- To end your Ricochet session, click the **Disconnect** button in the **Connect To** dialog box, wait for the descending tones, and turn your modem off.



ricochet™

Metricom, Inc.