

## Installing your Ricochet Software/Drivers

Windows 98 should detect the device and ask for a device driver. Direct the installer to your Win98\metusb folder on this CD. Windows may ask for the Windows98 CD to be inserted or located for certain Windows-supplied drivers. Point the installer to Win98 for all related requests.

Follow the on-screen instructions.

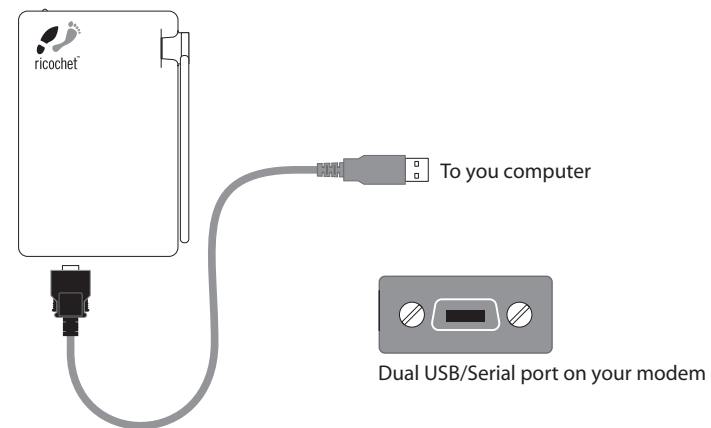
Add a dialup networking entry in the usual way, using the newly installed USB modem.

NOTE: Some PCs have issues and exhibit conflict between infrared / virtual devices and the USB modem. Try disabling the virtual drivers in control panel→system→Device manager→Ports (com & lpt).

## Hardware Installation

(You will find that the battery is already plugged into the modem.)

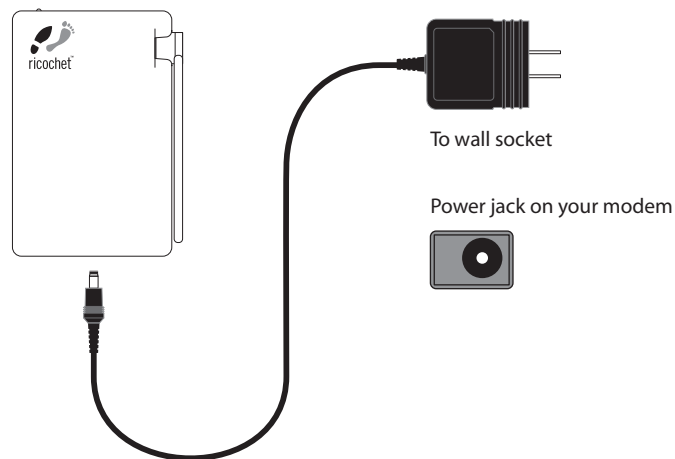
- 1 Plug the modem cable's connector into the modem.
- 2 Plug the other end of the cable into an available USB port in the computer.



Note: USB port locations may differ on your particular computer.

## Charging the battery

- 1 You can charge the battery while the modem is in use.
- 2 To charge the battery, connect the AC adapter to the modem.
- 3 Plug the adapter into any household power outlet.

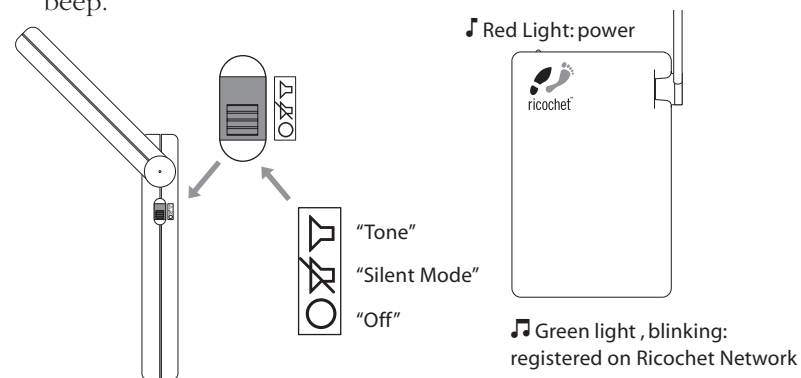


The battery will continue to charge, even if you are using the modem. When the modem is not in use, the average charge time is 2 hours. During use, the full charge time is longer.

4

## Registering on the Ricochet Network

- 1 Turn on the modem. You can switch to “silent” mode or “tone” mode.
- 2 Listen for a single beep, and wait for the modem’s red light to turn on, indicating that the modem has powered on.
- 3 Wait for the modem’s green light to blink, indicating that your modem has registered on the network. You will hear a two-tone beep.



Of course, if your modem is operating in silent mode, you will not hear the tones.

5

## FCC Compliance - DRAFT

*This device complies with Part 15 of the FCC Rules. Operation is subject to the following two conditions: (1) this device may not cause harmful interference, and (2) this device must accept any interference received, including interference that may cause unwanted operation.*

*This equipment complies with the limits for a Class B digital device, pursuant to Part 15 of the FCC Rules. These limits are designed to provide reasonable protection against radio frequency energy and, if not installed and used in accordance with the instructions, may cause harmful interference to radio communications. However, there is no guarantee that interference will not occur in a particular installation. If this equipment does cause harmful interference to radio or television reception, which can be determined by turning the equipment off and on, the user is encouraged to try to correct the interference by one or more of the following safety measures:*

- Reorient or relocate the receiving antenna.
- Increase the separation between the equipment and receiver.
- Consult the dealer or an experienced radio modem technician for help.

*This device is required to comply with FCC RF exposure requirements for mobile transmitting devices. A separation distance of 12cm (5 inches) or more must be maintained between the antenna and all persons during device operations to satisfy RF exposure compliance. FCC ID: GNW22131*

### Patents:

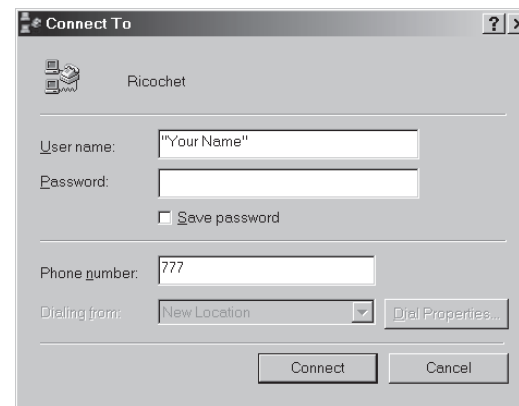
4,939,726, 5,903,566, 5,115,433, 5,130,987, 5,400,338, 5,453,977, 5,471,469, 5,479,400, 5,488,608, 5,515,369, 5,570,084, 5,664,194

2

## Starting Your Ricochet Session

(Your modem should already be on and blinking green.)

- 1 You will be prompted to connect to the Ricochet wireless “777” Internet access. Click **Connect**.



## and Ending Your Ricochet Session...

- 2 In the [Connected to Ricochet] window, select Disconnect. When the connection ends, you will hear a descending sequence of tones.

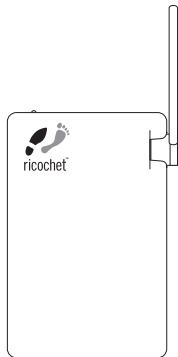
7

## Getting on the Internet

- 1 Make sure the modem is on and registered on the Ricochet network (blinking green light).
- 2 Double-click the [Dial Ricochet] icon.
- 3 Click the **Connect** button.



The yellow light will blink and you will hear several two-tone beeps (if your modem is not in silent mode).



Yellow light, blinking:  
Connected to Internet

- 4 Start your web browser.

8

## QuickStart

Welcome to Ricochet! You are about to experience true freedom for the first time. Ricochet sets you free from the office with mobile access to e-mail, the Internet and company networks from anywhere in our coverage areas—without being tied to a wall jack. This means you can work when, where, and how you want to with the information you need just a few clicks away.

Imagine responding to email from the back of a taxi or downloading a presentation sitting in a client's conference room. Or staying online while waiting at the doctor's office. Or doing business from a coffee shop. You get the picture.

We think you'll agree that Ricochet changes everything.

