



## Metricom GS Wireless Modem Getting Started Guide (BETA)

Serial Number: \_\_\_\_\_

Modem Name: \_\_\_\_\_

- Setting Up The Modem Hardware
- Installing The PC Card Software
- Modem Hardware Operation
- Connecting the Hardware
- Installing The Modem Software

## Product Information (con't)

**FCC Compliance** - This device does not comply with Part 15 of the FCC Rules. Operation is subject to the following two conditions: (1) This device may not cause harmful interference, and (2) this device must accept any interference received, including interference that may cause unwanted operation.

This equipment is being tested to comply with the limits for a Class B digital device, pursuant to Part 15 of the FCC Rules. These limits are designed to provide reasonable protection against harmful interference in a residential installation. This equipment generates, uses and can radiate radio frequency energy and, if not installed and used in accordance with the instructions, may cause harmful interference to radio communications. However, there is no guarantee that interference will not occur in a particular installation. If this equipment does cause harmful interference to radio or television reception, which can be determined by turning the equipment off and on, the user is encouraged to try to correct the interference by one or more of the following safety measures:

- Reorient or relocate the receiving antenna.
- Increase the separation between the equipment and receiver.
- Consult the dealer or an experienced radio modem technician for help.

It is recommended that the antenna of this device be placed at 11 cm (4.5") or more from its user and any nearby persons, during continuous and extended data transmission. The users of this device should ensure that the operation of this device is in compliance with these provisions.

### Ricochet Internet Settings

- Primary DNS: 168.253.48.19
- Secondary DNS: 198.6.1.1
- Dial String: 222
- POP Host: pop.ricochet.net
- SMTP Host: smtp.ricochet.net
- News/NNTP Host: news.ricochet.net

### Recommended Modem Settings

- RS-232 Serial Port Speed: 115200 baud
- PC Card High Speed Serial Port: 115200 baud
- Macintosh Serial Port: 230400 baud
- Flow Control: Hardware (CTS & RTS [DTR])
- USB Port: Not Supported at this time.

# START HERE

Welcome to Ricochet<sup>2</sup>!

Welcome to the Ricochet<sup>2</sup> Digital Wireless Service and congratulations on your participation in the Metricom GS Wireless Modem Beta Program. With the Ricochet modem, you can go out into the hustling, bustling world and bring e-mail, the Internet, and even your company's LAN along with you - without wires, without a phone jack.

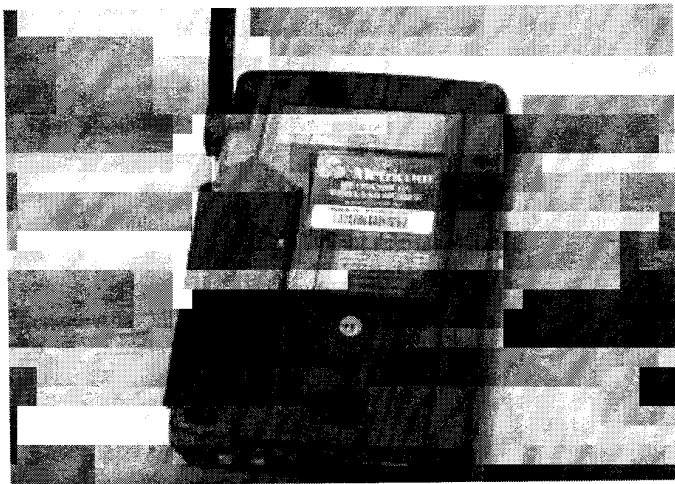
Now that you're a Beta user of the Ricochet<sup>2</sup> Service, you can send a file to your office computer from a meeting at a restaurant, connect to the Internet from your living room couch, check your e-mail and scan stock quotes from a bench in the park. The Ricochet Modem brings you fast, truly portable computing, for the first time!

- Wireless - no phone lines, no busy signals
- Portable - designed for easy mobility
- Fast - fastest wireless speed in the industry
- Compatible - works with both desktop and laptop computers.

#### Expected Connectivity Performance:

	RS-232	High-Speed PC Card Serial	Macintosh Serial
Win 95	80 Kbps	N/A	N/A
Win 98	80 Kbps	128 Kbps	N/A
Win NT	80 Kbps	N/A	N/A
Mac 8.0	N/A	N/A	128 Kbps

## Part One: Setting Up The Modem Hardware (Win & Mac)



### Installing and Replacing the Battery

#### IN:

Slide the battery into the empty space at the back of the modem so the metal tabs touch the metal contacts. Snap into place.

#### OUT:

With one hand, slide the ribbed tab to the right to disengage the battery. With the other hand, pivot the battery to the left & out of the modem.



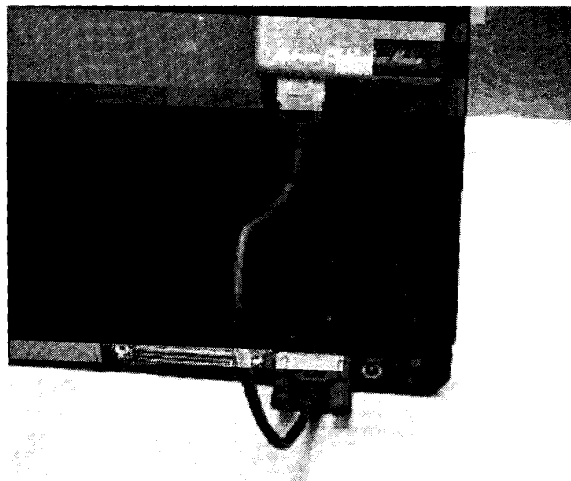
### Charging the Battery

1. Connect the AC adapter to the modem.
2. Plug the adapter into any household power outlet.

The battery will continue to charge, whether or not you're using the modem. When not in use, average time is two hours. During use, time for full charge is longer.

## Part Two: Connecting The Hardware To The Computer (Win & Mac)

# Laptop



### Connecting to Your Computer

1. Plug the modem-cable connector into the modem.
2. Plug the other end of the cable into an available serial port in the computer.

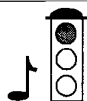
3. Turn the modem on and wait for the blinking green light.

#### NOTE:

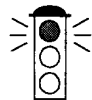
Connection port location may differ on your particular computer than what is represented in the photo above. Please refer to your computer

manufacturer's instructions for the correct location.

## Part Three: Modem Hardware Operation



**POWERED ON**  
single beep;  
solid red



**FOUND NETWORK**  
no tone;  
blinking red

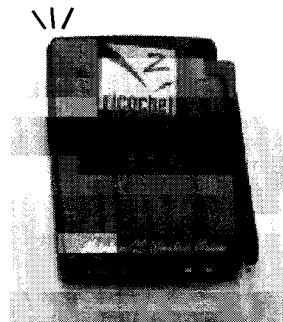


**REGISTERED ON NETWORK**  
two-tone beep;  
blinking green



**CONNECTED TO NETWORK**  
multiple-tone ring;  
blinking yellow

**Note:** If you are indoors, place the modem near a window to get the best network connection.



OFF



ON/Silent Mode



ON/Tone

**Note:** Press and hold the power switch to check network coverage in your area. Four beeps is ideal; one beep is poor.

### Registering on the Ricochet Network

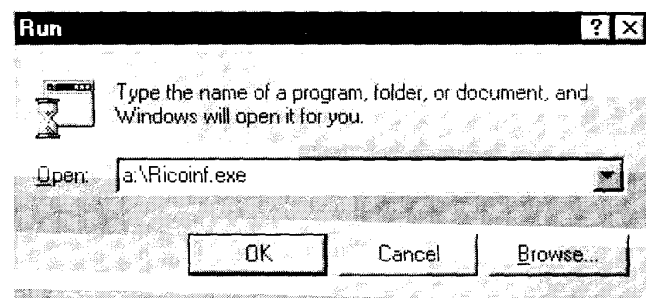
1. Turn on the modem.
2. Listen for a single beep and look for the modem's light to turn red, indicating that the modem is turned on.
3. Watch for the red light to blink, indicating that the modem has detected the network.
4. Listen for two low-to-high beeps, and watch for the modem's light to blink green, indicating that the modem has registered in the network.

#### NOTE:

If your modem is operating under silent mode, you will not hear the inductive tones. The modem light will display status for you.

# Win98

## Part Four: Installing The PC Card Software (Win 98 Only)

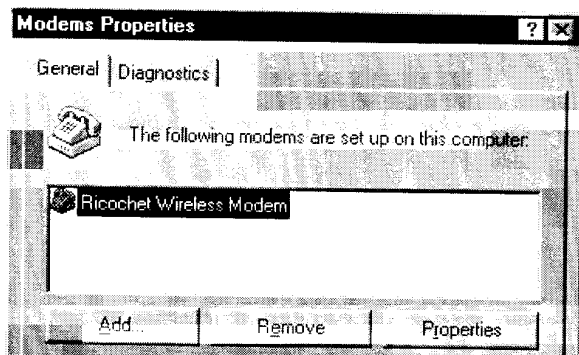


### Installing your PC Card Software, Windows 98

1. Quit all running applications.
2. Insert the **Ricochet Disk 1** into the floppy drive.
3. Click **Start**, then select **Run**.
4. Type **a:\Ricoinf.exe**, click **OK**, then follow the instructions on screen until you are finished.
5. After running the **Ricoinf.exe** file, plug in the PC Card and cable (as shown above) into an available slot.

## Part Five: Installing The Modem Software (Win & Mac)

# Win 98



### Adding Your Modem to the Control Panel

1. **Start > Settings > Control Panel.** Double-click **Modems**.
2. The "Modems Properties" window will appear. Click **Add**.

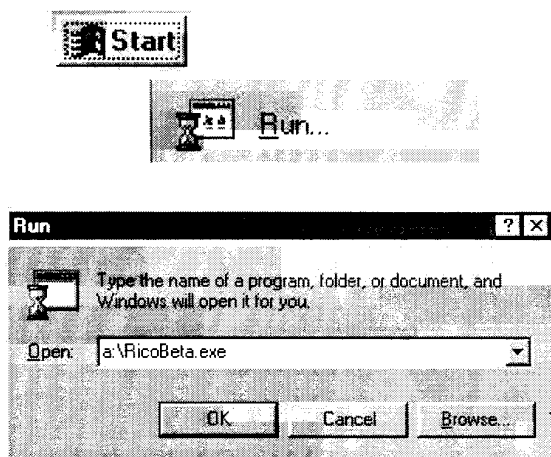
#### NOTE:

If your PC has PCMCIA slots, you may see a window asking you to select between **PCMCIA modem card** and **Other**. Select **Other**, then click **Next** to continue.

3. The "Install New Modem" window will appear. Check box for **I will select it from a list**. Click **Next**.
4. Under "Manufacturer" select **Metricom, Inc.** Under "Models" select **Metricom GS Wireless Modem**.
5. Make sure your modem is connected to your computer and turned on. Click **Next**.
6. In the "Select Com Port" window, select **Sealevel PC-SIO**. Click **Next**.
7. You have successfully set up your Ricochet modem. Click **Finish**.
8. The "Modems Properties" window will appear. Verify that **Metricom GS Wireless Modem** is selected. If not, click once on **Metricom GS Wireless Modem** to select it.
9. Click **OK** (or **Close**).

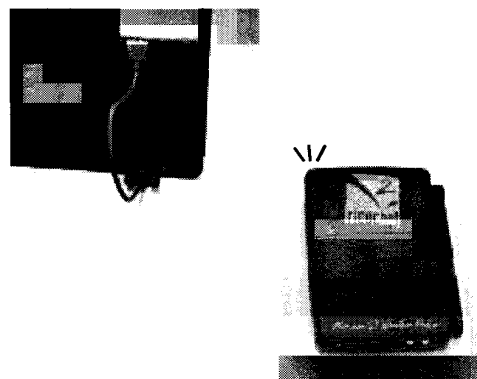


# Win 98



## Installing your Ricochet Connection software

1. Quit all running applications.
2. Insert the **Ricochet Disk 1** into the floppy drive. Click **Start**, then select **Run**.
3. Type **a:\RicoBeta.exe**, click **OK**, then follow the instructions on screen until finished.
4. You are now ready to make a Ricochet connection.

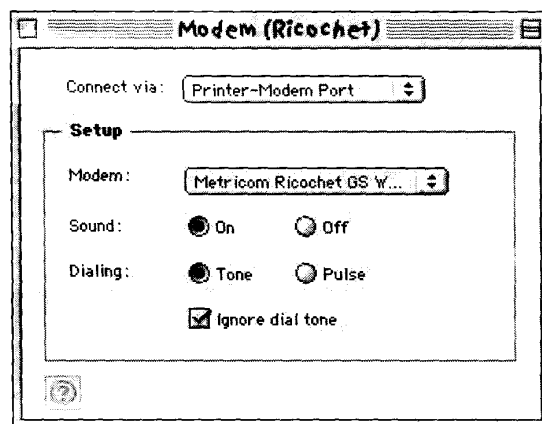


Ricochet Beta.ln

## Making a Ricochet Connection to the Internet

1. Make sure your modem is connected properly to your computer (pg. 5), and is registered on the network: the LED will be flashing green (pg 6).
2. Double-click the **Ricochet Beta** icon on your desktop.
3. Launch your Internet Browser.

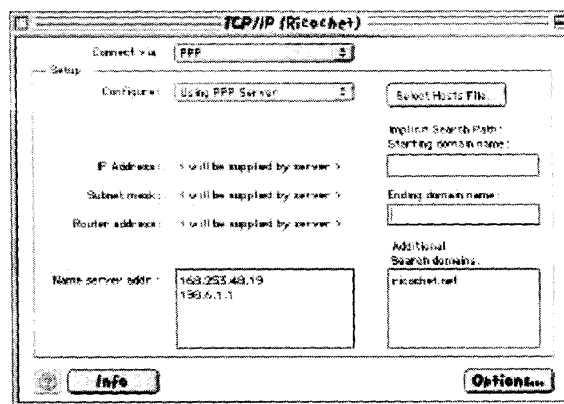
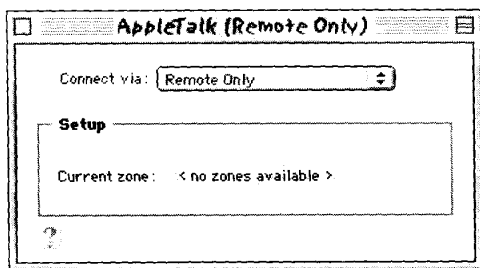
# Mac



## Installing your Configuration Software, Macintosh

1. Drag the ARA CCL file **Metricom Ricochet GS Wireless** to the System Folder.
2. Click **OK** to place the file in the Modem Scripts folder.
3. Select the **Modem Control Panel**. This displays the modem control panel allowing you to select the modem to use.
4. For "Connect Via:" select the the port that the Ricochet GS Modem is connected to. On your Powerbook, this will be the **Printer Modem Port**.
5. For "Modem:" select **Metricom Ricochet GS Wireless**. If **Metricom Ricochet GS Wireless** does not appear in the pop-up menu, copy the

# Mac



## Installing your Configuration Software, Macintosh (continued)

**Metricom Ricochet**  
GS Wireless CCL file  
location to the Modem  
Scripts folder. (The  
Modem Scripts folder  
is located in the Exten-

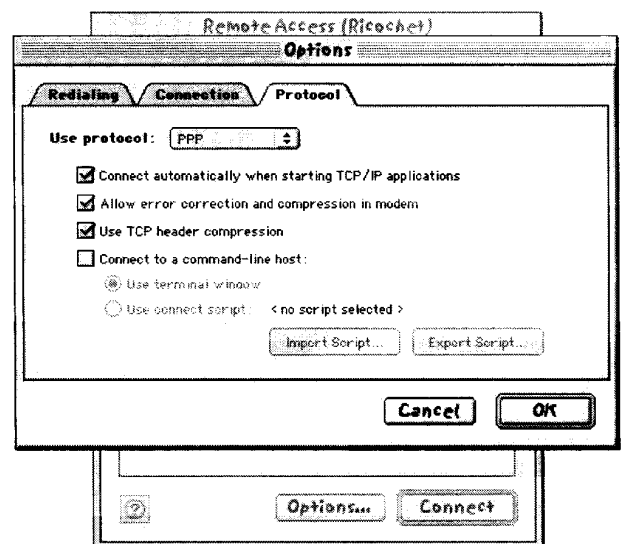
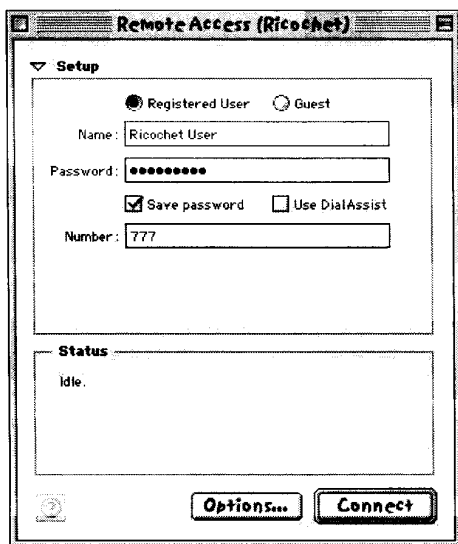
6. Open the **AppleTalk Control Panel**.
7. For "Connect via:" select **Remote Only**,

close the Control Panel  
to save your changes.

8. Open the **TCP/IP Control Panel**.
9. For "Connect Via:" select **PPP**. For "Con-

figure" select **Using PPP Server**. For  
"Name Server Addr"  
add **168.253.48.19**,  
**198.6.1.1**. For "Addi-  
tional Search Domains,"  
type **ricochet.net**.

# Mac



## Configuring Apple Remote Access (Macintosh)

1. Open the **Remote Access Control Panel**.
2. Click the arrow next to the word "Setup" so that **Name**, **Password**, and **Number** are displayed.
3. In the "Name" field, type **Ricochet**.
4. In the "Password" field, type **ricochet**.
5. In the "Number" field, type **222**.
6. Click **Options**.
7. Click the **Protocol** tab.
8. For "Use Protocol," select **PPP**.
9. Click **OK** to accept the changes.